

THE SMALL QUEEN NEWSLETTER OF THE CANADIAN
SMALL QUEEN STUDY GROUP (BNAPEX)

VOLUME 6. No. 2

NOVEMBER 1981



1. BNAPEX 81 - OTTAWA:

A small informal seminar of the study group was held at the Skyline Hotel on Saturday, September 26th at 9:00 a.m. A most interesting discussion, led by Jack Weatherwax, on the 8¢ Small Queen it's shades, re-entries, was enjoyed by all. Anyone interested in the study of the 8¢ S.Q. can write the editor or Jack, but would appreciate the inclusion of questions on articles in this newsletter.

2. NEW MEMBERS

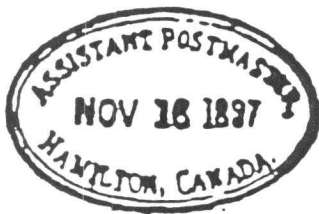
We welcome the following new members into this study group - JOHN KESSEL, LEW LUDLOW, DAVID MCKAIN, W.D. STAMPS. A membership roster will be included in the next newsletter.

3. Sorry to report the passing of two of our members. JACK A. GILMORE, RUSSELL ALLISON. Both contributed much to this study group and will certainly be missed.

4. NEWSLETTER SUMMARY: Part I - 2nd Edition -

-Notes on oval cancels of the Small Queen ERA - George T. Olson Jr.

NOTES



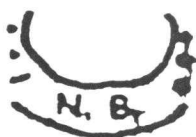
Since the first edition of this article, a second "official oval" used as a cancel has been reported by Dr. Stulberg. Two strikes of this oval appear on a cover - one properly used on the left hand side of the envelope to identify the sending department but the other cancelling the stamp and tying it to the upper right hand corner. Apparently the letter was in regard to a private matter rather than post office business or it would have passed FREE. The strikes are in magenta.

Another new development is the solution to the puzzle of OX-1 (the TORONTO ENQUIRY OFFICE cancel). This has been found tying postage to bulk mailing slips, paying the 1¢/# rate for bulk mailed circulars.

UNIDENTIFIED OVALS



could be OM-16,
SUMMERSIDE BANK -
not enough to tell -
strike is blue



possibly a small-
letter variety of a
ST. JOHN oval



does not appear
to be TORONTO



unidentified RPO



unidentified RPO



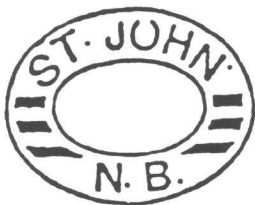
EEDON ??



SRBORO ?



OM-1



(PA)OM-5

OM-2



OM-6

(PA)OM-3



OM-7

OM-4



OM-8



OM-9



(PA)OM-10



OM-11



OM-12



OM-13



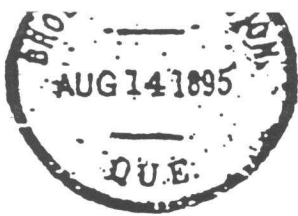
OM-14



OM-15

<u>DESIGN</u>	<u>TOWN</u>	JARRETT		<u>DATES</u>	<u>SOURCE</u>	<u>RF</u>
		<u>TYPE</u>	<u>COLOR</u>			
OM-1	FREDERICTON/ N.B.	193	black	J,6	100
OM-2	FREDERICTON/ N.B.	358a	black	J	200
OM-3	ST. JOHN/ N.B.	un1 193v	black	(P) DE 2'91 JA 14'92	PA	200
OM-4	ST. JOHN/ N.B.	1g 193	black	NO 20'97	1,6	100
OM-5	ST. JOHN/ N.B.	193	black	(P) JY 14'92 AU 9'92	PA,1 2,4	25
OM-5A	ST. JOHN/ N.B.	193	blue	9	175
OM-6	ST. JOHN/ N.B.	un1 193v	black	6,9	50
OM-7	HALIFAX/ N.S.	355	black	(J)1872/1880	J,2,6,8	125
OM-8	HALIFAX/ N.S.	un1 357	magenta	1891-1893	1,2	50
OM-9	HALIFAX/ N.S.	un1 354	black	6	150
OM-10	PARCEL POST/ HALIFAX	354	black	(P) JA 16'95 FE 12'95	PA,J	150
OM-11	REGISTERED/ HALIFAX	1465	black	(J)1890	J	200
OM-12	LUNENBURG/.....	un1 193	black	6	150
OM-13	WOLFVILLE./ NOVA SCOTIA.	352	black	(J)1868-72	J	150
OM-14	CHARLOTTETOWN/ CANADA	358a	black	6	100
OM-15	REGISTERED/ CHARLOTTETOWN*P.E.I.	1463	black	OC 5'85	6	150
OM-16	SUMMERSIDE BANK/ SUMMERSIDE	352a	blue	(J) JUN. 18, 1873	J	200

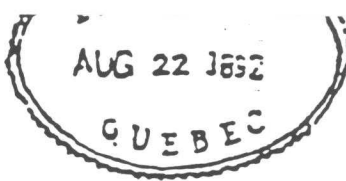
SEE MARITIME PROVINCES NOTES IN APPENDIX.



OQ-1



OQ-2



OQ-3



OQ-4



(PA)OQ-5



(PA)OQ-6



(PA)OQ-7



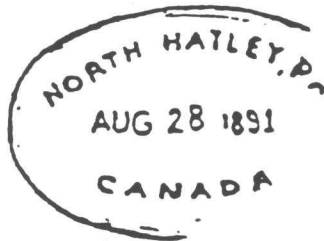
OQ-8



OQ-9



OQ-12/12A



OQ-13/13A



OQ-14



OQ-16/16A

DESIGN	TOWN	JARRETT		DATES	SOURCE	RF
		TYPE	COLOR			
OQ-1	BROUGHTON STATION,/ QUE.	un1	magenta	AU 14'95	7	150
OQ-2	COATICOOKE/ PR..?..	un1	JU 6'77	6	150
OQ-3	FITCH BAY/ QUE (D&S 326A)		magenta	JU 15'92 AU 22'92	DS,1	150
OQ-4	GLEN SUTTON,PQ/.?.	un1	black	OC 29'89	1	150
OQ-5	MONTREAL/ QUE	un1 357	black (P)	AP 27(80) AP 29(80)	PA,1	100
OQ-6	MONTREAL/ QUE	357	purple/ magenta	(P)FE 28(93)	PA,1	5
OQ-7	MONTREAL/ QUE	357	purple/ magenta	(P)MR 2_(94)	PA,1	5
OQ-8	MONTREAL/ QUE	359	purple/ magenta	1,2,6	15
OQ-9	MONTREAL/ QUE	un1	black	1	150
OQ-10	MONTREAL/ QUE	193	black	J	200
OQ-11	MONTREAL/ QUE	359a	?	J	200
OQ-12	ST.CATHERINE STREET CENTRE/MONTREAL	un1 358	magenta	1,2	25
OQ-12A	ST.CATHERINE STREET CENTRE/MONTREAL	un1 358	red	JA 13(97)	1	125
OQ-13	NORTH HATLEY,P.Q./ CANADA	un1	purple	___ 9,1891	6	150
OQ-13A	NORTH HATLEY,P.Q./ CANADA	un1	green	AU __,189_	6	150
OQ-14	QUEBEC/ QUE	359	magenta	1	75
OQ-15	QUEBEC/ QUE	359a	?	J	200
OQ-16	ST.HYACINTHE/ QUE	un1 193	black	1,2,6	100
OQ-16A	ST.HYACINTHE/ QUE	un1 193	purple	6	150

SEE QUEBEC NOTES IN APPENDIX.



00-1

QUEB
7 1889

00-2



00-3



00-4



00-5



00-6



00-7



00-8



00-9



00-11

00-10

00-12



00-13



00-14



00-15



00-16



(PA) 00-17



00-18



(PA) 00-19

00-20



00-22

ONTARIO PROVINCE

<u>DESIGN</u>	<u>TOWN</u>	<u>JARRETT</u> <u>TYPE</u>	<u>COLOR</u>	<u>DATES</u>	<u>SOURCE</u>	<u>RF</u>
00-1	ACTON/ ONT.	193	black	2	150
00-2	ARDEN/ _____	un1	black	___ 7'89	6	150
00-3	BELLEVILLE/ ONT.	193	black	6	150
00-4	REGISTERED/ BELLEVILLE ONT.CANADA	un1 1463	black	AU 7'86	H	150
00-5	BRAMPTON/ ONT.	193	black	4	150
00-6	BRANTFORD/ ONT.	193	magenta	6,7	100
00-7	REGISTERED/ BRANTFORD.ONT.CANADA	un1 1463	black	MY 26'85	6	150
00-8	COBOURG/ ONT.	193	black	6	150
00-9	REGISTERED/ COBOURG ONT.CANADA	un1 1463	black	JY 25'18 (sic)	H	200
00-10	REGISTERED/ CORNWALL ONT.	un1 1463	black	OC 28'85	6	150
00-11	HAMILTON/ CANADA	un1 359	black	6	150
00-12	HAMILTON/ CANADA	un1 359	black	6	150
00-13	HAMILTON/ CANADA	un1 359v	black	6	150
00-14	REGISTERED/ HAMILTON	1463a	black	1874-75	J,H,5	100
00-15	REGISTERED/ HAMILTON	un1 1463a	black	(H)FE '77	H,1,5	125
00-16	REGISTERED/ HAMILTON ONT.	1463	black	1879-81	J,H,5	75
00-17	REGISTERED/ HAMILTON CANADA	un1 1463	black	(P)MY 6'82	PA,H 1,5	40
00-18	REGISTERED/ KINGSTON CANADA	un1 1463	black	(H)AP 7'84	H	150
00-19	REGISTERED/ LONDON-CANADA	un1 1463	black	(P)MR 2'82	PA,H	150
00-20	OSHAWA/ ONT.	358	black	J	200
00-21	OSHAWA/ ONT.	193	black	1	150
00-22	REGISTERED/ PETERBOROUGH ONT.	un1 1463	black	FE 25'86	6	150

SEE ONTARIO PROVINCE NOTES IN APPENDIX.



(CPA) OT-22



(CPA) OT-23



(CPA) OT-24



(CPA) OT-25



(CPA) OT-26



OT-31



OT-32



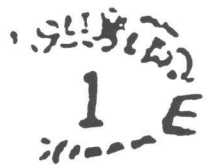
OT-33



OT-34



OT-35



OT-35A



(CPA) OT-44



(CPA) OT-45



(CPA) OT-46



(CPA) OT-41



(CPA) OT-42



(CPA) OT-43

TORONTO

<u>DESIGN</u>	<u>LEGEND</u>	<u>JARRETT</u>		<u>DATES</u>	<u>SOURCE</u>	<u>RF</u>
		<u>TYPE</u>	<u>COLOR</u>			
OT-21	TORONTO/ ONT. (1)	193	black		extrap. ?	
OT-22	TORONTO/ ONT. (2)	193	black		PA	200
OT-23	TORONTO/ ONT. (3)	193	black	NO 12'81	PA	200
OT-24	TORONTO/ ONT. (4)	193	black	(P) DE 16'81	PA	200
OT-25	TORONTO/ ONT. (5)	193	black		PA	200
OT-26	TORONTO/ ONT. (6)	193	black		PA	200
OT-31	TORONTO/ ONT. (1) (lg. serified 'l')	193c	black	AU 1_'92	1,J	25
OT-32	TORONTO/ ONT. (1) (weeping 'l')	193c	black	OC 23'93	1,2,5	5
OT-33	TORONTO/ ONT. (1) (skinny 'l')	193c	black	1	125
OT-34	TORONTO/ ONT. (1) (fat 'l')	193	black	1	125
OT-35	TORONTO/ ONT. (1) (degenerate 'l')	193	black	1,2,6	25
OT-41	TORONTO (1)	193a	black		PA	200
OT-42	TORONTO (2)	193a	black		PA	200
OT-43	TORONTO (3)	193a	black		PA,6	175
OT-44	TORONTO (4)	193a	black	(J)MAY 1883	PA	200
OT-45	TORONTO (5)	193a	black		PA	200
OT-46	TORONTO (6)	193a	black		PA	200

SEE TORONTO NOTES IN APPENDIX.

OT-50



OT-53



OT-57



OT-63

OT-51



OT-54



(PA) OT-59

OT-64

OT-52



OT-55



OT-61



OT-65

OT-52A



OT-56



OT-62

OT-66



(PA) OT-71/82



OT-92



OT-93



OT-95



OT-97

TORONTO (2)

<u>DESIGN</u>	<u>LEGEND</u>	<u>JARRETT</u>		<u>DATES</u>	<u>SOURCE</u>	<u>RF</u>
		<u>TYPE</u>	<u>COLOR</u>			
OT-50	TORONTO/ ONT (B)	358	black		6	150
OT-51	TORONTO/ ONT (C)	358	black			75
OT-52	TORONTO/ ONT (D)	358	black			125
OT-52A	TORONTO/ ONT (Q)	358	black	(J)OC 1888	1,2,6	150
OT-53	TORONTO/ ONT (S)	358	black			125
OT-54	TORONTO/ ONT (W)	358	black			30
OT-55	TORONTO/ ONT (4)	unl 358	black	6	150
OT-56	TORONTO/ ONT (5)	unl 358	black	6	150
OT-57	REGISTERED/ TORONTO-CANADA	unl 1463	black	(H)SP 17'85	H	150
OT-59	REGISTERED/ TORONTO-P.O.	unl 1463	black	(P)JA 14'87	PA,7	200
OT-61	TORONTO/ ONT (1)	sm.193	black	1,2	25
OT-62	TORONTO/ ONT (2)	sm.193	black	<i>Bednar extrap.</i>	<i>200 75</i>
OT-63	TORONTO/ ONT (3)	sm.193	black	1,2	75
OT-64	TORONTO/ ONT (4)	sm.193	black	<i>extrap</i>	<i>200 150</i>
OT-65	TORONTO/ ONT (5)	sm.193	black	2,6	125
OT-66	TORONTO/ ONT (6)	sm.193	black	extrap.	200
OT-71/82	TORONTO, CAN./ (#1-12)	193b	black	(P)JY 19'92	PA	200
OT-92	TORONTO/ ONT (B)	unl 193v	black	1	150
OT-93	TORONTO/ ONT. (B)	unl 193v	black	1	100
OT-95	TORONTO/ ONT (C)	unl 193v	black	6,8	150
OT-97	TORONTO/ CNT.	193v	black	1,6	100
OT-100	BLEEKER STREET/ TORONTO	unl 358a	?	c.1892-94	6	150
OT-101	GERRARD STREET/ TORONTO	unl 358a	?	c.1892-94	6	150

SEE TORONTO NOTES IN APPENDIX.