



EDITORIAL

1. Several members have mentioned that they would like to see articles on the ½c, 6c, 8c, 10c Small Queens. Any member having any such articles on the above, or questions, or new findings, kindly send them to the editor and they will be featured in the next newsletter.

Due to lack of articles I have not been able to issue this newsletter on a regular basis. I hope that this will change in the near future!

2. NEWSLETTER SUMMARY

Notes on Oval Cancels of the Small Queen Era - George T. Olson Jr.

3. THE TREASURER'S REPORT FOR 1979

Balance 12/31/78	83.10
Income	
Dues Paid in 1979	100.11
Interest on Savings Account - 1979	<u>3.91</u>
	<u>187.12</u>
Expenses - 1979	
Stationery, Postage - 4 Newsletters	25.37
Balance 31/1/80	<u>161.75</u>



- 1) MARITIME PROVINCES
- 2) QUEBEC PROVINCE
- 3) ONTARIO PROVINCE
- 4) TORONTO
- 5) WESTERN PROVINCES/DEAD LETTER OFFICES/
MONEY ORDER OFFICES
- 6) RPO's

Illustrations are photocopies from the P&A Proof Book where available - those numbers preceded by a (PA) - or tracings. Although the quality of the tracings may bear some criticism, they are really faithful reproductions of actual cancels. Every temptation to draw them as they "should have been" was resisted with the thought that particular characteristics might eventually reveal multiple devices. Where possible, a cover or the proof book strike has been used to establish an anchor point for dates of use of the cancel.

VALUATIONS AND KEY:

The rarity factors range from RF5 for the most common to RF200 for those known only in the proof book or reported by Jarrett. Tentatively, 100 points can be added to the RF for fine strikes on cover. RF's on the RPO cancels are from Lewis Ludlow's revised edition of Shaw's Handbook of Canadian Transportation Postmarks. All of the valuations should be approached with more than a little skepticism - one person, or even half a dozen people, cannot establish an accurate scale. Since the ovals are not extensively researched or collected, items of high rarity factor may well be found, while some with RF 25-50 may prove most elusive.

Dates reported are from the proof book if preceded by a "P". These are the "sandwiching" dates for those ovals without daters. If the date is preceded by a "J" it means the cancel was reported for that date by Jarrett, but no dated examples have been seen.

Reporters are designated as follows:

- J Fred Jarrett
- H Harrison, Canada's Registry System: 1827-1911
- DS Day and Smythies, Canadian Fancy Cancels of the 19th Century
- PA Pritchard and Andrews Proof Book
 - 1 George Olson
 - 2 Harold Wilding
 - 3 Jim Pike
 - 4 Jack Weatherwax
 - 5 Lewis Ludlow
 - 6 Dr. F.G. Stulberg
 - 7 John Norbeck

Reporters with numbers in brackets are from the Handbook of Canadian Transportation Postmarks and do not relate to this list.

ACKNOWLEDGEMENTS:

My thanks to those listed as reporters, who have contributed to this article and the many others who have confirmed cancels or added to the inventory. A special thanks are due the following who have been kind enough to review this draft:

- 1) Harold Wilding - collector and long-time student of the Small Queens, who has contributed not only to this article but to my understanding and enjoyment of the Small Queens, in general, through our continuing correspondence.
- 2) Lewis Ludlow - one of the deans of Canadian cancel studies, who has been most helpful, particularly with the RPO cancels and information from the P&A Proof Book.
- 3) C.R. (Ron) McGuire - head of research of the Canadian National Postal Museum and, currently, acting curator.
- 4) Dr. Fred G. Stulberg - President of the Royal Philatelic Society of Canada.

POSTADD:

Many oval markings are not covered, particularly franks and government offices. These were never intended as cancels, although they sometimes fall on the stamps. In the course of researching this article, much data on the departmental ovals has surfaced. Perhaps this may form a basis for a future monograph. A single exception that has been found is so unusual in its application that it is herewith listed and illustrated:

OX-1 ENQUIRY OFFICE/POST OFFICE TORONTO magenta (1890's) 1,2 125

ENQUIRY

FEB 3

POST OFFICE

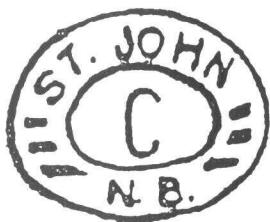
There are two confirmed copies of this marking used as the only cancel on single, off cover, 3¢ SQ's and another has been reported. Why this office cancelled its own stamps is unknown.

MARITIME PROVINCES

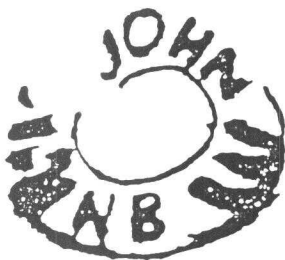
<u>DESIGN</u>	<u>TOWN</u>	<u>JARRETT</u> <u>TYPE</u>	<u>COLOR</u>	<u>DATES</u>	<u>SOURCE</u>	<u>RF</u>
OM-1	FREDERICTON/ N.B.	193	black	J,6	125
OM-2	FREDERICTON/ N.B.	358a	black	J	200
OM-3	ST.JOHN/ N.B.	unl 193v	black	(P) DE 2'91 JA 14'92	PA	200
OM-4	ST.JOHN/ N.B.	1g 193	black	NO 20'97	1,6	100
OM-5	ST.JOHN/ N.B.	193	black	(P) JY 14'92 AU 9'92	PA,1, 2,4	30
OM-6	HALIFAX/ N.S.	355	black	(J)1872/1880	J,2,6	125
OM-7	HALIFAX/ N.S.	unl 357	magenta	c.1893	1,2	50
OM-8	HALIFAX/ N.S.	unl 354	black	6	150
OM-9	PARCEL POST/ HALIFAX	354	black	(P) JA 16'95 FE 12'95	PA,J	150
OM-10	REGISTERED/ HALIFAX	1475	black	(J)1890	J	200
OM-11	WOLFVILLE./ NOVA SCOTIA.	352	black	(J)1868-72	J	150
OM-12	CHARLOTTETOWN/ P.E.I.	358a	black	6	150
OM-13	REGISTERED/ CHARLOTTETOWN-P.E.I.	1463	black	6	150
OM-14	SUMMERSIDE BANK/ SUMMERSIDE	352a	blue	(J) JUN. 18, 1873	J	200

notes

- OM-3/5 ST. JOHN ovals have been reported with "ears"- two marks at the top and/or two at the bottom in the outside ring of the oval. The reason for these regular features is unknown.
- OM-5 Earliest: AP 10'93/ latest: ___ '95.
- OM-5 Pictured are 4 of 6 strikes in the proof book - all appear indistinguishable (weak top of "O", frame bump between "S" and "T")
- OM-7 Date from shade of 8¢
- OM-10 Harrison reports this as 1902 use - not seen by author on SQ's. Rarity factor is for cancel on SQ, later issues RF=25.



(PA)OM-3



OM-4



OM-6



OM-7



(PA)OM-9



OM-10



QUEBEC PROVINCE

<u>DESIGN</u>	<u>TOWN</u>	<u>JARRETT</u> <u>TYPE</u>	<u>COLOR</u>	<u>DATES</u>	<u>SOURCE</u>	<u>RF</u>
OQ-1	BROUGHTON STATION,/ QUE.	un1	magenta	AU 14'95	7	150
OQ-2	FITCH BAY/ QUE	(D&S 326A)	magenta	JU 15'92 AU 22'92	DS,1	150
OQ-3	GLEN SUTTON,PQ/..?..	un1	black	OC 29'89	1	150
OQ-4	MONTREAL/ QUE	un1 357	black	(P)AP 27(80) AP 29(80)	PA,1	100
OQ-5	MONTREAL/ QUE	357	purple/ magenta	(P)FE 28(93)	PA,1	5
OQ-6	MONTREAL/ QUE	357	purple/ magenta	(P)MR 2_(94)	PA,1	5
OQ-7	MONTREAL/ QUE	359	purple/ magenta	1,2	15
OQ-8	MONTREAL/ QUE	un1	black	1	150
OQ-9	MONTREAL/ QUE	193	black	J	200
OQ-10	MONTREAL/ QUE	359a	?	J	200
OQ-11	ST.CATHERINE STREET CENTRE/ MONTREAL	un1 358	magenta	1,2	25
OQ-11A	ST.CATHERINE STREET CENTRE/ MONTREAL	un1 358	red	JA 13(97)	1	125
OQ-12	QUEBEC/ QUE	359	magenta	1	75
OQ-13	QUEBEC/ QUE	359a	?	J	200
OQ-14	ST.HYACINTHE/ QUE	un1 193	black	1,2	100

notes

OQ-2 Province and decade are incorrect in D&S. Although this type was supposedly used in "several small towns," no others have been seen during the period.

OQ-4 Strike #1 measures 44x29½ mm and strike #2 measures 44½x28½ mm outside. The difference is not enough to clearly establish two devices.

OQ-5/6 These may be separable by ink color and/or numeral types—more data is required. Confirmed dates: SP 5'94 and JY 12'95.

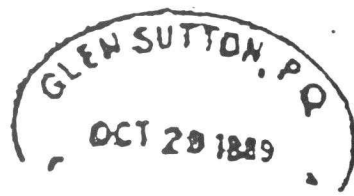
OQ-10/13 Doubtful—inner oval of OQ-7 and 12 probably didn't print.



OQ-1



OQ-2



OQ-3



(PA)OQ-4/4A



(PA)OQ-5



(PA)OQ-6



OQ-7



OQ-8



OQ-11/11A



OQ-12

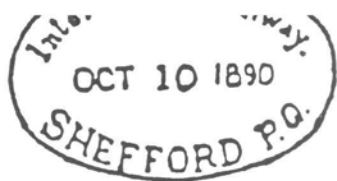


OQ-14

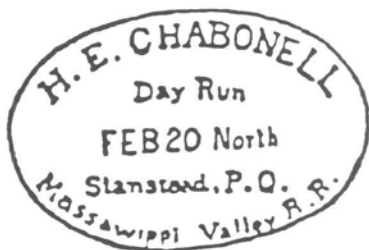
DESIGN	TOWN	JARRETT		DATES	SOURCE	RF
		TYPE	COLOR			
OO-1	ACTON/ ONT.	193	black	2	150
C	REGISTERED/ BELLEVILLE-ONT.CANADA	unl 1463	black	AU 7'86	H	150
OO-3	BRAMPTON/ ONT.	193	black	4	150
OO-4	BRANTFORD/ ONT.	193	magenta	6,7	125
OO-5	REGISTERED/ COBOURG ONT-CANADA	unl 1463	black	JY 25'18 (sic)	H	200
OO-5A	REGISTERED/ CORNWALL-ONT.	unl 1463	black	OC 28'85	6	150
OO-6	REGISTERED/ HAMILTON	1463a	black	1874-75	J,H,5	100
OO-7	REGISTERED/ HAMILTON	unl 1463a	black	(H) FE '77	H,1,5	125
OO-8	REGISTERED/ HAMILTON-ONT.	1463	black	1879-81	J,H,5	75
OO-9	REGISTERED/ HAMILTON-CANADA	unl 1463	black	(P)MY 6'82	PA,H, 1,5	50
OO-10	REGISTERED/ KINGSTON CANADA	unl 1463	black	(H)AP 7'84	H	150
OO-11	REGISTERED/ LONDON-CANADA	unl 1463	black	(P)MR 2'82	PA,H	150
OO-12	OSHAWA/ ONT.	358	black	J	200
OO-13	OSHAWA/ ONT.	193	black	1	150
OO-14	REGISTERED/ PETERBOROUGH-ONT.	unl 1463	black	6	150

notes

- OO-1 distinctive serifed "T"'s
- OO-5 free strike on piece
- OO-6 earliest use: MR __,'74/ latest use: NO __,'75
- OO-7 appears to be the same outer oval as OO-6 with date inserted (note flaw above "D") In use FE __,'77 and JY 16,'77. Latest: SP 16'78.
- OO-8 earliest use: MR 11,'79/ latest use: OC 15,'81
- OO-9 earliest use: JA 2,'83/ latest use: SP 25,'83
- OO-11 use on SP 2,'82
- OO-12 doubtful - probably type 193 (#OO-13)



R-76D



R-86



R-129



R-129v



MARITIME PROVINCES

- OM-3/6 ST. JOHN ovals have been reported with "ears" - two indentations at the top and/or at the bottom in the outside ring of the oval. The reason for these regular features is unknown.
- OM-5 Earliest: AP 10'93 / latest: JY 11'95. -
Pictured is 1 of 6 strikes in the Proof Book - all appear identical (weak top of "O", frame bump between "S" and "T").
- OM-6 More dates should establish if this is just OM-5 degenerated.
- OM-8 Earliest: MY 9'91 / latest: ___ ___'93
- OM-11 Harrison reports this as 1902 use - not seen by author on SQ's. Rarity factor is for cancel on SQ, later issues RF=25.

QUEBEC PROVINCE

- OQ-3 Province and decade are incorrect in D&S. Although this type was supposedly used in "several small towns," no others have been seen during the period.
- OQ-5 Strike #1 measures 44 x 29½ mm and strike #2 measures 44½ x 28½ mm outside. The difference is not enough to establish as two stamps.
- OQ-6/7 These may be separable by ink color and/or numeral types - more data is required. Confirmed dates: SP 5'94 and JY 12'95.
- OQ-7 Pictured is a reproduction of a very bad strike in the Proof Book made MR 2_ (1894).
- OQ-11 & OQ-15 Doubtful - inner oval of OQ-7 and 12 probably didn't print.

ONTARIO PROVINCE

- OO-1 Distinctive serifed letters.
- OO-5 Free strike on piece.
- OO-6 Earliest use: MR __, '74 / latest: NO __, '75.
- OO-7 Appears to be same outer oval as OO-6 with date inserted (note flaw above "D"). In use FE __, '77 and JY 16, '77. Latest: SP 16, '78
- OO-8 Earliest use: MR 11, '79 / latest: OC 15, '81.
- OO-9 Earliest use: JA 2, '83 / latest: SP 25, '83.
- OO-11 Use on SP 2, '82.
- OO-12 Doubtful - probably type 193 (#OO-13).

TORONTO

- OT-21 Not in Proof Book--appears to have been cut out.
- OT-21/26 Have not seen these ovals used--all similar have turned out to be OT-61 through 66 with smaller ovals and fine serifed number.
- As in the other numbered ovals (with the exceptions of OT-71/82), consensus of reporters is that they would have been used at the following offices:
- 1 TORONTO main office
 - 2 PARKDALE branch office
 - 3 SPADINA AVE. branch office
 - 4 YORKVILLE branch office
 - 5 RIVERSIDE branch office
 - 6 ?--possibly a backup device
- OT-33 This may be an early stage of OT-35.
- OT-34 More data required--this may be a smeared strike.
- OT-35/35A This stamp apparently started breaking up nearly immediately--strikes continue to c.1897, completely illegible.
- OT-43 Earliest: MR 26'94 / latest: DE 22'01
- OT-50/54 These were in use for many years and wore badly as time went on. Strikes may be found with 1)letter and one or both ovals but no "TORONTO",2)inner or outer oval missing, or 3)deformed letters ("D" can look like "B", "W" slanted and with broken leg appears as "N"). Value of any of these is less than a good strike.
- All of the lettered ovals appear to have been used at the following PO's:
- B Bathurst Street
 - C Carleton Street
 - D Dundas Street
 - Q Queen Street East
 - S Spadina Avenue
 - W Bleeker Street (corner of Wellesly)
- OT-54 Used extensively--dated covers MY 10'94 and JY 18'94.
- OT-71/82 These appear in the Proof Book, but have not been seen used. The numbers may refer to PO clerks.
- OT-97 On many strikes, this appears as a badly deformed circular cancell



00-1



00-2



00-3



00-4



00-5



00-6



00-7



00-8



(PA) 00-9



00-10



(PA) 00-11

WESTERN PROVINCES/ EXPRESS MARKINGS

- OW-6 Caution is recommended. This cancel has been extensively faked on British Columbia stamps and the fake may have been used on the SQ's also.
- OW-7 Reported date is two days before joining the Dominion - probably used after Confederation.
- OW-22/23 These may be the same canceller - comma and small 'o' are not confirmed. The grey-green shade is known with "NOV 26" date in center.

DEAD LETTER OFFICES/ MONEY ORDER OFFICES

The dead letter office cancels were often used on forwarding or return postage applied at these offices.



(CPA) OT-22



(CPA) OT-23



(CPA) OT-24



(CPA) OT-25



(CPA) OT-26



OT-31



OT-32



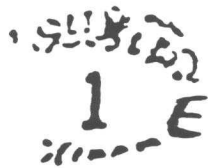
OT-33



OT-34



OT-35



OT-35A



(CPA) OT-44



(CPA) OT-45



(CPA) OT-46



(CPA) OT-41



(CPA) OT-42



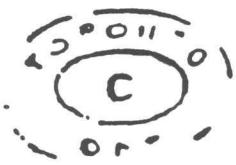
(CPA) OT-43

TORONTO

<u>DESIGN</u>	<u>LEGEND</u>	<u>JARRETT</u>		<u>DATES</u>	<u>SOURCE</u>	<u>RF</u>	
		<u>TYPE</u>	<u>COLOR</u>				
OT-21	TORONTO/ ONT.(1)	193	black	(P)	extrap.	?	
OT-22	TORONTO/ ONT.(2)	193	black		PA	200	
OT-23	TORONTO/ ONT.(3)	193	black		NO 12'81	PA	200
OT-24	TORONTO/ ONT.(4)	193	black		DE 16'81	PA	200
OT-25	TORONTO/ ONT.(5)	193	black			PA	200
OT-26	TORONTO/ ONT.(6)	193	black			PA	200
OT-31	TORONTO/ ONT.(1) (lg. serifed '1')	193c	black	AU 1_'92	1,J	25	
OT-32	TORONTO/ ONT.(1) (weeping '1')	193c	black	OC 23'93	1,2,5	5	
OT-33	TORONTO/ ONT.(1) (skinny '1')	193c	black	1	125	
OT-34	TORONTO/ ONT.(1) (fat '1')	193	black	1	125	
OT-35	TORONTO/ ONT.(1) (degenerate '1')	193	black	1	75	
OT-35A	(OT-35 badly degenerated)	193	black	1	25	
OT-41	TORONTO (1)	193a	black	(J)MAY 1883	PA	200	
OT-42	TORONTO (2)	193a	black		PA	200	
OT-43	TORONTO (3)	193a	black		PA	200	
OT-44	TORONTO (4)	193a	black		PA	200	
OT-45	TORONTO (5)	193a	black		PA	200	
OT-46	TORONTO (6)	193a	black		PA	200	

notes

- OT-21 does not appear in Proof Book -- apparently removed
- OT-21/6 have not seen these ovals - all similar have turned out to be OT-61/6 with smaller ovals and fine serifed numerals
- OT-34 more data required: this may be a smeared strike
- OT-35/A this hammer apparently started breaking up nearly immediately - strikes continue to c. 1897, completely demolished



OT-51



OT-52



OT-53



OT-54



OT-57



(PA)OT-59



OT-61



OT-63



OT-65



(PA)OT-71/82



OT-92



OT-93



OT-97

TORONTO (2)

<u>DESIGN</u>	<u>LEGEND</u>	<u>JARRETT</u>		<u>DATES</u>	<u>SOURCE</u>	<u>RF</u>
		<u>TYPE</u>	<u>COLOR</u>			
OT-51	TORONTO/ ONT (C)	358	black	} (J)OC 1888	1,2,6	75
OT-52	TORONTO/ ONT (D)	358	black			
OT-53	TORONTO/ ONT (S)	358	black			
OT-54	TORONTO/ ONT (W)	358	black			
OT-57	REGISTERED/ TORONTO-CANADA	unl 1463	black	(H)SP 17'85	H	150
OT-59	REGISTERED/ TORONTO-P.O.	unl 1463	black	(P)JA 14'87	PA,7	200
OT-61	TORONTO/ ONT (1)	sm.193	black	1,2	25
OT-62	TORONTO/ ONT (2)	sm.193	black	extrap.	200
OT-63	TORONTO/ ONT (3)	sm.193	black	1,2	75
OT-64	TORONTO/ ONT (4)	sm.193	black	6	150
OT-65	TORONTO/ ONT (5)	sm.193	black	2,6	125
OT-66	TORONTO/ ONT (6)	sm.193	black	extrap.	200
OT-71/82	TORONTO, CAN./ (#1-12)	193b	black	(P)JY 19'92	PA	200
OT-92	TORONTO/ ONT (B)	unl 193v	black	1	150
OT-93	TORONTO/ ONT. (B)	unl 193v	black	1	100
OT-95	TORONTO/ ONT (C)	unl 193v	black	6	150
OT-97	TORONTO/ ONT.	193v	black	1,6	125
OT-100	BLEEKER STREET/ TORONTO	unl 358a	?	c.1892-94	6	150
OT-101	GERRARD STREET/ TORONTO	unl 358a	?	c.1892-94	6	150

notes

- OT-51/4 These were in use for many years and, as can be seen from the tracings, degenerated as time went on. These can be found with no clear trace of "TORONTO/ ONT" or the outer oval.
- OT-51 Probably used at Carleton Street Branch.
- OT-52 Probably used at Dundas Street Branch--"D" can look like a "B"
- OT-53 Probably used at Spadina Avenue Branch
- OT-54 Used at Bleeker Street Branch--"W" can look like an "N"
Dated covers on MY 10'94 and JY 18'94,



OW-1



OW-2



OW-3



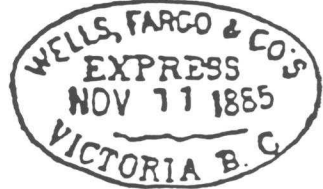
OW-11



OW-12



OW-13



OW-14



(PA)OD-1



(PA)OD-2



(PA)OD-3



(PA)OE-1



(PA)OE-2



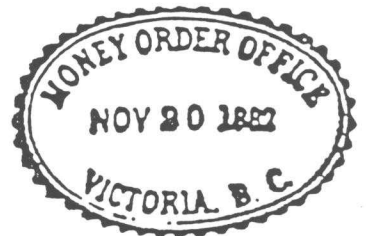
(PA)OE-3



(PA)OE-4



(PA)OE-5



(PA)OE-6

WESTERN PROVINCES/ DEAD LETTER OFFICES/ MONEY ORDER OFFICES

<u>DESIGN</u>	<u>TOWN/ OFFICE</u>	<u>JARRETT</u>		<u>DATES</u>	<u>SOURCE</u>	<u>RF</u>
		<u>TYPE</u>	<u>COLOR</u>			
OW-1	VICTORIA/ B.C.	348	blue	(J)JY 18'71	J	200
OW-2	VICTORIA/ B.C.	193	black	1,2,3	50
OW-3	REGISTERED/ WINNIPEG CANADA	unl 1463	black	(H)DE 8'85	H	150
OW-11	WELLS FARGO & CO/ VICTORIA V.I.	403	black	J	200
OW-12	WELLS FARGO & CO/ VICTORIA	404	black, red	J	150
OW-13	WELLS,FARGO & CO/ VICTORIA	405	gray-green	(J)1877/85	J,5	150
OW-14	WELLS,FARGO & CO'S/ VICTORIA B.C.	406	violet	(J)NO 11'85	J	150
OD-1	DEAD LETTER OFFICE/ CANADA	unl	(P)AU 5'81	PA	200
OD-2	DEAD LETTER BRANCH/ CANADA.	unl	purple	(P)c.MR 17'94	PA,1	150
OD-3	DEAD LETTER BRANCH/ CANADA.	unl	(P)SP 10'94	PA	200
OE-1	MONEY ORDER OFFICE/ P.O. DEPT CANADA	unl	black	(P)MR 31'77	PA	200
OE-2	MONEY ORDER OFFICE/ ST CATHARINES ONT	unl	black	(P)NO 20'77	PA	200
OE-3	MONEY ORDER OFFICE/ LONDON, ONT.	unl	black	(P)MY 14'78	PA	200
OE-4	POST OFFICE DEPT MONEY ORDER BRANCH/ OTTAWA CANADA	unl	black	(P)JU 2'78	PA	200
OE-5	SUPT.M.O.OFFICE/ CHARLOTTETOWN·P.E.I.	unl	black	(P)JY 5'78	PA	200
OE-6	MONEY ORDER OFFICE/ VICTORIA, B.C.	unl	?	(P)NO 20'82	PA	200

notes

OW-1 reported date is two days before joining the Dominion—probably used after Confederation

OW-12/13 These may be the same canceller—comma and small 'o' are not confirmed. The gray-green shade is known with "NOV 26"

M-135A
(1½X actual size)

MAY
16
1883
CAUSAPYCAL

R-76C

International Railway.
OCT 10 1890
SHEFFORD P.Q.

R-76D

H. E. CHABONELL
Day Run
FEB 20 North
Stanston, P. O.
Missawippi Valley R. R.

R-86

P. E. I. RAILWAY.
AUG
18
1875
O'LEARY ROAD.

R-110

REGISTERED
C. W. R. SARNIA BR.

R-129

REGISTERED
C. W. R. SARNIA BR.

R-129v

SHAW/ LUDLOW NUMBER	DESIGNATION	COLOR	DATES	SOURCE	S/L RF
M-1	ALBERT & SALISBURY	1870-1908	unconfirmed	170
M-135A	WINDSOR & ANNAPOLIS RAILWAY/ _____	black	FE 4'91	5	200
Q-110A	J.D.ANDERSON/ ABERCORN/ QUEBEC/ Montreal & Mansonville, Ag't	(63A)	200
Q-204F	QUEBEC DIVISION/ A.DORAIS	(135)	200
Q-276A	SHER. & AGNES C.P.Ry./ E.L.SMITH; M.C.	(10,34)	170
Q-289	(clerk's name)/ SHERBROOKE & STANS.	unconfirmed	200
Q-294	JOHN P. _____/ Bolton Center/ QUEBEC/ .. Sorell & Sutton Ry.	5	200
Q-367A	G.R.DEWAR/ MONTREAL/ CANADA/ RAILWAY MAIL CLERK/ Tor. & Mont.	(32)	200
W-160P	VAN. & VIC.	unconfirmed	200
R-29E	CAN.PAC.RWY.M.C./ R.Y.ELLIS/ BRITISH COLUMBIA	5,(10)	170
R-48B	GD.TRUNK RY./ ST. DOMINIQUE	(131)	200
R-51B	AGENTS OFFICE G.T.R./ THOUSAND ISLAND, Jct.	5	200
R-75	INTERCOLONIAL RAILWAY/ VALLEY	(8)	170
R-76	Intercolonial Railway/ CAUSAPSCAL,N.B.(STE.FLAVIE)	J,(88)	170
R-76A	International Railway/ A.H.EVANS,M.C.	(2,34)	170
R-76C	INTERCOLONIAL RAILWAY/ RIVIERE DU LOUP (CAUSAPSCAL)	blue	MY 16'83	(23,137), 1	170
R-76D	International Railway/ SHEFFORD, P.Q.	violet	MY 1890 OC 10'90	(34)	170
R-86	H.E.CHABONELL/ Stanstead,P.Q./ Massawippi Valley R.R.	carmine	(J)1885	J,(8)	140
R-86A	H.E.CHABONELL/ Mail Clerk/ Massawippi Valley R.R.	carmine	(J)1889	J	200
R-110	P.E.I.RAILWAY/ O'LEARY ROAD	green	AU 18'75	J,5	170
R-129	REGISTERED/ G.W.R.SARNIA BR.	black	(P) JY 13'78 JY 26'78	J, (87,63A)	150
R-129v	REGISTERED/ G.W.R.SARNIA BR.	black	(P)MR 5'81	5	170
				(122)	200