

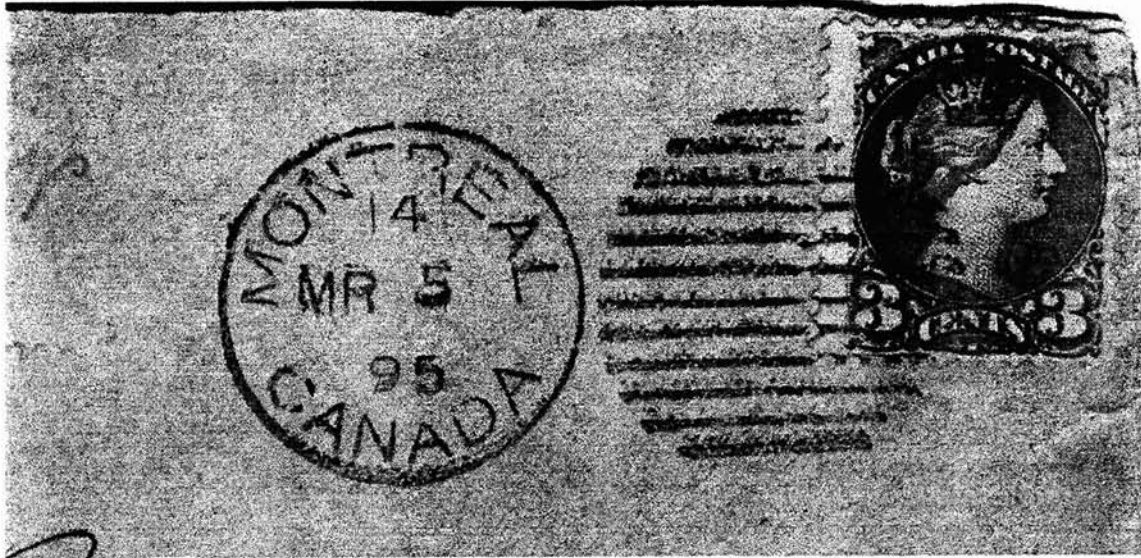
Confederation

The Newsletter of the Large and Small Queens Study Group

Number 10

January, 1999

Small Crown "Overprint" - What Is It?



This cover segment shows a small crown centered high on the stamp. Speculation is that it might be:

- An official precancel
- A private overprint
- A Post Office addition

The imprint is not reflected in any of the literature I have seen, although some who have seen it report that they have seen it before. My guess is that it is a private mark, applied before mailing. The cover went through the mail, as evidenced by the cancellation and the receiving marks on the back.

If anyone can shed more light on this, please contact the editor or Ron Ribler directly

Business Report

Our treasury contained \$83.22 on 1/1/98. During the year, we received \$245 in dues, and a BNAPS stipend of \$165. Postage expenses for the year were \$160.17, leaving a balance as of 1/1/99 of \$333.05

How To Reach Us

Chairman:
Ron Ribler, PO Box 22911, Fort Lauderdale, FL 33335,
fax (954)760-7794, phone (954)760-7795
e-mail at laudron@aol.com
Editor:
Roy Sass, PO Box 31054, Walnut Creek, CA 94598,
e-mail roywcca@ccnet.com

Editor's Column

Roy Sass

We have some interesting items in this edition of the newsletter. In the previous newsletter, I mentioned I would like to see a copy of the 12 1/2c LQ on a cover to Newfoundland. Charles J. G. Verge sent a photocopy of a cover dated SP 14, 1868, from Douglastown, New Brunswick, to St. John's, Newfoundland

Jack Davis writes in with a question on a cancel from Ottawa in 1895. Can anyone help us identify this cancel?

Also, in the last newsletter, we had a question about ship sailings in the Small Queen Era. T. R. Morgan refers us to J.C. Arnell's book *Atlantic Mails*. Mr. Morgan also copied the list of sailings during 1872-1873, which is reproduced herein.

Ben Cohen is interested in earliest dated cancels on the Large Queens. Between his collection and mine, we have a few dates for a few of the values and shades. I am sure that early (and earlier) dates can be found and I request your help in filling in the blanks.

That leaves just one further item. As we have turned a new year, annual dues are due from most members. Since our only expense is postage, I believe we can continue at \$5 US, or \$8 Canadian (due to current exchange). I've enclosed a dues notice as applicable. Please note I am leaving spaces for questions and your FREE classified Want ads.

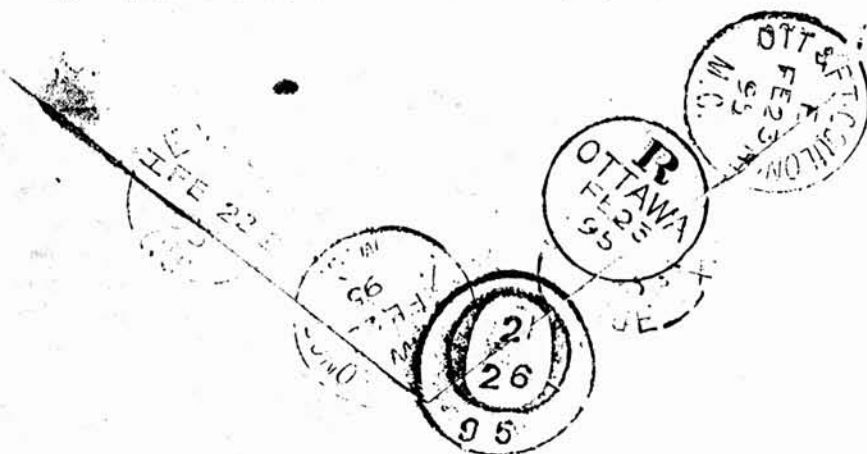
QUESTION

Illustrated here is the back of a registered cover from Ottawa to Floral Park, Queens County, NY, dated Feb 23 95. Jack Davis requests help in identifying the cancel at the top right of the envelope.

According to his two reference sources, *The Railways of Canada* (1871) and *the History of Canadian RPO's* by L. F. Gillam, Jack has been unable to find information on the cancel.

It reads OTT & FT. COULON, M.C., or perhaps OTT & FT. COULONE, or perhaps even OTT & PT. COULON.

Can anyone shed any light on this cancel?



M.C. means mail car---Chairman

Allan Line Sailings

By T. R. Morgan

In the last edition of *Confederation*, the question was raised about ship sailings in the Small Queen Era. This information is found in an excellent book *Atlantic Mails* by J.C. Arnell, in appendix two. The book was published in 1980 by the National Postal Museum in Ottawa.

The list on page 3 shows the sailings during a one year period between November 7, 1872, and December 2, 1873. Ships left Liverpool on a weekly schedule, destined for Portland in the winter and Quebec in the summer. The return trips also were on a weekly schedule.

For further information, I refer you to Mr. Arnell's book.

Allan Line Sailings

Winter 1872-1873	Liverpool	Portland	Portland	Liverpool
	Depart	Arrive	Depart	Arrive
Moravian	7-Nov	19-Nov	1-Dec	11-Dec
Polynesian	14-Nov	26-Nov	7-Dec	17-Dec
Scandinavian	21-Nov	3-Dec	14-Dec	29-Dec
Prussian	28-Nov	12-Dec	22-Dec	31-Dec
Peruvian	5-Dec	19-Dec	29-Dec	9-Jan
Sarmatian	13-Dec	26-Dec	5-Jan	14-Jan
Moravian	19-Dec	1-Jan	12-Jan	24-Jan
Manitoban	26-Dec	10-Jan		
Austrian			19-Jan	29-Jan
Scandinavian	2-Jan	15-Jan	26-Jan	6-Feb
Polynesian	9-Jan	25-Jan	2-Feb	11-Feb
Prussian	16-Jan	2-Feb	8-Feb	18-Feb
Hibernian	23-Jan	9-Feb		
North American			15-Feb	2-Mar
Moravian	30-Jan	12-Feb	23-Feb	6-Mar
Sarmatian	6-Feb	17-Feb	2-Mar	11-Mar
Scandinavian	13-Feb	26-Feb	8-Mar	19-Mar
Polynesian	20-Feb	4-Mar	16-Mar	26-Mar
Prussian	27-Feb	13-Mar	23-Mar	1-Apr
Peruvian	6-Mar	19-Mar	30-Mar	10-Apr
Moravian	13-Mar	25-Mar	5-Apr	18-Apr
Sarmatian	20-Mar	31-Mar	13-Apr	23-Apr
Scandinavian	27-Mar	8-Apr	19-Apr	30-Apr
Polynesian	3-Apr	14-Apr	26-Apr	6-May
Austrian	10-Apr	22-Apr	3-May	14-May
Summer 1873	Liverpool	Quebec	Quebec	Liverpool
	Depart	Arrive	Depart	Arrive
Prussian	17-Apr	28-Apr	10-May	21-May
Circassian	24-Apr	7-May	17-May	28-May
Sarmatian	1-May	12-May	24-May	3-Jun
Scandinavian	8-May	19-May	31-May	10-Jun
Polynesian	15-May	25-May	7-Jun	17-Jun
Hibernian	22-May	4-Jun	14-Jun	25-Jun
Prussian	29-May	8-Jun	21-Jun	1-Jul
Moravian	5-Jun	18-Jun	28-Jun	8-Jul
Sarmatian	12-Jun	23-Jun	5-Jul	15-Jul
Circassian	19-Jun	30-Jun	12-Jul	22-Jul
Polynesian	26-Jun	6-Jul	19-Jul	28-Jul
Scandinavian	3-Jul	16-Jul	26-Jul	4-Aug
Prussian	10-Jul	19-Jul	2-Aug	11-Aug
Moravian	17-Jul	28-Jul	9-Aug	19-Aug
Sarmatian	24-Jul	3-Aug	16-Aug	25-Aug
Circassian	31-Jul	10-Aug	23-Aug	4-Sep
Polynesian	7-Aug	17-Aug	30-Aug	8-Sep
Scandinavian	14-Aug	25-Aug	6-Sep	15-Sep
Prussian	21-Aug	30-Aug	13-Sep	23-Sep
Caspian	28-Aug	7-Sep	20-Sep	29-Sep
Sarmatian	4-Sep	15-Sep	27-Sep	6-Oct
Circassian	11-Sep	22-Sep	4-Oct	14-Oct
Polynesian	18-Sep	28-Sep	11-Oct	20-Oct
Scandinavian	25-Sep	5-Oct	18-Oct	28-Oct
Prussian	2-Oct	16-Oct	25-Oct	3-Nov
Caspian	9-Oct	20-Oct	1-Nov	11-Nov
Sarmatian	16-Oct	27-Oct	8-Nov	19-Nov
Circassian	23-Oct	3-Nov	15-Nov	25-Nov
Polynesian	30-Oct	10-Nov	22-Nov	2-Dec

Table compiled from *Atlantic Mails* by J.C. Arnell, National Postal Museum of Ottawa, 1980.

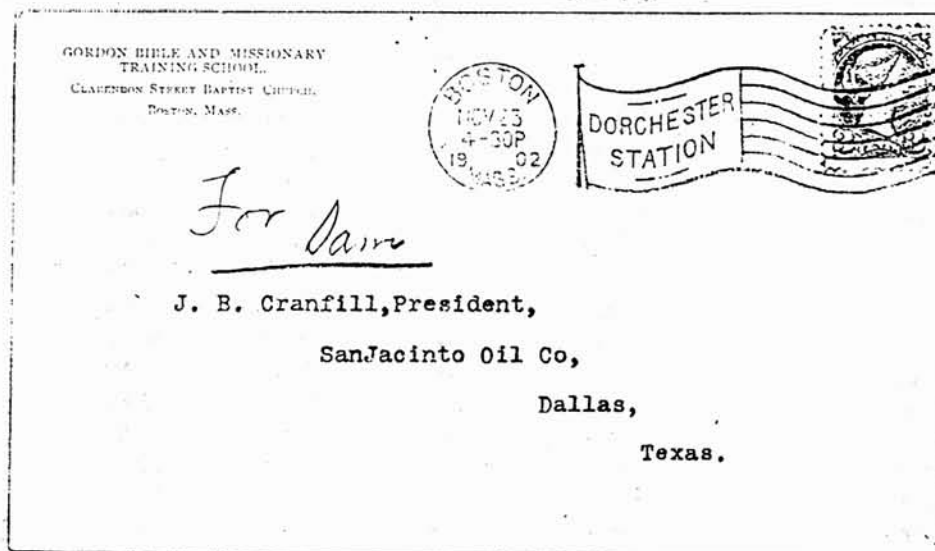
Chairman's Column – Ron Ribler

BNAPEX 98 in Orlando was attended by a relatively small number of members and dealers, but everyone seemed to have a good time and the camaraderie was, as usual, running high. I chaired a study group meeting on color and the three cents Small Queen. We had a lively discussion for an hour and a half about how to differentiate the shades and on how paper was made. Users of the Three-Cent Small Queen Color Guide all reported that, at last, there was a color guide that was useful.

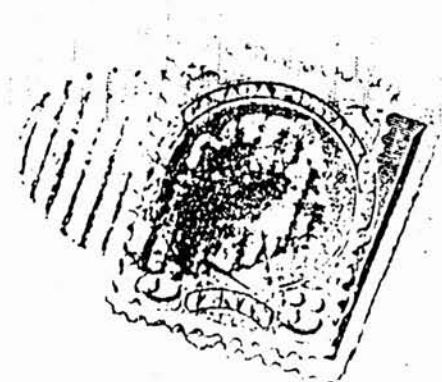
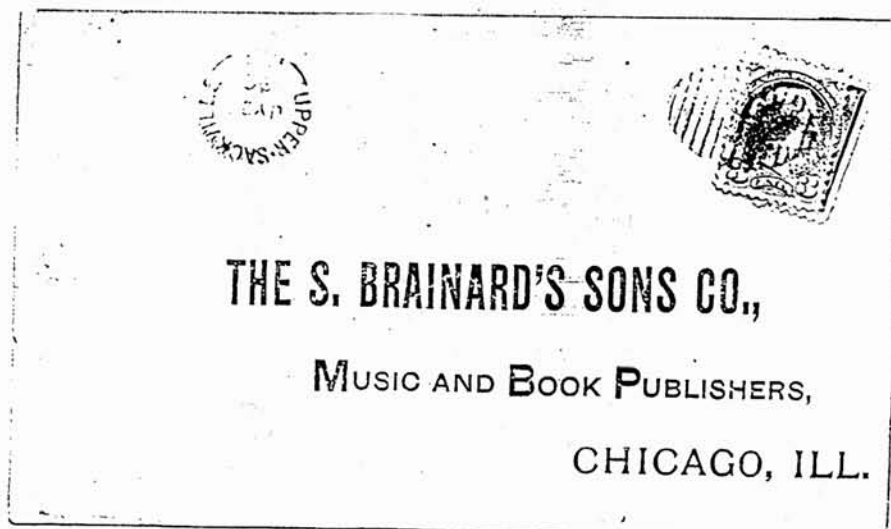
I was able to find a few items for my three cent Small Queens collection, which I showed and received a vermeil. Let's all go to BNAPEX 99 at Vernon next year and have a real meeting of the study group.

Lots of good reports were received about our newsletter and several new members should be forthcoming.

At the meeting I acquired a cover mailed from Boston, MA using a three cents Small Queen in 1902. It apparently passed through the mail stream without notice.



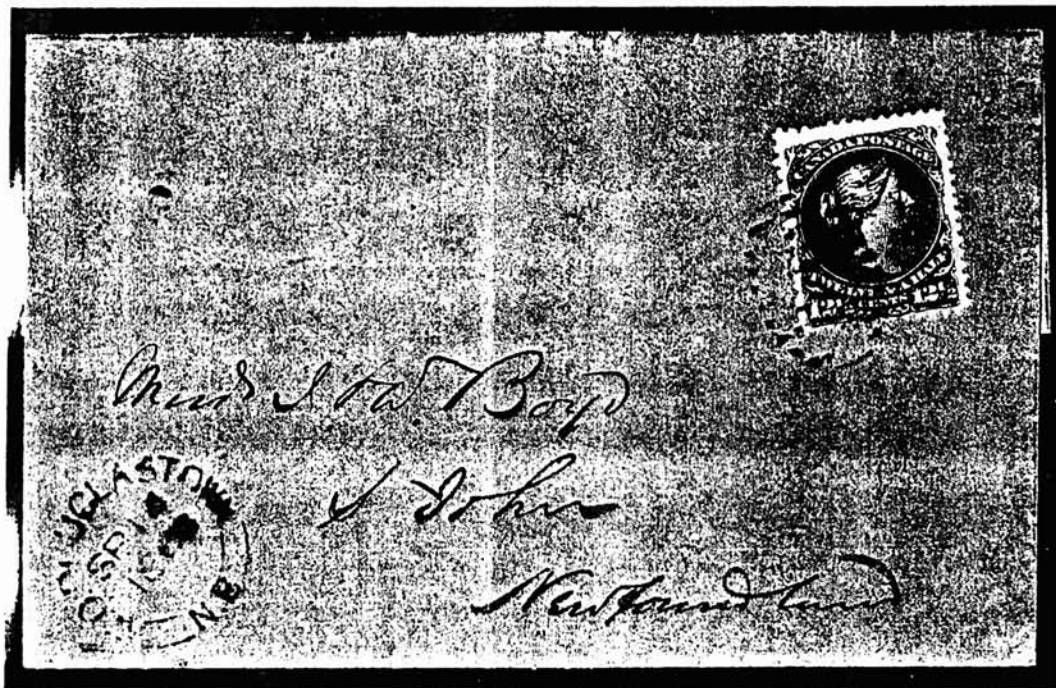
The second cover of interest for mail between the US and Canada shows a pre-stamped envelope from Chicago was sent to a customer in Canada who knew the US franking was not of value in Canada. Hre put a three cent Small Queen over the US stamp (Scott 219D) and mailed it to Chicago. I have seen an example of the recipient using the US franking successfully.



CANADA - LARGE QUEENS
1868

Twelve and one half cents
External Rate - Newfoundland

12½¢ per half ounce in effect from January 1, 1865 to October 31, 1872.



SP 14, 1868, Douglastown, New Brunswick to St-John's, Newfoundland via Chatham and Saint John, New Brunswick. Leaving Halifax, Nova Scotia September 25 by the Inman Line's *City of Durham* and arriving in St-John's September 28, 1868.

Early Dated Cancels on Large Queens

			Early Dated Cancel
Half Cent	Black	JU 7, 69	
One Cent	Brick Reds	Ap 17, 68	
	Brown Reds	Aug 8, 68	
	Orange Reds	May 17, 69	
	Roses		
	Deep Orange	Apr 23, 69	
	Yellow Oranges	Ju 25, 69	
	Yellow	Fe 25, 70	
Two Cent	Deep Green		
	Green	Au 1, 69	
	Blue Greens		
	Yellow Greens		
Three Cent	Brown reds		
	Roses		
	Reds		
	Orange Reds		
Five Cent	Olive Greens	76 Registered	
Six Cent	Dark Brown	Jy 7, 68	
	Brown	Dec 20, 69	
	Black Brown	May 16, 68	
	Yellow Brown	Mar 27, 70	
Twelve 1/2	Blue	Dec 14, 68	
	Deep Blues	Ju 27, 68	
	Light Blues		
Fifteen Cent	Purples	Oct 12, 69	
	Red Violets		
	Greys	FE 18, 98	
	Blues		
	Slates	Jun 98	
	Greenish shades		

This chart shows the early dated cancels of LQ's in two very non-representative collections. We invite you to "fill in the blanks" with the earliest dates in your collections