

August 2022
Dave Lacelle/Mike Halhed
fancycancel@hotmail.com

Group News.

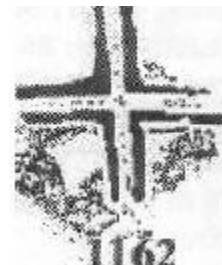
Hope to meet with you at the Calgary Convention. We have a Study Group meeting 12:00 to 1:30 Sunday Sept. 4. I will give a brief presentation on Fancy Cancels, and will show some of the earlier attempts to research this field. As I am a researcher and not a collector I do not really have any “gee whiz” stamp examples to show. This is where **YOU, gentle reader/collector, can help** by bringing in YOUR fancy cancels for the group to see. I will also bring in some postal artifacts such as the actual 1869 Crown Wax Seal hammer from Halls Harbour NS as shown in our book as L1271. (I’m not shy, if anyone wants this hammer, make me an offer, I think I paid \$50.00 for it 25 years ago. I am trying to lighten my house a bit as I get older!).



Other news, I am still working on my list of FC&MM Newsletters and “Lacelle numbers by newsletter number” as mentioned in NL 91. I am now down to NL29 and progressing slowly. This is one of those jobs that gets harder as you go further back. Items from the 1980’s may not (yet) have numbers which they obtained in more recent years. This searchable table should allow anyone to find more information on any listed cancel (or PO – see our Appendix 6, pg. 215) from the newsletters and then is shown in the summary details in our book.

REVISIONS TO PREVIOUS NEWSLETTERS

Newsletter 91, pg. 5. The “twisted” variant of L1162. This variant is consistent over four months, and is sufficiently different that it should have a new listing. Tentatively L 1162a.

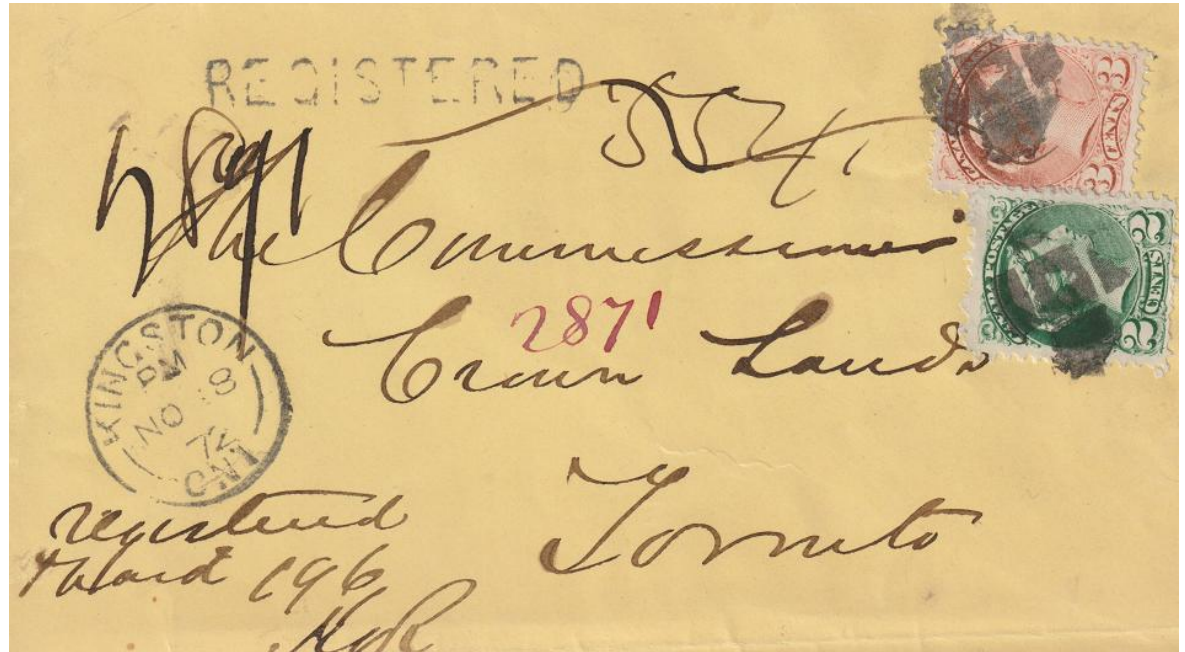
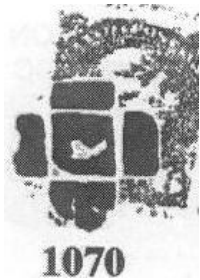


Newsletter 91, pg. 4. This “late use of the Ottawa Crown L1284, and squared circle, on Map stamp” is presented in more detail in The Roundup Annex, The Squared Circle S.G. Newsletter, June 2022.

CORRESPONDENCE AND QUERIES

Mike Halhed sent in the bunch of goodies below.

L1070, early state. One of the "Kingston Crosses" series, see pg. 8 for more on these.



This is L304, Port Carling Ont., Oct. 1876- Oct. 1879. PM "BMJ's" initials. Varies slightly from our book's illustration as this is a very early strike.



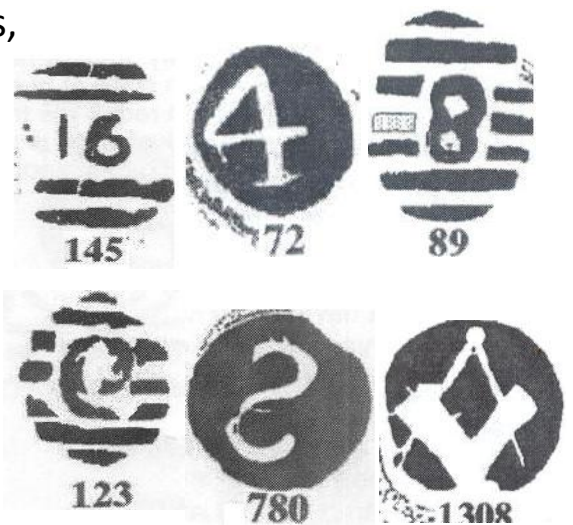
This is L 879, a PO initial type, see L894 &



L897. A new early date, Waterford Ont., Mar.12th 1888 – Aug. 1890. (I cheated and "cut" this down to fit the page. Sorry Mike.)



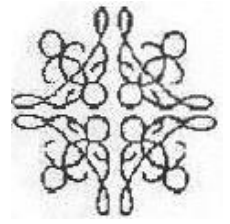
Mike also sent in this "Toronto Geometric", Mar. 1870, similar to L1628 Mar. 1870 to Dec. 1871. I had three possible "similar to L1628" items in my earlier notes but decided they were minor (cleaned or aged) examples. This item is different enough and possibly just before L1628 that it should have a new listing, tentatively L 1628a. I have one reservation about it the CDS and cancel ink seem to be different. This is not a major concern, there were over 20 Toronto PO clerks, and each probably had their own inkpads. I have tried to duplicate the fine lines in this type of cancel, the material must have been very soft. (I went over my old notes and found at least five other examples of L1628a. It is also not a copy of any of the old cancel illustrations.) See also the "Toronto 2" series, especially L37 used in Jan. 1870.



The item above locates L145 as Simcoe Ont. Mar. 1892. Mike wonders why numeral 16 (or 91?) for Simcoe? Simcoe used other numbers an "S" and three different Masonic symbols. Perhaps there is some local Masonic meaning to this?. Could the two mirror image ones be deliberate? L780 was in use for at least 15 months. Curiouser & curiouser...

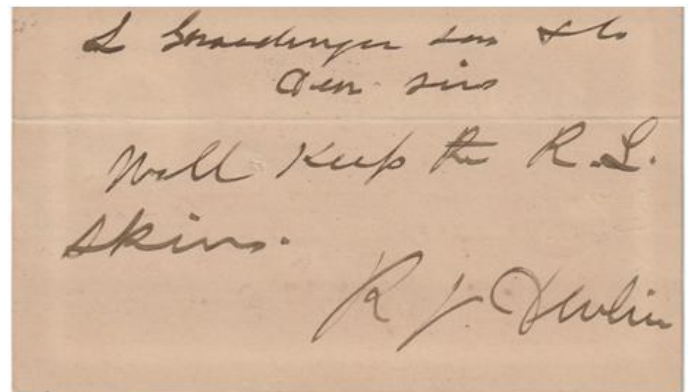
BNAPS FANCY CANCEL & MISCELLANEOUS MARKINGS NEWSLETTER 92

Mike also had a query about “how many covers are there of L1456 from Craighleith UC May 1872? In the first edition of our book the PO was unknown and the cancel was thought to be foreign in that the type of design was similar to “New York Foreign Mail” cancels, see D481, D483 etc & Appendix 3b pg. 205. A report (and tracing) of it appearing on “Cents Issue (Sc.18) issued 1859” 1872 (month not stated) appeared in “Stamps Magazine” (discontinued) in 1959. A later report stated that it was on cover “May” 1872. I am unable to tell if these are two different covers, however I listed it on the assumption they were. There may be others, any out there? I would like to add that just because a cancel is listed as used in one month in our book does not mean only one cover is known. There might be many uses in 30 days. One final comment on this cancel, I suspect the cancel is from a leather workers tool, it would make nice repetitious designs on a belt.



Randy Evans has done his usual thorough research on the background of the cover (also from Mike Halhed) text on pg. 3 of our last NL (#91). I will let his response speak for itself.

“In particular am writing in response to your question on whether the sender could have been an Ottawa furrier.



From the front cover, the name on the left side seems to be “R.J. D(possibly) e v..i..” The left hand notation also says Ottawa, 1880

On the reverse side, the signature appears to be “Ri..”

I checked the Ottawa City directory for 1880 and found a “R.J. Devlin – Hatters and Furriers.” at p.251.

Based on the apparent, legible letters in the name as shown front and back, I believe that R.J. Devlin would be a match. Particularly when one adds in the reference to the furs.

Attached is some info on Devlin’s operation. Substantial and one which could conceivably have had a Montreal jeweler as a client.”

Thanks Randy. If I remember correctly from an earlier NL, Devlin’s later became or was a good part of the original Ottawa “Morgan’s” high class luxury store.

BNAPS FANCY CANCEL & MISCELLANEOUS MARKINGS NEWSLETTER 92

Now time for something completely different. Mike Street sent in the Paquebot cover below. Pursers approval at lower left, SS Waitomo, Auckland New Zealand paquebot cancel on Canadian stamps to Philadelphia USA, and redirected to "5207 Berks".



About a year ago (NL 87) Mike sent in the results of a search of paquebot / Canadian items on eBay. I stated that I would run about 16 of them in NL 87 and future newsletters. Due to a file save error on my part these are about ½ scale.



Canada stamp, Mailship Anna Mersk, Singapore Paquet CDS to USA



Canada stamp, ??? Lady? Ship, GPO Barbados POSTED ON BOARD to Canada



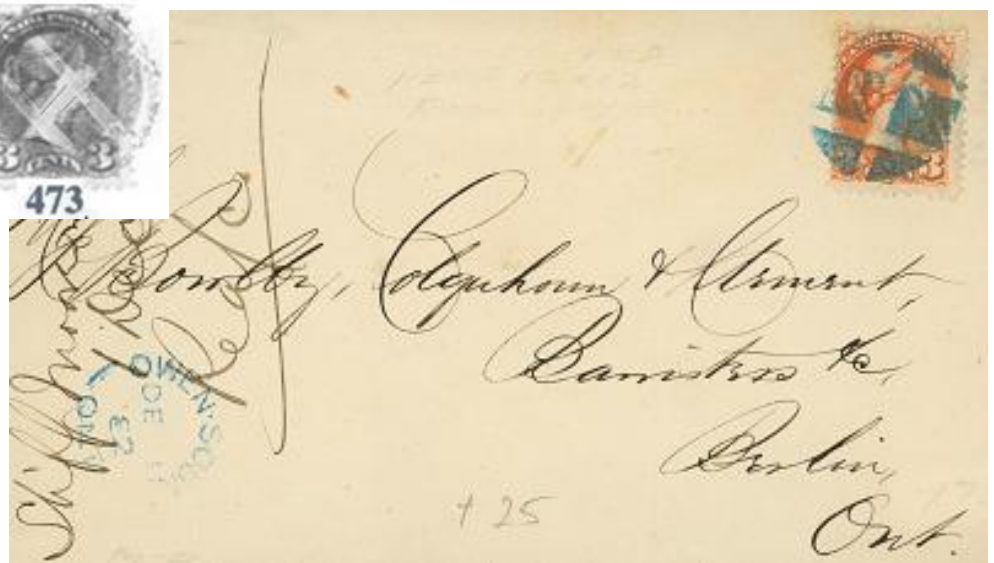
Canada /German? Stamps, Lady Bell MS, Paquebot to USA



Canada stamp, SS Golden Gate ? CDS ?, to USA.

BNAPS FANCY CANCEL & MISCELLANEOUS MARKINGS NEWSLETTER 92

Phil Visser (Owen Sound cancels) sent in these pretty blue oval corks possibly a letter "H". Used at Owen Sound Ont. Dec. 1882 to Aug. 1883. A somewhat similar "H", L473, was used at Toronto in August

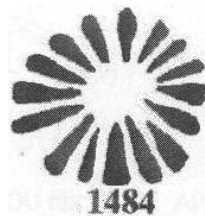


1883. However, it was for registered items, has not been reported as blue and is circular in design not oval.

Phil also sent in this Feb. 1883 example of L1484 used at Owen Sound Oct 1872 to Apr. 1874. Owen Sound "corks" seem to have



lasted a long time, sometimes over two years and were probably made of hardwood. The oval design also would not



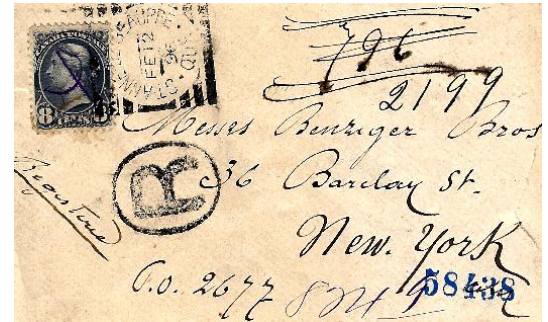
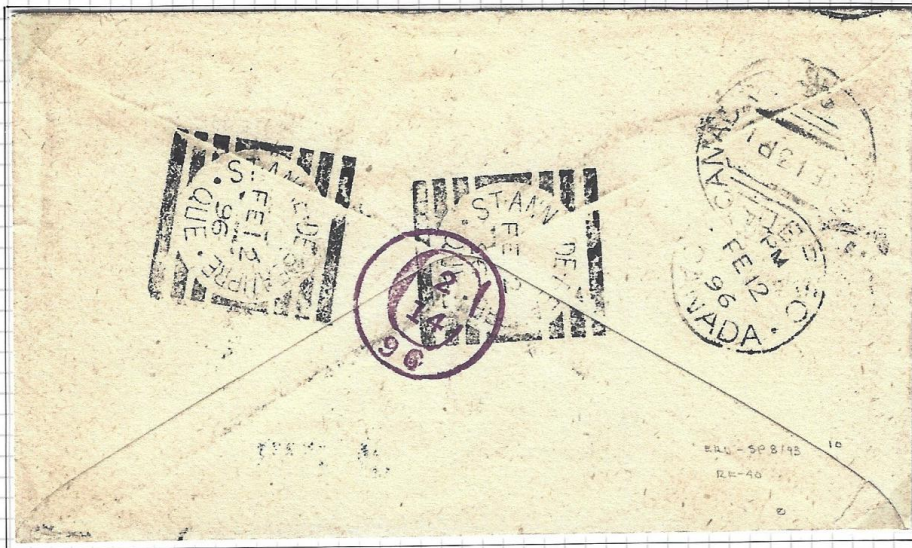
work for a bottle cork. One source of oval hardwood would be old (broken) ax handles. They would also have a nice hand grip.

Two wooden ax handles, a good source for oval hardwood used for (so called "cork" oval cancels. Cutting ax at top, heavier duty splitting ax below.



BNAPS FANCY CANCEL & MISCELLANEOUS MARKINGS NEWSLETTER 92

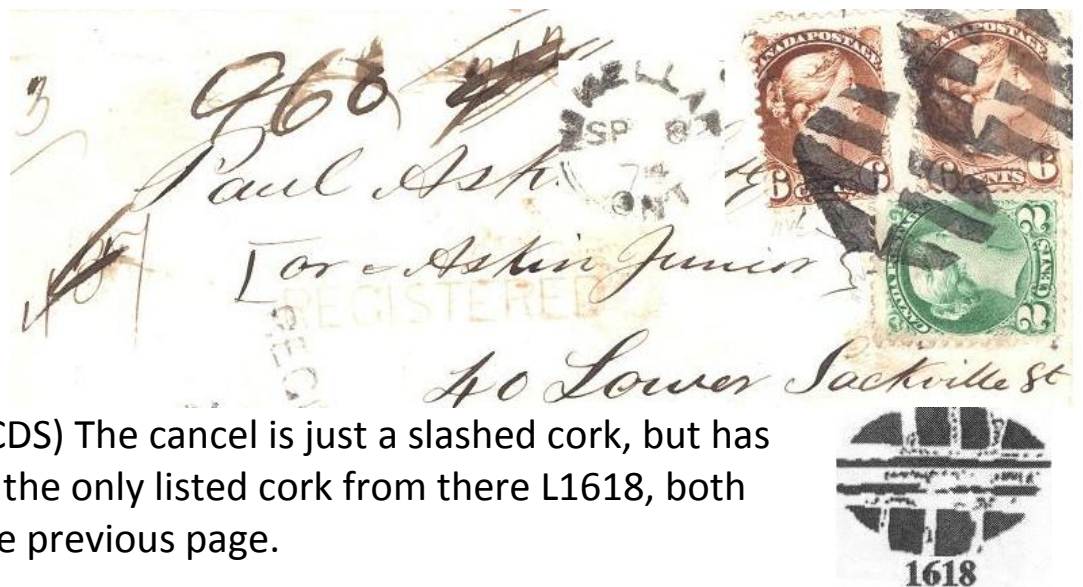
I was able to provide information regarding this cover in the June Squared Circle N.L. the "C" mark on back. It is our D156a, a New York City "C Depot" receiving mark. There are several other NYC Depot cancels in our book. Thanks to B. Pawluk.



D156a

Back full scale,
front ½ scale,
contrast adj.

Jason Broersma sent in this somewhat "busy" cover from Mc Kellar Ont. Sept. 1874 to Ireland. (I



cut it & moved the CDS) The cancel is just a slashed cork, but has a commonality with the only listed cork from there L1618, both are oval "corks". See previous page.

His other cover is the opposite, almost no information, nor back stamps. Jason suggests it is from the 1880's and may be a "leaf" design. We have no listed similar leaf designs from the 1880's. I tried to highlight the cancel but the multitude of strikes on a black stamp made it impossible. Do any of our members have a better strike?

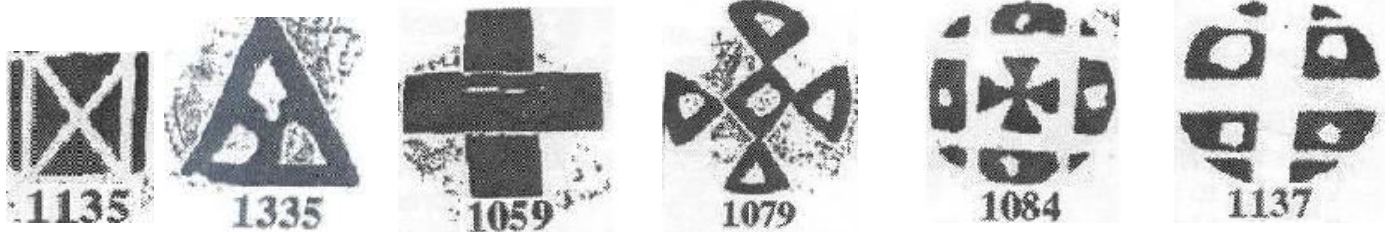


BNAPS FANCY CANCEL & MISCELLANEOUS MARKINGS NEWSLETTER 92

Brian Hargreaves sent this Kingston Ont. cover, June 1875 and suggested that it was an unlisted "Kingston 9" (an IX) see our L99 to L120 used from Sept. 1869 to Feb. 1871. In the same month PM Deacon started a series of "cross" cancels, probably reflecting upon the religious nature of his name. There

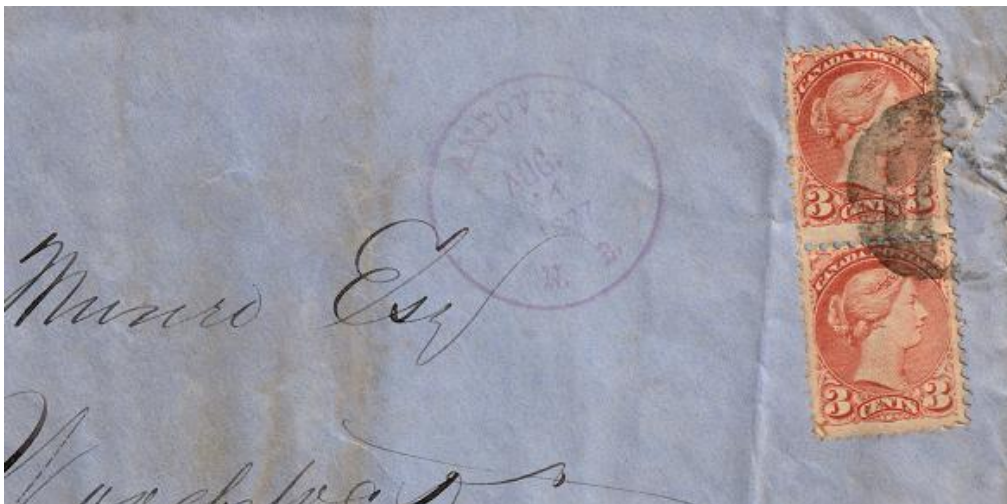


were at least 17 different crosses up to July 1877. Brian's cover is L1135, located as Kingston Aug. 1875 in our N.L. 82. Brian's cover confirms this and extends it back to June 1875. Kingston also used a couple of Masonic (?) triangle cancels L1335 in Sept. 1875 and L1338 in 1872. It is interesting that this Odd Fellows cover has a "Cross" just before the (sorta) competing Masonic cancel used the next month!



FAKES, BOGUS, AND SPURIOUS ITEMS

This item at first appears to be a partial strike of L 487, a PM's initial from Andover NB, and is a new early date by two months Aug. 1877- Oct. 1881. Our book states that fakes with taller letters are known see D244 of the fake in our book. The letters are taller here. This cancel was faked by Lester Littlefield and is listed in



BNAPS FANCY CANCEL & MISCELLANEOUS MARKINGS NEWSLETTER 92

our book, Appendix 8. The Littlefield index card did not give a CDS date which is unusual – possibly because it is so weak. I have fiddled with the contrast of the CDS, and it has an odd font (serifs) for a Canadian CDS, and is in purple while the cancel is black which is another bad sign. The cover appears to have been cut down about 30mm at the left (the illustration here has been further reduced to save space) where the original stamp may have been. This faking of a dramatic item is typical “Littlefield”, 28 of his 35 (recorded) fakes are initial/letter types however he usually did not do partial strikes.