

FIRST IMPRESSIONS

NEWSLETTER OF THE BNAPS

FIRST DAY COVER STUDY GROUP

ISSUE 48, OCTOBER-DECEMBER 2021

CONTENTS

	AUTHOR	PAGE
Commercial First Day Covers Part IV: Sterling Office	Bob Vogel	2
First Day Covers by William R. Long, 1970-1971	Jan Pieter (John) van der Ven	11
The 1976 James Cook FDC of Captain C. Burroughs	Daryl Kibble	13

EDITOR'S NOTES

Three quite diverse topics are presented in the three articles in this issue. Bob Vogel's series on commercial FDCs continues with the products of Sterling Offices, and John van der Ven reports on the covers produced by William Long of Nova Scotia.

Daryl Kibble contributed a short article on a unique FDC marking the anniversary of James Cook's voyage to the north part of North America. This month Daryl is also publishing an 80-page book reviewing Canadian first day and event covers celebrating Cook's voyage. If you're interested, the book is obtainable through the following website:

[Captain James Cook > Captain James Cook: Third Voyage 1776-1780 First Day and Event Covers. Daryl Kibble. 2020 \(captaincooksociety.com\)](#)

In a note to the editor, Doug Lingard expressed his appreciation for the articles prepared by John van der Ven about the early FDCs produced by stamp clubs but noted that in Issue 47 there were a couple of miscues. Colin Bayley died in 1992, not 1962 and Hamilton did not have a stamp club until 1887, not 1847.

From Sparks Auctions: We are pleased to invite you to have a look at our next sale, scheduled for November. One of the many highlights of the sale will be another installment of the Jan van der Ven collection of Canadian and worldwide first day covers. These offerings include many difficult to find and seldom seen cachets as well as many other interesting items. An announcement email will be sent to all our regular customers in October, please contact us if you would like to be included in our email announcements.

Stéphane Cloutier, FRPSC, FPHSC, Auction Manager, Sparks Auction
1770 Woodward Drive, Suite 101
Ottawa, ON K2C 0P8
(613) 567-3336 tel. (613) 567-2972 fax
(844) 252-2032 toll-free

SUBMITTING ARTICLES

Articles should be submitted in MS Word and scans should be separate attachments in JPEG format at 300 dpi. E-mail submissions should be sent to the Editor, Gary Dickinson, at gandbdickinson@shaw.ca.

COMMERCIAL FIRST DAY COVERS PART IV: STERLING OFFICES OF CANADA LTD.

by Bob Vogel

Sterling Offices was a worldwide re-insurance company with three offices in Canada based in Montreal Toronto and Vancouver. International offices were in London England, New York, San Francisco, Paris France, and Sydney Australia. The Toronto office began their first day cover program in 1958 and continued until the late 1970s.

The cover design was very basic as the company corner card occupied the top left corner of every cachet with the company logo and worldwide locations listed below. The bottom left portion of the cover showed the purpose of the stamp along with the date of issue and the note First Day Cover. None of the Sterling covers had the official cancellation from Ottawa but they were all cancelled in Toronto with various type of cancels. The cover design remained the same throughout its period with only minor changes.

The first Sterling FDC for Scott 375 is shown in Figure 1. The envelope measures 155 x 105 mm. and has a Toronto barrel cancellation.

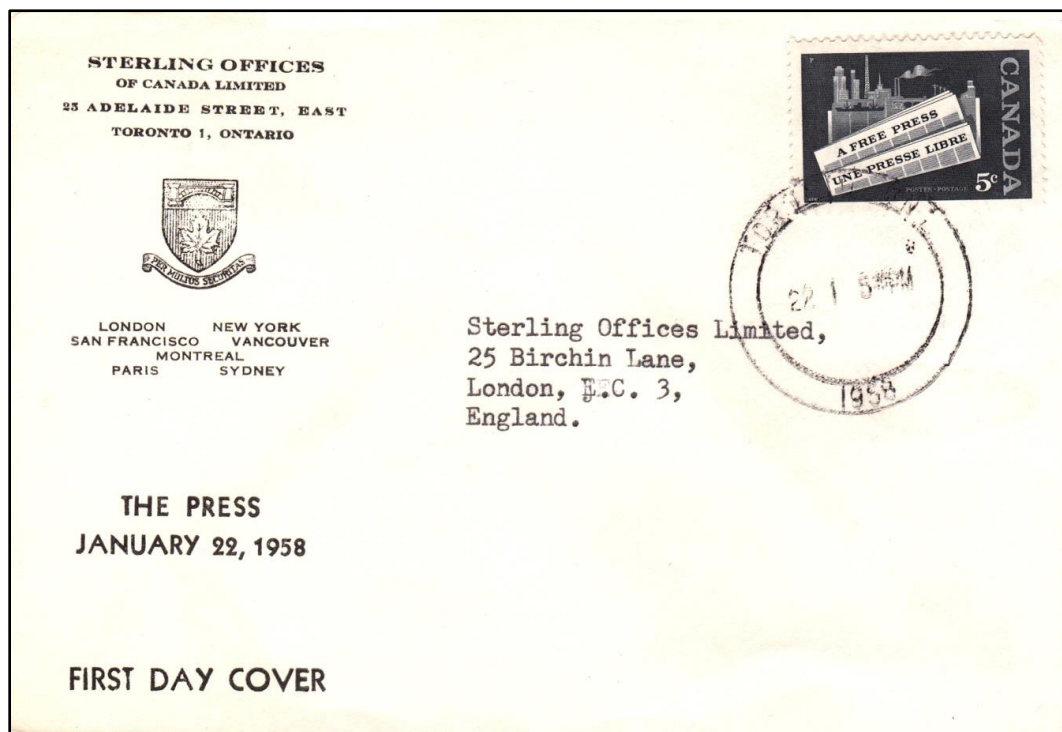


Figure 1

In 1958 the envelope dimensions were changed to 190 x 102 mm. and Mexico City was added to the international office locations. In 1964, for the Charlottetown Conference issue (Scott 431), Mexico City was dropped from the corner card and Chicago was added. The Wildlife Series - Birds of 1969 (Scott 496-498) saw the addition of Atlanta, and Hong Kong was added in 1970 for the Sir Oliver Mowat issue. During 1974 the first cachet with a major change was for the World Cycling Championships (Scott 642, Figure 2) which saw the removal of the company logo and the list of their international offices.

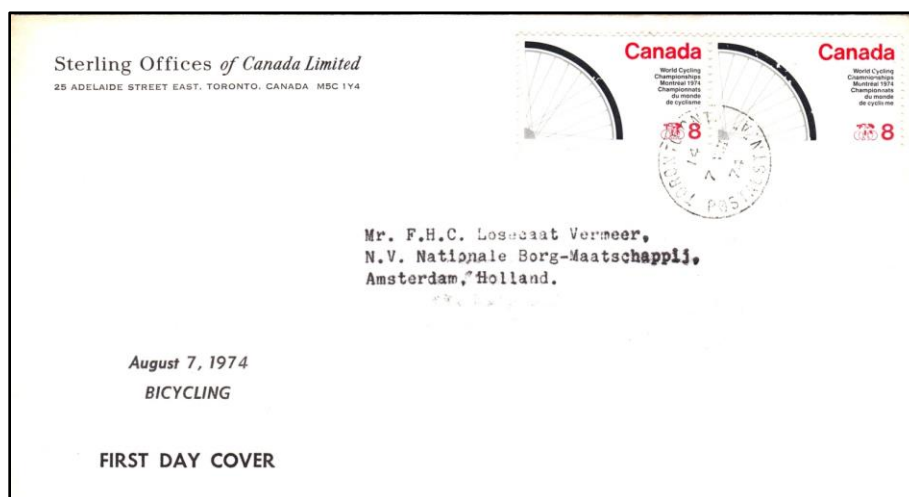


Figure 2

The inserts (Figures 3 to 6) illustrated below varied over the years. Insert Type 1 came in three different sizes, with measurements as follows: Type 1a 152 x 105mm., Type 1b 133 x 96mm., and Type 1c 133 x 90mm. Insert Types 2, 3 and 4 measure 103 x 105mm., 122 x 99mm., and 127 x 94 mm. respectively. Insert Type 3 is an anomaly only used for Scott 617 (J.E.H. MacDonald).

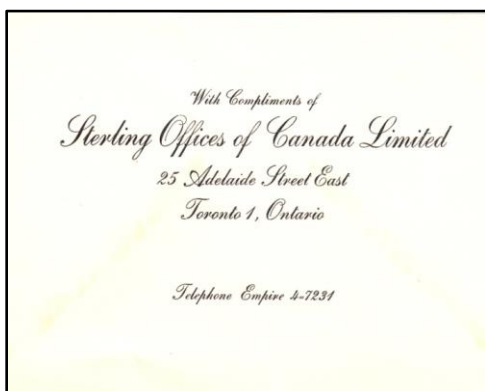


Figure 3 Insert Type 1

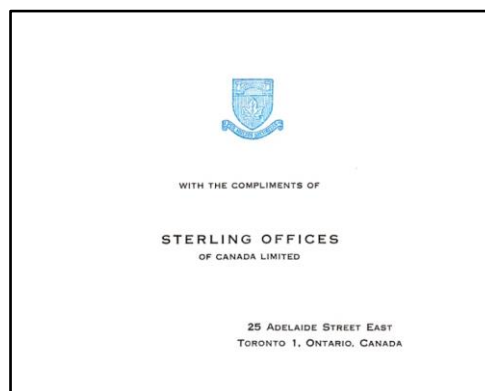


Figure 4 Insert Type 2



Figure 5 Insert Type 3

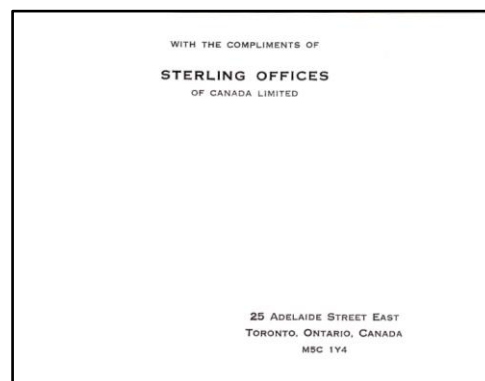


Figure 6 Insert Type 4

The checklist following shows in black the covers that the author has, in green the covers that are known to exist, and in red the covers which should exist except where noted. The checklist also indicates the type of insert that accompanies each FDC.

1958	Description	Insert
375	Newspaper Industry	Type 1a
376	International Geophysical Year	Type 1a
377	British Columbia Centenary	Type 1a
378	La Verendrye	
379	Founding of Quebec	
380	Health	
381	Oil Industry	Type 1a
382	First Elected Assembly	Type 1b
1959		
383	First Flight – Silver Dart	Type 1b
384	NATO	Type 1b
385	Country Women	
386	Royal Visit	Type 1b
387	St. Lawrence Seaway	
388	Plains of Abraham	Type 1a
1960		
389	Girl Guides	
390	Battle of long Sault	
1961		
391	Northern Development	Type 1a
392	Pauline Johnson	Type 1a
393	Arthur Meighen	Type 1a
394	Colombo Plan	Type 1a
395	Resources for Tomorrow	
1962		
396	Education	Type 1a
397	Red River Settlement	
398	Jean Talon	
399	Victoria Centenary	Type 1a
400	Trans-Canada Highway	Type 1a
401,404	1¢ & 4¢ Cameo Issue Mineral & Electrical Industries	Type 1a
402,403	2¢ & 3¢ Cameo Issue Canadian Fishing & Lumbering Industries	Type 1a
405	5¢ Cameo Issue Canadian Wheat & Grain Industries	
1963		
410	Casimir Gzowski	Type 1a
411	\$1.00 Export (probably does not exist)	
412	Frobisher	Type 1a
413	Postal Service	Type 1a
1964-1966		
414	7¢ Jet Plane	Type 1a
415	15¢ Geese	Type 1a
416	World Peace	
417	Maple Leaves-Unity	Type 1c
418-419	Ontario & Quebec Flower & Coat of Arms	
420-421	Nova Scotia & New Brunswick Flower & Coat of Arms	Type 1a
422-423	Manitoba & British Columbia Flower & Coat of Arms	

424	Prince Edward Island Flower & Coat of Arms	Type 1a
425-426	Saskatchewan & Alberta Flower & Coat of Arms	Type 1a
427	Newfoundland Flower & Coat of Arms	Type 2
428-429	Yukon & Northwest Territories Flower & Coat of Arms	Type 2
429A	Canada Maple Leaf & Coat of Arms	Type 2
1964		
430	8¢ on 7¢ Jet Plane surcharged (no official day of issue)	
431	Charlottetown Conference	Type 1c
432	Quebec Conference	Type 1c
433	Royal Visit	Type 1c
434-435	1964 Christmas Combination	
436	8¢ Jet Plane	Type 1c
1965		
437	International Co-operation Year	Type 1a
438	Sir Wilfred Grenfell	Type 1a
439	Canadian Flag	
440	Sir Winston Churchill	Type 1a
441-442	Inter-parliamentary Union - National Capital Combination	Type 1a
443-444	1965 Christmas Combination	Type 1a
1966		
445	Alouette II	
446	de La Salle	
447	Highway Safety	Type 2
448	London Conference	Type 2
449	Atomic Reactor	Type 2
450	C.P.A. Conference 5¢ Library	Type 2
451-452	1966 Christmas Combination	Type 2
1967		
453	Centennial of Confederation	Type 2
458	5¢ Blue Centennial Definitive	
460	6¢ Black Centennial Definitive	Type 2
469	EXPO 67	Type 2
470	Votes for Women	Type 2
471	Royal Visit	Type 2
472	Pan-American Games	Type 2
473	Canadian Press	Type 2
474	Georges Vanier	
475	Toronto Centenary	
476-477	1967 Christmas Combination	Type 2
1968		
478	Gray Jays	
479	Meteorology	Type 2
480	Narwhal	Type 2
481	International Hydrological Decade	Type 2
482	Nonsuch	Type 2
483	Lacrosse	
484	George Brown	Type 2

485	Henri Bourassa	
486	Armistice	
487	John McCrae	Type 2
488	5¢ 1968 Christmas	
489	6¢ 1968 Christmas	
1969		
490	Curling	Type 2
491	Vincent Massey	Type 2
492	Suzor-Coté	
493	International Labour Organization	Type 2
494	First Non-stop Transatlantic Flight Alcock Brown	Type 2
495	Sir William Osler	
496-498	Wildlife Birds Combination	Type 2
499-500	Charlottetown & Canada Games Combination	Type 2
500	Canada Games	
501	Sir Isaac Brock	Type 2
502	1969 Christmas 5¢	Type 2
503	1969 Christmas 6¢	
504	Stephen Leacock	Type 2
1970		
505	Manitoba Centennial	Type 2
506	Northwest Territories Centennial	Type 2
507	UN-Biological Programme	Type 2
508-511	EXPO 70 Combination	Type 2
512	Henry Kelsey	Type 2
513-514	United Nations 25 th Anniversary Combination	Type 2
515	Louis Riel	Type 2
516	Alexander Mackenzie	
517	Sir Oliver Mowat	Type 2
518	Group of Seven	

519-523	1970 Christmas 5¢ Combination	
524-528	1970 Christmas 6¢ Combination	Type 2
529-530	1970 Christmas 10¢ & 15¢ Combination	
531	Sir Donald Smith	Type 2
1971		
532	Emily Carr	Type 2
533	Discovery of Insulin	Type 2
534	Ernest Rutherford	Type 2
535	Maple Leaf in Spring	
536	Maple Leaf in Summer	
537	Maple Leaf in Autumn	Type 2
538	Maple Leaf in Winter	
539	L.J. Papineau	
540	Samuel Hearne	
541	CBC	
542	Census	Type 2
543	7¢ Centennial Queen	
544	8¢ Centennial Queen	
552	British Columbia	
553	Paul Kane	
554-557	1971 Christmas Combination	
558	Pierre Laporte	Type 2
1972-1976		
559	Figure Skating	
560	UN World Health Day	Type 2
561	Frontenac	
562-563	Plains Indians Buffalo Chase & Indians Indian Artifacts Combination	Type 2
564-565	Plains Indians Assiniboine Thunderbird & Sun Dance Costume	Type 2
566-567	Algonkian Indians Artifacts & Micmac Indians	Type 2
568-569	Algonkian Indians Thunderbird & Belt & Algonkian Couple	
570-571	Pacific Coast Indians Nootka Sound House & Artifacts	Type 2
572-573	Pacific Coast Indians Chief & Blanket & Kwakiutl House Thunderbird	Type 2
574-575	Sub-Arctic Indians Montagnais-Naskapi Artifacts & Kutcha-Kutchin Dance	
576-577	Sub-Arctic Indians Kutchin Ceremonial Costume & Ojibwa Thunderbird	
578-579	Iroquoian Indians Cornhusk Mask & Artifacts & Iroquoian Encampment	
580-581	Iroquoian Indians Iroquoian Thunderbird & Iroquoian Couple	
582-585	Earth Sciences Combination	
586-591+593	Low value definitives (Caricatures)	
592	7¢ St. Laurent	Type 2
593A	10¢ Queen Caricatures	Type 2
594-598	Medium Value Definitive Combination	Type 2
600	\$1.00 Vancouver (probably does not exist)	
601	\$2.00 Quebec (probably does not exist)	
606-609	1972 Christmas Combination	
610	Cornelius Krieghoff	Type 2
1973		
611	Bishop Laval	

614	RCMP Centenary Combination	
615	Jeanne Mance	Type 2
616	Joseph Howe	
617	J.E.H. MacDonald	Type 3
618	Prince Edward Island	Type 2
619	Scottish Settlers	Type 2
620-621	Royal Visit	Type 2
622	Nellie McClung	
623	8¢ & 15¢ 1976 Olympic Games Combination	Type 2
625-628	1973 Christmas Combination	Type 2
1974		
629-632	‘Keep Fit’ Summer Sports Combination	Type 2
633	Winnipeg	
634-639	Letter Carrier Service Combination	
640	Agricultural College	
641	Telephone Centenary	Type 2
642	World Cycling Championship	Type 2
643	Mennonite Settlers	
644-647	‘Keep Fit’ Winter Sports Combination	
648-649	UPU Combination	
650-653	1974 Christmas Combination	
654	Marconi	
655	William Hamilton Merritt	
1975		
656-657	Olympic Sculptures High Value Combination (probably does not exist)	
658-659	Canadian Authors Lucy Maud Montgomery & Louis Hémon	
660-661	Marguerite Bourgeoys & Alphonse Desjardins	Type 2
662-663	Canadian Personalities Dr. Samuel Chown & Dr. John Cook	
664-666	Track & Field Events Combination	
667	Calgary Stampede	
668	International Women’s Year	
669	Supreme Court	
670-673	Coastal Vessels Combination	
674-675	1975 6¢ Christmas Combination	
676-677	1975 8¢ Christmas Combination	
680	Royal Canadian Legion	
1976		
681-683	Olympic Ceremonies Combination	Type 2
684-686	Olympic Arts & Culture Combination	
687-688	Olympic Sites Combination (probably does not exist)	
689	Winter Olympics	
690	UN – Habitat Conference	
691	1976 US Bicentennial Benjamin Franklin	Type 2
692-693	Royal Military College Combination	Type 2
694	Physical Disabled Olympics	Type 2
695	Robert Service Cremation of Sam McGee	Type 2
696	Germaine Guèvremont	Type 2

697-699	1976 Christmas Combination	
700-703	Inland Vessels Combination	
1977		
704	Silver Jubilee	Type 2
705-711	Definitives 1¢ - 10¢ Combination	
712	Definitives 12¢ Jewelweed	
713	12¢ Definitive Blue & Black Queen	Type 2
714	12¢ Definitive Parliament	
715	14¢ Definitive Parliament	
716	14¢ Definitive Red & Black Queen	
717	Trees 15¢ Trembling Aspen	
718	Trees 20¢ Douglas Fir	
719	Trees 25¢ Sugar Maple	
720	Trees 30¢ Red Oak	
721	Trees 35¢ White Pine	Type 4
723-725+712	Street Scenes 50¢, 75¢ & 80¢ Combination +12¢ Jewelweed	
726	Fundy National Park (probably does not exist)	
727	Kluane National Park (probably does not exist)	
732	Eastern Cougar	Type 2
733=734	Tom Thomson Combination	
735	Governors General	Type 2
736	Order of Canada	Type 2
737	Peace Bridge	Type 2
738-739	Joseph E. Bernier & Sir Sandford Fleming Combination	Type 2
740	Commonwealth Parliamentary Conference	
741-743	1977 Christmas Combination	Type 4
744-747	Sailing Ships Combination	Type 4
748-751	Inuit – Hunting Combination	
1978		
752	Flora & Fauna of the World, Peregrine Falcon	
753	12¢ CAPEX	
754-56	14¢, 30¢, & \$1.25 CAPEX Combination	Type 4
756a	Souvenir Sheet CAPEX	
757-758	XI Commonwealth Games Combination	
759-762	Commonwealth Games Combination	Type 4
763-764	Captain James Cook Combination	
764-766	Natural Resources Combination	
767	CNE	
768	Mère D'Youville	Type 4
769-772	Inuit Travel Combination	
773-775	1978 Christmas Combination	Type 4
776-779	Ice Vessels Combination	
1979		
780	Quebec Carnival	
789	17¢ Black & Green Queen Elizabeth II	
790	17¢ Green Parliament	
813-814	Endanger Wildlife Combination Spiny Soft-Shelled Turtle & Bowhead Whale	Type 4

FIRST DAY COVERS BY WILLIAM R. LONG, 1970-1971

by Jan Pieter (John) van der Ven

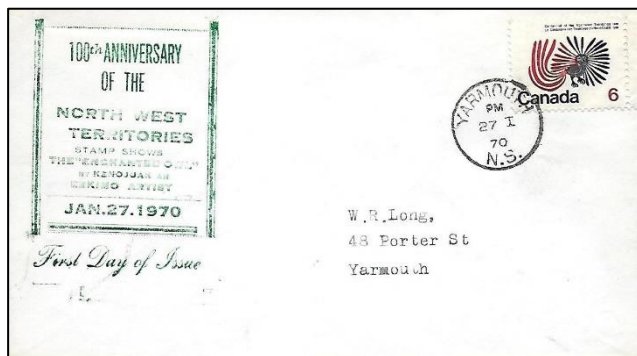
Although the maker of the FDCs shown in this article was not identified by a signature on the cachets, all except one of them was addressed to William R. Long of 48 Porter Street in Yarmouth, Nova Scotia, so Long is most likely their producer. The only examples I have been able to locate were for stamps issued in 1970 and 1971.

According to FDC Study Group member Brainard Fitzgerald, Long had an extensive cover collection from many different fields with a special interest in United States Navy ship cancellations.

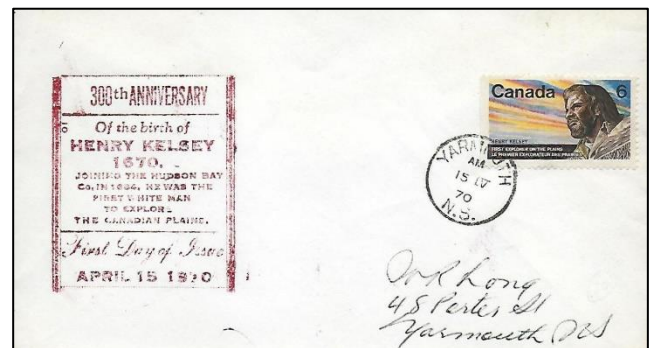
The format of the cachets is simple and always includes information specific to the purpose and date of the stamp issue. A small handpress was apparently used to produce the cachets because they are always straight on the envelope whereas a rubber stamp would not always have lined up properly. All the covers were cancelled at Yarmouth and addressed to Yarmouth, but it is not known if the cachets were applied before or after they had been cancelled at the post office.

In only one case was there an insert in the cover, and it only said that "This cover has been supplied in replacement of one that was spoiled in the process of cancellation." This may have been enclosed by the post office or it may have been used as an envelope stiffener by Long himself.

I have only seen these covers for the years 1970 and 1971, and I don't know if these were the only ones Long made or if his series of FDCs started before or continued after those years. It is, however, still an interesting and uncommon group of covers.



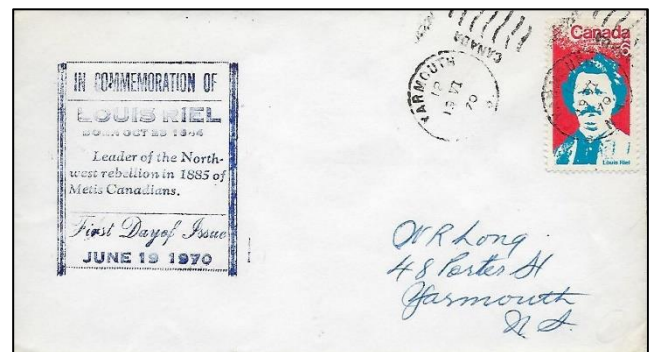
Scott 506



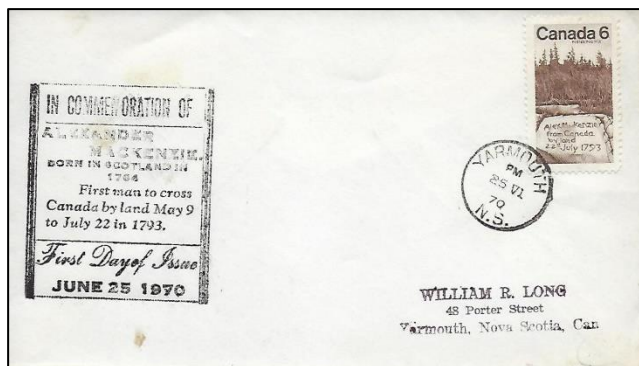
Scott 512



Scott 507



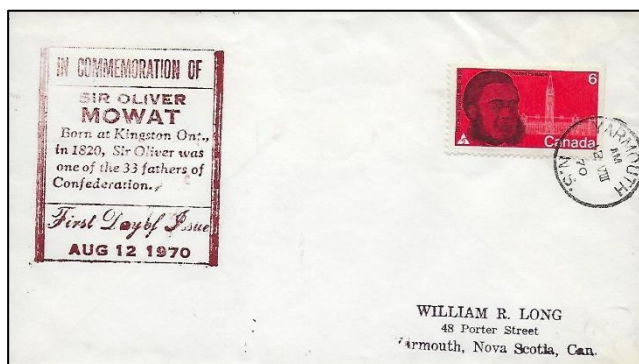
Scott 515



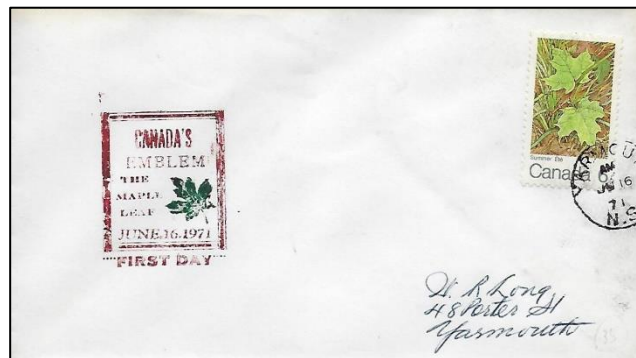
Scott 516



Scott 535



Scott 517



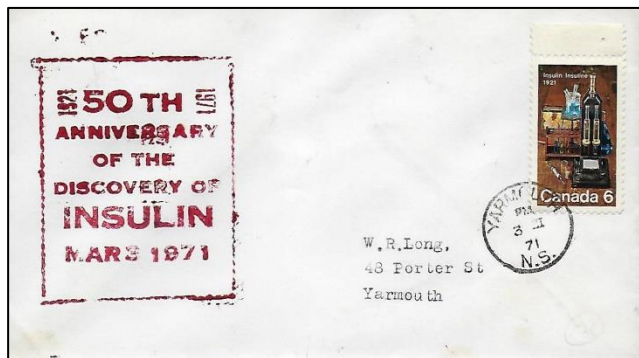
Scott 536



Scott 532



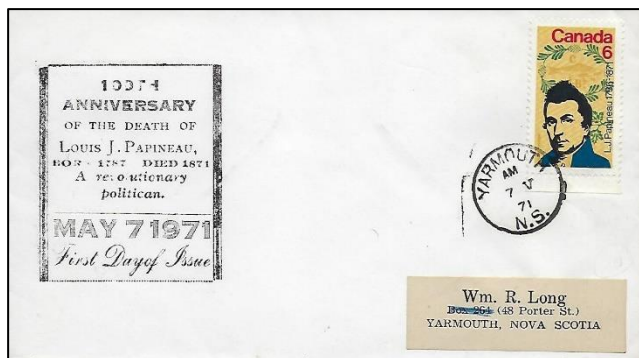
Scott 537



Scott 533



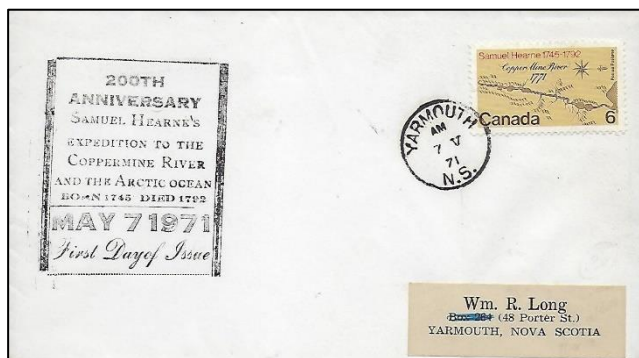
Scott 538



Scott 539



Scott 553



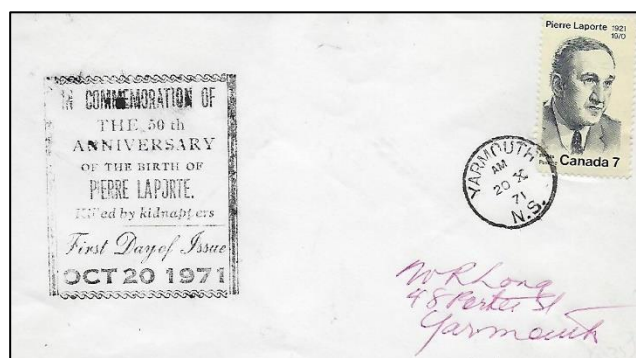
Scott 540



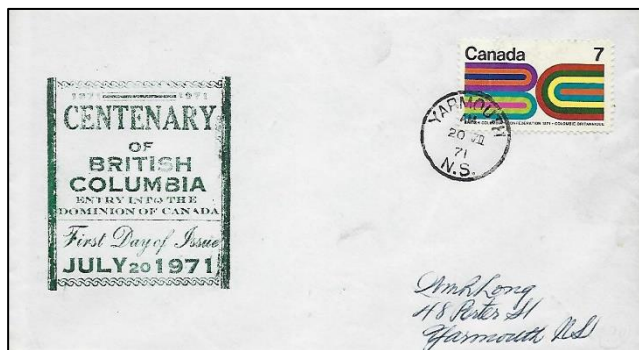
Scott 554-555



Scott 544



Scott 558



Scott 552

THE 1976 JAMES COOK FIRST DAY COVER OF CAPTAIN CHARLES BURROUGHS

by Daryl Kibble

Captain Charles A. Burroughs (born 1935) served in the commissioned corps of the U.S. Coast and Geodetic Survey (C&GS), the United States Environmental Science Services Administration, and the National Oceanic and Atmospheric Administration Corps (NOAA) from 1958 to 1985, including nine years of sea duty. Burroughs obtained a degree in civil engineering from the University of Connecticut in 1958, entering the C&GS that same year with a commission as Ensign. He attended graduate school (Major in Geodetic Science) from 1962-63 at Ohio State University. It was Captain Burroughs' studies in geodetic science which enabled him to help establish the first C&GS satellite triangulation tracking station in the Arctic.

Captain Burroughs was involved in surveying much of the Alaskan coast which was originally charted by James Cook. He was given command of the NOAA ship *Fairweather* (MSS20) during 1972-73, where he made modern hydrographic surveys of Cook Inlet and Glacier Bay, Alaska utilising automated hydrographic survey systems. He also surveyed the coasts of Washington State, California, and Hawaii.

While captaining the *Fairweather*, Captain Burroughs had polar collectors ask him to service Alaskan covers for them at places he visited during his 1972-73 expeditions. Burroughs then joined the American Society of Polar Philatelists (member #1683) in 1975. Burroughs used this early experience in making covers with postmarks to make first day and event covers for the 1978-79 200th anniversary of James Cook. All but one of his cachet designs (from Canada) were designed for use with USA postage stamps.

For the USA 1978 Cook issue, Burroughs made a single FDC cachet design from which he produced nineteen covers. Each FDC is marginally different due to the hand drawing added, and some have additional place names identified in the cachet. His method was to first make an original map cachet drawing and then to cut a rubber stamp of it. He would then use the rubber stamp as the primary map outline in his cachets before drawing the text in ink.

Burroughs used this same rubber stamp, combined with hand drawn text and route of Cook up to Nootka Sound, as the basis for his one and only FDC for Canada's 1978 James Cook issue (Scott 763-764). He only made one FDC of this issue for his personal collection which he exhibited at philatelic exhibitions in the USA.

Burroughs' original map cachet drawing which was photographed and then cut into a rubber stamp is illustrated in Figure 1, while his one and only Canadian FDC is shown in Figure 2. The hand-drawn text reads: "3/29 - 4/26 Ship Cove, now Resolution Cove ~ Nootka Sound S.E. end of Clerke Peninsula, s. of Bligh Is. Vancouver Island."

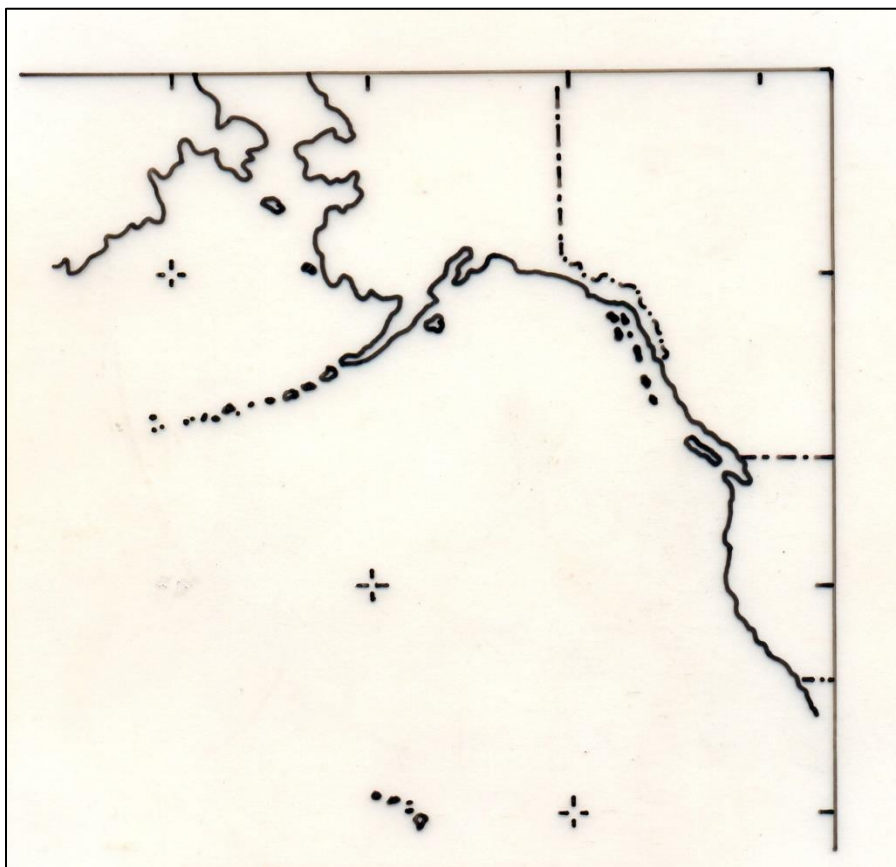


Figure 1. Burroughs original map drawing

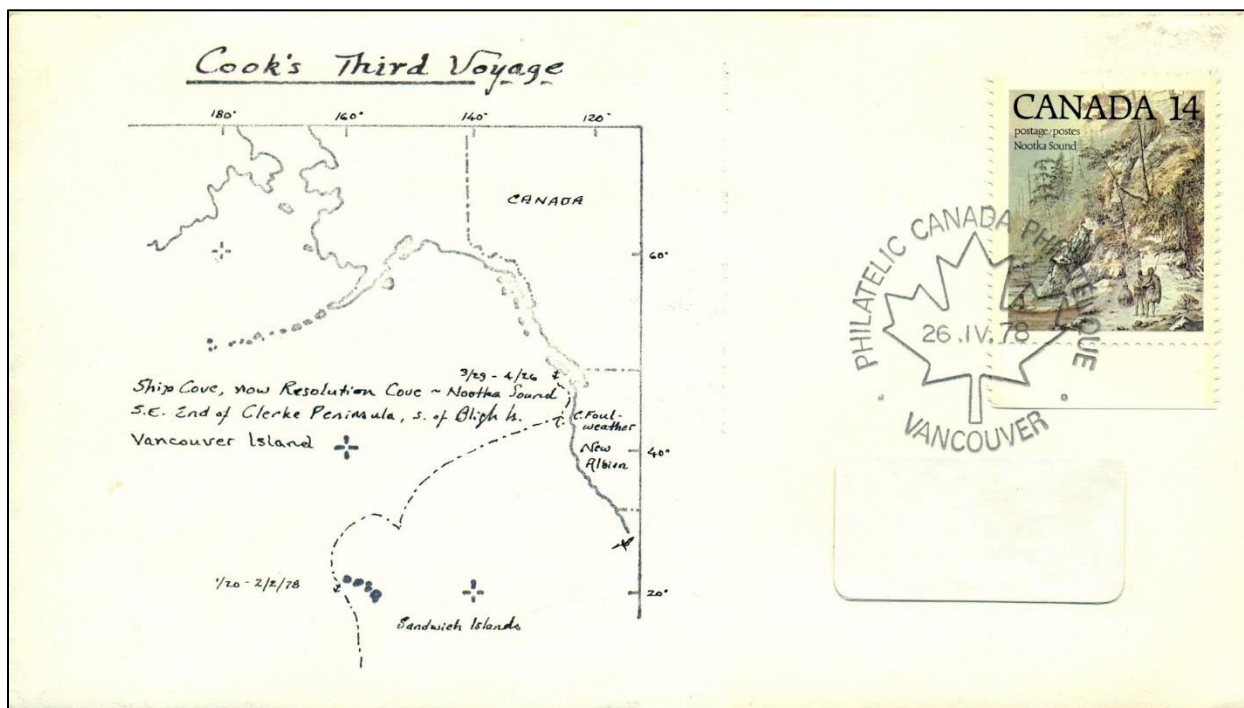


Figure 2. Burroughs sole first day cover