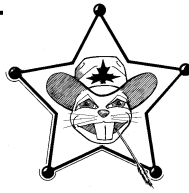


BEAVER



CHATTER

The Newsletter of the Prairie Beaver Regional Group of the British North America Philatelic Society, Ltd.
 Chairman: **George Dresser** Treasurer: **David Nickson** Editor: **Vic Willson**
 Volume 47, No. 2 Whole Number 159 JY 2022

JULY 16 MEETING IN COLLEGE STATION

Our next, in-person meeting will be at St. Mary's Catholic Center in College Station on July 16, 2022. Wear beach clothes with the level of heat we are experiencing. The agenda is on the next page.

UPU SMALL PACKET RATE 1979 - 2021

In my collection of Canadian UPU postal rates post-July 1, 1979, when weights changed from ounces to grams, I have very few covers rated at small packets. Likely few such articles were saved versus letters.



The table below shows the first few weight rates for each rate period up to the present

Fig. 1: Small packet air June 6, 1983 rated 76 cents for 20-50 grams by Air from London ONT to Channel Islands, UK

Fig. 2: Small Packet ? 2006 rated \$2.30 for under 250 grams by Air, overpaid 5¢, Wellesley ONT to Germany

The differences between air and surface were not great for much of the time, so surface usage appears very scarce.

After 2008 rates were calculated based on weight and destination.

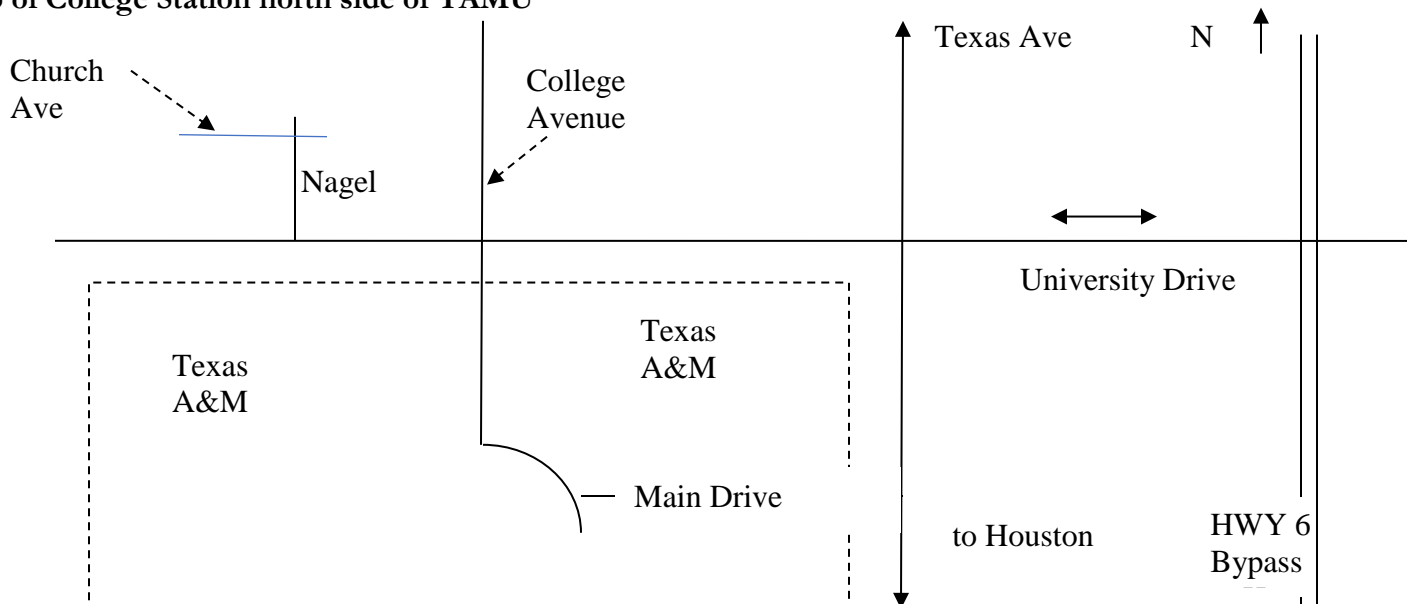


PRAIRIE BEAVER MEETING, July 16, 2022

SCHEDULE OF ACTIVITIES

8:45 - 9:00	Coffee, donuts, informal
9:00 - 9:15	Introductions
9:15 - 9:30	Book reviews- new BNAPS books
9:30 - 9:45	Internet review (new sites, action)
9:45 - 10:15	Swap, Sell, Buy, Trade
10:15 - 11:15	Presentation: The First Postage Due Issue of Canada 1906-1928- George Dresser
11:15 - 12:15	Clothesline Exhibit (BNA stuff, anything else of philatelic interest)
12:15 - 1:00	Lunch
1:00 - 1:15	Business meeting
1:15 - 2:00	Presentation: 4 th Bureau 100 th Anniversary Book- Jay Stotts
2:00 - 2:30	Swap, Sell, Buy, Trade
2:30 - 3:15	Presentation: Canada's 19 th Century 1 Cent Rates- Vic Willson
3:15 - 4:15	Donation auction- bring items
4:15 - 4:45	Unusual items- bring an item outside the usual to present
4:45 - 5:00	Wrap-up
5:15	Dinner at local restaurant

Map of College Station north side of TAMU



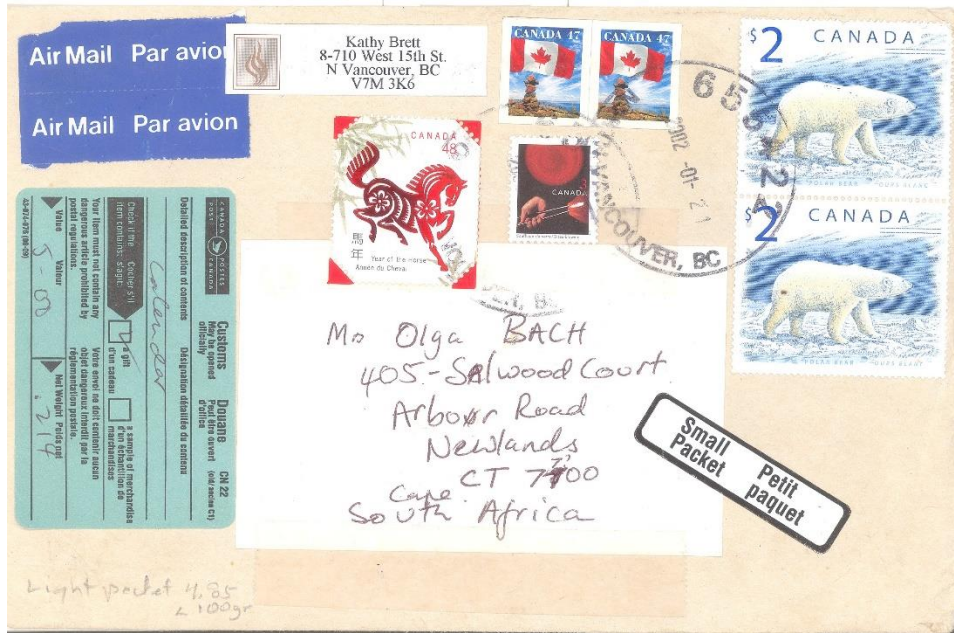


Fig. 3: Small packet Jan. 1, 2002 rated \$5.45 by Air for 100-250 grams Vancouver, BC to Cape Town, South Africa

After 2008, rates were calculated based on weight and destination.

While there may be rate tables for Small Packets for years after 2007, online calculation by Canada Post now provides the rate not only for weight and destination, but at some previous time by location in Canada. Parcels originally were charged by Province of sending to destination Province by 1912.

Fig. 4: Listed as Small Packet, the rate would have been \$7.60 by Air, while the Other Letter Rate available was \$3.49, which this cover fits paying \$3.70 Dartmouth NS to Greece April 14, 2007

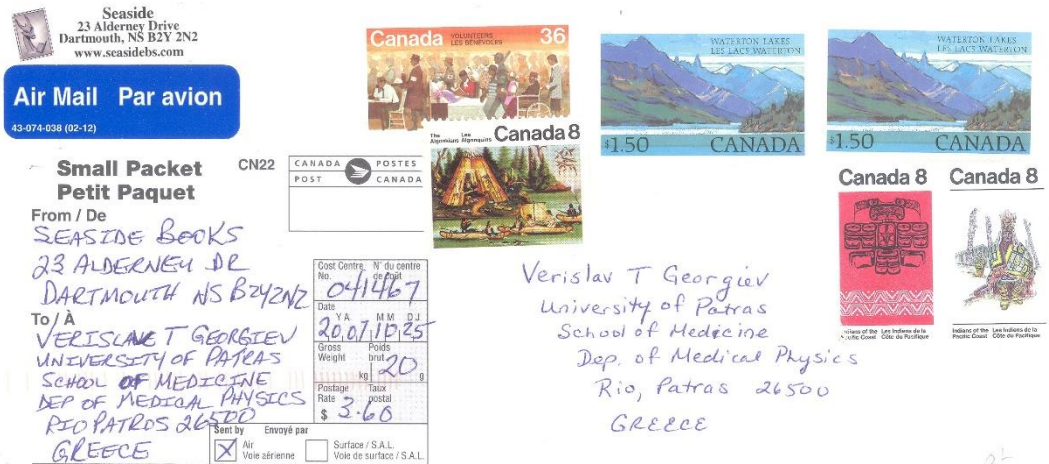


Fig. 5: Small Packet rate of \$7.60 by Air properly paid June 13, 2007 from Verona ON to England





Fig. 6: Small Packet paid at 7.90 by Air for 191 grams, overpaid 10 cents, from Verona ON to Germany June 10, 2008. Rate determined by Customs Form on reverse

Fig. 7: Small Packet paid at \$10.83 by Air for 96 grams from Ottawa ON to Ukraine July 13, 2012. Rate determined by Customs Form



Beaver Chatter is the unofficial newsletter of a bunch of BNAPS members who, through no fault of their own, happen to live in the state of Texas. Opinions expressed are those of the authors who like to put their thoughts, philatelically or otherwise, into writing. Unless noted, articles are the effort of the Editor. Distribution is free to BNAPS members in the area who find it worth their while to participate in the group's activities, to certain BNAPS officials, and to whoever strikes the Editor's fancy. Newsletters are available to editors of other publications who wish to exchange samples of their labors. Articles, opinions, and general BS are solicited for publication by anyone who cares to write, and contributors will be rewarded with a complimentary copy of *Beaver Chatter*. Submissions can be sent to Vic Willson, P.O. Box 10026, College Station TX 77842 or emailed to lloydwill@aol.com

SMALL PACKET RATES JULY 1 1979 ONWARD

DATE	WEIGHT	SURFACE/AIR	RATE	DATE	WEIGHT	SURFACE/AIR	RATE
	grams				grams		
JY 1, 1979	<100	S	0.39	JY 1, 1989	<100	S	1.15
	100-250	S	0.66		100-250	S	2.10
	<20	A	0.27		<100	A	1.80
	20-50	A	0.45		100-250	A	3.30
	50-100	A	0.66		250-500	A	6.50
	100-250	A	0.67	JA 1, 1990	<100	S	1.20
JA 1, 1982	<100	S	1.22		100-250	S	2.20
	100-250	S	0.45		<100	A	1.90
	<20	A	0.72		100-250	A	3.45
	20-50	A	1.12		250-500	A	6.80
	50-100	A		JA 1, 1991	<100	S	1.25
	100-250	A			100-250	S	2.25
JA 15, 1983	<100	S	0.71		<100	A	1.95
	100-250	S	1.29		100-250	A	3.55
	<20	A	0.48		250-500	A	7.00
	20-50	A	0.76	JA 1, 1992	<100	S	1.30
	50-100	A	1.19		100-250	S	2.35
	100-250	A	2.27		<100	A	2.05
JU 24, 1885	<100	S	0.86		100-250	A	3.75
	100-250	S	1.56		250-500	A	7.35
	<20	A	0.51	JA 1, 1993	<100	S	1.35
	20-50	A	0.81		100-250	S	2.40
	50-100	A	1.45		<100	A	2.10
	100-250	A	2.90		100-250	A	3.85
AP 1, 1987	<100	S	0.93		250-500	A	7.60
	100-250	S	1.72	MR 1, 1994	<100	S	1.40
	<20	A	0.55		100-250	S	2.50
	20-50	A	0.87		<100	A	2.15
	50-100	A	1.55		100-250	A	4.00
	100-250	A	3.10		250-500	A	7.80
JA 1, 1988	<100	S	0.96	MR 1, 1994	<100	S	1.40
	100-250	S	1.77		100-250	S	2.50
	<20	A	0.57		<100	A	2.15
	20-50	A	0.90		100-250	A	4.00
	50-100	A	1.60		250-500	A	7.80
	100-250	A	3.20				

Beaver Chatter July 2022

DATE	WEIGHT	SURFACE/AIR	RATE	DATE	WEIGHT	SURFACE/AIR	RATE
	grams						
AU 1, 1995	<100	S	1.44	JA 1, 2006	<250	S	5.35
	100-250	S	2.60		250-500	S	7.20
	<100	A	2.20		<250	A	7.30
	100-250	A	4.10		250-500	A	14.05
	250-500	A	8.05	JA 1, 2007	<250	S	4.95
JA 1, 1999	<100	S	1.50		250-500	S	6.85
	100-250	S	2.75		<250	A	6.95
	<100	A	2.30		250-500	A	13.40
	100-250	A	4.35	JA 1, 2008	0 UP	S	5.65+
	250-500	A	8.50		0 UP	A	7.75+
AP 1, 2000	<100	S	1.50	JA 1, 2009	0 UP	S	5.86+
	100-250	S	2.75		0 UP	A	8.01+
	<100	A	2.30	JA 1, 2010	0 UP	S	6.13+
	100-250	A	4.35		0 UP	A	8.24+
	250-500	A	8.50	JA 1, 2011	0 UP	S	6.47+
JA 1, 2001	<100	S	1.75		0 UP	A	8.68+
	100-250	S	3.25	JA 1, 2012	0 UP	S	5.97+
	<100	A	2.50		0 UP	A	7.61+
	100-250	A	5.20	JY 1, 2012	0 UP	S	6.83+
	250-500	A	10.20		0 UP	A	8.88+
OC 1, 2002	<100	S	2.65	JA 1, 2013	0 UP	S	7.24+
	100-250	S	3.55		0 UP	A	9.54+
	<100	A	4.00	JA 1, 2014	0 UP	S	7.46+
	100-250	A	5.45		0 UP	A	9.37+
	250-500	A	10.65	JA 1, 2018	0 UP	S	8.77+
JA 1, 2004	<250	S	4.20		0 UP	A	9.76+
	250-500	S	6.25	JA 1, 2019	0 UP	S	9.03+
	<250	A	6.40		0 UP	A	9.96+
	250-500	A	12.20	JA 1, 2022	100	S	11.35
JA 1, 2005	<250	S	4.95		100	A	12.72
	250-500	S	6.85				
	<250	A	6.95				
	250-500	A	13.40				