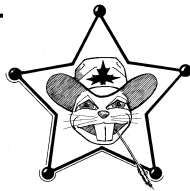


BEAVER



CHATTER

The Newsletter of the Prairie Beaver Regional Group of the British North America Philatelic Society, Ltd.
Chairman: **George Dresser** Treasurer: Editor: **Vic Willson**
Volume 46, No. 2 Whole Number 156 August 2021

Next Live Prairie Beaver Meeting on October 30

We will meet at our usual place at St. Mary's Catholic Center in College Station. The agenda will be sent later with a fall Beaver Chatter.

GHSS SEP 17-19

The Greater Houston Stamp Show will be at its usual location in the Humble Civic Center this year. Ron Strawser is chairman. Contact him at ghss@earthlink.net for more info or go to the website at

houstonstampclub.org/HoustonStampShow.html

You can find the exhibit entry form there as well as other information. Hope to see you there.

VIRTUAL BNAPEX

The BNAPEX show runs from 2-6 September. While free, registration is required to access the exhibits, seminars, and bourse.

BNAPS members and nonmembers log in at the REGISTRATION tab under BNAPEX on the BNAPS website bnaps.org. There is a separate link for members there.

While exhibit submission is still open, it appears the 160 frame limit is nearly filled, so get something in fast if you wish to exhibit.

Exhibits already submitted and accepted are available for viewing on a tab under the BNAPEX tab after registering. These are updated every week or so.

JOHN (JEFF) EDWARD FURLONG- 1942-2021

John (Jeff) Edward Furlong was born in New Rochelle, New York, on August 3, 1942, and died in Lakeway, Texas, on April 25, 2021. He attended public schools in Pelham, New York, and graduated from Princeton University in 1964 and later from Rice University in 1968 with a degree in architecture. He had a career of more than forty years with The Austin Company in Houston, Texas.

He is preceded in death by his parents Jill and John Furlong. He is survived by his wife Vicki and several brothers and sisters as well as several nieces and nephews.

Memorial contributions may be made to Star of Hope Mission, 4848 Loop Central Drive Suite 500, Houston, Texas 77081 or to Central Texas Food Bank, 6500 Metropolis Drive, Austin, Texas 78744.

Jeff was a member of the Prairie Beavers from 1993 onward. He served as Treasurer from 1995 until his death. We all will remember his dry sense of humor and good-naturedness, his pennants hung up at each meeting, and his stuffed beaver that also attended each meeting. Jeff's collections focused on historical material, especially WWI, imperfs and part perfs, and any odd thing he found interesting. We will greatly miss him,

THE CIRCULAR AND PRINTED MATTER RATES TO THE UK 1868-1879- Vic Willson

(This appeared in the April 2021 issue of Confederation, newsletter of the Large and Small Queen Study Group of BNAPS, slightly revised)

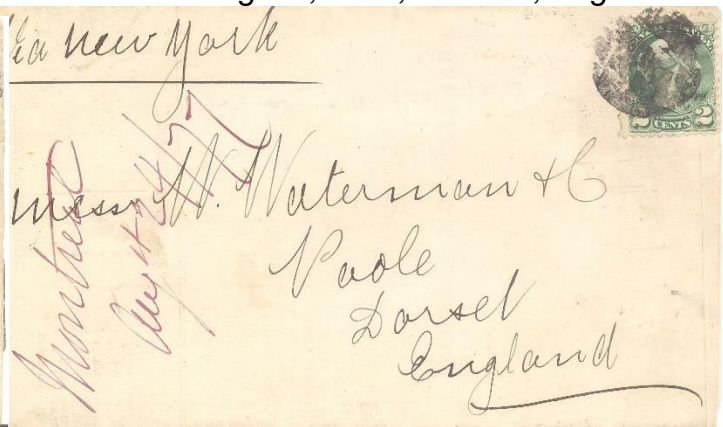
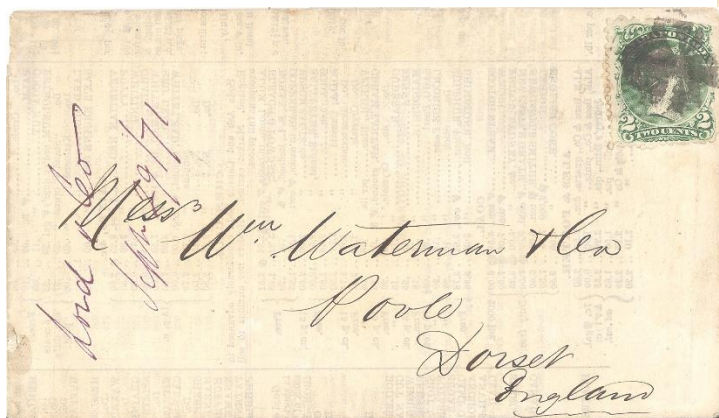
Circulars to the United Kingdom have an interesting history. On April 1, 1868, prices current were listed at 2¢ each, weight I assume being considered low. They were differentiated from printed circulars, which apparently could be other types of information and advertising and would have to go at bookpost rates, which were higher. In George Arfken's Canada's Small Queen Era- 1870-1897 he notes that prices current continued at the 2¢@ rate through 1875, regardless of weight. In 1876 they became part of the bookpost rate at 2¢ per oz. On Jan. 1, 1877 the rate changed again for all bookpost to 2¢ per 2. ozs. That rate remained in effect on Aug. 1, 1878, when Canada joined the UPU. It dropped to 1¢per 2 ozs. on Apr. 1, 1879. Thus, there are several short periods for circulars and printed circulars in the 11 year period 1868-1879, listed below in a table. Examples of two of the rates are shown below. I have not seen or recorded the 1876 or 1878-79 rates, and I request members send a note or pics of either for our benefit.

Table of Circular and Printed Circular rates to UK 1868-1879

Period	Prices Current Rate	Printed Circular Rate	Note
April 1, 1868 - Dec. 31, 1875	2¢@	2¢ per oz.	pre UPU
Jan. 1, 1876 – Dec. 31, 1876	not differentiated	2¢ per oz.	pre-UPU
Jan. 1, 1877 – July 31, 1878	."	2¢ per 2 ozs.	pre UPU
Aug. 1, 1878 – Mar. 31, 1879	"	2¢ per 2 ozs.	UPU
Apr. 1, 1879 – Sep. 30, 1879	."	1¢ per 2 ozs.	UPU

Fig. 1: Example of 2¢@ circular rate
Montreal Sep. 29, 1871, to Poole, England

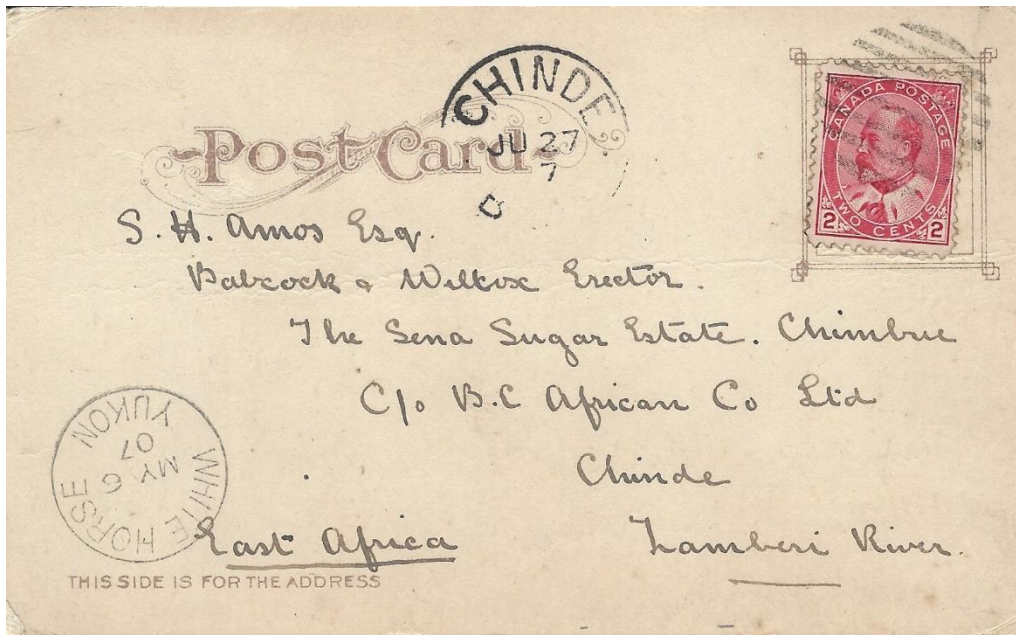
Fig. 2: Example of 2¢ per 2 ozs. 1877 rate
Montreal Aug. 27, 1877, to Poole, England



WHITE HORSE, YUKON, TO MOZAMBIQUE- George Dresser

Illustrated is a private postcard from White Horse, Yukon Territory, to Mozambique.

This postcard is of interest for its postal history, geography, company address, and picture.



Postal History

Posted: White Horse, Yukon, May 6, 1907

Received: Chinde

(Mozambique or Portuguese East Africa) June 27, 1907

Rate: 2¢ UPU postcard

Rarity: Postcards and covers to southern African countries are scarce, and Mozambique is rare. (The only mail from Canada to Mozambique during the Edward period I have seen.) This postcard was in the John Cooper exhibit entitled *King Edward VII Era Destinations From Canada*.

Geography

Chinde is on the Zambezi River. The Zambezi River drains a large portion of south-central Africa. Together with its tributaries, it forms the fourth largest river basin of the continent. The river flows eastward for about 2,200 miles from the Central African Plateau to empty into the Indian Ocean. With its tributaries, it drains an area of more than 500,000 square miles. The Zambezi means “Great River” in the language of the Tonga people. Victoria Falls, one of the world’s natural wonders, is along the river’s course. The Kariba and Cahora

Bassa, two of Africa’s most significant hydroelectric projects, are on the Zambezi River. Chinde is a port for the Zambezi Valley, an important fishing center; it exports and sugar. Today Chinde lies in Chinde District of Zambezia Province.

Victoria Falls



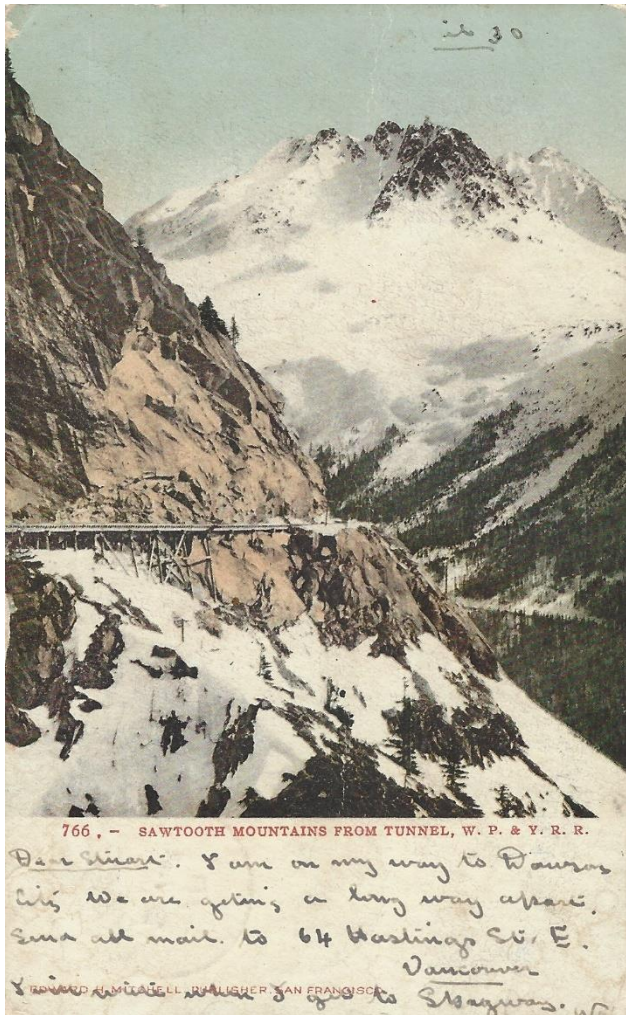
The Company

Sena Sugar Estates Ltd., a formerly British-owned company, granted a significant land concession from the Zambezia Company, had estates at Luabo and Marromeu in the Zambezi River delta,

and operated a sugar plantation near Chinde, a forestry concession, and a cattle ranch near Luabo. In the mid-1960s, it was the largest firm in Mozambique, with more than 10,000 employees. The company was centered in Sena and built sugar refineries nearby on the lower Zambezi River. Sugarcane is still processed there. The company was nationalized in 1978 after Mozambique’s independence, and the operations were turned over to

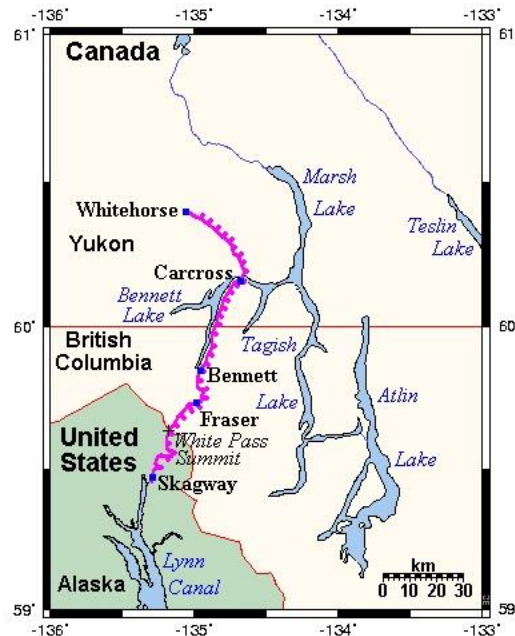
Cuban experts.

The Picture



Whitehorse. Building the narrow-gauge railway challenging engineering feat. It required extensive tunnels, and precarious bridging. At least 35 of the who worked on construction died working on the project. The track reached the summit of White Pass, on the Alaska-British Columbia border, in February 1899. The last spike was driven at Carcross, Yukon, on July 29, 1900. One crew laid tracks north from Skagway, and a second crew worked south from Whitehorse. The gold rush had ended by the time construction finished. Demand for the railway's service dropped as many prospectors left the area. The line struggled along in the early 20th century, carrying passengers and freight. During WW II, the line played a crucial role in transporting supplies for the construction of the Alaska Highway.

The picture side of the card shows the Sawtooth Mountains from the White Pass and Yukon Route railway tunnel; the route connected White Horse, Yukon, with Skagway, Alaska. The railway met the demand for transportation to the goldfields of the Yukon River basin during the Klondike Gold Rush. Completed in 1900, it was a feat of engineering and one of the steepest railways in North America. It ran 177 kilometers from Skagway, Alaska, to White Horse, Yukon. Today the White Pass and Yukon Route is a Canadian and U.S. Class III 3-foot narrow-gauge railroad, an isolated system with no direct connection to any other railroad.



Map of the W. P. & Y. R. R.

Work began in 1898, at the height of the Klondike Gold Rush, to provide transportation from Skagway, on Alaska's Pacific coast, to was a blasting, 35,000 men



This picture is a streetscape scene of White Horse in 1900.

The picture below left is of the White Horse post office and government building The White Horse post office opened on June 1, 1900. White Horse became Whitehorse in 1957.

Below right is a view of the city in 1910.



So, this is why stamp collecting is fun; one postcard, a lot of history.



HALIFAX TO SIERRA LEONE- George Dresser

A rare destination for Canadian mail, only two earlier items have been seen that I (*Ed.*) know of, a cover of 1895 on ebay sent to Bill Radcliffe that never arrived from overseas to him, now location unknown, and a postcard sent in 1899 recently sold by Sparks Auction. I managed to miss it by thinking it was the next day.



ANOTHER 1882 HALF CENT COVER- Vic Willson

I got this recently on ebay, no other bids, probably not recognized as early. Halifax 2/Dec 23/82 to Moncton, no receiver, not sealed. Ted Nixon reported the July 24 cover, and Guillaume Vadeboncoeur has one dated Oct. 23. Anyone else have an 1882 dated cover?

SPECIAL DELIVERY PAID WITH MAP STAMPS, SHORTPAID LETTER- Vic Willson

The cover below was obtained by me in the last Sparks auction. The franking of five Map stamps paid for the 10¢ special delivery fee in 1899. It was put aboard the Harrisburg & Southampton Mail Coach to Toronto. The letter rate of 2¢ was not paid, thus the 4 representing 4¢ due on receipt. Regulations stated that if registration or special delivery was paid the letter could be forwarded with postage due if shortpaid for the letter rate. If insufficient postage was affixed, the letter was returned for additional postage. While the Post Office stated that it was desirable that the new 10¢ SD stamp was to be used, ordinary stamps could be used to pay the fee.



This cover was in the Winmill collection and shown on p. 22 of *The Evolution of Imperial Penny Postage and the Postal History of the Canadian 1898 Map Stamp* (Hennok, 1982, Toronto). I have not recorded its being sold or auctioned since Winmill's auction in the 1980s.

Beaver Chatter is the unofficial newsletter of a bunch of BNAPS members who, through no fault of their own, happen to live in the state of Texas. Opinions expressed are those of the authors who like to put their thoughts, philatelically or otherwise, into writing. Unless noted, articles are the effort of the Editor. Distribution is free to BNAPS members in the area who find it worth their while to participate in the group's activities, to certain BNAPS officials, and to whoever strikes the Editor's fancy. Newsletters are available to editors of other publications who wish to exchange samples of their labors. Articles, opinions, and general BS are solicited for publication by anyone who cares to write, and contributors will be rewarded with a complimentary copy of *Beaver Chatter*. Submissions can be sent to Vic Willson, P.O. Box 10026, College Station TX 77842 or emailed to lloydwill@aol.com or v-willson@tamu.edu