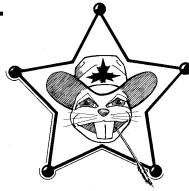


BEAVER



CHATTER

The Newsletter of the Prairie Beaver Regional Group of the British North America Philatelic Society, Ltd.
Chairman: **George Dresser** Treasurer: **John Furlong** Editor: **Vic Willson**
Volume 41, No. 2 Whole Number 147 December 2016

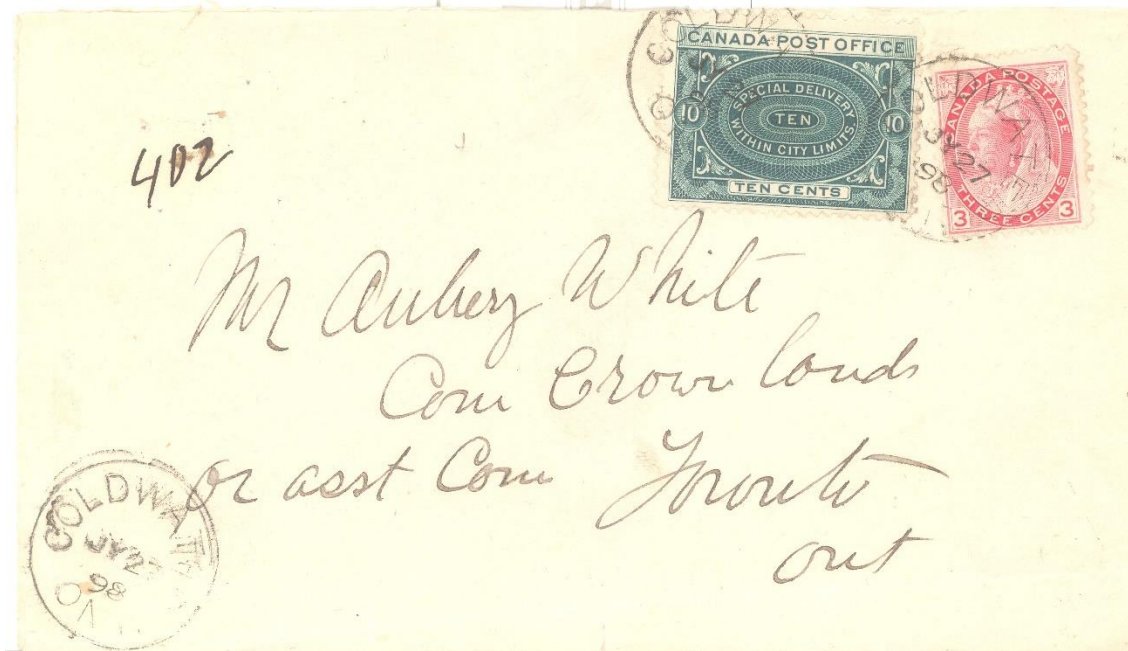
December 17 MEETING IN COLLEGE STATION

We will meet at the St. Mary's Catholic Center, Church Avenue, College Station, Texas 77840, meeting wing on the second floor, probably Room 207, but it should be easy to find. Map p.2

BNAPEX 2017 FREDERICTON

The 2017 annual BNAPS meeting took place September 30 to October 2 in Fredericton, New Brunswick. While intended to coincide with the peak color change for fall, the unusually dry and warm weather delayed it throughout the Northeast for a couple weeks this year. Nevertheless there was sufficient display to enjoy, Both the Dressers and Willsons attended, in part as President and Board Chairman respectively. Vic leaves the Board this year and George stays on as Past President.

George showed two one frame exhibits, one noncompetitive and invited, the other competitive. He gave attendees a nice showing of Fredericton fair and exhibition covers dating from the 1890s for the first. The second was a traditional exhibit of Canada's first special delivery stamp, issued in late June 1898. This included two of the four recorded color variety large die proofs (the judges noted he is missing the one in orange, to his chagrin, also at least one in sepia). In addition to plate layout and color variations, George showed early uses of the stamp. Below is one George wants from me, used in July 1898. He received a gold award. (*continued on p. 3*).

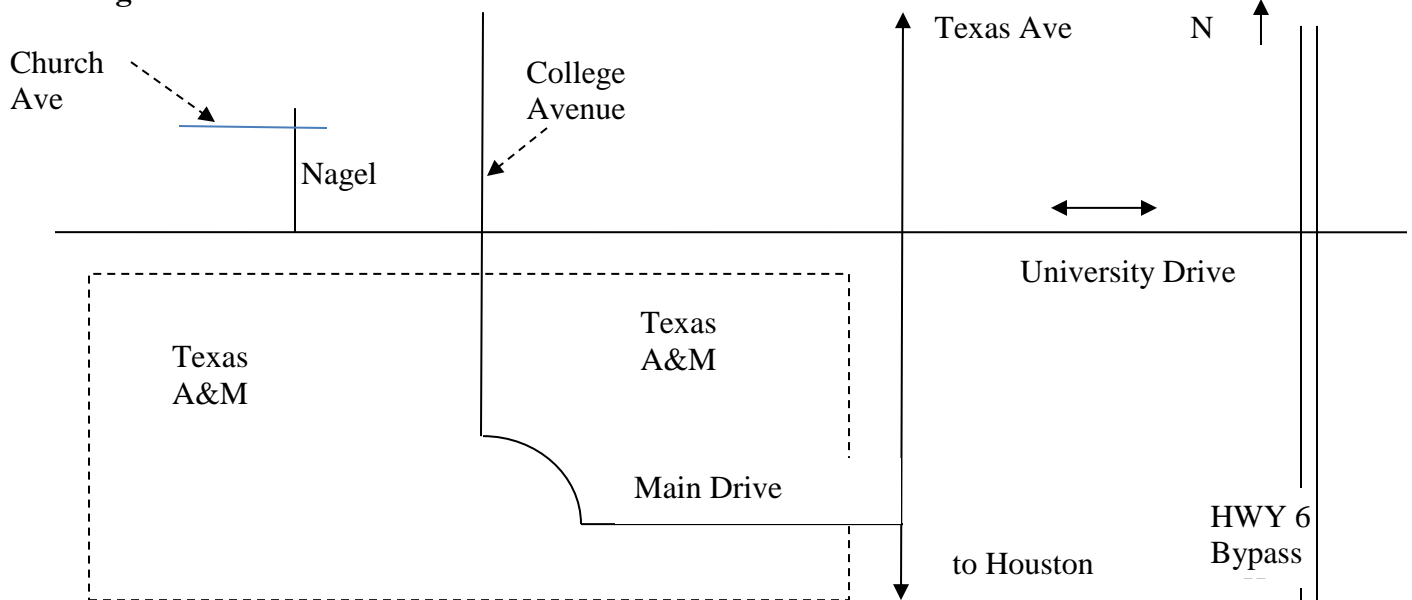


PRAIRIE BEAVER MEETING, December 17, 2016

SCHEDULE OF ACTIVITIES

8:45 - 9:00	Coffee, donuts, informal
9:00 - 9:15	Introductions
9:15 - 9:45	Book reviews- new BNAPS books, auctions
9:45 - 10:15	Swap, Sell, Swap
10:15 - 11:00	Presentation: Cunard Line: The Ships and the Atlantic Mail 1840-1867, the Monopoly Years: Eigel Trondsen
11:15 - 12:00	Clothesline Exhibit
12:00 - 1:00	Lunch
1:00 - 1:15	Business meeting
1:15 - 2:00	Presentation: One-cent Jefferson of the U.S. Prominent Americans Issue: Jeff Switt
2:00 - 2:45	Swap, Sell, Buy, Trade
2:45 - 3:15	Presentation: Presentation: Canada Special Delivery E1: George Dresser
3:15 - 4:00	Swap, sell, buy, trade
4:00 - 4:30	Wrapup
4:30	Leave for dinner at local venue

Map of College Station north side of TAMU



(continued from p.1)

Vic Willson showed a one-frame of the 15¢ Large Queen stamp in traditional format. This was a revision of his exhibit at Baltimore in 2014 with a number of significant additions, including the to-date only recorded example of ribbed paper, shown below from a scan made at the V G Greene foundation as part of the certificate. Also new was one of the largest recorded multiples of the stamp, A gold was awarded again.



Two Large Queen Covers with Plate Flaws

Vic Willson

At the recent BNAPEX in Fredericton I spotted and bought a 12½¢ Large Queen cover with the position 52 flaw, a small circle between the P and O of postage. The cover and stamp are shown below.



I have not previously seen this flaw on cover, although it may be on the cover lot 504 of the Large Queen Brigham auction, the picture is not clear enough on the catalog or the pdf to verify that. It may also be on the left stamp of the pair on lot 507 It is not listed in Unitrade although it is as prominent and recognizable as the

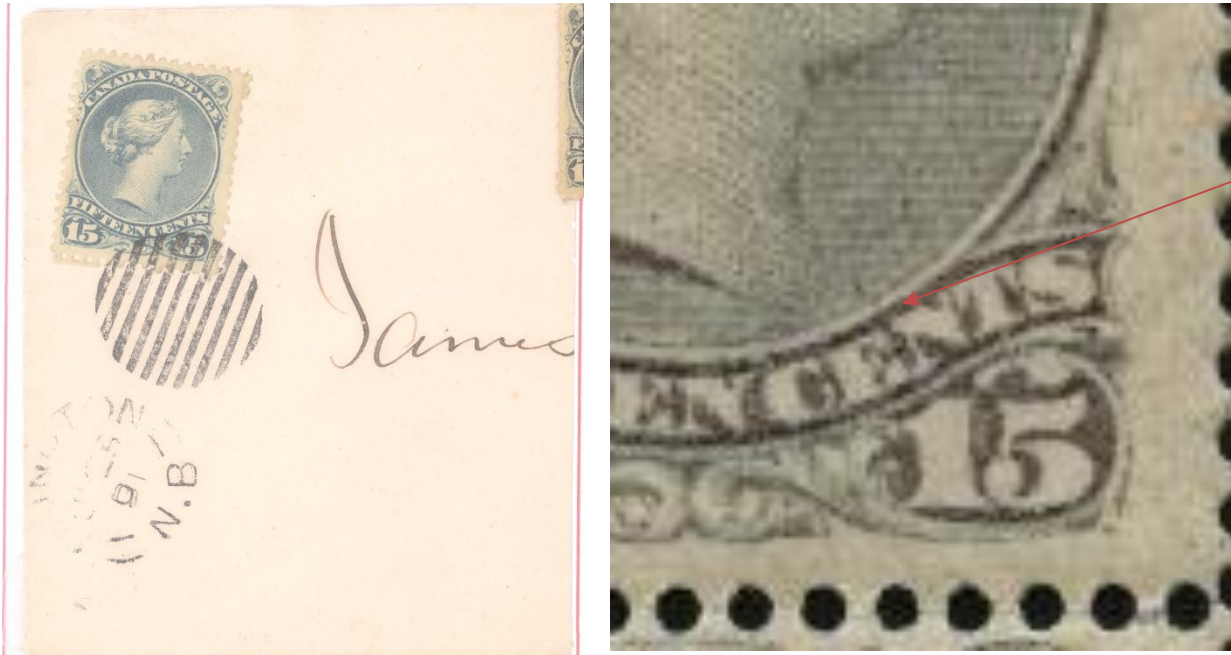
missing frame lines left and right around the value tablets. A blowup of the stamp is shown below so the flaw is easily seen.



It was plated with a strip of three I purchased from a Longley auction some time ago with the plate flaws in positions 52, 53 (dot in lower right margin), and 54, flaw in the A of HALF. That is also shown here.



The other cover shows the cracked plate flaw in position 81 of the 15¢ Large Queen. In Fred Fawn's exhibit book his sheet of the stamp has arrows indicating the location of a flaw at that position, but I had not previously seen what it looked like (at NY2016 I stupidly forgot to see his Large Queen exhibit). I recently purchased a lower left 2 x 3 block of six specifically to get the flaw (and the flaw at 91, which Fawn also indicated). Once I saw what it looks like, shown in a figure here, I went through my 15¢ covers, and sure enough, I found it on the cover illustrated here. The cover itself is probably a philatelic concoction as it pays a 5 times letter rate or a 15 times drop letter rate for Moncton in 1891. The cancel is genuine and a remarkably perfect strike, but I have examples on post cards just as clear and complete. In any case, this plate flaw is harder to see on scans from auction catalogs. It is listed in the latest Unitrade.



Moncton JY 25, 1891 5x rate

One question about the flaw in position 81- I have located a number of these in my stock and viewing items on ebay (yes they can be found), and all are from the greyish stamps of the mid-1870s or blue/blue grey and later. I wonder if the crack occurred after the first printings. Perhaps a reader can show the flaw on an early printing to disprove this.

PS since writing this I also found it, not described, on a thick paper deep violet shade, which may be a major rarity.