

NEWFOUNDLAND PLATE NUMBERS 1897-1947

A comprehensive study of the postage stamp issues that features those values having printing plates displaying a numeral engraved into the outer edge of the printing plate. Demonstrated throughout is **original research and discovery.**

These numerals, or plate numbers, initially appeared on ½¢, 1¢, 3¢ values in the 1897 Royal Family issue. The next issue found with plate numbers is the 1919 Caribou issue, with the 1¢, 2¢, 3¢ values having multiple plates made. In the 1923 Pictorial issue only the 3¢ value has a plate number. The 1929 and 1931 Publicity issues present plate numbers on the 2¢ and 3¢ values.

The 1932 Resources issue presents a multiplicity of plate numbers. In this issue many new discoveries are shown. The plates are found on the 1¢ to 5¢ values. The 2¢, 3¢, 4¢ denominations of the 1938 Royal Family as well the 1941 Sir Wilfred Grenfell issues have plate numbers. With the 1942-49 Resources issue the denominations 1¢ to 48¢ except the 7¢ will be found with multiple plate numbers. Much new research is presented concerning the plate formats found. This is followed by the 1943 Memorial College, 1943 Air Mail, 1946 Provisional, 1947 Princess Elizabeth issues with the 1947 John Cabot issue offering new findings.



ISSUES PRESENTING ORIGINAL RESEARCH and DISCOVERY FINDINGS

1897 Royal Family	a	b			
1919 Caribou	a				
1923 Pictorial		b	d	f	
1929 Publicity	a	c	e	f	
1932 Resources		b	c	d	e
1938 Royal Family					f
1942-49 Resources			c	d	e
1947 Princess Elizabeth					f
1947 John Cabot				d	e

Study areas of the research criteria:

- a: unreported plate numbers
- b: evidence contradicting the reported printing plate size
- c: undetermined and unknown multiple perforation sizes (S.G. Instanta Gauge 9.8-18.2 used)
- d: different plate format styles utilizing same plate number
- e: plate numbers found on printing errors
- f: usage

denotes original research and items of importance

Bibliography:

Prior research by Winthrop S. Boggs "The Postage Stamps and Postal History of Newfoundland", 1942; Robson Lowe "The Encyclopaedia of British Empire Postage Stamps, Volume V, North America", 1973 and John Ayshford "The Last Stamps of Newfoundland", 1978.

'Newfoundland Plate Numbers' articles by John M. Walsh appeared in British North America Philatelic Society journal *BNA Topics* from 1987-93. Much controversy and discussion generated. (www.bnatopics.org) Vol. 44 No. 5 Sept-Oct 1987 pg 18-20; Vol. 44 No. 6 Nov-Dec 1987 pg 26-28; Vol. 45 No. 1 Jan-Feb 1988 pg 25-27; Vol. 46 No. 1 Jan-Feb 1989 pg 9; Vol. 46 No. 5 Sept-Oct 1989 pg 7; Vol. 46 No. 6 Nov-Dec 1989 pg 6; Vol. 47 No. 3 May-June 1990 pg 8-9; Vol. 48 No. 3 May-June 1991 pg 22-23; Vol. 50 No. 4 July-Aug 1993 pg 12-13. Research has been updated in award winning "Newfoundland Specialized Stamp Catalogue", now in 6th edition, 2006 authored by John M. Walsh and John G. Butt.

Considering the quantity of sheets produced having plate numbers attached to them, a market search will show very few plate number formats left remaining. Where used, M represents in thousands the number of sheets produced that would have had plate numbers. **Presence of plate numbers on covers is quite very noticeable by their absence; usage practically non-existent.**

Prior to 1897 the names of the printing companies appeared on sheet margins; called an imprint inscription. Example styles as prepared by the four printers who used them are shown.



Due to quantities and frequency of some of stamp orders, the created printing plates couldn't withstand the pressure of use. Multiple plates of some of these stamp designs were made to help overcome this problem. Numbering would identify the plate presently being used.

ROYAL FAMILY ISSUE OF 1897

The first issue of Newfoundland to show the appearance of plate numbers. This issue was printed by the American Bank Note Co., New York. The ½¢ value shows printing plate number 2 reversed.



original discovery

One of two found in ABN Co archives

Literature does not record plate numbers for ½¢ value

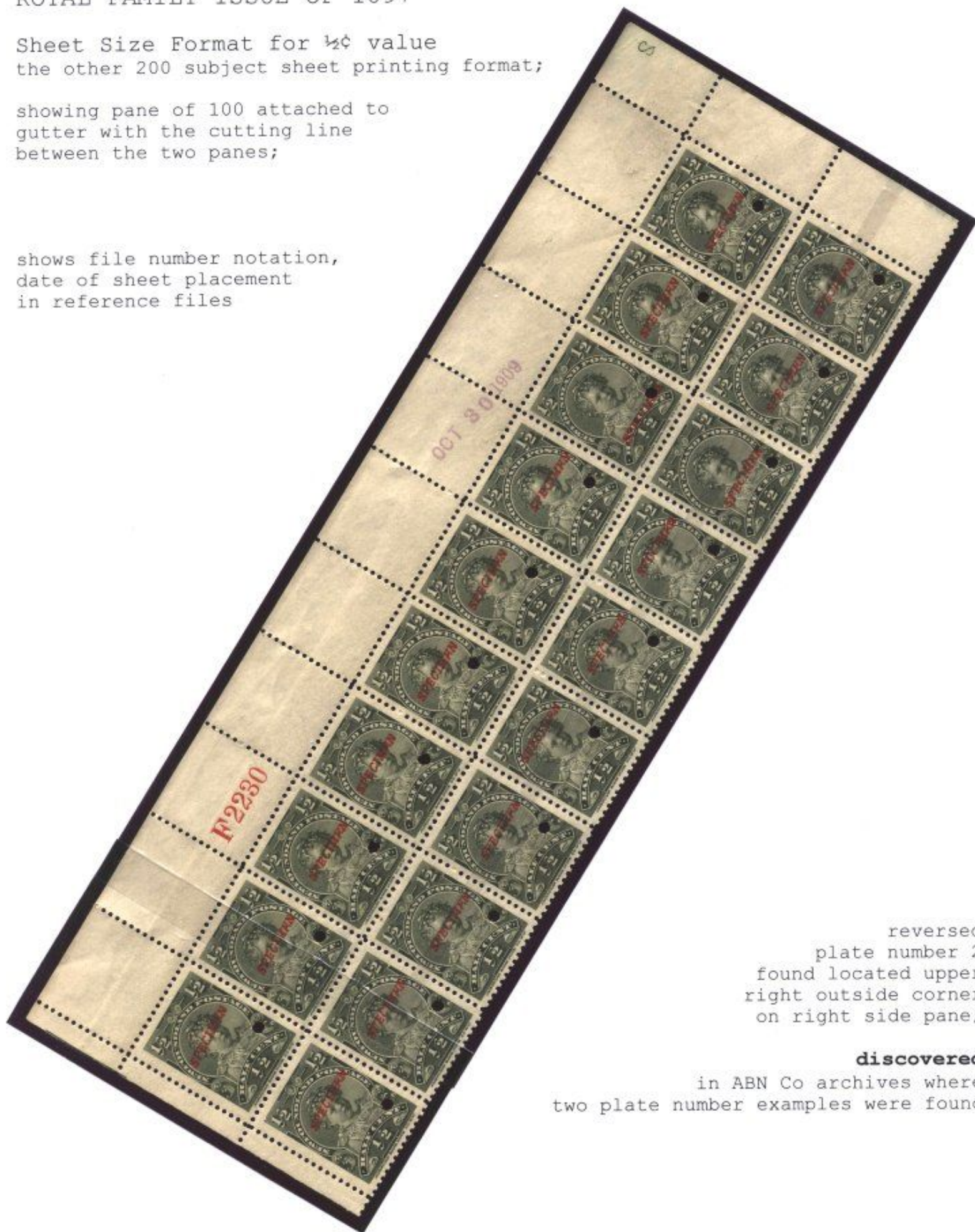
To date field stock of the ½¢ value has not been seen with a plate number

ROYAL FAMILY ISSUE OF 1897

Sheet Size Format for $\frac{1}{2}$ ¢ value
the other 200 subject sheet printing format;

showing pane of 100 attached to
gutter with the cutting line
between the two panes;

shows file number notation,
date of sheet placement
in reference files



reversed
plate number 2
found located upper
right outside corner
on right side pane;

discovered
in ABN Co archives where
two plate number examples were found

ROYAL FAMILY ISSUE OF 1897

1¢ green value

found in ABN Co archives were three examples of plate number 2 reversed;

this is from the 200 subject sheet made without gutter separation as indicated by the presence of the cutting arrow in the left corner;

shows date of sheet placement in reference files and the magenta coloured three line box notation 'RETURN TO ISSUE ROOM To be held for reference'



field stock showing

plate number 2 reversed
found in upper right corner



original discovery

literature states 'no plate numbers' for the 1¢ value

ROYAL FAMILY ISSUE OF 1897

1¢ green value

found in ABN Co archives were three examples of plate number 3 reversed;

the other 200 subject sheet printing format style; there were two panes of 100 attached to a gutter as shown; displays file number and date of sheet placement in reference files



field stock showing

plate number 3 reversed
found in upper right corner



original discovery

literature states 'no plate numbers' for the 1¢ value

ROYAL FAMILY ISSUE OF 1897

Plate styles originating from the 100 subject printing plate format

3¢ value initially found on printing plate style having 100 subjects on the plate

Field Stock

shows plate 3 reversed in upper left corner



Plate styles originating from the 200 subject printing plate format

3¢ value was also printed in sheets of 200 subjects; similar as the ½¢ and the 1¢ green values. **This discovered fact, contrary to reference books,** was proven by finding two specimen sheets in the ABN Co archives. They showed:

- a vertical 14 millimetre gutter between the two panes of 100
- marginal top and bottom cutting guide lines in middle of the gutter
- two different styled plate numbers
 - F-5610 in the upper right corner of left pane
 - F-5610 in the upper right corner of right pane with a reversed numeral 4 located 14 millimetres out in the right margin.

original discovery one of two from the ABN Co archives



Field
Stock

plate
F-5610;

plate
F5610 +
reversed
numeral 4
14 mm in
right
margin

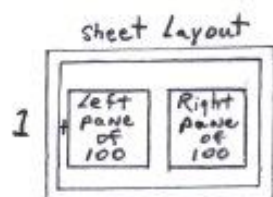


CARIBOU ISSUE OF 1919

The Caribou issue is the next issue found to have plate numbers.
This issue was printed by Whitehead, Morris & Co., Ltd., London.
Only the 1¢, 2¢ and 3¢ values are found with plate numbers being employed.

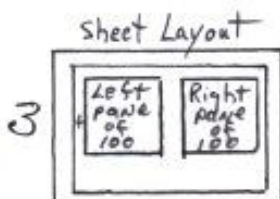
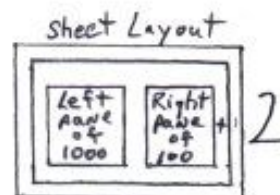
The 1¢ value was printed in sheets of 200 subjects containing two panes of 100.
Of the 1¢ value there was printed and issued a total of 39.05 M sheets.
This was done by utilizing three plates; these being numbered 1, 2, 3.

Plate number 1 is found located in the left outside margin of the left pane;
Plate number 2 is found located in the right outside margin of the right pane;
Plate number 3 is found located in the left outside margin of the left pane.



original discovery

contradicts literature
which states
"plate 1 does not exist"



CARIBOU ISSUE OF 1919

The 2¢, 3¢ values printed in sheets of 200 subjects having two panes of 100. Of the 2¢ value there was printed and issued a total of 38.745 M sheets. To print the order for the 3¢ value there was needed a total of 59.18 M sheets. This was also done by the utilization of three plates; numbered 1, 2, 3.

Sheet size and layout of plate number locations is same as for the 1¢ value.



PICTORIAL ISSUE OF 1923

This issue was printed by Whitehead, Morris & Co., Ltd., London.
Only the 3¢ value is found issued with a plate number; which is number 2.
It is found in the lower left corner with a cutting line beneath it.

A cover, paying the 3¢ inland letter rate, is shown having the top left corner stamp with plate 2. However, it is found having a cutting line above the stamp.

For this to occur an incorrect separation of two panes had to have happened; caused by cutting above the numeral instead of cutting along line beneath it. This would suggest that there were two panes of 100 printed on the same sheet.

This is contrary to what has been reported in the literature.

Thus, from the presented information; the stated quantity printed suggests that 90 M sheets were printed.



original discovery

PUBLICITY ISSUE OF 1929

This Publicity issue was printed by a new company. The John Dickinson & Co., London won printing contract over previous printer, Whitehead, Morris & Co Ltd. In this issue only the 2¢ and 3¢ values are found with plate numbers.

The 2¢ value was printed utilizing several printing plates. They were numbered 2 and 3 and are found in lower left sheet corner.

Three **discovery** perforation sizes are respectively shown for plate 2.

An imperforate along with two perforations sizes are shown for plate 3.



13.8 x 13.5



unrecorded imperforate



13.8 x 13.8



13.8 x 13.5



14.2 x 14.2



13.8 x 13.8

PUBLICITY ISSUE OF 1929

The 3¢ value is other stamp in this issue found with plates; numbers 2 and 3.

Plate number 2 is found located in the lower left sheet corner.

Plate number 3 is found located in the upper right sheet corner.



13.8 x 13.8



13.8 x 13.5



13.8 x 13.8

*horizontal imperforated
bottom sheet margin error*

*this error showing the
plate number is not
recorded in the literature*



13.5 x 13.8



13.8 x 13.8

PUBLICITY ISSUE OF 1931

Again John Dickinson & Co., London was the printer. The stamp subjects are the same. However, the issue is different from the previous issue in that the stamp paper now has embedded into itself a watermark feature consisting of the Coat of Arms of the Newfoundland government. This was done to give more heightened security from unauthorized uses.

Both the 2¢ and 3¢ values are found with plate numbers.

2¢ value has plate 2
located in the lower
left sheet corner



3¢ value is found
with plate 3 located
in the upper right
sheet corner



perforation 13.8 x 13.8 is found on both values

RESOURCES ISSUE OF 1932

The Resources issue was printed by Perkins, Bacon & Co., London.
The values 1¢ to 5¢ were printed as sheets of 400 subjects having four panes of 100 separated by a 46 millimetre gutter.

This **original discovery research** is contrary to the literature. It was observed from manner perforations crossed the selvedge and by the finding of a printing sheet showing embedded watermark layout.

It was discovered that **two styles** of the same plate number exist:

- a) **there is an outside plate number** located in upper left or upper right corner
- b) **there is an inside plate number** located in upper left or upper right corner

Plate numbers are found only on 1¢ to 5¢ values. Basic 13.5 x 13.5 perforation.



1¢ green value was issued with plate numbers 1 and 2

THE RESOURCES ISSUE OF 1932

The 1¢ gray value was issued with plates numbered 1 to 6.

Plate 1 has its plate proof and its perforated form shown.

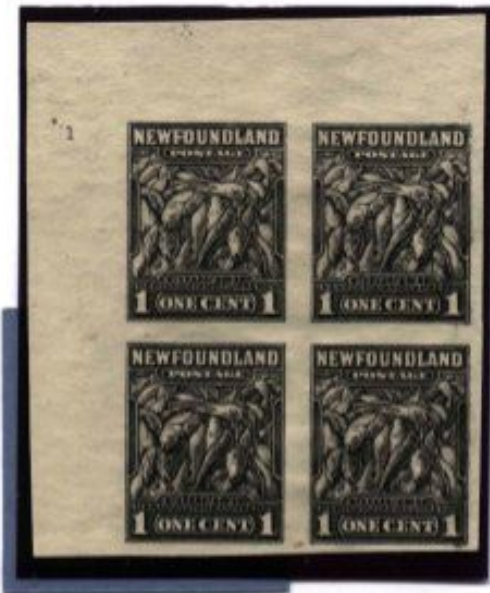


Plate 2 on the plate proof and
both perforated outside and inside plate styles shown

these plate proofs having plate numbers are unrecorded

RESOURCES ISSUE OF 1932

The 1¢ gray value with plate number 3.



infrequent usage of the 1¢ with plate 3 outside style;
paying the United States letter rate



Plate number 4 is shown in both imperforated and perforated forms

RESOURCES ISSUE OF 1932

Imperforate plate proof with plate 5 found printed on blue and red moire paper.
plate numbers on this paper type are unrecorded



Inside and outside styles of the perforated plate 5 are shown.



seldom observed
usage of the 1¢
with plate 5
inside style;
paying the inland
unsealed circular
letter rate



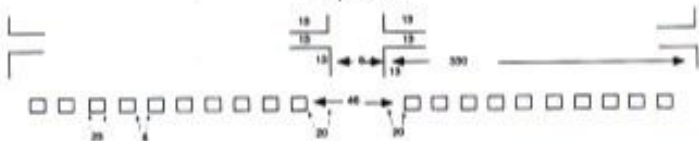
RESOURCES ISSUE OF 1932

The 1¢ gray value with plate 6. It has half of the wide 46 millimetre gutter showing the perforations on inside left margin indicating were the other pane was attached. The 5¢ value also displays the same features.

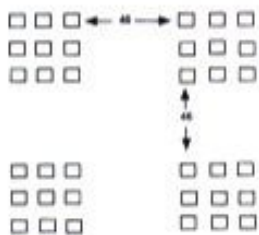
In conjunction is center section taken from sheet format being used in 1932.

Cross gutter format for 400 subject sheet as per imbedded watermarks

original
discovery
proof for
400 subject
plate



Measurements are in millimeters except as noted

☐ Overlay watermark

Centre piece of street
showing cross gutter formed.



22 JUL 1952

Sheet from nest making
cut $22\frac{1}{2} \times 26\frac{5}{8}$.

Top sheet margin strip displays date, sheet size, and as well, shows double row watermarks from above same sheet.

RESOURCES ISSUE OF 1932

Reversed plate numbers 1,2 and 3, are found on 2¢ rose value.



RESOURCES ISSUE OF 1932

The 2¢ green value, Die I, determined by a scar on King's face and a dot in O of TWO, was issued with reversed plate numbers 1, 2 and 3.

Plate 1 imperforated and both the outside and inside perforated plate numbers.



RESOURCES ISSUE OF 1932

The 2¢ green value, Die I, showing both styles of plate number 2 reversed.



both horizontal and vertical
are perforations doubled



Both styles of plate number 3 reversed.



unrecorded imperforated plate 3

RESOURCES ISSUE OF 1932

2¢ green, Die II value; the scar on face and dot in O of TWO have been removed. It is found having plate numbers 2 and 4. The plate number is normal.

2¢ plate proof in violet trial colour is found with plate number 2

*plate number 2 on
the plate proof
mauve colour trial
is unrecorded*



issued stamp with plate number 2

RESOURCES ISSUE OF 1932

The 2¢ green value, Die II , with plate number 4.

The imperforate plate proof and both perforated plate styles are featured.



unreported
mirror image



vertically imperforate
between error with
unreported perforation
14.2 x 14.2

original discoveries

RESOURCES ISSUE OF 1932

The 3¢ value issued with plate number 1 reversed, and plate numbers 2 and 3.



RESOURCES ISSUE OF 1932

The 4¢ value was printed and issued in two colours; deep violet and rose lake.

The 4¢ deep violet value was printed without any plate number.

However the 4¢ rose lake value was printed using plate numbers 2 reversed and plate 3; and plate, number 4; created but not used.

4¢ value showing plate number 2 reversed.

*Black plate proof with
plate number 2 reversed
unrecorded in literature*



Perforated version

*unrecorded plate proof
with plate number 2 reversed*



original discovery

*unrecorded
13.9 x 13.9 perforation*



RESOURCES ISSUE OF 1932

The 4¢ red value, plate 2 reversed.

Shown is unrecorded perforation size and perforation error associated with it.



unrecorded in the literature
is 14.3 x 14.3 perforation

original discovery



horizontally imperforate error
with 14.3 x 14.3 perforation

Plate number 3 of the 4¢ red value showing, in first instance, the hairline cracks on the plate which led, in second instance, to cracked printing plate.

Hairline cracks
fine lines appearing
in the left margin

Cracked plate
shows obstructive line
through design above left cap



unrecorded
plate proof of
unissued plate 4



Plate 3 developed stress fractures making it unuseable for further printing. Plate 4 was made, however, no orders were processed.

RESOURCES ISSUE OF 1932

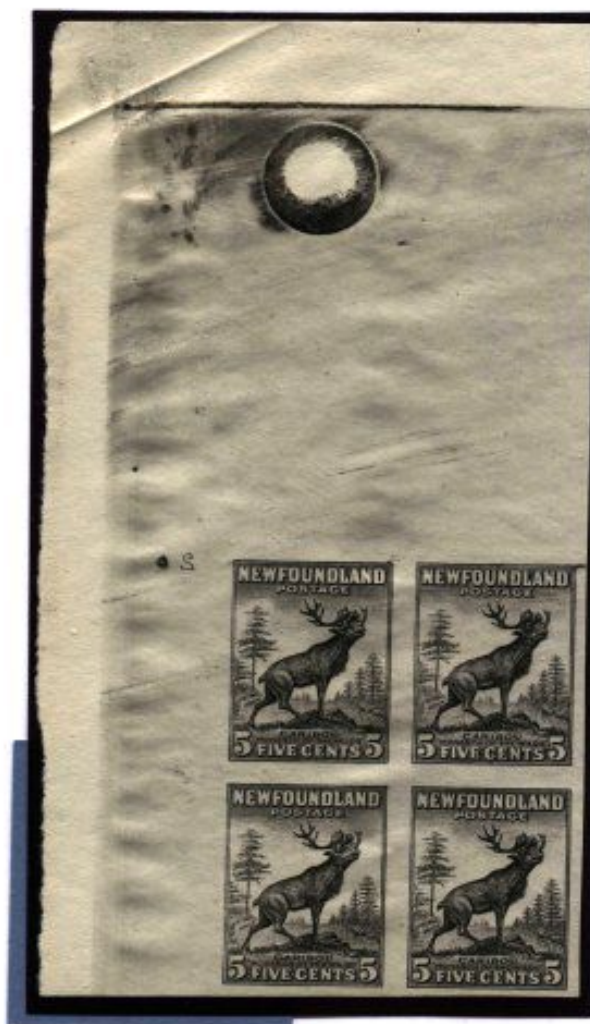
5¢ value, Die I, which demonstrates an even antler under T of POSTAGE, has no record of plate numbers being utilized.

But 5¢ value, Die II, having higher antler under T of POSTAGE, was created and has plate numbers 2 reversed and numbers 3 - 7.

5¢ value, Die II showing plate number 2 reversed.

*Black plate proof with
plate number 2 reversed*

*unrecorded in
the literature*



RESOURCES ISSUE OF 1932

5¢ value, Die II, plate number 2 reversed.

Plate proof with plate number 2 reversed

only plate proof sheet found
on **thin paper** marked in mauve ink;
Plate Ptrs 7 March 1939



both perforated styles of plate 2 reversed



The imperforated plate number 3 with its perforated version.



RESOURCES ISSUE OF 1932

5¢ value with plate number 4.

Plate proof in colour of issue

Proof printed on blue moire paper



this plate proof having a plate number is unrecorded in literature



field stock

RESOURCES ISSUE OF 1932

5¢ value showing plate number 5 on the plate proof and on the perforated style.

*the literature makes no mention
of plate number on this plate proof*



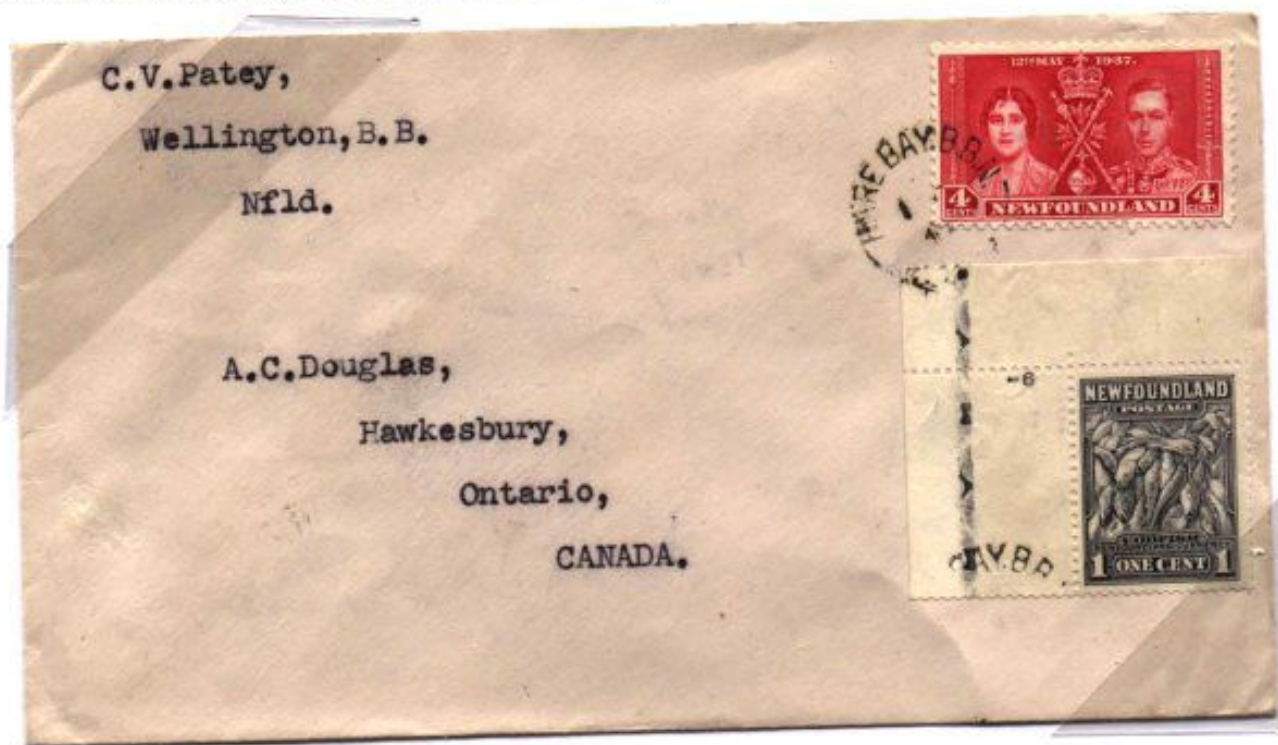
Plate number 6



Plate number 7

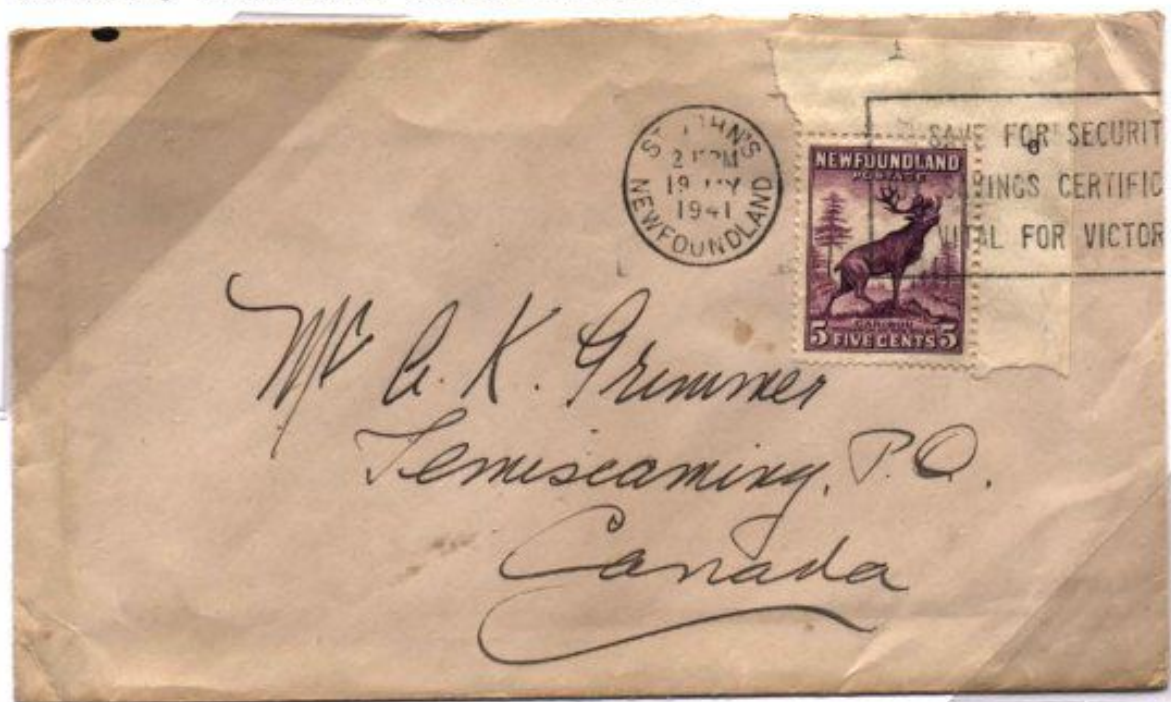
RESOURCES ISSUE OF 1932

1¢ value showing usage with presence of plate number 6.



seldom observed usage of the 1¢ with plate 6 inside style;
shown paying the 1941 Canada letter rate

5¢ value featuring usage with plate number 6.



infrequent usage displaying plate number 6
shown paying the 5¢ basic Canada rate

ROYAL FAMILY ISSUE OF 1938

Printed by John Dickinson & Co., Ltd., London and issued in sheets of 100.
The perforation 13.5 x 13.5 is standard for this issue.

The 2¢ value has plate 2 in the upper right sheet corner.



The 4¢ value has plate 2 in the upper left sheet corner.



Combination usage of plate numbers from 1932 and 1938 issues; infrequent usage shown on a United States double weight letter rate. This was determined by noting presence of 3¢ postage due value; this being the charge for the extra weight. Double deficiency was not charged on armed forces mail.

ROYAL FAMILY ISSUE OF 1938

The 3¢ value has plate 2 in the upper right sheet corner.

plate number 2 found on the 3¢ value utilized to pay the 3¢ revenue charge on cheques written for less than \$100



with the rare occurrence of usage,
the position of this plate number
was verified by finding the same
stamp with lower right corner
utilized on similar document

ROYAL FAMILY ISSUE OF 1938

Printed by John Dickinson & Co., Ltd., London and issued in sheets of 100.
The perforation 13.5 x 13.5 is standard for this issue.

The 4¢ value was issued with plate 2 in the upper left sheet corner.

The literature makes no mention of these plate proofs having a plate

Plate Proof with full lathework
showing intense colour of issue



Plate Proof with some lathework
showing colour of issue



Plate Proof printed on blue moire paper
unrecorded in the literature



field stock

SIR WILFRED GRENFELL ISSUE OF 1941

This issue was printed by the Canadian Bank Note Co., Ottawa in sheets of 200 subjects containing two panes of 100. New style of plate number designation for Newfoundland stamps was introduced. This style had plate numbers appearing in the four outside corners of the 200 subject plate, as well, there is located a control number in the lower left corner.



Usage of a
plate block
to pay the
19¢ charge
on the Canada
registered
airmail
letter rate



RESOURCES ISSUE OF 1942 - 49

This Second Resources issue was printed by Waterlow and Sons, Ltd., London. The basic perforation is 12.5 x 12.5 for this issue. The designation M where utilized denotes per thousand for sheet quantity printed.

Original research and discovery showed following three perforations were also utilized: 12.5 x 12.8 12.8 x 12.8 12.8 x 12.5

as well, the same research and discovery showed there were five distinct printing plate styles made to produce this issue.

Items noted as from the **'printers archives are often one of a kind'**.

Original research found that:

FIRST PRINTING STYLE

- a) was printed and issued in sheets of 100 subjects
- b) has the plate number located either in the left center margin opposite position 51 or in the top center margin above position 5.

'...it is found with FIRST PRINTING style that the sheet margins were cut close resulting in loss of the plate number from most of these issued stamp sheets.'

PLATE PROOF
in colour of issue

Plate 41711

imperforate 1¢ gray value
from the printers archives



Plate 41711

original discovery

imperforate error



RESOURCES ISSUE OF 1942 - 49

FIRST PRINTING STYLE

Plate 41711

1¢ gray with left center

50.5 M issued



RESOURCES ISSUE OF 1942 - 49

FIRST PRINTING STYLE

Sheet layout shows printing plate style found in margin center and four corners

42430



Plate 42430
(very weakly inked)

original discovery

imperforate error

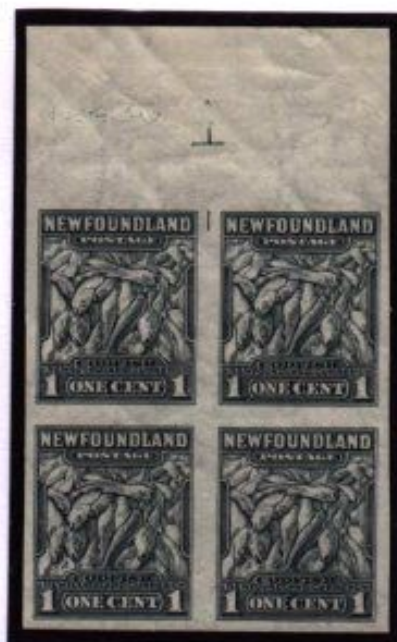


Plate 42430

1¢ gray with top center

65 M issued



Plate 43078

2¢ green with top center

60 M issued

RESOURCES ISSUE OF 1942 - 49

FIRST PRINTING STYLE

Plate 41418

3¢ carmine with left center

135 M issued

original discovery

watermarked/unwatermarked

*the plate number is shown
being incorporated into
this variety of the
misplaced alignment
of the stamp image
to the embedded
watermark impression*



PLATE PROOF
in colour of issue

Plate 41418

imperforate 3¢ carmine value
from the printers archives



RESOURCES ISSUE OF 1942 - 49

FIRST PRINTING STYLE

Plate 41420

4¢ bright blue with left center

4¢ blue with left center

115 M issued

no other examples of this perforated plate number have been reported

original discovery



RESOURCES ISSUE OF 1942 - 49

FIRST PRINTING STYLE

Plate 42543

5¢ violet with top center

20 M issued

original discovery

unique plate number 42543

number double printed;

number has complete
mirror image on
reverse side



only known perforated
example of this plate number

RESOURCES ISSUE OF 1942 - 49

FIRST PRINTING STYLE

Plate 41601

8¢ red with top center

13 M issued

no example of 8¢ top center plate in perforated form has been found

PLATE PROOF
in colour of issue

Plate 41601

imperforate 8¢ red value
from the printers archives



RESOURCES ISSUE OF 1942 - 49

FIRST PRINTING STYLE

Plate 41867

10¢ black brown with left center



15 M issued

assessed revenue charge
shows usage of 10¢ value
left center plate 41867

original discovery
perforation 12.8 x 12.5



FIRST PRINTING STYLE

Plate 41789

14¢ black with top center

4 M issued

Plate 41789

imperforate error

one sheet known



Plate 41789

imperforate horizontal error

one sheet known



Both of these errors are unreported in the literature

RESOURCES ISSUE OF 1942 - 49

FIRST PRINTING STYLE

Plate 41796

20¢ gray green with left center

6 M issued



rare perf. 12.5 x 12.8

*experimental ink
one sheet reported*

deep heavy
bright green

note: loss of printing
detail in letters



PLATE PROOF
in colour of issue

Plate 41796

imperforate 20¢ red brown value
from the printers archives



RESOURCES ISSUE OF 1942 - 49

FIRST PRINTING STYLE

Plate 41793

48¢ red brown with left center

2 M issued



PLATE PROOF
in colour of issue

Plate 41793

imperforate 48¢ red brown value
from the printers archives



Original research found that:

SECOND PRINTING STYLE

- a) single plate number in the top center or left center margin now has the addition of a ⊙ and ⊥ in the selvedge of stamp position 6 or 41.

Plate 42430

1¢ gray top center

20 M issued



Original research found that:
SECOND PRINTING STYLE

- a) single plate number in
the top center or
left center margin
now has the addition
of a © and 1 in the
selvedge of stamp
position 6 or 41.

Plate 43066

3¢ carmine top center

30 M issued



This 3¢ strip also has
the plate number showing as
a complete mirror image offset

original discovery

SECOND PRINTING STYLE

Plate 41794

15¢ magenta with left center

4 M issued



Original research found that:

THIRD PRINTING STYLE

- a) plate number now in five positions on sheet of 100; center and four corners
- b) a \odot and a \perp are found in the sheet margin at position 41 or 6.

PLATE PROOF

in colour of issue

Plate 42430

imperforate
1¢ gray value
from printers
archives



Plate 42430

1¢ gray

unknown M issued



THIRD PRINTING STYLE

PLATE PROOF
in colour of issue

Plate 43078

imperforate
2¢ green value
from the
printers archives

Plate 43078

2¢ green

65 M issued



RESOURCES ISSUE OF 1942 - 49

THIRD PRINTING STYLE

PLATE PROOF
in colour of issue

Plate 43066

3¢ carmine

imperforate
3¢ carmine
from printers
archives

Plate 43066

3¢ carmine

65 M issued



RESOURCES ISSUE OF 1942 - 49

THIRD PRINTING STYLE

Plate 41601

8¢ red

7.5 M issued

No example of 8¢ top center plate in its perforated form found yet

PLATE PROOF
in colour of issue

Plate 41601

imperforate 8¢ red value
from the printers archives



RESOURCES ISSUE OF 1942 - 49

THIRD PRINTING STYLE

Plates 43702

10¢ black brown

20 M issued



THIRD PRINTING STYLE

Sheet layout shows printing plate style found in margin center and four corners



RESOURCES ISSUE OF 1942 - 49

THIRD PRINTING STYLE

Plate 43838

10¢ black brown

5 M issued



unreported plate with
partial mirror image offset

THIRD PRINTING STYLE

Plate 41789

14¢ black

PLATE PROOF
in colour of issue

Plate 41789

imperforate 14¢ black value
from the printers archives



3 M issued

The corner plate attached to the *seldom encountered center plate*



Plate 43838

10¢ black brown left center

original discovery
perforation 12.5 x 12.8



Plate 41789

14¢ black

original discovery
perforation 12.8 x 12.8



Plate 41795

24¢ blue

original discovery
perforation 12.5 x 12.8



THIRD PRINTING STYLE

Plate 41796

20¢ gray green

1 M issued



unreported plate with
mirror image offset



Plates 41795

24¢ blue

2.5 M issued



unreported plate with
partial mirror image offset

THIRD PRINTING STYLE

PLATE PROOF
in colour of issue

Plate 41791

imperforate 25¢ slate value
from the printers archives

Plates 41791

25¢ slate

2 M issued



THIRD PRINTING STYLE

PLATE PROOF
in colour of issue

Plate 41793

imperforate 48¢ red brown value
from the printers archives

Plates 41793

48¢ red brown



3 M issued



Original research found that:

FOURTH PRINTING STYLE

- a) has the same plate number located in five positions on the sheet
- b) the \odot and \perp are missing in the margin.

original discovery

Plate 41794

3 M issued

only 15¢ value is found with this style



RESOURCES ISSUE OF 1942 - 49

FOURTH PRINTING STYLE

Plate 41794

regular ink

original discovery
aniline ink

15¢ magenta

showing two types
of printing inks;
one experimental



seldom encountered
perf. 12.8 x 12.5

original discovery



PLATE PROOF
in colour of issue

Plate 41794

imperforate 15¢ magenta value
from the printers archives



RESOURCES ISSUE OF 1942 - 49

Original research found that:

FIFTH PRINTING STYLE

- a) is from completely different plate
- b) sheet of 200 subjects made up of two panes 100 separated by a 45 mm gutter
- c) each pane has four plate numbers located in four corners
- d) no center plate
- e) in top of gutter space, between cutting lines, a larger type size of same plate number is located. Remnants of this number may be visible.

Only 1¢, 2¢, 3¢ and 5¢ values were printed as 200 subject sheets



PLATE PROOFS
in colours
of issue



*imperforate
with gutter
and with
plate numbers*



1¢, 2¢, 3¢
and the 5¢
values from
the printers
archives



FIFTH PRINTING STYLE

PLATE PROOF
in colour of issue

Plate 43965

1¢ gray value

imperforate with
gutter from the
printers archives



Plate 43965

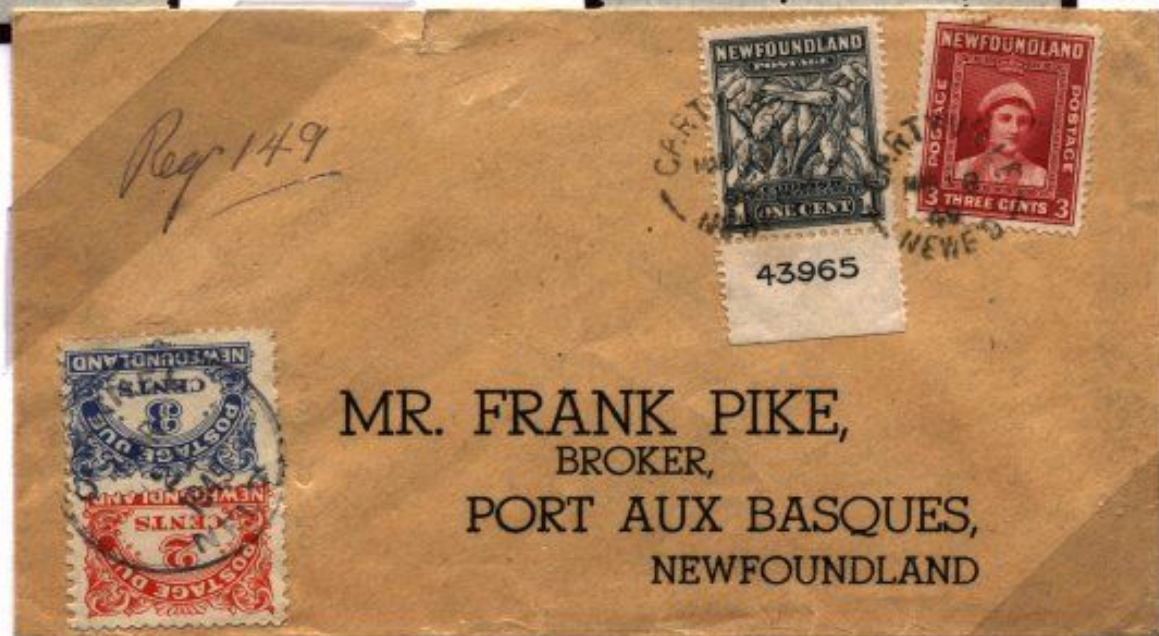
1¢ gray

35 M issued



1¢ value with
plate 43965;
paying 4¢ inland
letter rate in
effect for 1949.

Arriving in Channel,
distribution point
for Port aux Basques,
it was thought this
envelope contained
money and should have
been sent registered
as per post office
regulations; note
new registration
indication.
The registration fee
applied with postage
due stamps enabling
collection from
the addressee.



RESOURCES
ISSUE OF
1942 - 49

FIFTH
PRINTING
STYLE

Sheet
layout
showing
printing
plate
number
style.

Found
only in
the four
corners.



RESOURCES ISSUE OF 1942 - 49

FIFTH PRINTING STYLE

PLATE PROOF
in colour of issue

Plate 43968

2¢ green value

imperforate with
gutter from the
printers archives



Plate 43968

2¢ green

15 M issued



FIFTH PRINTING STYLE

PLATE PROOF
in colour of issue

Plate 43967

3¢ carmine value

imperforate with
gutter from the
printers archives



Plate 43967

3¢ carmine

4.5 M issued



FIFTH PRINTING STYLE

Plate 43967

3¢ carmine attached to part of gutter;
perforations show where the two panes were
joined before separation by the printers



Plate 43967

original discovery

*unreported plate with
mirror image offset*



FIFTH PRINTING STYLE

PLATE PROOF
in colour of issue

Plate 43966

5¢ violet value

imperforate with
gutter from the
printers archives



Plate 43966

5¢ violet

25 M issued



FIFTH PRINTING STYLE

Plate 43966

5¢ violet

*only one error
double pane
sheet known*

shows center gutter
between two panes;
plate 43966 displays
on both sides of the
gutter; demonstrates
vertical imperforate



vertical imperforate error from
lower right corner of right pane



complete mirror image
original discovery

5¢ value with
plate 43966 being
used to pay the
letter rate
to Canada



MEMORIAL UNIVERSITY COLLEGE ISSUE OF 1943

Canadian Bank Note Co., Ottawa printed 200 subject sheets having four panes. Issued in panes of 50 and as two panes separated by vertical gutter. Each pane had plate number on one outside corner; lower left corner has control number.



"Inaugural Flight
Pan American Airways
Gander to Karachi"



REV. E. A. BUTLER
SANDY POINT, ST. GEORGE'S
NEWFOUNDLAND



Dr H.L.Clark
M. C. 2.
Cambridge, Mass.
U.S.A.



AIR MAIL ISSUE OF 1943

Printed by the Canadian Bank Note Co., Ottawa in sheets of 200 subjects consisting of two panes of 100. The plate numbers are located in four outside corners of 200 subject sheet. Control number located in the lower left corner.



PROVISIONAL ISSUE OF 1946

Previously issued Memorial University College sheet of 50 was overprinted due to a shortage of 2¢ values. The plate number is found on one corner per sheet.



2¢ with
plate number
used to pay
the seldom
found 8¢ local
registered
letter rate;
based on the
3¢ local letter
rate and 5¢
registration
charge



A. W. LOVEYS
229 Hamilton Ave.
St. John's, Nfld.
P.O. Box 2053



PRINCESS ELIZABETH ISSUE OF 1947

This issue was printed by Waterlow and Sons Ltd., London. The plate was made with 200 subjects consisting of two panes of 100 separated by a gutter.

PLATE PROOF
in colour of issue

Plate 43359

4¢ blue

from printers archives; plate 43359 on both sides of gutter;
displaying imperforate center gutter between two panes of 100



Plate 43359

imperforate 4¢ blue value
from upper right corner;
features a heavy line showing where
paper roll joined another roll;
ridge at this junction caused
printing plate to seat poorly
whereby the over inking occurred

original discovery



PRINCESS ELIZABETH ISSUE OF 1947

Plate 43359

4¢ blue

90 M issued



Plate 43359

pre-printing
paper crease



JOHN CABOT ISSUE OF 1947

This 5¢ rose violet issue was printed by Waterlow and sons Ltd., London.

Plate 43476

50 M issued

Original research of literature showed in printers archives there existed:

FIRST PRINTING PLATE STYLE

- a) top center margin plate number
located 17 mm from stamp design

PLATE PROOF

in colour of issue

Plate 43476

imperforated
top center margin plate
from printers archives

only one known



SECOND PRINTING PLATE STYLE

- a) top center margin plate number
located 17 mm from stamp design;
b) there is \odot and \perp located position 6

PLATE PROOF

in colour of issue

Plate 43476

imperforate
top center margin plate
from printers archives

one of two known





NO OTHER SHEETS WITH THESE PLATE NUMBERS FOUND IN PRINTERS ARCHIVES

However, from observing the issued perforated sheets, it is discovered that a third style of printing plate had to be developed and utilized.

As to what quantities that were printed from it - unknown.

JOHN CABOT ISSUE OF 1947

THIRD PRINTING PLATE STYLE

- a) plate numbers found located in four corners
- b) there is  and  located position 6

no perforated top center margin plates have been found

corner from first/second
printing plate is shown
without plate number



JOHN CABOT ISSUE OF 1947

THIRD PRINTING PLATE STYLE

PLATE PROOF
in colour of issue

Plate 43476

5¢ rose violet
imperforate upper right corner

*not seen or found in
printers archives
according to literature*



imperforate error

upper right corner
plate number

displays in top sheet selvedge
double horizontal perforations

one sheet known



both are unrecorded in the literature



usage on
bank tag
displaying
plate number