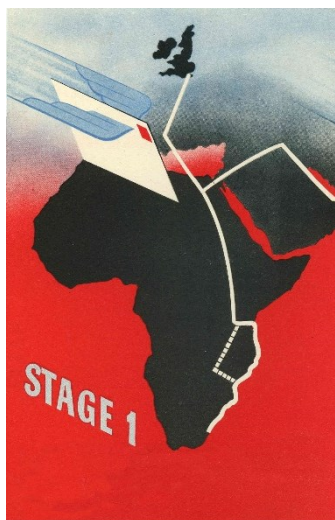


# Canadian Mail Sent via the **EMPIRE AIR MAIL SCHEME** 1938 - 1939



## Purpose:

The exhibit shows Canadian **1<sup>st</sup> class letters and post cards** mailed and transported via the Empire Air Mail Scheme.

## Background:

All first-class mail to certain Empire countries as carried **by air beyond England** as the normal means of conveyance, was inaugurated by Great Britain on the 29<sup>th</sup> June, 1937 which extended to South Africa. On the 23<sup>rd</sup> of February, 1938, with the implementation of the 2<sup>nd</sup> stage, **this was when service was also extended to Canadian mail** per the February 5<sup>th</sup> notice of the Canadian postal guide supplement. A third stage was extended to Australia and New Zealand with additional destinations admitted at various time frames.

## Rates:

Under the new arrangements the Postage rate for all three stages will be:

**Letters - 6 cents per half ounce.**

**Postcards - 4 cents.**

One key instruction for this service:

**Letters should not in any case bear air mail labels or other markings to indicate air transmission.**

Significant items:

Registered first Class mail will also be forwarded by air as the means of transmission.

**Transmission of mail will be by air in Canada when available, to New York** and then surface across the Atlantic, then by air beyond England thenceforth. Some destinations will finish by ship.

## Plan:

1 - Title Page

2 - Stage 1

9 - Stage 2

14 - Stage 3

## Significant Items:

- Only reported EAMS post card with **full payment by a 4 cent 1937 Mufti stamp to any destination**, p 3.
- Six cent half ounce letter rate, short-paid, with postage due to **Kisumu, Kenya, due tied**, p 4.
- Registered 10 cents + 12 cents double weight letter rate to **Tanganyika, East Africa**, p 5.
- **Southern Rhodesia Triple weight letter rate** up to 1 ½ ounces, 18 cents full payment, p 6.
- Six cent half ounce letter rate to **Iraq**, p 10.
- Six cent half ounce letter rate postage due to **North Borneo**, then to **Singapore**, dues tied (not collected), p 12.

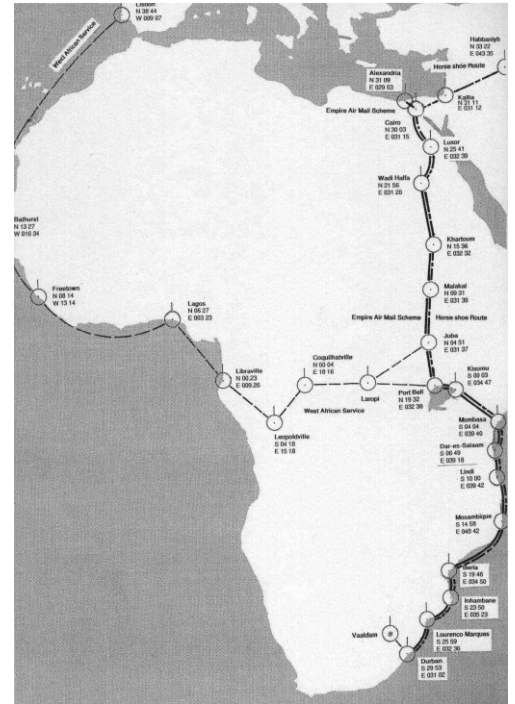
# EAMS - Stage 1

In an attempt for the **British Air Ministry** to maintain leadership of world civil aviation in the 1930's they wanted to shift transport of all first-class mail within the Empire by air.

Britain started in 1937, however, on September 15, 1937 by an **Order in Council P. C. 2102** - Authority for Canada's participation was given. A Post Office bulletin instructing mail service to be started on the **23<sup>rd</sup> of February 1938** that included **Stage 1** and **Stage 2** routes and destinations.

Destinations via Africa: Anglo-Egyptian Sudan, Aden, Mauritius, Kenya, Uganda, Tanganyika, Nyasaland, Northern Rhodesia, Southern Rhodesia, Union of South Africa, Swaziland, Seychelles, and Zanzibar

**The first route** from England was via France, Italy and Greece to Alexandria then they would diverge depending upon the final destination.



## EAMS Stage 1

6¢ per ½ ounce

**Air Mail Letter Rate to Egypt**

5¢ payment short-paid 1¢ charged T10 Centimes postage due, paid by an 8 milliemes Egyptian postage due stamp

The cost of Canada's Participation in the new service amounted to 5000 pounds per annum.

This mail carriage payment was then increased to 6,500 pounds per annum.

**It was suggested** Canada affix a three cent rate, but was unable due to the large expense of establishing the Trans-Canada Air Service, including the cost of steamship service across the Atlantic to England.



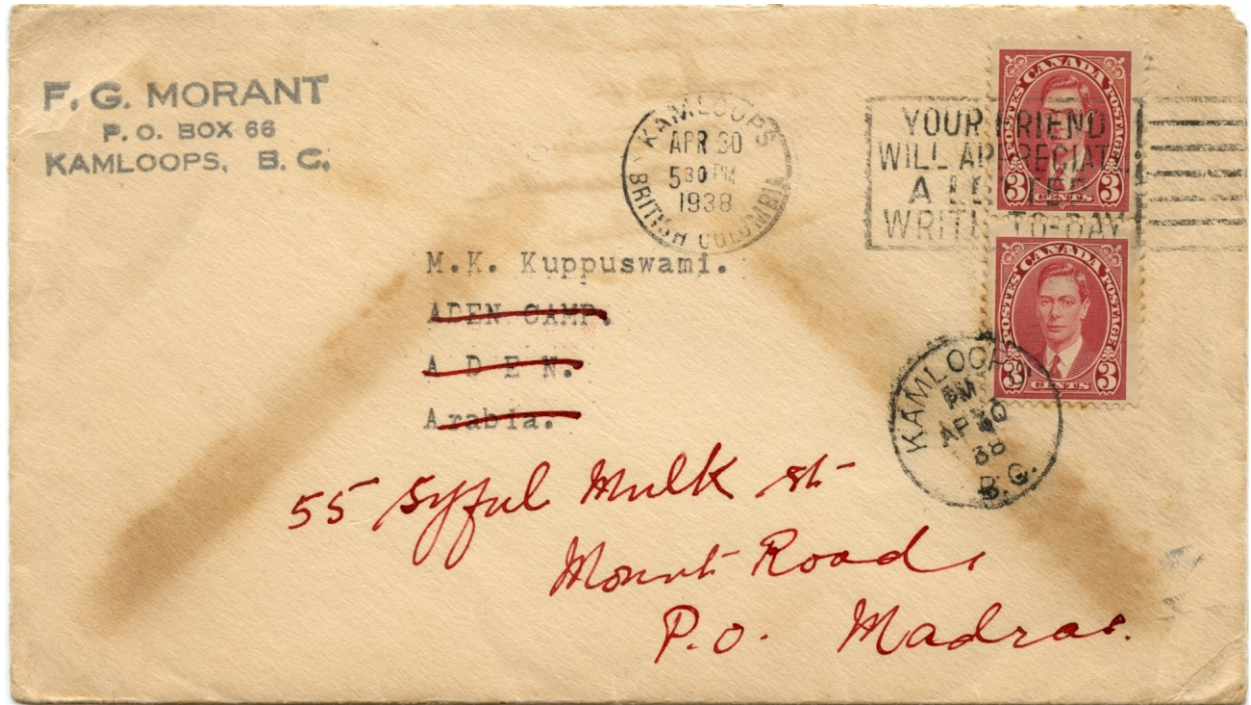
Refused or unknown and returned to sender on the 15 MA 38 to the Ottawa Dead Letter Office



6¢ per 1/2 ounce

to Aden

Fully paid 6¢ per first 1/2 ounce



Kamloops, B.C. APR 30 1938 to Aden Camp, Aden, receiver b/s 2 May 1938, forwarded to P.O. Madras.

Air Mail Post Card Rate

to Mauritius

4¢ per item

4 cent mufti fully franked post card

ONLY REPORTED POST CARD with full payment by a 4 cent 1937 Mufti stamp to any EAMS destination.

Post cards sent via the EAMS are much scarcer than letters, fully paid ones even more so.



Mailed from Debden, Sask. AUG 15 1939 by rail to Winnipeg, air mail to Montreal, Surface across the Atlantic, then Imperial Airways to Durban, surface to Port Louis, Mauritius. Passed by censor handstamp Mauritius.



6¢ per ½ ounce

to Kenya

5¢ payment short-paid 1¢ charged T10 Centimes postage due, paid by a 10¢ Kenyan postage due stamp at Kisumu

**PLEASE ADVISE YOUR CORRESPONDENTS THAT THE LETTER RATE FROM CANADA IS SIX CENTS PER HALF OUNCE.**

**Instructional letter rate marking:**

There were a few varieties of this handstamp used on Canadian mail.

Other countries also have a similar marking to promote the correct letter rate as a majority of mail for the EAMS destinations was incorrectly franked for both letters and post cards.



Fully paid 6¢ per first ½ ounce

Air mail within Canada to New York, per m/s  
*Via S.S. Queen Mary*, surface across the Atlantic, to England, by air beyond England via the Mediterranean to Alexandria, Egypt.



Toronto, Ont. Mar 7 1939 to Mombasa, Kenya, East Africa, received at Nairobi, Kenya Mar 22 1939



6¢ per ½ ounce

to Tanganyika Territory

Fully paid 6¢ per first ½ ounce

Note there was to be no etiquette label or manuscript instructions on this type of mail as per post office instructions, as all 1<sup>st</sup> class mail was sent by air mail



12¢ double weight rate up to 1 ounce plus 10¢ registration fee



Dar es Salaam is 333km from Tanga to the north.



**EAMS Stage 1**

6¢ per ½ ounce

12¢ double weight rate up to 1 ounce plus 10¢ registration fee



**Air Mail Letter Rate**

to Nyassaland



b/s Blantyre  
July 4<sup>th</sup>, 1938

to Southern Rhodesia

vv

**EAMS Stage 1**

4¢ per item

2¢ payment short-paid 1¢ charged T20 Centimes postage due, paid by a 2d. South African postage due stamp at Pretoria.



**Air Mail Post Card Rate**

to South Africa

Glencoe, Ont.  
Nov 19 1938 to  
Pretoria, South  
Africa.

**Air Mail Letter Rate**

to South Africa

6¢ per ½ ounce

12¢ double weight rate up to 1 ounce

Per Cassidy: **UK Outbound mail** was divided into 'roads' representing a destination – a country or group of countries – rather than a route.  
A- Africa, I - India, S – Sydney with direction E-East, W-West.



Montreal, Canada Mar 6 1939 to Durban, South Africa the last main destination.  
Most mail from this point went by surface.

18¢ triple weight rate up to 1 ½ ounce

Triple weight rates are extremely uncommon but a few are known from Canada.



6¢ per first ½ ounce from the **Royal Train Post Office**





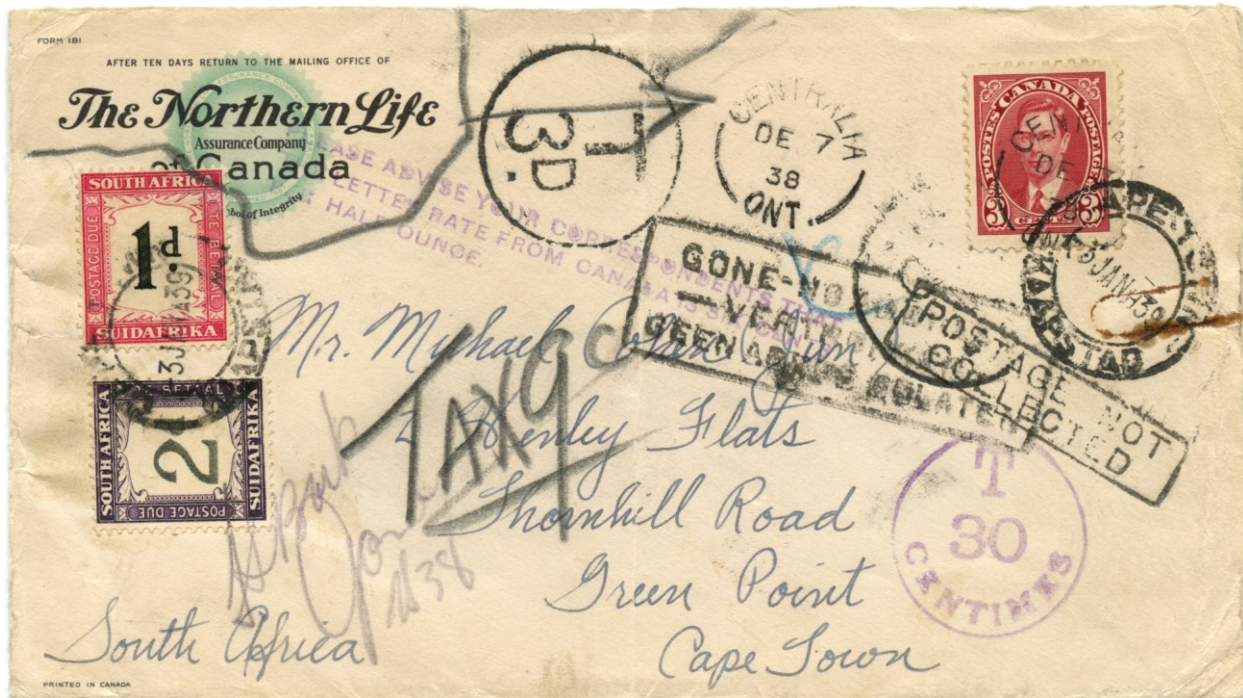
# EAMS Stage 1

# Air Mail Letter Rate

6¢ per ½ ounce

to South Africa

3¢ payment short-paid 3¢ charged T30 Centimes postage due,  
T3d. franked by a 1d. & 2d. South African postage due stamp Cape Town.  
However, marked **POSTAGE NOT / COLLECTED** sent to Ottawa DLO, Canada **TAX 9¢**.



Canadian **TAX 9¢** is for 6¢ postage due originally plus 3¢ Dead Letter Office Return fee.

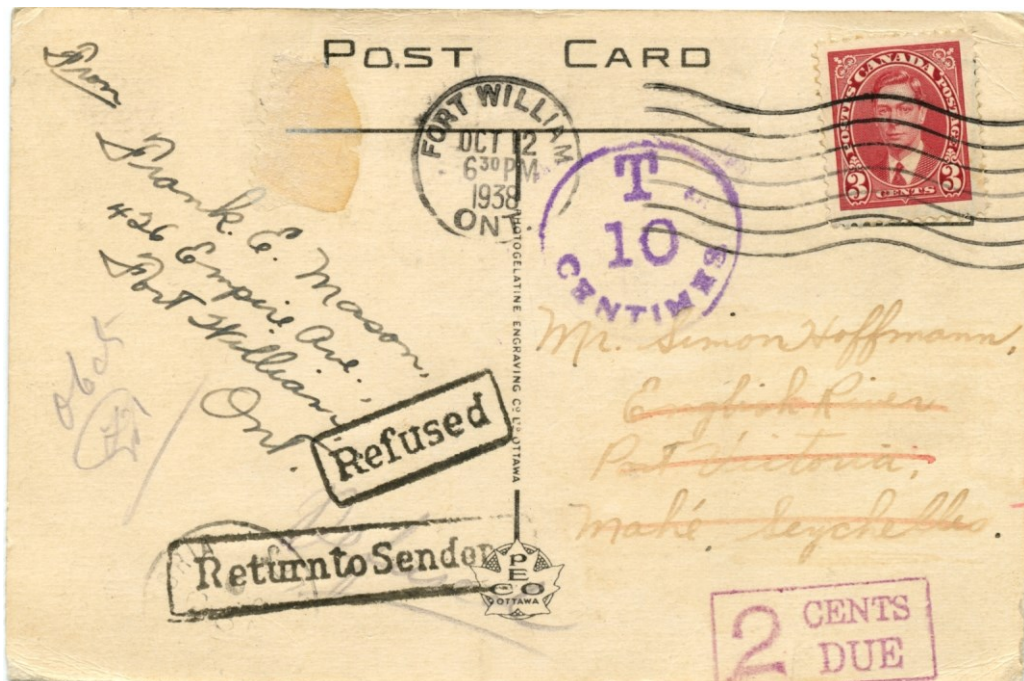
# EAMS Stage 1

# Air Mail Post Card Rate

4¢ per item

to Seychelles

3¢ payment short-paid 1¢ charged T10 Centimes postage due,



Per the **Seychelles Post Office.com**:  
Airmail service became effective in February 1938  
**Via Karachi and Nairobi** by surface mail.

The first civil air mail service directly was from Australia in June 1939.

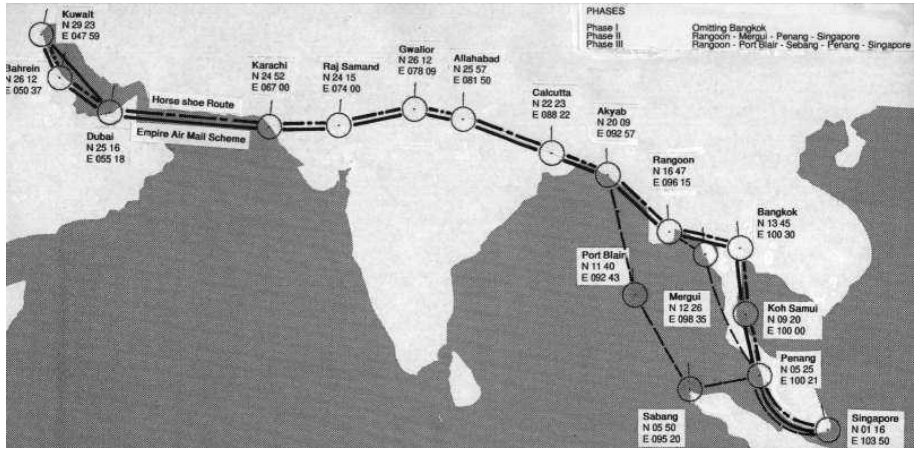


# EAMS - Stage 2

On the 23<sup>rd</sup> February, 1938, Stage 2 followed the **Eastern route** from Alexandria, turned north-eastwards over the Mediterranean to refuel at Lake Tiberias, via **Palestine**, and the Syrian desert to Habbaniya, **Iraq**, then turned southwards to Basra Iraq.

From Basra they flew to **Kuwait**, down the Persian Gulf to **Bahrein & Dubai**. Alighted at Dubai, onwards to Karachi over the Gulf of Oman, then to Calcutta, Bombay, **India** to Ceylon, **Burma**, **Bangkok**, **Thailand** and **Malaya**, **Unfederated Malay States**, **Singapore**, **Sarawak**, **North Borneo**.

**Iraq and Kuwait joined June 3, 1939.**



## EAMS Stage 2

4¢ per item

## Air Mail Post Card Rate to Palestine



2¢ payment short-paid 2¢ charged T20 Centimes postage due, paid by an 8 mil. Palestine postage due stamp, Jerusalem.

Frequency of service to Palestine was 5 times a week with 2-3 days' time saved by the 3<sup>rd</sup> stage.

3¢ payment short-paid 1¢ >>> charged T10 Centimes postage due, paid by a 6 mil. Palestine postage due stamp, Tel Aviv.

**Imperial Airways (IAL)** was the main transporter of airmail. Smaller regional firms carried mail mostly overland to various destinations not directly on the route.





6¢ per ½ ounce

to **Iraq**

Per the June 3, 1939 postal guide supplement "Iraq and Kuwait are now included in the Empire "ALL-UP" air mail scheme and accordingly all first-class mail so addressed will be forwarded beyond England by air as the normal means of conveyance. The rate of postage in future will be 6 cents per half ounce."

Due to war hostilities starting in September 1939, only 3 months of actual service could be achieved to Iraq at this rate.

"The night stop was made at the Basra, Iraq Railway guest house." Cassidy.



Brantford 1<sup>st</sup> Jun 1939 to Baghdad, Iraq received in Baghdad 17 days later 18 Jun 1939.

6¢ per ½ ounce

to **India**

Mailed just before Canada Post announcement October 1939, this service was no longer in effect.

Air Mail services where available were offered at much higher previously used rates.

Toronto, Ont. Sep 25 1939 to Calcutta, India. Censored just after start of WWII.





6¢ per ½ ounce

to India

Double 6¢ per ½ ounce rate fully paid with 2 x 6¢ air mail stamps.



to Ceylon

6¢ first ½ ounce rate plus 10¢ registration fee

Total trip of 19 days, including surface across the Atlantic ocean, & air mail beyond England to India southward to Ceylon.



Notre Dame de Grace 15 Nov 1938 to Colombo, Ceylon 4 Dec



6¢ per 1/2 ounce

to Burma

First 1/2 ounce rate paid May 28<sup>th</sup> 1939

The route was from Dubai to Karachi over the gulf of Oman, then to Rangoon, Burma.

Weather conditions were at an extreme with desert conditions, then monsoons from Karachi to Singapore.



to Sarawak, North Borneo forwarded to Singapore

5¢ payment short-paid 1¢ charged T10 Centimes postage due, to both countries, marked INCONNU / NOT KNOWN

*no such name in / 131 Middle Road, S'pore*

Sent to the Dead Letter Office in Singapore on the 1<sup>st</sup> Dec 1938, forwarded to the Ottawa Dead Letter Office 27<sup>th</sup> Dec, processed and returned to the writer.

*An Indian company with Imperial Airways flew via Jodhpur, Delhi, Siam, and Malaya to Singapore.*





6¢ per 1/2 ounce

to Singapore

Fully paid 6¢ up to 1/2 ounce rate, forwarded to Batavia, this was along the north coast of Java part of the Batavia – Surabaya sector.

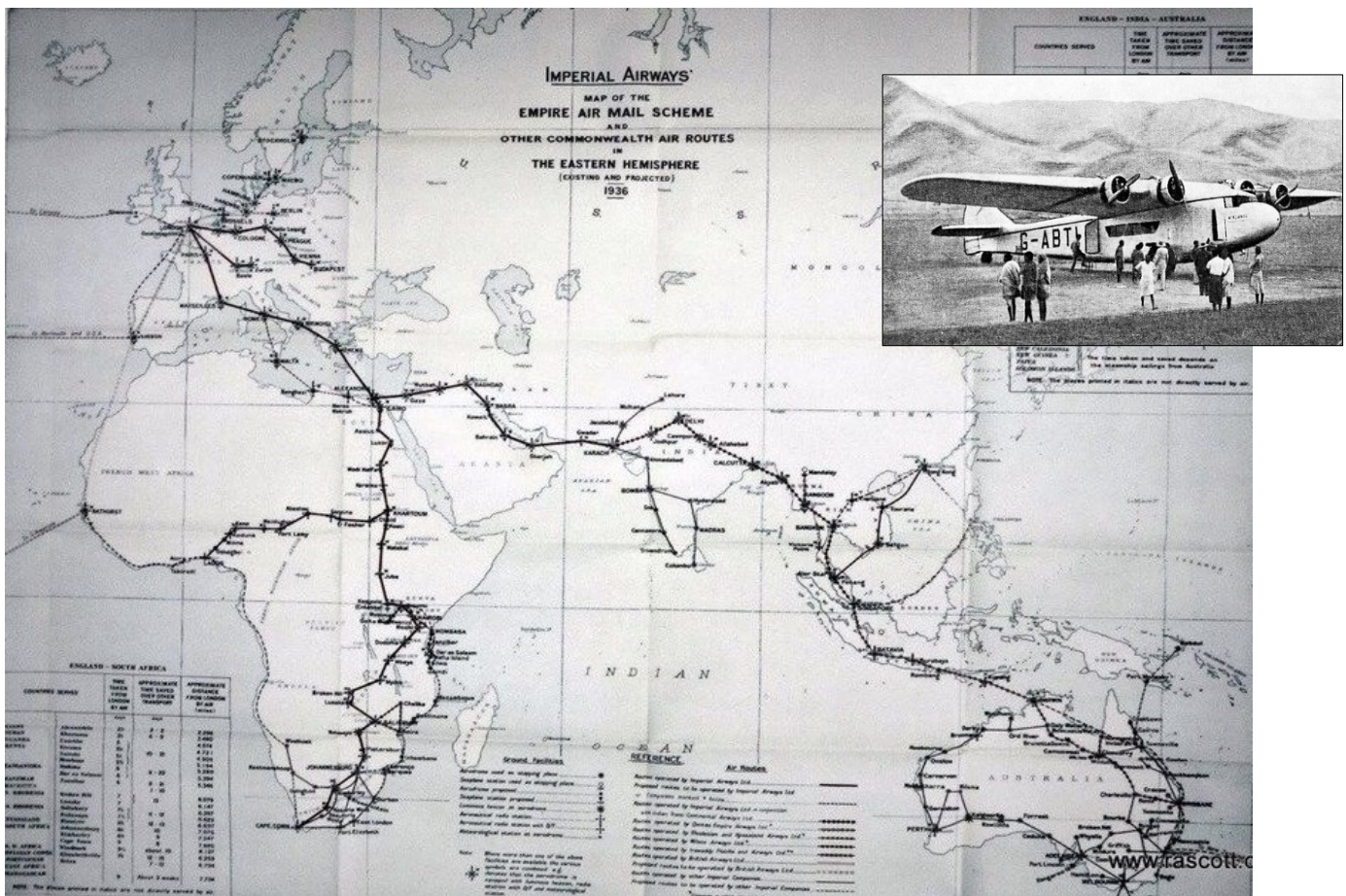
The Road and Direction to Singapore was I for India and included S and N for Southbound and Northbound.

Imperial Airways Ltd, (IAL) flew the EAMS to Singapore.

The GPO contract required IAL to deliver the mail within 24 hours of the scheduled arrival time for full payment. A delivery within 48 hours of the scheduled time, was paid at half rate and if the mail was later than 48 hours, IAL carried the mail for nothing. per Cassidy.



Map of projected Empire Air Mail Scheme routes in 1936, new destinations were later added.





# EAMS - Stage 3

Extension of service for first class mail by air beyond England for **April 1, 1939** per the March 11, 1939 Post Office Weekly Bulletin "Empire Air Mail Scheme" extended to **Hong Kong, Australia and New Zealand**.

Destinations: Australia, Banks Islands, Cook Islands, Fanning Island, Gilbert & Ellice Islands, Hong Kong, Nauru, New Guinea, New Hebrides, New Zealand, Norfolk Island, Papua, Samoa (British), Solomon Islands and Tonga, and (New Zealand surface).

**Singapore is the junction to Australia,** QANTAS Empire Airways (QEA) via Netherlands East Indies to Darwin, Australia through Queensland to Brisbane.

**The final link** in the EAMS, the trans-Tasman Sea sector from Australia to New Zealand, was to be flown by the three Tasman Empire Airways Limited (TEAL) S.30 Empire 'A' 'boats, starting in 1940, **never to be**.



## EAMS Stage 3

6¢ per ½ ounce

3¢ payment short-paid 3¢  
charged T30 Centimes  
postage due, 3x10c  
Hong Kong dues

Stand-by 'boats were  
stationed at Alexandria,  
Kisumu, Durban,  
Singapore, and Sydney.

## Air Mail Letter Rate to Hong Kong



For the **Hong Kong** extension a separate payment of 1304 gold francs was agreed to. At the suggestion of the British Post Office this was paid in advance for the entire year by CPO.



6¢ per 1/2 ounce

to Hong Kong

Double 6¢ per 1/2 ounce rate fully paid 12¢

No. 3  
Division, from  
Karachi  
eastwards to  
Singapore and  
Hong Kong  
had a total of  
twenty pilots  
flying out of  
eighty-five  
pilots in total.



**Air Mail Post Card Rate  
to Australia**

2¢ payment by coil stamp,  
short-paid 2¢ for post card  
rate, charged T20 centimes  
postage due (4 cents)

<<

**Air Mail Letter Rate  
to Australia**

Fully paid 6¢ up to the >>  
first half ounce.

After July 1938 on some  
services, Quanta aircraft  
continued onwards with  
the eastbound service  
flown in a QEA 'boat to  
Brisbane and Sydney.





6¢ per ½ ounce

to New Zealand

3¢ payment short-paid 3¢ charged T30 Centimes postage due equal to 3d paid with a 1d and 2d New Zealand due stamp.



18¢ triple weight rate up to 1 ½ ounces plus 10¢ registration fee

After declaration of war by France and GB on Germany, this did not seem to have an immediate marked effect on running from the United Kingdom.

With 18 months of full operation the EAMS was replaced by an air fee service at much higher previous rates.

