

SOVEREIGNTY, SUBSTANCES, SMALL CENTRES AND SUBS:

Closed Post Offices of the Northwest Territories

This exhibit shows all the closed post offices on the Northwest Territories (using the boundaries as set from 1912-1999) including those operated by the US and Great Britain. Name changes are not shown unless the post office at that location has actually closed. Many unique or very scarce items and markings are shown.

The material is organized chronologically or alphabetically around four themes as follows:

Sovereignty

Canada needed to demonstrate effective occupation and use of its arctic region to prove its sovereignty. This was accomplished through detachments of the Royal Canadian Mounted Police in the high arctic, weather stations in the Queen Elizabeth Islands and the military base at Alert. Post offices in themselves were expressions of Canadian sovereignty.

During World War II and the Cold War, the US had several large infrastructure projects in the NWT including the Crimson Route, the Pinetree Line and the Distant Early Warning Line to help protect North America. Several US post offices operated in the NWT. British Forces even had a short-lived post office associated with research on Ellesmere Island.

Craig Harbour (1922-56)
Bache Peninsula (1926-33)
Dundas Harbour (1925-51)
Winter Harbour (1947)
Isachsen (1948-78)
Mould Bay (1949-97)
Alert (1950-73)
Cape Herschel (1953-54)
Alexandra Fiord (1954-63)
MPO 310 (1973-99)

APO 692 Frobisher Bay (1942-49)
APO 693 Southampton Island (1943-45)
APO 4880 Padloping Island (1943-47)
APO 677-1 Frobisher Bay (1954-55)
APO 863 Frobisher Bay (1955-58)
APO 677-5 Frobisher Bay (1958-59)
APO 440 Frobisher Bay (1959-60)
APO 228 Frobisher Bay (1960-63)
APO 677-1 Resolution Island (1958-59)
APO 432 Resolution Island (1959-61)
BFPO 625 Borup Fiord (1988)

Substances

Non-renewable resource extraction is the theme presented in this section. Both mining and hydrocarbon based communities are shown. In some cases, a support or staging area for mineral production had its own post office (e.g. Great Bear Lake). In the 1940-70 period, it was common to have company towns around a mine but fly-in/fly-out operations are the norm now. During World War II, the US built the Canol Project to take inland oil to Alaska. Several US post offices were associated with this development. Some of the scarcest of all NWT post offices fall into this category as they were often open for a short period with small populations.

Great Bear Lake (1932-33)
Cameron Bay (1933-37)
Port Radium (1937-82)
Camsell River (1933-35)
Camlaren (1938-39)
Outpost Island (1941-42)

Canol (1942-45)
APO 999 Fort Smith & Norman Wells (1943-44)
APO 999-1 Canol (1942-44)
APO 999-2 Norman Wells (1942-43?)
APO 473 Canol (1943)
APO 473-1 Norman Wells (1943)

Discovery (1960-69)
Pine Point (1964-88)
Tungsten (1968-86)
Strathcona Sound (1975-76)
Nanisivik (1976-2003)
Lupin (1981-92)
Polaris (1982-2002)

Small Centres

Small communities or settlements are shown in this section. These post offices operated in remote locations and generally closed when the populations dwindled or an entire community was relocated due to its isolation.

Port Burwell (1933-78)
Fort Ross (1940-48)

Reindeer Depot (1948-62)
Reindeer Station (1962-68)

Rocher River (1950-63)
Cameron Hills (1964-65)

Subs

This section focuses on the two special post offices set up for visits of Canada's Governor General (the *SS Distributor* and Fort Michener) and the sub post offices, retail post offices, franchise outlets and gross margin offices that operated in the larger urban or regional centres of the NWT. Many of these offices were short-lived and are very hard to find.

Craig Harbour

Sovereignty

Opened: August 28, 1922

Closed: August 1, 1926

Reopened: September 4, 1933

Closed: September 8, 1940

Reopened: August 30, 1951

Moved to Grise Fiord: August 25, 1956 (new date stamps used from January 1, 1957)

Money Order Office Number: None (Non-Accounting)

Money Order Office Number: 55375 (Non-Accounting)

Money Order Office Number: 55375 (Non-Accounting)

The Canadian government established the Eastern Arctic Patrol in 1922 to exert sovereignty over the eastern N.W.T. Craig Harbour was the second RCMP detachment in this region, named after John Davison Craig the Department of Interior representative on the first Patrol. The first date stamp was not proofed until December 16, 1922 but was only used during 1923 before the main detachment building and post office burned down on February 22, 1924. The post was closed in favour of the more northerly Bache Peninsula and reopened again afterwards for two periods, before finally being moved to Grise Fiord.

Cover with the second broken circle date stamp. Signed by postmaster at top left.



Overpaid tourist souvenir cover. One of two examples of first registration box, not in proof books, but likely made in 1924.

Only reported example of the third registration box.



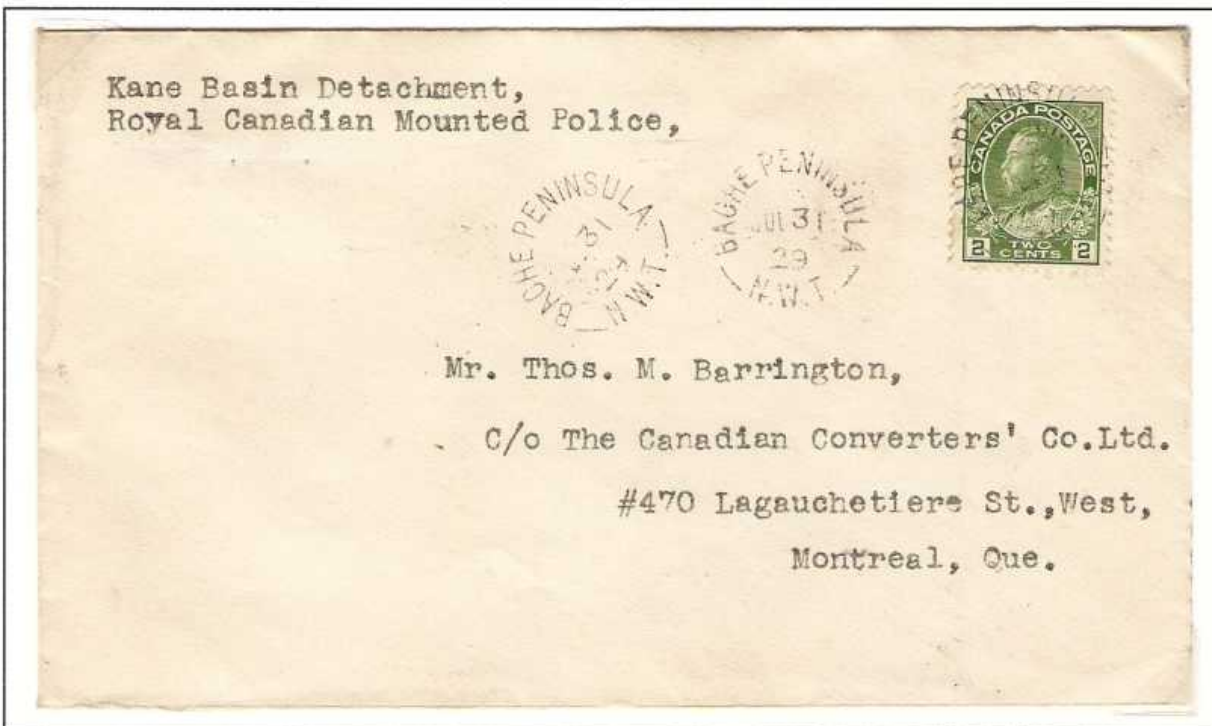
Bache Peninsula

Sovereignty

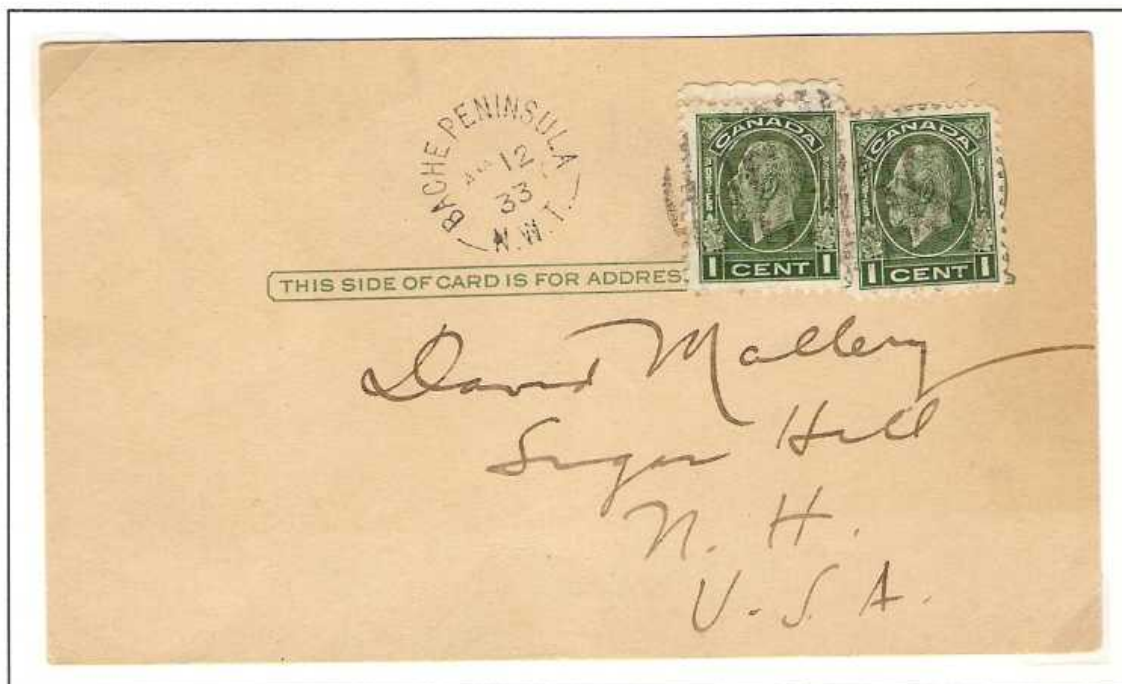
Opened: August 7, 1926
Closed: April 12, 1933

Money Order Office Number: None (Non-Accounting)

This RCMP post was set up on August 7, 1926 to monitor Greenlandic Inuit activities on Ellesmere Island. Difficult ice conditions prevented ships from reaching the post in 1928-30 and 1932. During these years, supplies were landed to the south and sledged to the post in the winter. Mail exchanges still took place with the ship at nearby points. The RCMP personnel moved to Craig Harbour on April 12, 1933 when Bache Peninsula was permanently closed.



Earliest reported use of Bache Peninsula broken circle date stamp. A shore party from the RCMP post met the Beothic at nearby Fram Haven on August 3, 1929 when this mail was taken on board.



Latest reported use of the Bache Peninsula broken circle but actually cancelled at Craig Harbour when the Nascopie picked up the RCMP personnel. Note that the Medallion issue stamps were released on December 1, 1932 meaning there could have been no supply of these stamps at Bache Peninsula when the post closed on April 1, 1933.

Dundas Harbour

Sovereignty

Opened: September 1, 1925

Closed: September 1, 1933

Reopened: September 8, 1945

Closed: August 29, 1951

Money Order Office Number: None (Non-Accounting)

Money Order Office Number: 55380 (Non-Accounting)

A RCMP detachment was established on Devon Island, NWT on August 17, 1924 and called "Bernier" in honour of the captain of the Eastern Arctic Patrol ship Arctic. The Post Office Department would not accept that name as a post office in Quebec with that name was already in operation. Dundas Harbour was chosen as the new name and used the following summer when the post office opened until 1933. It was reopened 1945-51 by the RCMP and then closed permanently, although the buildings are still there.

A cover showing the broken circle date stamp from the first period of post office operation.



A souvenir registered overpaid registered cover showing the full circle date stamp and registration box from the second period of operation for the post office.



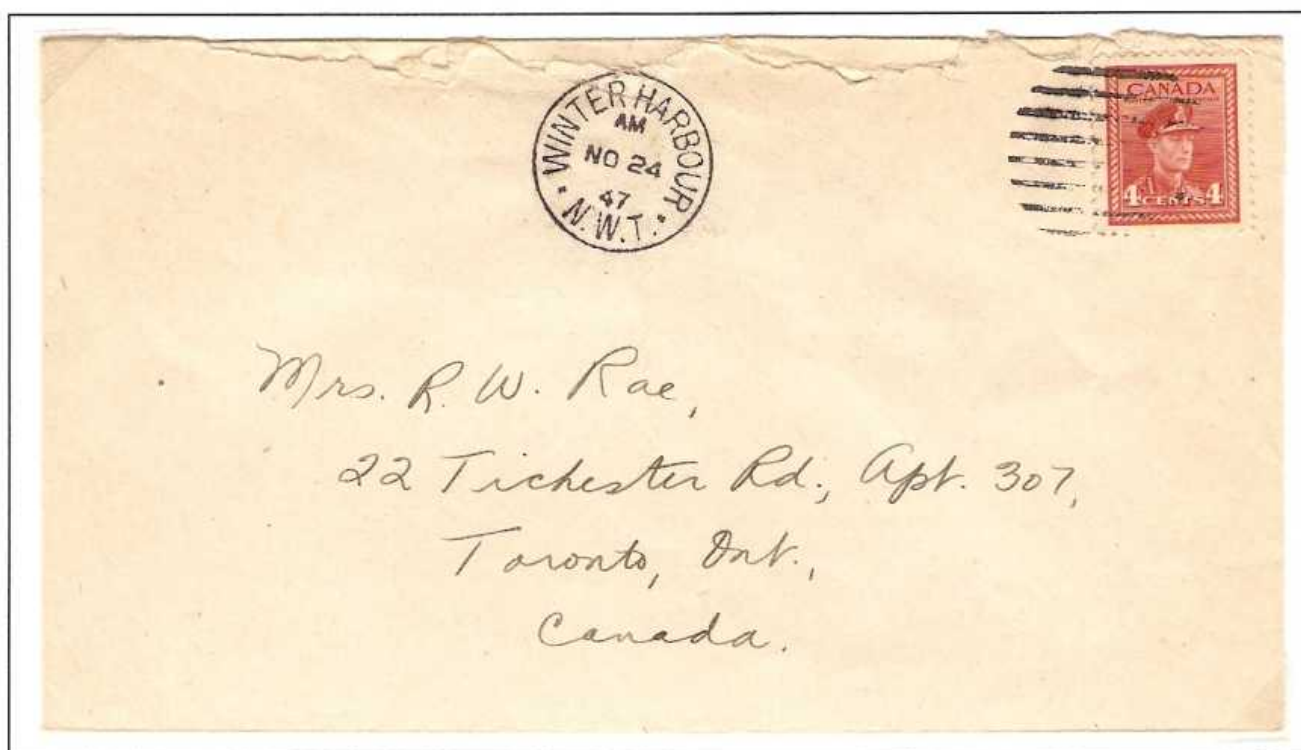
Winter Harbour

Sovereignty

Opened: November 15, 1947 (at Resolute Bay)
Name Changed to Resolute Bay: December 23, 1947

Money Order Office Number: 55615 (Non-Accounting)
Money Order Office Number: 55568 (Non-Accounting)

Canada and the United States agreed in 1946 to set up a chain of High Arctic weather stations. One of the sites selected was Winter Harbour, NWT on the south coast of Melville Island. The following year, the convoy of ships sent to establish the stations could not reach Winter Harbour due to ice conditions. The weather station intended for Winter Harbour was set up at a more central and accessible location, Resolute Bay. Supplies began to be brought ashore on August 31, 1947. Postal equipment prepared for Winter Harbour was used at Resolute Bay from November 15, 1947 until new equipment was airdropped and began to be used in December 1947 that read 'Resolute Bay'.



Only reported use of the Winter Harbour circle date stamp. Cover sent by a Canadian serving at Resolute Bay.
A registration box was also prepared but has not been reported used.

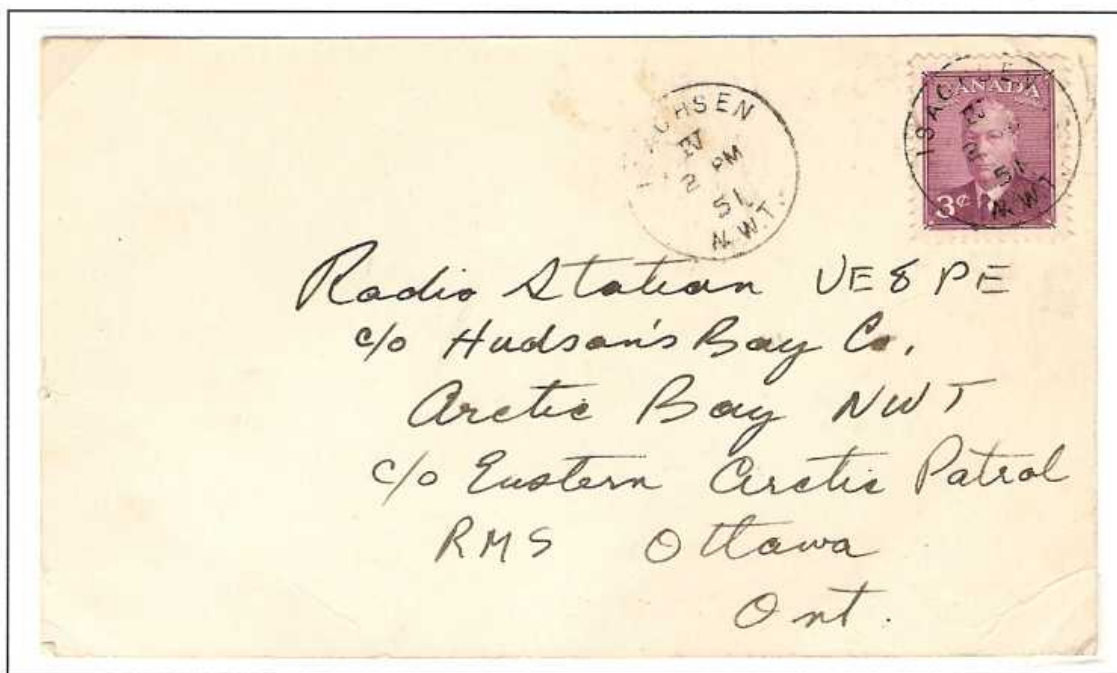
Isachsen

Sovereignty

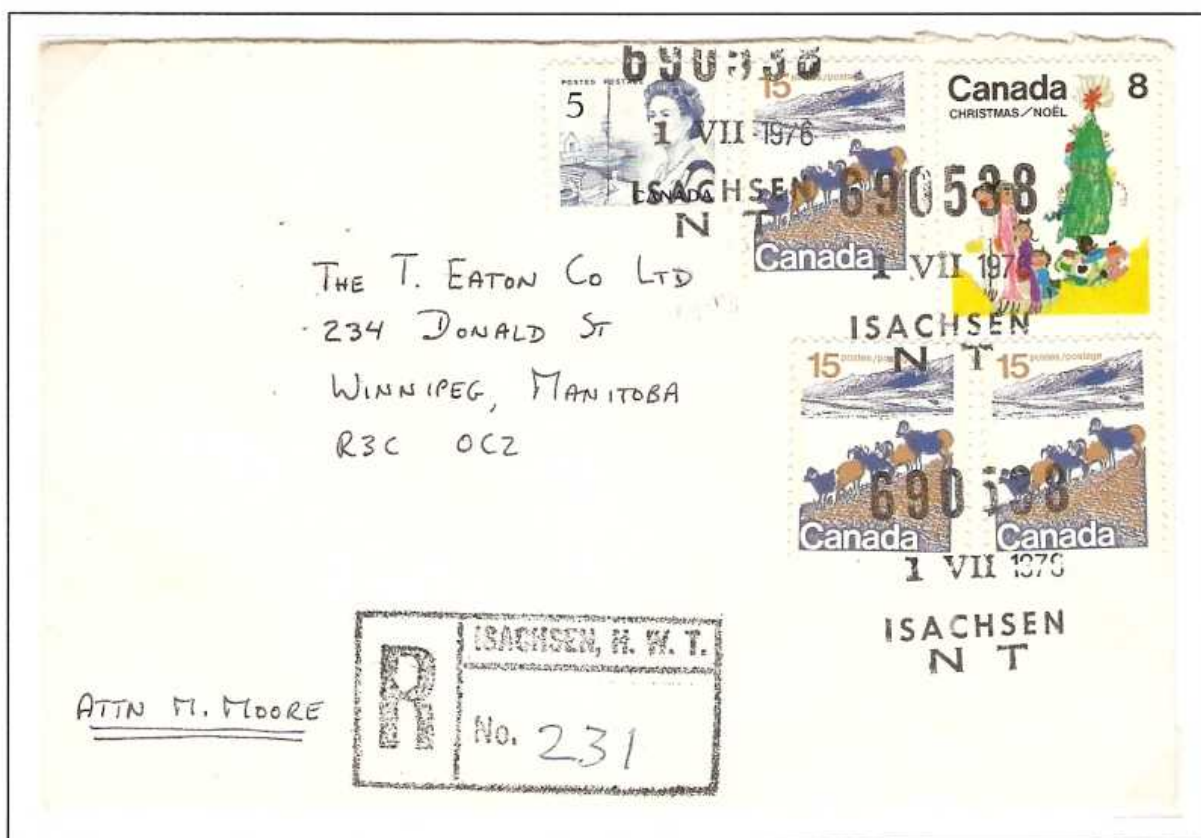
Opened: October 26, 1948
Changed Status: April 1, 1973
Closed: August 15, 1978

Money Order Office Number: 55475 (Non-Accounting)
Post Office Computer Organization Number: 690538 (Non-Accounting)

When the weather station was set up at Resolute Bay during the summer of 1947, supplies were also landed for two satellite stations that were inaccessible by water. On April 3, 1948 the first personnel for one of these satellite stations were flown to Ellef Rignes Island about 500 km northwest of Resolute. The station was closed in 1978 due to its high cost of operation.



An early example of the circle date stamp on a radio post card to a non-post office point via the Eastern Arctic Patrol.



Commercial registered cover showing the POCON cancel and registration box.

Mould Bay

Sovereignty

Opened: April 20, 1949
 Changed Status: April 1, 1973
 Changed Status: March 18, 1996
 Closed: June 30, 1997

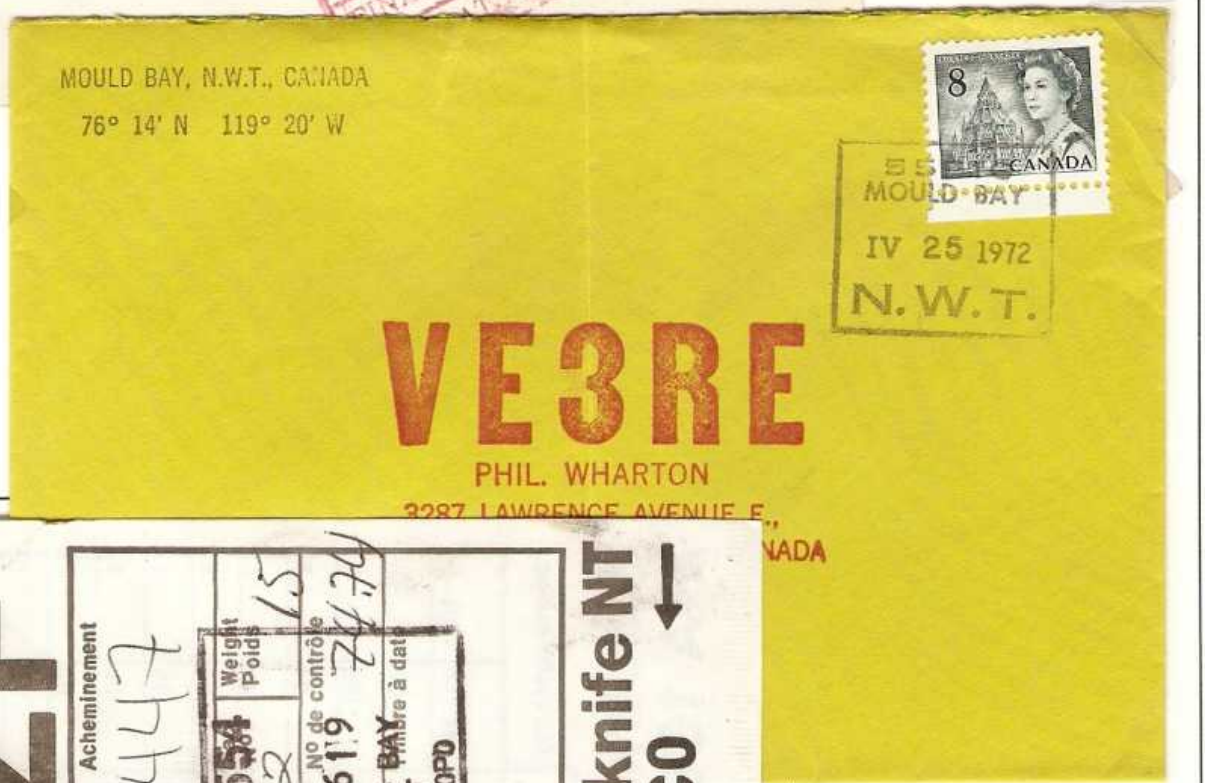
Money Order Office Number: 55510 (Non-Accounting)
 Post Office Computer Organization Number: 690554 (Non-Accounting)
 Responsibility Centre Number: 248940 (Non-Accounting)

When the weather station was set up at Resolute Bay during the summer of 1947, supplies were also landed for two satellite stations that were inaccessible by water. On April 11, 1948 the first personnel for one of these satellite stations were flown to Prince Patrick Island about 700 km west of Resolute. The station was closed in 1997 due to its high cost of operation.



Commercial registered cover short paid five cents but should have been charged double the deficiency. Stamps cancelled with circle date stamp and registration box at upper left.

Commercial from one ham radio operator to another showing the MOON cancel.



Mail bag showing the last POCON cancel used at Mould Bay.

Alert

Sovereignty

Opened: April 30, 1950

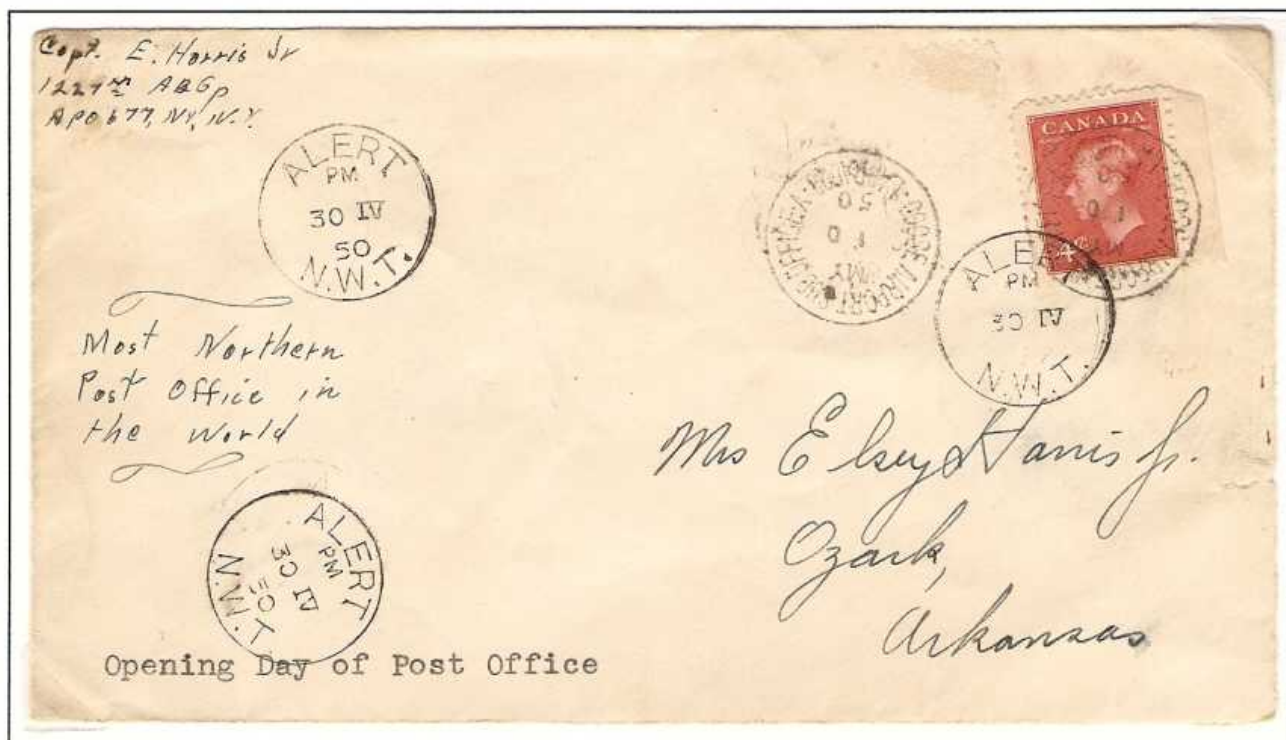
Changed Status: March 1, 1966

Changed to MPO (Military Post Office) 310: April 1, 1973

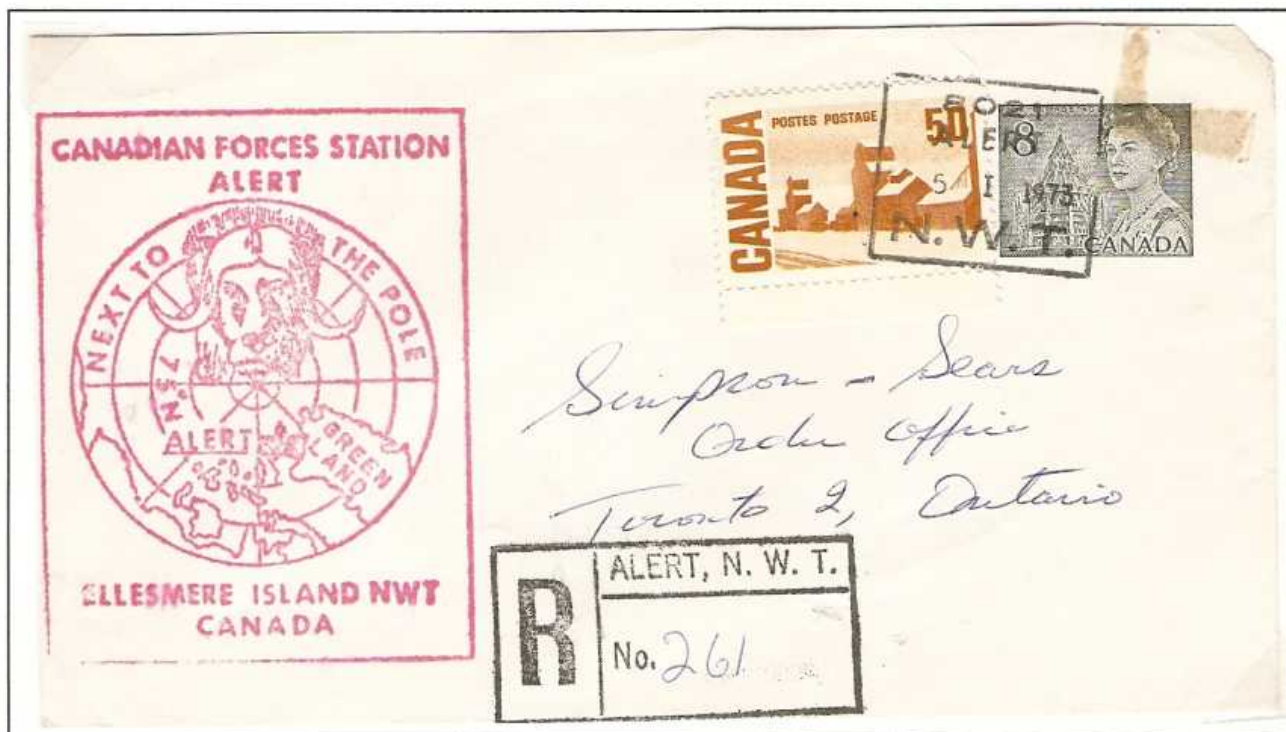
Money Order Office Number: 55308 (Non-Accounting)

Money Order Office Number: 8021 (Accounting)

Alert was the last of the High Arctic weather stations to be established. In the summer of 1948 some supplies were cached at nearby Cape Belknap. In March 1950 additional supplies were airlifted in the RCAF and US Air Force. In 1956 the RCAF built a hut just north of the weather station and added additional facilities to intercept Soviet communications during the Cold War. The post office opened as part of the weather station but was transferred to the military site on January 29, 1964. In 1970 it was proposed to change the Alert post office to a Military Post Office to allow for lower postal rates but this proposal was not accepted. When it was raised again in 1973, it was accepted. In 1978 most of the weather facilities were closed and personnel moved to the Canadian Forces Station.



Souvenir cover from the opening day of the Alert post office sent by a US Air Force serviceman likely involved in the initial airlift operations from Goose Bay.



Late commercial registered cover showing the MOON date stamp and registration box.

Alexandra Fiord

Sovereignty

Opened: September 3, 1953 (as Cape Herschel)

Money Order Office Number: 55350 (Non-Accounting)

Name Changed to Alexandra Fiord: February 5, 1955 (first use of Alexandra Fiord date stamps)

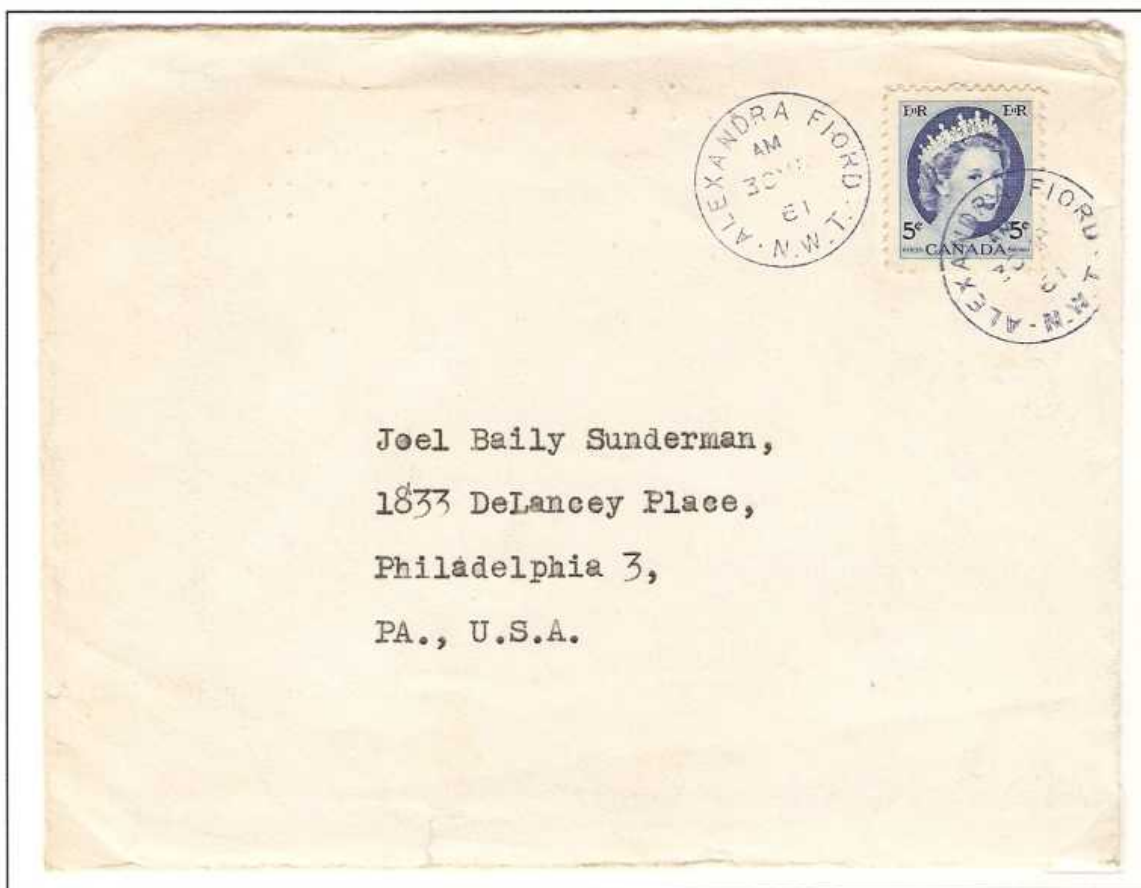
Closed: September 3, 1963

Supplies for a new RCMP detachment at Cape Herschel were put ashore at Alexandra Fiord, including the postal equipment reading 'Cape Herschel'. The Cape Herschel equipment was used until new equipment was received in the Christmas 1954 mail drop, but not put into use until February 5, 1955. The post was closed in 1963 but the buildings remain there and are used by researchers.



Earliest recorded use of the Alexandra Fiord registration box. Given that there is only one Cape Herschel registered cover known, this may be only the second registered item from this post office.

Cover showing the circle date stamp in blue.



MPO (Military Post Office) 310

Sovereignty

Opened: April 30, 1950 (as Alert)

Changed Status: March 1, 1966

Changed to MPO (Military Post Office) 310: April 1, 1973

Closed: June 11, 1999

Money Order Office Number: 55308 (Non-Accounting)

Money Order Office Number: 8021 (Accounting)

Post Office Computer Organization Number: 690023

In 1970 it was proposed to change the Alert post office to a Military Post Office to allow for lower postal rates but this proposal was not accepted. When it was raised again in 1973, it was accepted. Ironically, MPO 310 was closed on June 11, 1999 even though Canadian Forces Station Alert remains in operation, with a reduced staff complement of about 60.

Commercial registered cover showing latest recorded use of the first registration box. Although the cancel reads Belleville, Ontario MPO 310 was physically located at Canadian Forces Station Alert.



Cover showing the only recorded example of the second registration box used at MPO 310.

Cape Herschel

Sovereignty

Opened: September 3, 1953 (at Alexandra Fiord)

Money Order Office Number: 55350 (Non-Accounting)

Name Changed to Alexandra Fiord: February 5, 1955 (first use of Alexandra Fiord date stamps)

Canadian authorities wanted to re-establish a presence on eastern Ellesmere Island in 1952 to monitor activities of Greenlandic Inuit. A reconnaissance of the Cape Sabine area was cancelled as the Eastern Arctic Patrol ship was damaged by ice off Labrador in July 1952. A new settlement was proposed for Cape Herschel with relocated Inuit families from Pond Inlet and Port Harrison. In 1953 supplies were transferred from the Eastern Arctic Patrol ship *CD Howe* to the icebreaker *d'Iberville* in an effort to go to Cape Herschel but that site could not be reached. The supplies were put ashore at Alexandra Fiord, including the postal equipment reading 'Cape Herschel'. The Cape Herschel equipment was used at the new RCMP detachment at Alexandra Fiord until new equipment was received in the Christmas 1954 mail drop, but not used until February 5, 1955.



Only reported example of registration box.



Latest recorded use of the Cape Herschel circular date stamp.

APO 692 (Frobisher Bay)

Sovereignty

Opened: September 1942

Closed: October 31, 1949

Postal Concentration Center: New York, New York

Postal Concentration Center: March 1, 1944 Presque Isle, Maine

Postal Concentration Center: August 31, 1945 New York, New York

APO 692 served military and civilian personnel located at Frobisher Bay, NWT involved in the Crimson Project. The first date stamp does not appear to have arrived at APO 692 until May 1943.

Only recorded example of the first double circle cancel H1.

Airmail cover on Northeastern Airlines stationary as the civilian resupply contractor, sent by visiting medical doctor.

One of two reported examples of the H2 double showing the 20 cent fee for international mail in place Feb. 1, 1945 to Dec. 31, 1948.



Mrs. O. Reed Hill

00103

RECEIPT FOR REGISTERED ARTICLE No.

20 fee paid, class postage paid, 30 October, 1945

Declared value, \$ N.Y. Surcharge paid, \$

From Maj Gen Morgan, 1455 Union Ave. Montreal P.Q. Canada

Addressed to (Street and number) (Post office and State)

(Post office and State)

Accepting employee will place initials in spaces below, indicating restricted delivery

Return receipt fee in person or order Special delivery fee

Delivery restricted to addressee or order Postmaster, per



AIR MAIL

*Meredith K. Eick
1853 AACSS Sqdn (I & W)
APO 863 90 Plattsburgh
New York, New York*

*Mr. B. M. Shriver
Tech Rep Division
22nd & Lehigh
Philadelphia 32
Pennsylvania*

NORTHEAST AIRLINES



CONNECTION MASSACHUSETTS

*Maj Gen O. B. Hill, M.C.,
A.P.O. # 677,
Presque Isle, Maine -
U.S. ARMY -*

*Censored
Maj Gen O. B. Hill*

Airmail cover 18 days before APO 692 closed (latest recorded use). Note return address of APO 863 (Argentia, Newfoundland) to which mail for Frobisher Bay was then directed.

APO 693 (Southampton Island)

Sovereignty

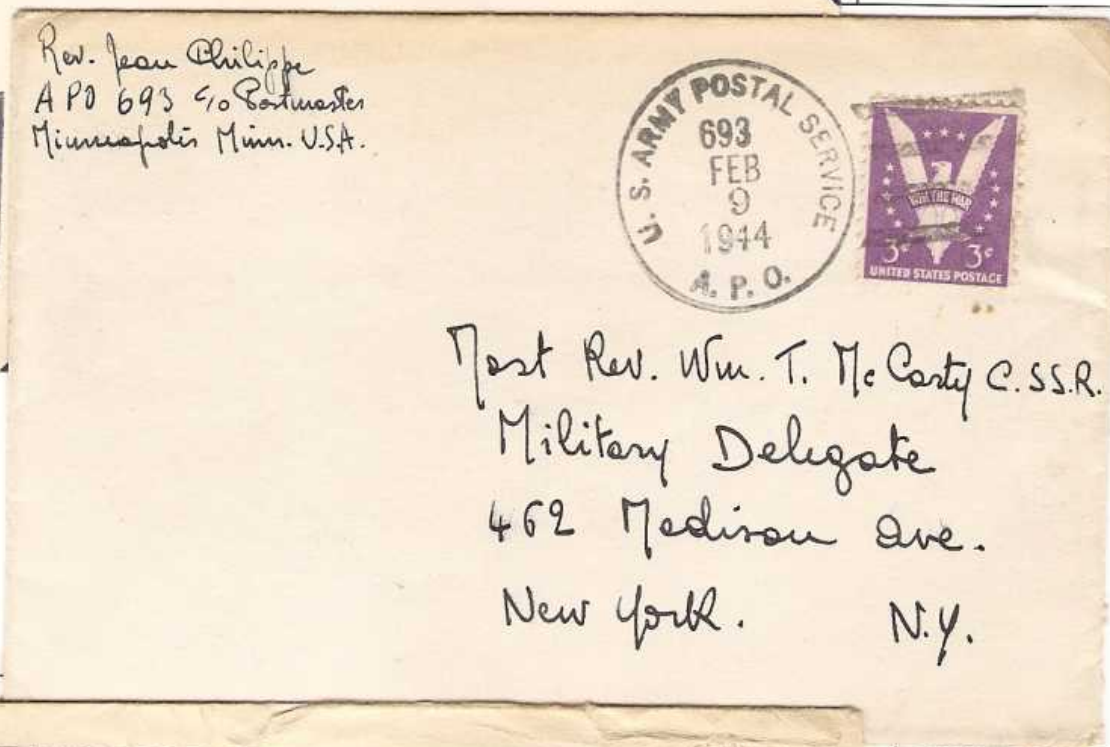
Opened: February 1943
Closed: August 31, 1945

Postal Concentration Center: New York, New York
Postal Concentration Center: February 1, 1944 Minneapolis, Minnesota

APO 693 served military and civilian personnel located at Southampton Island, NWT involved in the Crimson Project. The air base was located about 9 km northwest of a Hudson's Bay Company post established in 1924. The facility was transferred to Canada in 1945.



Free franked cover with earliest reported use of date stamp D1 (no number in cancel).



Surface letter rate cover from Jean Philippe (1901-2001), a Catholic priest at nearby Coral Harbour on Southampton Island where a mission was established in 1926.



Only reported example of double circle cancel on an registered airmail cover showing a transport through APO 737 at Churchill, Manitoba. The 20 cent registry fee was in effect March 26, 1944 to December 31 1948.

APO 4880 (Padloping Island)

Sovereignty

Opened: August 1943
Closed: April 1947

Postal Concentration Center: New York, New York
Postal Concentration Center: April 1, 1944 Presque Isle, Maine
Postal Concentration Center: September 1, 1945 New York, New York

APO 4880 served military and civilian personnel located at Padloping Island, NWT (also known as Crystal III) involved in the Crimson Project. The APO started off as a temporary mailing address but was retained. No date stamps appear to have been used at Padloping Island and mail was forwarded through APO 692 for date stamping. Censor marking 983 is known used on photos from this site but not yet reported on mail.

Although a full scale air base was originally planned at this site, only a weather and radio station were established to support operations of the Crimson Project. The facilities were operated until July 1950 and then reopened January 1951 to support operations at Thule, Greenland. The Canadian Navy took over the site in the summer of 1955.

Only recorded cover from APO 4880.



Airmail cover from Padloping Island forwarded through APO 692 at Frobisher Bay.

APO 677 Unit 1 (Frobisher Bay)

Sovereignty

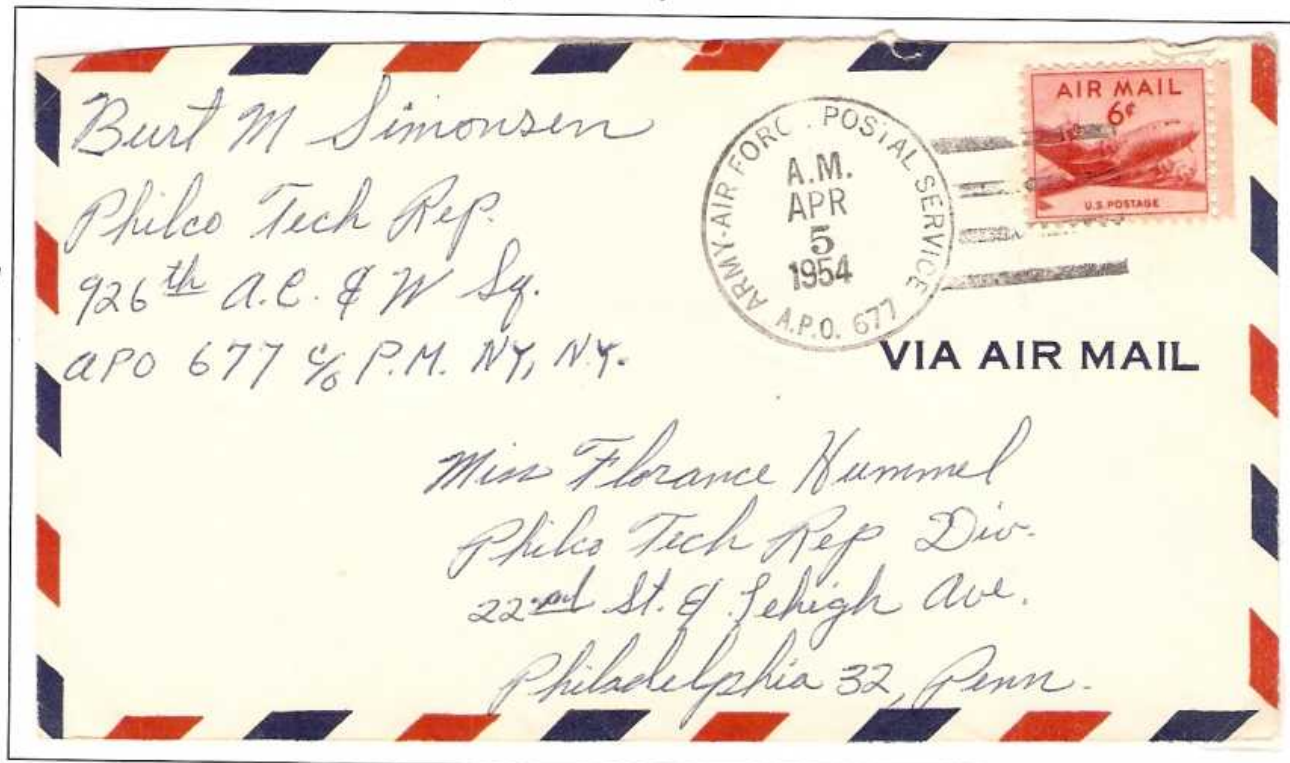
Opened: 1954?
Closed: March 1955?

Postal Concentration Center: New York, New York

A Pinetree radar site was built at Frobisher Bay on a high ridge north about 3 km north of the airbase in 1952 and began operations in December 1953. The Polevault communications system was added in 1954. These facilities became known as the Upper Base and the original airfield site was then called the Lower Base.

APO 677 originally opened at Goose Bay, Labrador in 1942 while Unit 1 appears to have served US military activities as Frobisher Bay between the closing of APO 692 in 1949 and the opening of APO 863 in 1955. It is not clear if it was located at the Upper or Lower Base. A duplex killer D1 and double circle H1 date stamp were used by this unit.

The 926th Air Control and Warning Squadron served the Pinetree radar site. Earliest reported use of D1.



Cover from Detachment 4, 6th Postal Squadron showing latest reported use of D1 date stamp.



APO 863 (Frobisher Bay)

Sovereignty

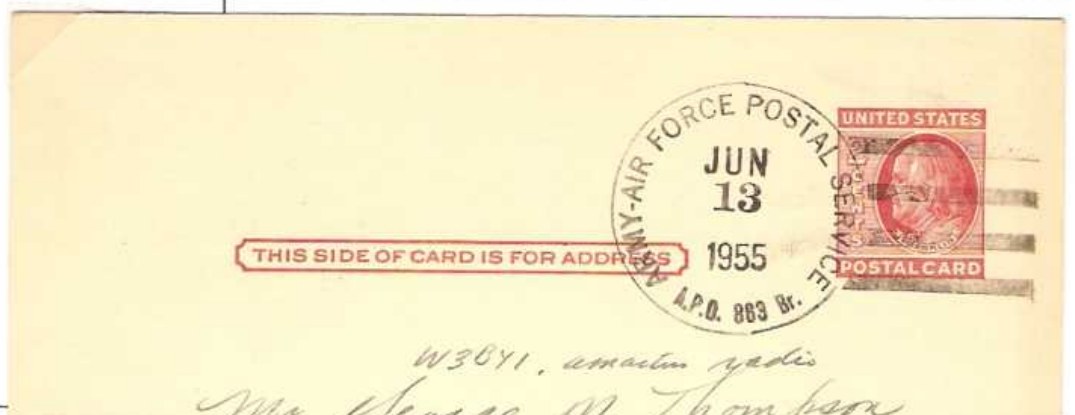
Opened: April 6, 1955
Closed: September 30, 1958

Postal Concentration Center: New York, New York

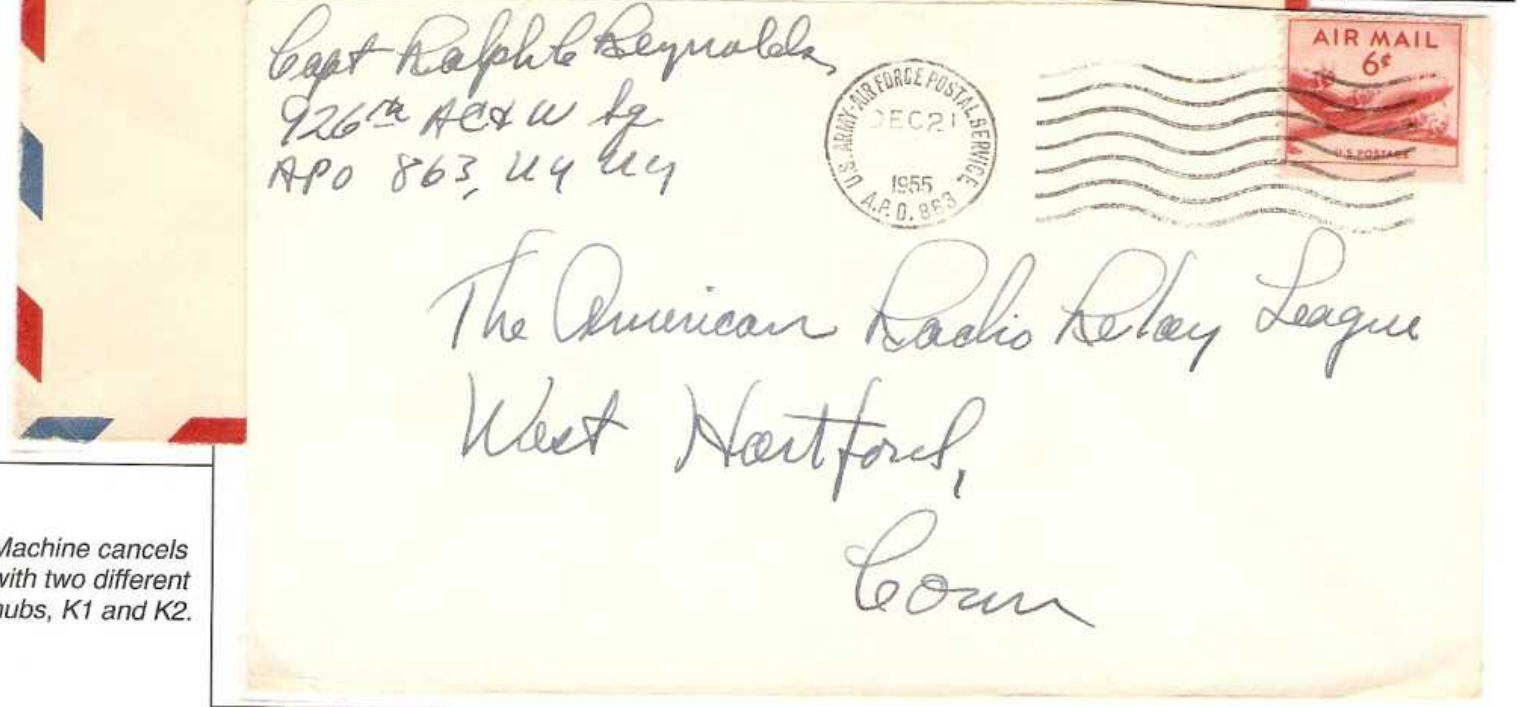
APO 863 originally opened at Argentia, Newfoundland but closed in 1955 as US Army-Air Force operations wound down there. Frobisher Bay served as a staging area for construction of the Distant Early Warning (DEW) Line radar stations in the Eastern Arctic and APO 863 was transferred to serve the growing military presence on Baffin Island and appears to have replaced APO 677 Unit 1.

Earliest reported use of date stamp D1 at Frobisher Bay (previously used at Argentia).

Date stamp D2 with Br. (Branch), later cut out.



*F.L. Spangler Capt MC
 1402 EAB Co C
 APO 863, N.Y. N.Y.*



*The American Radio Relay League
 West Hartford,
 Conn*

Machine cancels with two different hubs, K1 and K2.

APO 677 Unit 5 (Frobisher Bay)

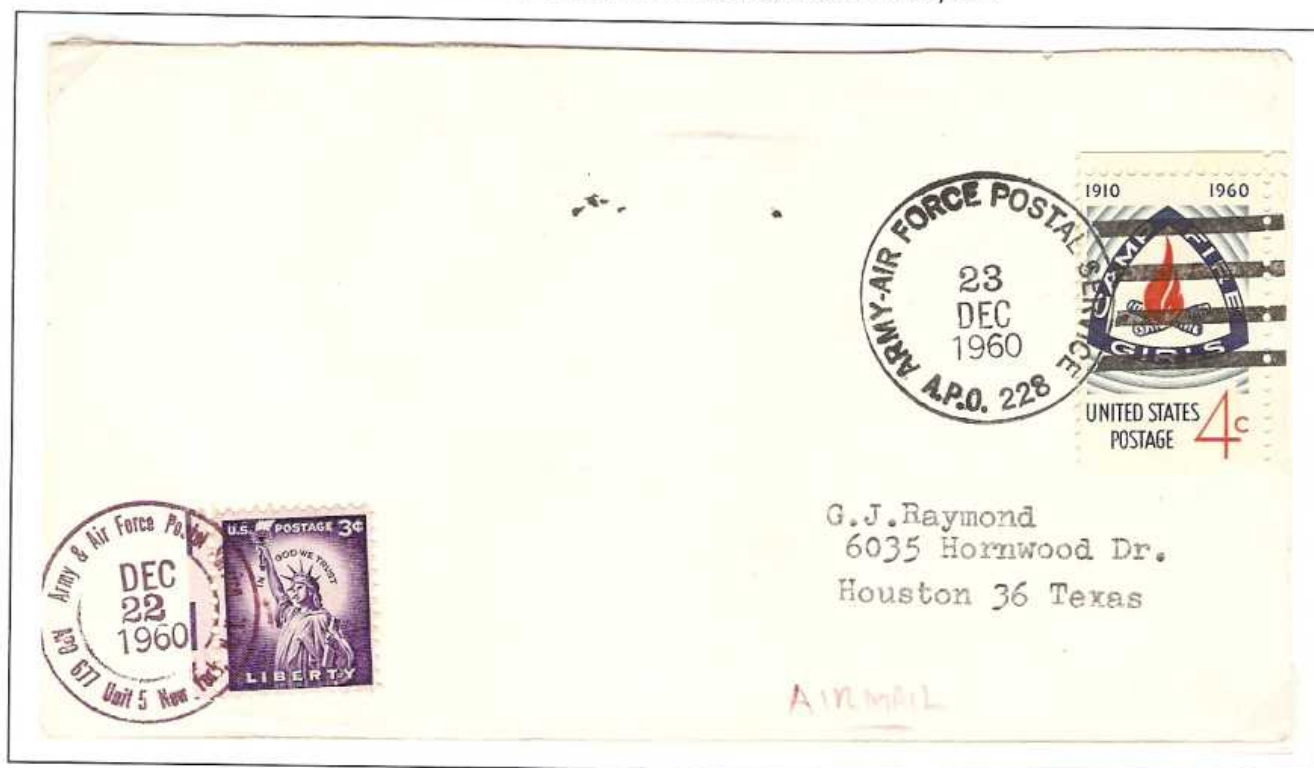
Sovereignty

Following the construction boom for the DEW Line, APO 863 was replaced by a unit of APO 677. It used its own distinctive date stamps D1 and H1. The APO 677 Units appear to have been assigned to Pinetree radar sites as follows:

Aircraft Control and Warning Squadron	APO 677 Unit	New APO #	New APO Dates of Operation	Location
920 th	1	432	July 1, 1959-November 1961?	Resolution Island, NWT
922 nd	2	434	July 1, 1959-June 30, 1968	Cartwright, Labrador
923 rd	3	434	July 1, 1959-June 30, 1968	Hopedale, Labrador
924 th	4	439	July 1, 1959-September 15, 1970	Saglek, Labrador
926 th	5	440	July 1, 1959-August 15, 1960	Frobisher Bay, NWT
		228	July 1, 1960-August 24, 1963	



APO 677 Unit 5 used its own distinctive date stamp D1.



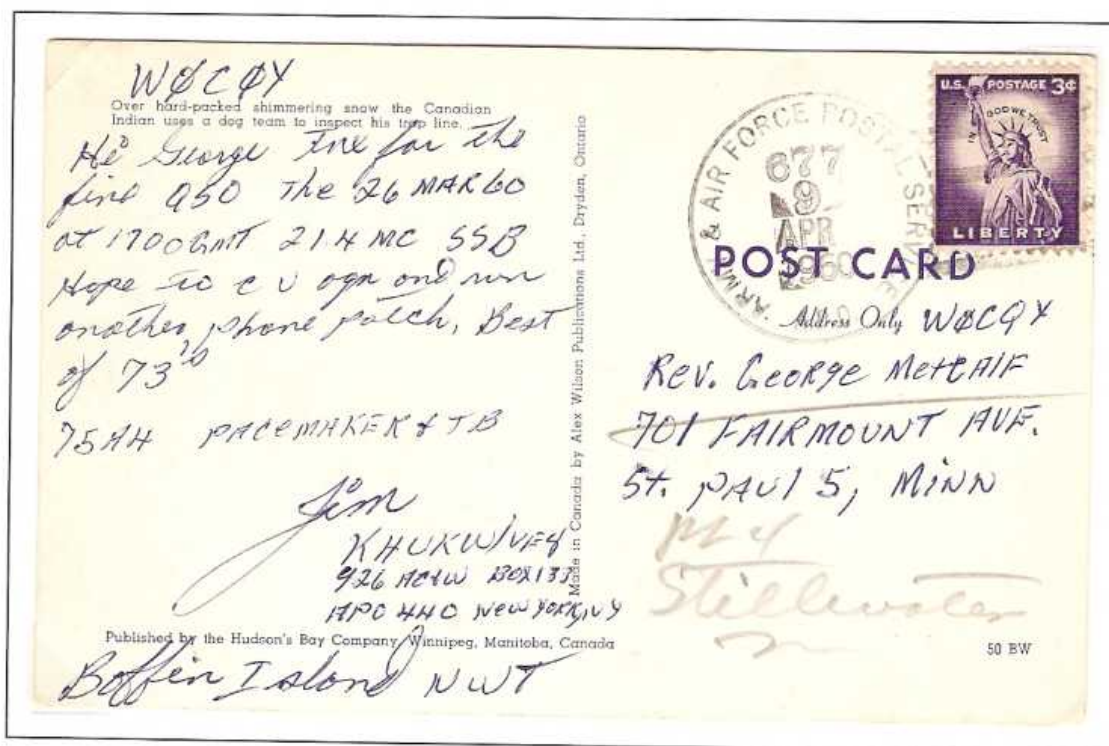
Note use of APO 228 duplex killer D1 and late use of APO 677 Unit 5 H1 showing relationship between these offices.

Opened: July 1, 1959
Closed: August 15, 1960

Postal Concentration Center: New York, New York

APO 440 appears to have served as a mailing address only for the Pinetree radar site at Frobisher Bay and perhaps for other military units in the area. No separate date stamps were prepared as the APO 677 Unit 5 date stamps continued in use. While the other Pinetree radar sites in nearby Labrador received their own date stamps (APO 433, 434 and 439), the two in the NWT did not (APO 432 and 440) as these sites closed on November 1, 1961 and most military personnel were withdrawn, leaving the Polevault communications facilities to civilian contractor, the Canadian Marconi Company. This facility operated until 1974.

Scarce item showing use of the mailing address only APO 440 in period.



Post card showing use of the APO 677 Unit 5 duplex killer D1 but with proper return address of APO 440 for the 926th Aircraft Control and Warning Squadron at the Pinetree radar site in Frobisher Bay, NWT.

APO 228 (Frobisher Bay)

Sovereignty

Opened: July 1, 1960
Closed: August 24, 1963

Postal Concentration Center: New York, New York

In 1957 the Frobisher Bay airbase was transferred from the Northeast Service Command to the Strategic Air Command for servicing long-range bombers. An in-flight refueling base was added in 1959 after the airfield was lengthened for international flights. A large building was constructed to the east of the new runway and housed operational offices including APO 228. The facility closed and the large building was turned over to Canadian authorities in 1963. APO 228 also served other US military facilities in the area.

Radio post card from a member of the Pinetree radar site staff at Frobisher Bay showing use of date stamp D1.

Radio post card from a member of the Pinetree radar site staff at Frobisher Bay showing use of date stamp D1.

Hello *Mike*, This confirms our QSO of *7 May 1961* at *1810* AST on *14.3* Meters *2055B* 5/4
 U-Tone CW sigs RST

Transmitter: *Innady TB* Watts Input: *15W*
 Antenna: *Tri Band Hi Th*
 Receiver: *75A-4*
 Remarks: *Thanks for the good report on the Innady*
 PSE QSL TNX

73, *May* Opr.

ARMY-AIR FORCE POSTAL SERVICE
 11 MAY 1961
 APO 228

U.S. POSTAGE
 5c

K 8 A U L
22415 Madison av.
St. Clair Shores
Michigan

DX CARDS, 2 KULIK ST., CLIFTON, N. J.

Ray Neetzel
 PHOTOGRAPHER
 629 ALDINE STREET
 ST. PAUL 4, MINNESOTA

SAINT PAUL
 MAR 5
 4 PM
 1963
 MINN.

FIGHT TB
 SUPPORT TOUR
 TB ASSOCIATION

5c U.S. POSTAGE

Returned to Writer

NO RECORDS
 APO 228, NY

DATE 8 April 70

Mr Robinder
 APO 432 864
 Heildlebero Germany
 New York New York

NO RECORDS
 APO 228, NY

DATE 8 April 70

8 APR 1963 D
 10 APR 1963 H
 13 APR 1963
 15 APR 1963
 17 APR 1963

ARMY-AIR FORCE POSTAL SERVICE
 18 APR 1963
 APO 228

Commercial mail addressed to APO 432 (at Resolution Island, NWT) but closed in November 1961 so sent to nearby APO 228 at Frobisher Bay. No record of the recipient at APO 228 where it appears to have been held for 10 days before forwarding to APO 864 (Stephenville, Newfoundland) before being returned to sender. Latest reported use of the APO 228 D1 date stamp.

APO 677 Unit 1 (Resolution Island)

Sovereignty

The the Resolution Island, NWT Pinetree radar site about 320 km southeast of Frobisher Bay and went into operation in November 1953 and closed on November 1, 1961. APO 677 at Goose Bay, Labrador appears to have served the Pinetree site at Resolution Island. The site was served by both Goose Bay and Frobisher Bay with air resupply. Units of APO 677 were assigned to the Pinetree sites as follows:

Aircraft Control and Warning Squadron	APO 677 Unit	New APO #	New APO Dates of Operation	Location
920 th	1	432	July 1, 1959-November 1961?	Resolution Island, NWT
922 nd	2	434	July 1, 1959-June 30, 1968	Cartwright, Labrador
923 rd	3	434	July 1, 1959-June 30, 1968	Hopedale, Labrador
924 th	4	439	July 1, 1959-September 15, 1970	Saglek, Labrador
926 th	5	440	July 1, 1959-August 15, 1960	Frobisher Bay, NWT
		228	July 1, 1960-August 24, 1963	



Resolution Island, N.W.T. Canada

1876th Radio Relay Squadron
 c-o 920th AC&W Squadron
 APO 677, New York, N.Y.

Just as with the Frobisher Bay Pinetree site, there was a unit of APO 677 at Resolution Island that had its own distinctive duplex killer D1 and double circle H1. This post card shows APO 677 Unit 1 D1. It is from a serviceman assigned to the Polevault communication facility.

Opened: July 1, 1959
Closed: November 1961?

Postal Concentration Center: New York, New York

APO 432 appears to have served as a mailing address only for the Pinetree radar site at Resolution Island, NWT. Separate date stamps were prepared for the APO 677 Unit 1 and continued in use. While the other Pinetree radar sites in nearby Labrador received their own date stamps (APO 433, 434 and 439), the two in the NWT did not (APO 432 and 440) as these sites closed on November 1, 1961 and most military personnel left, leaving the Polevault communications facilities to civilian contractor, the Canadian Marconi Company. This facility operated until August 1975.

RESOLUTION ISLAND, N. W. T., CANADA

920th AC&W Sqdn., APO 432, New York, New York

K 6 I N F / V E 8

STATION	DATE	TIME	R	S	T	FREQUENCY
K4AIM	11/10/59	1820	5	9		1429

TRANSMITTER:

ANTENNA:

RECEIVER:

PACEMAKER/THUNDERBOLT

DIPOLE

75A4

REMARKS:

TNK DON FOR NICE CONTACTS

2 W 55B
PSE QSL, TNX

73, Bill

GEORGE
Rd
Hills, Mass.



G-15

Radio cards from the Pinetree radar site at Resolution Island, NWT cancelled with APO 677 Unit 1 date stamp D1 but showing APO 432 in the return address.



Printed matter rated philatelic cover sent from Resolution Island using the old APO 677 Unit 1 H1 double circle cancel dated October 15 with no year date. Date stamp probably meant to read October 15, 1961 as the Pinetree site closed on November 1, 1961. Docketing on back indicates the item was received in November 1963.

BFPO 625 (Borup Fiord)

Opened: May 15, 1988

Closed: August 22, 1988

Sovereignty

British Forces Post Office 625 was part of the Joint Services Expedition to Borup Fiord, Ellesmere Island in the summer of 1988. This seventeen-person group were flown from Lyneham, UK to Thule, Greenland on May 9-12 in an RAF Hercules, via Keflavik, St. John's, and Resolute. A Drop Zone crew were left in Resolute and landed near the proposed base camp on May 11. The remaining expedition members were flown from Thule to Borup Fiord where most of the supplies were air dropped before the aircraft headed to Eureka. The expedition members were then flown to Borup Fiord from Eureka. A number of scientific investigations were carried out. A post office was set up in the corner of Flight Lieutenant K. W. (Bill) Hankinson's tent. The final group of expedition members left the base camp on August 22, 1988 by boat to Atkinson Point where they were picked up in a Twin Otter two days later for Eureka. On August 30 the group was picked up in Eureka by a DC3 which flew them to Resolute where an RAF Hercules took them back to the UK on September 4.



Mr. H. E. J. Evans
Polar Postal Hist. Soc. G.B.
12 Longlands Spinney
Charmdean
Worthing, Sussex BN14 9NU
England



H. H. Parker
H. H. PARKER
Lieutenant Royal Navy

Mr. Hankinson



Two covers posted on the opening and closing dates of BFPO 625. All regular mail was handled through the Polar Continental Shelf Project in Resolute. There were 281 philatelic covers created to assist with fundraising efforts for the expedition.

Great Bear Lake

Substances

Opened: December 1, 1932

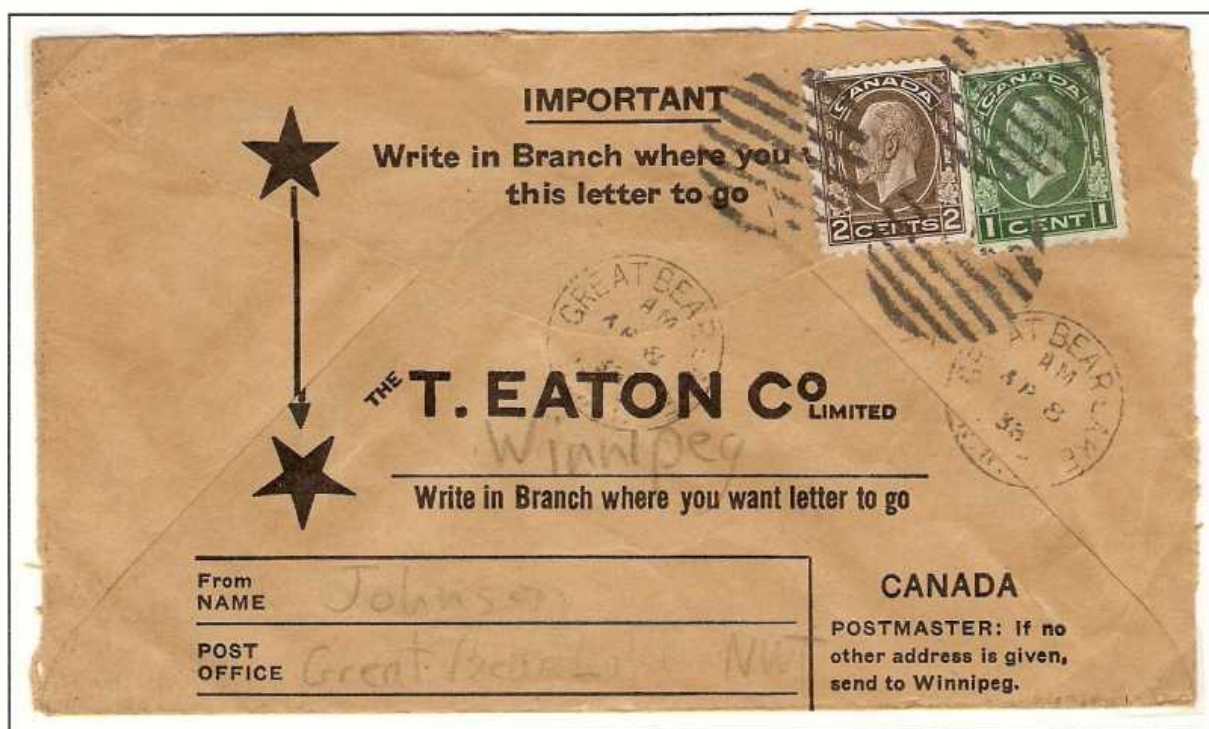
Money Order Office Number: 55335 (Non-Accounting)

Changed Name to Cameron Bay: May 1, 1933

In 1930 mineral claims were staked covering a cobalt bloom at Echo Bay on Great Bear Lake. A general store opened at nearby Cameron Bay in 1932 to serve the prospectors travelling in the area. A post office opened at this site but mail for other points on Great Bear Lake (Fort Franklin) was misdirected to the Great Bear Lake post office at Cameron Bay. The Department of Interior suggested the name be changed to Cameron Bay and this proposal was accepted.



Registered first official first flight cover showing the use of the special registration box used only on cacheted covers.



Commercial cover showing the latest recorded use of the Great Bear Lake circle date stamp. Only three covers have been reported from dates other than the first flight.

Cameron Bay

Substances

Opened: December 1, 1932 (as Great Bear Lake)
 Changed Name to Cameron Bay: May 1, 1933
 Changed Status: December 1, 1934
 Changed Name to Port Radium: December 1, 1937
 Closed: August 22, 1940

Money Order Office Number: 55335 (Non-Accounting)

Money Order Office Number: 8216 (Accounting)

Money Order Office Number: 8783 (Accounting)

A general store opened at Cameron Bay in 1932 to serve the prospectors travelling in the area. The post office was opened as Great Bear Lake. To help prevent misdirected mail for other places on Great Bear Lake, the name was changed to Cameron Bay in 1933. In 1937 the residents requested a name change to Radium City to reflect the nearby mining operation that extracted radium from the ore. The Post Office Department accepted this proposal and new postal equipment was prepared but the Canadian Geographic Board would not approve this new name. The Post Office Department proposed the name Port Radium which was accepted. When the nearby Eldorado Mine closed in 1940 most of the people left the area and the post office at Cameron Bay was closed.

Earliest of two recorded commercial registered covers from Cameron Bay.



Cover showing the scarce duplex date stamp.

Port Radium

Substances

Opened: December 1, 1932 (as Great Bear Lake)
Changed Name to Cameron Bay: May 1, 1933
Changed Status: December 1, 1934
Changed Name to Port Radium: December 1, 1937
Closed: August 22, 1940

Money Order Office Number: 55335 (Non-Accounting)

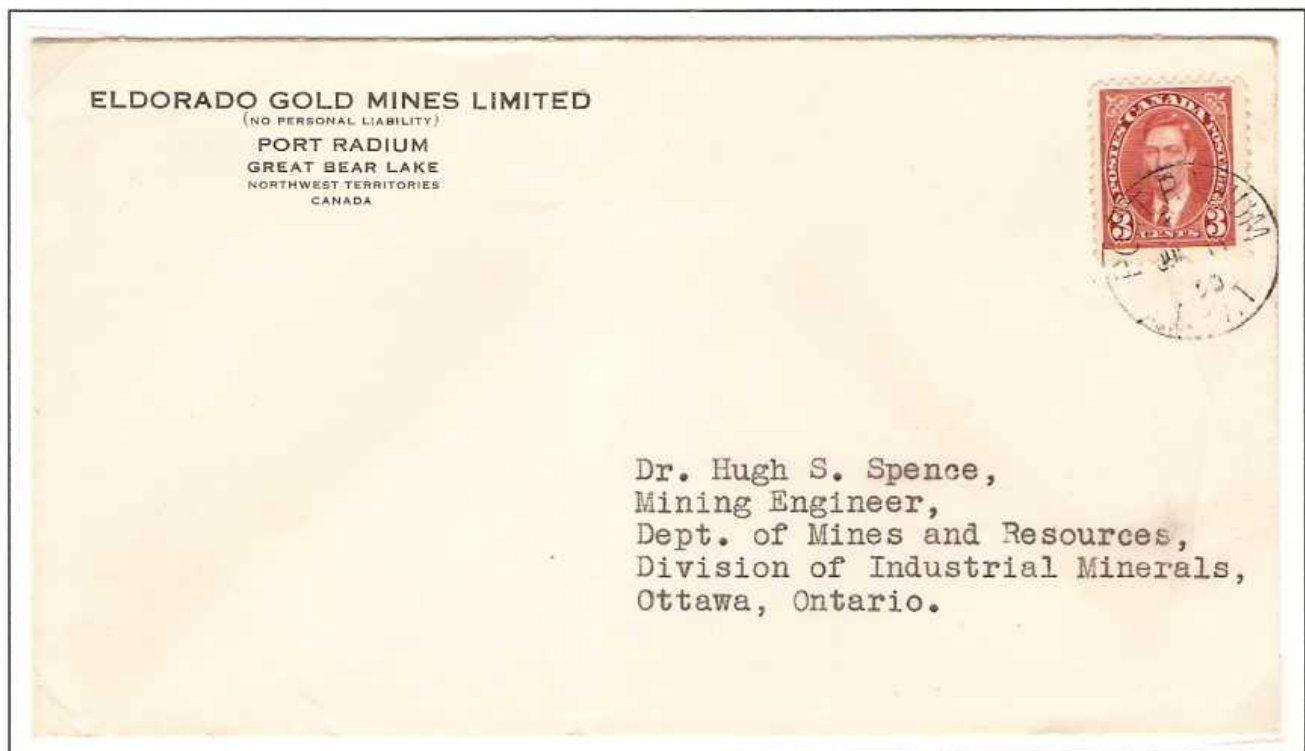
Money Order Office Number: 8216 (Accounting)

Money Order Office Number: 8783 (Accounting)

A general store opened at Cameron Bay in 1932 to serve the prospectors travelling in the area. The post office was originally named Great Bear Lake. To help prevent misdirected mail for other places on Great Bear Lake, the name was changed to Cameron Bay in 1933. In 1937 at the request of residents, the name was change again to Port Radium. When the nearby Eldorado Mine closed in 1940 most of the people left the area and the post office was also closed.



The first registered item from Port Radium following the name change.



Commercial cover from the nearby Eldorado radium mine.

Camsell River

Substances

Opened: December 5, 1933
Closed: August 11, 1935

Money Order Office Number: 55345 (Non-Accounting)

Following the discovery of radium at Great Bear Lake, intense mineral exploration began throughout the whole region. Mineral claims were staked along the Camsell River about 55km to the south. White Eagle Silver Mines acquired some of these properties and began underground development in 1933. The property was abandoned in 1935 although it went into production in the 1970s.



Camsell River became a stop on the flights up to Cameron Bay in December 1933. This first flight cover shows the special circle date stamp and registration box used only on the cacheted covers.



Scarce commercial cover showing the circle date stamp from a non-first flight date. Sent by a mine employee.

Camlaren

Substances

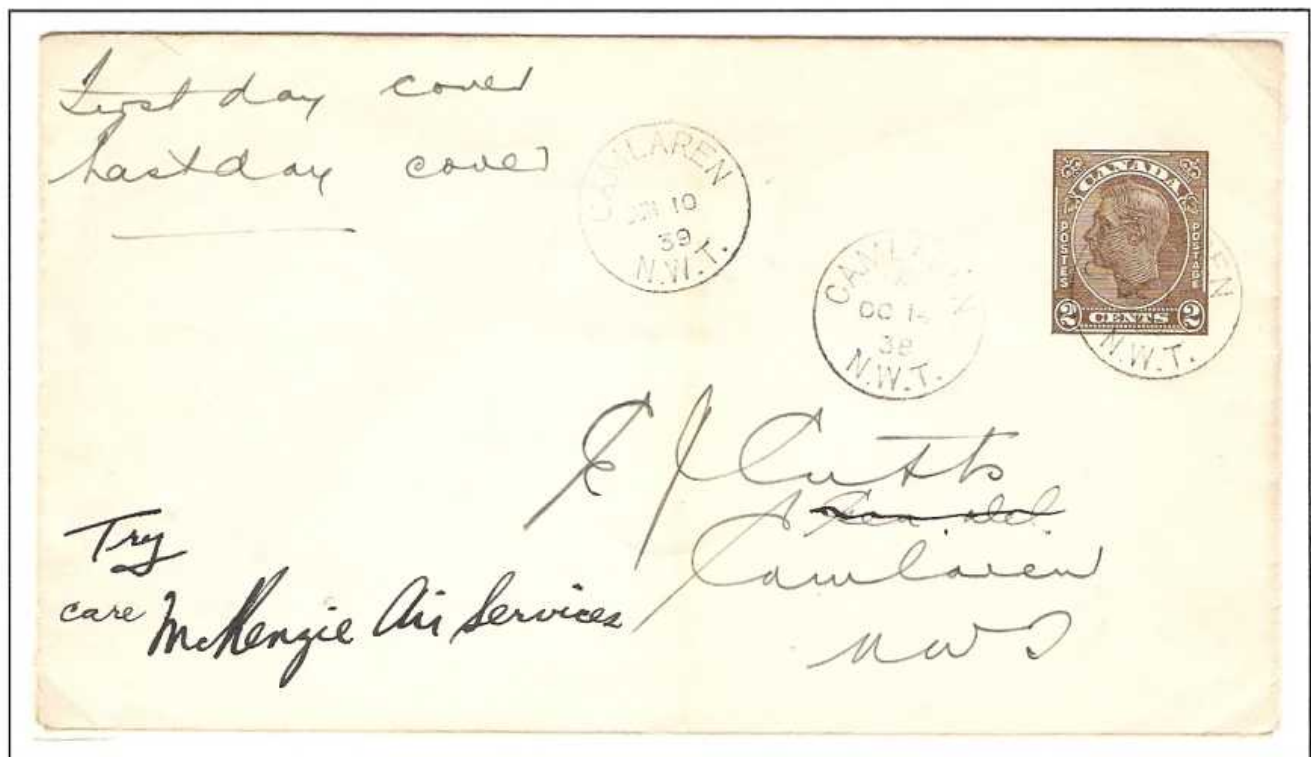
Opened: October 17, 1938
Closed: June 10, 1939

Money Order Office Number: 55340 (Non-Accounting)

Gold was discovered in the Yellowknife area in the early 1930s following the exploration boom at Great Bear Lake. In the summer of 1937 mineral claims were staked on islands in Gordon Lake, about 85 km northeast of Yellowknife. Camlaren Mines was organized to develop this property, named after the two discoverers Don Cameron and Ian McLaren. Extensive underground work was completed but all work stopped in December 1939. The property went into production in 1962-63 and 1979-81.



Only two reported items from Camlaren. Addressed to two Post Office Department inspectors who served in Edmonton. While the covers show the Camlaren circle date stamp, the first day cancel is obviously backdated as it shows the proposed opening date of October 14 not the actual date of October 17, 1938. There is also the dent in the rim above the second 'A' at top that did not happen until after February 1939.



Outpost Island

Substances

Opened: June 16, 1941
Closed: September 30, 1942

Money Order Office Number: 55530 (Non-Accounting)

In 1935 mineral claims were staked on the Outpost Islands to cover a gold and tungsten deposit. Gold production began in December 1940 by Slave Lake Gold Mines. Tungsten became the focus in May 1941 and the mine was reorganized under International Tungsten Mines in May 1942. Shortages of employees and equipment coupled with financial problems caused the mine to close on August 1, 1942 stranding the employees on site. Some of the workers built their own barge to escape and the last employees left in late September by plane. The property went into production again in 1951-52 but without its own post office.



One of two registered covers showing Foreign Exchange Control Board review and US civilian censorship.



Latest reported use of the circle date stamp.

Port Radium

Opened: August 1, 1942
 Changed Status: July 1, 1945
 Changed Status: October 3, 1960
 Closed: January 30, 1961
 Reopened: March 14, 1969
 Change of Status: April 1, 1973
 Closed: March 31, 1982

Substances

Money Order Office Number: 55569 (Non-Accounting)
 Money Order Office Number: 8783 (Accounting)
 Money Order Office Number: 55569 (Non-Accounting)

Money Order Office Number: 8783 (Accounting)
 Post Office Computer Organization Number: 690287

The Eldorado Mine reopened in 1942 to produce uranium. It stopped production in 1960 and post office closed shortly afterwards. Echo Bay Mines opened a nearby silver deposit in 1964. It purchased the townsite in 1966 and the community sprang back to life and the post office reopened at the mine. The Eldorado mine was reopened for silver in 1976 but closed in 1981.

Double rated registered cover showing latest recorded use of the third registration box and second MOTO date stamp.

ELDORADO

MINING AND REFINING (1944) LIMITED

PORT RADIUM, NORTHWEST TERRITORIES

MRS. R. DONALD
 Box 160
 EDMONTON ALTA.



*Passmore's Textile Mill and Store,
 Mail Order Dept.,
 Box 118
 Woodstock, Ontario.*

The circle date stamp used during the second period.

Registered last day cover showing the POCON and second circle date stamp used during the final period.

O. H. M. S.

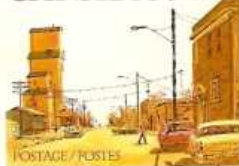
The CL
 YELLOW

690287

31 3 1982

PORT RADIUM
 N T

CANADA 50



Canada



31 3 1982
 PORT RADIUM
 N T

KEVIN O'REILLY,
 474 SOUTHLAND CRES
 OAKVILLE, ONTARIO
 L6L 3N8

Canol

Substances

Opened: November 23, 1942
Closed: March 1, 1945

Money Order Office Number: 8219 (Accounting, but intended as Non-Accounting 55347)



Following the Japanese invasion of the Aleutian Islands in early 1942, the US wanted a secure supply of oil for Alaskan defences. Canada agreed to provide oil from Norman Wells to Whitehorse, Yukon and on to Alaska through a series of pipelines. The centre of construction for the eastern part of the pipeline was Canol, opposite Norman Wells on the Mackenzie River. The post office started at the main camp near the river but was moved inland about 6 km in summer of 1943. The pipeline was completed in February 1944 and the project was abandoned before the spring of 1945.

Scarce registered double rated airmail cover from the main contractor on the Canol Project.



The only two reported examples of the Canol MOTO cancel.

APO 999 (Fort Smith)

Substances

Opened: June 24, 1942 Waterways, Alberta
Moved: October 1942 Edmonton, Alberta
Moved: May 1943 Fort Smith, NWT
Moved: November 1943 Waterways, Alberta
Moved: April 1944 Norman Wells, NWT
Closed: December 31, 1944

Postal Concentration Center: Seattle, Washington
Postal Concentration Center: April 1, 1944 Minneapolis, Minnesota

Unit 1—August 12, 1942 to ?, possibly at Canol, NWT
 reopened April to July 1944 at Canol and also known as 999-S
Unit 2—October 5, 1942 to ?, possibly at Norman Wells, NWT

APO (Army Post Office) 999 was established to support American military units involved in the Canol Project. This office was relocated several times reflecting the seasonal and operational changes in logistics, including locations in the NWT.

Return address of
 APO 473-R
 (Norman Wells).
 Note "999" appears
 in the APO cancel,
 D3 date stamp.

One of two
 reported examples
 of H1 double circle
 cancel as transit
 marking on
 redirected cover.

*Lt C S Lecky O-1844397
 Special Service Headquarters
 APO 473-R Postmaster
 Seattle, Wash.*



Free

*Mrs. Bernice L. Hughes
 208 Highland Street*

*Cpl M. A. Harky 17166657
 16th Weather Det.
 APO 999
 Minneapolis, Minn.*



Free

g named g ministers Hund, m

*Floyd R. Ward, Capt. W
 Station Hosp.
 APO 999 Sep 'A'
 808 M, Seattle, Wash.*



Carl M. Becker

7 No. 7th St.

Minneapolis, Minn.

Floyd R. Ward

D5 date stamp on
 cover from residual
 US Army unit at
 Norman Wells, NWT
 in August 1944.

US Army unit in
 transit from Canol,
 NWT to Waterways,
 Alberta (Group A).
 D4 date stamp with
 curved killer bars,
 small numbers.

APO 999-S or Unit 1 (Canol)

Substances

Unit 1—August 12, 1942 to ?, possibly at Canol, NWT reopened April to July 1944 at Canol and also known as 999-S

Only reported example of H1 double circle cancel as transit marking on redirected cover.



US Army unit at Canol, NWT. Note broken "A.P." at bottom of cancel, different than other cancel used at APO 999.

APO 999 Unit 2 (Norman Wells)

Substances

Unit 2—October 5, 1942 to ?, possibly at Norman Wells, NWT

Double circle cancel and return address.



Only reported example of H1 double circle cancel.



Cover from a US serviceman with an Army unit stationed at Canol, NWT.

APO 473 (Canol)

Substances

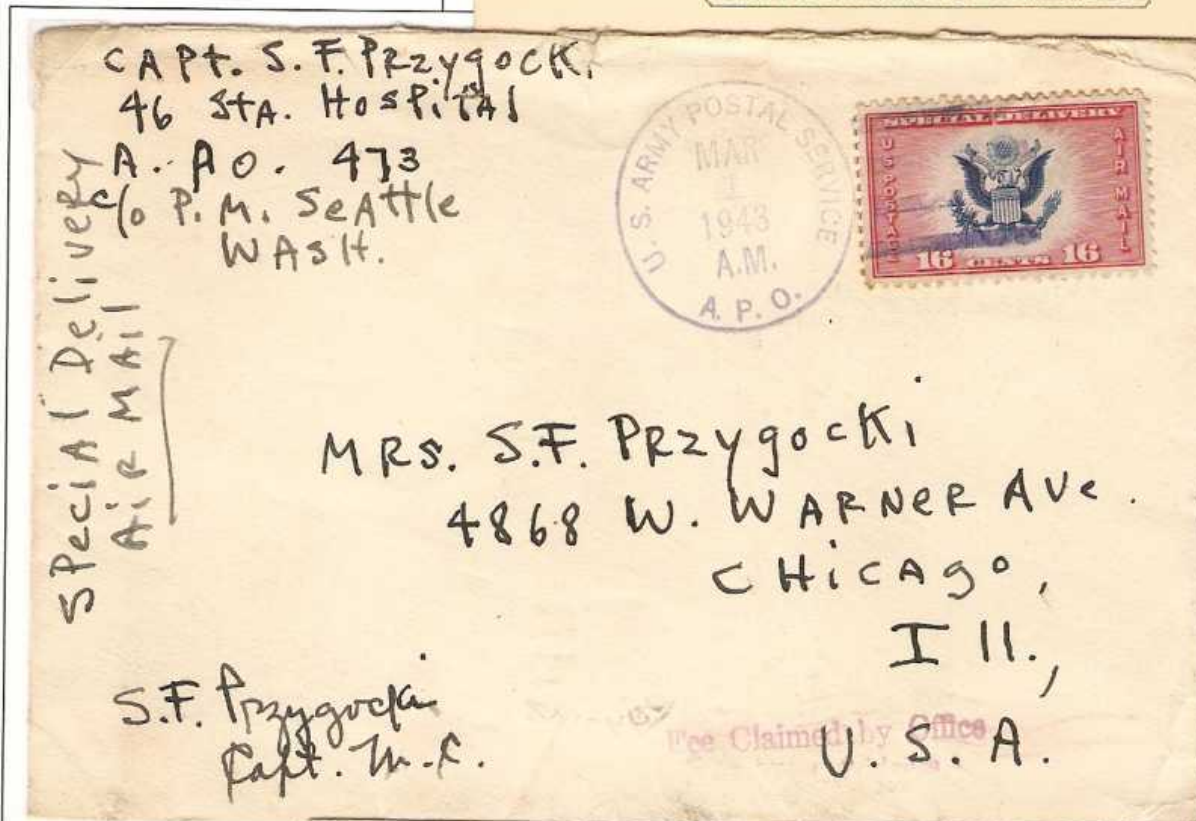
Opened: January 8, 1943 Canol, NWT
Closed: September 15, 1943

Postal Concentration Center: Seattle, Washington

Unit 1—March 1943 to ?, possibly at Norman Wells, NWT

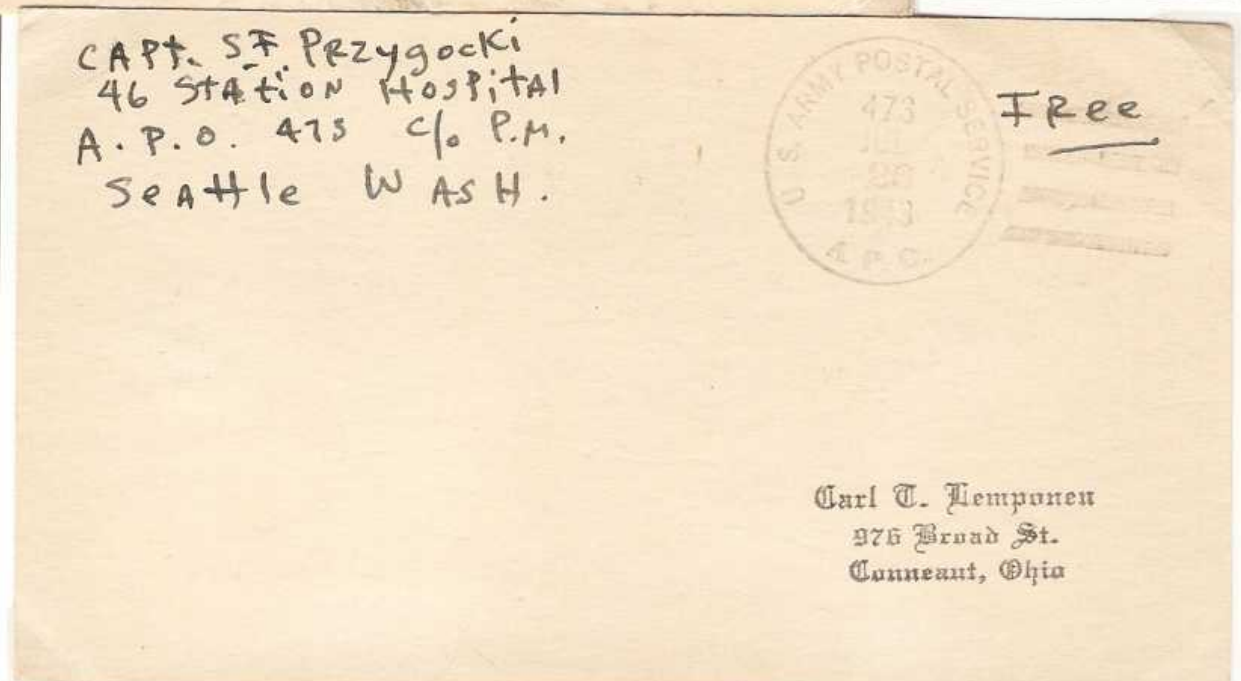
APO 473 served military and civilian personnel located at Canol, NWT involved in the Canol Project. "Group S" also used to indicate this location. Bottom cover shows use of D1 date stamp with no number.

Proof strike of H1 double circle cancel made by Army Postal Service employee in Edmonton.



Special Delivery
Airmail from US
Army unit at Canol,
NWT. Self-
censored by
officer.

Date stamp D2 with
number in the cancel.
Free franked post card.



Carl T. Kemponen
976 Broad St.
Conneaut, Ohio

APO 473 Unit 1 (Norman Wells)

Substances

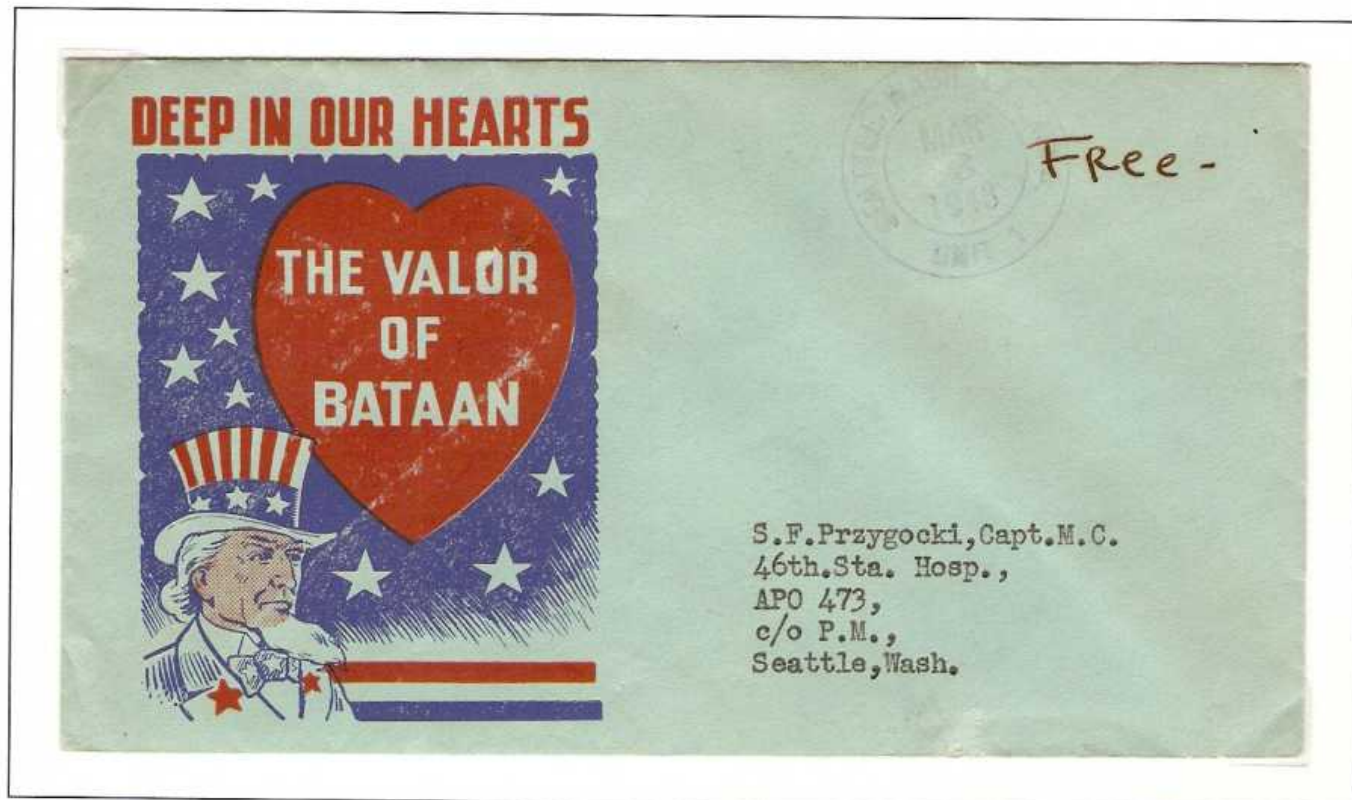
Opened: March 1943? possibly at Norman Wells, NWT
Closed: ?

Postal Concentration Center: Seattle, Washington

Double circle cancel.



Proof strike of H1 double circle cancel made by Army Postal Service employee in Edmonton.



Double circle used on self-addressed cover.

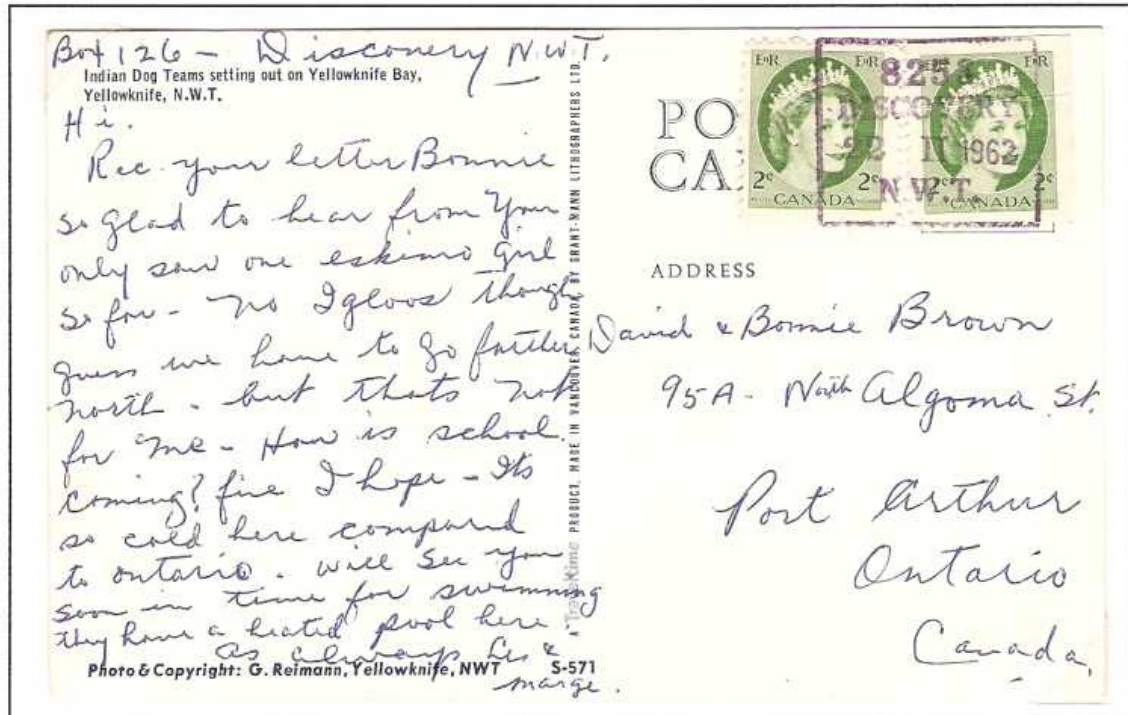
Discovery

Substances

Opened: May 16, 1960
Closed: June 10, 1969

Money Order Office Number: 8253 (Accounting)

The claims covering the gold deposit at Discovery were staked in 1944, about 85 km northeast of Yellowknife. Discovery Yellowknife Mines was organized to develop the property which went into production in 1950. Following a gold robbery in 1954, it was suggested to the mine management that a post office at the site would make for more secure shipping of bullion to the Royal Canadian Mint. The mine closed in 1969 with the post office following shortly afterwards.



Unusual usage of the MOON cancel on a commercial post card.



Registered commercial cover showing the circle date stamp and registration box.

Pine Point

Substances

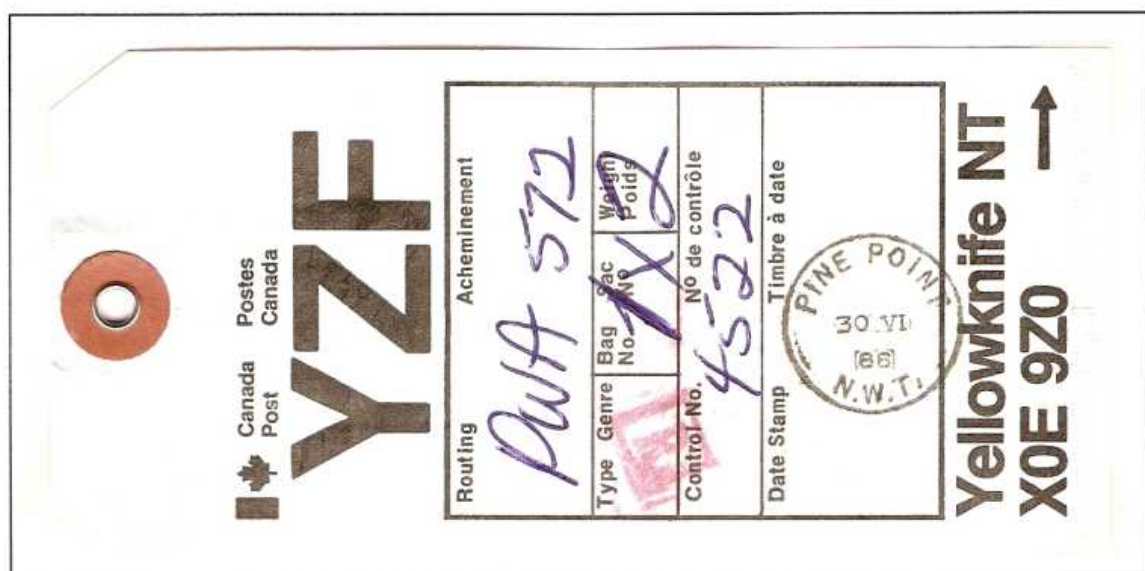
Opened: October 19, 1964
Change in Status: April 1, 1973
Closed: August 4, 1988

Money Order Office Number: 8769 (Accounting)
Post Office Computer Organization Number: 690260 (Accounting)

Although the Pine Point lead zinc deposit was known as early as 1899, serious development only began in the 1950s. Canadian National Railways extended its system to Pine Point in 1964 with government assistance to help bring the mine into production. A full townsite was set up in 1963. Active mining stopped in 1987 with milling and shipping continued for another three years. Municipal services ceased on August 15, 1988 preceded by the post office closure shortly before that.



Early registered cover showing the first MOON date stamp and registration box.



Mail bag tag showing circle date stamp and direct flight with Pacific Western Airlines to Yellowknife.

Tungsten

Substances

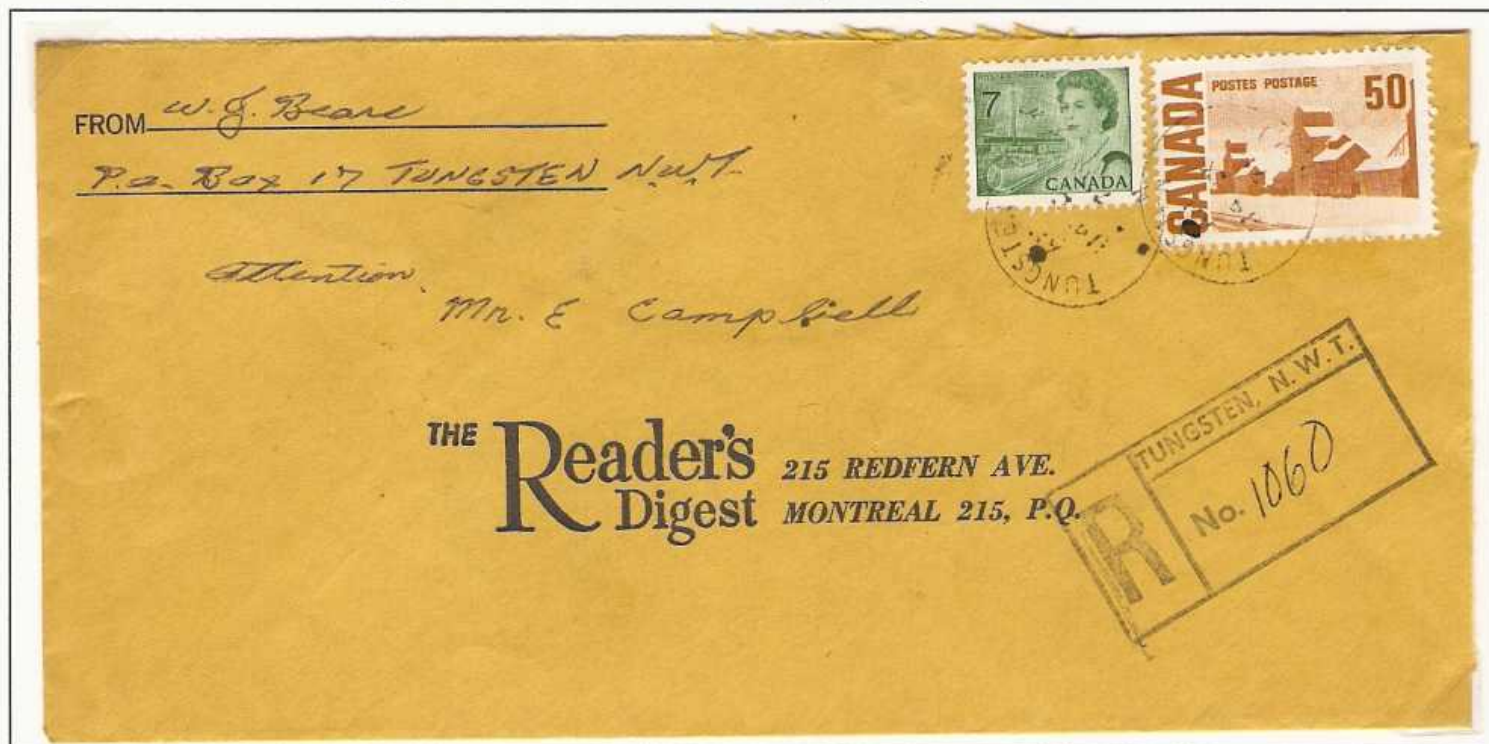
Opened: March 28, 1968
Change in Status: April 1, 1973
Closed: September 23, 1986

Money Order Office Number: 8006 (Accounting)
Post Office Computer Organization Number: 690007 (Accounting)

A large tungsten ore body was discovered in the Mackenzie Mountains near the NWT-Yukon boundary in 1954. In 1959 Canada Tungsten Mining was formed to bring the property into production. An all weather road was built from Watson Lake, Yukon and the mine started in 1962. A townsite was set up and served residents until the mine closed in 1986. The mine reopened in 2002-3 and again beginning in 2005 but without a full townsite.



Registered commercial cover with stamps tied by the MOON cancel.



Registered commercial cover showing circle date stamp.

Strathcona Sound

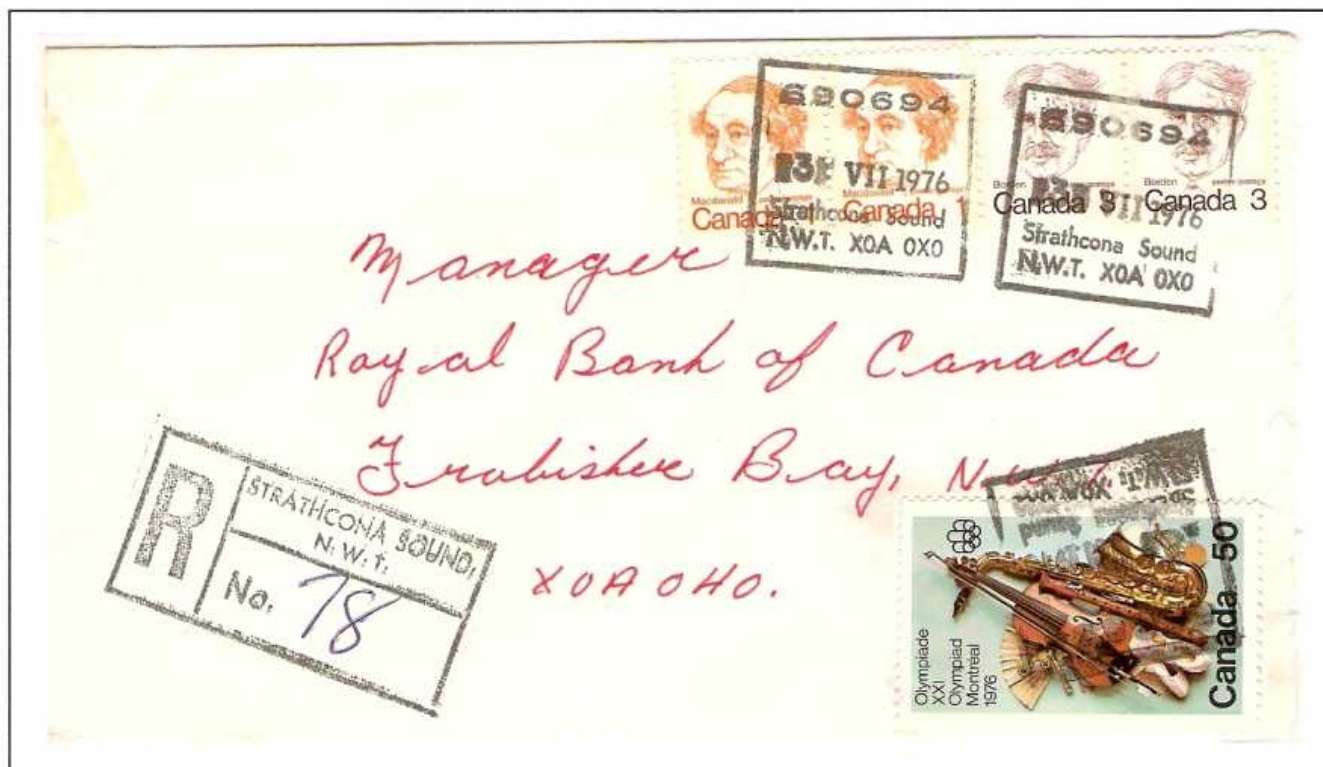
Substances

Opened: August 13, 1975

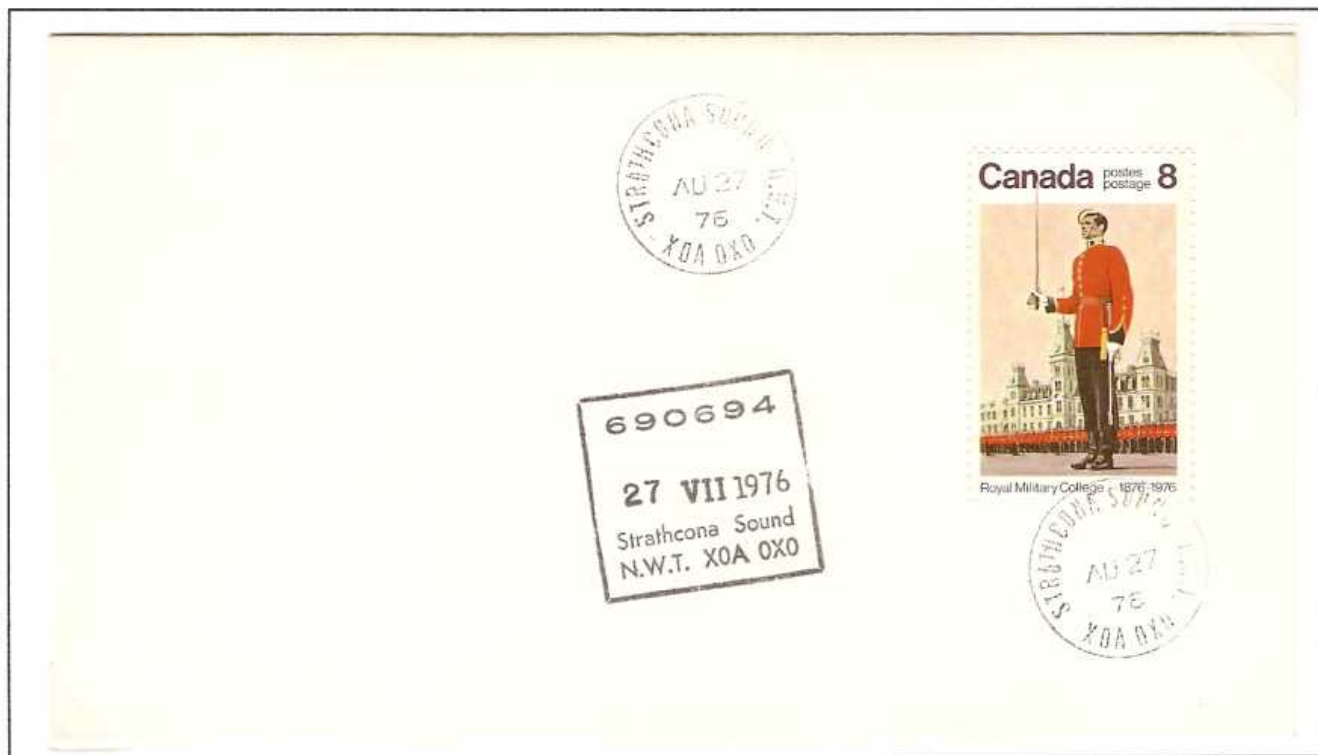
Post Office Computer Organization Number: 690694 (Non-Accounting)

Name Change to Nanisivik: July 25, 1976

A lead zinc deposit near Arctic Bay on Baffin Island was discovered in 1910. Serious development only began in the 1960s. Mineral Resources International agreed to bring the property into production with assistance from the Canadian government in 1972. Strathcona Mineral Services began operation of the mine in 1976. The Post Office Department suggested the name 'Strathcona Sound' to the Canadian Permanent Committee on Geographic Names. The Inuit residents of nearby Arctic Bay wanted a name for the community in their own language. 'Nansivik' meaning the place where people find things was approved. The mine remained in operation until 2002. A naval base is planned for the site with construction beginning in 2010.



Latest reported registered cover showing the POCON cancel and registration box.



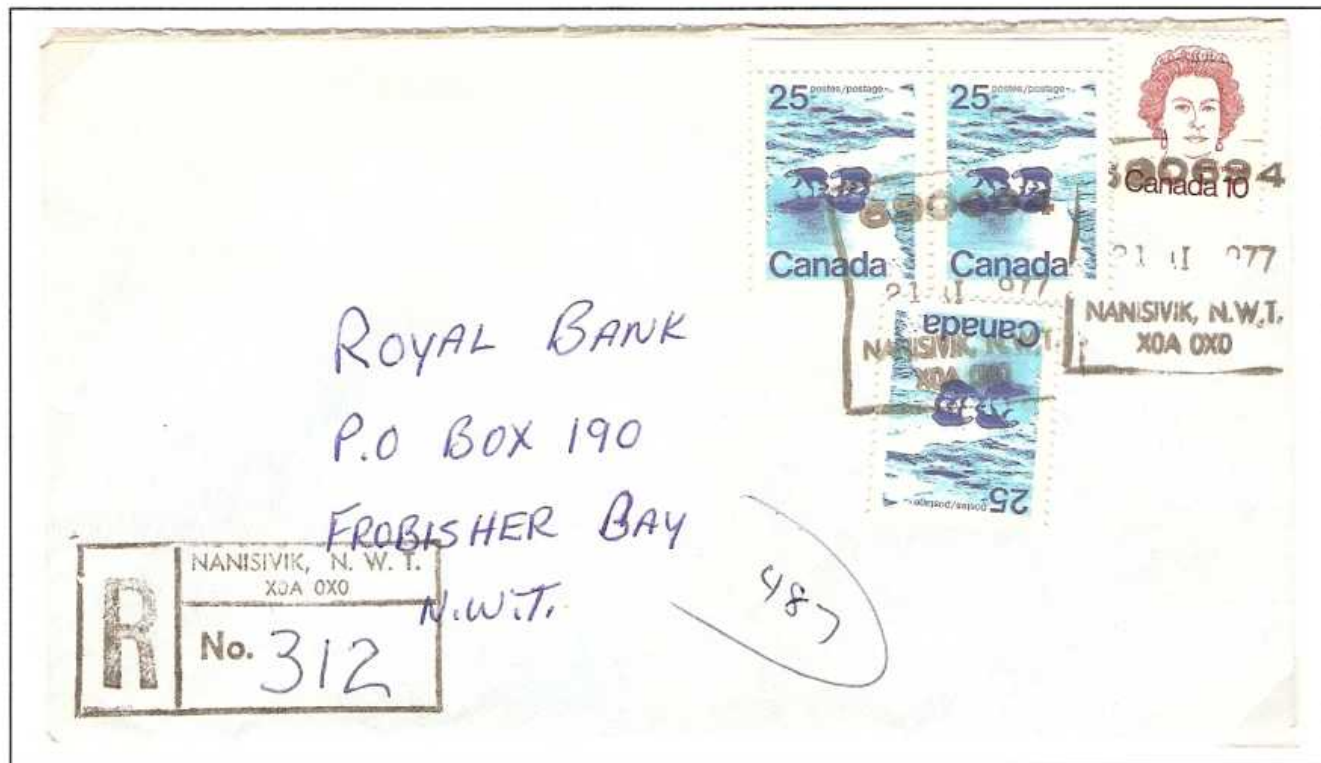
Favour cover showing the last day of use for the POCON date stamp and the circle date stamp.

Nanisivik

Substances

Opened: August 13, 1975 (opened at Strathcona Sound) Post Office Computer Organization Number: 690694 (Non-Accounting)
 Name Change to Nanisivik: July 25, 1976
 Change of Status: December 1, 1977 Post Office Computer Organization Number: 690694 (Accounting)
 Closed: March 29, 2003

'Nansivik' meaning the place where people find things was approved as the new name for the community. The lead zinc mine remained in operation until 2002. A naval base is planned for the site with construction beginning in 2010.



Commercial registered cover showing the first POCON date stamp and registration box.



Mail bag tag with the eighth POCON date stamp and showing direct flight service to Yellowknife.

Lupin

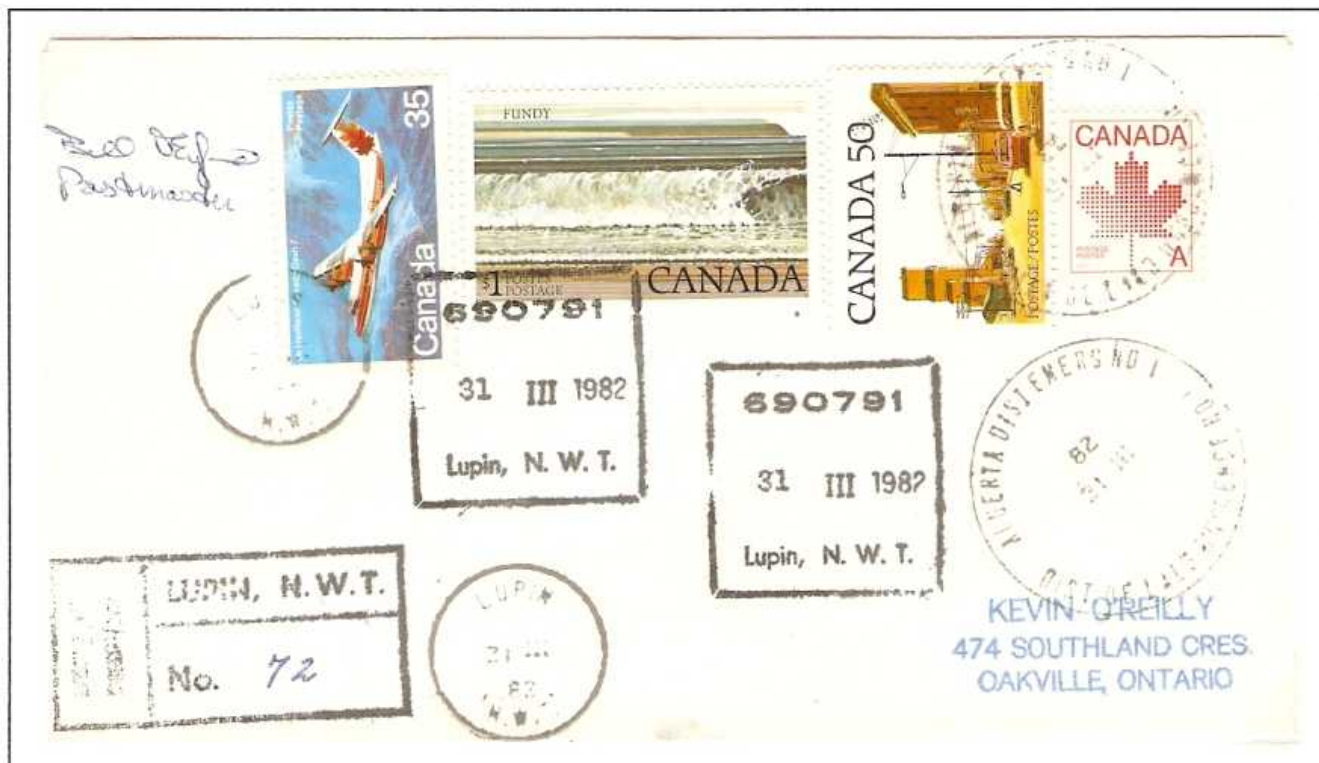
Substances

Opened: January 19, 1982

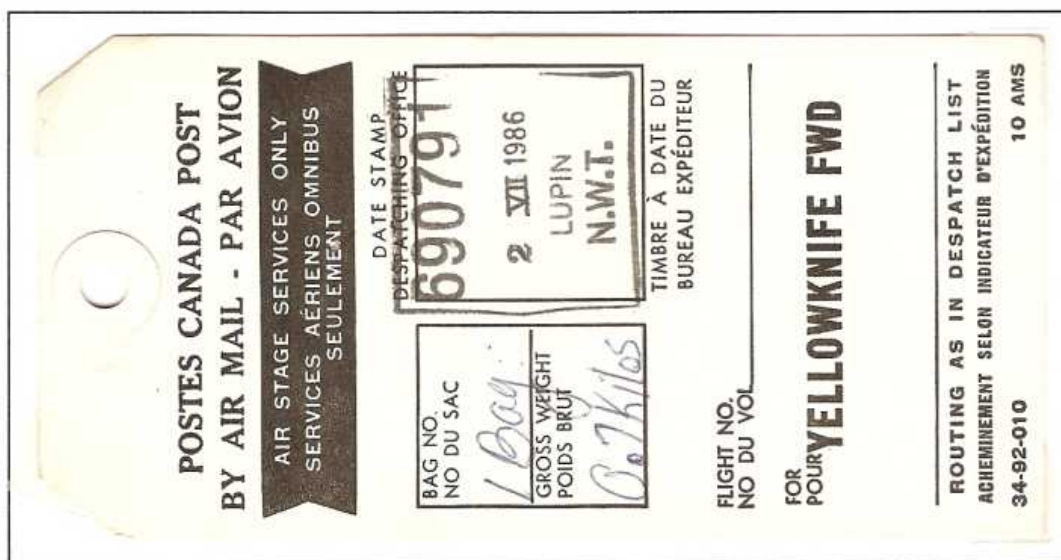
Closed: February 28, 1992

Post Office Computer Organization Number: 690791 (Accounting)

The Canadian Nickel Company discovered a gold showing on the northwestern shore of Contwoyto Lake in 1960. Echo Bay Mines took over the property in 1979 and brought it into production in May 1982 following the closure of its Port Radium operations. The post office was closed in 1992 due to high staff turnover and to save costs. The mine closed in February 2005.



Registered cover use of the latest recorded use of the Alberta District emergency date stamp and the first day of the new circle date stamp. The first POCON and registration box also shown.



Mail bag tag with the third POCON date stamp and showing direct flight service to Yellowknife.

Polaris

Substances

Opened: May 5, 1982
Closed: August 31, 2002

Post Office Computer Organization Number: 690805 (Accounting)

In 1960 a lead zinc deposit was discovered on Little Cornwallis Island about 100 km northwest of Resolute. Cominco took over the property in 1964 and secured approval to export ore in 1978 leading to production in 1981. When the ore was exhausted, the mine and post office closed in 2002.

Commercial cover showing a meter.

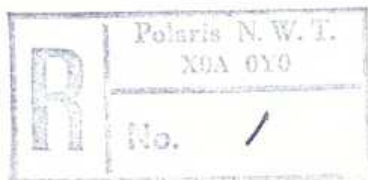
Cominco Metals, A Division of Cominco Ltd., Polaris Operation, Polaris, N.W.T., Canada X0A 0Y0



NAPEGG
#5 4807 49th Street
Yellowknife, N.W.T.
X1A 3T5



First registered cover on the opening day of the Polaris post office.



KEVIN O'REILLY
474 SOUTHLAND CRES.
OAKVILLE, ONTARIO
L6L 3N8

Port Burwell

Small Centres

Opened: July 18, 1933 (as if in Quebec)

Closed: September 22, 1935

Reopened (summer office): July 23, 1936 (in NWT)

Closed: September 21, 1937

Money Order Office Number: 75168 (Non-Accounting)

Money Order Office Number: 55565 (Non-Accounting)

A Canadian weather station was set up at Port Burwell 1884-86. A trading post was set up here in 1898 by Job Brothers of Newfoundland but bought by the Moravian missions in 1905. This facility was leased to the Hudson's Bay Company in 1925 until they sold their interests to the Newfoundland Government in 1942. The Hudson's Bay Company also had its own store at Port Burwell from 1916 to 1939. The RCMP had a detachment here from 1920 to 1937, where the post office was located. There was some confusion as to jurisdiction over Killinek Island where Port Burwell was located. The British Privy Council set the Labrador boundary in 1927 as the land draining into the Atlantic Ocean. As Port Burwell was not on that part of the island, it was thought that it was located in Quebec. An American geographer conducted mapping of the area using aerial surveys. When maps were published in 1936, it was confirmed that Killinek Island was indeed an offshore island and thus part of the NWT. New postal equipment was issued in 1936 to reflect this finding.



Registered cover showing the Quebec circle date stamp and registration box used until 1936.



Cover showing the NWT circle date stamp and registration box on the first day of recorded use. Commercial cover sent by an anthropologist studying the Inuit.

Fort Ross

Small Centres

Opened: September 12, 1940
 Closed: November 6, 1943
 Reopened: September 2, 1945
 Closed: March 20, 1948

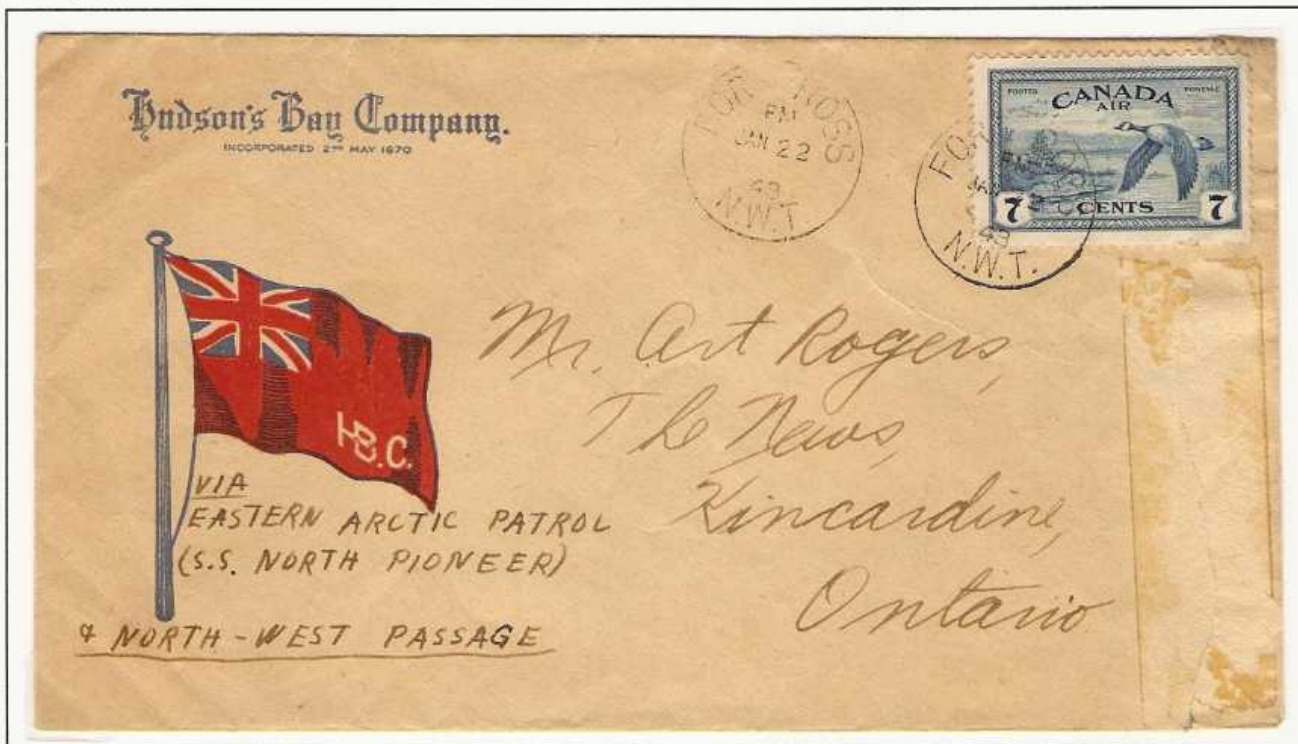
Money Order Office Number: 55440 (Non-Accounting)

Money Order Office Number: 55440 (Non-Accounting)

The Hudson's Bay Company intended to build a post at Thom Bay on Boothia Peninsula but the *Nascopie* could not reach that place so it was built at Bellot Strait. In 1942 and 1943 the ship could not reach this new post that was name Fort Ross. In November 1943 a US Air Force team evacuated the post as it was running low on supplies. It was reopened in 1945. When the *Nascopie* sank in 1947, it was decided to close the post due to its inaccessibility. The Manager left the post in March 1948 travelling by dog team to the Hudson's Bay Post at Gjoa Haven where an airplane took him out.



Registered cover from the opening day of the Fort Ross post office showing the circle date stamp and registration box.



Cover mailed from the North Pioneer and left at Arctic Bay, NWT where it was carried to Fort Ross by dog team and then to Gjoa Haven in the last mail.

Reindeer Depot

Small Centres

Opened: September 7, 1948

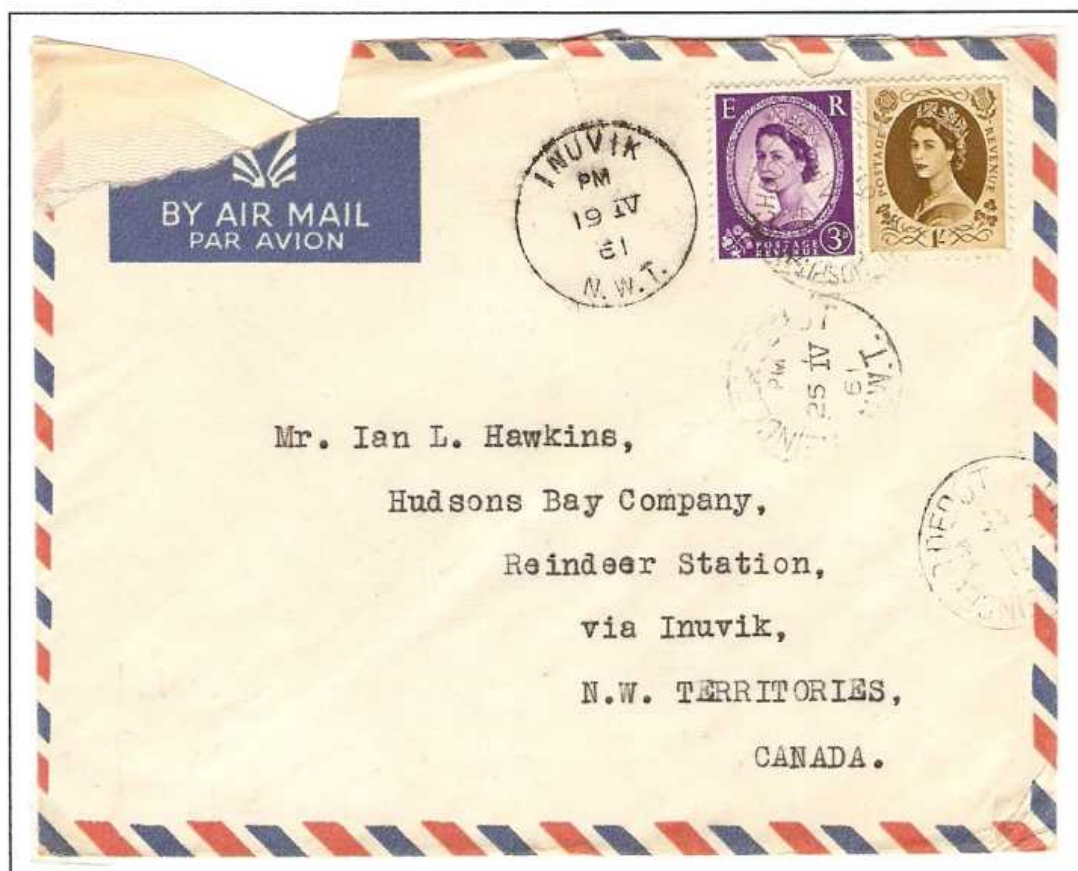
Money Order Office Number: 55576 (Non-Accounting)

Name Changed to Reindeer Station: March 21, 1962

The Canadian government purchased 3,000 reindeer from Alaska in 1929 as an economic development initiative. After many delays, the herd reached its destination in the Mackenzie Delta in 1935. A permanent winter camp to manage the herd was built in the summer of 1935 and named Reindeer Station. The Hudson's Bay Company set up a post in 1949. Management problems with the herd caused the government to close the site in 1968 and the Hudson's Bay Company store closed at the same time.



Registered cover showing the circle date stamp and registration box.



Scarce incoming cover with transit and receiver showing the commonly accepted name for the community.

Reindeer Station

Small Centres

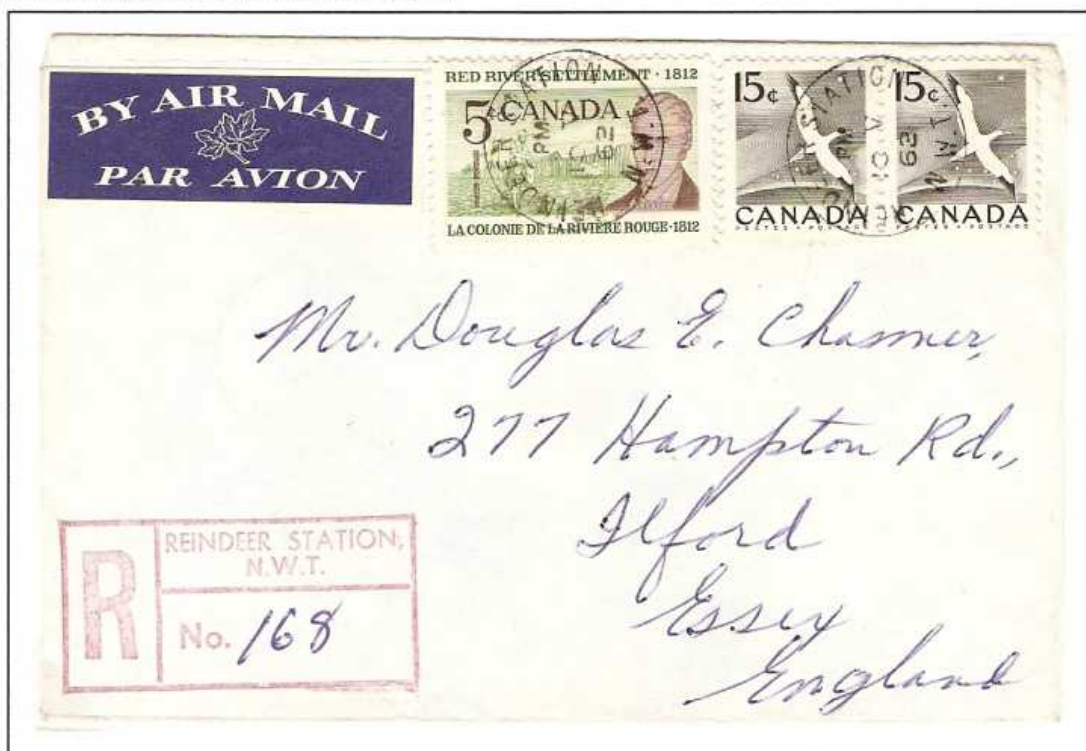
Opened: September 7, 1948

Money Order Office Number: 55576 (Non-Accounting)

Name Changed to Reindeer Station: March 21, 1962

Closed: June 30, 1968

A permanent winter camp to manage the imported Alaskan reindeer herd was built in the summer of 1935 and named Reindeer Station. The Hudson's Bay Company set up a post here in 1949. A geographer working in the Mackenzie Delta wrote to the Canadian Board on Geographic Names stating that the name of the settlement was "Reindeer Station" rather than "Reindeer Depot" as the post office was known. The Board suggested to the Post Office Department that a name change was recommended and it was agreed on February 7, 1962. Management problems with the herd caused the government to close the site in 1968 and the Hudson's Bay Company store closed at the same time.



Earliest recorded circle date stamp and registration box for Reindeer Station.



One of two recorded covers with the MOON cancel.

Rocher River

Small Centres

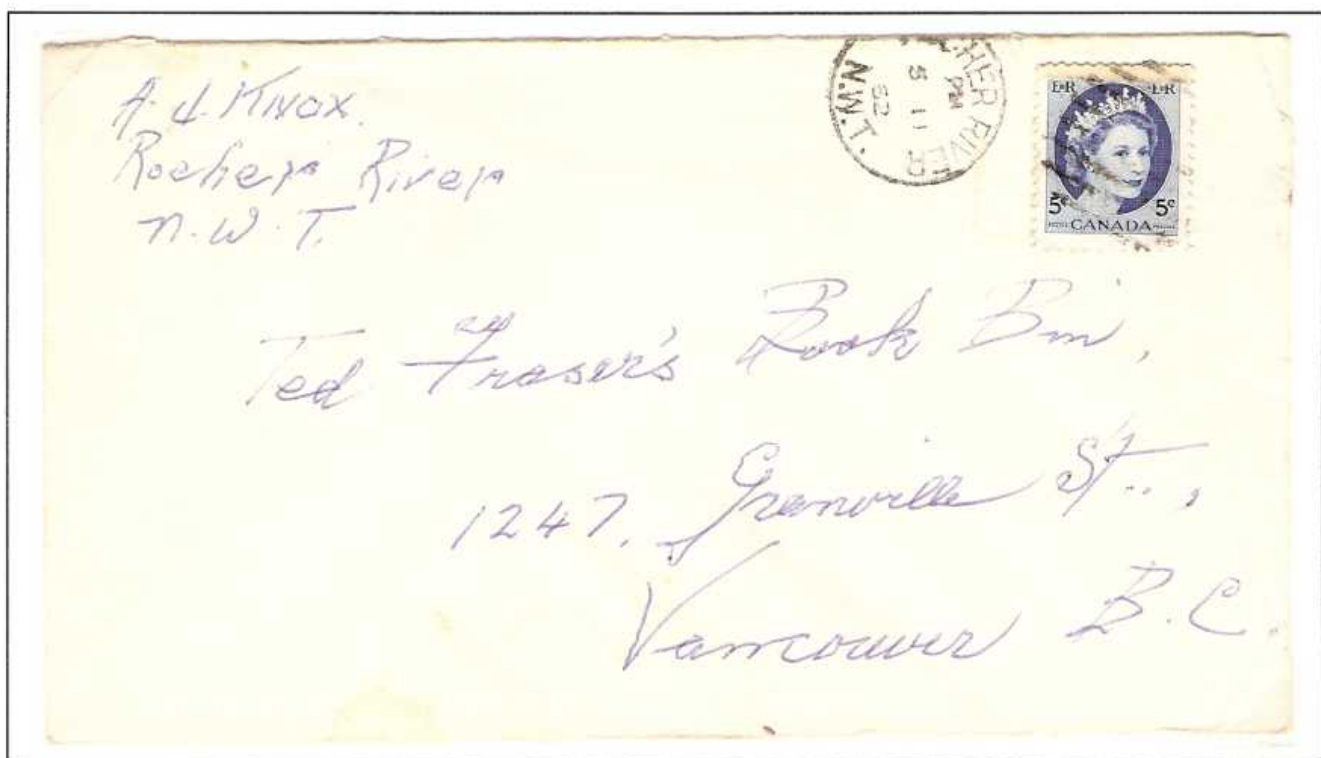
Opened: September 23, 1950
Closed: August 5, 1963

Money Order Office Number: 55577 (Non-Accounting)

The Hudson's Bay Company established the first trading post at Rocher River about 1921 and operated it until 1962 when it was sold to E.R. DeMelt. DeMelt operated his own trading post there 1935-68 until it was sold and finally closed in 1971. A federal day school opened in 1948 but burned down in 1960 which caused many people to leave the community for nearby Fort Resolution. The warehouse for a restaurant where the post office was located burned down on April 28, 1952 and all the post office equipment was lost. Emergency equipment was sent but it is not clear if it was used or for how long.



The only recorded registered cover from Rocher River.
It has a blank registration box that may have been part of the emergency kit sent up after the fire in 1952.



A commercial cover from 1962.

Cameron Hills

Small Centres

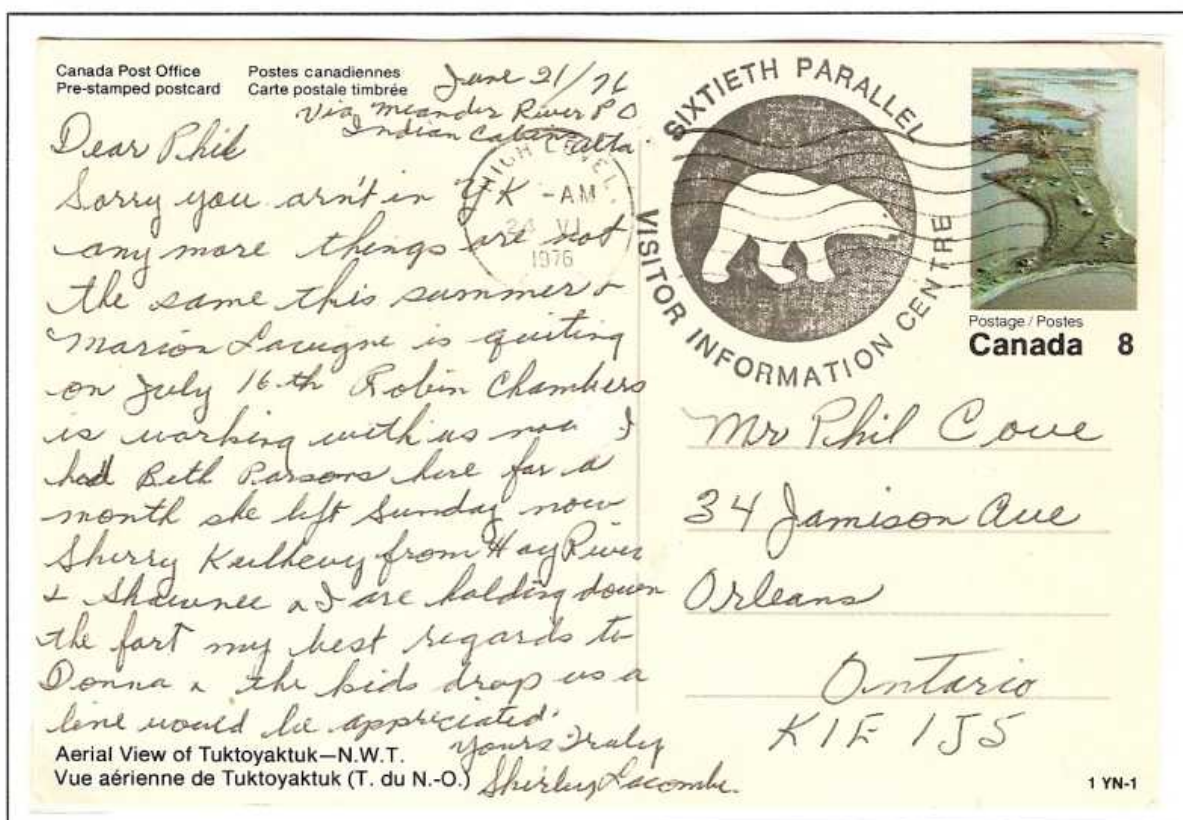
Opened: January 15, 1965
Closed: October 27, 1965

Money Order Office Number: 8725 (Accounting)

The Mackenzie Highway was completed to Hay River in 1948. A service station consisting of a restaurant, general store, tire shop and gas pumps was constructed in 1962-63 just north of the NWT-Alberta border on the east side of the highway. In 1964 the operators requested a post office that would be served by the regular bus service. The name 'Norweta', a contraction of Northwest Territories-Alberta was suggested. Postal equipment was made but the Secretary to the Advisory Committee on Northern Development rejected the name and suggested 'Cameron Hills', the name given to the nearest geographic feature. The Post Office Department accepted this proposal. The post office operated for a short time until a substantial shortage was discovered during a routine inspection. The post office was immediately closed and the postmaster was dismissed and later charged. In June 1966 the service station was sold to a new owner who operated it until November 1969 when the leased land was returned to the territorial government for use as a campground and tourist centre. The buildings were moved 64 km north to Enterprise and operated as the Frontier Inn until they were abandoned in the 1980s.



The only reported cancels from Cameron Hills.



Post card sent by the operator of the 60th Parallel Visitor Centre with postal address via Meander River, Alberta.

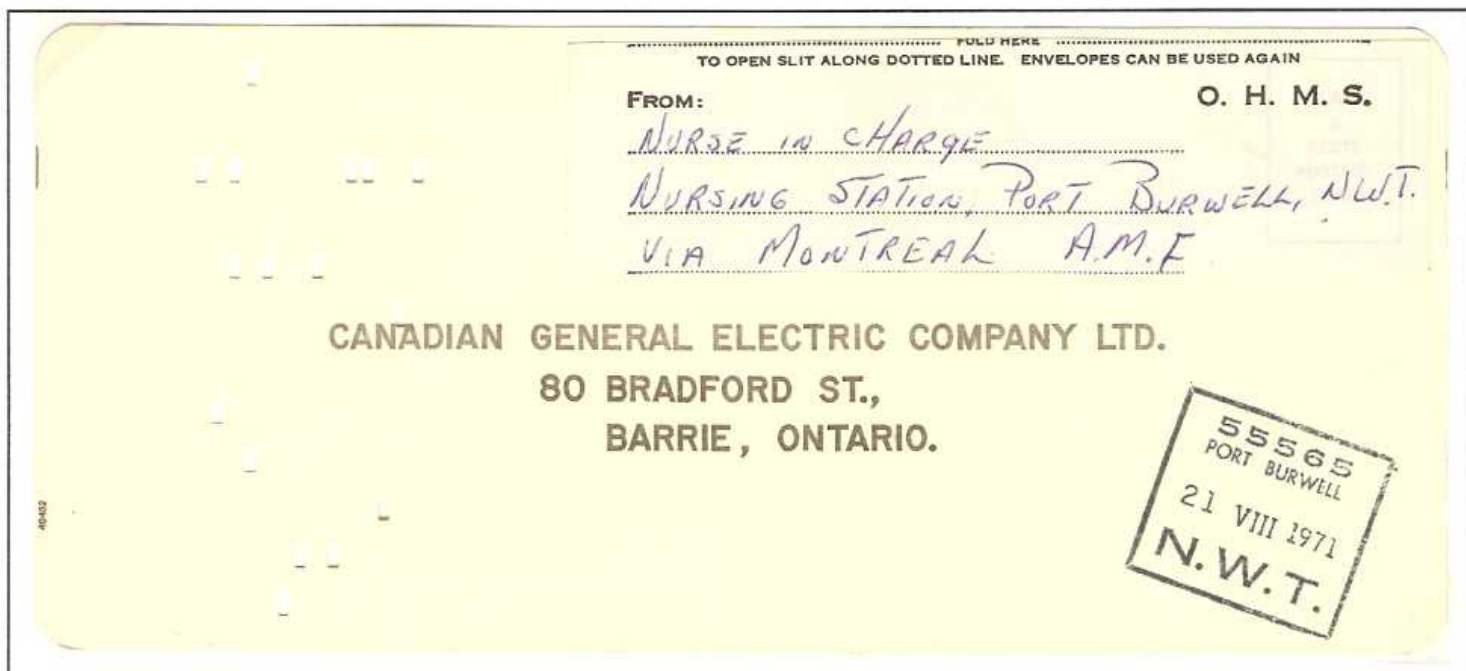
Port Burwell

Small Centres

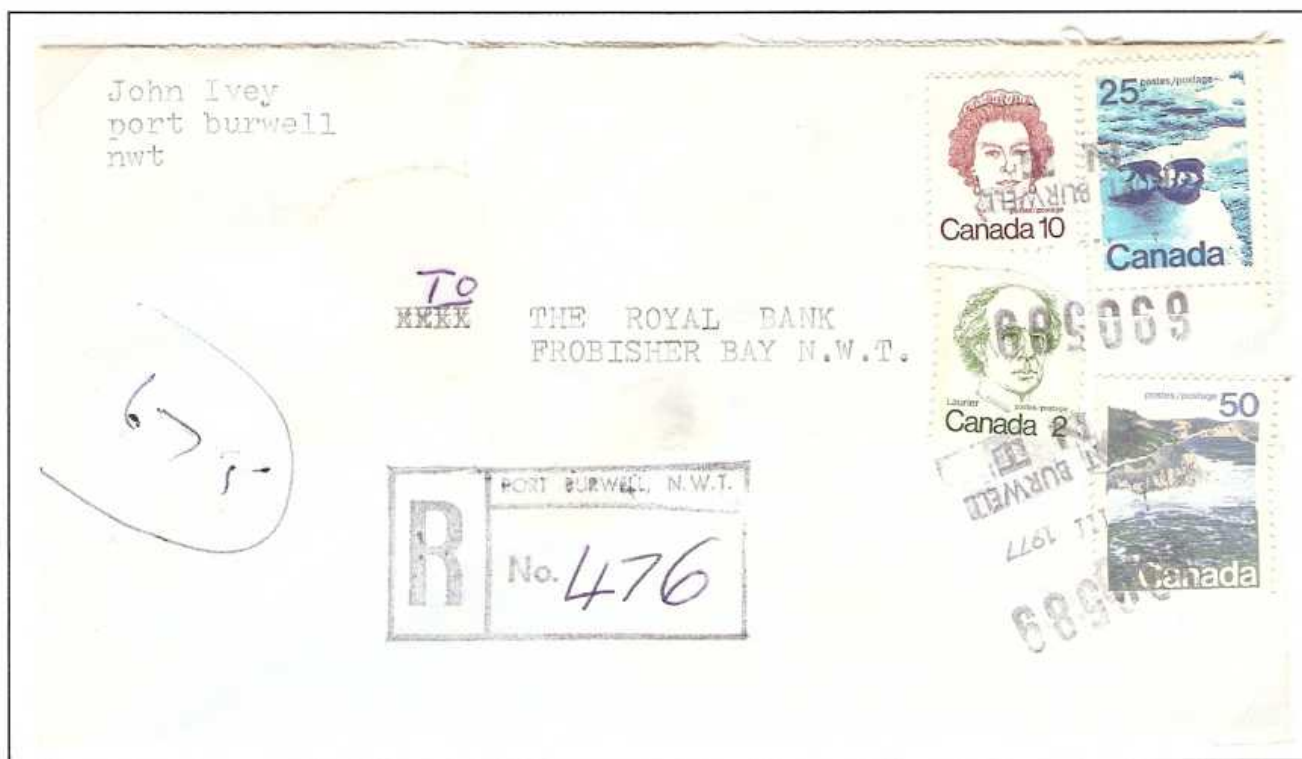
Reopened: January 26, 1968
Change in Status: April 1, 1973
Closed: February 27, 1978

Money Order Office Number: 55565 (Non-Accounting)
Post Office Computer Organization Number: 690589 (Non-Accounting)

Inuit continued to live in the Port Burwell area after the European presence ended in the 1940s. In 1960 a cooperative store was set up at the old Hudson's Bay Company and RCMP site. The settlement was move a few km to the west in 1965. A permanent airstrip was judged too costly to build making year-round access difficult at best. The federal nursing station closed in 1977 and the remaining families were forced to move in February 1978. A compensation agreement was signed in 1988 and the seasonal Coast Guard facility there closed in August 1985. Some clean-up work was done in 1995 but many buildings are still there.



MOON cancel used on a warranty card as official mail.



Commercial registered cover showing POCN date stamp and registration box.

Opened: July 21, 1937
 Closed: August 17, 1937

Money Order Office Number: 55600 (Non-Accounting)

The SS Distributor (III) was built at Fort Smith in 1920. It was sold to the Hudson's Bay Company in 1924 and operated until 1947. A post office operated on board the ship for the visit of the Governor General of Canada, John Buchan, also known as Lord Tweedsmuir. The Vice Regal Party arrived at Waterways, Alberta on July 21 and reached the SS. Distributor at Fort Smith, NWT two days later. The steamer stopped at all the communities downstream and arrived at Aklavik, the northern terminus, on August 1, 1937. The Governor General then took a brief flight to Tuktoyaktuk and return two days later, and on August 4 flew to Fort Norman and several other points, finally reaching Edmonton on August 8. It appears that the post office operated on the SS Distributor on the upstream trip back to Fort Smith on August 16. The post revenues amounted to \$74. Material from the upstream trip is hard to find.



Back Flap

Cover on Governor General's stationary addressed to his Aide-de-Camp, Colonel Henry Willis-O'Connor. It appears to be addressed in Lord Tweedsmuir's handwriting.



A favour cover dated two days before the post office closed. Latest reported use.

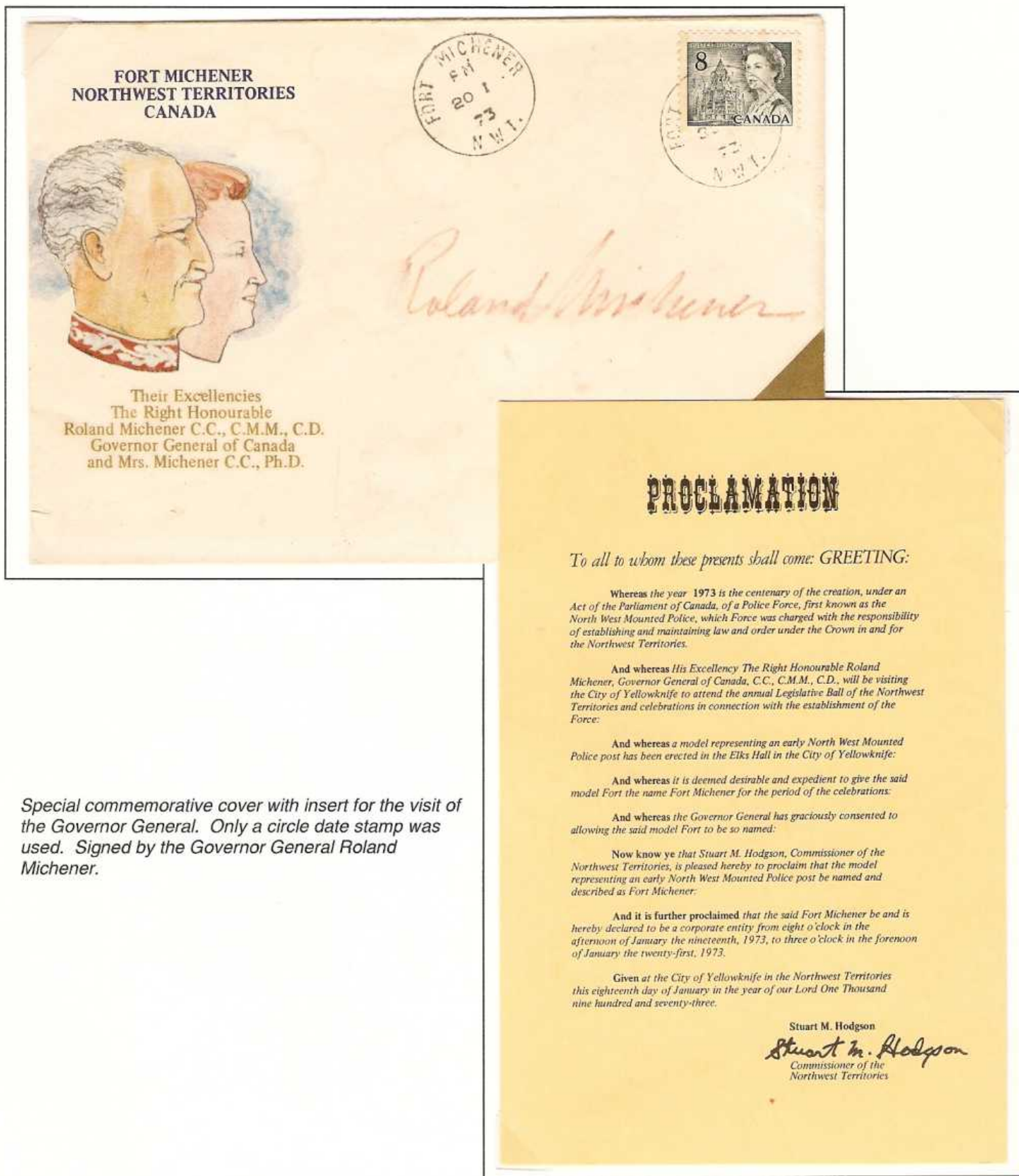
Fort Michener

Subs

Opened: January 19, 1973
Closed: January 20, 1973

Money Order Office Number: 55416 (Non-Accounting)

Fort Michener was a special two day post office to celebrate the visit of Canada's Governor General Roland Michener to the NWT for the centenary of the RCMP. The visit was also timed to take in the Annual Ball of the NWT Legislative Assembly and was held at the Elk's Hall in Yellowknife, NWT where the post office was located.



Special commemorative cover with insert for the visit of the Governor General. Only a circle date stamp was used. Signed by the Governor General Roland Michener.

Cambridge Bay Retail Postal Outlet

Subs

Opened: January 8, 1990
Closed: February 15, 1991

Post Office Computer Organization Number: 691089 (Accounting)

A Retail Postal Outlet was opened in a small variety shop in the Enokhok Centre at Cambridge Bay to relieve the workload at the main post office in the community. This post office closed when the main post office moved into the same building.

Name Carol McKie
Address Box 1016
Cambridge Bay NT XOE000
Tel. No. 983-2007

Northwestel
BAG 9500
YELLOWKNIFE, N.W.T.
X1A 2R3

CANADA 39
691089
JUN 27 1990
CAMBRIDGE BAY
NWT

Cover shows the only date stamp, struck in black, used at this office.

Name S. Kaufman
Address Gen. Del. XOE000
Cam. Bay, N.W.T.
Tel. No. 983-2868

MUNICIPALITY OF
CAMBRIDGE BAY
P.O. BOX 16
CAMBRIDGE BAY, N.W.T.
XOE 000

CANADA
691089
NFC 20 1990
CAMBRIDGE BAY
NWT

Northwestel
BAG 9500
YELLOWKNIFE, N.W.T.
X1A 2R3

POCON cancel in blue on a metered cover.

Fort Smith Retail Postal Outlet

Subs

Opened: August 31, 1992

Closed: January 17, 2000

Post Office Computer Organization Number: 083690 (Accounting)

This franchise post office operated in the Northern Store (formerly the Hudson's Bay Company) at 5 Mackenzie Road, a few blocks from the main post office.

The first date stamp shown on this commercial window envelope, was used until February 1997.



KEVIN O'REILLY
P.O. BOX 444
YELLOWKNIFE, N.W.T.
CANADA X1A 2N3

97191

Latest recorded use of the second date stamp.

Hay River Vale Island Postal Station

Subs

Opened: January 19, 1971
Change in Status: April 1, 1973
Closed: July 28, 1978

Money Order Office Number: 8986 (Accounting)
Post Office Computer Organization Number: 690384 (Accounting)

Following a severe flood in the spring of 1963, a new townsite for Hay River was surveyed upstream. A post office opened in the New Town on April 12, 1967 while the main post office remained in Old Town on Vale Island. Both post offices cancelled mail with separate date stamps and registration markings and offered full services. The New Town post office became the main post office on July 7, 1969.

In 1971 the Vale Island post office became a Postal Station. The first date stamps read "Hay River Postal Station Vale Island". To speed up delivery and to avoid misdirection, the Alberta District Director of Postal Services suggesting that the name be changed to "Vale Island Postal Station, Hay River". New date stamps were prepared in April 1971. The post office closed in 1978, over objections from the local residents.

Commercial registered cover showing the circle date stamp and registration box used at Vale Island until its own distinctive date stamps for the Postal Station designation were received in January 1971.



Commercial registered cover showing the scarce first circle date stamp and registration box (latest recorded use).

Hay River Sub No. 1

Subs

Opened: September 25, 1987
Closed: November 30, 1990

Post Office Computer Organization Number: 690899 (Accounting)

This post office operated in Ring's Drug Store at 9 Courtoreille Street, Hay River. It was part of Canada Post's franchising program to open sub post offices or retail outlets for each of the staff post office communities.

Only recorded commercial registered cover.

PASSPORT APPLICATION FORM A

FOR APPLICANTS
16 YEARS OF AGE OR OVER

External Affairs Affaires extérieures
Canada Canada

Andrew Pope
Box 1242, Hay River
N.W.T., X0E 0R0

R	HAY RIVER, NWT SUB - AUX 1
	No. 270

1/25

Canada 2 SUB - AUX 1 25 IX 1987 HAY RIVER NWT	Canada 2 SUB - AUX 1 25 IX 1987 HAY RIVER NWT	Canada 20 SUB - AUX 1 25 IX 1987 HAY RIVER NWT	Canada 20 SUB - AUX 1 25 IX 1987 HAY RIVER NWT	Canada 65 SUB - AUX 1 25 IX 1987 HAY RIVER NWT
---	---	--	--	--

690899
SUB - AUX 1
25 IX 1987
HAY RIVER
NWT

Kevin O'Reilly
Box 444
Yellowknife
N.W.T.

The first registered item sent from this post office showing the only date stamp used and the registration box.

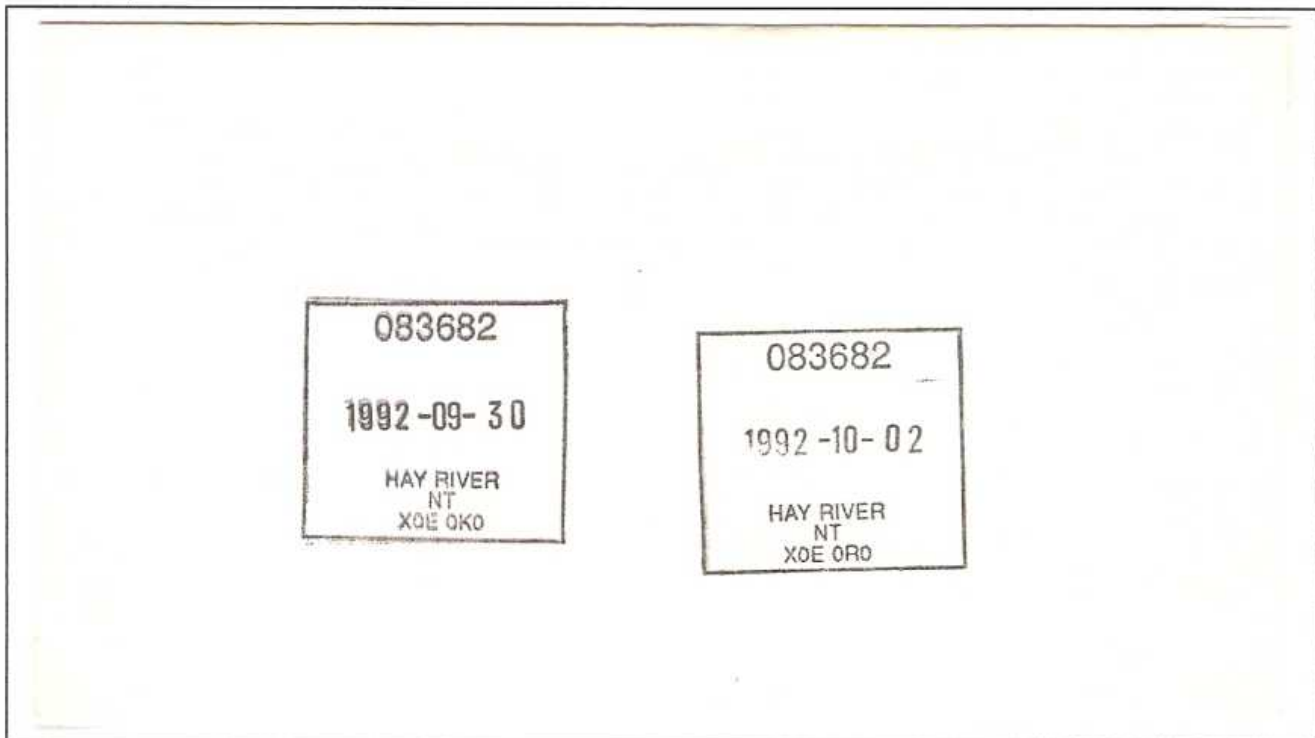
Hay River Retail Postal Outlet

Subs

Opened: August 24, 1992
Closed: February 13, 1997

Post Office Computer Organization Number: 083682 (Accounting)

This franchise post office operated in the Northern Stores (formerly Hudson's Bay Company) at 64 Woodland Drive, a few blocks from the main post office.



Favour strikes of the two date stamps used.

The first at left had an error for the postal code and was corrected one month after the office opened.

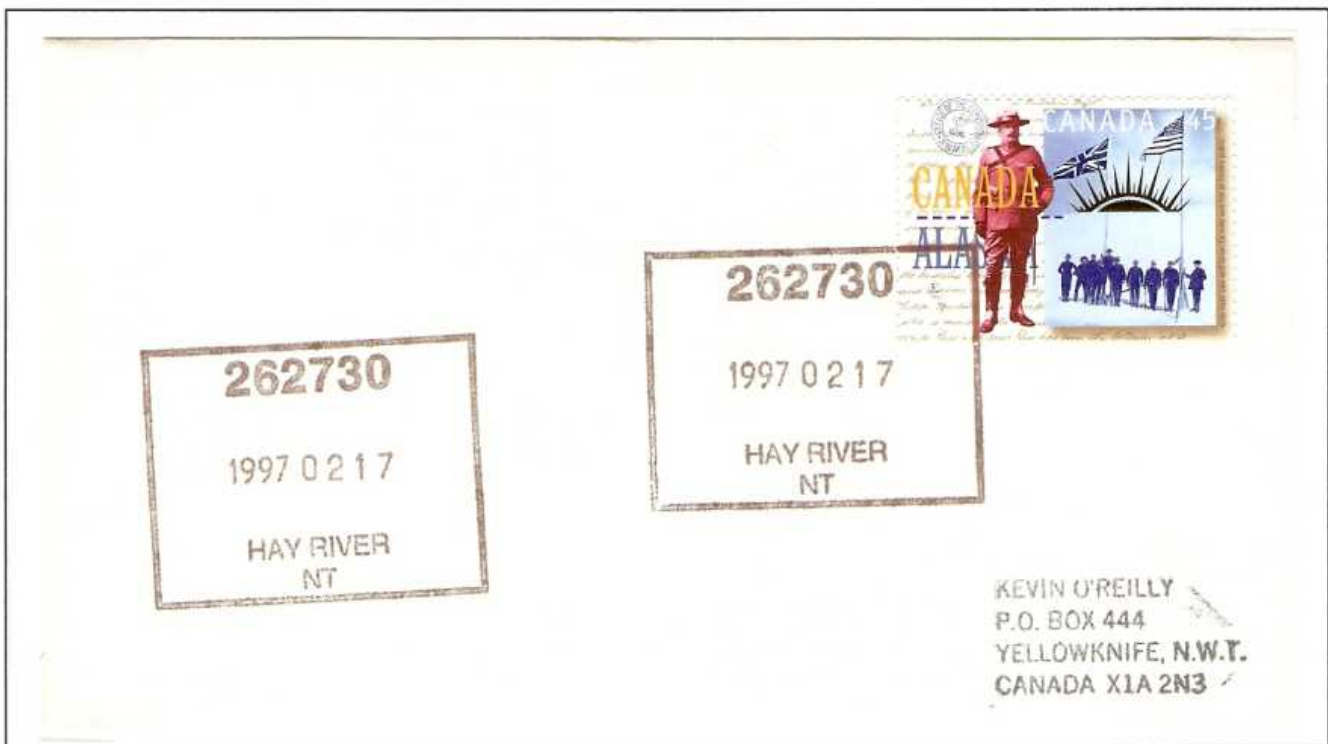
Hay River Gross Margin Outlet

Subs

Opened: February 17, 1997
Closed: July 6, 1997

Responsibility Centre Number: 262730 (Accounting)

This post office operated in the Hay River Reddi Mart store at 938 Mackenzie Highway, on the south side of Hay River.



This short-lived post office used only one date stamp.

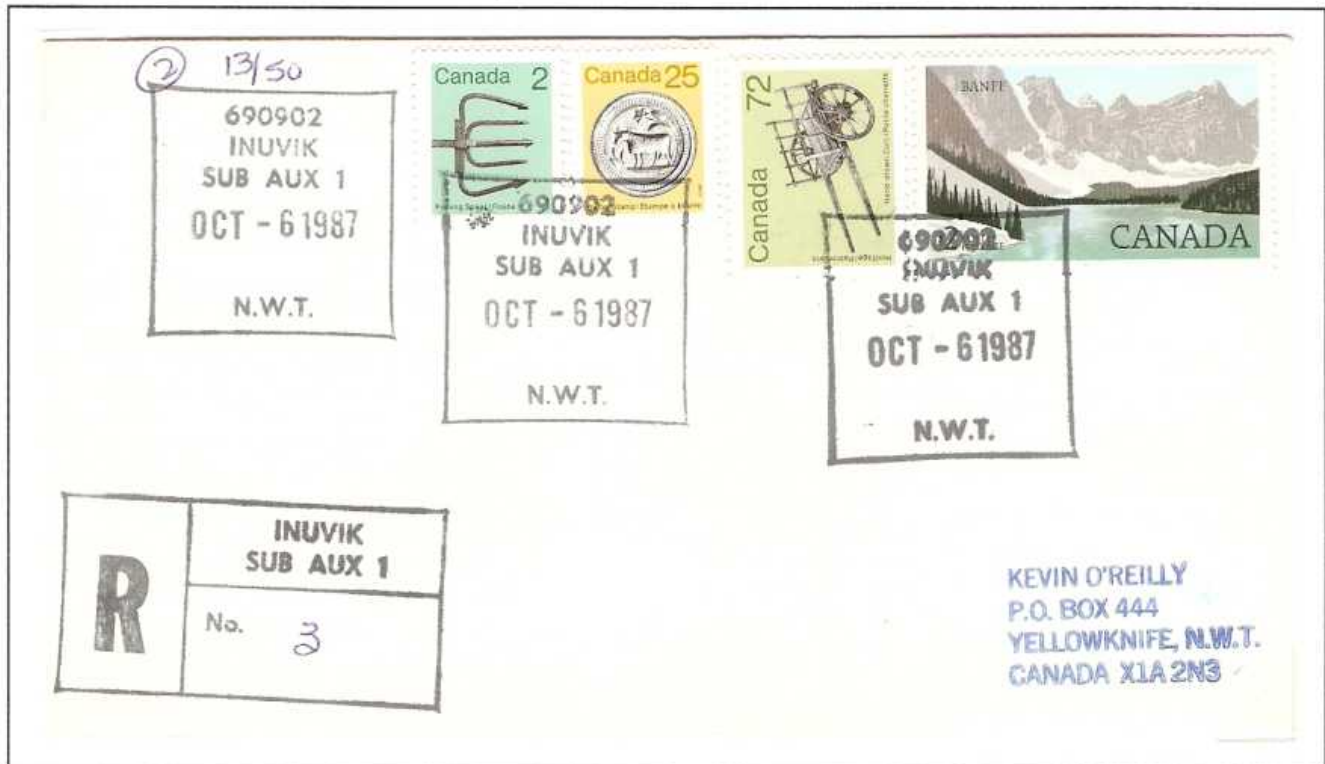
Inuvik Sub No. 1

Subs

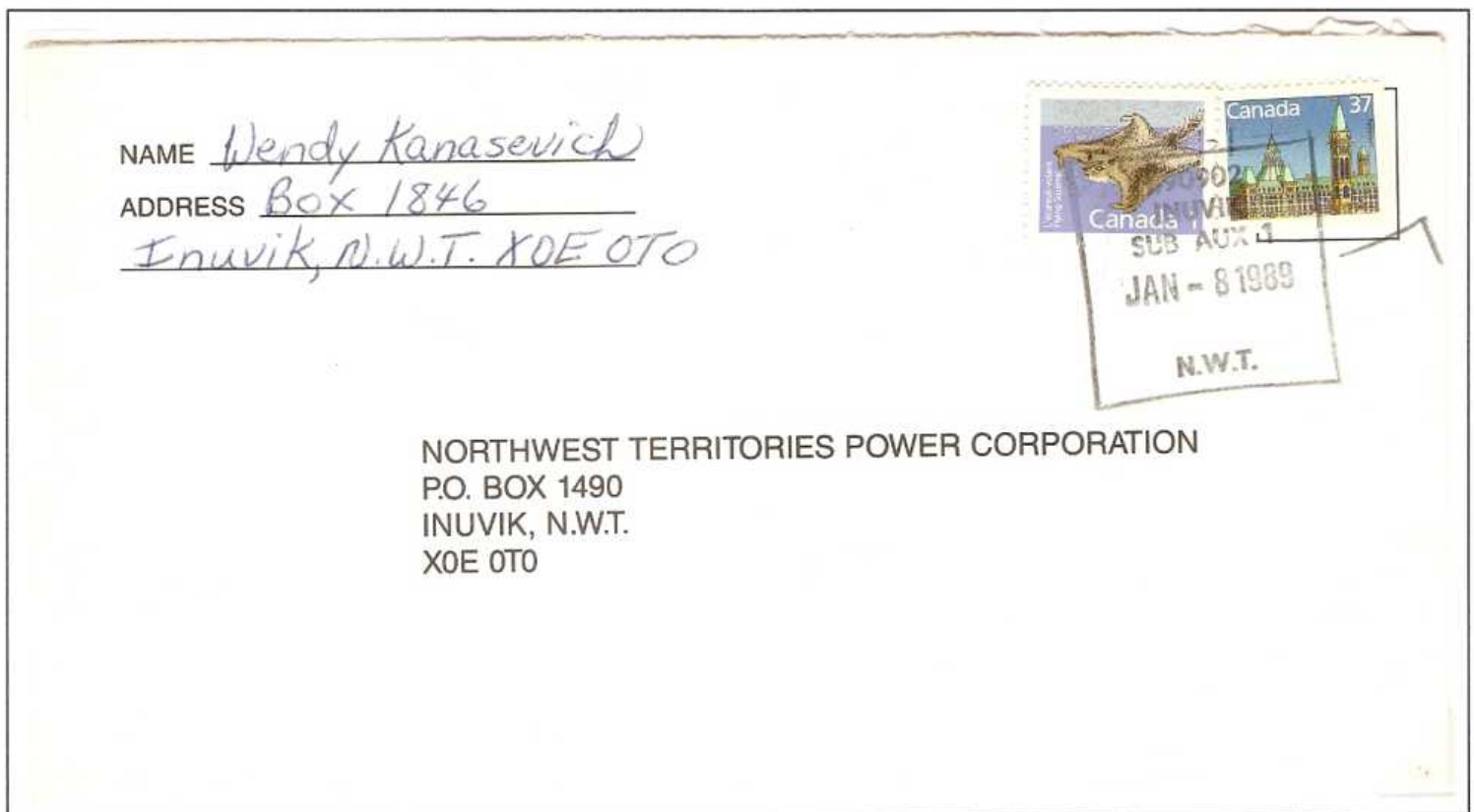
Opened: October 6, 1997
Closed: March 20, 1989

Post Office Computer Organization Number: 690902 (Accounting)

This post office operated in Rexall Drugs at 125 Mackenzie Road, Inuvik. It was part of Canada Post's franchising program to open sub post offices or retail outlets for each of the staff post office communities.



Registered cover on the opening day showing the only date stamp used and the registration box.



Commercial cover showing the latest recorded use of the POCN date stamp.

Inuvik Retail Postal Outlet

Subs

Opened: September 8, 1992
Closed: February 7, 1997

Responsibility Centre Number: 083674 (Accounting)

This franchise post office operated in the Northern Stores (formerly Hudson's Bay Company) at 160 Mackenzie Road, a few blocks from the main post office.



Mail bag tag showing the only date stamp used at this post office.

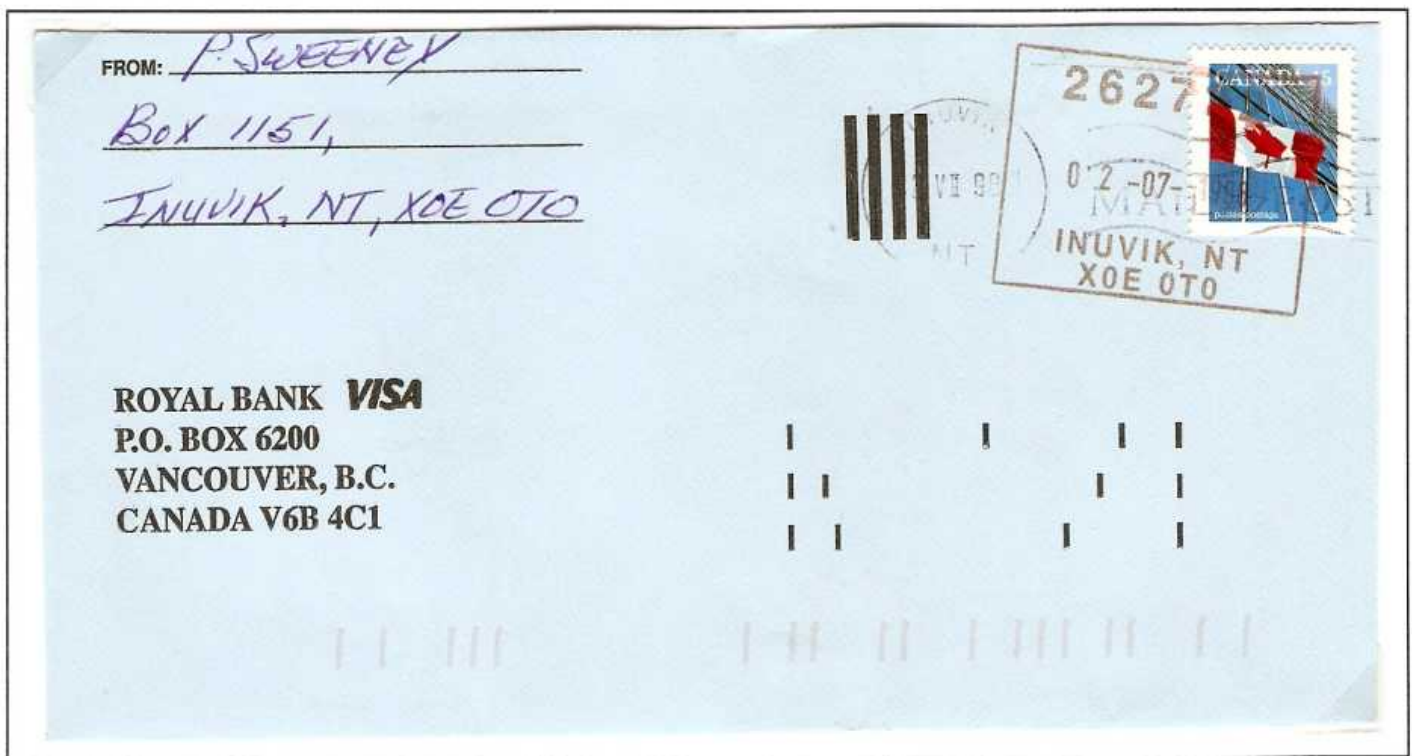
Inuvik Gross Margin Outlet

Subs

Opened: February 10, 1997
Closed: October 1, 1998

Responsibility Centre Number: 262722 (Accounting)

This post office operated in the Inuvik Sewing and Crafts retail store at 169 Mackenzie Road, a few blocks from the main post office.



Commercial cover showing the only date stamps used at this post office.

Iqaluit Gross Margin Outlet

Subs

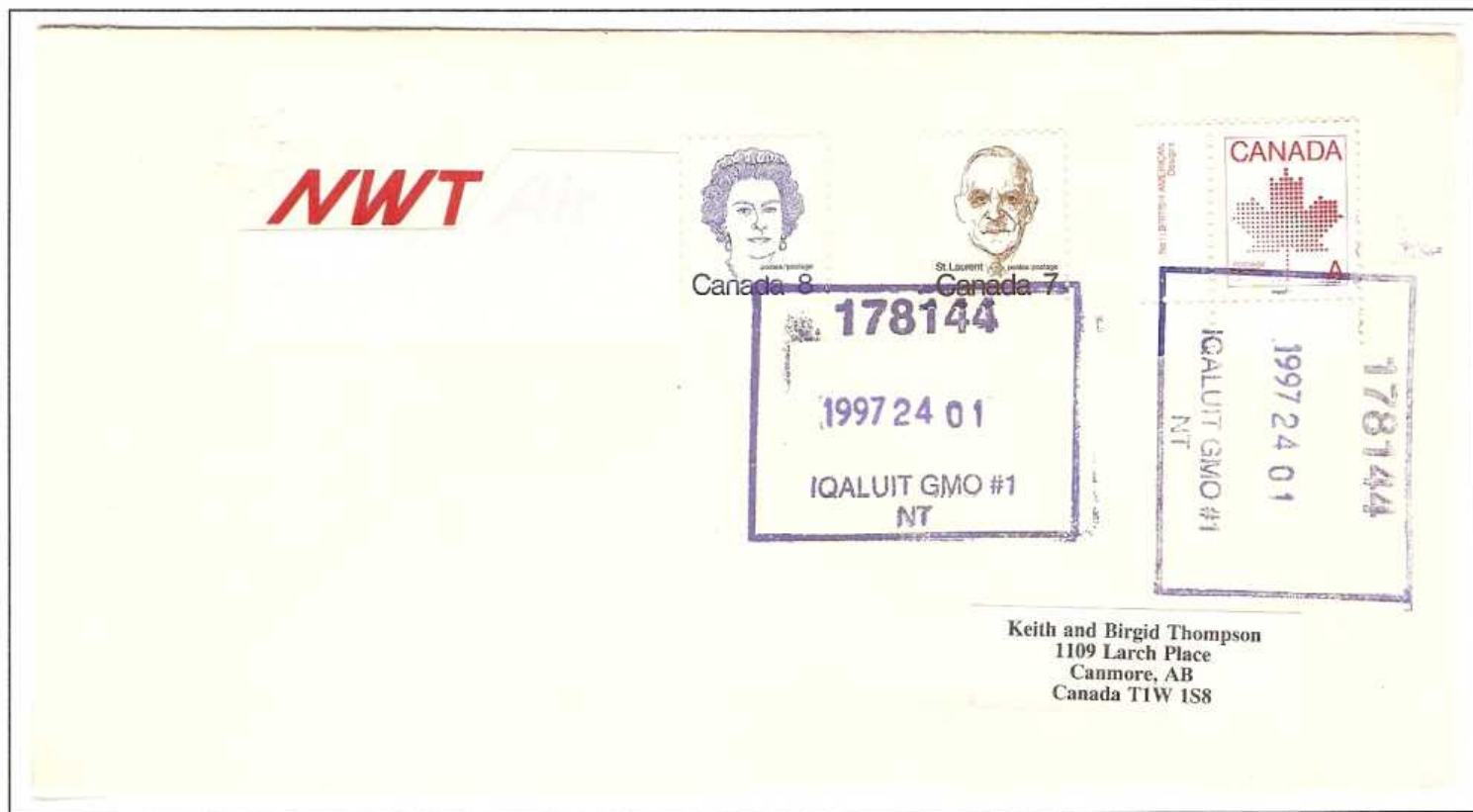
Opened: February 6, 1996
Closed: June 30, 1998

Responsibility Centre Number: 178144 (Accounting)

This post office operated in the Apex Convenience Store about 4 km southwest of the main post office.



Cover showing the only date stamp (earliest recorded use) used at this post office in red.



Cover showing the latest recorded use of the date stamp, struck in blue.

Yellowknife Sub Post Office No. 1

Subs

Opened: Mar. 14, 1955

Closed: June 1, 1959

Reopened: October 14, 1961

Change in Status: April 1, 1973

Changed to Retail Postal Outlet 020079: December 9, 1991

Closed: November 30, 2001

Money Order Office Number: 8999 (Accounting)

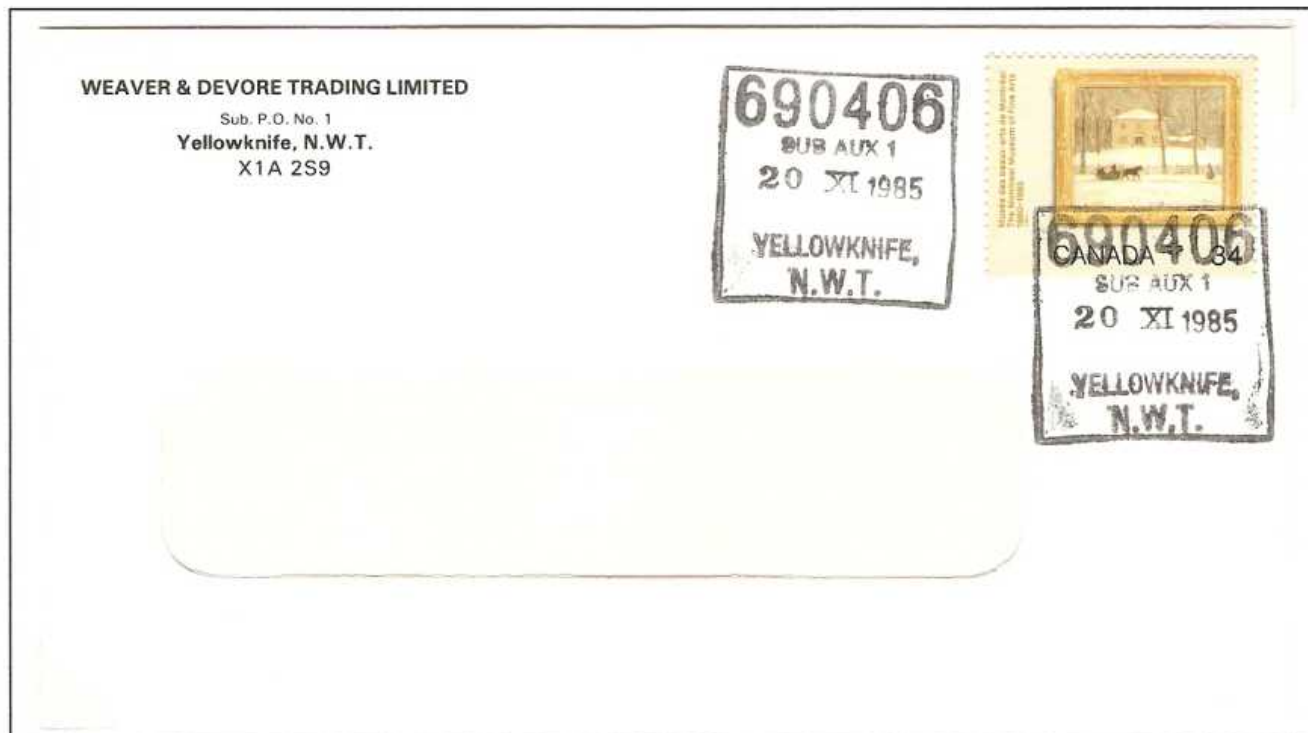
Money Order Office Number: 8999 (Accounting)

Post Office Computer Organization Number: 690406

Following the move of the Yellowknife post office to the New Town on August 3, 1953 residents called for a sub post office in the Old Town. A sub post office was opened in A. S. Hodgson's Ltd. General Store but closed in 1959. It reopened in the Weaver and Devore Trading Ltd. general store at 3601 Weaver Drive until it closed permanently in 2001.



A registered cover from the first location of Sub Post No. 1 showing the circle date stamp and registration box



Cover showing the second POCN date stamp.

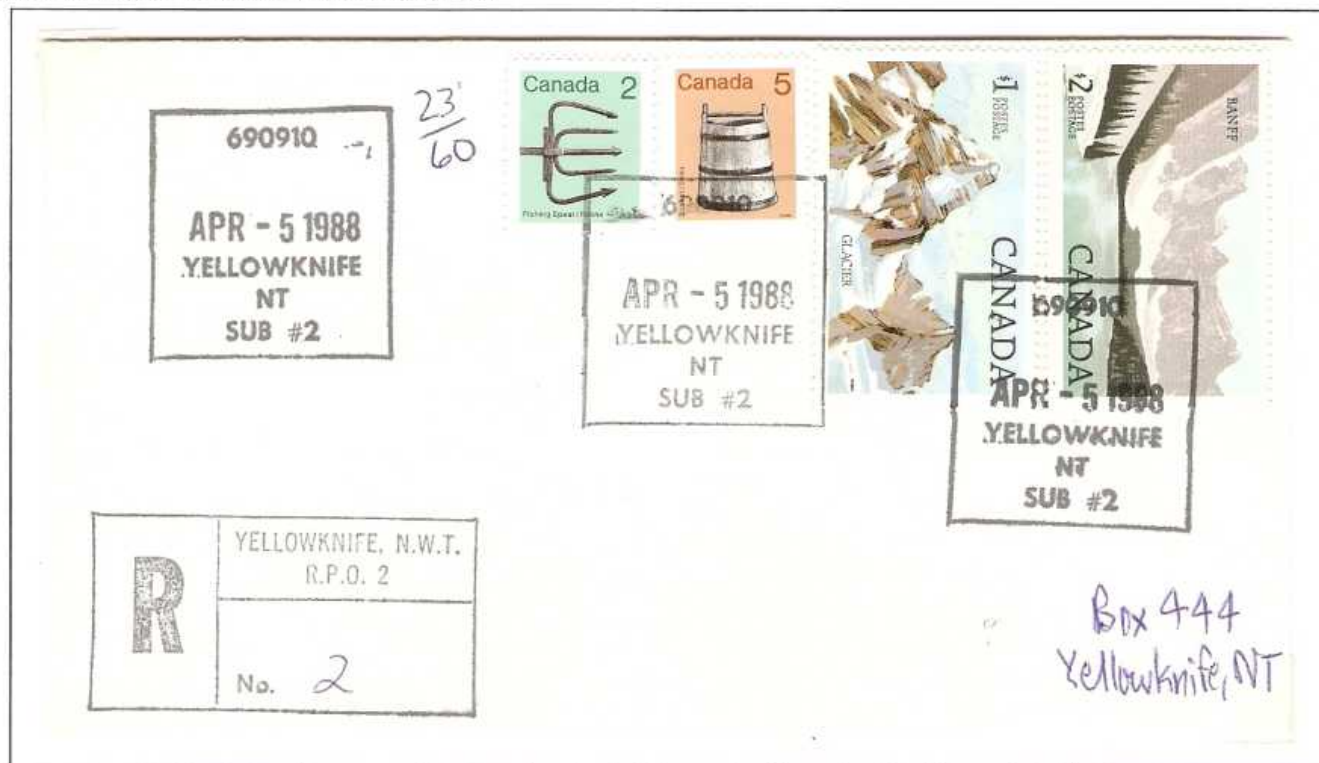
Yellowknife Sub Post Office No. 2

Subs

Opened: April 5, 1988
Closed: May 13, 1988

Post Office Computer Organization Number: 690910 (Accounting)

This post office operated in the Busy Bee Wool and Gift Shop in the Yellowknife Centre, Lower Mall. It was part of Canada Post's franchising program to open sub post offices or retail outlets for each of the staff post office communities. The post office closed after the owner was injured at work and the shop closed.



Registered cover on the opening day of the post office showing the registration box.

Yellowknife Retail Postal Outlet No. 3

Subs

Opened: May 1, 1989
Closed: June 30, 1989

Post Office Computer Organization Number: 690937 (Accounting)

This post office operated in the NWT Video store at 314 Woolgar Avenue in the Frame Lake South subdivision in southwest Yellowknife. The store closed at the end of June 1989 due to lack of business and the post office ceased operations.



Registered cover showing the POCN date stamp and registration box.

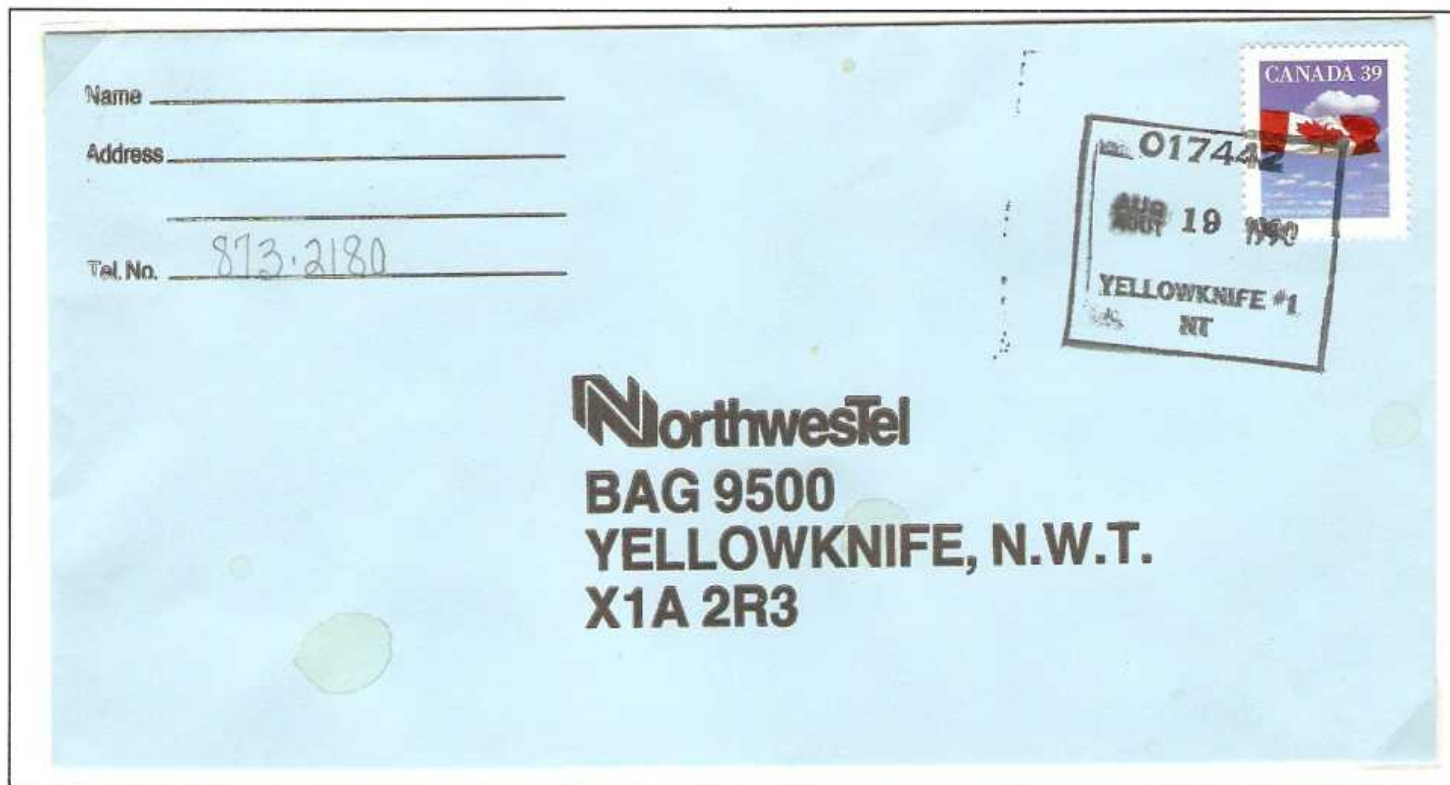
Yellowknife Retail Postal Outlet No. 017442

Subs

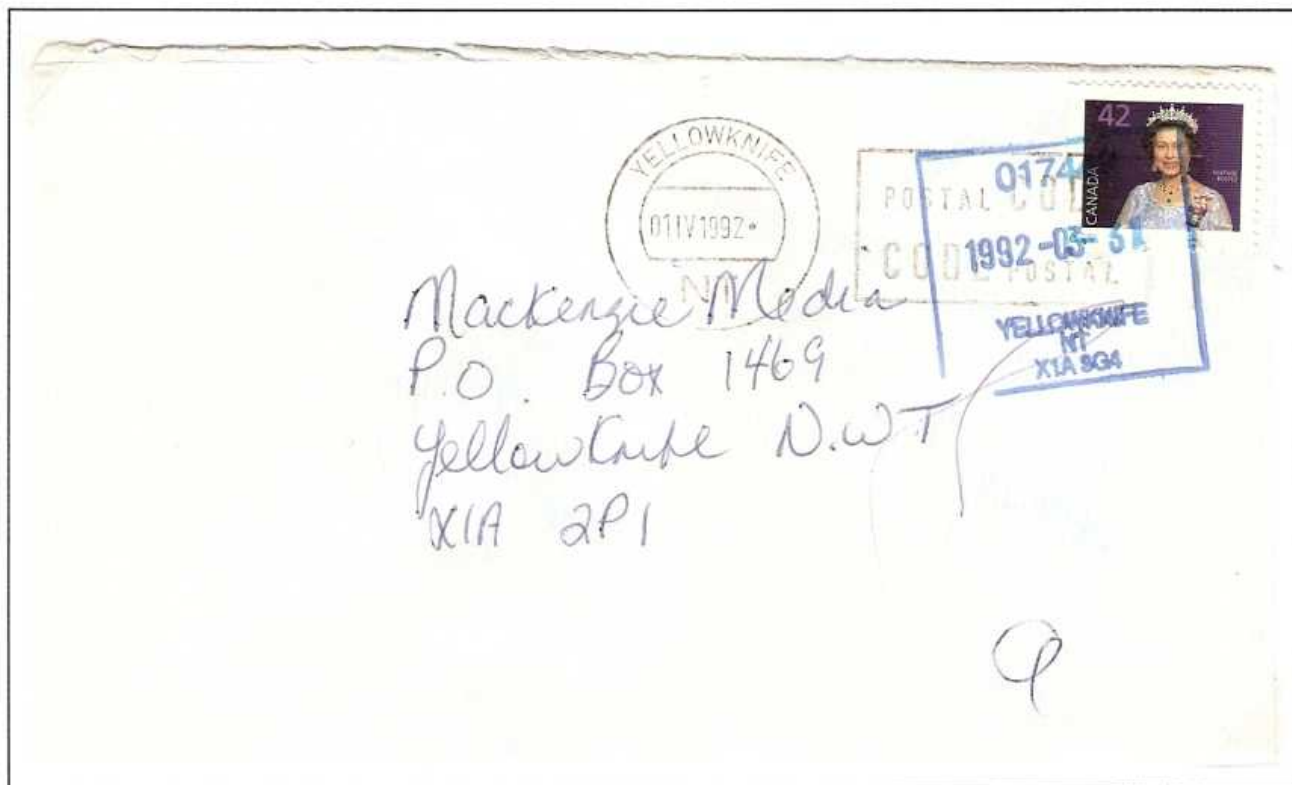
Opened: July 16, 1990
Closed: November 23, 2001

Responsibility Centre Number: 017442 (Accounting)

This post office operated in the Shell Circle K Convenience Store and Gas Bar at 484 Range Lake, in the Frame Lake subdivision in southwest Yellowknife.



Commercial cover showing the first date stamp used at this post office.



Commercial cover showing the second date stamp in blue.

Yellowknife Retail Postal Outlet No. 020079

Subs

Reopened: October 14, 1961

Change in Status: April 1, 1973

Changed to Retail Postal Outlet 020079: December 9, 1991

Closed: November 30, 2001

Money Order Office Number: 8999 (Accounting)

Post Office Computer Organization Number: 690406

Sub No. 1 reopened in the Weaver and Devore Trading Ltd. general store at 3601 Weaver Drive and was changed to a Retail Postal Outlet in 1991 until it closed almost ten years later.

Commercial registered cover showing the second date stamp used at this post office.



Mr. Côté
c/o The Passport Office
Department of Foreign Affairs and International Trade
Ottawa, Ont.
K1A 0G3



Postal Services Receipt

Postal Outlet GST Registration No.	N° d'enreg. de la TPS du comptoir postal
105607188	
Postal Outlet GST (Quebec) Registration No.	N° d'enregistrement de la TVQ (Québec) du comptoir postal
020079	
Customer Name	Nom du client
1995-08-19	
Outlet Date Stamp	Timbre à date du comptoir postal
YELLOWKNIFE NW X1A 2S9	

Reçu des services postaux

Received in payment for Postal Services	Reçu en paiement pour des services postaux
Cost of Service	Coût du service
\$	
GST	TPS
\$	
PST	TVP
\$	
Total	
\$	
Signature	

40-070-020 (91-10)

Receipt showing latest recorded use of the first date stamp.

J. Wong
144 Kestrel
Yellowknife, NT.
X1A 3W1

Yellowknife Postal Outlet No. 073350

Subs

Opened: December 2, 1991
Closed: November 30, 2001

Responsibility Centre Number: 073350 (Accounting)

This post office operated in the Reddi Mart Convenience Store at 60 5014-49th Street in downtown Yellowknife.



Mail bag tag showing the first date stamp used at this post office.

Yellowknife Postal Outlet No. 000064

Subs

Opened: February 19, 2003
Closed: April 2, 2005

Responsibility Centre Number: 000064 (Accounting)

This post office operated in the Yellowknife Direct Charge Coop store at 321 Old Airport Road, in southwest Yellowknife. It used the last date stamp from Yellowknife Postal Outlet No. 073350 until a proper date stamp arrived.



Last day of the temporary date stamp and the first day of the correct date stamp used until the post office closed.