

Postal Stationery Notes

Volume 19 No. 5

June 2004



Figure 1



Figure 2



Figure 3



Figure 4



Figure 5



Figure 6



Figure 7



Figure 8

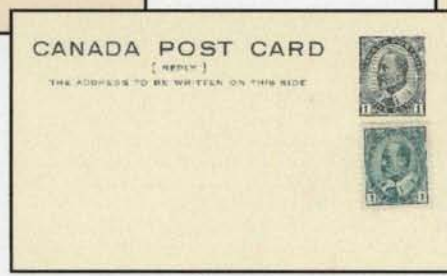


Figure 9

Editor's Notes

Shown on the preceding page are a variety of King Edward postal cards issued a century ago and used for mailings to overseas destinations.

Figure 1.

This 2 cent card, size 130mm x 82mm, was issued to pay for the "Universal Postal Union" rate of 2 cents to overseas destinations. The card was mailed from Vancouver to China May 12, 1904 and arrived in Tsingtau June 17, 1904 (exactly 100 years ago).

Figure 2.

The shown 1 cent card in a somewhat larger regular size (140mm X 86) was mailed in 1912 from Montreal to Finland. Since 1cent was insufficient postage for paying the U.P.U. rate, 10 cent postage due was stamped on the card.

Figure 3.

Also with a 10 cent postage due marking, this 1 cent card was mailed from Edmonton to London, England in 1914 had a 1 penny postage due adhesive added by the British post office.

Figure 4.

Shown again is a 1 cent card, but with a 1 cent King Edward adhesive stamp added to pay for the proper U.P.U. rate. It was mailed from Toronto May 23, 1904 to Mussoorie in India and received on June 20, 1904. Not bad for the transportation available in the world 100 years ago.

Figure 5.

Again, this 1 cent Edward card with the addition of a 1¢ adhesive stamp had the proper overseas rate. Mailed in March 1912 it had the King George V Admiral postage stamp attached, which already was issued at that time, but not yet issued at that time was the "Admiral" U.P.U. card.

Figure 6.

Shown is the 1 cent red card with the type of heading usually used for business mailings with space for advertising, but with a proper 1 cent adhesive added, there must have been no objections for this mailing to Germany in 1906.

Figure 7.

This 1¢ card mailed to Belgium in 1907 was overpaid 3 cents with two 2¢ Edward adhesive stamps. On the back of the card is monetary information from the Sovereign Bank of Canada in Toronto and the

overpaid postage may be a reason to make sure the card arrives at their destination.

Figure 8 and 9.

Shown at figure 8 is the front of the message half of a 1¢ & 1¢ black King Edward reply card. Sent to Germany and redirected to Paris, France in 1905 it still has the 1¢ reply half attached (*see figure 9*) and for some strange reason it also has a 1¢ adhesive added, although Canadian postage never was valid in France.

In this issue we continue with Earle Covert's latest listing of the Meteorological Envelopes.

Dick Staecker

.....

What's New

in Postal Stationery

ENVELOPES

A new date coded envelope was found by Pierre Gauthier of the size #10 bird (Scarlet Tanager) envelopes in packs of 25 from boxes of 500 with the production date 2004.03.15.

To all collectors, please be aware, that the dates, starting from the 2003.02.03 envelopes, are now under the flap, therefore very hard to detect on used envelopes and are easy to confuse with the first issued Scarlet Tanager envelopes which had no date on the back.

CARDS

To continue the series of tourist attractions prepaid post cards a new prepaid postcard was issued with the same stamp design but without value on the address side and also in large size on the picture side as on the St. Joseph's Oratory stamp issued in booklets of six stamps.

The card was available at Saint Joseph's Oratory in Montreal on the first day of issue of the stamp (2004-04-02). Canada Post article number 262114. Available in packs of ten for \$12.50 (a bargain). Packs of ten have a manufactured date of 2004-03-12. Special cancellations were available at the oratory (one in French and one in English) and also at the Lakeshore Stamp Club annual bourse and exhibition in Dorval.

Postcard Factory cards

Two older prepaid Postcard Factory cards with exactly the same picture on the backs, but without borders (the picture up to the edge) were discovered by Peter Zariwny as he was on holiday at Lake Louise and in Banff.

The bar codes on both cards are different from the original issues. The newly found cards are CO42V 64292 60013 and CR149 643 60064.

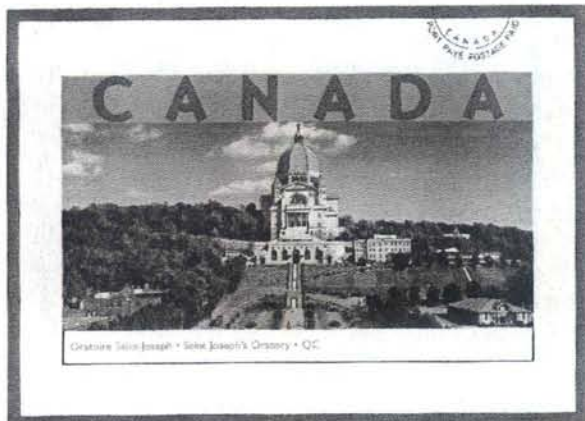
Please everyone be on the lookout as the cards are now being reprinted without borders.

÷ ÷ ÷

Two notes from Robert Lemire:

I have often muttered that the 2001 series of Tourist Attraction cards never really seemed to appear in POs, only through the philatelic service. Well, almost the entire set is now available (as separate cards) on a rack in the Pembroke PO--mixed right in with cards from later series and PCF issues.

Does anyone have a spare copy (or two) of the year of the monkey card with the white band at the right (bar code 63491 02885)? When I went to mount my copies, I found I had damaged them (all 5 copies!) in storage.



Picture side of the Saint Joseph's card

Canada Post indicates the card is "sold out".

Robert Lemire

1-613-584-1574 rlemire000@sympatico.ca

XPRESSPOST

A new discovery by Chris Ryan:

A Type 5 GO xpresspost envelope has appeared: Similar to Type 4 in wrt size of logo on front and the lack of roulettes in the sealing flap.

BUT... the knife is different... the flaps have rounded corners... the adhesive on the sealing flap is a solid strip rather than streaky... the date code is "03" with the 5 in the circle **CROSSED OUT** by a line rather than simply omitted. Also the first line of the French text on the back has the word "grammes" added after "-500" compared to earlier issues.

Everyone have a nice Summer



The new CR 149



DUES: Postal Stationery Study Group dues are Can. \$8.00 or equivalent per volume of six issues.

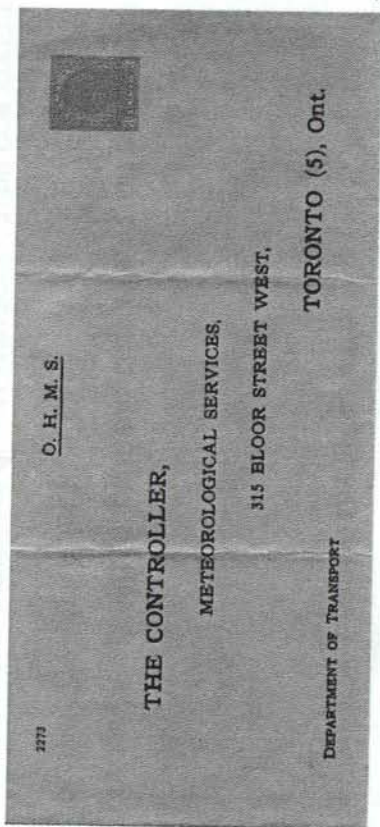
Dues are now payable if you mailing label reads V19#1. Please renew soon and make your remittance payable to 'JOHN GRACE' **not** to BNAPS or the Postal Stationery Study Group.

Dues or any change of mailing address should be sent to the Sec./ Treasurer John Grace, 734 Aspen Rd. Pickering, On. L1V 4H2. E-mail jandmgrace@sympatico.ca

All information for the newsletter, and correspondence about the study group, should be addressed to Dick Staecker, 384 Regal Drive, London, On. Canada N5Y 1J7, phone (519) 455-9715, E-mail may be sent to dstaecker@rogers.com

✦ ✦

DEN534-45XX 3 ¢ red GEORGE VI, 229 x 102, kraft, cross flap

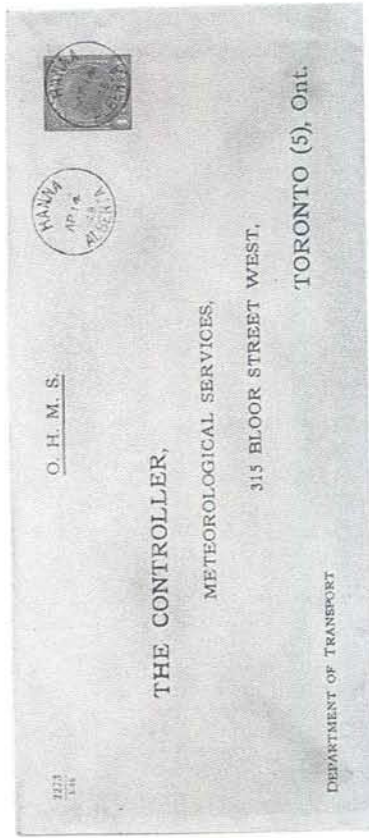


- I. 2273 (over) blank // O.H.M.S. // The Controller, / METEOROLOGICAL SERVICES, / 315 Bloor Street, West, / TORONTO (5), Ont. // PG
DEPARTMENT OF TRANSPORT

METEOROLOGICAL ENVELOPES

DEN535-37a 4 ¢ red GEORGE VI, 229 x 102, kraft / manila cross flap

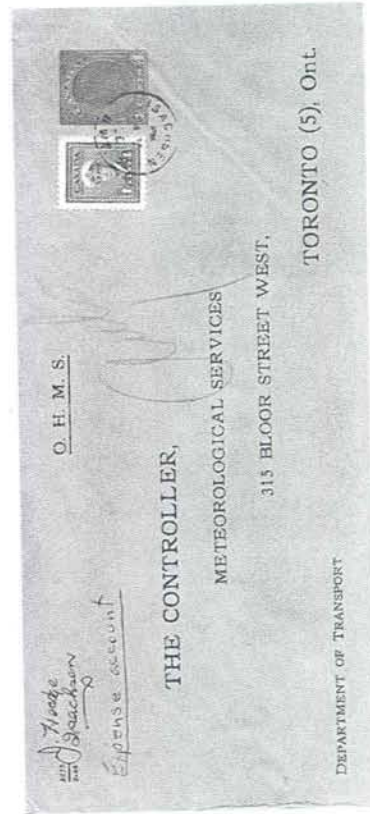
40.00 40.00



1

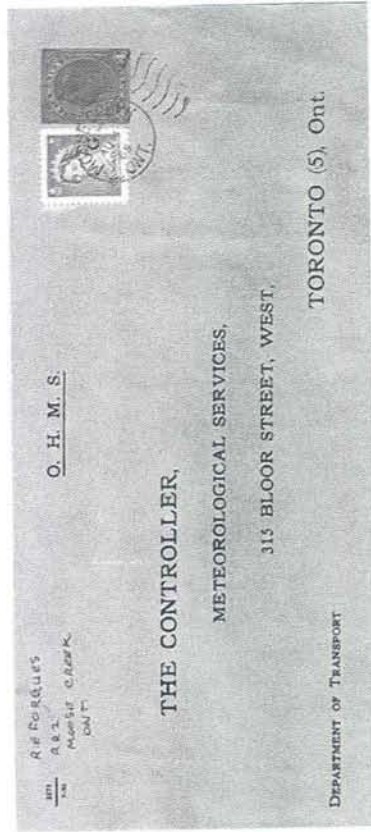
2

1. 2273 (over) 1-44 // O.H.M.S. // THE CONTROLLER, / METEOROLOGICAL SERVICES, / 315BLOOR STREET, WEST, / TORONTO (5), Ont. // DEPARTMENT OF TRANSPORT (used MY 8 48)
2. 2273 (over) 5-45 // O.H.M.S. // THE CONTROLLER, / METEOROLOGICAL SERVICES, / 315BLOOR STREET, WEST, / TORONTO (5), Ont. // DEPARTMENT OF TRANSPORT (used AP 14 48)



3

3. 2273 (over) 2-46 // O.H.M.S. // THE CONTROLLER, / METEOROLOGICAL SERVICES, / 315BLOOR STREET, WEST, / TORONTO (5), Ont. // DEPARTMENT OF TRANSPORT (used June 25, 1948)



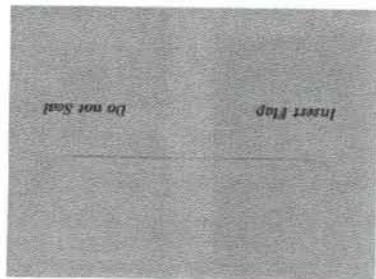
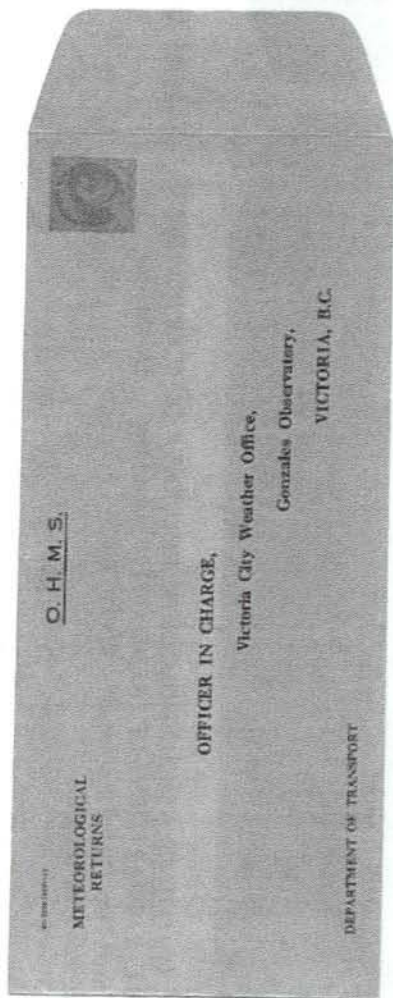
4

4. 2273 (over) 7-52 // O.H.M.S. // THE CONTROLLER, / METEOROLOGICAL SERVICES, / 315BLOOR STREET, WEST, / TORONTO (5), Ont. // DEPARTMENT OF TRANSPORT (used AU 4 65 but also DEC 22, 1959. PG has used Nov 23, 1959)

METEOROLOGICAL ENVELOPES

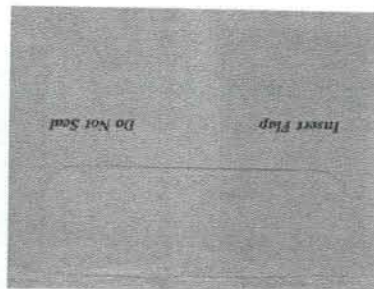
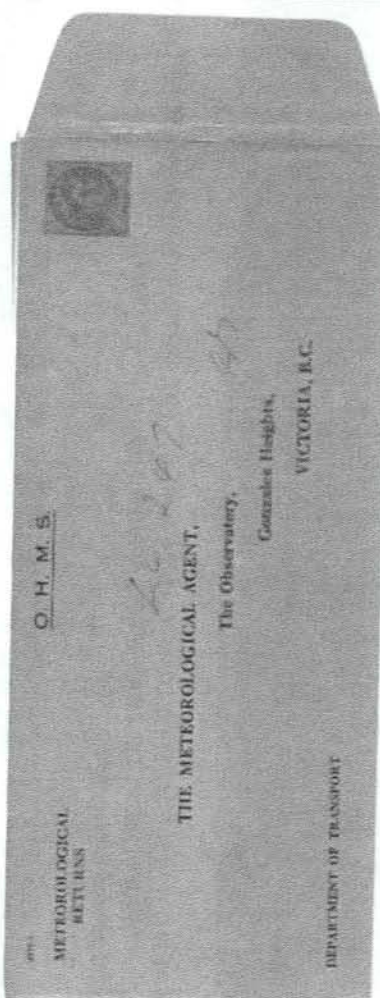
DEN539-40d 2 ¢ green WILDING, #10, kraft, centre seam

25.00 25.00



BW

1. 61-2228 (2271-1) / METEOROLOGICAL RETURNS // O.H.M.S. // OFFICER IN CHARGE, / Victoria City Weather Office, / Gonzales Observatory, / VICTORIA, B.C. // DEPARTMENT OF TRANSPORT /// Insert Flap Do Not Seal



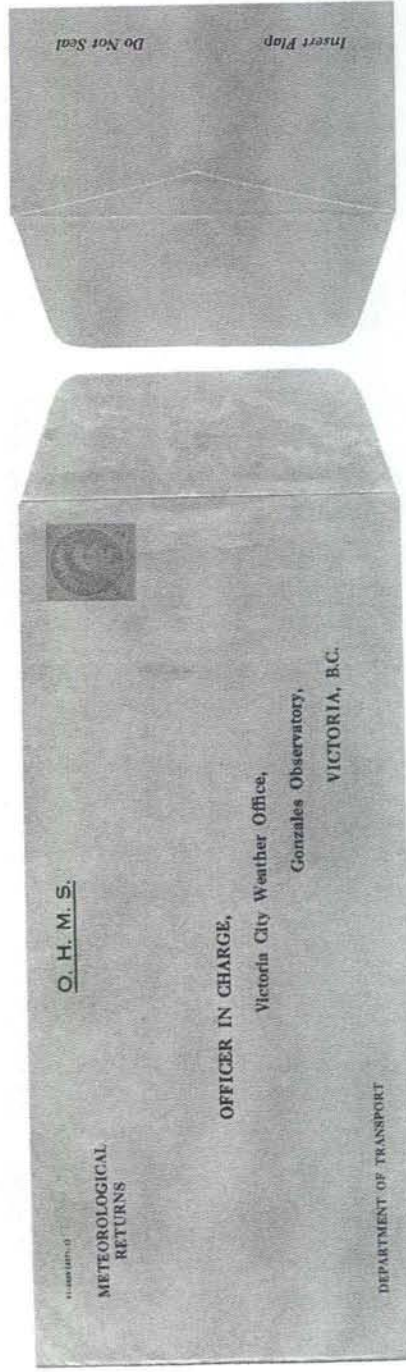
BW

2. 2271-1 / METEOROLOGICAL RETURNS // O.H.M.S. // THE METEOROLOGICAL AGENT, / The Observatory, / Gonzales Heights, / VICTORIA, B.C. // DEPARTMENT OF TRANSPORT /// Insert Flap Do Not Seal
- ungummed round pointed flap at right

METEOROLOGICAL ENVELOPES

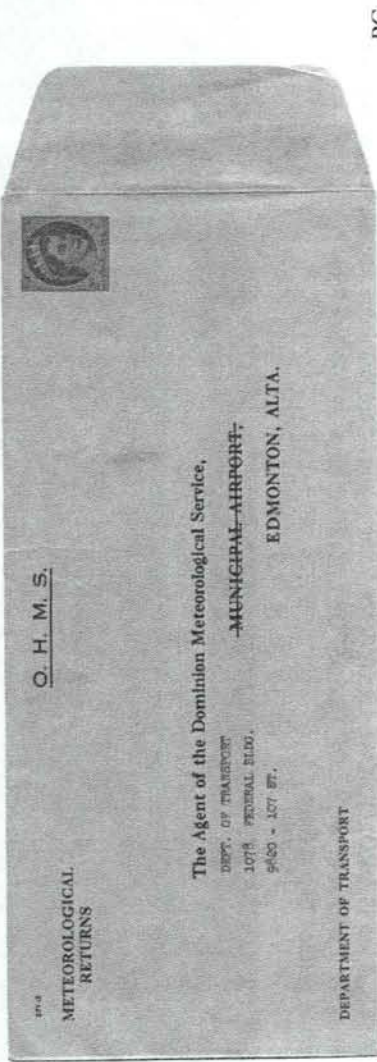


3. 2271-1 (over) 4-61 // O.H.M.S. // METEOROLOGICAL RETURNS // THE METEOROLOGICAL AGENT, / The Observatory, / Gonzales Heights, / VICTORIA, B.C. // DEPARTMENT OF TRANSPORT /// Insert Flap Do Not Seal
- ungummed round pointed flap at right



4. 61-2228 (2271-1) // O.H.M.S. // METEOROLOGICAL RETURNS // OFFICER IN CHARGE, Victoria City Weather Office, / Gonzales Observatory, / VICTORIA, B.C. // DEPARTMENT OF TRANSPORT /// Insert Flap Do not Seal
- back reads: Insert Flap Do not Seal (small letters for "not").
- ungummed rounded flap at right.

METEOROLOGICAL ENVELOPES



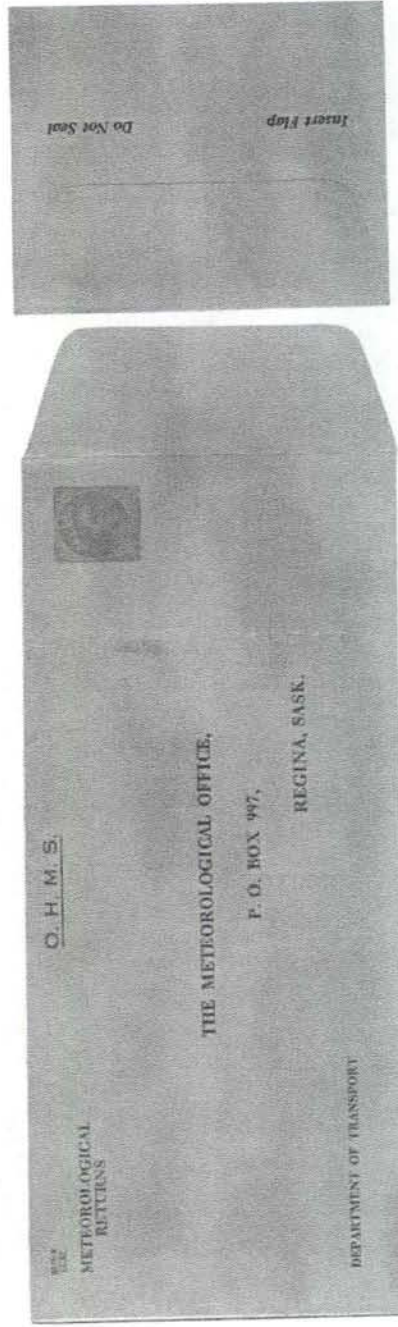
5 271-2 // O.H.M.S. // METEOROLOGICAL / RETURNS // The Agent of the Dominion Meteorological Service, / DEPT. OF TRANSPORT / MUNICIPAL AIRPORT, / EDMONTON ALTA. // DEPARTMENT OF TRANSPORT /// Insert Flap Do Not Seal

or 271-2 // O.H.M.S. // METEOROLOGICAL / RETURNS // The Agent of the Dominion Meteorological Service, / DEPT. OF TRANSPORT / 1078 FEDERAL BLDG. / 9820 - 107 ST. / MUNICIPAL AIRPORT, / EDMONTON ALTA. // DEPARTMENT OF TRANSPORT /// Insert Flap Do Not Seal
- ungummed rounded flap at right.

METEOROLOGICAL ENVELOPES



6. 2271-2 // O.H.M.S.// METEOROLOGICAL / RETURNS // The Agent of the Dominion Meteorological Service, / MUNICIPAL AIRPORT, / EDMONTON ALTA. // DEPARTMENT OF TRANSPORT /// Insert Flap Do Not Seal
- ungummed round pointed flap at right



7. 2271-3 (over) 10-56 // O.H.M.S.// METEOROLOGICAL / RETURNS // THE METEOTOLOGICAL OFFICE, / P. O. BOX 997, / REGINA, SASK.. //
DEPARTMENT OF TRANSPORT /// Insert Flap Do Not Seal
- ungummed round pointed flap at right

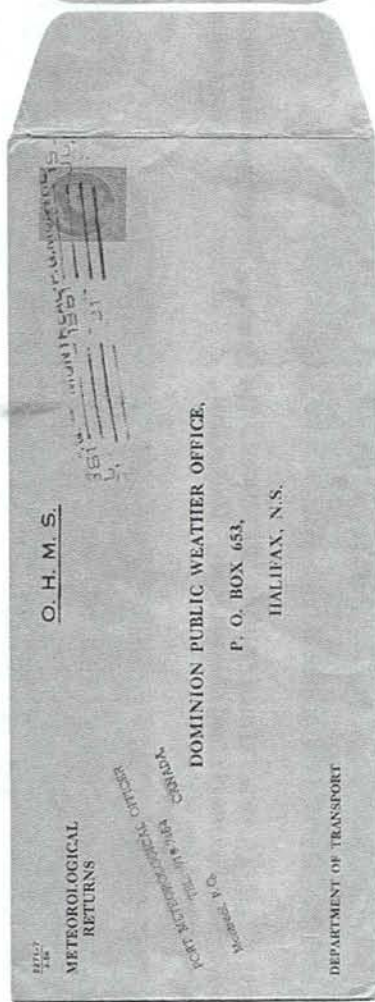
METEOROLOGICAL ENVELOPES



BW

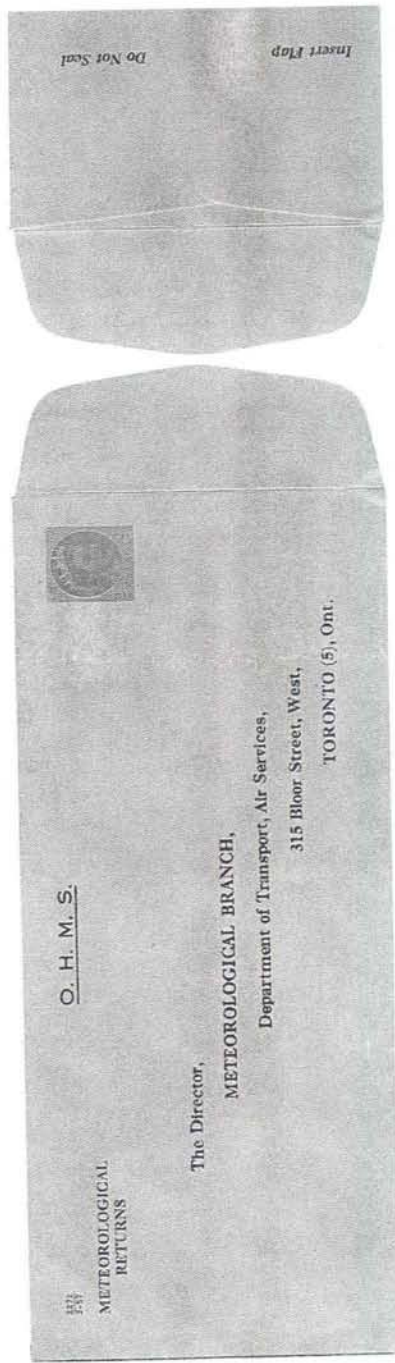
- 8 2271-5 (over) 9-55 O.H.M.S. // METEOROLOGICAL / RETURNS //
 TRANSPORT /// Insert Flap Do Not Seal

/ (address label over address) / DEPARTMENT OF



9. 2271-7 (over) 3-58 // O.H.M.S. // METEOROLOGICAL / RETURNS // DOMINION PUBLIC WEATHER OFFICE, / P. O. BOX 653, / HALIFAX, N. S.
 /// Insert Flap Do Not Seal
 - ungummed round pointed flap at right (JU? 31 1961)

METEOROLOGICAL ENVELOPES



10. 2272 (over) 3-57 // O.H.M.S. //METEOROLOGICAL / RETURNS // The Director, / Meteorological Branch / Department of Transport, Air Services, / 315 Bloor Street, West, / Toronto (5), Ont. /// Insert Flap Do Not Seal
- ungummed round pointed flap at right



11. 2272 (over) 2-59 // O.H.M.S. //METEOROLOGICAL / RETURNS // The Director, / METEOROLOGICAL BRANCH / Department of Transport, Air Services, / 315 Bloor Street, West, / TORONTO (5), Ont. /// Insert Flap Do Not Seal
- ungummed rounded flap at right