BNAPEX'85THE STUDY GROUP MEETING

The 1985 Postal Stationery Study Group meeting at BNAPEX was held in Calgary on September 13th. Attendance was good, and we were particularly pleased that one of our British members, George Manley, was able to attend.

The organizers of the convention had requested the study group coordinators to arrange for a short general interest seminar at the beginning of each study group meeting. Thus, your editor gave a completely biased presentation on "The Advantages of Collecting Stationery Instead of Stamps". The talk generated a fair bit of discussion, and several members added interesting comments about the items shown on the slides. Afterwards, Earle Covert showed two partially used books of Canadian Pacific express advice cards. The book containing several rouletted 4-on sheets was particularly interesting.

NEWFOUNDLAND USED REGISTERED FORMULA ENVELOPE SIZE D REPORTED

During the Study Group meeting Jeff Switt showed a recently purchased used copy of the size D Newfoundland registered formula envelope. In earlier articles in PSN (Vol. 4, pg. 17, 33) we had noted that no used copy of this envelope had been reported. The new find is flap type 1 (rounded) and bears an April 21, 1947 postmark.

EXHIBITS

There was only one postal stationery exhibit at BNAPEX (although there was the usual scattering of stationery in several other exhibits). Congratulations go to Earle Covert for his spectacular display of Victorian stationery. This exhibit was awarded a vermeil.

A SURVEY OF THE GEORGE VI 1c CIGARETTE CARDS

In the last issue of PSN we asked for information on the 1c prestamped cards used by cigarette companies during the second world war to acknowledge gifts of cigarettes to servicemen. Information was received by mail from regulars John Aitken and Colin Campbell. A late night session at BNAPEX (Walton, Covert and Lemire) then made some order out of the available information.

Postal Stationery Notes is the newsletter of the BNAPS Postal Stationery Study Group, and is co-edited by Earle Covert and Robert Lemire. All information for the newsletter, and correspondence about the study group, should be addressed to Robert Lemire, Box 549, Pinawa, Man., Canada ROE 1L0.

There appear to have been two users of the prestamped cigarette cards. One was Tuckett Limited (Wings Cigarettes and Buckingham Cigarettes), the other was Imperial Tobacco (Sweet Caporal Cigarettes and other tobacco products). A description of the basic types is given in the table.

	<u>Webb #</u>	<u>description</u>	<u>picture on front</u>	<u>user</u>
1)	P66?	as P66 but perforated top and/or bottom	none	Tuckett
2)	P66b	rouletted top and/or bottom	none	Tuckett
3)	P66b	rouletted top and/or bottom	none	Imperial
4)	P66b	rouletted top and/or bottom	Buckingham package (Fig. 1)	Tuckett
5)	P66b	rouletted top and/or bottom	soldier girl (Fig. 2)	Imperial



Figure 1



Figure 2

The printing on the forms employed by each company changed during the period of use, and some of the cards have printed (form ?) numbers on the receipt stubs (on the back of the post cards). If there is sufficient interest, and more information about these printing varieties is reported, it will be given in a future issue of PSN.

TAGGING VARIETIES

Pierre Gauthier is the first member to report a tagging variety on the new 34¢ envelopes. He has sent along two #10 envelopes that differ markedly in paper fluorescence. One has a 31mm x 1 1/2mm tagging bar. The tagging bar on the other envelope measures 29mm x 2mm.

Your editor has also noticed that the tagging bar on the #10 envelopes often wraps over the top and slightly onto the back of the envelopes. This indicates the tagging is applied before the envelopes are folded.

MORE TORONTO POLLING CARDS

Some additions to the list of Toronto precancelled polling cards (PSN Vol. 2, pg.14, 27; Vol. 3, pg.36) have been recorded.

P29b (die III) Jan. 1, 1929 (printing B - see PSN Vol. 4, pg. 31)
 P66c Jan. 1, 1943 Part 2
 P75a Dec. 7, 1953 Part 1

Also, two varieties have been noted on the P83a card (type A) for the Dec. 6, 1954 election. On some cards the word "identification" has been printed as "indentification". I would be interested in knowing the relative quantities of the two cards, and determining for which polling areas each variety was used. Please send any reports on this card to me or to the editor of PSN.

George Manley

GRAND TRUNK RAILWAY CARDS AND GRAND TRUNK RAILWAY CARD ERPS

Despite our earlier proclamation that the Grand Trunk Railway and Canadian National Railway ERPs would be listed by card series only, rather than by individual card, we are going to list them as we have for the CPR cards. There are two reasons for this. First, it may be worthwhile to lay out these rather confusing series for members in chronological fashion so that a better understanding can be gained as to what was issued when, and how long or brief a span of use each group of cards had. I made an attempt at this in the 2nd edition of the "C" section of the Higgins and Gage Catalogue - which members might be interested to know was published in 1974, but written (at least the Canadian section) in 1971 - but can now correct some errors and bring some additional information to the listings. Second, there is still a great deal about the GTR and CNR cards we do not know, which only the reporting of more ERPs can help clear up.

the Victorian cards (on Webb P18) (listed by Webb number)

GTR-A5	Aug. 18, 1898 (1)	GTR-B1	Aug. 12, 1901
GTR-A24	Jan. 27, 1899	GTR-B3	Sept. 16, 1898
GTR-A26	Dec. 21, 1898	GTR-B18	Apr. 20, 1899
GTR-A35	Oct. 26, 1898	GTR-B23	Mar. 14, 1899
GTR-A45	Nov. 19, 1898	GTR-B32	May 20, 1899
GTR-A46	Oct. 29, 1898	GTR-B36	Mar. 23, 1901
GTR-A57	Nov. 5, 1898	GTR-B38	May 23, 1901
		GTR-B39	Aug. 27, 1899
		GTR-B60	Oct. 5, 1899

(1) ERP for the set

It appears the seven "A" cards and GTR-B3 actually comprise the first issue. Various substitutions were made across the next few years, and, therefore, the earliest dates on these cards are important in determining just when these substitutions were made. At the end of the period of

printing of the Victorian cards, it is quite certain that the eight views in use were B1, B3, B18, A24, B36, B38, B39 and B60. It is these same eight views that were carried into the first Edward issue that followed.

the first Edwardian Issue (views in green on Webb P23)

GTR-D1	Apr. 20, 1904	GTR-D36	Dec. 17, 1903
GTR-D3	? ? , 1903	GTR-D38	Oct. 30, 1903 (1)
GTR-D18	Oct. 4, 1904	GTR-D39	May 23, 1904
GTR-D24	Nov. 19, 1903	GTR-D60	May 15, 1905

(1) ERP for the series

The views in this series are the same as those on the corresponding Victorian cards. This group of cards appears to have been in use for a year or less.

new views

1904 - in sepia on P23

GTR-C4a	Oct. 5, 1905
GTR-C6	Oct. 7, 1907
GTR-C10	?
GTR-C12	July 24, 1905
GTR-C34	?
GTR-C40	Sept. 22, 1904 (1)
GTR-C43	Aug. 15, 1905
GTR-C44	Nov. 16, 1904

1907 - in green on P23

GTR-D4a	?
GTR-D6	?
GTR-D10	Apr. 30, 1907
GTR-D12	Feb. 24, 1908
GTR-D34	May 28, 1908
GTR-D40	?
GTR-D43	Mar. 19, 1907 (1)
GTR-D44	July 19, 1907

The above 1907 series seems to have been in use for a year or less.

1907 - new views in green on P23

GTR-D7	Mar. 10, 1908	GTR-D31	June 4, 1908
GTR-D11	?	GTR-D40a	Feb. 4, 1908
GTR-D22	June 19, 1908	GTR-D48	Dec. 30, 1907 (1)
GTR-D30	Apr. 14, 1909	GTR-D49	July 9, 1910

1910 - new views in green on P23

GTR-D8	Aug. 30, 1910	GTR-D37	Aug. 21, 1912
GTR-D20	Mar. 10, 1911	GTR-D47	Aug. 16, 1910 (1)
GTR-D21	Oct. 25, 1910	GTR-D55	Dec. 27, 1911
GTR-D29	Feb. ? , 1912	GTR-D58	Jan. 18, 1911

1912 - new views in green on P23

GTR-D2	Dec. 2, 1912 (1)	GTR-D16	Apr. 8, 1913
GTR-D9	Mar. 24, 1914	GTR-D17	Nov. 14, 1913
GTR-D13	Dec. 3, 1913	GTR-D41	?
GTR-D14	Dec. 5, 1913	GTR-D55a	Jun. 27, 1913

(1) ERP for the series

(to be continued)

Bill Walton

ERP UPDATES

This issue we have updates from John Aitken, Steven Whitcombe, Horace Harrison, Robert Lemire and Bill Walton.

P29c Aug. 5, 1922 (1)	P30 Feb. 7, 1930 (1)	P34k Aug. 22, 1929
P78b Oct. 22, 1943	P99 Jun. 30, 1967	EN70a Mar. 8, 1954
EN72a Apr. 1, 1954	W21c Jul. 8, 1953	

on CPR pictorial cards

CPR-A67 Feb. 4, 1919	CPR-A70 Apr. 8, 1918
CPR-A78 Apr. 8, 1918	CPR-B69 Aug. 3, 1922
CPR-F73 ? ? , 1922 (2)	CPR-I74 Aug. 1, 1931 (3)

- (1) text date
- (2) The text date on this earnings and expenses card is May 29, 1922. This is an erp for the series, and predates our erp on P34d by two days.
- (3) This is an ERP for the series, and predates our ERP for P49 by more than six weeks.

Bill Walton

POST OFFICE DEPARTMENT ORDERS ABOUT EARLY CANADIAN POSTAL STATIONERY

Allan Steinhart has forwarded photocopies of two early Canadian Post Office Department "Orders" that are of particular interest to collectors of Canadian Postal Stationery.

The first item is Department Order No. 22 dated at Ottawa, 6th October, 1877. Several sections of this document are related to the 1877 envelopes.

STAMPED ENVELOPES

1. Letter Envelopes bearing an impressed Postage Stamp of One Cent, and of Three Cents, respectively, are ready for issue to Postmasters, and through their Agency to Stamp Vendors, for sale to the public.

2. These Envelopes when issued to Postmasters will be charged to them, and will have to be accounted for by them, at the following rates:-

One Cent Envelopes	\$1.30
Three Cent do No. 1 size	3.30
do do No. 2 do	3.35

3. The Three Cent Envelopes are of two sizes, No. 2 being larger than No. 1, and Postmasters, when asking at any time for a supply, will be careful to state how many of each size they want.

4. Postmasters and Stamp Vendors will be required to sell these Envelopes at the above rate per hundred to the public, and when a request is made for a single Envelope or for any number less than a hundred, the charge for the same must be made by the Postmaster or Stamp Vendor as near the exact proportionate value, as compared with the above rate per hundred, as the fraction will permit, without loss to the Postmaster or Stamp Vendor; thus ten of the Three Cent Envelopes, No. 1 size, should be sold for thirty-three cents, five for seventeen cents, and two for seven cents.

5. When used these Envelopes will represent the pre-payment of postage to the amount of the Stamp impressed thereon, and when used for letters weighing more than 1/2 an oz., or on which the pre-payment is required of more than is represented by the impressed Stamp, the difference may be affixed by ordinary Postage Stamps.

6. An impressed Stamp must be carefully cancelled by Postmasters when the Envelopes are posted.

7. The impressed Stamp cut from an Envelope cannot be used for pre-payment of Postage in any shape, and when detached from the Envelope on which it was impressed, it loses all value as a Postage Stamp.

8. In the accounts rendered by Postmasters, the amounts of Stamped Envelopes received from the Department, and sold to the public or to Vendors, are to be added to the Postage Stamp items.

L. S. HUNTINGTON,
Postmaster General.

Memo.- Stamped Envelopes are sold to the public at the following prices by Postmasters and Stamp Vendors.

One Cent Envelopes ...	\$1.30	13 cents.	2 cents or 3 cents for two.
Three Cent do.			
No. 1 size.	3.30	33 cents.	4 cents or 7 cents do
do. do.			
No. 2 do.	3.35	34 cents.	4 cents or 7 cents do

The second "Department Order" is No. 26 dated at Ottawa, 11th April, 1882.

NEW FORM OF ONE CENT POST CARD

A new form of one cent Canada Post Card has been prepared, and is now ready for distribution to Postmasters in fulfillment of such requisitions as they may make for further supplies of one cent cards.

The new card is larger than the card hitherto supplied, and the one cent postage stamp being impressed thereon by a different process will have a somewhat different appearance, but the device for the stamp remains the same. The marginal rim on the face side has been discontinued leaving more room for the address.

The regulations as to the use of the one cent post cards, and their sale at the face value to the Public by Postmasters and Stamp Vendors, remain unchanged.

Post cards are to be postmarked with the date stamp only on the face or address side of the card, both at the office where posted and at the office of delivery, leaving the other side of the card entirely clear for the use of the sender. In postmarking, care must be taken to avoid interfering with the address.

Post cards cannot be registered.

JOHN O'CONNOR,
Postmaster General.

It is interesting to note that our ERP for the 1882 post card is April 12, 1882 - one day after the Department Order. However, our earliest postmark on any of the 1877 envelopes is Nov. 19, 1877 (on Webb EN4b), more than a month after the Department Order. Clearly, we should be watching for earlier dates on the envelopes.

POSTAL STATIONERY LITERATURE IN THE BNAPS LIBRARY
(continued from PSN Vol. 4, pg. 33)

Canada and General (continued)

- F-25 - Canadian "Padpost" Postal Bands, by E.A. Richardson, 1961, 2pp., ill., art.
- F-37 - The Air Letter Forms of Canada, by N.S. Bond, 1952, 2pp., ill., art.
- F-98 - Canadian Precancelled Stationery, by F.D. Rogers, 1942, 11 pp., ill., art.
- F-232 - The Letter Cards of Canada, by N.S. Bond, 1951, 1p., ill., art.
- F-434 - Canadian Padposts - Pictorial Postals, by E.A. Richardson, 1959, 2pp., ill., art.
- F-499 - Making Stamp Dies for Nesbitt Envelopes, by H. Dickinson, 1956.
(ed. note: This is about the U.S. Nesbitt envelopes, but might be of interest to someone interested in the Canadian envelopes produced by Nesbitt.)
- F-574 - Canadian Pacific Postal Stationery and Related Mail Matter, by H. Harrison, 1970.
- F-579 - Canadian Cigarette Cards, W.W.II, by E. Richardson, 1961.
- F-594 - Early Canadian Pikposts, by E. Richardson, 1961.
- F-624 - Canada's Stamped Envelopes of the Edward Era, by H. Harrison, 1971.

- F-625 - Specimen Election Return Envelopes, by M. Arons, 1971.
- F-678 - Canada's Aerogramme Story, by G. Parsons, 1967.
- F-963 - Canada's Special Order Envelopes, by N. Bond, 1956.
- F-969 - The 15¢ Canada Goose Aerogramme of Canada, by R. Malott, 1972.
- F-990 - Postal Stationery - A Collectors Guide to a Fascinating World of Wild Pursuit, by R. Mott, 1968.
(ed. note: general postal stationery)
- F-1063 - Canada's First Post Card, by M. Harvey.
- M-5 - B.N.A. Postal Stationery - Some Areas for Specialization, by E.A. Richardson, 1968, 22pp., ill., paper.

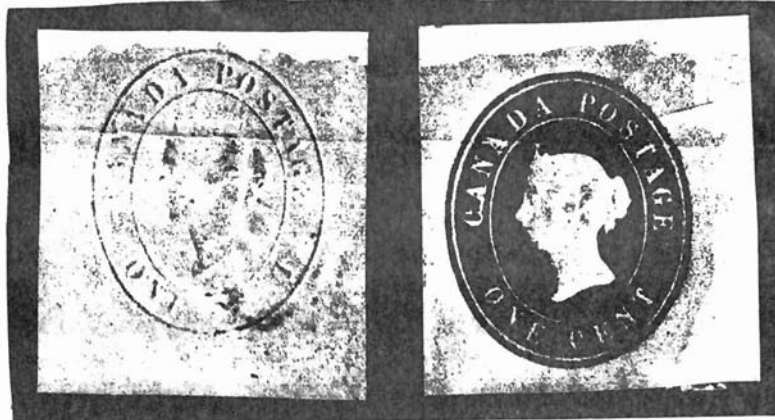
Newfoundland

- F-42 - Newfoundland Postal Stationery, by N. Bond, 1952, 2pp., ill., art.
- F-222 - Newfoundland - Plating the 1¢ Card of 1880, by Wm. and D.C. Meyerson, 1951, 3pp., ill., art.
- Top-1-6 - Newfoundland Postal Stationery, by R.W. Trickey. 1944, 2pp., art.

Other articles on BNA Postal Stationery have appeared in BNA Topics over the years. Volumes of Topics can also be borrowed from the BNAPS library. It is hoped that a more detailed listing of these other articles (as well as those that have appeared in Postal Stationery) can be made available in a future issue of PSN.

AN UNLISTED ALBINO ENVELOPE

Bill Grosnick Sr. has sent photocopies of a previously unreported albino envelope. It is an albino of Webb EN3 (batonne lines 18mm apart).



albino

normal