
PRECANCELS CANADA

THE PERIODIC NEWSLETTER OF THE BNAPS PRECANCEL STUDY GROUP

ISSUE No. 6 - WINTER 2016/2017

CHAIRMAN'S MESSAGE

YOUR RESEARCH IS IMPORTANT

Andy Ellwood

Interest in collecting and cataloguing precancels has been a component of philately for many years, going back to the late 19th century. It naturally focused on the stamps that had clear, identifiable precancels. The precancels were obvious to the naked eye, allowing specialists to easily address identified varieties.

In more recent years, the costs of rarer stamps encouraged collectors to start looking for other ways to satisfy their collecting interests. As we know, the market often offers large collections of precancels at reasonable prices and they are often purchased by collectors seeking varieties.

The obvious varieties are the colours and shades, their usage (on covers) and the improper applications by the printers (inverts, doubles, etc). Less obvious are the broken letters, nailheads, perfins, and revenues.

Buying a large accumulation (I hesitate to use the word *collection*) of precancels can provide hours of pleasure (and eyestrain) looking for those unusual printing flaws. They seldom produce any real 'finds'. Still, it is an easy and cheap way to extend one's interest in precancels.

Of course, there is the problem of identifying the variety as often there are no written reference works to guide you. But then, we get bitten by the bug of publishing our findings. It is natural to want to write a book about what has been found, but many are hesitant about doing so. The easiest way to start is to write a short article and publish it in this newsletter.

Who knows, your research may open up a whole new area of study and interest for precancel collectors.

COMING EVENTS

- January 14-17, 2017 Brantford Stamp Club, Annual Show & Bourse
- January 21, 2017, 68th Annual CATHEX Bourse
10AM -5PM Grantham Lion's Club, 732 Niagara Street, St. Catherine's, ON Contact: David Hillier, 905-641-2316
- January 28, 2017, OMPA Show & Bourse (Okanagan Stamp Clubs)
Seniors Activity Centre, 9832 Bottom Wood Lake Road, Lake County, BC

- March 11, 2017, Oakville Stamp Show
- March 25, 2017, Edmonton Spring National Stamp Show
- May 25-28, 2017, Royal • 2017 • Royale, 89th Convention of The RPSC, Boucherville, Quebec

Editor's Note: This all the information available at the time of publication. For more information, contact the sponsoring organization or visit their web sites.

DON'T BLAME THE EDITOR

WHY IS THIS ISSUE KIND OF SKIMPY?

WE CAN'T PUBLISH WHAT THE MEMBERS DON'T SUBMIT! (Get the subtle hint?)

DON'T MISS OUT!

The third section of the Duncan McDonald Precancel Collection will be sold at Ocean Park Auctions on February 12th, 2017. If you want to participate and have not registered, contact David at: david@OceanParkStampAuction.com

WHAT HAVE YOU DONE FOR YOUR STUDY GROUP LATELY?

The **POSTAL HISTORY SOCIETY OF CANADA** *offers its members:*



APS affiliate 67
PHS Inc. affiliate 5A
RPSC affiliate 3

Join today!

- A gold-medal winning quarterly publication, the *PHSC Journal*
- A research website with searchable:
 - Back issues of the *PHSC Journal*
 - Post office listings of Canada
 - Up-to-date Canadian cancellation databases
 - Articles and exhibits
- Ongoing online project on BNA Postal Rates
- Study groups, many of which publish their own newsletters and databases
- Postal history seminars and awards
- Research funds
- The fellowship and knowledge of other Canadian postal history enthusiasts
- www.postalhistorycanada.net

For a membership application form please visit our website or contact the Secretary:

EMAIL: secretary@postalhistorycanada.net

EDITOR'S MESSAGE

**SOMETIMES, IT JUST DOESN'T PAY
TO BE POLITE**
Larry Goldberg

Bad News 1. My message in the last issue was clearly one of sincere thanks for all of the articles I received from our members. Unfortunately, I think it went to your heads and you smugly assumed that you had satisfied my nagging for some prolonged period of time.

Lo and behold, there were so few submissions that we now have a comparatively skinny issue.

Bad News 2. We recently had a power spike in our area and I have a feeling that, in spite of the fact that nothing seems to have been lost, something may have been. So, if you have sent me anything and you have not seen it published in the newsletter, please let me know.

More News. Due to some other obligations, I may have to give up editing this publication. At this time, I still not have been able to make a decision. It all has to do with my workload and whether or not I can do what I must do and still have time for the things I want to do. I will have been more able to make a final decision by the time the next issue is published. In the interim, please continue to send articles to me at the address shown at the bottom of the page.

Submissions. I recently had a misunderstanding regarding an article I received that contained the text of a letter that the person who sent it to the publication from a third party. The third party resented the fact that it had been published without his permission. He approached the situation in a manner that I can only describe as being unfriendly.

Granted I was a bit upset with what transpired, but please don't think that I don't want to hear about things you find erroneous or otherwise not to your liking. If you don't tell me about things you find wrong with the newsletter, I am pretty certain I will do the same thing again. None of us are as good as all of us.

Rather than have to deal with another confrontation of the kind I that described, I request that any article you submit in the future is accompanied by a statement that says:

"The content of the article titled '<title>' is entirely my own. Any material that I have gathered from other published sources are indicated by a proper bibliographic reference. References to letter and conversations are approved by the sender and received and I have appended their written approval to my submission."

continued in next column

I know it sound like we have made submitting an article for publication sound like a lot more work. It might e, but it would certainly go a long way to avoid any complications that might ensue without the proper permissions to publish certain items.



**LOOKING
TO ADD
TO YOUR
PRECANCEL
COLLECTION?**

BNAPS members can find a wide range of items at reasonable prices in the BNAPS Exchange Circuit.

For more information, contact Andy Ellwood at:

andy_ellwood@rogers.com

STUDY GROUP CONTACTS

Chairman: Andy Ellwood andy_ellwood@rogers.com
Secretary: Gary Steele gwsteele57@gmail.com
Editor: Larry Goldberg lmg@lmgcomm.com
710 Alsace Circle
Buffalo Grove, IL 60089-7733

INTERESTING CONSTANT VARIETIES IN SOME FREDERICTON PRECANCELS

by Art Halpert

About two years ago, I acquired two different plate blocks of twenty of the Admiral 2-cent green, dry printing with Fredericton precancels. This acquisition afforded me the opportunity to review whether there were anomalies in the precancels and, if there were, whether they were constant.

PLATE BLOCKS #221 AND #222

Before dealing with the precancel overprints, let's look at the plates to which the precancel was affixed. According to George Marler, the plates were laid down using the Re-engraved Die. This die was used to lay down a number of plates, numbers 190 to 192, 195 to 229. The two plates under review are numbers plates 221 and 222. The plates were printed in sheets of 400 (20 by 20 subjects) and divided into four sheets of 100. Both these plates are from the upper right sheets.

The stamps of these plates are characterized by having a small dot near the left numeral box and the vertical line in the upper left spandrel is broken at the bottom. The plates were issued late in 1927 (plates approved September 12, 1927; earliest date appears to be October 1, 1927). There were no re-entries or retouches noted by Marler on these two plates.

THE FREDERICTON PRECANCELS

The precancel overprints consist of two thick horizontal bars, flanked by thin wavy lines bordering the outside of both bars. Above the top wavy line is "Fredericton", below the lower wavy line, "N.B.", in both upper and lower case serif letters. The periods in the "N.B." are small squares. This type of city precancel is identified as Style 5 in *The Unitrade Specialized Catalogue of Canadian Stamps*.

The following are the constant precancel varieties I have found on these plates. They occur on both plates and there appear to be no other significant varieties on the two strips examined. The designation of the positions, 1 to 10 represents the top row of the sheet from left to right ("1" being the upper left stamp). Positions 11 to 20 represent the same positions in the second row. None of these varieties are mentioned *The Standard Canada Precancel Catalogue, 7th Edition* or in *Canada Constant Precancel Varieties*.

POSITION 2 (FIGURES 1, 1A)

There is a break in the top solid bar and wavy line on the left side of position 2.

POSITION 6 (FIGURES 2, 2A)

The B in N.B. is deformed, as is the following period. The right side of the N is weak.

POSITION 8 (FIGURES 3, 3A)

The right foot of the "N" in N.B. is deformed.

POSITION 9 (FIGURES 4, 4A)

There are three distinguishing characteristics: 1. The F in Fredericton is missing most of the top horizontal line; 2. there is a break in the top bar under the "t" of Fredericton; 3. the top of the "n" in Fredericton is missing.



POSITION 10 (FIGURES 5, 5A)

There is a partial nail head following Fredericton.

POSITION 17 (FIGURES 6, 6A)

There is a complete or almost complete break in the bottom bar to the right of the “n” in Fredericton.

POSITION 19 (FIGURES 7, 7A)

The “ed” in Fredericton is deformed/broken.

There are other minor anomalies too small to mention. In addition, usage of the overprint may have resulted in additional breakages over time.

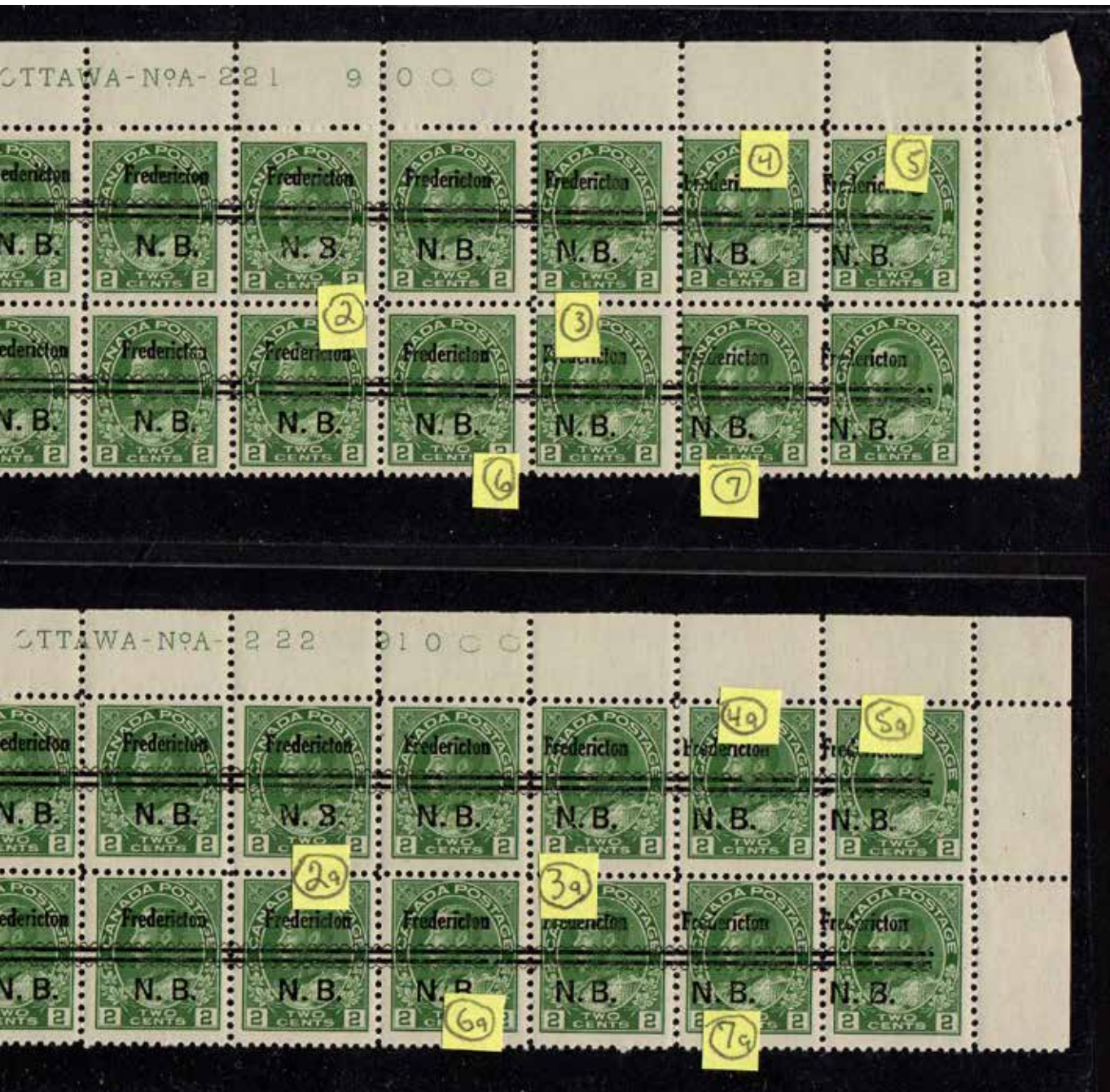
BIBLIOGRAPHY:

Marler, George C.. *The Admiral Issue of Canada*, American Philatelic Society, 1982.

J.E. Kraemer, D. Marasco and Field, B. *The Standard Canada Precancel Catalogue (7th Edition)*. The Unitrade Press, 2015.

Reiche, Hans. *Canada Constant Precancel Varieties*. The Unitrade Press, 1995.

D. Robin Harris, Editor. *The Unitrade Specialized Catalogue of Canadian Stamps*, 2016. The Unitrade Press, 2016.



PRECANCEL SHOW & TELL

**2¢ QV MAPLE LEAF PRECANCEL
WITH SCARCE VARIETY**

Here's a very interesting as well as lucky find by Garfield Portch forwarded to me by Andy Ellwood. Frankly, I'm jealous. It certainly adds credance to the fact that under every precancel is an interesting stamp. Ed.

“Hi, Andy,

“Although I am not particularly a collector of precancels, I enjoyed sitting in on your group meeting in Fredericton.

“Last week, I purchased a cover on ebay to include in my collection of Toronto postal markings. Upon receipt, I discovered not only is it a nice cover at a very reasonable price, but the stamp is a spectacular major rarity.

“I have attached images that you are welcome to use in the group newsletter or whatever other purose uyou need.

“Best wishes,

Garfield Portch FRPSC, BNAPS #3605”



Stamp on cover



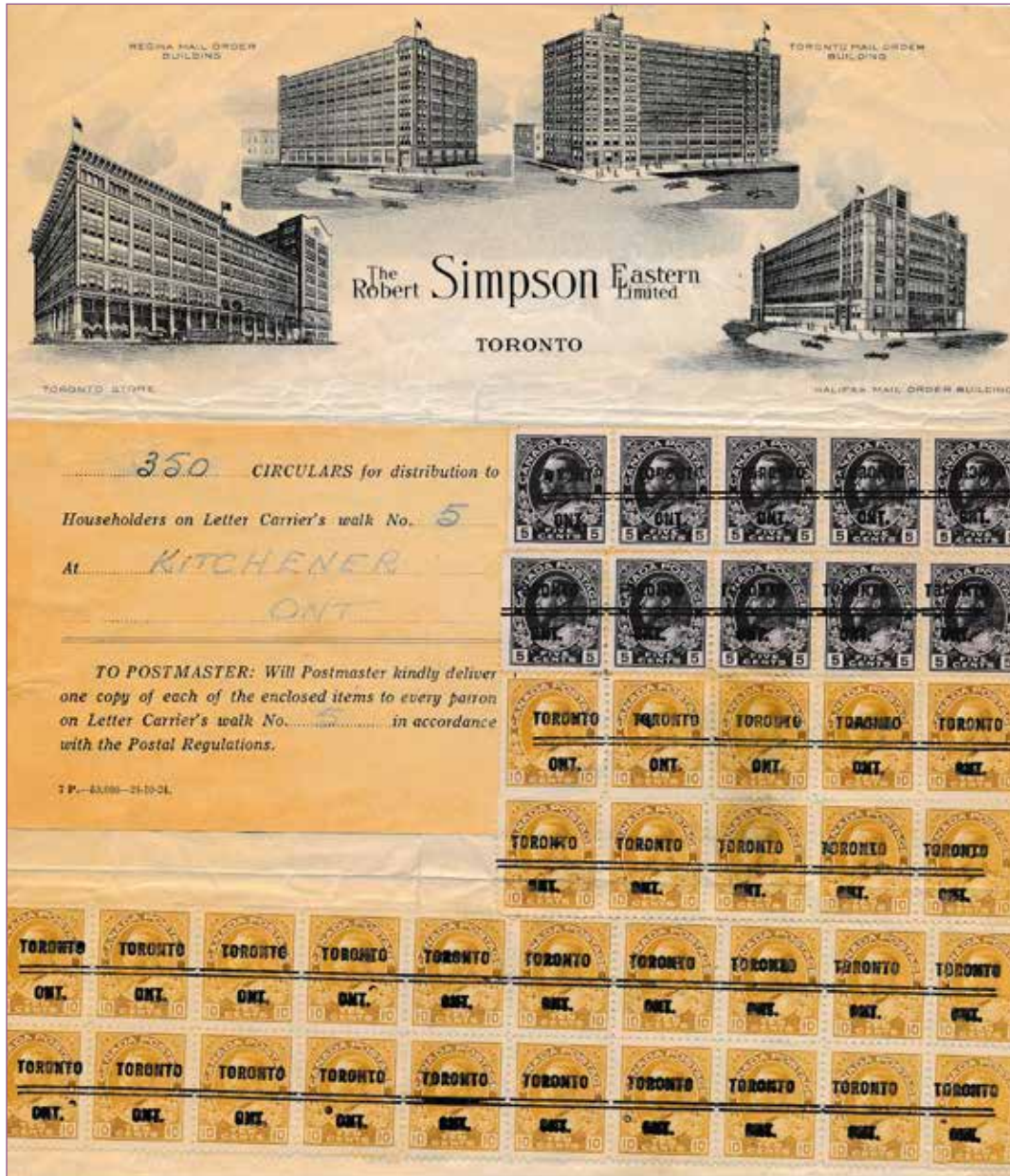
Enlarged view of variety

PRECANCEL SHOW & TELL (continued)

**LETTERHEAD ON EVERY HOUSEHOLD
DELIVERY CARD**

The letterhead shown below has an Every Household delivery card and ten 5-cent and thirty 20-cent type 10 Toronto precancels. This franking was to cover the delivery of 300 unaddressed circulars to Kitchener.

Bruce Field



PRECANCEL SHOW & TELL (continued)

**5¢ KING EDWARD VII “PORTCULLIS”
RE-ENTRY PRECANCEL**

The Unitrade Catalogue lists three major re-entries for the 5¢ blue King Edward VII. There are, of course, others but for whatever reason the catalogue editor decided to list three. The re-entry I particularly like is the “Portcullis” listed as 91v. This re-entry shown on the Trimble website, http://www.re-entries.com/edwardVII_fivecents.html is particularly strong.

Pictured nearby is an example of the “Portcullis” on a Montreal 2-91. As noted by Trimble, the “Portcullis” “gets its name from the heavy retouching of the lines between ‘A’ & ‘P’ which makes it resemble the heavy iron gates of medieval times. This happened twice on the 5c Edward, here in the upper portion of the oval band, and on the stamp below in the lower portion of the oval band. Both retouches are accompanied by strong re-entries.”

Perhaps someone has made a study of re-entries that occur on Canadian precancels. If so, I would appreciate a reference. In the meantime, I will continue to examine my King Edward VII precancels for additional re-entries.

George B. Dresser



DEVENEY STAMPS

SERVING CUSTOMERS & HELPING BUILD COLLECTIONS SINCE 1977

CANADIAN PRECANCEL SPECIALISTS



OUR ENTIRE INVENTORY IS AVAILABLE
FOR RISK FREE APPROVAL.

WWW.DEVENEYSTAMPS.COM

Toll Free: 1.888.232.0282

info@deveneystamps.com