

THE KLÜSSENDORFER

Newsletter of the BNAPS Canadian Klüssendorf Study Group

Issue Number 15

July 1991

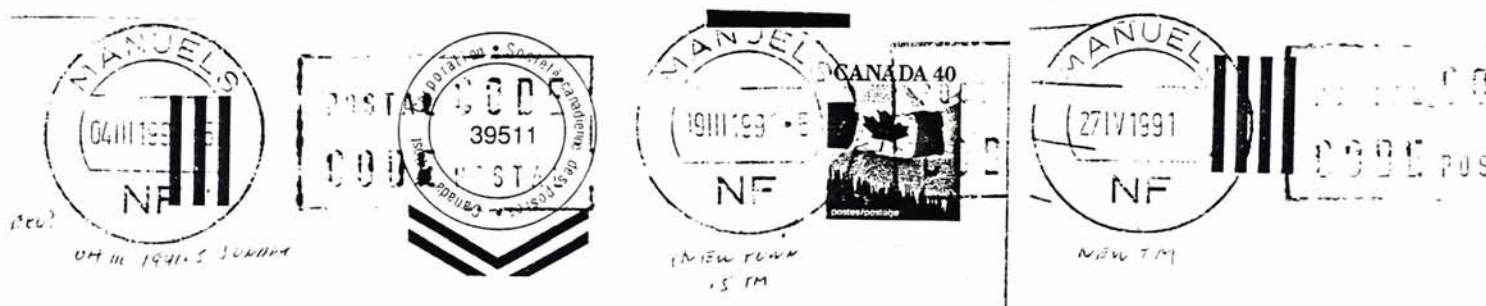
Coordinator: Allan L. Steinhart, 35 Church Street, Suite 305, Toronto, Ont. M4E 1T3. Phone: 416-362-8257.

Deputy Coordinator: Greig Hutton, 1227 Cambridge Cres., Sarnia, Ont. N7S 3W5.

Editor: Gray Scrimgeour, 227 Hanna Rd., Toronto, Ont. M4G 3P3.

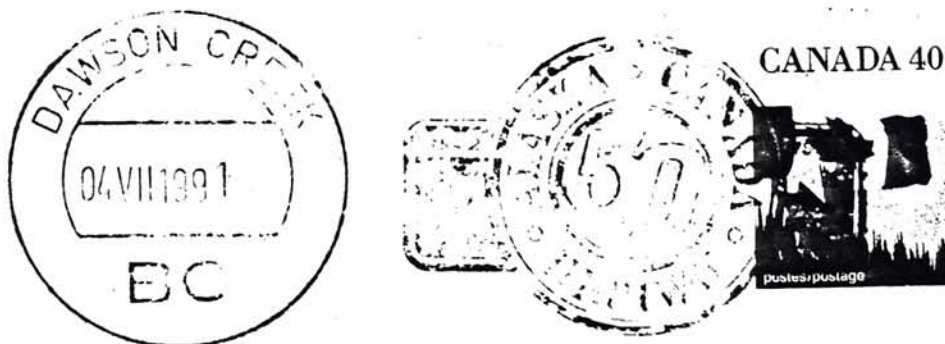
The date on the present masthead is July 1991, and this is being typed on July 12th. The date on the previous issue was January 1991, and my computer tells me I finished typing it on March 14th. I'm leaving for holidays in 6 days, ending up at BNAPEX '91 in Vancouver at the end of August. Work has been extra hectic since March, with much overtime. I've worked the past 8 weekends, including a long weekend in Chapel Hill, NC for work on a textbook. Allan has moved, as you'll note from the new address and phone number above. He's been busy packing and then unpacking boxes of books, personal effects, etc. Ks have therefore been in second position for both of us lately. But we'll make up for that this weekend, with a full issue - even if a lot of it will be illustrations that Allan prepared this week. SO, here's the latest news for Klüssendorfers.....

NEW TOWN. MANUELS, NF is our newest Klüssendorf town cancel. The EKU at present is 04 III 1991, with the unusual TM .5 being used. A timemark change occurred with 05 IV 1991 as the LKU of .5 and 27 IV 1991 BL found. It is possible that this is the machine that was at Mount Pearl; it was discontinued about September 9, 1989 - a Saturday. Three strikes are shown below: the EKU (a Sunday), 19 III 1991 .5, and 27 IV 1991 BL.



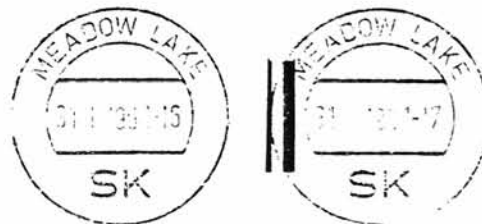
SLOGANS. We have heard that the CRESTON, BC Blossom Festival slogan is back in use again for 1991. Dave Hanes has reported a new slogan at PERTH, ON. I misplaced the date and wording, but we'll have full details for the next issue. (See also p. 278.)

Alaska Highway slogans! A number of POs in the northwest part of Canada have been using handstamps that commemorate the 50th anniversary of the completion of the Alaska Highway. Now we have reports of two K machines that have similar commemorative material, as slogan slugs. Bill Robinson has sent a copy of FORT NELSON, BC dated 11 V 1991-0, with a partially readable slogan. Just today, Allan got a clear strike of this slug - or I should say, a similar slug - in use at DAWSON CREEK, BC, sent to him by Keith Spencer. An enlargement of the slogan is shown below. The date is 04 VII 1991 BL. The numeral 50 is in the centre of a double circle. Around the circle, it reads ALASKA-CANADA/HIGHWAY. An American 3-star and 5-bar emblem and the year 1942 are at the left, and a Canadian maple leaf and the year 1992 are at the right. I hope you can get an idea of the slogan's format from the photocopy. Are strikes all relatively poor? Or is the design just a bit too complicated for the dark stamps that are in use at present?



MEADOW LAKE, SK. The timemarks used at MEADOW LAKE are a bit of a mystery. The normal TM is -16. Occasionally, we find that TM -17 is used. On eleven occasions, we have reports of both TM -16 and TM -17 on the same day. The dates are as follows:

25 V 1987	30 VI 1989
21 X 1988	13 X 1989
30 X 1988	12 I 1990
23 XI 1988	16 X 1990
5 XII 1988	31 I 1991 (right)
22 III 1989	



There seems to be no pattern. Does the postmaster change the TM this frequently when processing mail?

Status of Some K Towns at Present

ACTON, ON - No reports after 25 IX 1990. It appears to be discontinued or in very restricted use.

ALDERGROVE, BC - One report in 1990 on 4 XII 1990. Very restricted local use.

AMHERST, NS - Much less frequent use in late 1990 and in 1991.

ANTIGONISH, NS - Much less frequent use in late 1990 and in 1991.

AYLMER, PQ - LKU is 24 VII 1990

J0X--K0A (bar), PQ - The EKU is 26 VII 1990

AYLMER WEST, ON - The LKU is 29 XI 1990. No other use has been seen after 20 IX 1990. The normal LKU is 20 IX 1990

BEAMSVILLE, ON - Local use only - one report in 1990, 30 XI 1990

BOLTON, ON - No reports after 20 IX 1990. Local use or discontinued.

BOWMANVILLE, ON - Discontinued on 29 XII 1989

BRACEBRIDGE, ON - Less frequent use in 1991. Part of the mail goes to a sorting plant.

BRIDGEWATER, NS - LKU of 6 X 1990. Either local use or discontinued.

CHELMSFORD, ON - Less frequent use in 1991. Part of mail to sorting plant.

COBOURG, ON - Local use, only. Two reports after 6 IX 1990: 24 IX and 30 XI 1990. None in 1991.

COLLINGWOOD, ON - Less frequent use late in 1990 and in 1991. Mail partially to a sorting plant.

DAUPHIN, MB - Less frequent use after September 1990. Sorting plant.

DELHI, ON - Discontinued. The LKU is 07 IX 1990

DORION-VAUDREUIL, PQ - Appears to be discontinued. LKU is 14 IX 1990 -22

DUNNVILLE, ON - In local use only. Some coming through, though, to Toronto.

ELMIRA, ON - Discontinued on 20 IX 1990-18. Two late reports: 03 X 1990-18 and 14 XI 1990-18. Favour strike.

FERGUS, ON - Discontinued. The LKU is 20 IX 1990-18

GANANOQUE, ON - Local use only. Latest report is 29 I 1991-18

GATINEAU, PQ - Discontinued. LKU 23 VII 1990 BL

J0X K0A (no bar), PQ - EKU 24 VII 1990 BL

- GRAVENHURST, ON - Late 1990-1991, less frequent strikes. Part of bagged mail goes to a sorting plant.
- GRIMSBY, ON - Local use only. One strike reported in 1990: 12 III 1990.
- HUNTSVILLE, ON - After September 10, 1990. much less frequent use. Mostly bagged mail.
- INGERSOLL, ON - After 21 IX 1990, local use only. Two strikes reported after; 23 XI and 31 XII. No 1991 strikes seen.
- KENTVILLE, NS - Appears to be less frequent use in 1991.
- LACHUTE, PQ - Less frequent use after September 1990 - partly bagged mail.
- LISTOWEL, ON - Discontinued. The LKU is 2 X 1990-18
- LIVERPOOL, NS - Possibly discontinued or local use. No reports after 21 XI 1990=
- LOUISEVILLE, PQ - Possibly discontinued or for local use. There have been no reports after 13 XI 1990-17
- MAGOG, PQ - Less frequent use after September 1990. Part of mail bagged.
- MANIWAKI, PQ - Strikes less frequent in late 1990 and in 1991.
- MASCOUCHE, PQ - Discontinued or in local use only. LKU at present is 08 IX 1990-17
- MATANE, PQ - Less frequent use in 1991.
- MIDDLETON, NS - September 1990 to date: less frequent strikes. Most of mail to sorting plant.
- MIDLAND, ON - October 1990 to date: strikes less frequent. Most to sorting plant.
- MONT LAURIER, PQ - After October 1990, strikes are less frequent. Most to sorting plant. Only one strike reported in 1991.
- NAPANEE, ON - October 1990 to date - less frequent strikes. Most of mail to sorting plant.
- NEWCASTLE, NB - Strikes less frequent in 1991.
- NIAGARA-ON-THE-LAKE, ON - Local use only. One 1991 strike reported, 3 XI 1990-17
- PARIS, ON - Discontinued, LKU is 07 IX 1990-18
- PARRY SOUND, ON - After October 1990, strikes are less frequent. Most to sorting plant.
- PICTON, ON - TM 11 is still in use on 16 II 1991
- PORTAGE LA PRAIRIE, MB - Local use from September 1990 - some coming through. Eight 1991 strikes reported.
- PORT ALBERNI, BC - Discontinued, with an LKU of 08 IX 1990-09
- PORT COLBORNE, ON - Local use only. One 1991 report, 29 XI 1991-07
- PORT HOPE, ON - Local use only. Only one report, 29 XI 1990-18, after 18 IX 1990
- STE. AGATHE DES MONTS, PQ - Decrease in use from September 1990.
- ST. ANDREWS, NB - Still in use; 7 reports in 1990. None in 1991.
- ST. ZOTIQUE, PQ - Infrequent use from November 1990 to date. Only 4 reports from November.
- SELKIRK, MB - Local use only from September 1990. Only one 1990 report: 03 XII 1990-19
- SHERBROOKE, PQ - No 1990 or 1991 reports.
- SIDNEY, BC - Appears discontinued. No 1990 or 1991 reports. LKU = 24 V III 1989.

SIMCOE, ON - Discontinued, with an LKU of 07 IX 1990-18

STRATHROY, ON - Discontinued, with an LKU of 20 IX 1990-19

TERREBONNE, PQ - Discontinued or local use. No reports after 07 IX 1990-20

TILLSONBURG, ON - Local use. Two 1990 reports, 16 II and 30 XI 1990-18

TISDALE, SK - Local use or discontinued. No reports after 02 X 1990 =1

TRENTON, ON - A decrease in use in 1991. Much mail to sorting plant.

VILLE ST. GEORGES, PQ - Decrease in use from October 1990. Only 3 strikes reported to April 1991.

VIRDEN, MB - Local use only after mid-September 1990. Two strikes reported after - 03 XII 1990-17 and 06 II 1991-18

WAWA, ON - Infrequent use in 1991. Two strikes reported for January 1991 and nothing later.

YARMOUTH, NS - After October 1990, it appears to be local use only. One report for Nov.-Dec. 1990 and 1991 (16 III 1991-07).

Naturally, we'd like to have any information at all about these postoffices and their K machines.

Regarding the changes in mail routing and servicing, here's an announcement from the Globe and Mail reporting a Canada Post press release on this subject. Looks like there'll be another batch of changes this September, and in 1992.

The Globe and Mail, Wednesday, May 8, 1991 B3

Canada Post moving to more centralization

Manual mail sorting on the way out

BY DREW FAGAN
Parliamentary Bureau

OTTAWA — Canada Post Corp. is expanding steps to reduce or eliminate manual mail sorting in smaller communities to improve efficiency and slash costs.

The Crown corporation announced yesterday that mail processing will be streamlined in 54 cities and towns in Atlantic Canada, Quebec and Ontario beginning in September. The move will come one year after Canada Post took similar steps in about 100 communities nationwide.

Manual mail processing operations in communities such as Glace Bay, N.S., Roberval, Que., and North Bay, Ont., will be eliminated. Instead, mail from those cities and

others will be shipped to mechanized sorting operations in major centres such as Halifax, Ottawa, Sudbury and Montreal. Other communities will retain sorting operations for local mail but lose any processing of mail destined for outside their area.

Canada Post says its annual savings from the centralization process implemented last year is \$15-million and that the savings from this second phase of the process will be another \$3-million annually.

Canada Post officials said the changes are here to stay and that fur-

ther expansion of the centralization process can be expected next year.

But officials at the Canadian Union of Postal Workers, which represents about 75 per cent of Canada Post's 58,000 employees, plan to continue a fight against the moves in contract negotiations with the Crown corporation.

"This has a big impact on the smaller communities," said Gordon Ash, a CUPW vice-president. "Canada Post should be ensuring that jobs stay in those towns."

Canada Post said about 500 jobs disappeared through the first phase of the centralization process, with most affected workers choosing to take early retirement packages or move to new positions at the mechanized operations.

The Crown corporation said the new centralization will also be completed without layoffs, although some employees will have to move to keep a job with Canada Post.

The CUPW argues that Canada Post's profitability means it is responsible for finding jobs for the affected workers in their home communities.

Canada Post had profit of \$149-million in the 1989-90 fiscal year and \$96-million in 1988-89. It had been in the red for the previous three decades.

PORT ALBERNI, BC - by Allan Steinhart

This most interesting Klüssendorfer town has discontinued use of its K machine. A breakdown of the timemarks, slogans, and errors known at present follows. The EKU reported is 16 III 1984, reported in the February 1, 1987 Line Cancellor #16. I also have this date. Reports for March and April 1984 show the day space blank and the day in the time slot. Reports to date for this format are:

BL III 1984-16	BL IV 1984-13
BL IV 1984-07	BL IV 1984-16
BL IV 1984-10	BL IV 1984-19

The EKU of the normal format is 05 V 1984 BL. From this date on, the chronology is:

05 V 1984 BL to 05 X 1984 BL	POSTAL CODE
31 V 2013-0 Error for 31 IV or V 1984-0	
09 X 1984 7 to 25 XI 1984 7	POSTAL CODE
1 XII 1984 7 to 22 XII 1984 7	Slogan, Christmas Seals
28 XII 1984 7 to 31 XII 1984 7	POSTAL CODE
2 I 1985.8 to 09 VIII 1985.8	POSTAL CODE
13 VIII 1985.8 to 28 IX 1985.8	Salmon Slogan
23 X 1985.8 to 12 XI 1985.8	POSTAL CODE
15 XI 1985.8 to 13 XII 1985.8	Christmas Slogan
27 XII 1985.8 to 30 XII 1985.8	POSTAL CODE
04 I 1986.9 to 29 I 1986.9	POSTAL CODE
02 II 1986.9 to 30 VII 1986.9	Forestry Slogan
05 VIII 1986.9 to 30 VIII 1986.9	Salmon Slogan
2 IX 1986.8 to 13 XI 1986.8	Forestry Slogan
A report of 07 XI 1986.8	POSTAL CODE - possible report error.
20 XI 1986.8 to 16 XII 1986.8	Christmas Slogan
20 XII 1986.8 to 31 XII 1986.8	Forestry Slogan
2 I 1987 =9 to 29 XII 1987 =9	POSTAL CODE
05 I 1988 =0 to 2 VIII 1988 =0	POSTAL CODE
5 VIII 1988 =0 to 20 IX 1988 =0	Salmon Slogan
20 IX 1988 =0 to 31 I 1989 =0	POSTAL CODE
01 I 1989 =0 Error for 10 I 1989 =0	POSTAL CODE
1 II 1987.8 Error for 1 II 1989.8	POSTAL CODE
2 II 1989.8 to 17 VI 1989.8	POSTAL CODE
30-31 IV 1989.8 Error for 30-31 III 1989.8	POSTAL CODE
20 V 1988.7 Error for 20 VI 1989.7	POSTAL CODE
22 V 1988.6 to 30 V 1988.6 Error for VI 1989.6	POSTAL CODE
04 IV 1989.7 to 05 IV 1989.7 Error for VII 1989.7	POSTAL CODE
11 VII 1989.7 to 25 VII 1989.7	POSTAL CODE
26 IV 2016 4 to 27 IV 2016 \$ Error for VII 1989	POSTAL CODE
28 IV 2016 7 to 31 IV 2016 7 Error for VII 1989	POSTAL CODE
1 VII 2016 7 Error for VIII 1989 7	POSTAL CODE Corrected same day
01 VIII 1989.8 to 31 VIII 1989.8	POSTAL CODE
1 VIII 1989.9 to 7 VIII 1989.9 Error for IX 1989.9	POSTAL CODE
8 IX 1989.9 to 30 IX 1989.9	POSTAL CODE
02 X 1989-10 to 30 X 1989-10	POSTAL CODE
2 XI 1989-11 to 30 XI 1989-11	Fight Lung Disease Slogan; postmaster reports EKU 1 XI
04 XII 1989-12 to 09 XII 1989-12	Fight Ling Disease Slogan
11 XII 1989-12 to 29 XII 1989-12	POSTAL CODE
02 I 1990-01 to 31 I 1990-01	POSTAL CODE
01 II 1990-02 to 28 II 1990-02	POSTAL CODE
1 III 1990-03 to 02 III 1990-03	POSTAL CODE
04 IV 1990-04 to 04 V 1990-04	POSTAL CODE
7 V 1990-05 to 04 VI 1990-05	POSTAL CODE

(continued)

Some photocopies of the period of 1984 to 1987 are on the next page.

PORT ALBERNI (continued)

06 VI 1990-06 to 10 VII 1990-06	POSTAL CODE
3 VIII 1990-06 Error for 3 VII 1990-06 (as VIII was -08)	
16 VII 1990-07 to 30 VII 1990-07	POSTAL CODE
01 VIII 1990-08 to 30 VIII 1990-08	POSTAL CODE
01 IX 1990-09 to 08 IX 1990-09	POSTAL CODE
08 IX 1990-09	LKU

Another error BL IV 1989-07 has been reported for 07 IV 1989.8 with the TM left off and the day in the TM slot.

Material from PORT ALBERNI now goes to sorting plant V8Z 4B0.

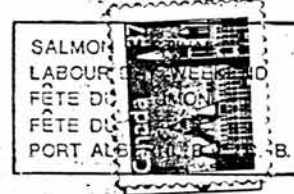
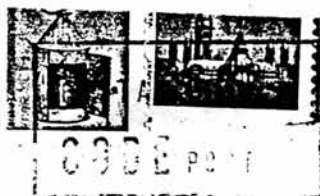
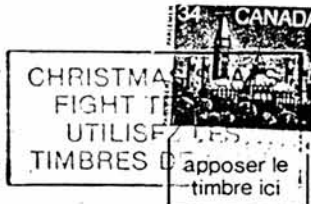
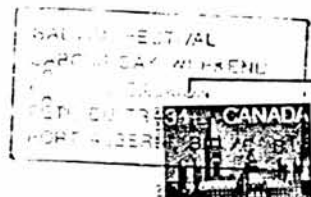
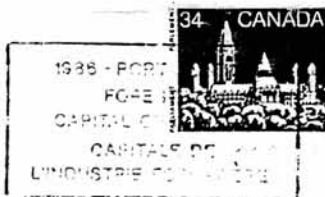
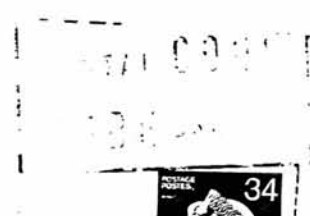
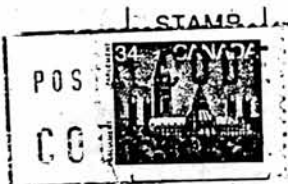
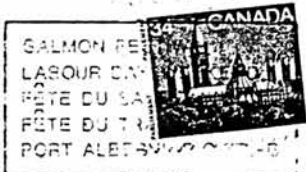
The timemarks reported used at PORT ALBERNI are: BL, ., -0, -01, -02, -03, -04, -05, -06, -07, -08 -09, 4, .6, 7, . 7, .8, .9, =9, -10, -11, and -12. The following have been used as days in the TM slot: -07, -10, -13, -14, -16, -19 as days. In addition, the following are unconfirmed TMs: -7, 8, -8.

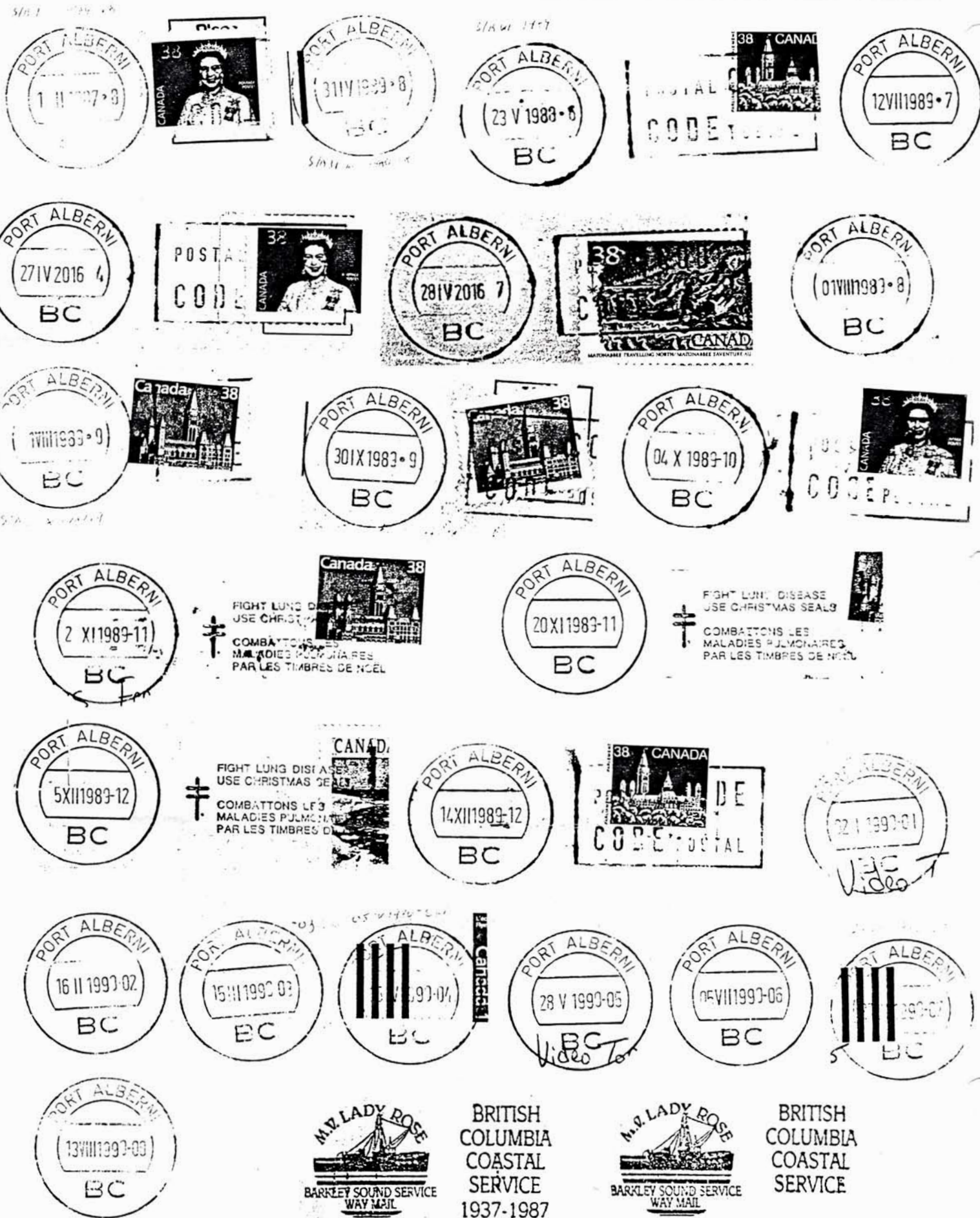
One significant point is that PORT ALBERNI is the only Klüssendorf town that attempted in the last year or so to match the timemark to the month (e.g., .7 and -07 in July 1989 and 1990, respectively).

PORT ALBERNI has four slogans - more than any other town. In addition, PORT ALBERNI was the only town where the K machine cancel was used as a way mail marking. The M.V. "Lady Rose," a freighter operated by the Alberni Transportation Inc., carried mail, cargo, and passengers between Port Alberni, Bamfield, and Ucluelet, and used a handstamp sometimes as a purser marking on way matter posted on the ship. This mail received a PORT ALBERNI K cancel on being placed in the post office there.

We will miss PORT ALBERNI.

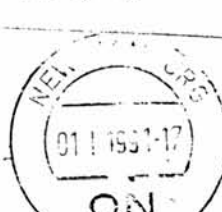
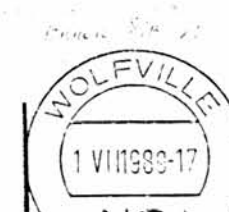
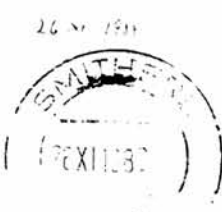
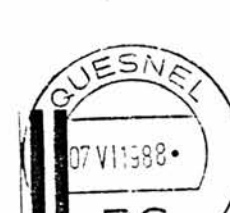
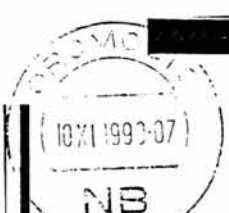
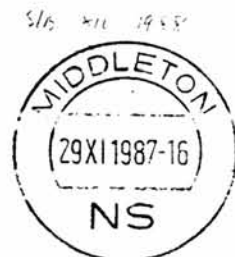
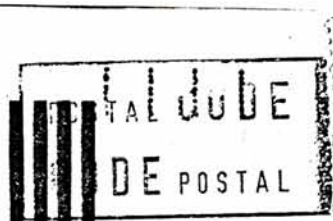






RECENT REPORTS

ABBOTSFORD, BC	18 IV 1984 BL	A report (nice way to start a list!)
ACTON, ON	25 II to 3 III 1989-21	Error for 1988 - extend period.
ACTON, ON	12-23 III 1989-21	Error for 11 1988 - extend period.
ALEXANDRIA, ON	10 I 1991-08	TM changed from -18
ALEXANDRIA, ON	02-07 I 1987-18 SL	Error for 1988 - extend period.
AMHERST, NS	12-13 I 1989-19	Error for 1987 - extend period.
AMHERST, NS	27-30 V 1987-18	Error for VI 1988 - extend period.
AMOS, PQ	07-27 VIII 1990 BL	Error for VII - extend period.
AMOS, PQ	2 I 1991.	TM change from BL
AMQUI, PQ	30 I 1991 BL	TM change from =
ARNPRIOR, ON	21 II 1991-18	Error for I (Rec'd Feb. 12th)
ASBESTOS, PQ	28 I 1991-24	New TM
AYLMER WEST, ON	13 VII 199 -09	Error - should be 1990
BANCROFT, ON	28-29 IV 1988-24	Error for 1990-24. New TM, too.
BOLTON, ON	18 XII 1980-18	Error for 1990 - and move TM to confirmed.
BORDEN, ON	23-25 III 199 -16	Error for 1991. Dave Hanes says this PO <i>will</i> close soon (later than I listed last issue, though).
BOTWOOD, NF	23 II 200 -09	Error for 23 I 1991-09. New TM.
BOTWOOD, NF	12 VIII 200 9	Error for VII 1990 9. New TM
BOTWOOD, NF	31 VIII 1989-14, 8; 28 IX 1989 8, -14	Matched pairs
BRIDGEWATER, NS	06 X 1990=	LKU? No later report yet.
BRIGHTON, ON	04 VI - 19 X 199 0	Error for 1990 - extend period.
BROOKS, AB	22 III - 02 IV	1991.1 Top of name BROOKS missing
BUCKINGHAM, PQ	29 II 1991 BL	Impossible date, error.
CAMPBELL RIVER, BC	11-13 II 199 -0	Error for III 1991-0 - extend period. New TM, too.
CAMPBELLVILLE (GEORGETOWN), ON	24 I 1991-04	New TM
CAMPBELLVILLE (GEORGETOWN), ON	09-10 VI 1991-04	Error - should be IV
CAMROSE, AB	20 XII 1985 =6	A report
CARAQUET, NB	25 III 1991.	TM change from .2
CARLETON PLACE, ON	38 IV 1988-18	Error for 28 - impossible date.
CASTLEGAR, BC	09 XII 1983.0	New EKV
CASTLEGAR, BC	08 II 199 =	Error for 1991; corrected same day.
CHELMSFORD, ON	26 II - 29 IV 199 .0	Error for 1991 .0 - corrected 01 V
CHIBOUGAMAU, PQ	18 I 1991 .	TM change from BL
CHICOUTIMI, PQ	06-08 III 1991 BL	Blank town - 3 dates reported.
CLARENVILLE, NF	22 I 1991-19	New TM, -19.
COBOURG, ON	31 VI 1988-18	Impossible date error - should be 31 V or 30 VI or 1 VIII
COCHRANE, ON	30 VI - 23 VII 1990-16	Invert - extend period.
COLLINGWOOD, ON	22 XI 1990-17	New timemark, TM -16
COLLINGWOOD, ON	16 VII 1989-18	Sunday - no Sunday uses. Should be 17 VII.
CRANBROOK, BC	04-08 VI 1991 =	Error for V
CRESTON, BC	25 IV TO 02 V 1991 1 (no dash)	Invert.
CRESTON, BC	04 VI - 29 VI 1990 -1 (dash)	Invert - extend period
DAWSON CREEK, BC	11 IV 199 BL	Error for 1991
DEEP RIVER, ON	25-26 III 1991-19	New TM, -19
DEEP RIVER, ON	30 VI 1990-11	Only report of TM -11 in 1990
DELHI, ON	14-21 III 1988-18	Invert - extend period.
DIGBY, NS	03-19 V 1987-18	Error for 1988 - extend period.
DOLBEAU, PQ	25 XII 1989 =	Error for 1 1990
DRAYTON VALLEY, AB	27 I 1991 BL	Sunday - no Sunday use - possible error for 28 I
DRYDEN, ON	04-05 VIII 1990.8	Error for VII - extend period.
DRYDEN, ON	05 IV 1991-04	New TM, -04
EAST ANGUS, PQ	21 I 1991 BL	TM change from .
EDSON, AB	22 V 1988.	Error for IV



ELMIRA, ON	31 XI 1987-12	Error for XII
ESPANOLA, ON	05-26 VI 1991-18	Error for IV
ESPANOLA, ON	15 VI - 17 VII 1990-18	Invert - extend period.
ESPANOLA, ON	04 XII 1991-18	Error for 04 I or II 1991-18 (rec'd on Feb. 12)
FLIN FLON, MB	09 II 1992-07	Error for 1991-07. New TM, too.
FORT FRANCES, ON	17 II 1991 BL	Sunday - not in Sunday use - possible day error.
GANDER, NF	15 VIII 1988 -13, -15, -17, -21	Quadruple timemark set!
GATINEAU, PQ	05-10 VI 19990	Error for VII 1990 Invert. Extend period
GODERICH, ON	15 II 1988 -07, -17	Matched pair
GRAND FALLS, NF	12 II 1988 -08, -17	Matched pair
GRAND FALLS, NF	10 III 1988 -16	Error for 1989
GRAND FALLS-GRAND SAULT, NB	08 IX 1988-17	Error for XI
GRAND FORKS, BC	30 XI 1987.	Error for XII
HANOVER, ON	09 IV 1991-18	TM change from -19
HAPPY VALLEY, NF	26 I 1988 9, -15	Matched pair
HIGH RIVER, AB	08 IV 1991 =2	New TM
HUMBOLDT, SK	25 II 1992-08	Error for I 1991. New Tm, also.
HUMBOLDT, SK	7 I 1988-17	Slogan LKU?
HUNTINGDON, PQ	20-26 VII 1990-18	Error for VI
HUNTSVILLE, ON	5 III 199 BL	Error for 1991
HUNTSVILLE, ON	18 III 1991 0	TM change from BL
INGONISH, NS	03-12 VI 1990-19	Error - should be VII
INGERSOLL, ON	31 XII 1990-19	A late report.
KAPUSKASING, ON	06-29 VI 1989-15	Error for 1990 - extend period.
KAPUSKASING, ON	04-10 VII 1989-15	Error for 1990 - extend period
KINCARDINE, ON	06 III 1991-17	TM change from -18
KIRKLAND LAKE, ON	37 VI 1989.	Impossible date; should be 27
LA BAIE, PQ	08 III 1991 BL	Blank, in use again
LACHUTE, PQ	03 XII 1990-19	Late report - most mail bagged to L8E 2R0 sorting centre
LAKEFIELD, ON	03-31 VI 1990-17	Error for VII - extend period
LA MALBAIE, PQ	08 IB 199 .1	Error for 1991
L'ASSOMPTION, PQ	28 I - 18 II 2002 BL	Error for 1991 - extend period.
L'ASSOMPTION, PQ	25 II 2002 BL	Error - should be I 1991.
LISTOWEL, ON	06-10 VIII 1990-18	Error for VIII (hm, this looks like an error - an error error).
LUNENBURG, NS	05 V 1991 =	Error for IV
LUNENBURG, NS	18 III 199 .	Error for IV 1991
LUNENBURG, NS	02 V 1991 .	TM change from =
MACKENZIE, BC	08 I 1991 .	New TM
MANUELS, NF	04 III 1991 .5	New town, new timemark - Sunday
MANUELS, NF	27 IV 1991 BL.	New TM, BL
MEADOW LAKE, SK	31 I 1991 -16. 1-7	Matched pair
MEADOW LAKE, SK	05-17 VI 1989 -16	Error for VII
MEAFORD, ON	18 XII 199 -16	Error for I 1991-16
MEAFORD, ON	3 III 1991-17	Sunday, but no Sunday use. Error for 04?
MILTON, ON	19 III 1991-18	TM change from -09
MISSION, BC	08 III 1991.1	TM change from .
MONTMAGNY, PQ	08 I 1991 BL	TM change from .
MUSEE-POSTAL-MUSEUM	3 XII 1987.4	New timemark
NAPANEE, ON	06-07 X 1988 -06, -07	Matched pairs - unusual
NAPANEE, ON	06-07 X 1988-06	TM error for TM -16
NAPANEE, ON	08 VII 1990-07	Sunday; probably error for 09
NAPANEE, ON	05 VIII 1988-16	Error for VII
NEEPAWA, MB	31 II 1992 =	Error for 1 1991
NEEPAWA, MB	14 I 199 =0	Error; should be 1991. New TM
NELSON, BC	37 III 1991 BL	Error - impossible date.

Errors.

22-11-1984 10
S/B 1991



04-11-1984 -00
S/B 1991 01-05



11-11-1984 -00
S/B 1991 01-12



06-IV-1992 2-
S/B 1991



16XII-1984-1 NEW TM



RICHMOND BC
28-1-1984 0



S/B 28 XII 1990 0



15-IV-1991 NEW TM



CAMBER RIVER
13-11-1991 0



KEENAN
14-1-1991 30



S/B 1991

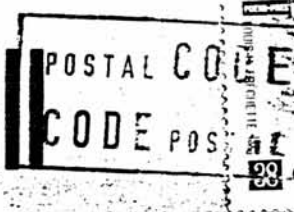
CAMBER RIVER BC
11-11-1991 0



S/B 11-11-1991 0



NEW TM
25-11-1992-05
S/B 25-11-1991-05



S/B 21-11-1992



19-11-1991-15
S/B 19-11-1991-15
NEW TM



S/B 30-VI-1990-2



S/B 1991



S/B 30-1-1993-06 NEW TM

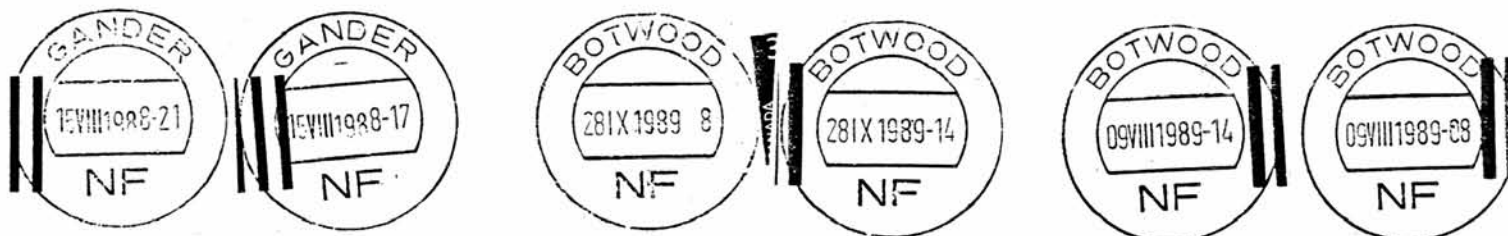


NEWCASTLE, NB	18 II 1988-18	Error for III
NEWCASTLE, NB	05-12 VI 1988-18	Error for IV; corrected 12 IV
NEWCASTLE, NB	18 V 1987-17	Error for 1988
NEWCASTLE, NB	19 VIII 1988-19	TM -19 confirmed
NEW HAMBURG, ON	01 I 1991-17	Error for 01 II
NICOLET, PQ	30 I 1991-16	New TM for regular use; formerly as error
NICOLET, PQ	8-30 IX 1987-17	Error for 1988 - extend period.
NICOLET, PQ	13 VI 1988-17	Error for VII
NICOLET, PQ	08 IV 1991-17	TM changed from -16
NICOLET, PQ	30 XI 1990-17 and VARENNES 28 XI 1990-18 on same cover.	TM change from -08
OROMOCTO, NB	30 III 1991-18	Error for X 1989 - extend period. Correct 11 X 1989-16.
OROMOCTO, NB	10-11 XI 1990-07	Error - impossible date.
OSOYOOS, BC	31 VI 1990.1	Error for VII - extend period
OSOYOOS, BC	06-31 VIII 1990.1	Error for 1991 - extend period.
PEACE RIVER, AB	04-08 IV 1992 1	A report
PENTICTON, BC	04 XII 1985 BL Slogan	Error for IV or V 1988
PORTAGE LA PRAIRIE, MB	5 IV 1987 =	Error for I 1991 (rec'd Feb. 12th)
PORT HAWKESBURY, NS	25 II 1991 BL	New TM, -00
PORT HAWKESBURY, NS	18 II 1991-00	Slogan LKU
PRINCE RUPERT, BC	29 XII 1989.	Invert - same day as slogan
PRINCE RUPERT, BC	29 XII 1989 .	TM change from -01
PRINCETON, BC	1 II 1991 BL	Strong strike - should be 2 or 4 (rec'd Feb. 12/91)
REPENTIGNY, PQ	II 1991-19 (no day)	New TM
REVELSTOKE, BC	13 III 1991 0 (no dash)	TM change from 0
REVELSTOKE, BC	28 III 1991 BL	Error for XII 1990 (new TM: no dash)
RICHMOND, ON	2? I 1989 0	TM change from =0
RICHMOND, ON	07 III 1991 =	Error for 1991
RIDGETOWN, ON	15-25 IV 199 -26	Error for IV 1991.
RIDGETOWN, ON	04-09 III 199 -26	New TM
RIVIERE DU LOUP, PQ	25 II 1991 =1	TM change from .1
ROBERVAL, PQ	30 I 1991 BL	Error for 1988 - extend period.
ROSETOWN, SK	13-22 X 1999-18	Error for X 1989 - extend period
ROUYN-NORANDA, PQ	26-30 IX 1988=	Error for XII 1990 - extend period
ROUYN-NORANDA, PQ	21-24 II 1991 7	Odd timemark
STE. ADELE, PQ	05 XI 1990-16	Another odd timemark
STE. ADELE, PQ	25 II 1991-05	TM change
STE. ADELE, PQ	28 III 1991-18	Error for 30 III
STE. ANNE DES MONTS, PQ	3 III 1988 BL	Error for 1990, and a new timemark, too.
ST. FELICIEN, PQ	28 XI 1999.0	Error for IV 1991 BL
ST. FELICIEN, PQ	03 IV or V 198 BL	TM change from -18
ST. JOVITE, PQ	08 IV 1991-17	TM change from -17
ST. JOVITE, PQ	12 IV 1991-18	New TM
ST. JOVITE, PQ	18 I 1991-19	TM change from -19
ST. JOVITE, PQ	18 II 1991-18	LKU of the slogan
ST. MARYS, ON	29 VI 1990-17	EKU for POSTAL CODE. June 30th was a Saturday, and
ST. MARYS, ON	03 VII 1990-17	then came the holiday weekend and the PO was closed 3 days until Tuesday July 3rd.
ST. PAUL, AB	24-25 V 1988 0	Error for 1989 - extend period.
ST. PAUL, AB	24 V 1988 1	Part turned. o also same day - error for 1989
ST. PAUL, AB	13 VII - 30 VII 1989 .	Error for 1990 - extend period
ST. ZOTIQUE, PQ	01 II 1991 =0	New timemark
SACKVILLE, NB	22 VI 1990-10	Sunday date, so probably an error for 23
SACKVILLE, NB	22 VI 1988 =8	Error for IV
SALMON ARM, BC	22-25 V 1989-0	Error for VI 1990, and a new TM
SALMON ARM, BC	8 IV 199 .	Error for 1991
SALMON ARM, BC	01 III 1991.	Error for II (rec'd Feb. 12th)

TIME MARKS



MATCHED TIME MARK PAIRS



SELKIRK, MB	13 I 1989-19	EKU of the POSTAL CODE after the slogan?
SHEDIAC, NB	22 III 198 .0	Error for 1991, and a new TM
SIDNEY, BC	13 XII 1985.1; 1 VIII 1985 BL; 17 VIII 1987.; and 19 VIII 1987.	4 reports - all local mail.
SMITHERS, BC	26 IV - 06 V 1991.	Blue
SMITHERS, BC	19-26 XI 1988 BL	Error for X 1987 - extend period
SMITHERS, BC	16 IV 1991.	Bright blue
SMITHS FALLS, ON	01-31 III 1991 =	For III - repeat of previous year
SPRINGHILL, NS	06 II - 17 IV 199 -0	Error for 1991
SPRUCE GROVE, AB	00 V 1988-20	Impossible date - error
STEINBACH, MB	3 V 1991.1	Move timemark from unconfirmed
STEPHENVILLE, NF	15 VII 1990-19	Error for VI 1989
STEPHENVILLE, NF	23 VII 1988-18	Error for VIII
STONY PLAIN, AB	12 II 1991 BL	Invert
STURGEON FALLS, ON	3 V 199 -17	Error for 1991, and a new TM
SUMMERLAND, BC	31 I 1991.	TM change
SWAN RIVER, MB	09-26 VI 1990.	Error - should be VII - extend period.
TERRACE, BC	24-29 XII 1999-1	Error for I 1991-1, and a new TM
TERRACE, BC	30-31 XII 1991.	Error for I 1991
TERRACE, BC	27 VII 199 .1	Error for VI 1990.1
TERRACE, BC	28 VIII 199 =2	Error for 1990, and a new timemark
TERRACE, BC	06-10 VIII 1990.	Error for VII
THREE HILLS, AB	25 I 1991.	TM change from BL
VAL D'OR, PQ	01-12 II 198 -00	Error for 1991 - extend period.
VAL D'OR, PQ	22-25 V 1992 BL	Error for IV 1991
VILLE MARIE, PQ	12 I 1991.	TM change from BL
VILLE ST. GEORGES, PQ	1 II 1991=	New timemark
VILLE ST. GEORGES, PQ	15 IV 1991.	TM change from =
VIRDEN, MB	6 II 1991-18	TM change from -20
WAINWRIGHT, AB	13-18 IX 1999-08	Error for VIII 1988 - extend period.
WESTBANK, BC	26-30 1990-2	Error for V 1989 - extend period.
WESTLOCK, AB	19 II 1991-0	New TM
WEYBURN, SK	07 II 1991 =2	New TM
WEYBURN, SK	05 IV 1987.	Error for 1988
WEYBURN, SK	30 I 1988 =1	Invert
WEYBURN, SK	14 I 1988 =1	Slogan LKU
WHITEHORSE, YT	11 IX 1999.0	Error for II ? 1990.0. A new timemark, anyway.
WILLIAMS LAKE, BC	02 II 1991 BL	TM change from =
WINDSOR, NS	21 IX 1988-17	Error for 21 ? 1989-17, possibly VIII
WOLFVILLE, NS	19 II 199 -15	Error for 1991, and a new timemark
WOLFVILLE, NS	1 VII 1989-17	Error for VI. A scarce TM in this period.
YARMOUTH, NS	16 III 1991-07	First report since October 1990.
YELLOWKNIFE, NT	12 V - 16 VI 1988.	Error for 1989 - extend period.

Bill Robinson has sent info on several BC TM changes.

HOPE, BC	29 IV 1991 =1	New TM early date.
VANDERHOOF, BC	18 IV 1991 =1	Another new TM, and early date for it.



Jim Karr's Alberta Report.

HIGH RIVER, AB

03 IV 1991 BL and 03 IV 1991 =2 Matched pair (same day) - changeover.
The =2 TM continued until 30 IV 1991.

HIGH RIVER, AB

1 V 1991 BL

TM change

LACOMBE, AB

15 II 1991 BL

18 I 199 -0

Month and year error for 18 II 1991

19 II 1991 BL

29 II 1991 BL

01 IV 1991 BL

16 V 1991 BL

Impossible date - error for 1 III 1991.

Error for 02 IV 1991 (Monday 1 IV was a holiday)

Month error for 16 IV 1991. This error continued through all of the month of April.

TABER, AB

31 XII 199 =0

31 XII 1990 =

Year error for 1990

Year error corrected same day

10 III 1991 =

Error for 01 III 1991 = (rec'd MR 7/91)

WESTLOCK, AB

19 II 1991 -0

TM change

And some British Columbia K information from Jim:

FERNIE, BC

22 II 1991 BL

TM change

OSOYOOS, BC

04 I 1991 .

Earlier date for TM

WHISTLER, BC

2 I 1991 BL

Earlier date for this timemark

WILLIAMS LAKE, BC

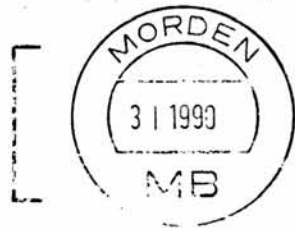
15 II 1991 BL

TM change - change was probably earlier.



Here are some nice illustrations sent in by Theo Gordon, with an EKU of 07 XII 1988 17 for ALTONA, MB, an early strike of a TM (BL) at MORDEN, a New Years Day VIRDEN, 1990, a VIRDEN error of 1999 (for 25 VII 1990), FORT FRANCIS strikes that should be 09 VIII 1990, and the SMITHS FALLS month IIII in 1987.

13



Error for 1990 (25 VII 1990)

Ritch Toop sent me a photocopy of a neat K item. I obviously tucked it away in a safe place, and will illustrate it next issue - after I find it. Sorry, Ritch.

09 VIII

13 VIII

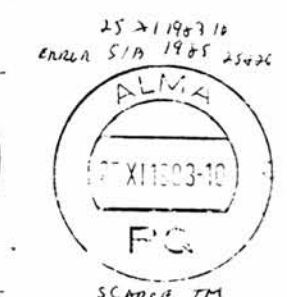
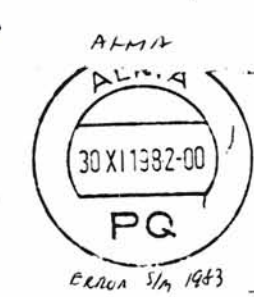
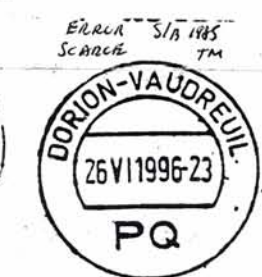


+ M. C. Keown Ltd.



30 VII 1990

ERRORS



The Latest News. As I've been typing, Allan has just sorted out 5500 new K covers.

BLenheim INVERT. This town had an invert from 30 V 1991-16 to 19 VI 1991-17. Other dates in the batch are 5 VI 1991-17, 7 VI 1991-17, and 12 VI 1991-17.

PERTH SLOGAN. Dave Hanes told me about the new PERTH slogan at Stampex. Allan's dates are:

14 VI 1991 BL, 17 VI 1991 BL, and 18 VI 1991. Dave had received his copy in the mail just before Al's earliest. The slogan reads (in 4 lines, in a box): COME ON HOME/175th ANNIVERSARY/PERTH, ONTARIO/JULY 14 TO JULY ??
Pictures and more data next issue.

CORUNNA, ON was using brown ink again in May and June.

ALASKA HIGHWAY SLOGANS. Here's a bit more information on these slogans (cf. the first page of this issue). The handstamps with the same wording but of a larger size is recorded in use at FARO, Y.T., DAWSON CITY, Y.T., FARMINGTON, B.C., AND CHETWYND, B.C. Allan has these K slogans to add to the information on p. 261:

FORT NELSON, BC	6 VI 1990 0	
DAWSON CREEK, BC	14-21 VII 1991 BL	- month error for VI 1991 BL
WHITEHORSE, YT	04 VI 1991.	POSTAL CODE
WHITEHORSE, YT	05 VI 1991.	Slogan - so this is the EKU for the slogan
WHITEHORSE, YT	12 VII 1992 -	Error for VI 1991 (note the dash, from a half turn of the indicia wheel)
WHITEHORSE, YT	13 VII 1993 -1	Error for VI 1991 (the 3 of 1993 is a partly turned number also, with part of the 2 showing)
WHITEHORSE, YT	13 VII 1991 large dot	Same day as above, but the wheels are spinning.
FORT ST. JOHN, BC	25 VI 1991	Also using the Alaska Highway slogan.

That's the latest scoop on the new Alaska Highway slogans on the K machines. Any more out there?

CRESTON, BC Slogan in use on 16 V 1991 1

We'll have a super issue of some sort in late September, if possible. Lots of material is building up for it. Keep the reports coming in. I wonder which towns will be axed this September. There's sure to be some Ks that vanish, so watch for them - and let us know.

