

BNAPS FANCY CANCEL & MISCELLANEOUS MARKINGS NEWSLETTER 63

August 2013

Dave Lacelle

fancycancel@hotmail.com

Group News.

I hope that this newsletter reaches all of you before the Charlottetown convention. It appears that I will now be able to attend the convention – one Vancouver Island to Prince Edward Island road trip coming up! (Why did “that” Island with a population of 146 K rate a bridge, while “we” with a population of 760 K dinna?) Hope to see you there. I have asked for a time slot for a Study Group meeting, however by ‘press time’ it has not been confirmed. (The slot 2:00 pm to 3:00 pm on Sept. 1 was open, but is still unconfirmed.) Please bring any “show ‘n tell items” you might have. Don’t anyone take the ‘bridge’ comment above too seriously...

We have one new member, Mr. C. Ross, from Barrie Ont., and a ‘reinstatement’, Mr. Keith MacKay. Welcome aboard.

I would like to thank the several of you who offered “discounted postage” which I had requested in the last newsletter. A need was answered. The Merville P.M. gets ‘quite a kick out of’ my old postage, she was thrilled a week ago to cancel The King!

I have two member requests.

Firstly, Drew Fountain asks; “I have recently broadened my collecting interest to Canadian postmarks. There are some basics in Unitrade and the Canadian postal site to be slightly helpful, but I have acquired a few postmarks and seek more information. **Who would be the right person or group to contact in BNAPS for other postmark collectors?** Any guidance locating the correct contacts would be very appreciated. ...Drew Fountain drewfountain@yahoo.com (OK, so he isn’t a S.G. member, hopefully this newsletter will encourage him to join. Dues are a mighty \$8.00 a year, three newsletters. What do you say Drew?) This is also the “Miscellaneous Markings” study group, so feel free to send any odd post markings here for the newsletter – page four, the ‘Wolfville oval’ for example.

Secondly, Frank Henry wants to know if **anyone is now actively collecting parcel cancels, and/or if anyone has updated George Olson’s publication** from a mere 30 years ago? <frank.henry123@btinternet.com>

There have been only 10 contributors to this newsletter, this is a bit worrisome, however it may be due to summer’s many other distractions. **Please send me stuff for the next Newsletter.**

One of the primary functions of this newsletter is to discover new information, and/or correct errors in our publication “Fancy Cancels on Canadian Stamps 1855 to 1950”. The Second Edition came out in 2007, and thanks to YOUR contributions, I now have **320 revision notes in my scribbled copy. Perhaps it is time to start talking about a Third Edition?** The book is published by BNAPS, and as an aside – it is a ‘labour of love’ (so to speak) I personally do not receive any financial benefits from sales. (Don’t hear me wrong, I just mean that I am not making this suggestion to make money.)

REVISIONS TO PREVIOUS NEWSLETTERS

None. My, that was easy.

BNAPS FANCY CANCEL & MISCELLANEOUS MARKINGS NEWSLETTER 63 REVISIONS TO FANCY CANCEL BOOK

Also none, except for a few comments in this newsletter about illustrations which could be improved.

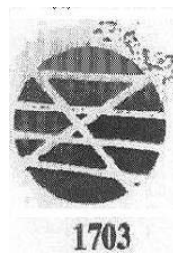
CORRESPONDENCE AND QUERIES

Ian Hallum has sent in a bit more information on L 401, a "DPO" initial cancel used at the Dunbarton UC P.O. in Sept. 1865 (?). The cancel is rather poor, I've messed with the contrast here to try to improve it. I expected a bit more information from the backstamps, however the back is blank. This is unusual for a cross border cover in this period. Ian also reports that there is another very weak unreadable mark on the front. I guessed '65, but the ms date might be '63. Any more information would be appreciated.



Ian also reports that there is another very weak unreadable mark on the front. I guessed '65, but the ms date might be '63. Any more information would be appreciated.

Ron Smith has sent in these items. The first is a better strike of L 280 used at Brookfield Station Ont., Mar. 1898. His other item is also on cover, is similar to Jarrett's 1211, is also similar to our L 1703, and was used at Ottawa Ont., Aug., 1878. The text at L 1703 should thus read "Very similar (Jar. 1211) used Ottawa Ont., Aug. '78." (Sorry Fred.) We are now up to **323** revisions from the second edition!



David Hobden is seeking information on the cancel at right. It is on a partial auction notice from Halton County, the back has part "Equising" on it, and he wonders if the cancel could be from there. The stamps place the piece between 1868 and 1882. Unfortunately the cancel is a fairly common type used at many P.O.'s, and listed in our book as L1515. The illustrated one is from Toronto Nov. '70 to Aug. '71, similar from Barrie Ont., Sept. '70, Vankleek Hill, Ont., Nov. '71, Whittington Ont. Dec. '72, Mount Forest, Ont., Aug. '73, Enniskillen Ont., Nov. '73, Toronto again, July '74, Milton West Ont., Feb. '75, Parry Sound, Ont., Aug. '75, Lindsay Ont., Dec. '75, and half a dozen later examples (up to 1902) which would be beyond expected the use range of the 1/2 cent LQ. I would guess that this was a Toronto receiver cancel.

BNAPS FANCY CANCEL & MISCELLANEOUS MARKINGS NEWSLETTER 63

Harley Cohen sent these in. Firstly, this cork definitely does a good job of cancelling a high value Jubilee! It is similar to a 'doubled' version of the cross cancel L 1071, and should probably be listed. Does anyone know where this was used? The second item is L 1358, a bogeyhead cancel, location unknown, used around 1870 to 1872. The 2 cent L.Q. is appropriate. Harley also sent in this example of one of the "Ottawa 8's" series which also incorporates a patriotic "VR" in the design. This is L 95, Ottawa Ont., ? 1870 to Feb. 1871, so the L.Q. is again appropriate. His last item is L 355, a fancy intaglio "D" used on the W.C. & B. Railway in March 1876.



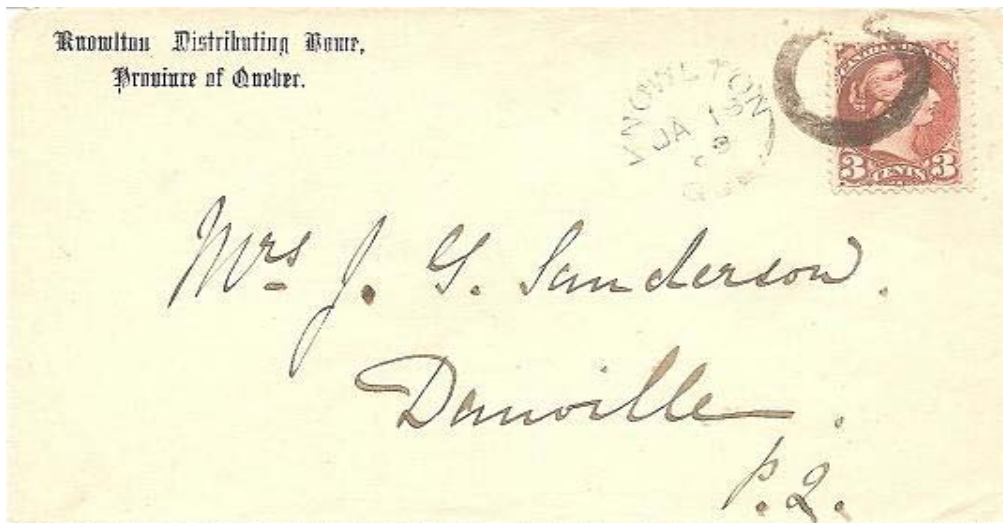
1358



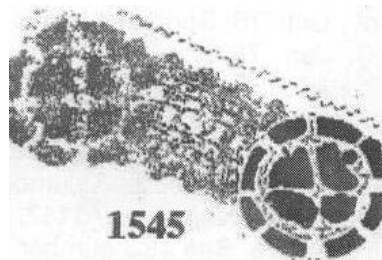
95



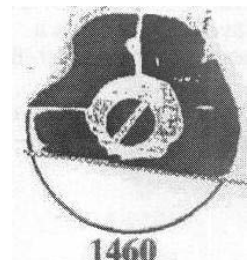
John Burnett sent this lovely example of D 326 (and D 325), here at about ¾ scale. The "cancel" is actually the top of a small (medicine?) bottle, more than 15 different P.O.'s had the idea to do this. It has been reported as a duplex from Lunenburg N.S. in Dec. 1886, and here, Knowlton Que. Jan. 1888. (Is it just a coincidence that this "medicine" is being consumed at Christmas and New Years?) The sender is also interesting, what were they 'distributing' from Knowlton Home? They "distributed" orphans from England to various homes in Canada. Not all were really orphans (given up by parents), and not all were treated well after "distribution". Knowlton Distributing Home took in 4858 boys and girls between 1872 and 1912.



Randy Evans has suggested that the item below is L 1545, I have used a filter on it, and enhanced the centre as best as I can. The cancel is in a rather worn state, L 1545 (location and date unknown, but known on F1) is a possibility, however something similar to L 1460 (also location and date unknown) is also possible. Randy's item was used at Greenway Ont., Dec. 1879. Does anyone else have another example of this?



1545



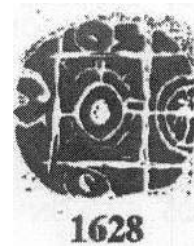
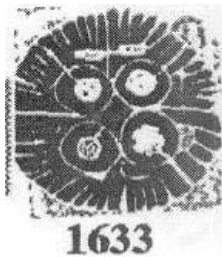
1460

BNAPS FANCY CANCEL & MISCELLANEOUS MARKINGS NEWSLETTER 63

Frank Henry would like information on this “Wolfville NS” oval cancel, which is listed by Olson as used as a parcel cancel in 1868 to 1872, and also as Jarrett 352. This is a very early date for a parcel cancel, it may instead be an unusual type of ‘regular’ date stamp, or may have been borrowed from some commercial use. Any comments are appreciated.



Frank also sent in the example of L 1633 below, which I strongly suspect was from Toronto Ont. Can anyone confirm this? Frank also sent in the third geometric which may be a late state of L1628, Toronto Ont. Mar. 1870 to Dec. '71. Note, this is an unusually long time for a delicate design cancel to be used in a very busy office, perhaps two different cancels are being mixed up here, with his example the 1871 December one, and the book example from the 1870 March Item?



I found this example of the 1870 variety (?) of L 1628 in one of my documents files. Unfortunately I do not know who sent it to me in 2007. Thanks if you recognize this!

Jack Forbes sent in this very colourful item, deep red on a blue stamp. It is similar to our L1533, but with seven segments. This lack of symmetry is unusual, it is much easier to carve a cork to six, or eight even segments.



BNAPS FANCY CANCEL & MISCELLANEOUS MARKINGS NEWSLETTER 63

Bob Turkowski sent in the items below. His first item is another patriotic “VR”, L860 used at Shelburne Ont. Dec. 1875 to July 1876. Shelburne used four different VR’s between Apr. 1872, and Dec. 1876. The town also used at least eight other fancy cancels. I reviewed my examples of the “VR’s”, and concluded that while PM E. Berwick (? Is unidentified fancy initial cancel L 393, an “EB” also his?) was very patriotic, and took the time to carve fancy cancels he was also rather haphazard using them, even “good” strikes are uncommon. Bob’s next item combines features of L 1698 and L1699. This partly explains the similarity of the two cancels, L1698 was recut (a couple of saw strokes) twice, and ended up as L1699. These were used at Ottawa Ont. between Oct. 1874, and Dec. 1876. Several other of the Ottawa series of geometrics show similar recuts, L 1658 may morph into L1662. The next item is probably an early state of L 1548 used Newcomb Ont., Feb. 1876. The stamp is an early 1870’s shade, and this would have to be a late use of the stamp – but possible.



Bob’s next item (below) is possibly an early version (or “similar to”) of L 1134, which was used at Penetanguishene Ont., May 1881, and a “similar to” cancel at Toronto Ont., May 1880. The stamp is probably too early (early 1870’s) for either of these however. His last item is L 358, a “D” used at Stayner Ont., Mar. 1871 to Feb. 1873, with the correct early 1870’s shade.



While researching the Shelburne fancy cancels above, I realized that L 711, a “PAID” cancel (Shelburne Ont., Mar. to July 1877) and L 1599 a geometric (Shelburne Ont., May 1878 to Aug. 1878) are obviously another example of a cancel being recut. (It has also been suggested that 1599 is a symbolic “letter in a box”.)

FAKES, BOGUS AND SPURIOUS ITEMS

I have just two items for this section this time.

Firstly, a spurious “bogeyhead” cancel. It just looks like a bogeyhead, but is really just an odd double strike. The second one is a fake of L 700, it is wrong in several details and is on top of another cancel.



So... hope to see you in Charlottetown

& Good collecting,

Dave.Lacelle