

CANADA POST DELIVERS

BNA TOPICS

Official Journal of The British North America Philatelic Society

COLLECTIONS

The very life-blood of our business is in the collections we buy. We have to buy continually to feed the constant outflow of stamps and covers through sales in the store and by mail. To keep this flow moving at an ever-increasing pace, we must pay fair, competitive market prices. This we do, and we take this opportunity of reminding you that we are always ready to appraise and make a good offer on that next collection, for outright purchase, or sale by Private Treaty or auction if you prefer. Our professional services are at your disposal.

George S. Wegg Ltd.

36 VICTORIA STREET

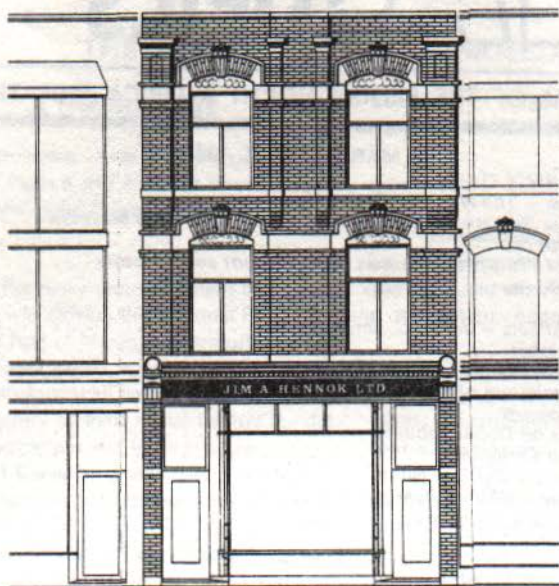
TORONTO, CANADA M5C 2N8

Telephone: (416) 363-1596-7

Trade Inquiries Welcome



NOTICE OF
2ND PUBLIC AUCTION



OUR *SECOND PUBLIC AUCTION* WILL BE HELD IN *MID-JUNE 1985*, ON OUR PREMISES AT 185 QUEEN STREET EAST. PLEASE CONTACT US FOR A COPY OF THE CATALOGUE.

AS ALWAYS OUR CHIEF INTEREST IS IN B.N.A. SINGLES, SETS, POSTAL HISTORY, COLLECTIONS AND WHOLESALE LOTS, BUT WE WILL SELL ANYTHING OF PHILATELIC INTEREST FROM THE WHOLE WORLD.

OUR RETAIL, WHOLESALE, PRIVATE TREATY AND PUBLISHING DEPARTMENTS WILL OF COURSE CONTINUE TO SERVE YOU AS BEFORE. WE BELIEVE THE ADDITION OF REGULAR AUCTION SALES WILL ROUND OUT AND EXPAND THE SERVICE WE PROVIDE TO BOTH BUYERS AND SELLERS.

JIM A. HENNOK WILL ARRANGE, WHEN WARRANTED, *TO TRAVEL ANYWHERE IN THE WORLD* TO SECURE IMPORTANT PROPERTIES. WE WILL PROFESSIONALLY ADVISE YOU IN THE MARKETING OF COLLECTIONS *TO YOUR BEST ADVANTAGE*. WE ARE PREPARED TO PURCHASE YOUR COLLECTION OUTRIGHT, OR ACT AS AGENTS IN THE PRIVATE SALE OF YOUR COLLECTION. NATURALLY WE WOULD BE PLEASED TO INCLUDE YOUR COLLECTION IN ONE OF OUR SPECIALIZED PUBLIC AUCTIONS. YOUR COLLECTION *DESERVES* TO BE PROPERLY AND CORRECTLY VALUED BY SOMEONE WHO ALSO APPRECIATES AND UNDERSTANDS THE FACTORS OF QUALITY, RARITY AND MARKETABILITY. WE ASSURE YOU OF A VERY PLEASANT, COURTEOUS AND PROFESSIONAL TRANSACTION.

JIM A. HENNOK LTD
EST. 1952

185 Queen East
Toronto, Ontario

Canada M5A 1S2
Tel: (416) 363-7757

BNA TOPICS



OFFICIAL JOURNAL OF THE BRITISH NORTH AMERICA PHILATELIC SOCIETY

Whole No. 406

MARCH - APRIL 1985

Vol. 42, No. 2

3	<i>The Editor's Page — The National Postal Museum</i>	Mike Street
6	<i>Canada Post Press Release Re Closing of the National Postal Museum</i>	Ed Whiting
6	<i>Request to Members</i>	
7	<i>BNAPS' Letter of Protest to Members of Parliament and Senators</i>	
9	<i>The President's Corner</i>	
9	<i>Letters</i>	
13	<i>Sketches of BNAPSers — Julian C. Smith</i>	Dr. R. V. C. Carr
14	<i>The RPO Cowcatcher</i>	L. M. Ludlow
18	<i>Postal Guide Illustrated</i>	C. R. McGuire
20	<i>The Inverted Surcharges of 1899 — A Second Report</i>	Julian C. Smith
25	<i>BNAPLEX '85 Program</i>	
29	<i>Consistent Marks on Dollar Jubilees</i>	Howard Twichell
31	<i>The Study Group Centerline</i>	Frank Waite
33	<i>Calendar</i>	
34	<i>Literature Review — BNA Philately in Print</i>	
34	<i>News From the BNAPS Library</i>	Don Makinen
35	<i>Regional Group Ramblings</i>	Jim Goben
36	<i>The Village of Granville — A Brief Postal History, a 'MISSENT' Cover, and the 'Kicking Mule'</i>	Austin Mifsud
38	<i>Patriotic Postcard Series</i>	W. L. Gutzman
40	<i>In Memoriam — Walter Hoffmann</i>	
41	<i>A Handstruck 4½ Pence Currency Rate Marking</i>	Donald Welsh
42	<i>Newfoundland Postal Stationery and Other Stamped Paper</i>	Robert H. Pratt
45	<i>For the Record</i>	
46	<i>A Study of the Telegraph Covers of Canada</i>	W. C. Rockett & L. J. LaFrance
47	<i>BNAPS — The Business Side</i>	
48	<i>From the Secretary</i>	Earle L. Covert
51	<i>Classified</i>	

BNAPS For officers, member services, study groups and regional groups see 'The Business Side' page listed above

BNA TOPICS

EDITORIAL BOARD: Chairman: Clarence A. Stillions; Hon. Chairman: V. G. Greene;

Members: Robert Carr, Derek Hayter, Mike Street, Jack Wallace

EDITOR: H. M. (Mike) Street, P.O. Box 7230, Ancaster, Ontario, Canada L9G 3N6

ADVERTISING MANAGER: Dave Dixon, P.O. Box 1082, Oakville, Ontario, Canada L6J 5E9

CIRCULATION MANAGER: E. R. (Ritch) Toop, P.O. Box 9026, Ottawa, Ont. Canada K1G 3T8

© 1983 by the British North America Philatelic Society

Published Bimonthly at Ancaster, Ontario by the British North America Philatelic Society.

Printed at Dundas, Ontario by Standard Forms. Opinions expressed are those of the writer and do not necessarily represent those of the Society or BNA TOPICS.

SUBSCRIPTIONS are available only as part of membership in the British North America Philatelic Society. For information contact the Secretary, Earle L. Covert M.D., P.O. Box 1070, Hay River, NWT, Canada X0E 0R0. MANUSCRIPTS should be double spaced — typewritten if possible, but legible handwriting is quite acceptable — and addressed to the Editor. LITERATURE FOR REVIEW should be addressed to the Editor. MISSED OR DAMAGED COPIES — contact the Circulation Manager (listed above). CHANGES OF ADDRESS should be sent to the Secretary (see Subscriptions, above).

THE EDITOR'S PAGE

by MIKE STREET

THE NATIONAL POSTAL MUSEUM

A TRAGIC WASTE

(Members, especially those living outside Canada, should read Pages 6 and 7 of this issue for background information before reading the following — Ed.)

The 4 February announcement by Canada Post that it was closing the National Postal Museum on the first of March was carefully crafted. The well-chosen words, a facade of pious intentions about making it all right in the end, cleverly hid the obscenity of their action behind the diaphanous of a government still in its infancy.

In 1981 Canadian philatelists dared to protest — to the then Liberal government and to Canada Post — the attempted (and ultimately successful) installation of a person with a non-philatelic background as Curator of the Museum. It does not take much reading between the lines of the press release to imagine the self-congratulatory chuckles of glee emanating from those who have perpetrated this savage retaliation at the Canadian and world-wide philatelic community.

Angry? Bitter? Yes, both — in spades. Overstating the case? Please read on, and judge for yourself.

CONSULTATION

Did Canada Post consult the Executive of the Royal Philatelic Society of Canada (6000 members), the official philatelic coordinating organization in the country; or the Postal History Society of Canada (600 members); or the British North America Philatelic Society (1500 members), to ask for input, alternatives, anything? Not a chance. *Canada Post did not even consult the National Postal Museum Advisory Committee!* Only a few hours before the notice was released to the press, Rene Marin, Chairman of the Board of Canada Post, told the members of the Advisory Committee that the museum was closing. Period. (As far as can be determined, the Board of Directors of Canada Post Corpora-

tion was not consulted on the Museum closing either.)

LEAD TIME AND RESOURCES

"The Museum is being closed on a temporary basis because Canada Post does not have the lead time and the resources required to provide a permanent home for the institution..."

J. E. (Jim) Kraemer, Curator of the National Postal Museum from its inception in 1971 until 1980, states flatly, "When the lease for the present space was signed (with the House of Commons) in 1978, it was for a five year term. Canada Post knew that there was no guarantee of the lease being extended beyond 1983, and that *the Museum would, sooner rather than later, have to move out of the Wellington Building*, presumably to a permanent building of its own. Even today there is no lack of suitable, government-owned, space available in downtown Ottawa."

To get an idea of how 'resources' have been used recently, consider the following: 1) Since Kraemer's successor as Curator was appointed in early 1982, twenty (20) new people were added to the permanent staff of the Museum; 2) Several of the new staff member's positions were subsequently upgraded (with corresponding sizeable increases in salary for the individuals concerned); 3) A large sum of money was spent turning a portion of the Museum into a miniature art gallery, *while display cases purchased and exhibits acquired for that area were placed in storage without ever being shown to the public.*

Canada Post fails to mention, in discussing resources, two very important items. The first is the sizeable amount of goodwill built up within the philatelic community by Jim Kraemer and the people who staffed the museum in its first 10 years. Few people know that some collectors VOLUNTARILY came hundreds, even thousands, of miles to spend literally hundreds of hours helping catalogue and prepare portions of the collections for display and for use by the pub-

lic. Why is this not talked about? The second item is the fact that, according to Canada Post's own annual report, *collections spent \$23 million on stamps in the last reported year. The average sales for the last 5 years have been over \$20 million per year.* Very few of these stamps ever get used for postage, so this income is almost entirely gravy for Canada Post. If this money is not a sufficient 'resource' to provide for a National Postal Museum, what is?

EXPERTS

"We shall be preserving a nucleus of experts to plan for the reopening of the Museum..."

One would logically presume from the preceding statement that those members of the staff with the most experience at the Museum, especially those who had helped build the Museum from scratch, would be among the 'nucleus of experts' retained.

One would have to think again.

At 4 o'clock on the afternoon of 4 February, the staff were called together and told of the closing. *THE NEXT MORNING, all but 13 of the employees received letters telling them that as of 3 May 1985 their services would no longer be required.* Included in those being released were the Senior Postal Historian (14 years at the Museum, 2+ as Acting Curator), the Research Officer (6 years), the Senior Graphic Display Artist (14 years), both Display Artists (10 years and 8+ years), the Assistant Registrar of Exhibits (2 years), and the three ladies (10, 7 and 2 years) who operated the sales counter in the 'Old Post Office' section of the museum. (One of these ladies has worked for the Federal Government for over 40 years, 30 of them with the Post Office.)

Included among the 'experts' being retained are the 'Education coordinator' (2 years with the Museum), the 'Curator of Fine Arts' (8 months), the 'Curator of Material Culture', i.e. artifacts, (8 months), and the 'Curator of Philately and Postal History'. *This last individual, who has no background in stamps or postal history, started work at the Museum on 7 January of THIS YEAR!* What kind of logic is this?

PHILATELY

In a conversation in 1982, Rene Marin said that philatelists were not the only people the

museum had to serve. Hindsight shows that the statement, quite reasonable in its own right, actually presaged the downgrading of the importance of philately at the Museum.

The first indication came when the position of a senior researcher, who had resigned in anger during the 'search' for a new curator, was left vacant (even while all the new staff were being hired). Then came the infamous 'photo exhibit' — photographs were substituted for stamps in the Museum's exhibit at the 1983 RPSC convention in Oakville.

The philatelic community protested this action of Canada Post's, and there was an apparent reaction to the criticism. It came in the form of the Museum refusing to send an exhibit to the 1984 BNAPS convention in San Francisco, which would have broken a 10-year tradition. Fortunately for BNAPS, the decision was rescinded almost at the last moment, but the RPSC was not as lucky. Shortly before the closing was announced, the Museum informed the RPSC that it did not have time to send an exhibit to the May 1985 convention in Toronto.

In a post-announcement written statement to the *Journal* of the Postal History Society of Canada, Museum Director Mme. Monique Beau-lieu, talks about how *"the temporary closing of the Museum will enable a small nucleus of the staff to work intensely on a development plan."* She comments on the success of the 'education service' in reaching out to the public, and on how the increased curatorial staff will be able *"to better estimate the potential of the Museum's unique collections."*

She then states *"The National Postal Museum has now reached a stage of development where it is crucial to elaborate a statement of purpose. ... We must know more about the objects, documents, and so forth, learn about the men behind the objects, and find out about the socio-economic background in which the postal service evolved. Work will continue to systematically catalogue, organize, preserve, document and increase the collections."*

The risk of giving offence, what a load of manure! How can the Museum do these things when the postal history research element is being put out the door? How can any of it be made ready for the public without the design and artistic staff to prepare displays? What about the work that remains to be done to prepare exhibits on the various stamp issues not yet touched in the Museum's activities to date? If a statement

of purpose is needed, if the collections have to be catalogued, what in heaven's name has been going on these last 14 years? Those of us who visited the Museum in either of its locations know that a tremendous amount of 'blood, sweat, toil and tears' was expended by the staff who built the museum, so what are these people now in charge talking about?

Nowhere in the Director's statement of plans and intentions to the *Journal* does the word 'philately' appear. This can only mean that philately will not be a part of the 'new' Museum. Interviewed by *Stamp Collector* Mme. Beaulieu seemed to confirm this when she was asked why the philatelic and artistic staff were being let go. Her response, quite direct for someone considered by most observers to be primarily a conduit for the decisions of others, was "They did not fit into my plans." Sad to say, it is more likely, especially with all these people being turfed out, that Canada Post has no sincere intention to have a 'new' Museum — ever.

ART

As mentioned above, a large amount of money was spent last year turning a portion of the Museum into a small art gallery. The purpose of this was to have a place to hang the original paintings used as the designs for the 12 stamp 'Canada Day' miniature sheet of 1984. Why this was done, with the National Gallery (of Art) only a 5-minute walk away, is still being questioned.

A visit to the Museum the week after the closing was announced afforded the first opportunity to see the results of this expenditure of

tax dollars. (While the little cards beside the paintings say 'Gift of the Artist', it is almost certain that the taxpayer's contribution toward the paintings themselves was not small either.)

Although not an expert on paintings, regular visits to major art institutions in Canada, the United States, England, France and Italy have provided some education in the field. Even after trying honestly to be objective about them, the reaction was one of profound disappointment. They are not even good paintings! Take a strong magnifying glass to the stamps, the 'miniature works of art' produced from them. Look closely, particularly at the faces and figures, and see for yourself.

THE END

There is a great wealth of skilled and talented people in this wonderful country. It is terribly sad, and embarrassing to me as a Canadian, to find that the people currently responsible for the National Postal Museum were not taken from this pool.

Does this action mean the end of the National Postal Museum? In its present form — perhaps. Some form of National Postal Museum, acceptable to both the philatelic community and to the public at large, will eventually emerge, probably without the dead hand of Canada Post on its shoulder. If we in the philatelic community work together, harder than we ever have before, it will happen — and soon. It is simply not acceptable for a major industrial country to just put its Postal Museum in a box, and 'mail' it away.

CANADIAN PHILATELIC SOCIETY OF GREAT BRITAIN

Membership Secretary:

DAVID SESSIONS

3 Langfield Close, Henbury, Bristol BS10 7ND England

For all aspects of B.N.A. PHILATELY: 'MAPLE LEAVES'

£6.00 PER YEAR

Published five times per year

• WRITE FOR SPECIMEN COPY •

TEXT OF CANADA POST PRESS RELEASE ANNOUNCING CLOSING OF NATIONAL POSTAL MUSEUM

CANADA POST TO CLOSE NATIONAL POSTAL MUSEUM

4 February 1985--

OTTAWA — Canada Post Corporation announced today that the National Postal Museum, which has occupied space in the Wellington Building opposite the Parliament Buildings since 1980, will close March 1, 1985 for an indefinite period.

Arrangements are being made to ensure that the National Stamp Collection and the Philatelic Library located in the Museum will be available to the public at another Ottawa location in the near future.

The move from the Wellington Building, which is part of the Parliament Hill complex, is being made because the 3,000 square metres occupied by the Museum is needed to provide offices and other facilities for Parliamentarians.

The Museum is being closed on a temporary basis because Canada Post does not have the lead time and the resources required to provide a permanent home for the institution — a project requiring millions of dollars in capital and several years of planning and development.

In the meantime, arrangements are being made to house the National Stamp Collection — an extensive array of Canadian and foreign stamps — and the Philatelic Library — the largest collection in Canada of books and research materials on this subject — in another convenient location.

All other items now in the Museum will be placed in protected storage.

In announcing the decision today, André Villeneuve, Vice-President, Corporate Communications, said, "Despite the need to close the Museum at this time, we want to ensure that the National Stamp Collection and the Philatelic Library, two elements of Canada's cultural and historical heritage, will continue to be available to the philatelic community and the public at large.

"We shall be preserving a nucleus of experts to plan for the re-opening of the Museum on a proper scale when this is possible. Consisting of approximately one-third of the present staff of 32, this nucleus will be required to provide the appropriate care for the Collection and Library during the transition period. The Corporation is committed to making every effort to redeploy surplus employees through the established corporate redeployment program."

The National Postal Museum was opened in 1974 at Canada Post headquarters in the Sir Alexander Campbell Building at Confederation Heights. It was moved temporarily to the more accessible Wellington Street location when it outgrew the space available.

The Museum, which has had an extensive public program, will continue to maintain its commitments to schools, other groups, and the general public until March 1. Groups with commitments after that date will be contacted individually.

Canadian members are urged to write their Member of Parliament to protest the closing of the National Postal Museum (— — M.P., House of Commons, Ottawa, ON K1A 0A4 — postage is free).

Members living outside Canada who wish to register their opinions on the Postal Museum situation should write to the President of BNAPS — E. J. Whiting, 25 Kings Circle, Malvern, PA USA 19355.

TEXT OF THE LETTER SENT TO ALL MEMBERS OF PARLIAMENT
AND SENATORS PROTESTING THE CLOSING OF THE NATIONAL
POSTAL MUSEUM

British North America Philatelic Society

EARLE L. COVERT, M.D., SECRETARY
Box 1070
HAY RIVER, N.W.T. X0E 0R0



Office of the Secretary

February 8, 1985

Dear Member of Parliament/Senator:

Our Society is the largest organization devoted strictly to the study of the stamps and postal history of Canada, and the Provinces of Canada before Confederation. We are writing to ask for your assistance in stopping an action announced earlier this week in Ottawa. We refer to the statement by the Canada Post Corporation that it is going to close the National Postal Museum 'temporarily' on March 1. Apparently only the Museum Library and the National Stamp Collection are to be quickly relocated and made available to the public.

Our concern is prompted by the fact that, since this announcement, **ALL OF THE RESEARCH, POSTAL HISTORY, EXHIBIT DESIGN AND PHILATELIC SALES COUNTER PERSONNEL, AMONG OTHERS, HAVE RECEIVED LETTERS TELLING THEM THAT AS OF 3 MAY 1985 THEIR SERVICES WILL NO LONGER BE REQUIRED BY THE NATIONAL POSTAL MUSEUM.** These employees were told that attempts will be made to relocate them to other positions within Canada Post. Many of these people have long service with the Museum, some as far back as the period before the Museum first opened in 1974.

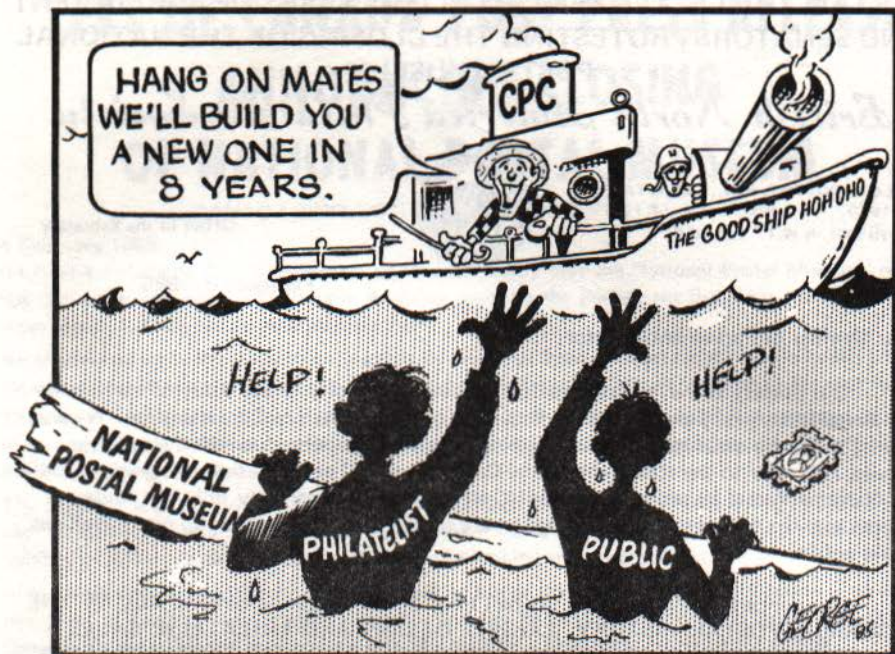
The people being effectively dismissed include almost all of the Postal Museum staff whose work is most important to the philatelic community. We cannot see how a new Museum can be built or even planned without people in these positions.

It is also difficult to see how research can be done or displays prepared while a new permanent home is being found, unless Canada Post's intention is to discontinue Museum research and exhibition activities altogether. Lack of a permanent location cannot be used as an excuse for eliminating this part of the Museum's activities for the simple reason that all of the Museum's fine work to date was accomplished while the employees were working in temporary quarters.

It is our considered opinion that the research and exhibiting activities of the National Postal Museum are a vital part of the preservation of our National Heritage, and we ask for your help in seeing that this attempt to destroy many years of hard work is not allowed to succeed. Please help us to keep the National Postal Museum open, even in another temporary location. If Canada Post Corporation is not interested in sustaining the Museum, then your help in seeing that it is transferred to Museums Canada or to the National Museum of Man is requested.

Yours sincerely,

Earle L. Covert



Does Your Philatelic Library Need A Transfusion?

If the answer is yes, why not send for the greatly expanded
BNAPS Book Department list (postfree)

Here are a few titles from the list—

	Retail	BNAPS Price
Canada Specialized Postage Stamp Cat. (1984 ed.)	5.00	3.75
Scott 1984 Spec. Cat. of Cdn. Stamps & Covers	3.50	3.00
1984 Canada Meter & Permit Postage Stamp Specialized Catalogue	10.00	8.50
Hennok-Arnell Transatlantic Mails	18.00	18.00
Milos — Edward VII Sup.	2.95	2.50
Milos — Admiral's Sup.	4.95	4.50
The Canadian Patriotic Post Card Handbook by W. L. Gutzman	12.95	10.50

Remember—These and many, many other books are available from the
BNAPS Book Dept.

Please note that all orders MUST be prepaid. Prices shown are postpaid (Book Rate).

Please add \$1.00 per order for handling.

For payment in U.S. Funds, deduct 15%.

Please allow 3-4 weeks for delivery.

BNAPS BOOK DEPARTMENT

P.O. Box 1082

OAKVILLE, ONTARIO, CANADA L6J 5E9

THE PRESIDENT'S CORNER

by Ed Whiting



APPOINTMENTS (1)

In regard to my request in the last TOPICS for officers to line up replacements in case they should be needed, I am pleased to announce the appointment of Jim Catterick of Brampton, Ontario as Assistant to Sales Circuit Manager Bob Jamieson.

Other announcements will follow from time to time. In the interim, I hope that each of you still without a backup will do your best to find one.

WALTER HOFFMANN

Elsewhere you will find an article in memory of Walter Hoffmann, our first President, who passed away last fall. Those of us who knew Walter greatly valued his fellowship and work on behalf of the society. We will miss him.

THE NATIONAL POSTAL MUSEUM

Mike Street's column on P. 3 will bring you up to date on the situation at Canada's National Postal Museum. It was very frustrating sitting

here in February, knowing what was going on and not being able to take a more direct part in our action on this serious matter. I was consulted and gave advice and approval, but after discussion I felt that it was advisable to limit direct action to our Canadian members.

I would like to thank those who arranged our action, particularly Mike, Earle Covert and Len Woodward, and also thank their families for putting up with the upheaval this sort of thing brings. (I understand that Mike's daughter Alison helped put letters in envelopes, but balked at sealing them!)

Rest assured that we will keep you posted.

SCOTT'S MOVES WEST

The recent announcement that the Scott Publishing Company has been sold to the Amos organization, owners of Linn's Stamp News, has been greeted with much interest. Let us hope that the new management will do something to help relieve the problems caused by multiple numbering systems in Canada — a concern of BNA collectors.

LETTERS

SEMI-OFFICIAL AIRMAIL REPORT READY

After twenty years of research and study, the Canadian Semi-Official Airmails Study Group of BNAPS now has its Report on those emissions completed.

The photo-copied report, which consists of 65 typewritten pages, includes a brief History

of the Companies and Associations that issued stamps or labels, and the information compiled by the Group on the stamps.

This Report does NOT replace the handbook on which Trelle Morrow has been working, which will be published with the cooperation of the BNAPS Handbook Committee. Rather, the Report will supplement the book.

Plan Now To Visit

The most outstanding philatelic event of the season in Canada ...



STAMPex canada

ROYAL '85
24 - 26 MAY 1985

The event takes place at The Sheraton Centre in Toronto and features:

- Exhibitions
- Outstanding International Bourse
- Seminars
- Many more attractions

Further information can be obtained against SASE from:

Stamp Exhibitions Canada Inc.

10-1300 Kamato Road
MISSISSAUGA, ONTARIO
Canada L4W 2N2
(416) 625-2291

We plan on having only 100 copies ordered, and I would appreciate it if you could find space in TOPICS to let the members know that the report will be mailed POSTPAID on receipt of \$10.00 Canadian or \$7.00 U.S. funds. Requests for copies must be sent to:

Houghton E. Sanguinetti, Editor
Semi-Official Airmail Study Group
1960 Union Street - Apt. 21
Clearwater, Florida, 33575
U.S.A.

MORE ON PHILATELIC CROOKS

May I be allowed to supplement Harry Lussey's article on Philatelic Crooks.

Firstly, I deplore the easy use of the term 'dealer' by any collector, or promoter, who decides to sell stamps. Unfortunately, there does not seem to be an acceptable alternative title.

Secondly, as a member of CSDA, and APS (D), I can assure TOPICS' readers that memberships are not handed out until sponsors have been contacted and references checked. In the case of applicants to CSDA, a certain standard of philatelic expertise is required before an application is even considered by the Executive.

The CSDA will shortly be publishing an updated Membership Directory which will be available FREE, postpaid, to anyone requesting a copy. This will provide interested readers with a list of honest reliable dealers.

In conclusion, may I expect to see an article giving the dealers' side of the story - the approvals not returned, the blatant forgeries, the substitutions, . . . ?

B. J. Martin
Kitchener, Ontario

(If someone can prepare an article which gives the dealers' side of the story, without providing unscrupulous types with a 'How To' manual, TOPICS would certainly print it - Ed.)

CANADIAN CHAPTER OF AAMS

Twelve Canadian members of the American Air Mail Society (AAMS) formed a Canadian Chapter of the AAMS during the recent Canada 84 Philatelic Exhibition at Montreal. Any member of the AAMS may join this chapter by contacting myself at 16 Harwick Crescent, Nepean, Ontario, K2H 6R1. Dues for the Canadian

Chapter are \$5.00 Canadian per year. The objective of the Canadian Chapter of the AAMS is to promote aerophilately in Canada, particularly all aspects of Canadian aerophilately. The President is Mr. Pat Sloan of Ottawa, Ontario, a long-time member of the AAMS, an enthusiastic aerophilatelist (particularly of pioneer flights across the South Atlantic, and a retired RCAF aircrew officer). Those who are not AAMS members but who wish to join the Canadian Chapter should write to me as one must be an AAMS member before joining the Canadian Chapter. I look forward to hearing from TOPICS' readers.

R. K. Malott

STICK 'N TICK ADHESIVE

The article on Stick 'n Tick (Nov.-Dec. 84) carried a warning to readers about 'creeping' of the adhesive used on the labels.

This adhesive will continue to creep, and will go through the cover inside two years; the album page will suffer in about 5-8 years, then other pages behind will follow.

The way to avoid damage from these 'tacky' labels is to warm them, very carefully lift them by use of a slim blade, clean off the gum with lighter fuel (but not in a room with any kind of naked light) and then replace it in the same position, using gum arabic, or non-creeping adhesives. But, best of all, never use them for address labels or anything.

Harry Hayes
Batley, West Yorkshire
England

NEWFOUNDLAND STUDY GROUP

We are in the process of organizing a Newfoundland Study Group. Anyone interested should contact the undersigned at 5031 Eskridge Terrace, N. W., Washington, D.C. 20016.

C. A. Stillions

COLLECTIONS

Disposing of collections to the best advantage can sometimes become a complex problem. I have the experience and ready access to the best markets for any type of collection. This includes the International British market as Canadian Agent for Robson Lowe Limited of London, England.

George Wegg

Box 68, Station O, Toronto, Canada
M4T 2L7 (416)489-4683

WE'VE GOT YOU COVERED!

With four active houses on three continents, the Harmer network covers the global philatelic scene. Close liaison between our Galleries in New York, San Francisco, London, and Sydney means that *your* stamps can be sold to maximum advantage in the proper market.

When selling — or buying . . . Harmers makes that important difference. Write or phone today for details.

HARMERS INTERNATIONAL

Philatelic Auctioneers To The World For More Than Six Decades

New York: 14 East 33rd Street, New York, NY 10036 Phone: (212) 532-3700
 San Francisco: 49 Geary Street, San Francisco, CA 94102 Phone: (415) 391-8244
 Also in: London, England & Sydney, Australia



BUY IN CANADA AND SAVE! THE US DOLLAR IS WORTH A SUBSTANTIAL PREMIUM AT THE PRESENT TIME

CANADA MINT AIRMAILS — 1985 NEVER HINGED AT LOW PRICES

Scott. No.	Price	Scott. No.	Price	Scott. No.	Price
C1 1982 Allottery . . .	6.00	C5 5c Doves/Ship . . .	2.50	CE1 10c 1942 SD Air . . .	2.00
C2 5c 1950 . . .	40.00	C6 Steamer & Plane . . .	2.50	CE2 17c 1943 SD Air . . .	2.50
C3 6 on 5c . . .	6.00	C7 8c War . . .	3.75	CE3 17c 1946 . . .	4.00
C4 Ottawa Conference . . .	12.50	C8 7c War50	CE4 17c 1947 . . .	4.50
		C9 7c Goose45		

Total retail for the complete set of 13 stamps is \$87.20. You may order individual stamps at the prices listed, or buy the entire lot for only \$82.50, including postage and registration. (Price \$80 US)

CANADA MINT NEVER HINGED OVERPRINTED OFFICIALS — JANUARY 1985

It has been years since the last Canadian stamps were overprinted for official use. Several of these desirable stamps were issued in quantities of less than 50,000. The 50c Lumbering "OHMS" overprint is reported at only 30,000. While supplies last we are pleased to offer all issues at these low prices!

Scott No.	Price	Scott No.	Price	Scott No.	Price	Scott No.	Price
O1 1c green OHMS . . .	1.50	O15 4c carmine90	O29 4c orange "G"75	O45 20c green Paper . . .	1.45
O2 2c brown . . .	15.00	O15A 5c blue . . .	1.50	O30 20c Paper "G" . . .	2.00	O46 1c 1963 brown50
O3 3c rose violet . . .	1.70	O16 1c green "G"12	O31 7c Goose . . .	2.25	O47 2c green50
O4 4c carmine . . .	2.20	O17 2c sepia70	O32 81c Tatum "G" . . .	15.00	O48 4c carmine60
O6 10c olive . . .	4.00	O18 3c rose violet85	O33 1c 196320	O49 5c blue "G"30
O7 14c black brown . . .	7.00	O19 4c carmine85	O34 2c green25	O51 7c Air "OHMS" . . .	9.00
O8 20c slate . . .	20.00	O20 5c blue75	O35 3c carmine rose25	O52 7c Air "G" . . .	17.00
O9 50c Lumbering . . .	200.00	O21 10c olive . . .	3.00	O36 4c violet45	E01 10c SD "OHMS" . . .	18.00
VF . . .	200.00	O22 14c black brown . . .	6.75	O37 5c blue "G"45	E02 10c SD "G" . . .	30.00
(JOB US Funds \$220.00)		O23 20c slate . . .	16.00	O38 50c Textile . . .	4.25	O38A 50c Flying "G" . . .	3.25
O10 51c Ferry . . .	95.00	O24 50c Oil "G" . . .	12.50	O39 10c Eskimo65	O39A 10c Flying "G" . . .	1.10
O11 50c Oil OHMS . . .	35.00	O25 81c Ferry "G" . . .	190.00	O40 1c brown20	O40A 20c Flying "G" . . .	5.50
O12 1c green20	O26 10c Fur "G" . . .	1.25	O41 2c green30		
O13 2c mauve50	O27 81c Fishing "G" . . .	130.00	O43 4c violet80		
O14 3c rose violet75	O28 2c olive green35	O44 5c blue40		

Total retail for the complete set of 56 stamps is \$913.37. You may order individual stamps at the prices listed or buy the entire lot for only \$875.00 including postage and registration! (Price US funds \$638.00). All prices in Canadian funds unless noted differently. If paying in US funds, please deduct 27% from prices in Canadian funds only. Visa or Master Card accepted. All prices subject to change without notice.

VISIT OUR STORE AT
 211 Yonge Street (Upper Mezz.)
 Downtown Toronto
 Phone (416) 863-1485

BNA — BRITISH COMMONWEALTH
 (AUCTION — PRIVATE TREATY) — BOUGHT & SOLD
 Consignments accepted for our auctions — min. \$500 realized value.
 Send for FREE auction catalog and price list.

JOHN H. TALMAN LTD.

Box 70, Adelaide St. P. O., Toronto, ON, Canada M5C 2H8



SKETCHes of BNAPSers

by Dr. Robert V. C. Carr

SKETCH No. 204 JULIAN C. SMITH



This time we have an eminent 'Appleknocker', from Ithaca, N.Y. — Julian C. Smith. Although born in Montreal, he is now a U.S. citizen, having been in Chemical Engineering at Cornell University for both his education and his work, teaching. In 1975, he became Director of the School of Chemical Engineering. Julian has been

abroad twice as a visiting professor, and does consulting work with several large corporations. He belongs to the major chemical societies and has been honored in many ways. His publications, both books and many technical articles, also keep him very busy.

Philatelically, Julian has a magnificent collection of unused Canada, started some twenty-five years ago (although he was a collector as a youngster — even Secretary-Treasurer and a charter member of the Westmount Stamp Club as a teenager). His teachers were Jim Sissons and Bill Maresch. They have coached him well, as evidenced by his many awards over the last ten years, including the Grand at our '81 show. His new interest is modern methods of detecting forgeries, and he has a second article coming up for TOPICS (*in this issue — Ed.*) on the 1899 surcharges.

Fortunately, we are now seeing more of Julian and his lovely wife at our shows — you can't miss him, as he is a tall one — and hope to see more of his superb material.

MAY WE SEND YOU A COPY OF
HENNOK'S

MINT CANADA Wholesale List

- * From Scott #34 to date
- * Hinged and never hinged
- * Fine & Very-fine grades
- * Per 10 and per 50

JIM A. HENNOK LTD.

185 Queen Street East
Toronto, Ontario, Canada
M5A 1S2

EXPERIENCE

From before the Reford Sales of 1949-50 to the present I have been representing discriminating buyers at major sales in Toronto, New York, and London. Your enquiries welcome.

GEORGE WEGG

Box 68, Station Q,
Toronto, Canada.
M4T 2L7 (416) 489-4683



The RPO Cowcatcher

Lewis M. Ludlow
5001 - 102 Lane N. E.
Kirkland, Washington 98033

HOME AGAIN

We are now installed in our town house in Kirkland, *FINALLY*; wish we could say that everything is unpacked but there is still about 20% to go to reach that objective. Although we will continue to travel to Japan and Asia from time to time for business consultation, we are glad to be home again permanently in America; we will not again move away from our native shores. We have already had our first visitor, Ken Ellison, from Oyama, for an afternoon of discussion of steamer and military cancellations, and made our first visit to Vancouver for Sunday brunch with Bill and Megan Robinson.

Bill has really started moving with the R.P.O. Study Group Newsletter; two issues already in 1985, meaty and full of interest, and a minimum of four more promised during the balance of the year. We urge all BNAPSers interested in railways to come on board with the R.P.O. Study Group; send your 1985 dues — C\$6.00 (U.S. \$5.00) to Bill Robinson, 5830 Cartier St., Vancouver, B.C. V6M 3A7. Bill has already been in touch with the Calgary Committee to set up the R.P.O. Study Group meeting for BNAPEX '85, at which time we hope to see a number of R.P.O. exhibits, which were a glaring omission at our recent show in San Francisco.

NEW TRACK — REPRISE

In our last Cowcatcher, we detailed the new discovery of Bob Chaplin, Q-52Ad JOS. LABRECQUE / LEVIS & SHERBROOKE, Type 6G; now that our photos have caught up with us, we can illustrate this excellent find. This mock-up pair was probably affixed as two singles — separated rather than a joined pair — making the cancellation more circular than oval; however, these two hairline (not visible in illustration) stamps were obviously mated.

REDISCOVERED TRACK — REPRISE

In Annex II (July/August 1984 Topics P. 43), we relisted RR-18A CANADA CENTRAL R'WAY MAIL CLERK / +, Type 6, reported by Frank Waite. We illustrate same herewith, both on piece and in enlargement. This strike is a backstamp on a piece of registered Crown Lands correspondence from PROSPECT / U.C. (double split ring), franked with two 3¢ and one 2¢ Small Queens for the 8¢ registered rate required in



Bob Chaplin



Frank Waite

1876. RR-18A is a very rare cancellation; this is the only example that we have ever seen. Originally listed in Shaw's 1963 Catalogue, credited to Gillam and Hollands, it disappeared from sight for almost twenty years and was delisted in our 1982 publication. We wonder if this illustrated example from Waite was the basis of the original listing? It's very interesting to note that there are only six of these so-called 'cartwheel' type cancellations (circa 1853-1876) in the Railroad Section: RR-7 & RR-64 - Both Type 5 (single ring); RR-18A, RR-78, RR-143 & RR-181 - all Type 6 (double ring). This rediscovery of Waite is by far the rarest of the pack!

MORE RARE TRACK

Before our leaving from Japan, Bob Soper submitted only the second recorded strike of RR-89 INTERCOLONIAL RAILWAY / N.S.,

Type 4E, May 5, 1873. Again, we have illustrated the full cover that offers the most fascination - after digesting the rarity of the strike, of course. The cover, origin unknown, was sent to Liverpool, via the 'Br. Barque "Harold"', with apparent franking of a pair of 3¢ Small Queens; however, in 1873 the British Packet rate via New York to Great Britain was 15¢. Admittedly in water over our heads, not being knowledgeable in Small Queen rates, we would appreciate comments on the movement of this cover to Liverpool. Our amateur theory - there is a 10¢ Small Queen missing from the upper right corner, an overpayment of 1¢? A professional opinion, please.

We have been intrigued by this R.P.O. since Ross Gray's original discovery, which is dated 27 November 1872; Soper's find extends the period of use by some six months. Still and all, the period of RR-89 fits very neatly inside the



Frank Waite



Bob Soper



Bob Soper

1871-1874 use of RR-88, an almost look-alike cousin of RR-89, differing only on the bottom where the double line arc is either complete (RR-88) or has 'N.S.' in the middle of the arc (RR-89). Were the two hammers made at the same time? Can we anticipate an extension of period for RR-89? Although RR-88 is much more common than RR-89, we look forward to additional input on both of these listings.

SIDE TRACKS

In the last twelve months we have received, and illustrate herewith, two interesting collateral items on the activities of the Canadian Pacific Railway overseas. The first is a small overprint — 'C.P.R.' inside an oval — in orange on a Japanese 5 sen orange-yellow of the regular issue of 1899-1908, while the second is a 'U'-shaped black overprint of CANADIAN PACIFIC RAILWAY on a British 2d orange of the regular issue

of 1912-1922. We have been able to spot the former in a specialized Japanese catalogue and hope to soon get a detailed translation; apparently, this was an internal control overprint (as in a precancel?) at the Canadian Pacific Steamship offices in Yokohama. On the latter, we were unable to turn up any details or explanations in our library, although we seem to recall from our youth similar examples in the bulk British lots that passed through our hands.

Who among our readers can provide further details on these two stamps and the activities of the C.P.R. abroad? We have checked the bibliography of Morin with no positive result. Are these two simply isolated examples of local option, or were they part of a much larger program recognized by the foreign postal authorities involved? There may be a simple answer for these two C.P.R. overprints, but thus far such has escaped us; we would appreciate hearing from anyone who can shed further light on the subject.



L. M. Ludlow



L. M. Ludlow

CANADIAN COVERS

WANTED

Ontario towns, Squared Circles, Western, RPO's, Military, Flags, cards, rates, etc. (also better cancels on stamp). Individual pieces, accumulations, collections and larger lots wanted. Have same to offer.

SQUARED CIRCLE EXCHANGE AND
CORRESPONDENCE INVITED

GRAHAM J. NOBLE

P.O. BOX 80

KINGSTON, ONTARIO

BNAPS - CPSGB - RPSC - APS - PHSC

BRITISH EMPIRE and BNA

We carry one of the largest stocks including specialists material. Want lists accepted. Why not drop us a line.

Peter Singer

Post Office Box 46138, Station "G",
Vancouver, B.C., Canada V6R 4G5

Members: A.S.D.A., B.P.A.,
P.T.S., etc.

Canadian Auction

features BNA POSTAL HISTORY
STAMPS, FREAKS, VARIETIES

Send for FREE copy of our deluxe Auction Catalog.

Robert A. Lee

(604) 542-5169
P.O. Box 937, Vernon, BC,
Canada V1T 6M8

Member

ASDA, BNAPS, CSDA, RPSC

The
STAMP

SHOPPE

Stamps of The World
AND COVERS

AUCTIONS

ALL WORLD AUCTION SALE

CLASSICS • MODERN RARITIES • COMPLETE COLLECTIONS, etc.

Inquiries invited
CATALOG UPON REQUEST

NO 18% COMMISSION
TO BUY, ONLY 18%
COMMISSION TO SELL

The Stamp Shoppe Auctions
P.O. Box 56, Postal Station 'A'
Fredericton, N.B. Canada E3B 4Y2

MONTHLY
SALE

by C. R. McGuire
BNAPS LIFE MEMBER

8. Newspaper Postage

(Continued)

Articles 5 and 6 in this series (Sept-Oct and Nov-Dec 1984) discussed postage for newspapers. In the November-December article, the one cent per pound bulk rate was discussed and illustrated. Space did not permit mention in that article of the bulk rate for local delivery where there was letter carrier service.

Arthur Leggett of Toronto kindly sent me the accompanying photographs. As can be seen,

they provide the finest possible illustration of the different charges — the same number of identical stamps paying the two different rates, and 50¢ 'Widows Weeds' at that! Thank you, Art.

The following text is taken from another bulk postage payment booklet, different from the one illustrated in the September-October article:

"Record of British and Foreign newspapers and periodicals brought into Canada and posted by booksellers or news agents for transmission to regular subscribers in the Dominion; or, specimen copies of newspapers and periodicals posted in Canada, published not less frequently than once a month, and posted at the office where published for delivery in Canada or the United States, and all periodical publications printed and posted as above but published less frequently than once a month.



1. Five 50¢ 'Widows Weeds' paying the 1¢ per pound rate

This matter is subject to the bulk rate of 1 cent a pound or fraction thereof, which must be prepaid by postage stamps in the following manner. The clerk receiving the matter will weigh it and enter the weight and name of the bookseller or news agent, or publication, at the head of the page and initial the entry. The person posting will then attach stamps of the value of the required postage below this entry and return to the clerk who will cancel the stamps, with a clear well inked impression of the dated and cancelling stamp (sic) of the office and return the book to the sender. The above matter posted for local delivery where there is a free delivery by letter carrier must be prepaid by stamps affixed to each package at the rate of 1 cent per 4 ounces."



2. The same stamps paying the 1¢ per 4oz local letter carrier rate

B.N.A. COVERS

We always have over 5,000 B.N.A. covers in stock

Selections gladly sent B.N.A.P.S members

on approval

NEW ENGLAND STAMP COMPANY

BNAPS

Established 1893

ASDA

643 FIFTH AVENUE SOUTH

NAPLES, FLORIDA, U.S.A. 33940

THE INVERTED SURCHARGES OF 1899 — A SECOND REPORT

by Julian C. Smith

A previous paper on the surcharges of the 1899 Provisional issues (*BNA TOPICS*, March-April 1982) reported the results of chemical analyses of the inks of both normal and inverted surcharges. It was hoped that this would be a way of determining whether or not the inverted surcharges are all forgeries, as is generally believed, or whether some might be genuine. No significant difference between the inks was found, however, and the question remained open.

This article presents the results of additional chemical studies of some known forgeries and of an examination of the form of the surcharges, both genuine and fraudulent, of a large number of examples of the Provisional Issue.

HISTORICAL BACKGROUND

The Provisional stamps were placed on sale in July and August 1899, and were listed in the 1901 edition of the Stanley Gibbons catalogue *Stamps of the British Empire*. The inverted surcharges were mentioned in the March 1900 issue of the *American Journal of Philately*, and were

listed in the 1902 edition of Stanley Gibbons. For many years it was assumed that genuine inverted surcharges existed; they were listed by Stanley Gibbons, Scott, Holmes, Boggs, and others. It was known, however, that many were forgeries, and in 1973 and 1974 a number of experts concluded, after careful review, that none of the inverted surcharges is genuine. Inverted surcharges are no longer listed in most catalogues, although 'genuine' inverted surcharges are illustrated and discussed in *Lowe's Encyclopaedia, The Empire in North America*, Vol. V, page 218.

STAMPS TESTED

Through the courtesy of Ed Richardson of League City, Texas, it was possible to examine 93 mint copies of the provisional stamps, 23 used copies, and three covers. These included a mint Numeral stamp with surcharge inverted, a 'certified forgery.' (Fig. 1) Also included were one mint Leaf stamp with an inverted surcharge, and several used stamps, both Leaf and Numeral, with double, triple, or inverted surcharges. All



1. Photo from the certificate of a forged surcharge.



2. Normal surcharge—Leaf issue



3. Normal surcharge—Numeral issue



4. Variety—'ink showing through'



5. The 'certified forgery,' inverted surcharge on Numeral.



6, 7. Forged double surcharges, Numeral issue



8. Forged triple surcharge, Numeral issue



9. Forged inverted surcharge—leaf issue



10. Forged inverted surcharge—Numeral issue



11. Inverted surcharge, Numeral issue
(circle fits well).



12, 13. Inverted surcharges, Leaf issue (circle fits well).



of these used examples were stamped 'FORGED SURCHARGE' on the back. Tests were also made of the 'ink showing through' variety, in which the surcharge, though normal in other respects, is visible from the back of the stamp. (Fig. 4)

CHEMICAL TESTS

Chemical analyses were made of the inks of the surcharges on four mint stamps: a normal Numeral; a 'show through' Numeral; a Numeral with inverted surcharge (the certified forgery); and a Leaf with inverted surcharge. The analyses were made in the laboratory of the Department of Materials Science and Engineering of Cornell University, Ithaca, New York, using the electron microprobe technique described in the previous article.

The results were similar to those of the earlier tests. All of the analyses were essentially identical. That is to say, the inks used for surcharging have the same chemical composition — including that on the known forgery. Analyses of the inks obviously cannot be used to establish the genuineness of any of these stamps.

THE 'CIRCLE TEST'

Wm. H. P. Maresch of Toronto suggested a test for genuineness of the surcharges, based on the fitting of a circle to the top parts of the letters. Several circles of slightly different sizes were drawn in black ink on a sheet of clear plastic. By experiment, it was found that a circle 25 mm (0.99 inch) in diameter, when overlaid on the stamps, just touched the top of all the letters of the normal surcharges as illustrated in Figs. 2 and 3. The fit proved to be very good with all the normal stamps examined, a total of 98 copies, including both Leaf and Numeral issues. It was also good with 10 copies of the 'ink showing through' variety.

With the known forgeries it was a different story. As shown in Fig. 5, the same circle did not touch all the tops of the letters of the mint 'certified forgery', nor did it with the forged double, triple, or inverted surcharges on the used copies (Figs. 6-10). When the circle touched the top of the '2' and the top of the 'T', it missed touching the top of the final 'S' by about 0.5 millimeter. It was impossible to make the circle touch the tops of all the letters as with the genuine surcharges.

With some of the inverted surcharges, however, this test proved nothing. As shown in Fig. 11, the fit was fairly good on this mint Numeral stamp; on two mint copies of the Leaf issue (Figs. 12 and 13) the fit was good to excellent. (Figs. 11 and 12 show the inverted surcharges that were discussed in the previous article.) On the other hand, William Maresch has pointed out that these stamps all have definite characteristics which identify them as forgeries: in Fig. 11 the second stroke of the 'N' is too small, and in Figs. 12 and 13 the strokes of the 'E' are malformed.

CONCLUSIONS

This study has established that chemical analysis of the ink is not a valid means of distinguishing false surcharges from genuine ones. The 'circle test' is a simple way of detecting many of the forged surcharges, but is not of itself capable of establishing the genuineness (or lack of it) of all inverted surcharges. When the circle test fails, however, other characteristics often identify the inverted surcharges as forgeries. *While there is therefore no absolute proof that all inverted surcharges are false, there is equally no proof that any of them are genuine.*

ACKNOWLEDGEMENTS

The writer is indebted to Mr. John Hunt, who made the electron microprobe tests, and to Ed Richardson, William Maresch and Robert Lyman for their review of the manuscript of this article and their many helpful comments. The information on early literature references to the inverted surcharges was supplied by Ed Richardson.

MINT CANADA PRE-WAR

Specializing in
ADMIRALS
and

19th CENTURY COVERS

LESLIE GRAY

2250 CHANCERY LANE
OAKVILLE ONTARIO

L6J 6A3

BNAPS - CSDA - RPSC



BNAPEX '85

WESTIN HOTEL, CALGARY, ALBERTA

SEPTEMBER 11 - 14, 1985

Here are the exhibition rules and entry forms,

plus the official hotel reservation

EXHIBIT RULES - BNAPEX '85

Who May Enter - The Exhibition is restricted to members of BNAPS in good standing.

What May Be Exhibited - The Exhibition is restricted to British North America material, as outlined in the classification.

Entries Are Limited - No exhibitor may show more than one entry in any group or sub-group.

- All entries shall be the bona fide property of the exhibitor.
- The Host Group has the right to restrict the number of frames for any one entry, but in no case will the restriction be less than four frames.
- Entries shall consist of no less than two and no more than ten frames.
- All entries will consist of complete frames of 16 pages per frame.
- No entry, having been awarded the Grand Award at a previous BNAPEX may compete in open competition again. The exhibitor is restricted however only in that group or sub-group where the Grand Award was won.

Type Exhibition - Open Show basis.

Judges - Three experienced judges, all members of BNAPS, have been selected by the Host Group.

No judge may enter the competition.

AWARDS

The classification is for purposes of properly organizing the exhibition, and also for the purpose of restricting the Grand Award winners. **They have no other purpose in determining awards.**

The Exhibition is to be judged on an open-show basis, using modified International Show standards.

The number of awards in total, and by grades, shall be determined only by the quality of the exhibits on display.

In no way should it be interpreted that any given number of awards must be given to any group or combination of groups.

BNAPS EXHIBITION CLASSIFICATION

CLASS I — COURT OF HONOUR

This classification is reserved for exhibits "by invitation only," and includes:
 Postal administrations and museums
 Outstanding private collections

CLASS II — COMPETITIVE GROUP

A—PRE-ADHESIVE AND/OR STAMPLESS COVERS OF CANADA, NEWFOUNDLAND, AND/OR ANY BNA PROVINCE(S).

- B—Covers of Canada, Newfoundland, and/or any BNA Province(s)
- B1—19th Century to (1897)
- B2—20th Century (from 1897)

C—PROVINCES

- C1—British Columbia and Vancouver Island
- C2—New Brunswick, Nova Scotia and Prince Edward Island

D—CANADA (Victorian Issues)

- D1—1851-59, the Pence and Decimal Issues
- D2—1868-92, Large and Small Queen, Widow Weeds and Registration Issues
- D3—1897-02, Diamond Jubilee, Leaf, Numeral and Maps

E—CANADA (Early 20th Century)

- E1—King Edward and Quebec Issues
- E2—Admiral Issues and War Tax
- E3—George V, 1927-35

F—CANADA (Modern Issues)

- F1—George VI
- F2—Elizabeth II, including Semi-Postals
- F3—Officials, Overprinted or Perfin
- F4—Special Delivery, Postage Due, Officially Sealed

G—Airmails

- G1—Newfoundland Airmails and/or Covers
- G2—Canadian Semi-Official Airmails and/or Covers
- G3—Canadian Government Issues and Flights

H—POSTAL SPECIALTIES

- H1—Canadian and Newfoundland Booklets and Panes
- H2—Canadian Coils, Miniature Sheets, Souvenir Cards, Plate Numbers and imprint studies

J—CANCELLATION STUDIES (on or off covers)**K—PRECANCELS, INCLUDING PRECANCELLED POSTAL STATIONERY****L—POSTAL STATIONERY OF CANADA AND NEWFOUNDLAND****M—POSTAL HISTORY SPECIALTIES****N—REVENUES****O—NOT OTHERWISE CLASSIFIED**

NOTE: Proofs and Essays should be entered in the group to which they belong; thus pence and decimal Canadian proofs would be entered under D-D1. However if showing all 19th century proofs then enter merely as II-D.

Freaks, plate varieties, etc., should be entered in accordance with the above instructions.

Specialized collections of single stamps should be entered in the group or sub-group for that particular issue. It is not necessary to exhibit all the material listed in the sub-group.

CLASS III—NOVICE

This special section has been allowed by the Board of Governors with the intent to encourage new exhibitors at the show and is open to any member who has not previously exhibited at a BNAPEX show. This section is non-classified.

GENERAL

Insurance shall be the responsibility of the exhibitor. While the Host Group shall take every reasonable means to provide security for the exhibition there shall be no responsibility or liability attached to the Society, its officers, committees, members, host, for any loss or damages to any exhibit or part of any exhibit for any reason whatsoever.

The exhibitor, by reason of his signature on this application agrees to the acceptance of these rules and regulations.

The Committee recommends that exhibits be personally delivered rather than be sent through the mails.

BNAPEX '85

EXHIBIT ENTRY FORM

Mr. Philip Wolf
Exhibits Chairman, BNAPEX '85
636 Woodbine Blvd. S. W., Calgary, Alta T2W 4W4

I plan to exhibit frames.
Frames accommodate sixteen (16) album pages measuring 8 $\frac{3}{4}$ "x11" (in four horizontal rows of four pages each).

Title of exhibit

Brief Description of exhibit

I will personally deliver my exhibit to the chairman, or

My exhibit will be sent by or delivered by

Please return by Insured for

Amount enclosed for entry fee at \$8.00 per frame \$

Included for return postage \$

Total entry fee plus return postage \$

MAKE CHEQUE OR MONEY ORDER

PAYABLE TO: BNAPEX '85

I, the undersigned, have read the rules for exhibiting and understand that I will be responsible for insuring my exhibit, and I will not hold the exhibition committee, the society, and/or the hotel, their officers, members or employees liable for any loss or damage to this exhibit.

Name (print)

Signature

Address

SEND ENTRY FORMS TO EXHIBITS CHAIRMAN: Entry forms should be received on or before August 1, 1985.

SEND EXHIBITS TO:

EXHIBITS CHAIRMAN, BNAPEX '85

c/o Philip Wolf, Bank of Nova Scotia

10201 - Southport Road S. W., Calgary, Alta T2W 4X9

FOR OFFICE USE; PLEASE LEAVE BLANK

Entry accepted Exhibit received

Mounted by Taken down by

Returned by Received by

Class Group Sub-group



THE WESTIN HOTEL
Calgary

Reservation Request

ROOM HELD UNTIL 6:00 P.M. UNLESS GUARANTEED BY CREDIT CARD OR DEPOSIT RECEIVED.

BRITISH NORTH AMERICA PHILATELIC SOCIETY
Wednesday, September 11th through Saturday, September 14th, 1985

ROOM RATES

PLEASE CHECK OFF CHOICE:

WEEKEND

# OF PERSONS	<input type="checkbox"/> MAIN BUILDING (Single/Double)	\$89.00	<input type="checkbox"/> (Single/Double)	\$55.00
1 <input type="checkbox"/> 2 <input type="checkbox"/> 3 <input type="checkbox"/>	<input type="checkbox"/> PREMIER TOWER (Single/Double)	\$99.00	<input type="checkbox"/> (Single/Double)	\$65.00

NOTE: Third person in room plus \$15.00

* Rates in Canadian Currency

NAME _____ COMPANY _____

ADDRESS _____

CITY _____ PROV./ STATE _____ ZIP/ POSTAL CODE _____

PHONE NO. HOME () _____ BUS. () _____

ARRIVAL DATE _____ TRAVEL BY: (Air, Car, Bus) _____ ARRIVAL TIME _____ A.M. P.M.

DEPARTURE DATE _____ SHARING ROOM WITH _____

CONVENTION DELEGATES PLEASE NOTE:

- Room held until 6:00 p.m. unless guaranteed by credit card or deposit received.
- Space availability cannot be guaranteed if reservation not received by August 15th, 1985.
- Check out time 1:00 p.m.
- Convention rates are specially negotiated for your group but can be guaranteed only if reservations are received before cut off date.
- If you would like confirmation of your reservation sent by mail please check box.

CREDIT CARD INFORMATION: VISA [] MASTER [] AMX [] CARD # _____ EXPIRY DATE _____

Reply to: Post Office Box 1478, Calgary, Alberta T2P 2L6

CONSISTENT MARKS ON DOLLAR JUBILEES

by Howard Twichell

During our annual meeting in Winnipeg, Bill Maresch examined a number of copies of the dollar values of the Diamond Jubilee issue of 1897. He confirmed a consistent mark on each value.

The one dollar has a dot on the ribbon below the ball directly under the V. The two dollar has a dot in the white band under the three of 1837. The three dollar has a dot almost in the same place as the one dollar, except it is lower and more difficult to detect. The four dollar has a dot after the S in dollars. The five dollar is the most subtle — a dot at the upper left side of the white band to the left of the F in five.

Surprisingly, none of these markings appear in die proofs or plate proofs. Is it possible that someone in the post office department was concerned that these values might be counterfeited? After all, these were the highest values ever printed at the time. No reference has been found anywhere in regard to these markings. Any information on this subject would be appreciated.



CANADA - NEWFOUNDLAND

QUARTERLY PUBLIC AUCTIONS OF SPECIALIZED ITEMS



Hundreds of collectors bid in our quarterly public auctions. Our carefully prepared and profusely illustrated catalogues offer a regular source of outstanding material to British North America specialists. Send in \$9.00 today for a subscription to our next four catalogues and prices realized.

CONSIGNMENTS WANTED CANADA, NEWFOUNDLAND AND PROVINCES

We offer a simplified service to make the disposal of your stamps an easy, pleasurable experience. Low commission rates and cash advances are available for better properties. Outright purchase can be arranged if you prefer. We are willing to travel to view larger holdings.

If you are not familiar with our operation, we put out a carefully produced catalogue to secure maximum realizations for your material. We have an international mailing list of active buyers. A copy of the catalogue with prices realized from our previous sale is available free on request to interested consignors.

We are now accepting material for our next auction. Please write or telephone me - Gary Lyon (506-546-6363) today for further details.

EASTERN AUCTIONS LTD.

P.O. BOX 250, BATHURST, N.B. CANADA E2A 3Z2

- Please send complimentary Catalogue
- \$9.00 Enclosed for Subscription Fee
- Please send previous Catalogue and Prices realized as I am interested in selling

Name _____

Address _____

The Study Group CENTERLINE

by Frank Waite

STUDY GROUP COORDINATOR: John T. Burnett, 757 Parkwood St., Sidney, OH 45365

CANADIAN SEMI-OFFICIAL AIRMAILS: H. E. Sanguinetti, 1960 Union St., Apt. 21,
Clearwater, FL 33575

CANADIAN REVENUES: Wilmer C. Rockett, 2030 Overlook Avenue, Willowgrove, PA 19090
R.P.O.'s: W. G. Robinson, 5830 Cartier St., Vancouver, BC V8M 3A7

CANADIAN MILITARY MAIL: Ken Ellison, Oyama, B.C. V0H 1W0

SQUARED CIRCLES: Gary D. Arnold, 5509 East St. Joe Hwy, Grand Ledge, MI 48837

FLAG CANCELS: Larry R. Paige, 1145 Shillelagh Road, Chesapeake, VA 23323

SMALL QUEENS: Don Fraser, 1183 Warsaw Avenue, Winnipeg, Man. R3M 1C5

BNA PERFINs: Joe Purcell, 6 Richardson Drive, Kingston, Ontario K7M 2S6

CENTENNIAL DEFINITIVES: D. Irwin, 2250 Lawrence Ave. E., #406, Scarborough, Ont. M1P 2P9

CANADIAN RE-ENTRIES: Ralph E. Trimble, P.O. Box 532, Stn. A, Scarborough, Ont. M1K 5C3

POSTAL STATIONERY: Robert Lemire, P.O. Box 549, Pinawa, Man. R0E 1L0

MAP STAMP: W. L. Bradley, 122 Sherwood Ave., Kitchener, Ontario N2B 1K1

PROVINCE OF CANADA: Charles Firby, P.O. Box 208, Southfield, MI 48037

DUPLEX CANCELLATIONS OF BNA: Robert A. Lee, Box 937, Vernon, B.C. V1T 6N8

1972-78 'CARICATURE' AND LANDSCAPES DEFINITIVE ISSUE: Dan Moore, Box 29, Aylesford, N.S. B0P 1C0

PRINCE EDWARD ISLAND: James C. Lehr, 2918 Cheshire Rd, Wilmington, DE 19810

NEWFOUNDLAND: C. A. Stillions, 5031 Eskridge Terrace, N.W., Washington, DC 20016

ON THE FRINGES

Many of the study groups were enthusiastic about their meetings in San Francisco. There were, however, complaints about breakfast meetings (a rather early breakfast at that). This, understandably, inhibited attendance. To encourage live and healthy study groups, we cannot inconvenience them; we must provide more suitable meeting times. Concurrent meetings (which I abhor) may be the only answer. I feel for John Burnett and convention organizers.

The newsletters are indicative of the constant activity of the study groups. The Small Queens group had an article, by George Arfken, presenting some corrections to John Hillson's description of the Three Cent Rose Carmine. There was also a continuation of the article on *Small Queen Duplexes* authored, I believe, by John Burnett.

The Map stamp people were treated to data, compiled by Whit Bradley, on the location and identity of the Pacific Islands on the Map stamps — a reflection of a lot of painstaking effort. Map stamp study crosses many disciplines, and the group would like to have checklists of Squared Circles, R.P.O.'s, Duplexes and other cancels that may occur on the Map stamps. The Squared

Circle and R.P.O. study groups have been asked for help. This interchange among study groups is wonderful.

An illustrated article on *Newfoundland — Labrador Military Cancels and Censor Markings (1942-46)* appears in the latest Military group newsletter. Though unsigned, I suspect this is by Editor Ken Ellison. *Canadian Naval Liason Officers at Guantanamo, Cuba* by Wilf Whitehouse, again illustrated, was completely new knowledge to me.

Dan Rosenblatt listed *Sister Towns of Canada and Great Britain* that have used Squared Circle cancellations. Dan is involved in a monumental study of the Squared Circle cancellations of Great Britain — they had about ten times as many as Canada. This newsletter also has a list of Canadian Squared Circle cancellations by rarity factor.

The Revenues feature a new discovery, and a continuation of *Hunting Permit Stamps of Manitoba* by Joachim Hosang, a German member.

The Re-Entry group illustrates a re-entry on the two cent Small Queen, and a new re-entry on the 13¢ Charlottetown Confederation stamp

(Scott #224), courtesy of Ralph Trimble. There is also a continuation of George Arfken's excellent article, *Re-entries of the Half Cent Small Queen*. This is accompanied by wonderfully detailed illustrations.

The Duplex group newsletter lists the N.W.T. duplexes. In addition, there are 37 pages of illustrations and data on other duplexes. Although no credit is given, I suspect that Bob Lee is responsible.

The Centennial Definitives newsletter illustrates numerous partial printing and fold flaws. A new Winnipeg tagging variety found by Bill Schoen is pictured. David Harding has followed up an article by Joe Purcell with a listing of perforation and paper fluorescence combinations he has found on the booklet stamps. Another example of interchange between groups, the Stationery Study Group has supplied a list of earliest recorded dates for Centennial stationery.

The 1972-78 Definitives and Landscapes group have polled their membership on tagging, perforations, paper texture, fluorescence and printing differences. If they get the desired input, they should come up with something definitive.

Barry Shapiro is attempting to form a Legislative Postmark group. The plans and goals proposed are well thought out.

A study group, once it has achieved a primary goal, often stagnates. Every study group should, periodically, re-evaluate its reason for being. It should establish goals and form plans to achieve those goals. Of primary importance are regularly issued newsletters to retain the interest of the membership, but if the content is merely undirected random contributions of members, the study group can degenerate into little more than a social group with common interests. To me, it isn't the number of study groups that is important, but rather how productive they are.



COVERS

AND

STAMPS

Free Price List

CANADA AND
PROVINCES

J. C. MICHAUD

P.O. BOX 5176 - ARMDALE, N.S. B3L 4M7

Satisfaction Guaranteed

AUCTION AGENT

For over twenty-five years, Jim Hennok has been buying at major North American Auctions. His expertise is available to you at a surprisingly low rate. He is widely recognized as the most thorough and accurate "viewer" in Toronto. By employing him as an agent you can gain anonymity and prevent unsatisfactory purchases. Please phone or write to discuss your needs.

JIM A. HENNOK LTD.

185 Queen St. East
Toronto, Ontario
M5A 1S2

Phone (416) 363-7757
(24 hours)

MAIL AUCTIONS EVERY TWO MONTHS

- ★ CANADA AND PROVINCES
- ★ UNITED STATES
- ★ BR. COMMONWEALTH
- ★ FOREIGN
- ★ LARGE LOTS

Subscriptions \$10.00 per year.

Write today for our next sale

VANCE AUCTIONS LTD.

Box 267H - Smithville, Ontario, Canada
L0R 2A0

**CANADIAN POSTAL HISTORY
&
POST CARDS**

GREENWOOD STAMP CO.

TEL. 1-613/257-5453

216 MAILEY DR.

CARLETON PLACE, ONT. K7C 3X9

CALENDAR

CALENDAR lists exhibitions and bourses with significant BNA content, and BNAPS Regional Group functions. Information/prospectus must reach the Editor at least 3 months in advance.

- APRIL 13, HAMILTON, ONT.** — SPRINGPEX, 4th annual spring exhibition and bourse of the Hamilton Philatelic Society. Main Post Office, 10 John St. S. Information: Andrew Chung, P. O. Box 5071, Stn. E, Hamilton, ON L8S 4K9
- APRIL 13 - 14, WINDSOR, ONT.** — Second annual show and bourse of the Essex County Stamp Club. St. Alphonsus Church Hall, City Hall Square (½ block from Tunnel). Information: Box 1503, Stn. A, Windsor, Ont. N9A 6R5.
- APRIL 13 - 14, SUDBURY, ONT.** — NICKELPEX '85, 6th annual stamp show and bourse of the Sudbury Philatelic Society, Civic Square. Information: Dan McInnis, P.O. Box 2063, Stn. A, Sudbury, Ont. P3A 4R8.
- APRIL 20, BARRIE, ONT.** — The Barrie District Stamp Club's 25th anniversary exhibition and bourse. Continental Inn, Highways 400 and 90. Information: Michael Head, 45 Dalton St., Barrie, Ont. L4M 1M5.
- MAY 10-12, WINNIPEG, MANITOBA** — The annual Winnipeg Philatelic Society Spring Exhibition and Bourse. Marlborough Inn. Information: P.O. Box 1425, Winnipeg MB R3C 2Z1.
- MAY 10, TORONTO, ONT.** — BNAPS' Golden Horseshoe Regional Group will be holding its first annual dinner meeting at the Officer's Mess, Fort York Armouries. 7 PM. Reservations: Andrew Chung, P.O. Box 5071, Hamilton, ON L8S 4K9 (Please do not delay.)
- MAY 14-22, TEL AVIV, ISRAEL** — ISRAPHIL '85, FIP sanctioned International Exhibition. Canadian Commissioner: R. K. Malott, 16 Harwick Cres, Nepean, Ont. K2H 6R1.
- MAY 24-26, TORONTO, ONT.** — ROYAL '85, annual exhibition and convention of the Royal Philatelic Society of Canada. Sheraton Centre. Information: ROYAL '85, 10-1300 Kamato Road, Mississauga, Ont. L4W 2N2.
- JUNE 7-9, VANCOUVER, B.C.** — PIPEX '85, the 1985 show of the Northwest Federation of Stamp Clubs. Sheraton Landmark Hotel, Robson St. Information: PIPEX '85, P. O. Box 2356, Vancouver, B.C. V6B 3W5.

BNAPEX '85: SEPTEMBER 12-14, BNAPS' annual convention. Westin Hotel, 4th Ave. at 3rd St. S. W. Information: BNAPEX '85, P.O. Box 1478, Calgary, Alberta, T2P 2L6.

1986

- MAY 22-JUNE 1, CHICAGO, IL** — AMERIPEX '86, FIP sanctioned International Exhibition. Canadian Commissioner: David Dixon, P.O. Box 1082, Oakville, Ont. L6J 5E9.
- AUGUST 28-SEPTEMBER 7, STOCKHOLM, SWEDEN** — STOCKHOLMIA '86, FIP sanctioned International Stamp Exhibition. Stockholm Trade Fair Center. Canadian Commissioner: Peter Mann, 36 Sydenham St., Guelph, Ontario N1H 2W4. American Commissioner: Victor E. Engstrom, 2655 Pebble Beach Dr., Clearwater FL 33519.

AUGUST 28-30, BNAPEX '86 — DEARBORN, MICHIGAN — Chairman: Chuck Firby

1987

JUNE 6-14, TORONTO, ONTARIO — CAPEX '87. FIP sanctioned International Exhibition. Information: Box 204, Postal Station Q, Toronto, Ontario M4T 2M1

BNAPEX '87 — CHARLOTTETOWN, PRINCE EDWARD ISLAND

1988-89

BNAPEX '88 — VIRGINIA BEACH, VIRGINIA

BNAPEX '89 — HAMILTON, ONTARIO

Encourage Friends To Join BNAPS

LITERATURE REVIEWS

BNA Philately in Print

THE CANADIAN PATRIOTIC POST CARD HANDBOOK; W. L. Gutzman; British North America Philatelic Society and Unitrade Press, Toronto, 1985. Soft Cover. 139 pp, \$12.95. (BNAPS member's discount applies if ordered from BNAPS Book Department.)

This is one book which was worth the wait. With every different type of card well-illustrated in full colour, it is truly a feast for the eye. You don't even have to collect patriotic cards to get your money's worth (and the price is a lot lower than you would expect, too).

The cards are catalogued according to publisher and type, with every known view or variation listed in an easy-to-follow manner. Although every effort has been made to make it complete, it is hoped that collectors will check their holdings and supply information of the inevitable new finds. Then we can look forward to an expanded edition. Price ranges are given for each type of card; early comments agree that they are realistic.

Wally Gutzman deserves all the congratulations he should be getting for his labour of love,



and Unitrade has earned lots of praise for a quality production.

D.D.



NEWS

From The BNAPS Library

by Don Makinen



CANCELLATIONS

Members who are interested in cancellations can find lots of material in the BNAPS Library. Here are some examples:

FLAGS

- CL-39—*Canadian Flag Cancellations*, by A. L. McCready, 1945
- CL-39a—*The Canadian Flag Cancellation Handbook*, by E. A. Richardson
- F-313—*Union Jack Style Flag Cancels*, by H. E. Gottshall, 1965

- F-426—*Canada Flag Cancellations*, by F. W. Pollock, 1941
- F-601—*Canada, Fredericton Flag Cancel of 1948*, by E. A. Richardson
- F-612—*The 1953 Coronation Flag Cancel of Canada*, by E. A. Richardson

DUPLEX

- A3-22—*Canadian Duplex Cancellations of the Victorian Era, 1860-1902*, 2nd edition, by E. A. Smythies, 1963

(Continued on page 35)

REGIONAL GROUP RAMBLINGS

by Jim Goben

REGIONAL GROUP COORDINATOR: Dr. Robert V. C. Carr, 117 Robin Hood Way, Youngstown, OH 44511

REGIONAL GROUP REPORTER: Jim Goben, 304 W. Lincoln St., Bloomington, IL 61701

PRAIRIE BEAVERS: E. A. Richardson, P.O. Box 939, League City, TX 77573

CALGARY: Philip Wolf, 636 Woodbine Blvd. S.W., Calgary, Alberta T2W 4W4

NORTHERN CALIFORNIA: Garvin Lohman, 1541 Sacramento St., Apt. 3, San Francisco, CA 94109

MID-ATLANTIC: Leo LaFrance, 406 Glenheath Dr., Hendersonville, NC 28739

GOLDEN HORSESHOE: Andrew Chung, P.O. Box 5071, Stn. E. Hamilton, Ont. L8S 4K9

DETROIT-WINDSOR REGIONAL GROUP: Mike Barie, P.O. Box 1445, Detroit, MI 48231

REGIONAL GROUP ROUNDUP

A good way to spread the word about the joys of being a BNAPS'er is by taking part in local and regional shows. The Golden Horseshoe group has been active in this area. Last September Mike Bednar and Walter Horne organized membership booths at STAMP MARKETPLACE in September, and in October at PHIL-EX.

In January, a membership booth was again established at PHIL-EX. In addition, on January 12, Andrew Chung presented a seminar on the 'Collection of Postage Dues in Canada'. This was followed by a Postal History presentation by member Kimmo Salonen on 'Pioneer Post Offices in York County'.

Another way to support shows is to exhibit. The NORCAL group has done this for some time. At CALPEX '84, the Grand Award was taken by King Parker, a Gold by Austin Mifsud, a Silver by Clell McElroy, and a Bronze by Herb Nishio.

VAPEX '84, held in Virginia Beach, Va on Nov. 9-11, was a BNAPS Mid-Atlantic Group supported show. The Reserve Grand was presented to Larry R. Paige for 'Canadian Flag Cancels'. Larry also won the BNAPS and VPF awards, as well as a Gold. Don Jones won a Gold, the Adm. Jesse G. Johnson award and the AAMS award. Al Cook took a Silver for 'Booklets and Panes of the Admirals'. Another Silver went to Leo LaFrance for 'Stampless Cross-Border Covers'. It was also nice to learn that a personal friend won the Grand award at VAPEX. Though not a BNAPS'er, Dr. Charles Wunsch is a real friend of philately.

Another way to support these shows is to come early and help set up the show, or stay late and help take it down. If possible do both. Your help will be appreciated.

Remember to get your information to me by May 15 for the next column. This column will only work with your support.

News from the BNAPS Library (Continued)

F-100—*Canada — Duplex Cancellations*, by E. A. Smythies, 1957

F-135—*Postmaster's Duplex Postmarks of Canada*, by E. A. Smythies, 1959

F-506—*The Mutilated Duplex Hammer of Port Hood, 1869-70*, by E. A. Smythies, 1971

F-886—*Unofficial Duplex Cancellations, 1868-88*, by E. A. Smythies

tions, by C. B. D. Garrett, 1945

PS-1—*Canadian Postal Slogan Cancellations Catalogue*, by D. Proulx, 1970

F-71—*Canadian Patriotic Slogans*, by A. Harvey, 1943

F-214—*Postmarks with Slogan Cancellations — BNA*, by A. H. Pike, 1922

F-611—*Canada: Early Slogan Cancellations 1912-16*, by E. A. Richardson, 1960

F-615—*Canada's DO IT NOW Slogan Cancellations*, by E. A. Richardson, 1960

SLOGANS

TOP-2/1/2—*Canadian Postal Slogan Cancellations*

Encourage Friends To Join BNAPS

THE VILLAGE OF GRANVILLE

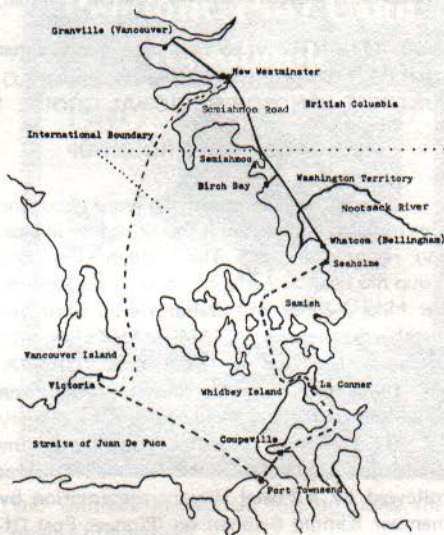
A Brief Postal History, a Missent Cover and the 'Kicking Mule'

by Austin Mifsud

Collecting covers from Granville, British Columbia is a difficult field, and rarely does an item surface that has as many unusual features as the one illustrated. Addressed to Washington Territory, (Washington did not receive statehood till 1889), on the face is a straight line 'MISSENT', and on the reverse a superb transit cancel of Port Townsend's famous 'Kicking Mule'.

Vancouver's first post office, named Granville after the British Colonial Secretary, was established 1 April 1874 by postmaster Henry Harvey. It's name was changed to Vancouver 1 May 1886. Official records show that the revenue for 1874 was \$14.75, increasing to \$148.00 in 1884; it can be seen that covers from Granville are scarce.

Postal service was established in 1877 between New Westminster and Whatcom (Bellingham), via the Semiahmoo Road across the border to Semiahmoo (Blaine) and Birch Bay. Why did this cover deviate from the established 60 mile route (map — solid line) and proceed instead by land and sea to its final destination, a trip in excess of 200 miles (map — broken line)? Was it due to inclement weather — the Delta which the Semiahmoo Road crossed was subject to flooding? (Existing records of the Pacific North West during this era are sparse. To a certain extent reliance must be placed on conjecture and spec-



ulation.) Or did the postal officials simply make a mistake? If so, it was not a grievous one, and in so doing they enriched philately.

The cover went first to New Westminster (backstamp not shown), and was forwarded to Victoria. There a postal official apparently recognized the routing error and applied the straight line 'MISSENT'. Instead of the cover





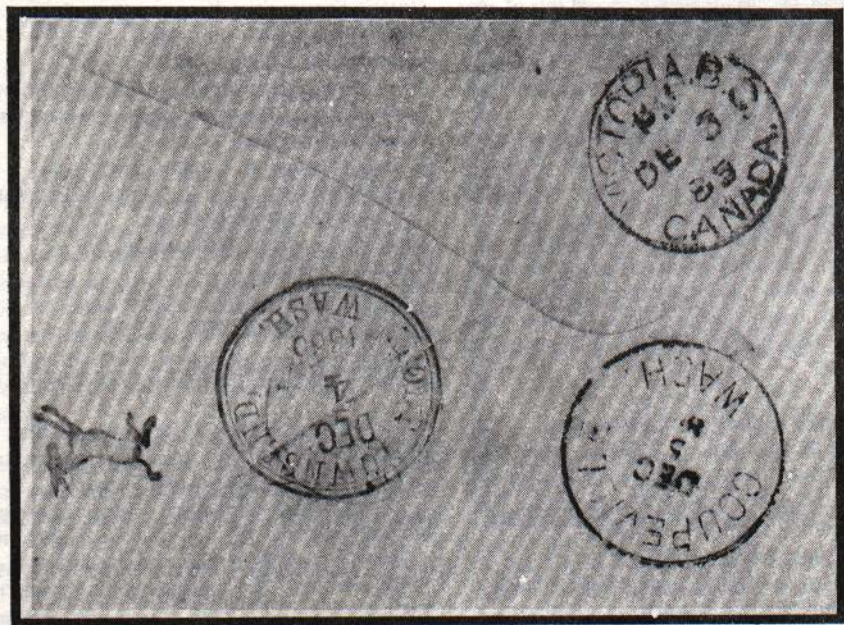
being returned to New Westminster, it was forwarded to Coupeville on Whidbey Island, via Port Townsend. From Coupeville, in all probability, it went to the port of Seaholme on the mainland, and then to Birch Bay via Whatcom.

Port Townsend's famous 'Kicking Mule' cancellation is one of the most sought after by U. S. collectors. Made in San Francisco, it was

used by the postmaster in Port Townsend from 1880 to approximately 1900. It was also used in Forbestown, Susanville, and Goleta, California.

REFERENCES — Bancroft's *History of B.C.*

ACKNOWLEDGEMENTS — Mrs. Ruth Baptie, Vancouver Archives; New Westminster and Bellingham Public Libraries; Mrs. Enid McLeod, Vancouver.



PATRIOTIC POSTCARD SERIES

by W. L. Gutzman (1300)



THE A. TALBOT & Co. SERIES

We have designated this set of cards by the publisher's name, rather than by a description of the design, because there are several sets of very similar design and confusion must be avoided.

A rectangular view, in black and white, is surrounded by a gold frame, with flags at both ends, and topped by a beaver.

The colouring on the address side is in gray and includes the words 'Private Post Card' and the postage rates in a frame. Backs are divided by a double line.

The publisher's name, 'A. Talbot & Co., Publishers, London, Canada', appears on the back.

The earliest recorded date of mailing is June 30, 1905, from Windsor, Ont., but most usage appears to have been from September 1905 until mid-1906.

Alma Ladies' College, St. Thomas, Ont.
Balaclava St. Pub. Sch., St. Thomas, Ont.
Dundas Street, looking East, Woodstock, Ont.
Entrance to Welland Canal, Port Colborne, Ont.
Ferry Landing, Windsor, Canada
General View, Niagara Falls
Grand River and Long Bridge, London, Ont.
Hotel Dieu, Windsor, Canada

Knox Presbyterian Church, Wookstock, Ont.
Main Street, Dunnville, Ont.

Niagara Falls in Winter

Old English Church, St. Thomas, Ont.

Ontario Penitentiary, Kingston, Ontario

Public School, Alvinston, Ont.

Queen's Ave., London, Ont.

River View, Springbank Park, London, Ontario

Rock of Ages, Cave of the Winds, Niagara Falls

Rosedale Wharf, near Lindsay, Ont.

St. Paul's Cathedral, London, Ont.

St. Thomas, Ont. English Church (First Methodist Church blocked out)

Sugar Beet Factory, Wallaceburg, Ont.

The American Falls

The Armouries, London, Canada

Victoria Hospital, London, Canada

HANDS ACROSS THE SEA (VALENTINE)

This beautiful set of cards was 'Printed in Great Britain' for 'The Valentine & Sons Publishing Co. Ltd., Montreal and Toronto'.

The faces of cards are all different in design, but each includes the Canadian Coat-of-Arms, a Canadian symbol or scene, and two forms of transportation. The words 'Hands Across The Sea' appear on each card, as part of the design.



All cards are in multicolour, with blue dominating the backgrounds and a splash of red on each card.

- Map of Canada - Maple Leaf in life-belt - ship and auto (H)
- Two hemispheres - Locomotive in Leaf - ship at bottom (V)
- Loading Hay - Union Jack - ship and locomotive (V)
- Harvesting scene in red heart - ship and locomotive (H)

**COATS OF ARMS IN SHIELD:
B.B. LONDON SERIES 1240**

This series of cards, which appeared from 1909-1912, had many forms of Greetings printed on the lower half of the card. On the upper half, the Canadian or Provincial Coat of Arms appeared on a white, almost triangular, shield. On the whole, the cards have a somewhat blank, austere appearance. However, the coloured area within the Coat of Arms is beautifully done in brilliant colours. The Greetings are printed in gold.

Address sides are divided and show the usual Birn Brothers' ornate design in gray. The space for the stamp is outlined, but blank. The Publisher's name is printed along the left edge, in gray.



- SG1240 The Arms of Canada / Blank / There's Gladness in Remembrance
- SG1240 Blank / Canada / Happy Days and Many

- B1240 Blank / Canada / Many Happy Returns
- G1240 Blank / Saskatchewan / Blank
- G1240 Blank / Saskatchewan / Sent in Friend-

- ship's Name to Greet You
G1240 The Arms of Canada / Brockville / Happy Days and Many
G1240? ? / ? St. Stephen, N.B. / ?
G1240 Blank / Toronto / There's Gladness in Remembrance
G1240 The Arms of Canada / Toronto / Happy Days and Many

G1240 The Arms of British Columbia / Vancouver / There's Gladness in Remembrance

Note: The author would appreciate any suggestions as to the meaning of the prefix B, G, SG etc., to the number 1240. Does it relate to the format of the card, or to a relationship to another publisher?

IN MEMORIAM

WALTER R. HOFFMANN
1905-1984

Walter R. Hoffmann, BNAPS' first President, passed away on 24 September 1984 after a lengthy illness.

On 28 October 1943 Walter Hoffmann was one of fifteen people who met at the Collectors Club in New York City with the common interest of forming a BNA society. There he was elected Temporary President of the newly organized British North America Philatelic Society. In 1945 he was elected as the first official President of the Society.

It was the intention of this group to give service to members through a publication, exchange and sales circuits, and study groups, and to make BNAPS an outstanding organization. After 40 years this is still true.

Walter was born on 2 March 1905 in Lawrence, Massachusetts. The family moved to Riverside, New Jersey, and Walter later relocated to Brooklyn, New York where he worked for Consolidated Edison.

At this time he started collecting stamps and became active in several local stamp clubs. It was through one of these that he met Eleanor. They were married in 1939 and settled in Ozone Park, New York. Since 1971 they have been living in a retirement village in Lakewood, New Jersey. Walter is survived by Eleanor, their two daughters and four grandsons.



Walter never ceased encouraging friends and acquaintances to take up a hobby — preferably stamp collecting. He enjoyed the get-togethers of the old New York City groups, and more recently those of BNAPS' Mid-Atlantic Regional Group. His many friends in BNAPS will miss him.

SUPPORT TOPICS' ADVERTISERS

A HANDSTRUCK 4½ PENCE CURRENCY RATE MARKING

by Donald Welsh



The cover illustrated carries what is believed to be the first reported example of a handstruck 4½ in a circle rate marking. The letter was mailed from Wellington to Picton (both in Prince Edward County) on 31/7/47. The double-circle type Wellington town mark, the 'Paid' mark and the 4½ in a circle are all in red ink, while the

manuscript date in the center of the town mark is in black ink.

It is interesting to note that Boggs listed a similar mark, 11½ in a circle (No. H106), for the same Wellington post office.

Does anyone else have a handstruck 4½ in a circle?

PRICES OF BACK ISSUES

\$2.50 per individual (requested) issue.

\$12.00 per volume of six issues, when available.

\$15.00 per volume of 11 issues, when available.

Bargain price of .50¢ each for random copies of Department choice, with a minimum order of \$10.00. If you wish to re-order another lot, another 20 copies will be mailed with a guarantee of no duplication.

All orders to be prepaid and mailed post paid.

SEND ORDERS TO THE CIRCULATION MANAGER

E.R. Toop, P.O. Box 9026, Ottawa, Ont. Canada K1G 3T8

NEWFOUNDLAND POSTAL STATIONERY AND OTHER STAMPED PAPER

by Robert H. Pratt, OTB

Part Ia - The Newfoundland Postcards

(Installment 3 of a Series)

THE 2¢ REPLY CARD OF 1892 (?)

Mr. S. A. Blackwood of the General Post Office, London, wrote to a Mr. R. G. W. Herbert of the Colonial Office, London on 18 July 1882 about a new venture of the British Postmaster General. This concerned the advisability of introducing into the postal system a post card with a 'Paid' reply card attached. Parliament had passed an act in 1882 entitled 'Post Office (Reply Post Cards) Act 1882', and it was the intention of the Post Office to use these cards between the United Kingdom and those colonies and foreign countries which were members of the Universal Postal Union. Newfoundland was among the list of colonies with a rate of 2¢ (one penny British)

per postcard to UPU members. The reply cards consisted of a double card, folded in the center; one portion was to be used by the original sender, the other was to be torn off and used by the recipient for reply.

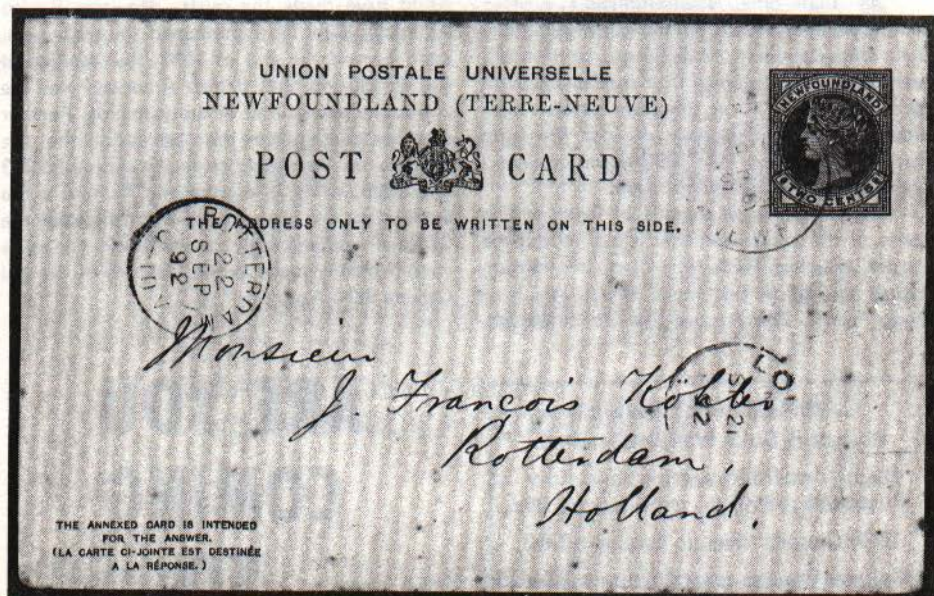
Kimberly of the Colonial Office passed this information to Newfoundland. Evidently this colony was one of those that chose not to reply to the letter. Lord Derby (who replaced Kimberly) wrote again on 30 December 1882 stating that the reply cards would be placed in use in the United Kingdom on 1 January 1883. He also requested that those colonies which had decided not to issue their own cards honor the cards sent to them from England, and pass the reply portions free to the mother country. The two cent



'E' of 'UNIVERSELLE' to right of 'U' of 'NEUVE'

Contractor - British American Bank Note Company (Canada Bank Note Co. - subsidiary)
 Number of Printings - Possibly two
 Quantity - Unknown
 Stamp - Classical design with Queen's head in center surrounded by Newfoundland above and 'Two Cents' below.
 Color - Ruby red on light buff card
 Size - 125 x 83 mm - inscription 30½ mm
 - 125 x 83 mm - inscription 33½ mm

possibly essay)
 Proofs - Essay by De La Rue made for the Crown Agents, a pencil sketch on a printed card.
 Cut down proof of stamp in dark blue, probably color trial.
 Note - See also Canada Post Card 2d - 1896
 Subgroups - 'E' in 'UNIVERSELLE' to the right of 'U' of 'NEUVE'
 - 'E' in 'UNIVERSELLE' to left of 'U' of 'NEUVE'



'E' of 'UNIVERSELLE' to left of 'U' of 'NEUVE'

rate was a reduced rate from that announced by the Treasury on 28 October 1876, which at that time was one penny farthing (2½¢). This rate came at the time postage on letters had been reduced from 6¢ (three pence) to 5¢ (two pence half penny). It is believed that the rate from Newfoundland at that time (1876) was, as later, 2¢.

Various catalogues, and Boggs, state that Newfoundland decided to enter its own series of cards into the international scene in 1892. While no official confirmation of this has been found as yet, the date is not improbable. The same sources also state that the British American Bank Note Company printed the cards. This seems to be a warranted assumption. The cards were lithographed rather than engraved, and much of the material on the cards could be met

with set type. The stamp, however, appears to be more the work of De La Rue or Harrison's than the Canadian Company. It is also presumed that these cards were of a type utilized by other colonies and that they could have been procured through the office of the 'Agents for the Crown Colonies'.

Another observation leads to the belief that there were two printings; the inscription in the lower left corner of the basic address card, which is composed from set type, had two lengths or settings. The one is 30½ mm, and the second 33½ mm, long. Possibly the longer one was an essay for approval only.

Some light is shed on this subject by a letter, from the Colonial Secretary to P. M. G. Frazer, dated 25 September 1891. In it was the information that the Crown Agents had stated that it

was necessary for the colony to issue reply post cards in accord with an enclosed price list and design. Lot 1404 in the Robson Lowe auction of 9 June 1976 purported to be this essay (dated 3 September 1891). The Colonial Secretary desired a report from Frazer as to the desirability of procuring them. Another letter of 4 November 1891, to Frazer, enclosed an approval of a design submitted by Frazer for a paid reply post card. It also authorized Frazer to procure the cards in Canada, from an unknown company, as the price there was cheaper than from England.

At that time Newfoundland's postage stamps were obtained from the British American Bank Note Company, while the regular issue railway bonds were obtained from the Canada Bank Note Company. It is therefore possible that either of these companies provided the reply cards, and a date early in 1892 would be a good probability for a first day of issue.

To continue this pursuit of logic, and to come to the conclusion that it was indeed the British American Bank Note Company that furnished the cards, one must consult Winthrop Boggs' book, *The Postage Stamps of Canada*,

Volume 1. On pages 230 and 300 it is learned that the Canada Bank Note Company acquired the services of veteran engraver W. C. Smillie in the year it was founded, 1882. Further, it succeeded in capturing the contract for the postage stamps of Canada in 1891, much to the chagrin of the British American Company. A table at the bottom of page 230 illustrates the substantial price reduction afforded by the Canada Bank Note Co.

Canada Bank Note produced typographed cards as did British American, so either company could have made the cards. However British American Bank Note purchased the other company toward the end of 1891, thus leading to the conclusion that British American was the contractor and printer of the postcards. Further evidence comes from the observation that the vignette on the Canadian letter cards of 1893 and 1895, while in a hexagonal format, is the same as the one in circular format utilized on the 2¢ Newfoundland reply card of 1892. The cards were probably made at the facilities of the old Canada Bank Note Co.

CANADA REVENUES

Bought & Sold. Wantlists invited

Regular mail bid auctions and fully illustrated pricelists, sample copy 25¢

1984 Canada revenue catalog \$7.50

2 Volume Canada revenue album \$74.95

E. S. J. van Dam Ltd.

P.O. Box 300

Bridgenorth, Ontario, Canada

KOL 1H0

**POSTAL HISTORY
AND OTHER FINE CANADA**
are always featured in my
PUBLIC AUCTIONS

Free copy available on request.

John Sheffield

P.O. Box 3171, Stn. A,

London, Ontario, Canada, N6A 4J4

**ARE YOU
COMING
TO
BNAPEX?**



**CALGARY
SEPTEMBER
12-14**

FOR THE RECORD

POSTAL CODE DELAY MARKINGS

Illustrated are Postal code delay markings which have come to light since the listing in the September-October 1983 TOPICS. Thanks to members Kathy Ward and Brian Peters for forwarding new samples.

MAIL DELAYED DUE TO WRONG POSTAL CODE
COURRIER RETARDÉ EN RAISON DU CODE POSTAL ERRONÉ

DELAYED DUE TO INCORRECT
POSTAL CODE
RETARD ATTRIBUABLE A
L'INEXACTITUDE DU CODE POSTAL

DELAYED DUE TO
IN CORRECT POSTAL CODE
PLEASE ADVISE SENDER
RETARDÉ DUE AU CODE POSTAL INEXACT
VEUILLEZ EN AVISER VOS CORRESPONDANTS

THE POSTAL CODE ON THIS LETTER
IS INCORRECT

NOTIFY YOUR CORRESPONDENTS OF
YOUR CORRECT CODE

MAIL DELAYED
WRONG POSTAL CODE
Please notify your
correspondents

COURRIER RETARDÉ
CODE POSTAL ERRONÉ
Veuillez aviser vos
correspondants

Address added as a TEMPORARY courtesy service only. Please ADVISE your correspondents of your correct address.

L'adresse a été ajoutée à titre de service de faveur TEMPORAIRE seulement. Veuillez INFORMER vos correspondants de votre adresse exacte.

A STUDY OF THE TELEGRAPH COVERS OF CANADA

by Wilmer C. Rockett, OTB and Leo J. LaFrance, OTB

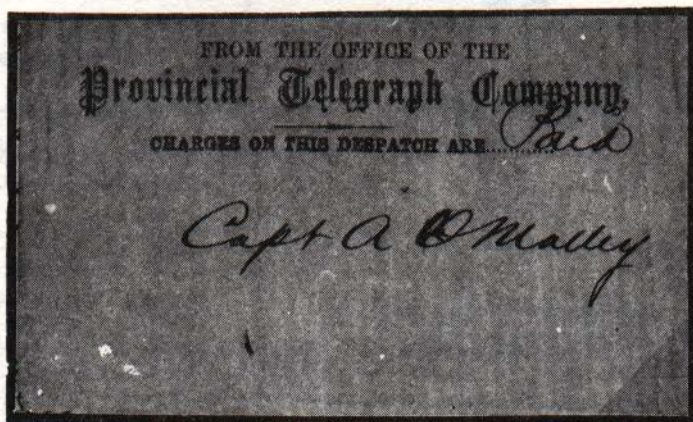


CANADA MUTUAL TELEGRAPH CO.

In 1885 the company was located at 4 Hospital St., Montreal. As late as March 1895 it was at 50 St. Francois-Xavier St., Montreal. Only this brown or tan wove envelope, with printing in black, is known. It is dated 11 Nov-

ember 1882.

At the top is Form 10./CANADA MUTUAL TELEGRAPH CO., below which is a line across the envelope. At lower left is printed: No. .../Charges.



PROVINCIAL TELEGRAPH COMPANY

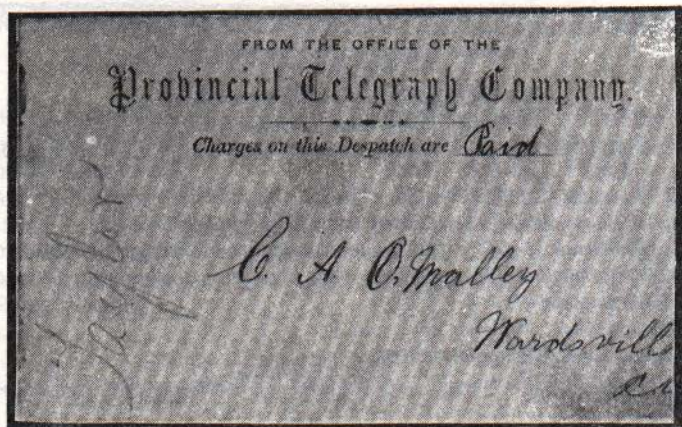
This company was apparently based in London, Ontario. Two covers are known, forming a type and a sub-type. Type I has the first

line type in light serifed letters, the second line in bold Old English letters and the third line in bold serifed letters (9 March 1866). The text is:

FROM THE OFFICE OF THE / Provincial Telegraph Company / (short line) / CHARGES ON THIS DESPATCH ARE

Type 1a (15 October 1866) has the same text, but there are differences in the printing.

The type is not bold, the first line has sans-serif letters, and the last line is in script with only the first letters of 'Charges' and 'Despatch' capitalized.



BNAPS: THE BUSINESS SIDE

BNAPS ELECTED OFFICERS

EXECUTIVE

PRESIDENT	Edward J. Whiting, 25 Kings Circle, Malvern, PA 19355
PAST PRESIDENT	Michael Dicketts, 61 Alwington Ave., Kingston, Ont. K7L 4R4
VICE PRESIDENT	C. Ronald McGuire, National Postal Museum, 180 Wellington St., Ottawa, Ont. K1A 1C6
2nd VICE PRESIDENT	Dr. Robert V. C. Carr, 117 Robin Hood Way, Youngstown, OH 44511
TREASURER	Marva A. Paige, P.O. Box 6688, Chesapeake VA 23323
SECRETARY	Earle L. Covert M.D., P.O. Box 1070, Hay River, NWT X0E 0R0

BOARD OF GOVERNORS

Ten sittings: Five elected in the even numbered years for four years terms

Serving until Dec. 31, 1986		Serving until Dec. 31, 1988	
Allan L. Steinhart (Chairman)		Gary Lyon	
E. A. Harris	John Siverts	David McKain	William Robinson
Robert H. Pratt	Jack Wallace	William Pawluk	Clarence A. Stillions

COMMITTEES AND APPOINTED OFFICERS

MEMBERSHIP: Chairman: Norm Brassler	HISTORIAN: Edward J. Whiting
CONVENTIONS: Chairman: C. Ronald McGuire	BNA TOPICS: See Page 2
HANDBOOKS: Chairman: Allan L. Steinhart	ASST SECRETARY: John Graper
SALES CIRCUIT: Manager: R. H. Jamieson, P.O. Box 2, Sta. A., Islington, Ontario M9A 4X1	
BOOK DEPARTMENT: Manager: Dave Clare, P.O. Box 1082, Oakville, Ontario L6J 5E9	
LIBRARY: Don Makinen, RT. 2, Box 38, Freeport TX 77541	

From the Secretary

EARLE L. COVERT M.D.

P.O. Box 1070
HAY RIVER, NWT
CANADA X0E 0R0

Members are asked to note that two SIGNATURES on an application for membership hastens approval of new applications

REPORT DATE: 1 FEBRUARY 1985

APPLICATIONS FOR MEMBERSHIP

Objections MUST be filed with the Secretary IMMEDIATELY upon publication.

- 4410 JONES, Frederick V., 5321 Haig St., Windsor, ON N8T 1K7
C Canada Mint and Used. Tag Errors. Definitives and Landscapes
Proposed by Daniel J. Moore 4255, seconded by Wilson D. Roushorn 3992
- 4411 CUSWORTH, Martyn Roger, Prospect House, Nearbank, Shelley, Huddersfield, Yorkshire
HD8 8LS England
C Prestamped Mail. Maritime Provinces
Proposed by Richard M. Lamb 1255
- 4412 LORD, Harold G., Provincetown Landing #501, 7925 West Layton Avenue, Littleton, CO
80123
C Plate blocks. FDC's
Proposed by Secretary
- 4413 ROSS, Leroy L., P.O. Box 91, Joplin, MO 64802-0091
C Postal Stationery. Perfins
Proposed by Earle L. Covert L-2698
- 4414 WELLS, Patrick M., 2105 - 32 Ave., Vernon, BC V1T 2K1
D The Stamp Corner
C B.C. Postal History. Canada Mint and Used
Proposed by Kenneth V. Ellison L-1977, seconded by Colin Campbell 2986
- 4415 BARTLETT, William A., 41 Admiral St., Charlottetown, PE C1A 2C5
C PEI Postal History, Cancellations. Canada
Proposed by G. Douglas Murray 2949, seconded by James Lehr 1856
- 4416 BROWN, William T., 230 Lake Ave East, Carleton Place, ON K7C 1J6
C Canada and USA. Perfins and Precancels. Railroad Perfins of the World
Proposed by Secretary
- 4417 KOZLOVIC, Zdenko R., 209 Gordon St., Guelph, ON N1G 1X2
C Newfoundland
Proposed by Mike Street 3848, seconded by D. Odegard 4119
- 4418 REDWOOD, Michael V., 90 Barford Rd., Rexdale, ON M9W 4H9
C Small Queens, R.P.O. and Town Cancels. General Canada
Proposed by Mike Bednar Sr. 3872, seconded by Eugene Labiuk 3299
- 4419 GOTTSCHAL, Paul L., R.R. 1, Box 4, Eureka, IL 61530
C Newfoundland, Canada, USA
Proposed by James R. Goben 2412, seconded by Earle L. Covert L-2698
- 4420 LENNON, Steven J., 168 Rue Des Meurons, Winnipeg, MB R2H 2M5
C Canada Semi-Official Air Mail. Canada and Provincial Revenues, Fiscal History, Tobacco
Stamp and Cheques
Proposed by Beverlie Clark L-3667, seconded by S. A. Clark 2551
- 4421 LOVE, James B., 29 Totteridge Rd., Islington, ON M9A 1Y9
C Coils. Booklets
Proposed by Elmar C. Hodsoll 2190, seconded by John Talman 2884
- 4422 NESSEL, Ingo G., 3000 Dufferin St. #1803, Toronto, ON M6B 3T6
C Newfoundland Mint. Canada General. Q.E. 2
Proposed by Secretary

- 4423 GAIN, Peter Baines, P.O. Box 5307, Johannesburg 2000 South Africa
C Nova Scotia, Early Canada, New Brunswick
Proposed by Dr. Robert V.C. Carr 1427, seconded by Allan Steinhart 2010
- 4424 PENDLETON, Emery J., 87 Elk Ave., Waterbury, CT 06708
C Canada Mint Singles, BNA Revenues, US Classic Singles
Proposed by Secretary

NEW MEMBERS

- | | | | |
|------|------------------------|------|---------------------|
| 4377 | SCHOOLER, Andrew M. | 4385 | MOFFITT, Heather S. |
| 4378 | SCHLESINGER, Robert A. | 4386 | MAJORS, Ronald E. |
| 4379 | ROCHELEAU, Michel | 4387 | GAUDET, Peter J. |
| 4380 | HALLER, Martin | 4388 | MCLEOD, James D. |
| 4381 | PADDOCK, David N. | 4389 | LEDOUX, Andre |
| 4382 | GOLDBERG, Hugh M. | 4390 | STORK, Analeen R. |
| 4383 | HOSANG, Joachim | 4391 | LONGLEY, Bill R. |
| 4384 | WEISE, Edward J. Jr. | 4392 | DRETZKE, Donald A. |

APPLICATIONS FOR MEMBERSHIP PENDING

Applications previously published and awaiting concurrence of the Membership Committee

- | | | | |
|------|--------------------------|------|---------------------|
| 4393 | STEEVES, Carlton E. | 4402 | WHITE, IV, Russell |
| 4394 | ROSS, Rev. Lynn C. | 4403 | LAMONTAGNE, Jacques |
| 4395 | SWERSKY, Ernest D. | 4404 | STONE, Richard E. |
| 4396 | STEWART, John A. | 4405 | MEAKIN, William J. |
| 4397 | HILL, James R. | 4406 | KANE, Howard S. |
| 4398 | CARR, Grace E. | 4407 | RUDYK, Ihor V. |
| 4399 | STEVENSON, Peter Gregory | 4408 | PEYTON, Ernest S. |
| 4400 | STALKER, Brian T. | 4409 | GRIFFIS, Gary |
| 4401 | JEFFERSON, W. Thomas | | |

LIFE MEMBERSHIP

- L-4293 EATON, Daniel F., BC

REINSTATEMENTS

- 2601 MAYO, Leon D., Jr., Box 22338, Kansas City, MO 64113

DROPPED IN ERROR

The following name should not have been included in the dropped for non-payment list printed in the July-August issue. Our apologies for any inconvenience caused.

- 4199 GUPTILL, Phil, AZ

DECEASED

- 2853 JOHNSON, Fred, ON
E-10 HOFFMANN, Walter, NJ

RESIGNATIONS

- | | | | |
|------|-----------------------|------|--------------------------|
| 2869 | ANDERSON, Leon S., CA | 393 | QUARLES, Mervyn, IL |
| 1775 | BEAVER, Paul F., MA | 4042 | TAYLOR, Ronald J., MB |
| 4156 | BAKKER, Mark O., BC | 3137 | BOETTCHER, Ernest R., BC |
| 2218 | ENGLAND, Mark, SK | | |

MAIL RETURNED – UNDELIVERABLE
Please notify Secretary of any changes known

- 4216 PETERSON, James, P.O. Box 202, Station York Toronto 1833, Toronto, ON M5A 1N0
 3938 GOURDIER, Ms. Joan T., 931 Mayfair Cr. Kingston, ON K7M 5S5
 3368 HIGGS, Roger J. E., 263 Pharmacy Ave. Apt. 1014, Scarborough, ON M1E 3E8
 L-1004 MEYERSON, Roslyn C., Latches Lane, Condo 105, Old Lancaster Road, Merion, PA 19066
 3661 DAY, John Edward, 19134 Cherry Creek Rd., Auburn, CA 95603

CHANGES/CORRECTIONS OF ADDRESS

Notice of change MUST BE SENT TO THE SECRETARY – Any other office causes delay

- 2553 HICKEY, Joseph W., 44 Fenchurch Dr., Bella Vista, AR 72714
 2204 HOTT, Gordon E., 4200 Timberlane Drive, Northbrook, IL 60062
 340 KENDLE, James, 3 Devondale Ave., Willowdale, ON M2R 2C9
 2934 MCGRATH, John C., P.O. Box 2038, Kingston, ON K7L 5J8
 2436 MARSHALL, Albert W., 2781 West Shore Dr., Lummi Island, WA 98262
 4337 PERKINS, C.M., c/o Mrs. J. Rogers, Baytree House, 11 Artillery St., Colchester, Essex, England
 L-4293 EATON, Daniel F., 960 Richards St., Vancouver, BC V6B 3C1
 4477 SCHOOLER, Andrew M., 212 N. Selkirk St., Thunder Bay ON P7C 4K2
 3354 WILSON, Dr. J. Don, 11 Elm Place, St. John's, NF A1B 2S4
 3012 WIRTH, Edmund, 1234 Chancellor Drive, Winnipeg MB R3T 4H9
 3337 POLLAK, Gustav, 1236 Los Angeles Ave. Unit F, Simi Valley, CA 93065
 4204 McHUGH, Leslie M., 1266 Balmoral Rd., Victoria, BC V8T 1B3
 4328 OATMAN, David, 315 St. John St., Bathurst, NB E2A 1E8
 4143 WHITCOMBE, Steven P., 1227 N. Harper Ave., Apt. 18, West Hollywood, CA 90046
 2884 TALMAN, John H., Box 70, Adelaide St. P.O., Toronto, ON M5C 2H8
 4070 MCINTOSH, James D., 49 George St., Ottawa, ON K1N 8W5
 4185 YOULL, Rev. Cyril T., 50 Graydon Hall Drive, Apt. 415, Don Mills, ON M3A 3A3
 4300 SURETTE, E.G., 4399 Bath Road, Amherstview, ON K7N 1A1
 685 APFELBAUM, Earl P.L., 2006 Walnut St., Philadelphia, PA 19103

MEMBERSHIP SUMMARY

Total Membership as of 1 December 1984	1439
New Members added 1 February 1985	16
Re-instated	5
Deceased	2
Resigned	7
Total Membership as of 1 February 1985	1451
Applications Pending	17
New Applications	15

ADVERTISING RATES
 Effective 1 January, 1984

	one-time insertion	six consecutive insertions
Outside Back Cover	---	900.00
Inside Covers (front or back)	---	600.00
Full page	90.00	450.00
Half page	60.00	300.00
Quarter page	35.00	175.00
Eighth page	25.00	125.00
Specified pages (when possible)		25% Extra

- Photos and reverses (white on black) - extra, at cost - Tear sheets furnished only on request

CLASSIFIED ADVERTISEMENTS

RATES: 25 words for \$3.00; 10¢ per extra word. Discount of 25% for 4 or more consecutive inserts of the *same* ad. Full payment must accompany ad copy. Copy and cheque or money order, payable to BNAPS, should be sent to the Advertising Manager: Dave Dixon, P.O. Box 1082, Oakville, Ont. Canada L6J 5E9.

Receipt of advertising copy does not constitute acceptance.

FOR SALE

BREAKING UP MINT CANADA collection and stock. Victoria to present. ¾ off Specialized. Send your want list, I'll return quote & condition. Orest Kowal, Box 40, Crooked River, Sask. SOE 0R0.

LOOKING FOR QUALITY ITEMS at reasonable prices? Our 'Special Offers' lists tough to find Canadian material. Write to Jubilee Stamps, Box 103, Kitchener, Ont. N2G 3W5

BOOKLETS — complete and exploded, Panes — mint and used; from the author of the new Standard Catalogue of Canadian Booklets. Also complete, part panes and singles mint, used and on covers. Bill McCann, 170 Dixon Rd., Weston, Ont. M9P 2L8.

USED CANADA, Nfld., G.B., U.S., U.N., Aust., British Colonies, want lists filled. George McGowan, P.O. Box 89, Kinderhook, N.Y. 12106.

MORE THAN FIFTY THOUSAND early postcards in stock including town views, railway depots, post offices, patriotic, ships, military, on approval against your wantlist. Neil Hayne, Box 220, Bath, Ontario, K0H 1G0.

ACCURATELY GRADED Canadian & Newfoundland singles available on approval. Many extras, including personal approach and free postage. Write to Bob Ingraham, Box 911, Prince George, B.C. V2L 4T7.

CANADIAN PRECANCELS. Getting Scarcer! 50 different \$5.00. Hundred \$12.50. Mission mix plus. \$12.50 pound. Postcard-cover auction list free. Keltic, Box 159, McAdam N.B. E0H 1K0.

FOR SALE: Squared circle collection on small Queen issues only, covers & stamps. Includes Pontypool, Waterdown, Millbrook cover, etc. Detailed list on request. **WANTED:** Squared circle cancels on jubilee, maple & numeral issues. Please write with details. Roger Grigson, 75 Clarence Road, Windsor, Berks, Eri.gland SL4 5AR.

CANADIAN SEMI-OFFICIAL AirMail stamps and covers; government issues C1 to C9, singles, plates, First Day Covers, First Flight Covers. Newfoundland Air Mail stamps and Covers. Ray Simrak, P.O. Box 56, Maidstone, Ont. NOR 1K0.

WANTED

CLINTON CREEK, YUKON (anything). Also need advertising covers or cards with illustrated mappings of any Canadian location. Mary Miller, Box 160, Kamloops, B.C. V2C 5K6.

1935-42 COVERS with Dated Dies or Mufti Issue. Will buy/trade. Please write first or photocopy. Gary Steele, 137 Taranaki Dr., Dartmouth, N.S. B2W 4X3.

STAMP DONATIONS for 'Stamp Whiz Kids' junior collectors of St. Francis Xavier School. Send c/o Kathy Ward, 11 Rose Crescent, Stoney Creek, Ontario, L8G 3W6.

CANADA POST P.S. 14's and illustrated announcements (new issue release posters) bought, sold, traded. 1935—current. D. G. Jones, Box 2817, Edson, Alta. T0E 0P0.

INTERNMENT/P.O.W. covers and cards from camps in Canada. Clear camp and censor markings. Send photocopies (will reimburse cost) and asking price to Steven Luciuk, 1542 East Heights, SASKATOON, Sask., S7J 3B5.

ESSAY PROOF JOURNAL (loose/bound/issues); Sissons catalogues sales 1-165 (with p.r.); Maresch auctions #1, 3-11, 13-29, 34, 53-54 (with p.r.); Popular Stamps volumes 1-5; Canadian Philatelist volumes 1-4, 6#8, 7#6. Send list of items and price wanted. Paul Burega, Box 15765 Stn. F., Ottawa, Ont., K2C 3S7.

ANCASTER CANCELLATIONS on cover/card. Need split rings, corks, special markings and sub-offices. Will buy/trade. Mike Street, Box 7230, Ancaster, Ont. L9G 3N6

WANTED

PRE-1900 COVERS from the following Ontario towns. Will pay any reasonable asking price. Scarborough, Highland Creek, Dunbarton, Courtice, Welcome, Wicklow, Smithfield, Bayside, Deseronto, Mill Creek, Cataraqui. Bob Parsons, 4 Freeman Rd., Markham, Ontario, L3P 4G1.

CANADA AND NEWFOUNDLAND POSTAL GUIDES — all periods. Highest prices paid. Dave Dixon, P.O. Box 1082, Oakville, Ont. L6J 5E9.

1946-53 COVERS WITH PEACE ISSUE stamps (268-73, C9, E11, CE 3-4), particularly overseas use. Will buy/trade. Mike Street, Box 7230, Ancaster, Ont. L9G 3N6

SECRETARY, MILITIA COUNCIL return address covers with or without enclosure. Official stationery with OHMS perfin, and private perfin covers. Send photocopy with price wanted. Jon Johnson, Box 6118, Stn. D, Calgary, AB. T2P 2C7.

MONTREAL NUMERAL and letter duplex cancellations on Cover & card on the Admiral Issue. R. Bayes, Box 86456, N. Vancouver, B.C. V7L 4L1.

MUDDY SASKATCHEWAN — Send Keith your Alberta but save your SASK. Territorial material, 1905 and earlier, for Jeffrey Switt, 3962 Belford, Fort Worth, TX 76103 USA

SUNNY ALBERTA — Alberta town cancels on cover, card or stamp. Territorial period forward. Also Edmonton material and small town views. Postage paid. Keith R. Spencer, Dept. of Sociology, University of Alberta, Edmonton, Alberta T6G 2H4.

POSTAL HISTORY COVERS with 1897 Diamond Jubilee stamps—overseas destinations—combinations with other stamps—Jubilee Post Cards with overseas destinations. Howard Twichell, 7334 Whispering Pines, Dallas, Texas 75248.

FORMING A 3¢ JUBILEE, Squared-Circle collection. Please send listing of your duplicates; will buy or trade. A. A. Shaman, P. O. Box 103, Kitchener, Ontario N2G 3W9.

KAMLOOPS AND GLACIER, B.C. Covers and viewcards wanted, all periods. Also CPR related material of Kamloops and Glacier. Jim Miller, Box 160, Kamloops, B.C. V2C 5K6.

WANTED

PRE-JUBILEE POST CARDS WANTED. Need destinations, cancels, varieties. Cash purchase or trade for my Victorian material. Jeffrey Switt, 3962 Belford, Fort Worth, TX 76103.

TRADE

WILL TRADE early used Canada for used Canadian Provinces. Write William Cattermole, 334 McEwen Drive, Kingston, Ontario K7M 3W1. Life member BNAPS, RPSC and APS.

AUCTIONS

PUBLIC AUCTIONS

Singles - Sets - Postal History
Collections - Wholesale Lots
World Wide but Featuring CANADA
JIM A. HENNOK LTD. Est. 1952
185 Queen St. East - Toronto
Canada M5C 1S2 - (416) 363-7757

**DO YOU COLLECT
POSTAL HISTORY?**

If so, why not drop us a line
with your needs?

This Month's Feature
EDWARD
COVERS

D&D COVERS INC.
Dept. B
P.O. Box 1082
Oakville, Ont. Canada
L6J 5E9

We are always in the market
to purchase quality covers

1924 — 1985

FOR OVER SIXTY YEARS THE NAME

MARESCH

HAS BEEN KNOWN FOR

QUALITY AND INTEGRITY

THERE IS ALWAYS A PUBLIC AUCTION WITH STRENGTH IN CANADA AND PROVINCES, EITHER IN PREPARATION OR TAKING PLACE SOON. WE WOULD BE DELIGHTED TO SEND YOU A SAMPLE CATALOGUE, OR DISCUSS SELLING YOUR TREASURES IN ONE OF OUR SALES.

r. maresch & son

330 BAY ST., STE. 703 • TORONTO, CANADA M5H 2S8 • (416) 363-7777

**DEALERS IN
RARE STAMPS
SINCE 1924**

STILL THE ONE!



from private John Emelio Suricolas Windsor

To Robert Crockett Esq

Box 514

Hamilton O.

CW

*From
Pamela*



For Better B.N.A.

J.N. SISSONS INC.

Suite 103 (Mezz.) The Sheraton Centre

100 Richmond St. W., Toronto

Canada M5H 3K6

Telephone: (416) 364-6003

