



Two Panes of 50 of the popular "Bluenose" from Hubert Lethaby Collection
(See page 36)



FEBRUARY, 1956

B·N·A TOPICS

VOLUME 13 • NUMBER 2 • WHOLE NUMBER 132

BRITISH EMPIRE \$392
GERMANY, Cols. & Occ. Issues \$1946
GREAT BRITIAN 1839-1954 \$700
 1840-70 \$1070
MEXICAN "SPLITS" \$1246
NATAL Embossed \$1070
 1854-1908 \$420
NEW SOUTH WALES \$2100
 Used in Queensland \$3850
SARAWAK \$826
 and others

FOR SALE BY PRIVATE TREATY
THROUGH

ROBSON LOWE LTD.
50 PALL MALL, LONDON, S.W.1

Cables: "Stamps, London"

Our agent in Canada is: R. W. Lyman, Box 27, Station D, Toronto,
Ontario.

*When replying to this advertisement please mention that you saw it in
BNA Topics.*

If You Cannot Wait Ten Months

for the Alfred H. Caspary Sale of British North America . . .

MAY WE SUGGEST you write us for catalogues of our regular auctions held every two weeks, many of which contain some exceptional B.N.A. material.

Recognized as the most accurately described catalogues produced, they are gratis and post-free.

H. R. HARMER, Inc.

The World's Leading Stamp Auctioneers

6 WEST 48th STREET, NEW YORK 36, N.Y.

AN OUTSTANDING FIVE-VOLUME COLLECTION

of the

1912 Admiral King George V Issue of Canada

This all-mint collection of the 1912 issue only, contains a tremendous range of imprint and plate number strips and blocks, all types of lathe work, shades, papers and varieties. The quality throughout is very fine plus.

There is one volume of War Tax which is literally complete. All types, plate numbers, engine turnings, shades, etc. Quality, again, magnificent.

Enquiries and want lists solicited.

STANLEY STAMP COMPANY, LTD.

877 Hornby Street

Vancouver 1, B.C.

Canada

JULIARD BUYS STAMPS

for his

- a) MAIL SALES
- b) APPROVALS
- c) JULIARD'S CLASSICS

Write today:

JULIARD, NARBERTH, Pa., U.S.

1956 B.N.A. CATALOGUE

We take pride in offering all collectors of B.N.A. stamps our brand-new edition at 25c (refundable).

This is the most complete B.N.A. list being published in Canada today. Many say it's the best by far.

FOR B.N.A. — Remember . . .

PARAMOUNT STAMPS

Box 55, Station D,

TORONTO9

CANADA

FOR SALE

WHAT TREASURES will you find? Big cloth bag contains over 1000 genuine stamps from 30 foreign countries. Mostly still on paper, unsorted, just as received from foreign natives and missionaries. Only \$1.00 postpaid. Money-back guarantee. Harris, 1896 Transit, Boston 17. (132 2t)

Geo. E. Foster

PHILATELIC PRINTER

Box 174 Bordentown, N.J.

Personal Stationery a Specialty

CANADA

MINT PLATE BLOCKS

I carry an extensive range of position blocks, also matched sets from 1935 to date. Want-lists filled on approval, against deposit or references.

LATEST PRICE LISTS only 10c

I also want to BUY Canadian Plate Blocks, Scott Nos. 211 to 274; also scarcer positions of later issues. What can you offer?

DEALERS — You, too, will be pleased with my buying policy. Root out your oddments and let me make a cash offer for them.

F. G. ATKINSON

1215 GREENE AVENUE
MONTREAL 61, CANADA

Easter Seals

**COLORFUL AND DISTINCTIVE
CANADIAN DESIGNS**

An attractive addition to any collection.

Sheet of 1956 Perf. Seals—Eng. only
OR French and English, each **\$1.00**
(Includes alternate language block)

Complete Set—All years Perf.

Blocks **\$1.00**

(Includes 1956 alternate language block)

Progressive Color Proofs, Blocks.

Each year 25c. All years **\$2.00**

Sheets of Any Year—Perf. \$1.00

Blocks, each **15c**

BERT L. BAULCH

**CANADIAN COUNCIL FOR
CRIPPLED CHILDREN AND ADULTS**

46 Carlton St.

TORONTO 2

CANADA

British North America Philatelic Society

President
CHARLES P. deVOLPI
4720 Grosvenor Ave., Montreal 6, P.Q.

Vice-President
GEO. B. LLEWELLYN
315 Maple Ave., Somerton
Philadelphia 16, Pa.

Secretary
JACK LEVINE
2000 Hopedale Ave., Charlotte 7, N.C.

Treasurer
WILLIAM C. PETERMAN
P.O. Box 348, Caldwell, N.J.

Board of Governors
(1954-57) V. G. Greene, R. P. Hedley,
Dr. A. Whitehead; (1955-58) James
T. Culhane, Harry W. Lussey, Lloyd
W. Sharpe; (1956-59) D. A. Copp,
H. A. MacMaster, D. C. Meyerson.

Librarian
ROBERT J. DUNCAN
P.O. Box 118, Armstrong, B.C.

Sales Manager
ALEX HYDE
337 Stagg St., Brooklyn 6, N.Y.

Publicity Director
A. H. KESSLER
7934 Pickering St.
Philadelphia 19, Pa.

REGIONAL GROUPS

NEW YORK—Meets the third Tuesday of each month at the Collectors Club, 22 East 35th St., New York City.

PHILADELPHIA—Meets the first Thursday of each month at 7934 Pickering St., Philadelphia, Pa.

TWIN CITY—Meets the second Tuesday of each month at the Curtis Hotel, Minneapolis, Minn.

NIAGARA—Meets the second Wednesday of each month at 651 Kenmore Ave., Kenmore 23, N.Y.

VANCOUVER—Meets the fourth Monday of each month at 2091 West Broadway, Vancouver, B.C.

WINNIPEG—Meets on a Monday in each month to be decided upon at the previous meeting. Harold Wilding, 135 Traill Ave., Winnipeg 12, Man.

EDMONTON—Meets on the third Friday of each month at members' homes. R. M. Williams, Sec., 12224-125 St., Edmonton, Alberta.

STUDY GROUPS

PRINCE EDWARD ISLAND—Chairman, Leslie G. Tomlinson; Secretary, Mervyn V. Quarles, 1438 Ridge Road, Homewood, Ill.

SMALL QUEENS—Chairman, Walter P. Carter, 47 Risebrough Ave., Willowdale, Ontario.

CANADIAN PLATE BLOCKS—Secretary, Arch. Millar, Box 920, New Westminster, B.C.

CANADIAN VARIETIES—Secretary, R. M. Bryan, 3484 West 26th St., Vancouver, B.C.

PERFINS—Chairman, Dr. C. M. Jephcott; Secretary, R. J. Woolley, 359 Ellis Park Road, Toronto 3, Ont.

CANADIAN REVENUES—Chairman, Wilmer C. Rockett; Secretary, Prof. R. deL. French, 7481 Upper Lachine Road, Montreal 28, Quebec.

BNA Topics

Official Journal of the
British North America Philatelic Society

VOLUME 13

NUMBER 2

WHOLE NUMBER 132

CONTENTS . . . for FEBRUARY 1956

Articles

ADMIRAL 3 CENT BROWN: PLATE No. 23	29
By Hans Reiche	
DISTINGUISHING THE DIES OF THE 1c AND 2c MAPLE LEAF ISSUE, 1930-31	33
By Alfred Diamond	
STREET CANCELLATIONS OF CANADA	41
By C. F. Waite	

Regular Features

TRAIL OF THE CARIBOU	31
BRINGING NEWS ABOUT PEOPLE AND STAMPS	32
PAGES FROM A B.N.A. SCRAPBOOK	35
THE EDITOR'S MAILBAG	36
PERFIN STUDY GROUP	39
CANADIAN ILLUSTRATED COVERS (No. 13)	40
SKETCHES OF BNAPSers (W. J. Scott)	44
PENCE TALK	45
OFFICIAL SECTION	46

EDITOR

GORDON P. LEWIS, 37 ELDOMAR AVE., BRAMPTON, ONT.

ASSOCIATE EDITORS

Jack Levine, R. J. Duncan, V. G. Greene, D. C. Meyerson, G. E. Foster, Rev. John S. Bain, R. J. Woolley, Prof. R. deL. French

EDITORIAL COMMITTEE

V. G. Greene, Chairman; Dr. C. M. Jephcott, Fred Jarrett, J. N. Sissons, Charles P. deVolpi, D. C. Meyerson

ADVERTISING MANAGER

GEO. B. LLEWELLYN, 315 Maple Ave., Somerton,
Philadelphia 16, Pa.

Published at Brampton, Ontario, Canada, by the British North America Philatelic Society. Subscription: \$3.00 per year; free to members; single copies, 30 cents; back numbers, when available, 30 cents. Opinions expressed in the various articles in this magazine are those of the writers, and are not necessarily endorsed by the Society.

Authorized as second class mail, Post Office Department, Ottawa

Advertising copy must be received by the Advertising Manager by the 10th of the month preceding publication. Editorial copy must be received by the Editor by the 15th of the month previous.

DISPLAY ADVERTISING RATES
ON APPLICATION

PLAN TO ATTEND THE . . .

BNAPS 1956 CONVENTION

At the KING EDWARD HOTEL, TORONTO

SEPTEMBER 27-29, 1956

Make your hotel reservations NOW — direct with the hotel.

A limited number of BOURSE TABLES available at \$25.00 each.
Send cheques (payable at par in Toronto) to the Treasurer:

C. H. FEE,
3247 Lawrence Ave. East,
West Hill, Ontario.

Another "Must" in B.N.A. Literature:

"CANADIAN STAMPS WITH PERFORATED INITIALS"

PREPARED BY THE BNAPS PERFIN STUDY GROUP

This is a reprint, in a 32-page booklet, of the material which appeared under the heading of "The Perfin Group Handbook" in BNA TOPICS earlier this year. However, it has been brought up to date to the time of going to press, with additional listings and illustrations, and should prove an invaluable aid for collectors interested in this popular B.N.A. field. It should be in every collector's library, as this information is not available from any other source.
32 pages and cover. Fully illustrated.

(Postpaid) **\$1.00**

Also available:

"THE SQUARED CIRCLE POSTMARKS OF CANADA"

BY DR. ALFRED WHITEHEAD

This booklet, which was published in December last, has aroused world-wide interest in the squared circle postmarks of Canada. It lists all post offices using this postmark, description of the towns, names of postmasters of that period, populations, earliest and latest use of the postmark, sub-types, and other pertinent details.

48 pages and cover. Fully illustrated.

(Postpaid) **\$1.50**

Available from leading dealers or from:

GORDON P. LEWIS
37 ELDOMAR AVENUE, BRAMPTON, ONTARIO, CANADA



HANS REICHE (BNAPS 783)

Admiral 3c Brown

Plate No. 23



FOR SOME YEARS, students of the Admiral issue have been trying to solve the problem of the 3 cents brown, plate No. 23. This plate, as stated in Marler's book, has been identified with the retouched plate. The heavy retouch of the left upper and lower spandrel lines, including the left box and lower junction lines on the left side, has been found on many stamps, used and mint, including very few multiples.

The rather crude retouch, which obviously has been done on the plate on individual subjects, differed from subject to subject slightly in the large number of specimens found, and an attempt to plate this stamp was made, using the available multiple

pieces as a basis. The numerous straight-edged copies served as a further guide.

Soon, however, it was evident that the number of different copies, as far as could be determined, totalled more than 400, making it impossible for them to have come from one sheet and from only one plate. The color variations did indicate that either the stamps came from various plates, or due to the progressive wear of the plate the stamp appeared first in a darker brown and later on in a lighter brown, simply by showing more white areas. Another item of interest was found in that the length of retouch could often hardly be determined and stamps with identical characteristics,

such as engraver slips, dots, etc., did show varying retouches. These variations as pointed out, did show up in the length of the retouched spandrel lines or the line below the left crown.

In a block of six, used, with straight edges on the right side (later on identified as coming from the LL sheet, No. 88, 89, 90, 98, 99, 100) the bottom right stamp shows a pronounced re-entry in the left numeral box. This led to the belief that at one stage or another a re-entry and a retouch was attempted.

The questions which had to be answered were these, then: Did all the copies come from only plate No. 23 or were other plates around the same period retouched? If only one plate was used, how can the great quantity of copies be accounted for? Was the plate (or plates) retouched after it had been used to print stamps (from an unretouched plate) and was a retouch made necessary through wear?

Was an attempt made to re-enter some worn subjects first before a large retouch was undertaken? How many subjects on one or other plates have been retouched? Was it possible to replate this stamp?

After two years of study, a hunt for material which was collected and loaned by students all over the world, correspondence and help by the post office department, the final answer can now be given. The material studied contained large multiples, plate blocks, over 500 single copies, proofs, and much other valuable stock. The results are as follows:

Plate No. 23 was laid down and approved around the middle or end of November, 1918. This is confirmed by the earliest found copy dated December 31, 1918. Approximately 45,000 impressions were taken from this plate, making a total of 18,000,000 stamps from plate No. 23. After the plate had been laid down, the final examination of the plate, before printing, revealed that the majority of subjects looked heavily worn, especially on the left side of the design. To start printing from this plate would no doubt have eliminated it at a very early stage. Thus, it was apparently decided to try to re-enter some of the worn subjects before printing, and this was done on some subjects. One point of evidence is the strong re-entry found on No. 100 LL. There are other but extremely minor re-entries.

After this start at correcting the plate it was apparently found impractical to re-enter the entire plate. On the other hand, due to the shortage of steel at the time, the plate

had to be saved somehow. Therefore, the re-entering was stopped and the plate was retouched. From examinations of material it can now be stated with confidence that the entire UL and LL sheet was retouched and that retouches on the two remaining sheets, UR and LR, were carried out on the first three vertical rows only. That is, all stamps from the UR and LR sheet, vertical rows 4 to 10 inclusive, have not been retouched. This means that 6,300,000 stamps were not retouched of the entire run of plate 23, and this still leaves about 11,700,000 which were printed with the retouch. All subjects which were retouched before the printing, and this is evident from early dated copies and darker color, show the entire UL and LL spandrel lines, the U and L junction line and the left box was retouched. Copies found with retouches which did not cover the entire left side came from later printings of the plate and did show additional wear. Thus it will be almost impossible to ever plate this stamp, as identical copies from the same position may show differences due to printing wear.

A search was made to establish if other plates around this period were also re-entered, but no clue could be found at all, and it is certain that no other plate was retouched to that extent. There may be a few individual subjects on plates around No. 23 which received a retouch but so far no stamps could be found which could be classified as coming from another plate. ★

Calgary Engraver Retires

• **Canadian first day cover** collectors will be sorry to learn of the retirement of Mr. Herbert Earle, designer and producer of steel engraved Canadian first day covers for the past number of years.

Bert Earle has left his mark on this particular phase of Canadian philately. Being an artist in his own right, a member of the Alberta Society of Artists, he brought to his engravings that sensitivity and sureness of touch that only an artist can give to steel engravings. Mr. Earle learned his trade at Waterton & Sons in London, England, at the turn of the century, and vividly recalls working on the engravings for Chinese stamps of that period.

His last cover for the Boy Scouts Jamboree had a beautiful engraving of Lord Baden-Powell. His engravings can be identified by the initials U.E.L. which stands for Universal Engravers Limited, and in some instances, H.E., his own initials. ★

Trail of the Caribou

By DAN MEYERSON (BNAPS L3)



DR. ALLAN A. WILKINSON (BNAPS 395) of Old Perlican, Newfoundland, has submitted a very nice pre-stamp item for our examination. It is a letter sheet dated Oct. 23, 1830, that was carried across Conception Bay by one of the packets in operation at that time. The interesting thing about this letter sheet that sets it apart from most others is the fact that it has a manuscript rate marking. Since the rate at that time was 1/-, the marking reads "Postage 1/-". Other than a letter sheet in our own collection dated Feb. 6, 1830, this is the only other rated letter sheet we have seen prior to 1848. The one in our collection bears the manuscript marking "Postage 2/-". The reason for the difference in rates is that our letter sheet was transported across Conception Bay by small boat or by carrier around the Bay due to the ice conditions that kept the larger packets in port.

Marshall Kay (BNAPS 760) of Leonia, N.J., is in with a note concerning a bit we had in the January 1955 issue of TOPICS wherein we discussed the scarcity of various postal stationery items, amongst them the 1 cent 1880 card overprinted TWO CENTS (Bond No. NCE1). Marshall's card is posted in St. John's on Mar. 2, 1896, addressed to Germany, and bears the statement "Only 700 of these cards were issued". The card is signed by G. A. Payn, Stamp Clerk. I guess that makes it quite definite as to the number issued. Thanks for the information.

Herman Herst (BNAPS 165) of Shrub Oak, N.Y., a dealer, has submitted an item for our examination which may well be unique. It is in the revenue classification and might more properly be the concern of the Revenue Group. However, since it is Newfoundland, we will take a hand in describing it. There are 23 revenue stamps on this piece, but what stamps—the total face value

being \$1,283.10! They are on piece and there is no indication as to the purpose they served. There are 12 single copies of the \$100 King Edward VII (Sissons No. N15); one copy of the \$50 (Sissons No. N14); one copy of the 10c King George V (Sissons No. N17); four copies of the 25c (Sissons No. N18); two copies of the \$1, with imprint (Sissons No. N20); two copies of the \$5 (Sissons No. N21), and one copy of the \$20 (Sissons No. N22). As any reader can see, with this piece in his possession, he would certainly be in a fair way to speedily complete his collection of Edward VII and George V revenues. Thanks very much, Herman, for having sent this piece down—it certainly is an eye-opener.

Mr. Cecil Fletcher, of Oregon, was referred to me by Nelson Bond (BNAPS L84), of Roanoke, Va., and the author of that outstanding book on the Postal Stationery of Canada and Newfoundland. Mr. Fletcher sent along two items that have not as yet been recorded. In fact, we are not even sure as to what they are, but we believe that we can make a pretty good guess. The items are two cards on what seems to be regular post-card stock, 140mm. x 93mm. The subject on the two cards is exactly the same as the 1880 2c Queen Victoria (Bond No. NCC1) only one is in green and the second seems to be a badly oxidized vermilion. It is our considered opinion that these two cards are color trial proofs of the issued card and that the vermilion color was chosen instead of the green to avoid conflict with the 1c card issued six months later in green. Another possibility is the fact that the U.P.U. regulations may have dictated the use of the vermilion color as Newfoundland entered the Union in 1879. In any event they are certainly novel and interesting and lend a spice to postal stationery collecting.

CONTINUED ON NEXT PAGE

Bringing News About People and Stamps

By REV. JOHN S. BAIN (BNAPS 19)

THE issuance of the new 5 cent hockey commemorative stamp should remind collectors that not all suggestions to the post office are turned down. After very ardent support by the late Lionel Conacher, M.P., himself one of the great hockey immortals, the stamp seemed to have been set aside. Many believed that it would never be issued. At the time I believe that thinking was correct. However, with changing policy in the post office the suggestion that had already been imprinted by many requests, found ready acceptance and is now a reality. The old staid and rigid policies are giving way to the new, and the 5 cent hockey stamp will be one that will add much to the lustre of Canadian philately.

BNAPS

Now for a philatelic prognostication! I believe that in the future we can expect a new stamp honoring the late Jack Miner and his world famous bird sanctuary. This was a man who did much to preserve Canadian wild life. His banding the geese with Scripture verses is a story that has gone around the world. "Uncle" Jack, as he was affectionately known in the community, was always ready to receive guests as they journeyed to near Kingsville, Ontario, to see this almost legendary figure and the work he was doing. It has been my privilege on different occasions to stand with him (I was a pastor in a neighboring town) in the blind and watch the thousands of Canadian "honkers" feeding on their journey of migration. This is truly a Canadian subject worthy of philatelic recognition.

BNAPS

While looking through an auction catalogue recently, I noted the offering of the Canada 1897 Jubilees on cover. This included all values with the exception of one of the lower denominations. This brought back memories of a philatelic chase back in good old Toronto some 14 years ago, when covers (I believe three or four) were offered with the 1897 Jubilees cancelled on the first day! I have often wondered what became of them, and who owns them today—perhaps some BNAPSer reading this column!

BNAPS

Keep your eyes open for copies of early Canada Official Postal Guides. Many num-

bers are scarce. Quarterly copies of 1875 are especially good. A check of the Canada Post Office revealed that they did not possess a complete set. While chances are remote of finding this material, a knowledge of material and a keen eye can prevent destruction when it shows up.

BNAPS

Many thanks again for all the nice cards at Christmas. The outstanding philatelic card I received in 1955 was that of the Stanley Stamp Co. Ltd., Vancouver. This card, printed in red and green, had attached to the front with the greeting an actual copy of a plate proof of New Zealand type A1, and read, "Here is the proof we wish you a Merry Christmas, etc." What those fellows up at 'old 'ornby Street cannot think up!

BNAPS

Do not forget FIPEX and BNAPEX in 1956. ★

High Prices

• British North America attracted keen competition in a recent sale by H. R. Harmer Inc., New York. A Canada 1864 2c rose imperf. un gummed pair (cat. \$120) brought \$82.50; a Jubilee \$4 o.g. (\$60), \$52, used (\$40), \$30. The 1908 Quebec Tercentenary issue in imperf. un gummed pairs (Holmes \$200) sold for \$140. Later imperf. o.g. pairs sold around 50 to 70 per cent of Holmes' catalogue prices. A specialized plate block collection from 1935-55 brought 75 per cent of Scott at \$350. ★

TRAIL OF THE CARIBOU

(Continued from Page 31)

Back in February and March of 1947 we ran articles on the Travelling Post Offices of Newfoundland, illustrating the various cancels and giving earliest and latest dates of use. The article was supplemented with additional bits in August 1947, June 1948 and March 1955. Now Dr. Allan Wilkinson (BNAPS 935) of Old Perlican, Newfoundland, is in with an earlier date of use of the TREPASSEL T.P.O. marking, our No. 111. The new date of use is now February 28, 1928. ★

Distinguishing the Dies of the 1c and 2c Maple Leaf Issue, 1930-31

PHOTOGRAPHY BY WILLIAM SCHELLER

THE 1 cent and 2 cent values of the 1930-31 issue of Canada were printed from two dies. The explanation given in Scott's Catalogue gives the impression that the characteristics for each die for both values are the same, which is not true, as a study of the enlarged illustrations will show.

Reprinted with permission
from the SPA Journal for
December 1954

THE ONE CENT VALUE — Scott 163 and 163b



(1) The stem of the maple leaf in the upper left corner is **curved downwards** towards the left.

(2) There is a small colorless dot in the right maple leaf where the veins of the leaf meet at the bottom.

(3) The letters of POSTAGE at the right are nicely formed; the "S" is round at the



(1) The stem of the maple leaf in the upper left corner is **straight**.

(2) There is no colorless dot in the right maple leaf where the veins of the leaf meet at the bottom.

(3) The letters of POSTAGE at the right are poorly formed; the "S" is flat at the bottom; there are four thick colored lines be-

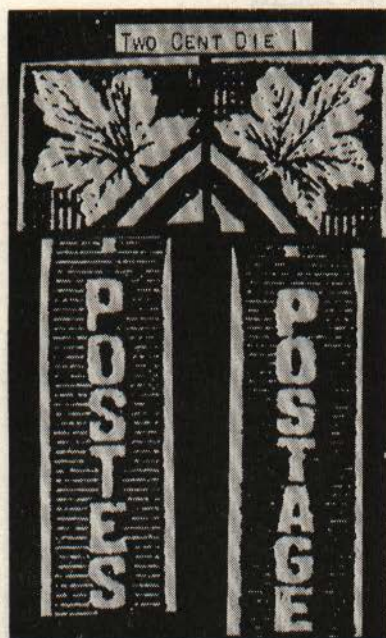
bottom. There are three thick and one thin colored lines between the "P" and the colorless ornament above it; the horizontal lines below the "E" do not touch the heavy vertical lines at the left.

(4) The letters of POSTES at the left are nicely formed; the top of the "S" is round.

tween the "P" and the colorless ornament above it; the horizontal lines below the "E" touch the heavy vertical line at the left.

(4) The letters of POSTES at the left are poorly formed, and thinner; the top of the "S" is flat.

THE TWO CENT VALUE — Scott 165, 165a, 166 and 166b

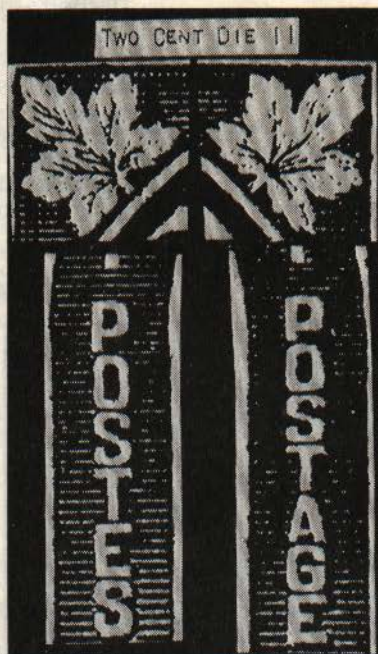


(1) The stem of the maple leaf in the upper left corner is **curved downwards** towards the left.

(2) There is a small colorless dot in the right maple leaf where the veins of the leaf meet at the bottom.

(3) The letters of POSTAGE at the right are thick; the top of the "P" encloses a tiny dot of color; the bottom of the "S" is round.

(4) The letters of POSTES are thick; there are three colored lines between the "P" and the colorless ornament above it.



(1) The stem of the maple leaf in the upper left corner is **straight**.

(2) There is no colorless dot in the right maple leaf where the veins of the leaf meet at the bottom.

(3) The letters of POSTAGE at the right are thinner; the top of the "P" encloses a large spot of color; the bottom of the "S" is flat.

(4) The letters of POSTES are thinner; there are four colored lines between the "P" and the colorless ornament above it.

Other differences can be noted from a study of the illustrations, and there are further differences in other parts of the design (not illustrated).

The two cent deep red and the two cent dark brown are the only values that were printed from both dies. ★

PAGES FROM A B.N.A. SCRAPBOOK



Items gathered and clipped by R. J. Duncan and G. P. Lewis

ITEM 24:

The Eastern Philatelist, May 1891.

The Canada 2 Cent, Register, Brown, Error—Because the orange 2-cent register can be changed to a brown, several well-known dealers and others have termed this error a "changeling." I take their word that it can be changed, but they should not prejudice the mass of collectors against originals, which were issued by the **P.O. Department** and did service for registration fees. The first to notice this error were prominent collectors employed in the post office in Halifax, I think, who secured a stock unused, and I would call on these gentlemen to aid in proving the authenticity of this error. I buy large quantities of register stamps from parties not interested in philately, and among these I have found a great many of the errors, and they not knowing they command a higher price, put them in with the others. Considering these points, do you think they would go to the trouble of changing color, where they would make nothing from it? I do not. Sometime ago I bought a "changeling" from a counterfeit dealer in Boston (you all know him I guess), and was surprised at the difference between my specimens and his. Mine are quite a bright light red-brown, while his is a murky, dark brown, and has a blurred appearance.

I have 14 different shades of this stamp, and in view of the way I obtained them, and the comparison with one obtained from a party whose business it was to make changelings and counterfeits, I am sure they were issued by the Post Office, either as a trial color or by error, and that there is no need of auction cataloguers in listing this stamp to add such information as "so-called error" or (?) mark.

The 3-cent postage of 1870 is also found printed in the same color.

My specimens of these stamps are always open to inspection by anyone who considers himself capable of passing a just verdict on their authenticity.—R. F. McRae.

ITEM 25:

The Western Collector, July 1931.

Canada 1898 "Numeral" Issue: Re-entries and Varieties on the One Cent Green—While remounting my collection of Canada I noticed a variety on the above stamp, which I have called a major re-entry in my list below. Since finding this variety, I have had the privilege of examining a stock of several thousand unpicked copies of this stamp in the possession of Mr. Van and was unable to find a duplicate. Hence I believe this to be a very scarce variety. However, I found several other varieties, listed below, which are also quite scarce. The major re-entry has been examined by Mr. Jarrett and he has pronounced it a beauty. In addition to the varieties listed, there are worn plates, which show the frame lines almost worn away, especially on the top and left side; also shift printings.

List of Varieties

Major Re-entry—The horizontal lines in the oval containing the words "CANADA POSTAGE ONE CENT" are extended out into the right margin. Lines run through all the words "CANADA POSTAGE ONE CENT", also the upper left maple leaf and lower left numeral. One copy.

Minor Re-entries — (a) The horizontal lines of the oval extend to the right, but not as far as in the major variety. Lines in letters CAN and GE, and in white oval frame lines on the left side from about opposite the Queen's mouth upwards. Four copies—two singles and two in pair with normal.

(b) Lines in GE of POSTAGE and faint traces in CAN of CANADA. Two copies—one single and one in pair.

(c) The horizontal lines in right oval extend slightly into the white space enclosing the oval. One copy in pair.

(d) The top frame line and top horizontal lines of the background are doubled. One copy in pair.

CONTINUED ON PAGE 38

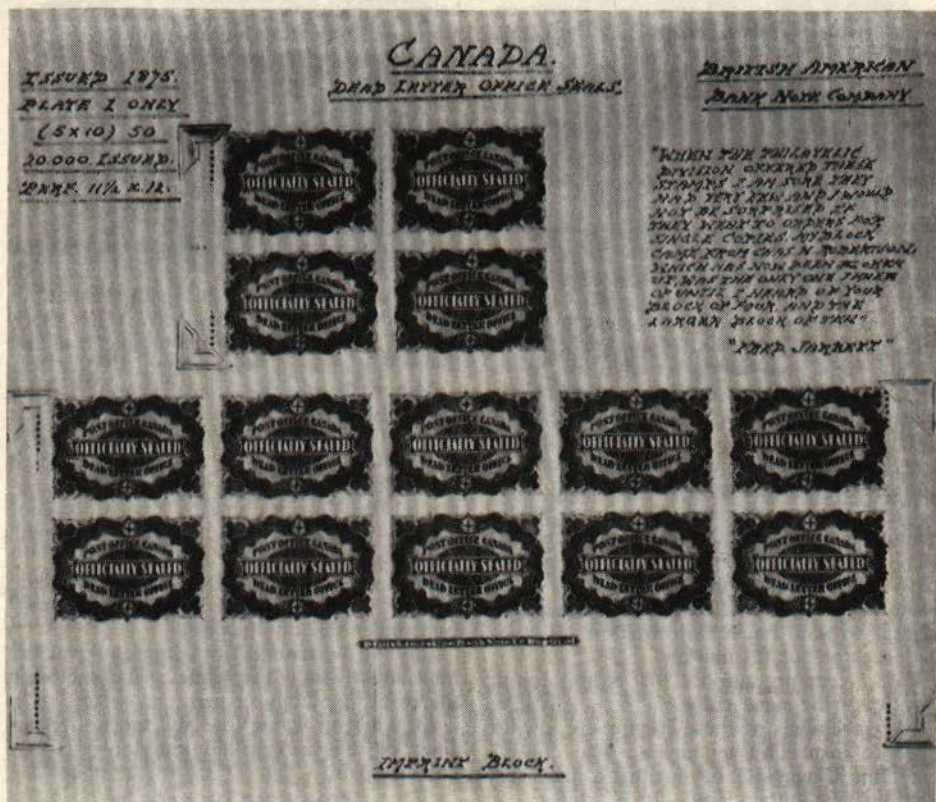
THE EDITOR'S MAILBAG

Plate Block Article

I was much interested in the article by Mr. T. B. Higginson (BNA TOPICS, June 1955) relative to Canadian mint blocks. Like many others, I have been fascinated by this type of collecting. I started many years ago—collecting “mint blocks of four or more”—this going back to the “Large Victorian Heads”. At the present time there are 5,250 blocks, and a total of 29,765 stamps. In addition, I have 375 complete sheets, going back quite a long way. I have concentrated on the matched corners for many years, and the following may be of interest to your readers.

“OHMS” surcharge—complete with the exception of 8 items. I have a block of the

50c Lumbering, lower right, 4x4, plate of course. A close friend of mine acquired from the Department a similar block of 16, lower left with the missing dot, beautifully centered. I have half-sheets (with the missing dots) of the 10c, 14c and 20c, and the Airmail 7c (Pl. 1); large blocks of the 5c (two different positions); all the Surcharged “G”, including the “Fish”; all the Georges (ordinary) from 1950. This includes the 6c orange (more than well-centered). Still short four to complete the “Royal Tour”. Am now endeavoring to complete the “War Issue”—picked up a nice batch recently which helped considerably. A few items missing from the 1937’s—it is surprising how they drift in once in a while, when one seems in a state of despair. Naturally I have all the CAPEX,



sheets besides. I picked up four sheets of the Grain Elevator—one missing corner was not amongst them, but I acquired this later from Toronto. How pleased this made me!

You may be interested in the "Bluenose" sheets, two of the upper panes; also photos

of the War Tax of 1916 (Die 2) and the Dead Letter Office Seals, 1875, with imprint block of ten. (See photos on opposite page.) block of ten. (See photos below, on opposite page and on cover.)

Hubert Lethaby (No. 723).

(MORE LETTERS ON NEXT PAGE)

CANADA.

ISSUED
SEPT. 1916.

WAR TAX ISSUES.

PLATES USED
15 AND 16.

DIE II.



Hairlines

In the TOPICS for May 1955 the topic of hairlines was raised. I have just made a study of the 2 cent Edward (No. 90) and out of nearly a thousand copies I came across three real hairlines. All have hairlines running parallel and horizontal from the lower left corner of the stamp.

The fourth copy I found—by far the finest—has a straight line running along the upper edge of the stamp parallel with the frame.

This line is completely separated from the frame and very distinct. It runs from one side to the other and looks as though it would continue on the adjoining stamp.

Obviously this is not a hair as the line appears to be almost machine-tooled. (1) Is it a variety? (2) Has anyone seen one like this, or have one?

Grant Showers (No. 1331)

Newfoundland Variety

I have the 3 cent carmine of Newfoundland (Scott No. 255) with the "A" of NEWFOUNDLAND set with a distinct bar instead of the normal "A". I had the stamp used, and being on the lookout, I found it in a pair unused, one normal.

J. H. Johnson (No. 793)



An Earlier Date

In Sissons' auction of August 24-25 last, there was an item, No. 304—3c Carmine Admiral. imp.—dated Feb. 19, 1924. Scott 138. "Earliest known date."

I am enclosing a picture (see above) of a block of four I have in my collection, on piece, and the cancellation, as you can see, is January 31, 1924.

Perhaps someone else will come up with a first day cover!

Jas. B. McClelland (No. 933)



MANY readers will be interested to learn that the national issue of Easter Seals, first printed in 1949 in English as well as English and French, will for the first time this year be distributed in each of the ten Canadian provinces.

Public distribution, which is made by provincial organizations affiliated with the Canadian Council for Crippled Children and Adults, will be made in March.

Meantime, the various collector items including blocks, imperfs., P.C.P.'s, in sets of all years or individually, will be made available.

Interest in these seals has grown considerably since the first issue; the designs are distinctive and attractive, mostly in several colors, making them a nice addition to any stamp collection.

For those who have not got the earlier issues, a complete set of perf. blocks English or bilingual, may be had for \$1.00, and for those bringing their sets up to date, blocks will be included with a sheet of seals at \$1.00. Seals of any one year are also available: sheets \$1.00; blocks 15 cents each; P.C.P. sets, 25 cents. ★

BNA SCRAPBOOK

(Continued from Page 37)

(e) Slight doubling in lines of the lower left corner. Two copies.

Varieties—Base of the left numeral damaged, giving the appearance of a tail attached to the centre of the base. One copy.

Hair lines in lower left corner. One copy.

Frame lines extended, possibly guide lines. Three copies showing line extended downwards on left side, and one copy showing line extended upward on right side.—
W. A. Nicholson. ★



PERFIN

SECRETARY: R. J. WOOLLEY,
359 Ellis Park Rd., Toronto 3, Ont.

STUDY GROUP

APOLOGIES to our perfin fans, but it was entirely unintentional that we missed our column last month. The editor did not use the one intended for the November issue, thus giving the writer the impression that we were one month ahead. What does he do—uses two months' material for the December issue.

The handbook sales have exceeded our expectations for the first three months of circulation, and our venture into the publishing field is already close to covering the additional cost of production and a good stock of handbooks still on hand.

We are getting some mail as a result of interested collectors checking their accumulations and reporting their finds.

Wally Gutzman (No. 1300) of Strathmore, Quebec, has evidently found a large accumulation to sort over and has been good enough to send us the following three new items for illustration and record.

help in identifying the user of this design will be appreciated. The Montreal area is the best possibility, and although the letters read MTM, don't overlook the fact that they may read TMM in a monogram style of arrangement.

F. One of this design has previously been reported, but was thought to be doubtful and was not listed at the time. The "F" is the same form of letter as the "E" of E1, the T. Eaton Co. of Edmonton, Alberta, and could still be the same "E" with the lower horizontal bar of the letter missing. We illustrate it and accept it for listing in the hope that we may eventually determine the user or establish its status as a broken pin type.

The stamp is a 2 cent green 1928 (Scott No. 150) and has sufficient postmark to read "... & Montreal", part of an R.P.O. cancellation, but no direction marking legible.



MTM. This is one a 2 cent green 1922 (Scott No. 107). There is a wavy line machine cancellation which is of no help in locating the city or town where this item may have originated. The initials do not fit any of the companies with post office permits which have not yet been reported or the known users of Cummins machines. Any

NP. Another new listing, and again with very little evidence on the stamp to be of assistance in identification. A machine wavy line cancellation. This perfin is on a 3 cent Royal Visit of 1939 (Scott No. 248).

These new listings will be added with the following catalogue descriptions:

No.	Description	Name of User	Issue
F4	F H9½	1928
M22	MTM H5½, 9½, 5½	1922
N11	NP H9½	1946

Canadian Illustrated Covers

By E. L. PIGGOTT

No. 13

AMONG the early stamp dealers in Nova Scotia were H. L. Hart, Donald A. King and Henry Hechler, all of whom at one time or another had large stocks.

Covers featuring stamp dealers' corner cards are popular items. The cover illustrated, used by Mr. Hart of Halifax, featuring the New Brunswick locomotive stamp, is a fine example. It seems strange that a Nova Scotia dealer would feature a New Brunswick stamp in his advertising rather than one from his own province, but possibly other types of illustrated covers not seen by the writer were also used by this

dealer. However, it must be said that the locomotive stamp provided something new in B.N.A. designs, which no doubt prompted Mr. Hart to feature it on his advertising envelopes. ★



COVER PROVES 'NON-DEMONETIZATION'

AS EVERY BNAPSer knows, Canada's stamps have never been demonetized. (There is, of course, the exception of the Prince Edward Island remainders, declared invalid for postage after having been sold in bulk to a dealer.)

Recently, an opportunity presented itself to provide visible proof of this fact of non-demonetization.

Working over a small stock-book of duplicates, I came across a mint, but badly damaged copy of the 1898 Map stamp, and also a defaced mint copy of the 1935 3 cent Jubilee.

Both were utterly worthless as they were. It occurred to me then, to prepare a cover to demonstrate that Canadian stamps are acceptable for postage regardless of their date of issue. The result is here illustrated.

Charges of fraud have been levelled against me by friends to whom I have shown



the cover. But, since fraud is either (1) pretending that something is that which it is not, or (2) pretending that something is not that which it is, I don't think the charges stand up. The cover was prepared merely to demonstrate a fact.

On the other hand, there is one flaw—the cover does not pay rate. It carries one cent excess postage over the current four cents eligible for a drop letter.—T. H. Harris (BNAPS 1194). ★

STREET CANCELLATIONS OF CANADA



STANDARD TYPE

PRINCE ARTHUR STREET,
MONTREAL. Standard type.

CERTAIN CITIES of Canada became large enough by the Eighteen-eighties to need sub-postoffices to furnish adequate postal service. Usually these sub-offices were designated by the name of the street on which they were located. The street name would then appear in the cancellation of that sub-office. These are the "Street" cancellations. They were used by at least four and probably five or more Canadian cities.

There are four general types: Jarrett Type 171A, the circular postmark followed by a number in bars; Jarrett Type 368, the roller; Jarrett Type 373, the "squared circle", so well covered by Dr. A. Whitehead; and a type which I shall designate as the "Standard" type. This standard type is the common town postmark with the street name in the upper portion of the circle, and the name of the city in the lower portion of the circle, where the province name ordinarily is placed.

I cannot improve on the dates included with Jarrett's listing on page 578 of his Standard British North American Catalogue of 1929. I can add several sub-offices to the list and will include his to make this check list as complete as possible.

The following list is by cities, listing all sub-offices that I have at this time.

HALIFAX

Gottingen Street

Standard Type—common, in use at least as late as April 29, 1910.

Morris Street

Standard Type—Common.

HAMILTON

James Street

Standard Type—Common.

Pearl Street

Standard Type—Common.

Steven Street

Standard Type—Common.



STANDARD TYPE
Variety, no outer
circle.

TORONTO WEST. Standard
type, variety no outer
circle and barred killer
with office name.



MONTREAL

Chaboillez Square

Standard Type but without outer circle—
uncommon; the latest date I have is
July 20, 1898.

Cherrier Street (Two sub-types)

Standard Type without the outer circle—
rare; I have only one copy dated March
28, 1896, on a one cent Small Queen.

Standard Type—This is also rare; again
just one copy dated 1899 on the half-
cent Numeral.

Mount Royal Avenue (?)

Standard Type without the outer circle—
rare. The one copy I have is dated De-
cember 31, 1897, on a one cent Small
Queen. The copy has only a partial
strike of the cancellation; the first let-
ter M is legible and the last two AL, as
well as AVENUE and MONTREAL. Ex-
trapolating the avenue name should
contain 11 letters; counting the space,
Mount Royal fits and Montreal had a
Mount Royal Avenue at this time.

Notre Dame Street West

Jarrett Type 368—rare; I have one ex-
ample on a one cent Numeral.

Jarrett Type 373—rare; one copy dated
June 24, 1895, on a three cent Small
Queen is all I have found.

Standard Type—common.

Ontario Street

Standard Type—sometimes has A.M. or
P.M. above the date and sometimes has
the time as well; common.

Peel Street

Standard Type—rare; my only copy is
dated September 19, 1899, on a three
cent Maple Leaf surcharged two cents.

Prince Arthur Street

Standard Type—scarce; all my copies are
dated October or November 1896.

St. Catherine Street

Jarrett Type 368—scarce to rare; one
copy on the eight cent Maple Leaf.

Standard Type—common.

St. Catherine St. Centre

Standard Type—common.

St. Catherine Street West

Standard Type with the street name at
the lower portion of the circle and
Montreal P.O. at the top of the circle,
probably rare; I have one cover bear-
ing a three cent red and a ten cent blue
of the George V issue dated November
11, 1924.

St. Denis Street

Standard Type without outer circle—un-
common but not scarce.

St. Lawrence Street

Standard Type—scarce; used at least in
1896.

St. Lawrence Street Centre

Jarrett Type 368—rare; one copy on the
two cent Numeral.

Standard Type without the outer circle—
rare; one copy dated July 15, 1896, on
the five cent Small Queen.

OTTAWA(?)

Bank Street

Standard Type—rare; I have only one
copy whose date is probably 1898 on an
eight cent Maple Leaf. Bank Street is
legible on the stamp; however the town
portion of the mark is off the stamp.
All that is visible is OT. There was a
Bank Street in Ottawa at this time so
I feel justified in believing this cancel-
lation occurred in Ottawa.



JARRETT TYPE 171A



JARRETT TYPE 373

TORONTO

Bathurst Street

Standard Type—uncommon; this was used at least as late as July 20, 1905.

Bleecker Street

Jarrett Type 373—common. Dr. Whitehead reports the street name spelled with and without the C. Unfortunately I have only the former.

Bloor Street

Standard Type—uncommon.

Broadview Avenue

Jarrett Type 368—rare; one copy on a three cent Numeral.

Standard Type—scarce; used as late as February 13, 1933.

Carl(e)ton Street—Spelled with the E on my earlier copies and without the E on the later ones. I believe it to be the same office.

Jarrett Type 368—rare; one copy on an eight cent Numeral, spelled Carlton.

Standard Type — uncommon; spelled Carleton at least until January 27, 1892 and spelled Carton as early as March 21, 1899.

Clinton Street

Standard Type—scarce. A variety with TORONTO, ONT. at the top and CLINTON STREET at the bottom of the circle appears on a cover dated May 16, 1919.

Dundas Street

Standard Type—uncommon; all my copies are on Numeral issue stamps. A variety of this in blue violet reading TORONTO (DUNDAS STREET) around the upper portion of the circle and ONT. at the bottom, was used as late as January 21, 1931. This was a rubber handstamp.

Flm Street

Standard Type—common.

Lee Avenue

Standard Type—rare; I have one copy on a one cent Maple Leaf postcard.

Parliament Street

Dr. Whitehead records this on Type 373—rare.

Standard Type—common.

Peter Street

Jarrett Type 368—scarce.

Standard Type—uncommon; there is a variety of this type, of which my only copy is dated June 28, 1943, in which TORONTO PETER ST. is at the upper portion of the circle and ONT. is at the lower.

Queen Street East

Jarrett Type 373—uncommon.

Standard Type—rare; one copy with an illegible year date on a three cent Small Queen is all I have.

Rusholme Road

Standard Type—scarce.

St. Joseph Street

Standard Type—common.

Spadina Avenue

Jarrett Type 171A—common.

Jarrett Type 368—uncommon.

Jarrett Type 373—scarce.

Standard Type—common. This also occurs as a sub-type with TORONTO ONT. SPADINA AVE. starting at the middle of the top of the circle and continuing around the circle. A piece so cancelled dated August 22, 1919, is in my collection. A second variety with TORONTO ONT. at the top and SPADINA AVE. at the bottom of the circle is used on a cover I have dated January 24, 1934.

Strachan Avenue

Jarrett Type 373—uncommon.

Standard Type—uncommon.

York Street

Jarrett Type 368—rare.

Jarrett Type 373—common.

Standard Type—common.

There are other sub-postoffices that functioned in Toronto about the Small Queen

period, that were not named after streets and so are not properly of this group. Of Jarrett Type 171A there are, of course, Parkdale, Yorkville and Riverside, ranging from common for Parkdale to uncommon for Yorkville and scarce for Riverside. Of the Standard Type there are Riverside Beach, Brocton and Toronto Junction; these are uncommon. Toronto East, Toronto North and Toronto West are the Standard Type coupled with a circular killer of thin bars enclosing the postoffice name which is horizontal and in two lines. Toronto East and Toronto West are scarce

and Toronto North is uncommon. A Toronto cancellation having S DEPOT or Y DEPOT at the bottom of the circle, appeared in the late eighteen-nineties. It apparently is a sub-postoffice cancellation.

These cancellations have been rated common, uncommon, scarce and rare. These ratings are based solely on personal experience in searching for them for some years. My interest in these cancellations stemmed from an interest in the Small Queens issue and as a result most of my material is from this period. I would be grateful for any additions that other collectors have found. ★

Sketches of BNAPSers . . .

By V. G. GREENE (BNAPS L40)

No. 75: William J. Scott (253)

THE FIRE MARSHALL of Ontario, and one of the prominent philatelists of the province, is William J. Scott, Q.C., who was born near Owen Sound, Ontario, on June 30, 1900. Graduating from the University of Toronto (B.A. and L.L.B.) and Osgoode Hall, he practiced law in Owen Sound for some years before being appointed Fire Marshall in 1935.

Mr. Scott collected stamps as a youth and about 1940 he found his old collection and gave it to his daughter, who sold it to her brother (for \$5.00!). As the latter began to work on it the father's interest was again aroused and he has been collecting seriously ever since. He specializes in the Canada Large Queens issue and has an excellent collection of those popular stamps.

In 1946 Mr. Scott began to write his celebrated column in *Weekly Philatelic Gossip*, "Canada Calling", and how he started it makes an interesting story. It appears he was irked by the articles appearing in *W.P.G.* on Canada and wrote to the editor asking "how people can be so dumb." The editor replied, "If you don't like what we print, suppose you write it?" and he's been doing so ever since, although the stress of business prevents his writing the column as often as he would wish.

A Fellow of the Royal Philatelic Society, Mr. Scott is also a member of the Collectors Club of New York, Essay-Proof Society, American Philatelic Society, Toronto Stamp Collectors Club, Canadian Philatelic Society and the Washington Philatelic Society. He

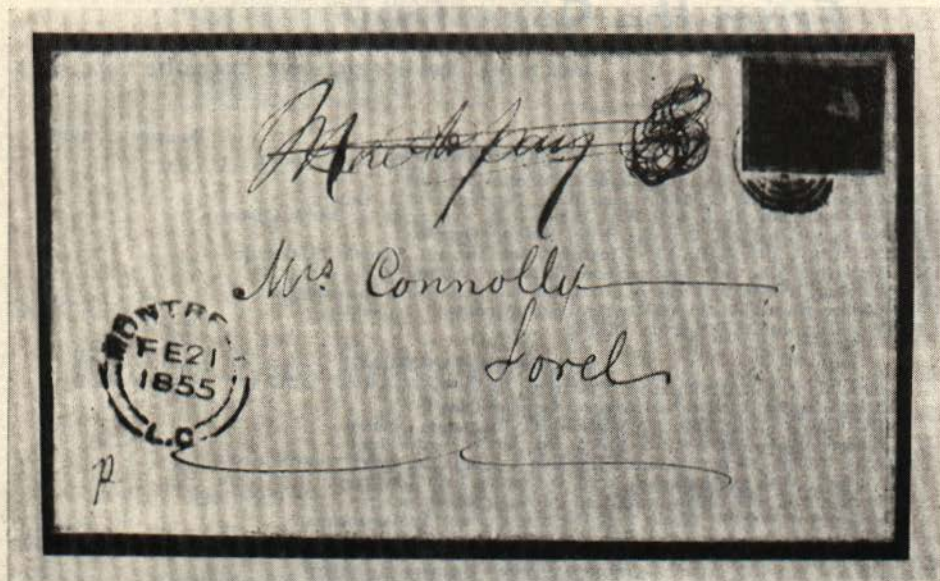


was on the board of CAPEX and his clear legal mind helped solve many problems.

His other hobbies are photography and pistol-shooting, but I am sure he would drop his pictures and pistols if some member would sell him a copy of the Large Queens 15c value dated 1882, which is all he needs to complete his series of dates on this long-lived stamp. ★

PENCE TALK

By RICHARD P. HEDLEY



WE ILLUSTRATE herewith another 3d cover—addressed to Sorel, L.C., a small town about 45 miles north of Montreal, on the east side of the St. Lawrence. It is postmarked Montreal, Feb. 21, 1855, and backstamped William Henry, Feb. 22, 1855. Evidently William Henry was the post office serving the area at the time, although no such town appears on a current map or gazette of that day, that is in the writer's possession.

On the face of the cover is the manuscript notation "MORE TO PAY 3" and then it is crossed out. It probably was rated at first as a double-rate letter, until it was found to be a printed circular. The contents is a printed notice dated February 19, 1855, and sent to the shareholders of the Montreal & New York Railroad Company giving facts about the proposed consolidation between that road and the Champlain & St. Lawrence Railroad.

Now to the 3d Beaver itself—it is the brown-red shade on thin oily paper of the

1853-54 issues. Re-entry marks also are plainly to be seen and it is position 61, Pane B, as described in Boggs, page 128.

There are many revelations—at least to this individual—when one takes note of prices on early Canada. Sure, the Pence Issues are bringing enormous prices when in very fine condition or better; however, when these are compared with prices for the 1859's, for instance, you come up with some interesting facts. You seldom see a 7½d (Scott No. 9) bring even full catalogue—unless it is described as "extremely fine" such as in the Leland Powers auction sale early in 1955. Many times very fine copies bring quite a bit under the catalogue valuation. Nuff said!

Does any reader have a Pence cover dated prior to July 6, 1851, addressed to the Maritimes? The stamp is unimportant, as the writer would like to see these rate markings. Will be glad to hear from you. ★



OFFICIAL SECTION

BRITISH NORTH AMERICA PHILATELIC SOCIETY

MONTHLY REPORT . . .

From the Secretary

JACK LEVINE, 2000 HOPEDALE AVE., CHARLOTTE 7, N.C., U.S.A.

January 15, 1956.

NEW MEMBERS

- 1373 Bond, C. C., P.O. Box 335, Station B, Montreal, Quebec
1374 Chandler, Charles M., 114 Armour Blvd., Downsview P.O., Ontario
1375 Grierson, Thos., H. J., 3791 West 35th Avenue, Vancouver 13, British Columbia
1376 MacLaurin, J. C., 12 Burnside Drive, Toronto, Ontario
1377 McConnell, Mrs. G. H., 1449 Kingston Road, Apt. 103, Toronto 13, Ontario
1378 McIntyre, V. S., 122 Lancaster East, Kitchener, Ontario
1379 Pinniger, William J., 8 Pascoe Street, Burwood, E13, Victoria, Australia
1380 Walker, Harold W., 26-300 River Avenue, Winnipeg 13, Manitoba
1381 Woodman, M. M., Compton, Quebec

APPLICATIONS PENDING

- Catterall, F. W., 518-6th Street, Saskatoon, Saskatchewan
Frasch, Zoltan, 122 Drayton Avenue, Toronto, Ontario
Harrison, A. F., 37 Elizabeth Street North, Brampton, Ontario
Johnson, Finley, 305 Sherwood Bldg., Spokane 1, Washington
King, William Henry, 144 South Edwards Avenue, Syracuse 6, New York
Koeppel, Adolph, 633 Chelsea Road, Oceanside, L.I., New York
Lincoln, Leo L., 14 Kenwood Street, Pittsfield, Massachusetts
Rosen, Saul W., 107 Avenue Louis Pasteur, Boston 15, Massachusetts
Wasserman, David, 160-55 Willets Point Boulevard, Whitestone 57, New York

APPLICATIONS FOR MEMBERSHIP

(Objections must be filed with the Secretary within 15 days after month of publication)

- BARTLETT, Bart H., 651 Uplands Road, Louisville 6, Ky. (C) CAN, NFD, PROV—19th and 20th century mint and used postage and blocks. Prestamp, stampless, 1st day and 1st flight covers. Plate blocks. Coils. OHMS. Mint and used booklet panes. Federal, provincial and tax-paid revenues. Mint used and semi-official airmails and on cover. Postal stationery entires. Proofs and essays. "Locals". RR., flag, 2- and 4-ring and "squared circle" cancellations. Proposed by L. S. Holmes, No. 177. Seconded by H. A. MacMaster, No. 484.
- FARQUHAR, Lloyd M., RR. No. 1, Westfield, Kings Co., N.B. (CX) CAN, NFD, PROV—19th and 20th century mint and used postage and blocks. SPECIALTY: Canada 1868 and Small Queens. Proposed by G. P. Lewis, No. 506.
- KEMP, Clarence A., 130 Forest Hill Rd., Toronto, Ont. (CX) CAN—Mint and used postage and blocks. Territorial, 2-ring and town cancellations. SPECIALTY: Small Cents. Proposed by G. P. Lewis, No. 506. Seconded by W. H. Sparrow, No. 466.
- KERN, Carl F., 2700 Sunset Dr., Bellingham 27, Wash. (C) CAN, NFD—19th and 20th century mint and used postage and blocks. Plate blocks. Coils. OHMS. Mint and used booklet panes. Mint airmails. Postal stationery entires. Proposed by H. A. MacMaster, No. 484.
- McCREADY, A. L., Cobden, Ont. (C) CAN—19th and 20th century mint and used postage and blocks. Pre-stamp, stampless, 1st day and 1st flight covers. Plate blocks. Coils. Mint and used airmails. Literature. Flag cancellations. Proposed by G. P. Lewis, No. 506.
- PARK, Marshall, Oil City, Ont. (CX) CAN—19th and 20th century mint and used postage and blocks. Plate blocks. Coils. OHMS. Mint and used booklet panes. Precancels. "Perfins". Proposed by E. N. Drake, No. 1178. Seconded by C. A. Ayre, No. 712.
- SHILLETTO, Jack, 3000 Racine St, Bellingham 9, Wash. (C) CAN, NFD—19th and 20th century mint and used postage. 1st day covers. Plate blocks. Coils. OHMS. Mint and used booklet panes. Mint airmails. Postal stationery entires. Proposed by H. A. MacMaster, No. 484.

CHANGES OF ADDRESS

- Bond, Cpt. A. K., RCMP, Box 430, Enderby, B.C.
Forfar, Keith, 2966 N. 41st Street, Milwaukee 10, Wisc.
Hanselman, Mae M., 67 Burwell Street, Brantford, Ont.
Perkins, Thomas J., 3225 Humphrey Ave., Richmond, Calif.
Shaw, Alan B., 3515 Holland St., Wheatridge, Colorado
Tucker, George E., 204 Christie Grant Bldg., Edmonton, Alta.

REPLACED ON ROLLS

1209 Swanker, Wilson A., 133 E. 58th St., New York 22, N.Y.

RESIGNATIONS RECEIVED

1177 Carlsen, Miss Irina, Dept. Slavonic Studies, Univ. of B.C., Vancouver 8, B.C.

1154 Churchill, L. R., 3257 W. King Edward Ave., Vancouver 8, B.C.

982 Corbett, S. P., Pender Island, B.C.

1197 Liveright, Frank I., 132 Second Ave., Westwood, N.J.

RESIGNATIONS ACCEPTED

Brisley, Charles L.

Epstein, Joseph

DECEASED

469 Bruce, A., Devenick's Pharmacy, Cults, Aberdeenshire, Scotland

MEMBERSHIP SUMMARY

TOTAL MEMBERSHIP, December 15, 1955	929
NEW MEMBERS, January 15, 1956	9
REPLACED ON ROLLS, January 15, 1956	1
	<hr/>
	939
RESIGNATIONS, January 15, 1956	2
DECEASED, January 15, 1956	1
	<hr/>
	3
TOTAL MEMBERSHIP, January 15, 1956	<hr/>
	936

JACK LEVINE, Secretary.

REPORT . . .**From the Library . . .**

ROBERT J. DUNCAN, BOX 118, ARMSTRONG, B.C.

FINANCIAL STATEMENT BNAPS LIBRARY FOR 1955**CREDITS**

From Treasurer	\$100.00
Rentals	1.25
Cash	2.00
DEBIT balance, January 1, 1956	6.27
	<hr/>
	\$109.52

DEBITS

DEBIT balance, January 1, 1955	\$.61
Handbooks, etc.	98.55
Postage	8.21
Express	1.35
Supplies80
	<hr/>
	\$109.52

I wish to particularly thank our President for the donation of two volumes of Boggs; and also thank the following for donations and help: H. G. Bertram, Fred Jarrett, Stanley Stamp Co. Ltd., J. T. Culhane, J. P. Clement, H. Reiche, D. Amos, H. A. MacMaster, N. S. Bond, CPS of G.B., N. Argenti, A. K. Grimmer, H. L. Paine, F. W. Campbell, R. Wrigley, Canadian Revenue Society, L. S. Holmes, W. M. Sprung, and many others.

ROBT. J. DUNCAN, Librarian.

LYMAN'S COMPLETE B.N.A. CATALOGUE FOR 1956

is in preparation. Order a copy early. This forthcoming edition will be the finest ever issued by me. Price 25c (refundable)

THE ONLY COMPREHENSIVE B.N.A. CATALOGUE IN CANADA

With latest prices. Dealers—Write us re stocking this catalogue for your customers as an accurate guide. (Sample 25c).

NEW PERMANENT ADDRESS FOR NORTH AMERICA. Use only this address for B.N.A.

ROBERT W. LYMAN (Canada) CO.

APS
ASDA
BNAPS

BOX 23, STATION D,
TORONTO 9, ONTARIO

CSDA
SPA

Classified Topics

Reserved for Members of BNAPS

RATES—2 cents per word per insertion; 500 words to be used as desired, \$8.00.

COPY for Classified Topics should be sent to Gordon P. Lewis, 37 Eldomar Ave., Brampton, Ont., to arrive before the 15th of the month previous to publication date.

FOR SALE

BETTER CANADA. Sets, singles, mint blocks. Send want lists (with references). H. G. Saxton, 139 Twelfth Ave., N.E., Calgary, Alta., Canada. (98tf)

CANADA, British Empire. Want lists please. E. K. Allen, 240 Spring Garden Road, Halifax, N.S., Canada.

A SHOWPIECE: Only known copy, Canada No. 65, \$5 Jubilee, unused, with stitch watermark, signed by H. R. Harmer: only \$50.00. Nelson Bond, 1625 Hampton Ave., Roanoke, Va. (132-1t)

EXCHANGE

ONE, TWO, THREE CENT Small Queen values. Both Montreal and Ottawa prints. Stripped of cancels. Wholesale amounts to trade for what have you in foreign (no B.N.A.) stamps. V. R. Yeaton, Eight Third Street, Dover, New Hampshire. (1t)

CANADIAN PLATE BLOCKS from #284 on, for Canadian Revenues, or O.H.M.S., quality stuff, collection, or any quantity. Advise what you have, or forward for offer. Roy Wrigley (#1065), 2288 Bellevue Ave., West Vancouver, B.C. 117-f

WANTED

I SPECIALIZE IN LETTERSHEET and lettercard rarities, errors, oddities, etc., in both air and non-air (continental style) varieties, mint or used. No post-cards, envelopes or wrappers wanted at all. I also accept postal folders, with or without stamps, from the year 1840. Payments are made within two days after receipt of approvals. F. A. Senecal, 1950 Claremont Ave., Montreal, Canada. (128-6t)

BNA TOPICS, Nos. 3, 4, 5, 14, 20 and 23. Have some early issues to exchange, or will purchase above numbers. F. Tomlinson, Coombe Leigh, Chestfield Road, Whitstable, Kent, England. 126-tf

FOR SALE

TWO WABUSH-KATSAO, Newfoundland First Flight covers, with C13 to C16 air stamps, cachet and Reg. One Gen. Balboa Montreal to Chicago 1933 flight, \$1.45 rate on cover. A limited quantity of Trans-Atlantic and Pacific flights. Sundry booklet panes and mint Canada, 1930 on. Plate blocks from Scott No. 274 to date, reasonably priced. First Day, Exhibition and Fair covers. Small quantity of Saskatoon Electrical Inspection stamps. These are very rare. Correspondence invited. C. A. Anderson, 1120-12th St. E., Saskatoon, Sask. (132-1t)

1859-1868-1870 ISSUES, choice singles in all values; 4-ring Numerals on 5c Beavers; 2-ring Numerals on Large Cents; 2-ring Numerals on Small Cents. 20th Century approvals. Correspondence a pleasure. Walter P. Carter, 47 Risebrough Ave., Willowdale, Ont. (132-2t)

SMALL QUEEN 3c. Have a quantity of covers dated in the 70's and 80's. May be able to supply some of your wants. W. T. White 6312 Marguerite St., Vancouver, B.C. (132-2t)

CANADA LARGE QUEENS at prices you cannot match anywhere. No. 22a, 1c red-brown, VF used, watermarked, wide margins, \$13.50; No. 24a, 2c green, superbly centered, lightly cancelled, watermarked, \$23.50; No. 26, 5c olive, VF mint, \$23.50; No. 27b, 6c brown, fine, lightly cancelled, watermarked, \$48.50; No. 29b, 15c red-lilac, superb mint, thick paper, hoardwalk margins, \$24.50; No. 29c, 15c red-lilac, VF, lightly cancelled, watermarked, \$38.50; No. 30c, 15c violet, VF, cardboard paper, net 2-ring cancellation, \$17.50; No. 31, 1c brown-red, laid paper, numeral-ring cancellation, badly cracked, but injury not visible from face, \$13.50. Immediate refund if not completely satisfied. Nelson Bond, 1625 Hampton Ave., Roanoke, Va. (132-1t)

WANTED

WANTED for cash or exchange, early Canadian illustrated advertising covers, prior to 1920. Patriotics, Exhibitions and Fairs, Hotels, etc. Send with your best price or for my offer. Bernard Scott, 6F Wellington Court, Halifax, N.S. (132-2t)

WANTED—The following Squared Circle postmarks, covers preferred. Type One: Aldergrove, Coleman, St. Hilarion. Type Two: Freeport, N.S.; Fort William West, Ont.; Millbrook, Ont.; Great Village; Spa Springs; Pointe a Pic; Richmond, Blyth; Coldwater; Forest; Millbrook; Ashcroft Station. Other rare Squared Circles wanted. Good prices paid or generous exchange. Dr. Alf. Whitehead, 52 Havelock, Amherst, N.S. (112-f)

Canada Mint Plate Blk. Specials

The Grimmer stock of Plate Blocks has recently been placed in our hands for disposal. The following are offered at special clearance prices and for the most part are much below regular selling prices. Supply of some limited. Others available at low prices as long as stock remains. Your want list will have our early attention—a few on hand from No. 231 to date.

No.	Val.	Pl.	UL	UR	LL	LR	No.	Val.	Pl.	UL	UR	LL	LR
276	4c	1	.30	.30	.30	.30	306	4c	6	—	7.50 OC	—	—
276	4c	2	.30	.30	.30	.30	306	4c	11	.30	.30	.30	.30
283	4c	2	.30	.35	.35	.40	306	4c	12	.28	.28	.28	.28
284	1c	1	.25	.25	.20	.18	306	4c	13	.30	.30	.30	.30
284	1c	2	.20	.20	.20	.20	306	4c	17	.28	.30	.28	.28
284	1c	4	—	—	1.50	1.25	311	4c	1	.50	.50	.45	.50
284	1c	5	.18	.18	.18	.18	311	4c	2	.40	.50	.45	.45
284	1c	6	.20	.25	.25	.20	315	4c	1	—	—	.45	—
284	1c	7	—	—	—	1.50	315	4c	2	.40	.40	.38	.40
284	1c	8	.20	.20	.20	.20	315	4c	3	.45	.50	.45	.50
284	1c	9	.18	.18	.18	.18	321	\$1	1	5.50	5.50	5.50	5.50
285	2c	1	.40	.35	.35	.35	321	\$1	2	5.25	5.50	5.25	5.50
285	2c	2	.40	.35	.35	.35	326	2c	3	.20	.20	.20	.20
285	2c	3	.45	—	.40	.45	326	2c	6	1.25	1.40	1.40	1.25
286	3c	1	.25	.25	.25	.25	327	3c	4	—	—	2.50	2.00
286	3c	2	.30	.25	.25	.25	334	50c	1	3.00	3.00	3.00	—
286	3c	3	.30	.30	.25	.25	335	4c	1	.35	.35	.35	.35
286	3c	4	.25	.25	.25	.25	335	4c	2	.35	.35	.35	.35
286	3c	5	.45	.55	.55	.60	336	5c	1	.40	.40	.40	.40
286	3c	6	—	.40	.25	.25	336	5c	2	.40	.40	.40	.40
286	3c	7	.25	.25	.25	.25	337	1c	1	.18	.18	.18	.18
286	3c	8	.25	.25	.25	.25	337	1c	2	.18	.18	.20	.18
286	3c	10	.25	.25	.25	.25	338	2c	1	.25	.25	.20	.20
286	3c	11	.25	.25	.25	.25	338	2c	2	.20	.20	.20	.20
287	4c	4	.60	.60	.60	.60	338	2c	3	.25	—	.25	—
287	4c	6	—	—	.50	.60	340	4c	1,2,4	Any position at			.35
287	4c	9	.60	.60	.70	.65	340	4c	3,5,6	Any position at			.30
287	4c	10	.75	.75	.70	1.35	341	5c	1-7 incl.	Any position at			.35
290	2c	1	1.50	1.50	1.50	1.50	342	6c	1,2	Any position at			.75
290	2c	2	1.60	1.60	1.60	1.60	343	15c	1,2	Any position at			1.00
291	3c	1	.30	.30	.30	.40							
291	3c	2	.30	—	—	.40							
292	4c	1	.35	.35	.35	.35	033	1c	1,2	OFFICIALS Any position at			.10
292	4c	2	.35	.35	.35	.35	034	2c	1,2	Any position at			1.25
303	3c	1	.35	.35	.35	.35	\$34	2c	3,4	Any position at			.15
303	3c	2	.35	.35	.35	.35	035	3c	1,3	Any position at			.20
304	4c	1	.40	.40	.45	.40	035	3c	2	Any position at			1.25
305	2c	4	.40	—	—	.40	036	4c	1	Any position at			1.75
305	2c	5	.20	.20	.20	.25	036	4c	2,4	Any position at			.30
305	2c	6	.18	.20	.18	.20	037	5c	1,2	Any position at			.30

DELUXE PLATE BLOCK COLLECTION

330 DIFFERENT PLATE BLOCK POSITIONS—An excellent lot to start this popular sideline. Made up as follows: 99 blocks 274-87, face \$10.40; 51 blocks 288-311, face \$15.07; 85 blocks 314-327, face \$15.64; 95 blocks 328-343, face \$19.16; total face value \$60.28. Retail value of approximately \$125.00.

SPECIAL AT **\$82.50**

REMIT BY MONEY ORDER OR CHEQUE.

CANADIAN CHEQUES REQUIRE EXCHANGE

L. A. DAVENPORT

230 LONSMOUNT DRIVE

TORONTO 10, CANADA

Auction Sales

OF RARE AND VALUABLE

British North America

AND OTHER POSTAGE STAMPS

HELD REGULARLY

Next Sale Feb. 22-23

The "W. H. Woods" Collection

(The property of W. W. Laird)

SUPERB PENCE

EXCEPTIONALLY FINE 1859

OUTSTANDING 1868's

ATTRACTIVE SMALL CENTS

LATER ISSUES AND NEWFOUNDLAND

ILLUSTRATED CATALOGUES AVAILABLE A MONTH BEFORE
SALE DATE

ESTATE PROPERTIES SOLICITED FOR SALE AT AUCTION
OR OUTRIGHT PURCHASE

J. N. SISSONS LTD.

59 Wellington West, Toronto, Canada

Phone: EMpire 4-6003

Cables: Sistamp, Toronto