

THE SLOGAN BOX



Newsletter of the BNAPS Slogan Cancel Study Group

Whole Number 45

January - February, 1997

Volume 10 Number 1

CHAIRMAN

Steven A. Friedenthal
3 Lindbergh Crescent
St. Albert, Alberta T8N 2S8
(403) 458-1233 e-mail nat@compusmart.ab.ca

SLOGAN BOX EDITOR

Daniel G. Rosenblat
5300 Edgeview
Byron, California 94514
(510) 516-1967

Dear Fellow Slogan Cancel Collector:

Following is the financial statement for 1996. While we have a cash balance of \$150.83 there are still two expenditures for 1996 that have not been paid. These are for copies of the *Slogan Box* to the Canadian National Archives and to the American Philatelic Library (I did not have the postal addresses of either but have e-mailed for the information). The BNAPS subsidy to study groups covers these costs. I estimate that the total cost for this will not exceed \$15.00 (and will bring our balance to about \$135.00). I am sending copies of the *Slogan Box* to all 1996 members in anticipation of their dues.

**BNAPS Slogan Cancel Study Group
Statement of Income and Expenditures for 1996**

Income

Membership fees	\$ 233.74
BNAPS subsidy	\$ 87.00
Back issues	\$ 15.89
Total Income	\$ 336.63

Expenditures

Photocopying	\$ 94.18
Supplies	\$ 2.40
Postage	\$ 79.22
Total Expenditures	\$ 175.80
Beginning Balance	\$ -
Income	\$ 336.63

Expenditures	\$ 175.80
Cash Balance End of Year	\$ 150.83

I have served as chairman (photocopier, treasurer, mailer, bottle washer) for a year now. I am willing to continue in this position of great honour, however, if anyone would like the job I am more than willing to pass it on. Please advise me. I apologize to members Dan Rosenblat and Tom Almond for incorrect spelling of their names in the last issue.

It is with sadness that I must report the passing of member **Leonard Harris**. Mr. Harris was one of the leading authorities on Canadian Slogan Cancels. Mr. Harris was the chair of the slogan study group of the Canadian Philatelic Society of Great Britain which did the early research on Canadian slogan cancels which was published in *Maple Leaves*.

CONTENTS

Message from the Chair	1
Observe Sunday	2
Unusual and Rare Slogan Use	
(New Market)	12
(Montreal)	13
Hand stamps	14

OBSERVE SUNDAY OBSERVEZ LE DIMANCHE
OBSERVEZ LE DIMANCHE OBSERVE SUNDAY

SLOGANS O-30 - 6465, O-31 - 6465-A AND O-45 - 6475

These slogans were initially classified in Issue 8 of mid 1989, and revised in Issue 21 of late 1991, but there is now sufficient new data available to warrant a further revision. The multiple dies were all illustrated in Issue 21, as well as a detailed explanation of their sponsorship and the resultant reaction to them that made this group the most controversial slogan ever issued by the Canadian Post Office, so these factors do not require repetition. This revision will therefore contain only a brief summary of use by year in the text, an unillustrated appendix of the usage by dies, and a listing by office, by year, by die, as available.

English Usage

First issue was in the fall of 1929, with 16 Universal dies, designated as Format A, sent to the following offices

CALGARY	HALIFAX	OTTAWA	TORONTO
CHARLOTTETOWN	HAMILTON	REGINA	VANCOUVER
EDMONTON	LONDON	ST. JOHN	VICTORIA
FREDERICTON	MOOSE JAW	SASKATOON	WINNIPEG

The same dies were reissued to the same offices in 1930-31, but all usage from 1930 was in the spring, to coincide with the issue of the bilingual version, which was always issued early in each year, in conjunction with Easter.

By 1932 six of the eastern using offices had switched to Perfect machines, requiring the addition of six new Perfect dies, with the same wording, but different ornamentation, designated as Format B. This permitted the ten remaining western offices still using Universal machines to be joined by six more western offices. BRANDON, LETHBRIDGE, MEDICINE HAT, NEW WESTMINSTER, PORTAGE LA PRAIRIE and PRINCE RUPERT. Therefore, 22 dies were available for use by 22 offices, and the same usage continued in 1933-34.

By 1935 all but four of the using offices had switched to Perfect machines, but only four additional Perfect dies of Format C were issued. Therefore, four of the U dies could be used at BRANDON, MEDICINE HAT, PORTAGE LA PRAIRIE and PRINCE RUPERT. Only ten of the 19 offices using P machines could be furnished dies. The ten offices selected were all major ones, as follows: CALGARY, HALIFAX, HAMILTON, LONDON, OTTAWA, REGINA, ST. JOHN, TORONTO, VANCOUVER and WINNIPEG. The eight offices dropped from 1935 use were CHARLOTTETOWN, EDMONTON, FREDERICTON, LETHBRIDGE, MOOSE JAW, NEW WESTMINSTER, SASKATOON and VICTORIA. Total use was from 14 dies issued to 14 offices.

By 1936 all four of the offices still able to use a U die in 1935 had converted to P machines, so four more Perfect dies of Format D were issued, permitting fourteen offices to have use in 1936-38. However four lesser offices, BRANDON, MEDICINE HAT, PORTAGE LA PRAIRIE and PRINCE RUPERT were omitted, while CHARLOTTETOWN, EDMONTON, FREDERICTON and SASKATOON were reinstated. The 14 remaining serviceable U dies out of the 16 originals were retained in reserve and had later use.

For unknown reasons, English usage was omitted in 1939-41, although there was bilingual use, suggesting that the English sponsor neglected to ask for it, while the bilingual sponsor did so request. The English use was revived in 1942, but by then HAMILTON, OTTAWA and TORONTO had converted from Perfect machines to Pitney-Bowes Universals, which could use the retained original Universal dies. Therefore, only eleven of the fourteen Perfect dies had use, together with three of the reserve U dies. The same fourteen offices that had use in 1938 were issued dies in April of 1942, but GALT was added by the reissue to it in May of one of the Perfect dies previously used in April.

English use was again omitted in 1943, but resumed in 1944. By then EDMONTON, LONDON, VANCOUVER and WINNIPEG had converted to PB machines, and used the reserve U dies, as did CHATHAM, making its first appearance as a using office. GALT, which had been issued a Perfect die late in 1942, became a regular user with a P die, so there were sixteen using offices in 1944, eight using U dies and eight P dies, leaving six unused P dies and six unused U dies.

There was again use at sixteen offices in 1945, but with changes. CHARLOTTETOWN and SASKATOON, both with P machines, were omitted, but FORT WILLIAM and YORKTON, also with P machines, replaced them. GALT converted from a P machine to a PB, and SOUTH EDMONTON, with a P machine, replaced EDMONTON, which had used a PB. Accordingly, use was from eight Universal dies and eight Perfect dies, leaving six dies of each type unused.

The same sixteen offices had use in 1946, the only difference being that SOUTH EDMONTON converted to a PB machine, so nine offices used U dies and seven used P dies, leaving five unused U dies and seven unused P dies.

English usage was omitted in 1947, but resumed in 1948 at seventeen offices, with changes from 1946 use. Use at BELLEVILLE appeared for the only time, and use was revived at VICTORIA and MOOSE JAW. Also, SOUTH EDMONTON, which had occasionally been alternated with EDMONTON, had use in addition to EDMONTON. To accommodate these four added offices, former use at three offices was omitted, CHATHAM, GALT and HAMILTON.

There was no further English use until 1951, but the revived use in that year was much curtailed. Such major offices as EDMONTON, LONDON, OTTAWA, VANCOUVER, VICTORIA and WINNIPEG ceased to be included, as well as BELLEVILLE, but the loss of these seven offices was only offset by the addition of COLEMAN. The use was therefore at only eleven offices, much the least that it had ever been. It seems probable that dropping so many major multi-machine offices was occasioned by the fact that at this time the number of spring time slogan appeals for very worthy causes was more than the major offices could handle, so to give them some relief, slogan 6465 was assigned a lower priority than the Red Cross, Crippled Children and Cancer.

The 1952 use was at the same eleven offices as in 1951. Since the Receipt Impression documentation ceased after 1952, the further use is not as well recorded as the 1929-52 use, but certain patterns evidence themselves. It appears that ten of the eleven offices used in 1952 continued use in for some time after 1952, the exception being SOUTH EDMONTON, not recorded or reported after 1952. The 1953-55 use was therefore from ten offices, CALGARY, COLEMAN, FORT WILLIAM, FREDERICTON, HALIFAX, MOOSE JAW, REGINA, ST. JOHN, TORONTO and YORKTON.

In 1956 all but a few Quebec office had converted to PB machines, so the remaining P dies of the slogan became obsolete, but fortunately there were still twelve of the original sixteen Universal dies serviceable, so all ten offices could use U dies, and in fact EDMONTON revived the usage that had expired in 1948, so eleven dies were used, with one in reserve.

However, the HALIFAX usage between 1956 and 1961 is quite peculiar, and requires a somewhat detailed explanation and some conjecture regarding its purpose. All normal usage was in April or May, usually in the two weeks following Easter, but HALIFAX use in 1956 has been seen in both May and December, from the same die, suggesting that it retained that die after the normal use period, and may well have used it intermittently in June-November. In 1957 the same die was used at HALIFAX in May, suggesting that it had been retained for at least a full year.

Further, in 1958 the same die has been seen used at HALIFAX on May 1 and on May 30, but a different die has also been seen used on May 26. Also, in 1959, the retained die has been seen used between June and December, but a different die was used at HALIFAX in May. This strongly suggests that HALIFAX had retained the 1956 issue die for at least three years, using it as a convenient obliterator whenever no other slogan had designated usage at the office, but that the Post Office was not aware of this, so a separate die was issued to HALIFAX in both 1958 and 1959 for May use, and the office used these separate dies as instructed, returning them as directed, but all the while retaining the 1956 issue die as a utility canceling device as needed.

In 1960 the retained die has been seen used from July to November, but no May use has been seen. However, May use must have existed, and it may have been from a separate unseen die, or it could have been from the retained die if the P.O. had become aware of the situation and did not send out a separate die for the normal use period. The retained die has also been seen used at HALIFAX in January of 1961, nearly five years after having been originally issued for 1956 use, but has not been seen used at any other office until 1962.

The usage by offices and dies remained the same in 1957-58 as in 1956, but COLEMAN has not been recorded after 1958, although it was such a small office that unrecorded 1959 use may exist. In any event, by 1960 use was from only ten offices, with eleven dies available, since one had been damaged in 1959. The same ten offices had 1961 use, but FREDERICTON has not been recorded after 1961, so 1962 use appears to have dropped to nine offices, repeated in 1963. FORT WILLIAM has not been recorded after 1963, so 1964-65 use appears to have been from only eight offices, CALGARY, EDMONTON, HALIFAX, MOOSE JAW, REGINA, ST. JOHN, TORONTO and YORKTON, with the reduction probably due to attrition of the available dies.

The 1966 usage was omitted, but a P.O. document indicates that a request was made for 1967 use, to which a reply stated that there were eight serviceable dies available, which would be issued to the same eight offices as in 1965. Similar requests were made in 1968-69, resulting in the same usage at the same eight offices. No English use has been recorded after 1969, probably as a result of the new P.O. policy to discourage use of non-bilingual dies, beginning in 1970.

The Proulx catalogue listed use at 32 offices in 1928-38, 1942, 44-46, 48-49, 1951-69, but this is incorrect. There were only 29 using offices, and the actual use was 1929-38, 1942, 44-46, 48, 51-65 and 1967-69.

Bilingual use

Slogan O-31 - 6465-A is unusual, in that it was not merely the bilingual usage of an English slogan, but rather that the English use was inspired by the original bilingual use sponsored by a Catholic organization in the province of Quebec. The bilingual sponsor differed from the English sponsor, and was more reliable in terms of requesting ' annual reissue, so that there was some usage of O-31 - 6465-A in every year from 1929 to 1965, excepting only 1950 and 1961. Usage was normally early in each year, preceding Easter, rather than following Easter, as was the English policy.

Initial 1929 use was from seven Universal dies in format A, the wording in two lines across the width of the die, without a grid. One was used at CHICOUTIMI, HULL, QUEBEC, SHERBROOKE and TROIS RIVIERES, with two used at MONTREAL. The same use was planned for 1930, but TROIS RIVIERES was one of the earliest offices to convert to a Perfect machine, so that it could not use a Universal die in 1930. Accordingly, 1930 use was at five offices, from six dies, MONTREAL using two and one die left unused. One die was damaged during 1930 use, so six were available in 1931, but for some reason only four were issued, use at HULL being omitted in that year and MONTREAL used only one die. By 1932 the major Quebec offices had converted to Perfect machines, requiring the issue of three Perfect dies in format B, the wording in four lines with a grid at the right.

These three dies were issued to MONTREAL, QUEBEC and TROIS RIVIERES in 1932, and three of the U dies were issued to CHICOUTIMI, HULL and THETFORD MINES, which had not yet converted to Perfect machines. Use at SHERBROOKE was omitted. This six office usage was continued in 1933-34, but in late 1934 the three U die users all converted to Perfect machines. Somewhat oddly, the sponsor was not prepared to furnish additional P dies, so use at these three offices ceased in 1935, leaving only the three original P die users, MONTREAL, QUEBEC and TROIS RIVIERES. One of the original U dies had been damaged during 1934 use, so only five U dies remained serviceable, but unused.

The three office usage continued in 1936, but in 1937 two small offices, GRAND'MERE and VALLEYFIELD, which had just received Pitney-Bowes machines that could employ U dies, were issued two of the reserve U dies. The five office usage continued in 1937-38, but very oddly the 1939 use was at MONTREAL only, although the five office usage was revived in 1940-42. However, in 1943 it was decided to employ the other three reserve U dies, which were issued to DRUMMONDVILLE, RIMOUSKI and SHAWINIGAN FALLS, all with PB machines. This expanded eight office usage continued through 1947.

In 1948 the usage was again at eight offices, but DRUMMONDVILLE and SHAWINIGAN FALLS were replaced by JONQUIERE KENOGAMI and VICTORIAVILLE. There was further replacement in 1949, DRUMMONDVILLE and SHAWINIGAN FALLS use being revived, with VALLEYFIELD and VICTORIAVILLE omitted. The 1949 eight office use was repeated in 1950-55, but by 1956 almost all Perfect machines were withdrawn, so that only the five remaining original U dies could be used. For some unknown reason all 1956 use was omitted, but in 1957 it was revived, with the five available dies used at MONTREAL, QUEBEC, RIMOUSKI, SHAWINIGAN FALLS and TROIS RIVIERES. with DRUMMONDVILLE, GRAND MERE and JONQUIERE omitted.

Although all five original U dies continued to be serviceable, one new PB die of slogan O-45 - 6475 was added in 1958. This had the same wording as slogan O-31 - 6465-A, but with the French over the English, in two lines. The addition of this die permitted use at six offices, so use at JONQUIERE was revived. The six office use was continued in 1959, although the slogan O-45 - 6475 die used in February at TROIS RIVIERES was reissued later to MONTREAL, so MONTREAL had use of two dies in 1959. It can be noted that in 1959 SHAWINIGAN FALLS changed its name to just SHAWINIGAN.

The normal six office use was repeated in 1960, but in 1961 all use was omitted. It was revived at the same six offices in 1962-64, but in 1965 three non-separable PB dies of slogan O-45 - 6475, with the wording in four lines, were added. This permitted use at nine offices, so DRUMMONDVILLE was revived, while GRANBY and ST. HYACINTHE were added.

In spite of the added dies, all use of the slogan in Quebec province ceased after 1965. However, at the request of the English sponsor, the three new dies were revived in 1972, with use at CALGARY, HALIFAX and WILLOWDALE. This revival is rather odd, since the dies had been paid for by the Catholic sponsor, and it was not normally the policy of the P.O. to let them be used by anyone other than the sponsor, but it may be that special permission was granted, since in 1972 the P.O. would not permit English only dies to be used, and the only bilingual dies available were those previously used in Quebec.

AU-01		AU-04 continued		AU-07		AU-10 continued	
1929	CALGARY	1946-47	no usage	1929	LONDON	1949-51	no usage
1930	VANCOUVER	1948	LONDON	1930	OTTAWA	1952	YORKTON
1931	VICTORIA	1949-50	no usage	1931	EDMONTON	1953-55	no usage
1932	MED. HAT	1951	COLEMAN	1932	EDMONTON	1956-57	Poss. use
1933	VANCOUVER	1952-55	no usage	1933	CALGARY	1958 1st	HALIFAX
1934	PR. RUPERT	1956	REGINA	1934	EDMONTON	1959-62	Poss. use
1935-45	no usage	1957	TORONTO	1935-45	no usage	1963	HALIFAX
1946	VANCOUVER	1958	ST. JOHN	1946	OTTAWA	1964	ST. JOHN
1947-55	no usage	1959	Poss. use	1947	no usage	1965	Poss. use
1956	TORONTO	1960	CALGARY	1948	BELLEVILLE		
1957	ST. JOHN	1961	YORKTON	1949-51	no usage		AU-11
1958	CALGARY	1962	ST. JOHN	1952	S. EDMONTON	1929	ST. JOHN
1959	REGINA	1963 1st	REGINA	1953-55	no usage	1930	CALGARY
1960	EDMONTON	1963 2nd	MOOSE JAW	1956	MOOSE JAW	1931	FREDERICTON
1961 1st	FT. WILLIAM	1964	TORONTO	1957	YORKTON	1932	VANCOUVER
1961 2nd	MOOSE JAW	1965	MOOSE JAW	1958	COLEMAN	1933	SASKATOON
1962	HALIFAX	1966	no usage	1959	TORONTO	1934	PORTAGE
1963	TORONTO	1967	TORONTO	1960	ST. JOHN	1935	MED. HAT
1964	REGINA	1968	MOOSE JAW	1961	Poss. use	1936-43	no usage
1965	REGINA	1969	EDMONTON	1962	MOOSE JAW	1944	EDMONTON
1966	no usage					1945	LONDON
1967	MOOSE JAW		AU-05		AU-08	1946	TORONTO
1968	REGINA	1929	HALIFAX	1929	MOOSE JAW	1947	no usage
1969	CALGARY	1930	LONDON	1930	FREDERICTON	1948	VANCOUVER
		1931	CALGARY	1931	CHARTOWN		
		1932	CALGARY	1932	REGINA		AU-12
1929	CHARTOWN	1933	PORTAGE	1933	MOOSE JAW	1929	SASKATOON
1930	CHARTOWN	1934	WINNIPEG	1934	CHARTOWN	1930	EDMONTON
1931	OTTAWA	1935-41	no usage			1931	LONDON
1932	PORTAGE	1942	TORONTO		AU-09	1932	NEW WEST.
1933	LETHBRIDGE	1943	no usage	1929	OTTAWA	1933	BRANDON
1934	FREDERICTON	1944	LONDON	1930	HALIFAX	1934	MED. HAT
		1945	TORONTO	1931	REGINA	1946	WINNIPEG
		1946	HAMILTON	1932	FREDERICTON	1947	no usage
1929	EDMONTON	1947	no usage	1933	EDMONTON	1948	YORKTON
1930	VICTORIA	1948	TORONTO	1934	MOOSE JAW	1949-51	no usage
1931	HALIFAX	1949-51	no usage	1935	PR. RUPERT	1952	TORONTO
1932	SASKATOON	1952	COLEMAN	1936-41	no usage	1953-54	no usage
1933	REGINA	1953	no usage	1942	OTTAWA	1955	YORKTON
1934	LETHBRIDGE	1954	TORONTO	1943	no usage	1956	EDMONTON
1935	BRANDON	1955	no usage	1944 1st	VANCOUVER	1957	Poss. use
1936-41	no usage	1956	YORKTON	1944 2nd	HAMILTON	1958	FREDERICTON
1942	HAMILTON	1957	FT. WILLIAM	1945	GALT	1959 1st	HALIFAX
1943	no usage	1958	MOOSE JAW	1946-47	no usage	1960	MOOSE JAW
1944	WINNIPEG	1959	FT. WILLIAM	1948	OTTAWA	1961	FREDERICTON
1945	HAMILTON	1960	REGINA	1949-50	no usage	1962	EDMONTON
1946-52	no usage	1961	TORONTO	1951	S. EDMONTON	1963	EDMONTON
1953	YORKTON	1962	FT. WILLIAM	1952-55	no usage	1964	EDMONTON
1954-55	no usage	1963	no usage	1956	ST. JOHN	1965	EDMONTON
1956	Poss. use	1964	YORKTON	1957	EDMONTON	1966	no usage
1957	MOOSE JAW	1965	CALGARY	1958	FT. WILLIAM	1967	CALGARY
1958	TORONTO	1966	no usage	1959	MOOSE JAW	1968	YORKTON
1959	CALGARY	1967	REGINA	1960	FT. WILLIAM	1969	ST. JOHN
1960	FREDERICTON	1968	Poss. use	1961-63	Poss. use		
1961	REGINA	1969	MOOSE JAW	1964	HALIFAX		AU-13
1962	YORKTON			1965	Poss. use	1929	TORONTO
1963	CALGARY		AU-06	1966	no usage	1930	REGINA
1964	Poss. use	1929	HAMILTON	1967-68	Poss. use	1931	HAMILTON
1965	YORKTON	1930	SASKATOON	1969	YORKTON	1932	VICTORIA
1966	no usage	1931	TORONTO			1933	WINNIPEG
1967	Poss. use	1932	LETHBRIDGE		AU-10	1934	VICTORIA
1968	YORKTON	1933	VICTORIA	1929	REGINA	1935-43	no usage
		1934	REGINA	1930	MOOSE JAW	1944	OTTAWA
		1935-43	no usage	1931	SASKATOON		
1929	FREDERICTON	1944 1st	HAMILTON	1932	CHARTOWN		AU-14
1930	HAMILTON	1945	no usage	1933	MED. HAT	1929	VANCOUVER
1931	MOOSE JAW	1946	LONDON	1934	BRANDON	1930	ST. JOHN
1932	WINNIPEG	1947	no usage	1935	PORTAGE	1931	VANCOUVER
1933	PR. RUPERT	1948	WINNIPEG	1936-43	no usage	1932	BRANDON
1934	VANCOUVER	1949-54	no usage	1944	TORONTO	1933	FREDERICTON
1935-44	no usage	1955	TORONTO	1945	CHATHAM	1934	NEW WEST.
1945	OTTAWA	1956	FREDERICTON	1946	GALT	1945	VANCOUVER
		1957	REGINA	1947	no usage	1946-47	no usage
		1958	Poss. use	1948	VICTORIA		
		1959	EDMONTON				

1948	AU-14 continued S. EDMONTON	1932	BP-1 HALIFAX	BP-5 1932	ST. JOHN	1935	CP-4 WINNIPEG
1949-55	no usage	1933	HALIFAX	1933	TORONTO	1936	REGINA
1956	HALIFAX	1934	HALIFAX	1934	HAMILTON	1937	REGINA
	Retained to Dec.	1935	HAMILTON	1935	OTTAWA	1938	HALIFAX
1957	HALIFAX	1936	ST. JOHN	1936	FREDERICTON	1939-41	no usage
1958 2nd	HALIFAX	1937	TORONTO	1937	WINNIPEG	1942	EDMONTON
1959 2nd	HALIFAX	1938	LONDON	1938	OTTAWA	1943-47	no usage
	Retained to Dec.	1939-41	no usage	1942	ST. JOHN	1948	CALGARY
1960	HALIFAX	1942	HALIFAX	1944	no usage	1949-51	no usage
	Retained to Dec.	1943	no usage	1945	REGINA	1952	CALGARY
1961	HALIFAX	1944	FREDERICTON	1946-47	no usage	1953-54	Poss. use
	Jan. use only	1945	S. EDMONTON	1948	MOOSE JAW	1955	CALGARY
1962	TORONTO	1946	REGINA				
1963	FT. WILLIAM	1947-50	no usage	BP-6			DP-1
1964-65	Poss. use	1951	ST. JOHN	1932	TORONTO	1936	HAMILTON
1966	no usage	1952	FREDERICTON	1933	HAMILTON	1937	OTTAWA
1967	EDMONTON	1953-54	Poss. use	1934	ST. JOHN	1938	EDMONTON
1968	CALGARY	1955	FT. WILLIAM	1935	ST. JOHN	1939-41	no usage
1969	HALIFAX			1936	CHARTOWN	1942	REGINA
			BP-2	1937	HALIFAX	1943	no usage
	AU-15	1932	HAMILTON	1938	CALGARY	1944	CALGARY
1929	VICTORIA	1933	OTTAWA	1939-41	no usage	1945	no usage
1930	TORONTO	1934	TORONTO	1942	WINNIPEG	1946	ST. JOHN
1931	ST. JOHN	1935	LONDON	1943-44	no usage		
1932	PR. RUPERT	1936	SASKATOON	1945	FREDERICTON		DP-2
1933	NEW WEST.	1937	LONDON	1946	no usage	1936	LONDON
1934	SASKATOON	1938	SASKATOON			1937	HAMILTON
1945	WINNIPEG	1939-43	no usage		CP-1	1938	ST. JOHN
1946-47	no usage	1944	REGINA	1935	CALGARY	1939-41	no usage
1948	EDMONTON	1945	no usage	1936	CALGARY	1942	CHARTOWN
1949-50	no usage	1946	YORKTON	1937	CALGARY	1943-44	no usage
1951	YORKTON	1947	no usage	1938	REGINA	1945	YORKTON
1952-55	no usage	1948	REGINA	1939-41	no usage	1946	HALIFAX
1956	Poss. use	1949-50	no usage	1942	LONDON	1947-51	no usage
1957	FREDERICTON	1951	FT. WILLIAM	1943	no usage	1952-53	Poss. use
1958	Poss. use	1952	Poss. use	1944	ST. JOHN	1954	FREDERICTON
1959	ST. JOHN	1953	MOOSE JAW	1945	FT. WILLIAM	1955	Poss. use
1960	YORKTON	1954	Poss. use	1946-47	no usage		
1961	CALGARY	1955	FREDERICTON	1948	FT. WILLIAM		DP-3
1962	REGINA			1949-51	no usage	1936	OTTAWA
1963	YORKTON		BP-3	1952	Poss. use	1937	FREDERICTON
1964	Poss. use			1953	FT. WILLIAM	1938	WINNIPEG
1965	TORONTO	1932	LONDON	1954	HALIFAX	1939-41	no usage
1966	no usage	1933	LONDON	1955	HALIFAX	1942	VANCOUVER
1967	YORKTON	1934	OTTAWA			1943	no usage
1968	EDMONTON	1935	HALIFAX		CP-2	1944	GALT
1969	REGINA	1936	HALIFAX	1935	REGINA	1945	no usage
		1937	CHARTOWN	1936	EDMONTON	1946	FT. WILLIAM
	AU-16	1938	HAMILTON	1937	VANCOUVER	1947-50	no usage
1929	WINNIPEG	1939-41	no usage	1938	FREDERICTON	1951	HALIFAX
1930	WINNIPEG	1942	SASKATOON	1939-41	no usage	1952	ST. JOHN
1931	WINNIPEG	1943-45	Unused or	1942	CALGARY	1954	ST. JOHN
1932	MOOSE JAW	1946	FREDERICTON	1943	no usage	1955	Poss. use
1933	CHARTOWN	1948-50	no usage	1944	HALIFAX		
1934	CALGARY	1951	MOOSE JAW	1945	CALGARY		DP-4
1935-43	no usage	1952	HALIFAX	1946	no usage		
1944	CHATHAM			1948	ST. JOHN	1936	TORONTO
1945	no usage		BP-4	1949-51	no usage	1937	SASKATOON
1946	CHATHAM	1932	OTTAWA	1952	MOOSE JAW	1938	TORONTO
1947-50	no usage	1933	ST. JOHN	1953-54	Poss. use	1939-43	no usage
1951	TORONTO	1934	LONDON	1955	REGINA	1944	CHARTOWN
1952-55	no usage	1935	TORONTO			1945	ST. JOHN
1956	FT. WILLIAM	1936	WINNIPEG		CP-3	1946-47	no usage
1957	COLEMAN	1937	ST. JOHN	1935	VANCOUVER	1948	HALIFAX
1958	EDMONTON	1938	VANCOUVER	1936	VANCOUVER	1949-50	no usage
1959	FREDERICTON	1939-43	no usage	1937	EDMONTON	1951	FREDERICTON
1960	TORONTO	1944	SASKATOON	1938	CHARTOWN	1952	FT. WILLIAM
1961	ST. JOHN	1945	no usage	1939-41	no usage		
1962	CALGARY	1946	CALGARY	1942 1st	FREDERICTON		
1963	Poss. use	1947-50	no usage	1942 2nd	GALT		
1964	MOOSE JAW	1951	CALGARY	1943-44	no usage		
1965	HALIFAX			1945	HALIFAX		
1966	no usage			1946-50	no usage		
1967	Poss. use			1951	REGINA		
1968	TORONTO			1952	REGINA		
1969	TORONTO			1953	HALIFAX		
				1954-55	Poss. use		

BELLEVILLE		COLEMAN		FREDERICTON		HALIFAX continued		MOOSE JAW	
1948	AU-07	1951	AU-04	1929	AU-04	1957	AU-14	1929	AU-08
		1952	AU-05	1930	AU-08	1958	AU-10 1st	1930	AU-10
BRANDON		1953	AU-7	1931	AU-11	1958	AU-14 2nd	1931	AU-04
		1954	AU-7	1932	AU-09	1959	AU-12 1st	1932	AU-16
1932	AU-14	1955	AU-7	1933	AU-14	1959	AU-14 2nd	1933	AU-08
1933	AU-12	1956	AU-7	1934	AU-02	Retained to Dec.		1934	AU-09
1934	AU-10	1957	AU-16	1935	Prob.	1960	AU-14	1935-47	No usage
1935	AU-03	1958	AU-07	1936	BP-5	Retained to Dec.		1948	BP-5
		1959	AU-7	1937	DP-3	1961	AU-14	1949-50	No usage
CALGARY				1938	CP-2	Seen from Jan.		1951	BP-3
		EDMONTON		1939-41	No usage	1962	AU-01	1952	CP-2
1929	AU-01	1929	AU-03	1942	CP-3 1st	1963	AU-10	1953	BP-2
1930	AU-11	1930	AU-12	1943	No usage	1964	AU-09	1954	?P-7
1931	AU-05	1931	AU-07	1944	BP-1	1965	AU-16	1955	?P-7
1932	AU-05	1932	AU-07	1945	BP-6	1966	No usage	1956	AU-07
1933	AU-07	1933	AU-09	1946	BP-3	1967	AU-7	1957	AU-03
1934	AU-16	1934	AU-07	1947	No usage	1968	AU-7	1958	AU-05
1935	CP-1	1935	AU-07	1948	?P-7	1969	AU-14	1959	AU-09
1936	CP-1	1936	Prob.	1949-50	No usage			1960	AU-12
1937	CP-1	1936	CP-2	1951	DP-4	HAMILTON		1961	AU-01 2nd
1938	BP-6	1937	CP-3	1952	BP-1			1962	AU-07
1939-41	No usage	1938	DP-1	1953	?P-7	1929	AU-06	1963	AU-04 2nd
1942	CP-2	1939-41	No usage	1954	DP-2	1930	AU-04	1964	AU-16
1943	No usage	1942	CP-4	1955	BP-2	1931	AU-13	1965	AU-04
1944	DP-1	1943	No usage	1956	AU-06	1932	BP-2	1966	No usage
1945	CP-2	1944	AU-11	1957	AU-15	1933	BP-6	1967	AU-01
1946	BP-4	1944	AU-11	1957	AU-15	1934	BP-5	1968	AU-04
1947	No usage	1945	No usage	1958	AU-12	1935	BP-1	1969	AU-05
1948	CP-4	1946	AU-7	1959	AU-16	1936	DP-1		
1949-50	No usage	1947	No usage	1960	AU-03	1937	DP-2		
1951	BP-4	1948	AU-15	1961	AU-12	1938	BP-3	NEW WESTMINSTER	
1952	CP-4	1949-55	No usage			1939-41	No usage	1932	AU-12
1953	?P-7	1956	AU-12	GALT		1942	AU-03	1933	AU-15
1954	?P-7	1957	AU-09	1942	CP-3 2nd	1943	No usage	1934	AU-14
1955	CP-4	1958	AU-16	1943	No usage	1944	AU-06 1st		
1956	AU-7	1959	AU-06	1944	DP-3	1944	AU-09 2nd		
1957	AU-7	1960	AU-01	1945	AU-09	1945	AU-03	OTTAWA	
1958	AU-01	1961	AU-7	1946	AU-10	1946	AU-05		
1959	AU-03	1962	AU-12					1929	AU-09
1960	AU-04	1963	AU-12					1930	AU-07
1961	AU-15	1964	AU-12	HALIFAX				1931	AU-02
1962	AU-16	1965	AU-12	1929	AU-05	1932	AU-06	1932	BP-4
1963	AU-03	1966	No usage	1930	AU-09	1933	AU-02	1933	BP-2
1964	AU-7	1967	AU-14	1931	AU-03	1934	AU-03	1934	BP-3
1965	AU-05	1968	AU-15	1932	BP-1			1935	BP-5
1966	No usage	1969	AU-04	1933	BP-1	LONDON		1936	DP-3
1967	AU-12			1934	BP-1			1937	DP-1
1968	AU-14	FORT WILLIAM		1935	BP-3	1929	AU-07	1938	BP-5
1969	AU-01	1945	CP-1	1936	BP-3	1930	AU-05	1939-41	No usage
		1946	DP-3	1937	BP-6	1931	AU-12	1942	AU-09
CHARLOTTETOWN		1947	No usage	1938	CP-4	1932	BP-3	1943	AU-13
		1948	CP-1	1939-41	No usage	1933	BP-3	1944	No usage
1929	AU-02	1949-50	No usage	1942	BP-1	1934	BP-4	1945	AU-04
1930	AU-02	1951	BP-2	1943	No usage	1935	BP-2	1946	AU-07
1931	AU-08	1952	DP-4	1944	CP-2	1936	DP-2	1947	No usage
1932	AU-10	1953	CP-1	1945	CP-3	1937	BP-2	1948	AU-09
1933	AU-16	1954	?P-7	1946	DP-2	1938	BP-1		
1934	AU-08	1955	BP-1	1947	No usage	1939-41	No usage	PORTAGE LA PRAIRIE	
1935	Prob.	1956	AU-16	1948	DP-4	1942	CP-1		
1936	BP-6	1957	AU-05	1949-50	No usage	1943	No usage	1932	AU-02
1937	BP-3	1958	AU-09	1951	DP-3	1944	AU-05	1933	AU-05
1938	CP-3	1959	AU-05	1952	BP-3	1945	AU-11	1934	AU-11
1939-41	No usage	1960	AU-09	1953	CP-3	1946	AU-06	1935	AU-10
1942	DP-2	1961	AU-01 1st	1954	CP-1	1947	No usage		
1943	No usage	1962	AU-05	1955	CP-1	1948	AU-04	PRINCE RUPERT	
1944	DP-4	1963	AU-14	1956	AU-14			1932	AU-15
CHATHAM				Retained to Dec. continued		MEDICINE HAT		1933	AU-04
						1932	AU-01	1934	AU-01
1944	AU-16					1933	AU-10	1935	AU-09
1945	AU-10					1934	AU-12		
1946	AU-16					1935	AU-11		

REGINA

1929 AU-10
 1930 AU-13
 1931 AU-09
 1932 AU-08
 1933 AU-03
 1934 AU-06
 1935 CP-2
 1936 CP-4
 1937 CP-4
 1938 CP-1
 1939-41 No usage
 1942 DP-1
 1943 No usage
 1944 BP-2
 1945 BP-5
 1946 BP-1
 1947 No usage
 1948 BP-2
 1949-50 No usage
 1951 CP-3
 1952 CP-3
 1953 ?P-7
 1954 ?P-7
 1955 CP-2
 1956 AU-04
 1957 AU-06
 1958 AU-7
 1959 AU-01
 1960 AU-05
 1961 AU-03
 1962 AU-15
 1963 AU-04 1st
 1964 AU-01
 1965 AU-01
 1966 No usage
 1967 AU-05
 1968 AU-01
 1969 AU-15

ST. JOHN

1929 AU-11
 1930 AU-14
 1931 AU-15
 1932 BP-5
 1933 BP-4
 1934 BP-6
 1935 BP-6
 1936 BP-1
 1937 BP-4
 1938 DP-2
 1939-41 No usage
 1942 BP-5
 1943 No usage
 1944 CP-1
 1945 DP-4
 1946 DP-1
 1947 No usage
 1948 CP-2
 1949-50 No usage
 1951 BP-1
 1952 DP-3
 1953 ?P-7
 1954 DP-3
 1955 ?P-7
 1956 AU-09
 1957 AU-01
 1958 AU-04
 1959 AU-15
 1960 AU-07
 1961 AU-16
 1962 AU-04
 1963 AU-7
 1964 AU-10
 1965 AU-7
 1966 No usage
 1967 AU-7
 1968 AU-7
 1969 AU-12

SASKATOON

1929 AU-12
 1930 AU-06
 1931 AU-10
 1932 AU-03
 1933 AU-11
 1934 AU-15
 1935 Prob.
 1936 BP-2
 1937 DP-4
 1938 BP-2
 1939-41 No usage
 1942 BP-3
 1943 No usage
 1944 BP-4
 SOUTH EDMONTON
 1945 BP-1
 1946-47 No usage
 1948 AU-14
 1949-50 No usage
 1951 AU-09
 1952 AU-07

TORONTO

1929 AU-13
 1930 AU-15
 1931 AU-06
 1932 BP-6
 1933 BP-5
 1934 BP-2
 1935 BP-4
 1936 DP-4
 1937 BP-1
 1938 DP-4
 1939-41 No usage
 1942 AU-05
 1943 No usage
 1944 AU-10
 1945 AU-05
 1946 AU-11
 1947 No usage
 1948 AU-05
 1949-50 No usage
 1951 AU-16
 1952 AU-12
 1953 AU-7
 1954 AU-05
 1955 AU-06
 1956 AU-01
 1957 AU-04
 1958 AU-03
 1959 AU-07
 1960 AU-16
 1961 AU-05
 1962 AU-14
 1963 AU-01
 1964 AU-04
 1965 AU-15
 1966 No usage
 1967 AU-04
 1968 AU-16
 1969 AU-16
 VANCOUVER
 1929 AU-14
 1930 AU-01
 1931 AU-14
 1932 AU-11
 1933 AU-01
 1934 AU-04
 1935 CP-3
 1936 CP-3
 1937 CP-2
 1938 BP-4
 1939-41 No usage
 1942 DP-3
 1943 No usage
 1944 AU-09 1st
 1945 AU-14
 1946 AU-01
 1947 No usage
 1948 AU-11

VICTORIA

1929 AU-15
 1930 AU-03
 1931 AU-01
 1932 AU-13
 1933 AU-06
 1934 AU-13
 1935-47 No usage
 1948 AU-10

WINNIPEG

1929 AU-16
 1930 AU-16
 1931 AU-16
 1932 AU-04
 1933 AU-13
 1934 AU-05
 1935 CP-4
 1936 BP-4
 1937 BP-5
 1938 DP-3
 1939-41 No usage
 1942 BP-6
 1943 No usage
 1944 AU-03
 1945 AU-15
 1946 AU-12
 1947 No usage
 1948 AU-06

YORKTON

1945 DP-2
 1946 BP-2
 1947 No usage
 1948 AU-12
 1949-50 No usage
 1951 AU-15
 1952 AU-10
 1953 AU-03
 1954 AU-7
 1955 AU-12
 1956 AU-05
 1957 AU-07
 1958 AU-7
 1959 AU-7
 1960 AU-15
 1961 AU-04
 1962 AU-03
 1963 AU-15
 1964 AU-05
 1965 AU-03
 1966 No usage
 1967 AU-15
 1968 AU-03
 1969 AU-09

CALGARY		JONQUIERE KENOGAMI		QUEBEC		RIMOUSKI continued		TROIS RIVIERES	
1972	6475 - PB 2-4	1948	AU-7	Black-out dater in 1943-45		1958	AU-7	1929	AU-6
		1949	AU-5			1959	AU-1	1930-31	No usage
CHICOUTIMI		1950	AU-7	1929	AU-2	1960	AU-6	1932	BP-2
		1951	AU-3	1930	AU-2	1961	No usage	1933	BP-2
1929	AU-5	1952	AU-6	1931	AU-1	1962	6475 - PB-1	1934	BP-1
1930	AU-1	1953	AU-3	1932	BP-1	1963	AU-5	1935	BP-2
1931	AU-2	1954	AU-7	1933	BP-1	1964	6475 - PB-1	1936	BP-2
1932	AU-1	1955	AU-7	1934	BP-3	1965	AU-7	1937	BP-2
1933	AU-6	1956-57	No usage	1935	BP-1			1938	BP-2
1934	AU-7	1958	AU-7	1936	BP-1	ST. HYACINTHE		1939	No usage
		1959	AU-3	1937	BP-1			1940	BP-2
DRUMMONDVILLE		1960	AU-1	1938	BP-1	1965	6475 - PB 2-4	1941	BP-3
		1961	No usage	1939	No usage			1942	BP-1
1943	AU-5	1962	AU-3	1940	BP-3	SHAWINIGAN FALLS		1943	BP-3
1944	AU-7	1963	AU-3	1941	BP-2			1944	BP-3
1945	AU-5	1964	AU-7	1942	BP-3	1943	AU-3	1945	BP-1
1946	AU-7	1965	6475 - PB-1	1943	BP-2	1944	AU-6	1946	BP-1
1947	AU-6			1944	BP-1	1945	AU-1	1947	BP-2
1948	No usage	MONTREAL		1945	BP-3	1946	AU-3	1948	BP-2
1949	AU-3	1929	AU-1	1946	BP-2	1947	AU-3	1949	BP-1
1950	AU-3	1929	AU-3	1947	BP-1	1948	No usage	1950	BP-1
1951	AU-6	1930	AU-5	1948	BP-3	1949	AU-1	1951	BP-2
1952	AU-3	1930	UA-6	1949	BP-3	1950	AU-5	1952	BP-3
1957-64	No usage	1930	UA-6	1950	BP-3	1951	AU-7	1953	BP-1
1965	6475 - PB 2-4	1931	AU-3	1951	BP-3	1952	AU-5	1954	BP-2
		1932	BP-3	1952	BP-2	1953	AU-1	1955	BP-2
GRANBY		1933	BP-3	1953	BP-2	1954	AU-7	1956	No usage
		1934	BP-2	1954	BP-3	1955	AU-7	1957	AU-7
1965	6475 - PB 2-4	1935	BP-3	1955	BP-3	1956	No usage	1958	6475 - PB-1
		1936	BP-3	1956	No usage	1957	AU-1	1959	6475 - PB-1
GRAND MERE		1937	BP-3	1957	AU-5	1958	AU-7	Feb. use, followed by	
		1938	BP-3	1958	AU-5	Name changed to		MONTREAL use in May	
1937	AU-6	1939	BP-2	1959	AU-5	SHAWINIGAN		1960	6475 - PB-1
1938	AU-6	1940	BP-1	1960	AU-5	1959	AU-6	1961	No usage
1939	No usage	1941	BP-1	1961	No usage	1960	AU-3	1962	AU-5
1940	AU-3	1942	BP-2	1962	AU-6	1961	No usage	1963	AU-7
1941	AU-3	1943	BP-1	1963	AU-6	1962	AU-7	1964	AU-3
1942	AU-3	1944	BP-2	1964	AU-6	1963	6475 - PB-1	1965	AU-5
1943	AU-7	1945	BP-2	1965	AU-7	1964	AU-1		
1944	AU-1	1946	BP-3			1965	AU-7	VALLEYFIELD	
1945	AU-7	1947	BP-3	RIMOUSKI				1937	AU-3
1946	AU-5	1948	BP-1			SHERBROOKE		1938	AU-3
1947	AU-1	1949	BP-2	Black-out dater in 1943-45		1929	AU-7	1939	No usage
1948	AU-6	1950	BP-2	1943	AU-6	1930	AU-7	1940	AU-6
1949	AU-6	1951	BP-1	1944	AU-3	1931	AU-7	1941	AU-6
1950	AU-6	1952	BP-1	1945	AU-6			1942	AU-6
1951	AU-1	1953	BP-3	1946	AU-6	THETFORD MINES		1943	AU-1
1952	AU-7	1954	BP-1	1947	AU-5	1932	AU-3	1944	AU-5
1953	AU-7	1955	BP-1	1948	AU-5	1933	AU-7	1945	AU-3
1954	AU-7	1956	No usage	1949	AU-7	1934	AU-1	1946	AU-1
1955	AU-7	1957	AU-7	1950	AU-1			1947	AU-7
HALIFAX		1958	AU-7	1951	AU-5			1948	AU-1
		1959	AU-7	1952	AU-1				
1972	6475 - PB 2-4	Feb. use		1953	AU-7			VICTORIAVILLE	
		1959	6475 - PB-1	1954	AU-7			1948	AU-3
HULL		May use, received from TROIS RIVIERES		1955	AU-7				
		1960	AU-7	1956	No usage			WILLOWDALE	
1929	AU-4	1961	No usage	1957	AU-7			1972	6475 - PB 2-4
1930	AU-4	1962	AU-1	continued					
1931	No usage	1963	AU-1						
1932	AU-6	1964	AU-5						
1933	AU-2	1965	AU-7						
1934	AU-5								

Douglas Lingard has recently made an amazing discovery, a 1939 slogan use that has never before been reported. This is an Old Boys Reunion from NEWMARKET, dated June 3, 1939, unfortunately with the dates unclear, but almost all reunions of this sort were held around either July 1 or August 1. The interesting point about this slogan is that it was used on a Columbia machine, which probably accounts for its rarity and the failure to have discovered it previously.

There was some usage of Columbia machines in Canada from 1919 into the 1920's, but very little thereafter. However, KENORA still had a Columbia in 1931, and a request was made for a slogan advertising the completion of the Trans Canada Highway from Winnipeg to the Ontario boundary at Kenora. The P.O. replied in part, "As regards using the die at Kenora, we understand that the canceling machine at that point is Columbia, and dies for the Columbia machines cost considerably more than for the Universal machines, and it usually takes several weeks to procure same from the manufacturers in the United States." As a result of this, a Universal die was used at WINNIPEG, with not use at KENORA.

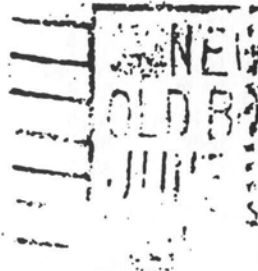
This suggests that Pritchard & Andrews, for many decades the sole supplier of Canadian slogan dies, either could not or would not manufacture dies for Columbias, so their usage was very restricted, and such few as there were do not appear in the P.O. proof book, so the use of this die was never documented

The earliest report of a NEWMARKET Pitney-Bowes machine is not until 1950, and the daters then in use give the office name as one word, but it will be noted that the dater of this slogan appears to read NEW MARKET.

A somewhat enlarged photocopy appears below.

COLUMBIA MACHINE

FROM DOUG LINGARD



OPERATING CORPORATION
LIMITED.

DUNDAS SQUARE

TORONTO 2, ONT.

NEWMARKET
OLD BOYS REUNION
JUNE - - - -
- - - -

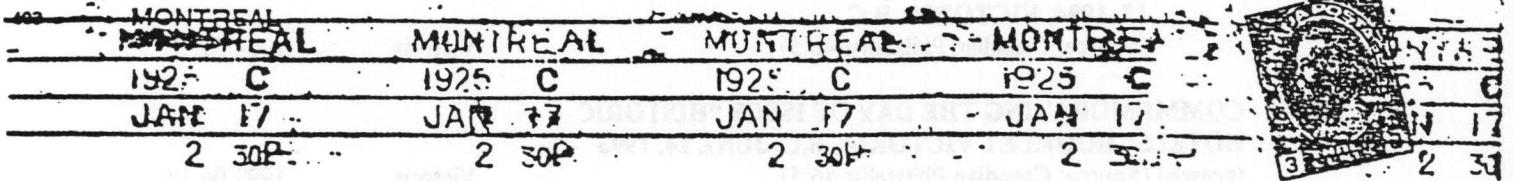
4 LINES?
=

Date of the
Reunion is
not clear

Receipt of the information regarding the NEW MARKET slogan has reminded the Editor that he had also received from Lingard, although some time ago, a photocopy of another most unusual slogan. It has been established that a J.O. Lamoureux had invented and patented a postal cancel machine in the early 1920's, and as early as 1922 had received Post Office permission to instal a machine at the Montreal P.O. for experimental trials. These trials appear to have been unsatisfactory, but in 1925 Lamoureux again requested a trial of a new and improved machine.

Examples of the results of these trials have been seen, dated in early 1925, showing a repeating combined dater and obliterator that appear to have come from a hand operated experimental machine located at the Montreal sub-station C, reported as seen with the dates of January 12 and January 17, 1925, and an example is illustrated below.

TIONAL MILLERS' ASSOCIATION



Mr. R. A. Thompson,
LYNDEN,
ONT.

Further trials followed with an electric machine at the Montreal Main Office in late November of 1925, and on December 1st and 3rd examples have been seen of the same type of cancel, but with a slogan inserted between the repeated daters. This reads,, "CANADIAN GOODS ARE BEST", and may have been inspired by a Newfoundland slogan first issued in 1921, reading "BUY MADE IN NEWFOUNDLAND GOODS". A December 1ST, 1925 example is illustrated below.

CROWN TRUST COMPANY

EXECUTORS - TRUSTEES - AGENTS

MONTREAL

1925

MONTREAL ——— MONTREAL
DEC 1 1925 CANADIAN GOODS — DEC
· 6 P.M. — ARE BEST —
· — P.Q. — ———



The 1925 trials do not appear to have satisfied the P.O., but Lamoureux persisted and further trials were undertaken in 1927, which resulted in a contract to purchase an eventual 132 Perfect machines that, beginning in late 1929, replaced all Canadian used Universal machines during the period 1930-37.

SLOGAN, COMMEMORATIVE AND PICTORIAL HAND STAMPS

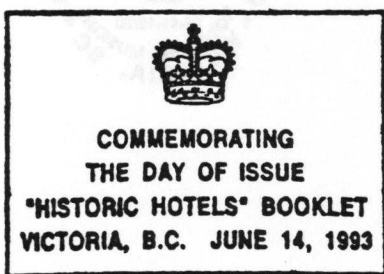
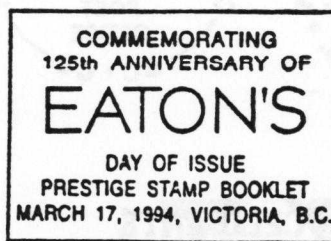
Steven A. Friedenthal

The following are additional hand stamp slogan, commemorative and pictorial post marks that I have found or have had referred to me since the last issue of the *Slogan Box*.

HA-	Ancaster Fair Sept 23 & 24 (Source: Street, Slogan Box #12)	Ancaster	1913 09 15
HA-	APPLE HARVEST '94 (apple) (Source: Canadian Philatelist 46:5)	Veradale, Wa	1994 09 23/25
HC-	COMMEMORATING 125TH ANNIVERSARY OF EATON'S DAY OF ISSUE PRESTIGE STAMP BOOKLET MARCH 17, 1994, VICTORIA, B.C. (Source: Canadian Philatelist 46:5)	Victoria	1994 03 17
HC-	COMMEMORATING THE DAY OF ISSUE "HISTORIC HOTELS" BOOKLET VICTORIA, B.C. JUNE 14, 1993 (crown) (Source: Canadian Philatelist 46:5)	Victoria	1993 06 14
HE-	EATON'S (Source: Canadian Philatelist 46:5)	Victoria	1994 03 17
HE	Exposition-Gatineau-Exhibition a at Maniwaki, 24-25 Sept. Voir demonsration postale See Postal Exhibit. (Source: Slogan Box #15)	River Des ?	1924 08 22
HE-	Exposition Provinciale de Quebec Demonstration Postale. Postal Exhibit. Quebec Provincial Exhibition (maple leaf) (Source: Slogan Box #18)	Quebec	1927 09 07
HL-	LUCAN 125 1871-1996 (clover leaves) (Source: Canadian Philatelist 47:4)	Lucan	1996 06 22
HN-	NWFSC PIPEX '94 94-5-27/29 (Source: Canadian Philatelist 46:5)	Eugene, Or.	1994 05 27-29
HO-	OCTOBER IS STAMP MONTH [bilingual] STAMP FAIR, ROYAL BC MUSEUM VICTORIA, BC OCT. 16-17, 1993 (dinosaur on stamp, maple leaf, cancel) (Source: Canadian Philatelist 46:5)	Victoria	1993 10 16-17
HO-	OCTOBER EST LE MOIS DE LA PHILATELIE [bilingual] STAMP FAIR, ROYAL BC MUSEUM VICTORIA, BC OCT 29-30, 1994 (mammoth on stamp, maple leaf, cancel) (Source: Canadian Philatelist 46:5)	Victoria	1994,10 29-30
HO-	100th Birthday Mme. De Tremaudan (Source: Canadian Philatelist 47:4)	Victoria	1996 04 28
HR-	ROYAL BC MUSEUM 93-10-16/17 (dinosaur on stamp, maple leaf and cancel) (Source: Canadian Philatelist 46:5)	Victoria	1993 10 16-17
HR-	ROYAL BC MUSEUM 94-10-29/30 (mammoth on stamp, maple leaf and cancel) (Source: Canadian Philatelist 46:5)	Victoria	1994 10 29-30
HS-	75TH ANNIVERSARY FIRST AIRMAIL FLIGHT VANCOUVER SEATTLE (Source: Canadian Philatelist 46:5)	Vancouver	1994 03 03
HS-	75TH ANNIVERSARY VANPEX (Source: Canadian Philatelist 46:5)	Vancouver	1994 11 06

HT-	The Empress (crown) (Source: Canadian Philatelist 46:5)	Victoria	1993 06 14
HT-	THE DISCOVERY TRAIN (locomotive on maple leaf)	Kelowna	1979 06 20
HT-	TRAVELING POST OFFICE (Canada Post symbol) (Source: Canadian Philatelist 46:5)	?	1994 12 03 - 30
HV-	VICPEX (map of Vancouver island)	Victoria	1994 10 01
HV-	VICTOPICAL (map of Vancouver island) (Source: Canadian Philatelist 46:5)	Victoria	1994 09 20
HW-	WE CELEBRATE IN 58 (Source: Slogan Box #15)	Fort Simpson	1958 09 24
HW-	WORLD AIDS DAY (ribbon) (Source: Canadian Philatelist 46:5)	Vancouver	1994 12 01
HW-	WORLD OF AMATEUR RADIO ROYAL BC MUSEUM (globe and lightening bolt) (Source: Canadian Philatelist 46:5)	Victoria	1994 11 19-20

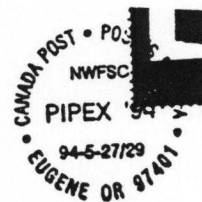
Additional hand stamps sent by members since the last issue, but too late to be placed in this issue, will be shown in the next issue of the *Slogan Box*.



Exposition - Gatineau - ??
 at Maniwaki, 24-25 Sept.
 Voir démonstration postale
 See Postal Exhibit.

125% enlargement

Exposition Provinciale de Québec
 démonstration postale
 Québec Provincial Exhibition
 Postal Exhibit.





STAMP FAIR, ROYAL BC MUSEUM
VICTORIA, BC OCT. 16-17, 1993



STAMP FAIR, ROYAL BC MUSEUM
VICTORIA, BC OCT. 29 - 30, 1994



Please note: Discovery Train
Show # 44