

Postal Stationery Notes

Happy New Year from PSSG!

This issue was scheduled for the end of 2011, and we apologize for the delay. Under the circumstances, it gives us the opportunity to wish you all the very best for the New Year.

DUES reminder! If you have not already sent your dues for the upcoming volume of PSNotes, please do so. Checks should be made out to John Grace, at 734 Aspen Rd Pickering ON, L1V 4H2. If you would prefer to pay via Paypal, you may do so by going to Paypal and making a payment to jpg1353@yahoo.com for \$8.00.

SELF-GENERATED POST CARD UPDATE

We have noticed an improvement in the quality of the stock – a glossier surfacing that seems to protect the picture side from those unpleasant blemishes on the pictures.

As for the numbers at lower left - the first number is the printing batch number and the second number is the individual order number. The largest printing number I have so far is 95. From May 15 to Dec 15 there have been roughly 214 days (minus 60 weekend days and 6 more Statutory holidays when they didn't print), leaving 148 days of which they apparently printed on 95 of them.

ECover

SANTA CLAUS PARADE CARDS

– Mike Street pointed out early in December that the Rick Mercer Report showed Rick as a clown, in the Toronto Santa Claus parade, passing out cards to write to Santa. I was subsequently told by the Toronto Santa Claus Parade that the cards were provided by CPC and Santa "will reply to everyone who writes him." The 4 different Santa cards that I have seen are bilingual on the picture side



Fig. 1: Free Santa cards from the Toronto Santa Claus Parade.

but English on the address/message side. They are "No Postage Required" and not postal stationery as we had looked for. Members of Parliament and Santa have free franks in Canada so a preprinted frank is unnecessary for mail sent to H0H 0H0.

Earle Covert

~*****~ ☒☒☒ ~*****~

PSNotes Contact information: Chairman: Earle L. Covert, ecovert@telusplanet.net, Box 1190, Raymond, AB T0K 2S0, phone 403-752-4548. For articles, news or reports: John Grace, our Secretary-Treasurer, and contact person for the study group (jpg1353@yahoo.com, 734 Aspen Rd Pickering ON, L1V 4H2), and Jean Walton (jwalton971@aol.com, or PSSG@comcast.net, 125 Turtleback Rd, Califon NJ 07830), layout/copy editor for Postal Stationery Notes.

Emailed copy of PSNotes: To receive PSNotes in colour in pdf format, send your email to John Grace at jpg1353@yahoo.com. It's free! If you prefer this version to the mailed version and ONLY want the online version, let us know and we will remove you from the mailing list for Canada Post copies. But you do not need to choose – you can continue to receive both.

ADVERTING ON POSTAL STATIONERY CARDS

Adri Veenstra

Adri Veenstra sends along the following: "In the July 2011 issue of *Postal Stationery Notes* Pierre Gauthier asked for examples of Canada Post Ads on illustrated postal stationery. I have attached 2 examples of these cards issued for the Amphilex, the Dutch World Philatelic Exhibition, held August 30 to September 3 2002 in Amsterdam." It is very interesting that CPC has a database of Canadian collectors overseas sufficient to warrant such a mailing!



Fig. 1: Sent from Canada Post advertising to collectors in the Netherlands with Canadian interests, their presence at the AMPHILEX 2002 show, held Aug. 30-Sept. 3, 2002 – presenting this card earns the bearer a free First Day cancelled Tulip card.

Both of these cards were cancelled (and mailed?) in Toronto on Aug. ?, 2002. One shows an Ottawa First Day cancel with windmill from Ottawa on August 30; the other shows a Show cancel.

ANNOUNCEMENT!

Dick Staecker's collection of postal stationery and duplicates now is at Maresch in Toronto and will be in the February auction. For a free copy of the catalogue, call 416 363 7777, Fax 416-363-6511 or ask with an e-mail from the website www.maresch.com.

NEW OFFICIAL ENVELOPE

Earle Covert

In December 2011, a card arrived in my mail and I said, "Good, Canada Post is using a stamp on their mail." Suddenly, on second look, it dawned on me that it was actually postal stationery. It was a side seam envelope, 184 x 134 mm. The stamp design is the same as the letters used for Santa's replies to the estimated 1.3 million letters to Santa at Christmas 2011.

The letter was sent to VentureOne customers. VentureOne is a free card available to customers with businesses. You register with Canada Post Corporation and get a card with a number which entitles the business owner to a 5% discount of certain mailings- mainly parcels. It also puts you on a CPC mailing list for promotions about 6 to 8 times a year. The enclosed card has a design on the front made up of VentureOne cards.

It has been confirmed by CPC that the envelope and card exist in a French version. I am still trying to find one.



Fig. 1: New official envelope, used by Canada Post to its VentureOne customers. Insets show indicia enlarged and darkened to show simulated perfs, and, at right, an enlargement of the corner card. Size: 184x134 mm.



Fig. 2: The enclosed greeting card, with front design made up of simulated VentureOne cards.

~*****~ ☒☒☒ ~*****~

What's New in Postal Stationery

Envelopes (new printing date)

Fishing Flies #8 12.12.10 (10 different)
 Fishing Flies #8 6.6.11 (10 different)
 Orchids and Gardens #8 6.6.11 (8 different)

The #8 12.12.10 Fishing Fly envelopes may prove elusive, as stock from the 6.6.11 printing already is available.

Usually the purchase of a post-office banded package of 25 of the Fishing Fly envelopes (either size) does not mean that one has obtained two complete sets of ten. In most cases there is only one full set, plus an assortment of designs, 1-3 copies each.

~*****~ ☒☒☒ ~*****~

Upcoming JUBILEE Stationery

Details and **Linns** feature new items available from CPC for the Diamond Jubilee, celebrating the 60th year of Queen Elizabeth II's reign. Included are 6 international rate post cards. However, it appears that these will be available only in the six souvenir folders (one in each folder covering the 6 decades of her reign), and must be ordered from Antigonish. Each card will feature a picture of the crown, and the stamps showing the Queen issued in each decade. Keep your eyes open for other Jubilee items – such as envelopes. None appear to be in the works but that does not always tell the tale.

PCF Corner

(Robert Lemire: rlemire000@sympatico.ca)

Since mid-November several “new” PCF cards have been reported (Earle Covert, Pierre Gauthier, Robert Lemire); all these new cards are Die IIIc. Four of the six new Toronto views were found in different stores in the Toronto downtown area. TOR 3705 was found only at the CN Tower shop, whereas TOR 2830 was found in two shops, but *not* at the CN Tower. MAN 031 and MTL 107 are post-office stock. MTL 107, now with a SKU#, was only known previously with a white border.

PCF-T3H (borderless)

MAN 031	MTL 107	TOR 2830	TOR 2922	TOR 2923	TOR 2924
TOR 2925	TOR 3705				

Details of the New Toronto Views

The cards with newly reported views are 2-bar code types. They have no printed SKU numbers, the two vertical cards have the stamp impression at the same end of the card as the bottom of the image, and the 64392 00409 codes are at the bottom-left. For comparison with other recent cards (tabulated in PSN Vol. 24, #5, pg. 47), the codes on the cards are as follows:

<u>card #</u>	<u>view</u>	<u>bottom-left bar code</u>	<u>top-middle bar code</u>	<u>SKU#</u>
TOR 2922	Roger's Centre	64392 00409	73418 25022	none
TOR 2923	Aerial waterfront	64392 00409	73418 25021	none
TOR 2924	CN Tower	64392 00409	73418 25023	none
TOR 2925	Aerial view	64392 00409	73418 25024	none
TOR 2830	Old City Hall	64392 00409	73418 27552	none
TOR 3705	Downtown aerial	64392 00409	73418 27635	none



TOR 2830



TOR 3705



TOR 2922



TOR 2923



TOR 2924



TOR 2925

~*****~ ☒☒☒ ~*****~

PRIVATE ORDER ENVELOPE on "Basket Weave" Paper *Earle Covert & Bill Walton*

EN502-43 (229 x 153 mm) has a "basket weave" impression that was pressed into the paper before it was cut. The pressure was from outside of the envelope to the inside. It is a tab style with a Type C precancel. The underlined part of the corner card shows that it was used by a firm to send out "HOUSEHOLD HINTS" for more than one local dealer.



EN502-43

Fig. 1: Private order basket weave envelope – with “weave” enlarged and darkened below. This was impressed into the paper before it was cut. Precancelled with a type C precancel, this was sent as an individually addressed item.



Fig. 1a: Detail of the texture of the paper, color enhanced and enlarged (400%) to show the “weave.”

We know of only two examples of this envelope, one of which still has the enclosure – a 6 page pamphlet from Lowe Brothers promoting their paints, varnishes, shellacs, and enamels. Stapled at the top, with a punch hole for hanging, it included tips on stain removal, poison antidotes, etc. The “facts” section information indicates it was produced in 1929 or early 1930.

Lowe Brothers
Household Helps

With The Compliments Of:
H. F. YOUNG
 CREDITON, ONT.

Different Ways to Remove Spots and Stains
Helpful Things You'd Like To Know
Poisons and Their Antidotes :- Covering Capacities
Interesting Facts About Canada :- Public Holidays
Miscellaneous Information :- Entertainment

Results for For Trucks, Tractors and Implements Costs

Compare the cost of paint per gallon. It is the total cost per gallon that counts. The value of your implements is determined by the figures show saving. Lowe Brothers' Products are used.

Comparative Cost of Painting Two Verandahs

Cheap Paint	... \$1.00
Lowe Brothers'85
Material15
	50%

Comparative Cost of Painting Two Kitchens

Cheap Paint	... \$4.45
Lowe Brothers'	... 3.00
Material	... 1.45
	150%

Send for this Free Book
Practical Color Schemes for Home Decoration

This valuable booklet will help you with your decorating problems. Tells you what you need to know. A copy will be mailed to you for 25 cents or will be sent free if a label of any Lowe Brothers' Paint Can accompanies the order.

Fig. 2: Lowes enclosure in the basket weave envelope, with the imprint for H.F. Young, a dealer in Crediton, Ontario.

~*****~ ☒☒☒ ~*****~

PRIVATE ORDER ENVELOPES WITH ILLUSTRATIONS

Earle Covert & Bill Walton

RYRIE-BIRKS ENVELOPES:

These two large sized tab envelopes are among the most ornate private order issues, and also among the scarcest. As the scans below show, they were used by Ryrie-Birks (describing themselves as “diamond merchants” on one) to promote Christmas gift sales. Their mailing list must have been fairly large – large enough to justify the production of these envelopes and what was presumably an enclosed merchandise brochure – yet few have survived. We know at present of only two examples of EN502-75, and one of EN502-70.

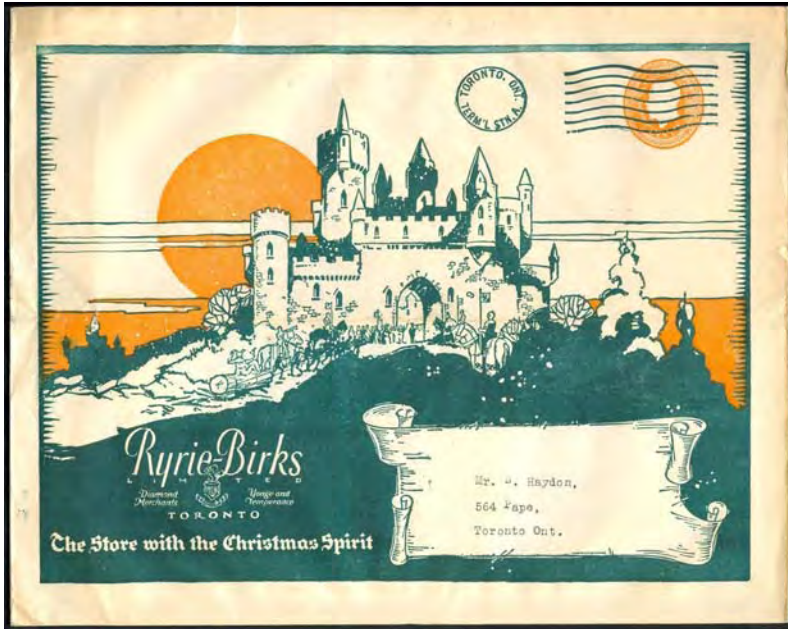
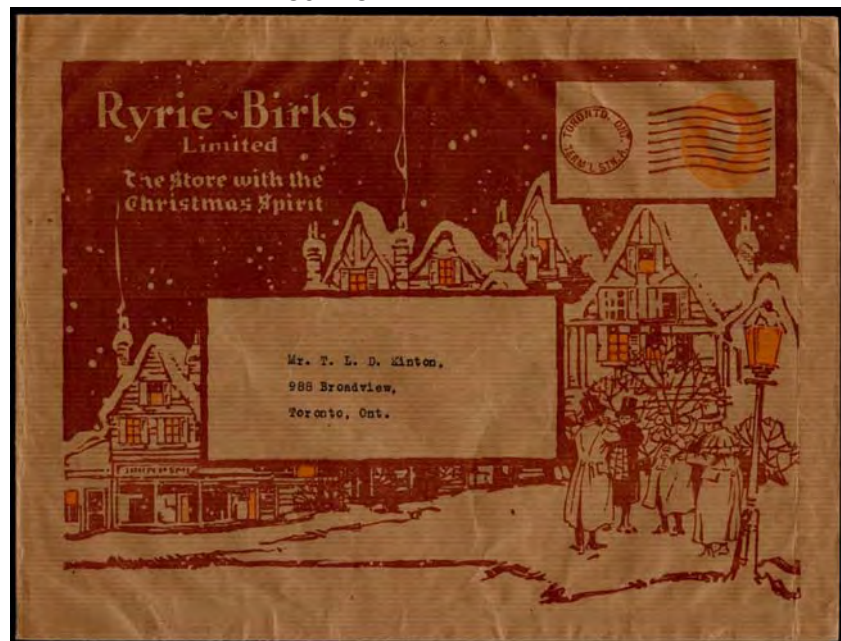


Fig. 1: The Ryrie-Birks envelope EN502-75 (269 x 214 mm) is a tab envelope with a green Type B precancel.

Fig. 2: EN502-70 (270 x 203 mm) is a laid kraft tab envelope with a brown Type B precancel. It will be renumbered to EN502-80 in the next WEBB.

EN502-75

Members are asked to let us know of any additional examples of either, or of any possible third envelope. Contact waltonwmc@aol.com.



EN502-70

Other private order envelopes are shown below.

PRIVATE ORDER ENVELOPES from CHESLEY ONTARIO, 1964-65

Earle Covert

This series of private order window envelopes was originally used with a handstamp “PUBLIC UTILITIES COMMISSION / CHESLEY ONTARIO” and then with a series of ads with a corner card “OFFICE OF THE TOWN CLERK / and Public Utilities Commission / *Chesley, Ontario*” and the last one reverted to “Public Utilities Commission / P.O. Box 366 / Chesley, Ontario.” All are Webb’s EN545-30a, 190x102 mm.

All are EN545-30a



Fig. 1: This first shows no advertising, but uses a handstamped corner for Public Utilities Commission in Chelsea, ON. Used in 1963.

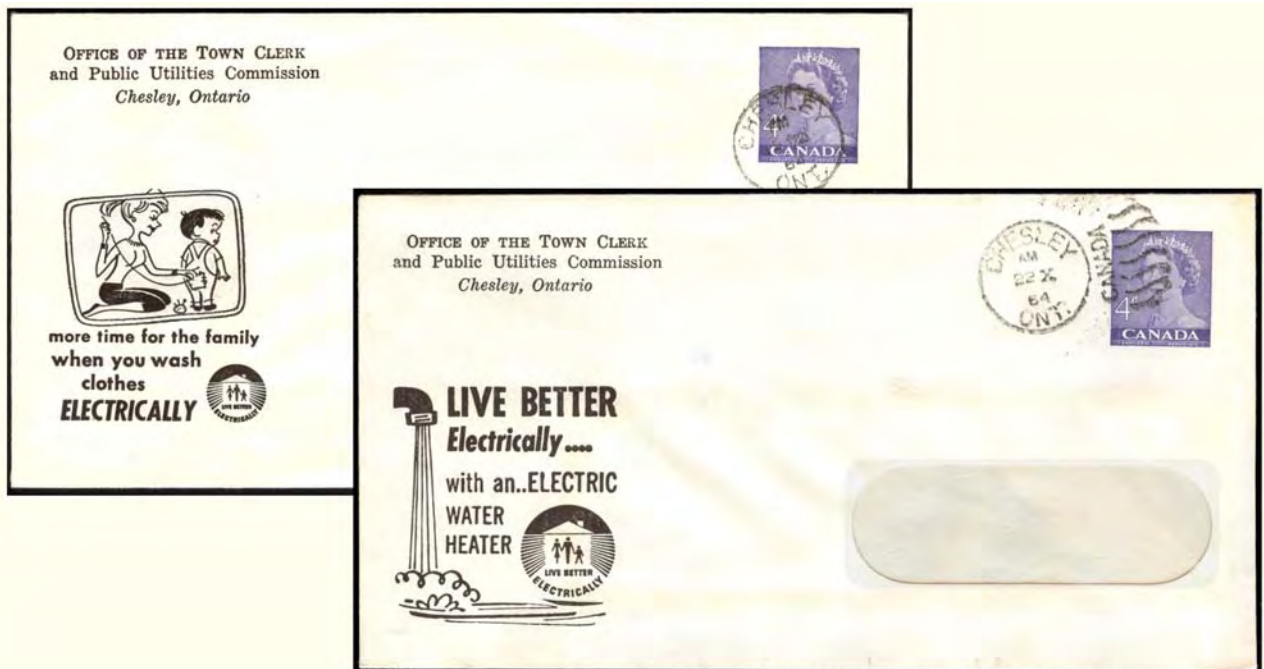


Fig. 2-3: 1964 Private Order window envelopes, used in Chesley, Ontario – now with illustrated advertising.

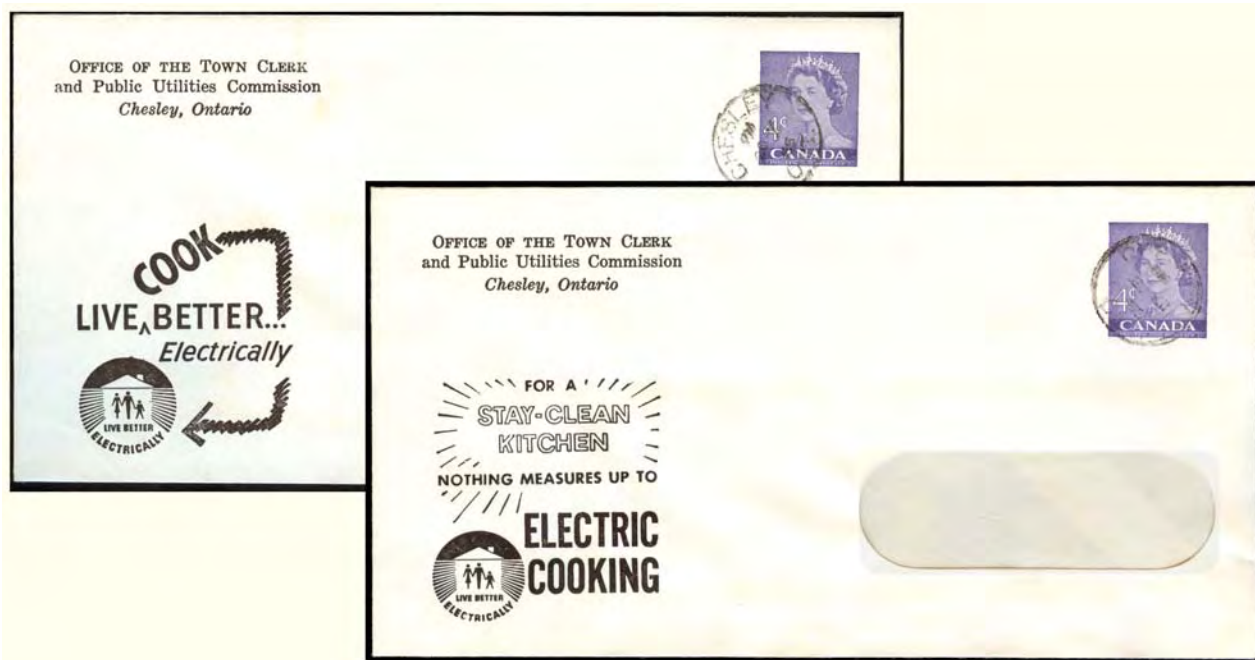


Fig. 4-5: Used in 1965 with new advertising promoting the use of electricity for cooking.

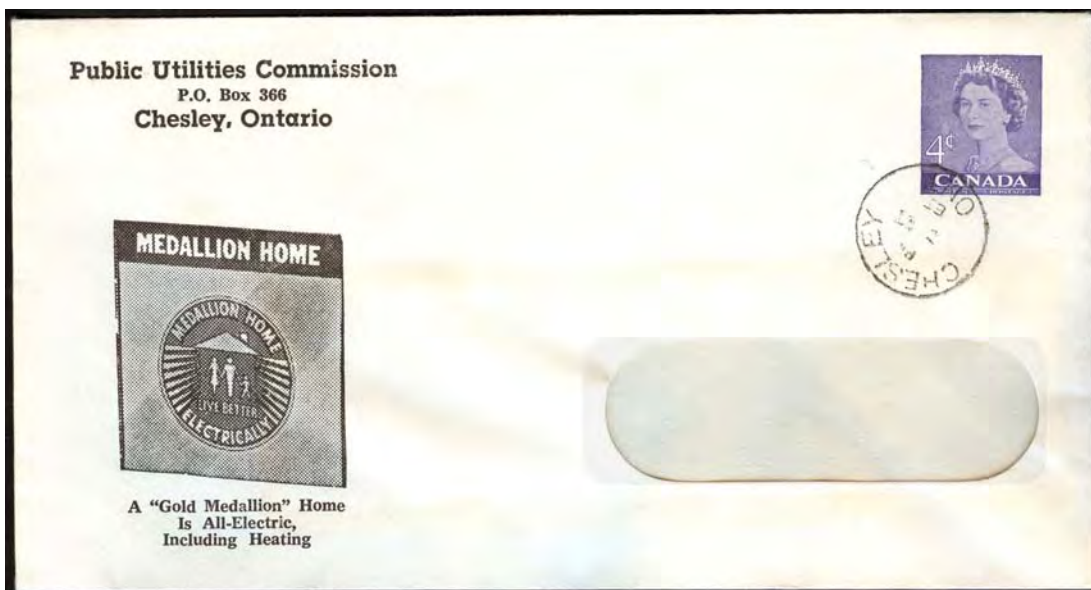


Fig. 6: This envelope, also from 1965, advertises the Gold Medallion home, which is "All-Electric, Including Heating. The corner has been changed to "Public Utilities Commission / P.O. Box 366 / Chesley, Ontario"

As noted is Webb's (p. 37/2001 Edition), window envelopes (with cut-out on the address side to show the address of enclosures) are (almost) always Private Order. Until 1997 Canada NEVER regularly issued a window envelope.

~*****~ ☒☒☒ ~*****~

An index for Vol. 24 of PS Notes is available on request from PSNotes@comcast.net, or by mail from Jean Walton, 125 Turtleback Road, Califon, NJ 07830