

Postal Stationery Notes

Volume 24 No. 5

Dec 2011

A HOLIDAY GIFT FROM CANADA POST!



For those who have not yet tried the Canada Post Create-A-Postcard application, now is a good time to do so. The currently running special allows for a single card and message sent to multiple addresses at \$1.63 a card (plus taxes where applicable). This is a respectable price to send a post card with preprinted postage to all your friends, using your own picture – a nice Christmas card!

Canada Post continues to upgrade the applica-

tion. It is now possible, using the computer application, to upload a mailing list to Canada Post, making it much easier to send to multiple addresses at the same time. Whether this is possible by Mobile App as well, I don't know. It is also now possible to pay by Paypal, saving the time that was necessary to enter all your credit card information.

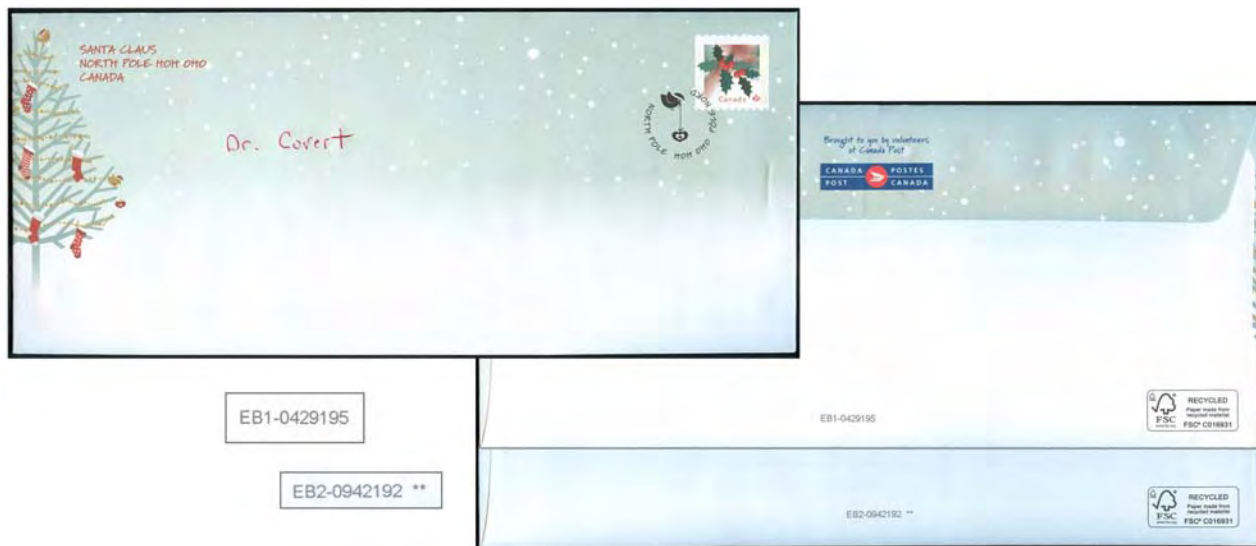
In addition, the time period between order and receipt of the printed card is now greatly reduced. We received cards ordered on November 27 by Dec. 5! Earle also reports that cards ordered on Dec. 2 were confirmed printed on Dec. 5 and received on Dec. 8.

Jean Walton

Merry Christmas and Best Wishes for the coming New Year!

Santa Envelopes 2011

Earle Covert



I have not seen any others. They are EB1 and EB2 - English before Christmas containing 2 different versions of the reply from Santa Claus. There should be FB1 and FB2, and English and French version for a blank sheet (for a personalized reply) and probably only one after-Christmas version in each language EA1 and FA1.

Supposedly there should be English and French large envelopes for classroom letters. Shown is one front with English H0H 0H0 cancel, and 2 backs, with EB0429195 & EB0942192 ** (not aligned).

What's New in Postal Stationery

One new card has appeared unexpectedly from Canada Post, not on their scheduled list of new issues. This is a card celebrating the Winnipeg Jets, first brought to our attention by the eagle-eyed Robin Harris, who wrote: *This was very much a "surprise Issue." I found out about it on Wednesday. The stamps and postal card were issued Thursday at 1:00pm. (November 10). There was an "embargo" such that no post office was to release the stamps before 1:00pm, when there was a special unveiling at the Winnipeg Jets arena (the MTS Centre).*



This card was issued to commemorate the return of the Jets to their home in Winnipeg; the card shows an historic photo of the initial team roster, taken 15 years ago at the MTS in Winnipeg. CPC notes this as a Souvenir Card (though unlike Souvenir Envelopes, this is not precancelled, and is available in post offices to be sent in the mail). The indicia is for postage to anywhere. The card is pricey – you can purchase it for \$4.95 – it seems Canada Post hopes to take advantage of team loyalty to sell these.

Envelopes (new printing date): Orchids and Gardens #10 6.6.11 (8 different)

~*****~ ☒☒☒ ~*****~

DUES TIME AGAIN! Don't fail to send your \$8.00 dues check made out to John Grace, at 734 Aspen Rd Pickering ON, L1V 4H2. If you would prefer to pay via Paypal, you may do so by going to Paypal and making a payment to jpg1353@yahoo.com of \$8.00. If you are able to make this a personal Paypal payment [instead of for goods, etc. – LOOK FOR THE TAB BELOW THE PAYMENT BOX) and are drawing from a balance in your Paypal account or using your bank account, there is no Paypal fee charged to you or to us. We are happy to accept your money either way – why not do it now so as not to forget? Many thanks! We hope to have one more issue out within 2011, so complete Volume 24.

~*****~ ☒☒☒ ~*****~

PSNotes Contact information: Chairman: Earle L. Covert, ecovert@telusplanet.net, Box 1190, Raymond, AB T0K 2S0, phone 403-752-4548. For articles, news or reports: John Grace, our Secretary-Treasurer, and contact person for the study group (jpg1353@yahoo.com, 734 Aspen Rd Pickering ON, L1V 4H2), and Jean Walton (jwalton971@aol.com, or PSSG@comcast.net, 125 Turtleback Rd, Califon NJ 07830), layout/copy editor for Postal Stationery Notes.

Emailed copy of PSNotes: To receive PSNotes in colour in pdf format, send your email to John Grace at jpg1353@yahoo.com. It's free! If you prefer this version to the mailed version and ONLY want the online version, let us know and we will remove you from the mailing list for Canada Post copies. But you do not need to choose – you can continue to receive both.

POSTAL STATIONERY BOOKLETS

Earle L. Covert

Six months ago Dave Bartlett sent me scans of two booklets he had bought at BNAPEX in Victoria in 2010. One booklet had adhesive stamps on it and the other was made from a two cent Scroll blank card.

The postal stationery booklet was made by taking the two cent Scroll regular Issue blank heading postcard (P40), rouletting it 10mm from the left end and stapling the unknown number of cards between two cardboard covers using two staples.



Fig. 1: The outside of the 2 cent Scroll booklet

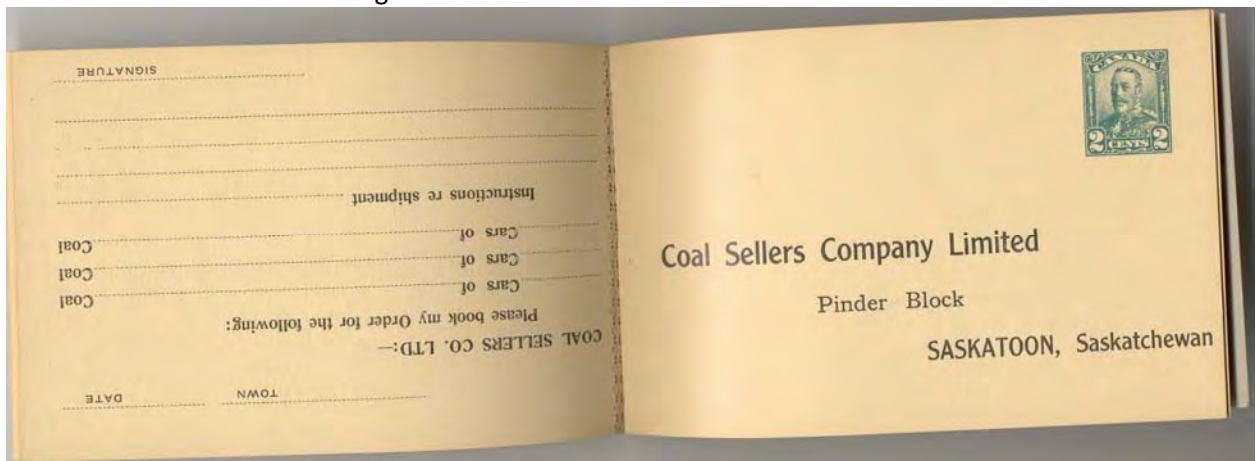


Fig. 2: The inside of the opened 2 cent Scroll booklet

In contrast to the Regular Issue postcard booklet, I have two CPE postal stationery booklets manufactured as a Special Order by Moore Business Forms. The four cent card book had forms which has three copies. There is a front flimsy with the imprinted stamp. Then, there is a carbon paper, a thin copy, another carbon and finally a second thin copy. The five parts are rouletted near the left edge to allow removal from each other. The three paper copies of the form with two carbon papers are glued together on the selvedge at the left. However, the very thin back copy of these forms is longer than the other copies at the right to allow the selvedge to be bound into a book on the right side. There is a roulette near the right edge to allow the back copy, and thus the set of forms, to be separated from the larger book. The book is bound at the right with two staples holding a thin cardboard front cover, a group of selvedges of the back copies of the five part forms, a heavy cardboard spacer – the last two groups were repeated until there is a

heavier long back cover. The back cover is folded so it could be inserted behind the five part form to provide a firm writing surface, and prevent transfer of writing to later carbon sets.

The two cent card book is similar in binding format, but only has three parts with one carbon between the card and the thin copy.

The two cent card book (RKP83g) appears to have 50 forms and the four cent card book (RKP85b) to have 25 forms. It is difficult to be sure as my examples have many used and removed sets of forms.



Fig. 3: Outside of 2 cent Karsh Canadian Pacific Express book with long back cover folded over the front.

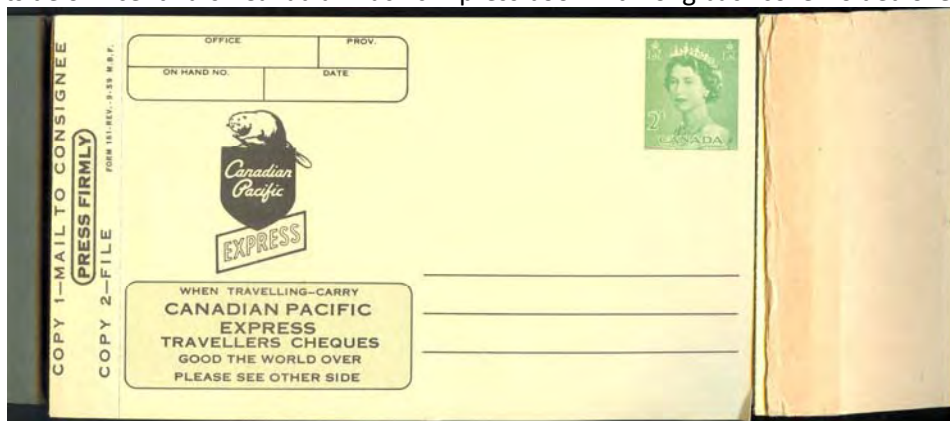


Fig. 4: 2 cent Karsh book opened

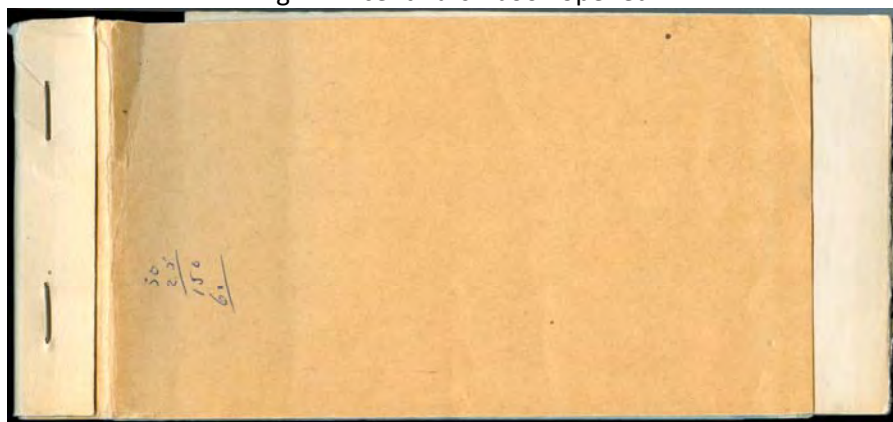


Fig. 5: Outside of 4 cent Karsh Canadian Pacific Express book with long back cover folded under the front cover

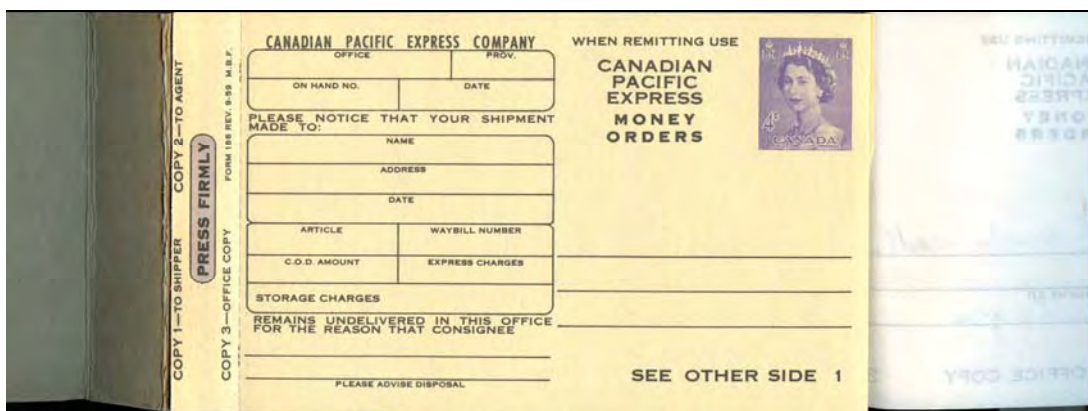


Fig. 6: 4 cent Karsh book open

About 35 to 40 years ago, I remember coming across an abandoned vandalized railway/freight station in New Brunswick. It had been broken into and everything scattered about on the floor. I recall hundreds of similar sized books of forms. I looked for any that had even one card left in it and found none. I regret not having picked up a few to show the format of these books.

Somewhere, I have a CPR six cent Centennial book in a similar format which I obtained in St. Stephen, NB. Also I was shown a King George VI booklet which was five or six cards high separated by horizontal roulettes and had at least one blank page and a carbon paper behind the row of card. It was bound on the left side. It was owned by a non-collector who thought it was worth at least a thousand dollars, so I never bought it.

If you have other postal stationery booklets, please send scans for inclusion in Postal Stationery Notes.

Earle Covert: ecovert6@gmail.com

Thanks for your good wishes.

Many thanks to all who have been in touch during this difficult time. As many of you know, Audrey Covert has been in hospital for many weeks now. She is on the road to recovery, but it has taken much time and care. The thoughts and prayers sent by so many are greatly appreciated.

Earle L. Covert

~*****~ ☒☒☒ ~*****~

ANNOUNCEMENT!

Dick Staecker's collection of postal stationery and duplicates now are at Maresch in Toronto and will be in the February auction. For a free copy of the catalogue, call 416 363 7777, Fax 416-363-6511 or ask with an e-mail from the website www.maresch.com.

Request to PSSG Members: Dear Mr. Grace: For my postmark collection, I seek post-1918 machine-cancellation postmarks of SARNIA, Ont. (collecting daily use). If you have any for sale (on postal stationery or otherwise), please let me know. Thank you. Contact Charles Addington, Box 216, Station B, London, Ont. N6A 4V8.

PCF Corner

(Robert Lemire: rlemire000@sympatico.ca)

A new "old" card

First, there is a report from recently-joined BNAPS member Dudley Nash of a previously unreported sticker card, on brown-back VAN118 (**PCF-T1Bs VAN118**).

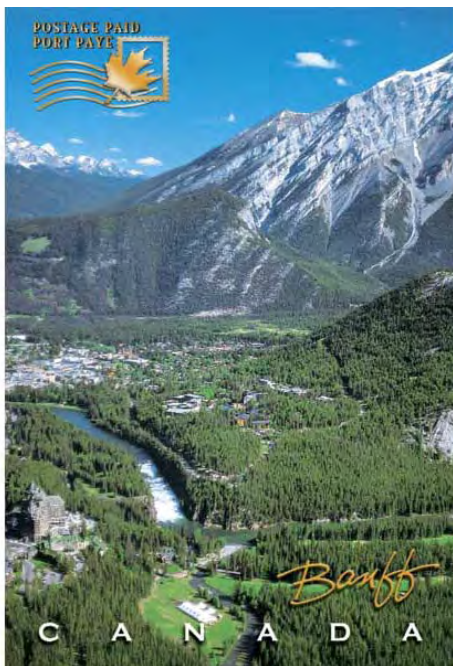


Also, since mid-September several "new" PCF cards have been reported (Earle Covert, Robert Lemire); all these new cards are Die IIIc.

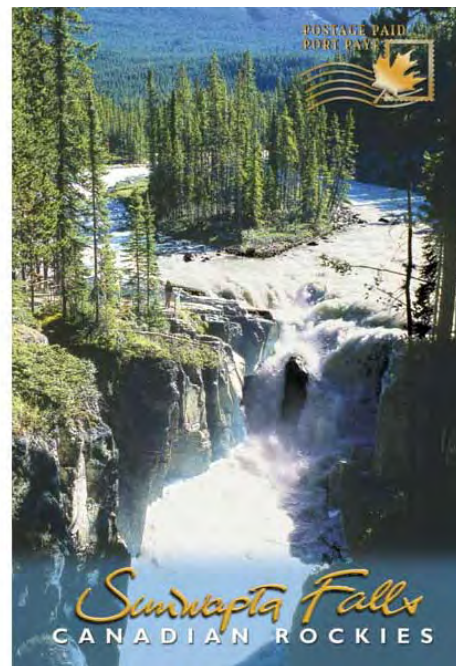
PCF-T3H (borderless)

BNF 371	CR 226	CR 1336	CY 106	OT 014	OT 022
OT 045	OT 047	VAN530			

Four of these (OT 014, OT 022, OT 045, OT 047) are borderless versions of cards that had appeared previously only as views with borders. Die IIIc cards OT014 and OT 022 previously had been issued with white borders. The orientation of the three vertical views (BNF 371, CR 1336, OT 045) is such that the stamp impression is at the same end of the card as the bottom of the view. CY 106 is post office stock.



BNF 371



CR 1336



CR 226

Recently Earle Covert was told by Postcard Factory[®] that the cards are printed on sheets that measure 38 inches by 25 inches. This would mean that the layout likely is either 5×5 or 8×3. The cutting of the card sheets is reported done by the security printer, Lowe-Martin.

The cards with newly reported views are 2-bar code types, but the codes do not fit smoothly into the sequences discussed in PSN Vol. 22, #6, pg. 61. There are no printed SKU numbers, the 64392 00409 codes are at the top, not at the bottom-left, and the number-sequence is different.

<u>card #</u>	<u>view</u>	<u>bottom-left bar code</u>	<u>top-middle bar code</u>	<u>SKU#</u>
BNF 371	Banff aerial	73418 26960	64392 00409	none
CR 226	Bow River, Castle Mountain	73418 26959	64392 00409	none
CR 1336	Sunwapta Falls	73418 26961	64392 00409	none

For the five cards discovered by Raymond Gagné and shown in the last issue of PSN,

<u>card #</u>	<u>view</u>	<u>bottom-left bar code</u>	<u>top-middle bar code</u>	<u>SKU#</u>
CST 7568	www.Fairmont.com	73418 26967	none	none
CST 8862	The Chateau Frontenac	73418 26966	none	none
CST 8863	Rue du Petit-Champlain	73418 26969	none	none
CST 8878	Views of Quebec City	73418 27029	none	none
VQ 8866	Beautiful autumn in Quebec City	64392 00409	73418 26981	none

Very confusing, but *probably* the 73418 bar-code number (regardless of position) was assigned by Postcard Factory[®] in numerical order as cards were prepared. However, such numbers *may* be assigned to items other than postage prepaid cards.

~*****~ ☒☒☒ ~*****~

ADDITIONS TO THE P4 FOREIGN USE CENSUS

Vic Willson

In the first issue of this year in March (Vol. 24, No. 1), we included a census of known uses of Canada's first UPU card, issued in 1878 to provide a foreign rate card. A number of uses have been added to that list, most from Longley's Auction in May 2011. We include new uses here for you to add to the list published in March.

New uses or earlier dates Include: (ed=earlier date, nc=new country)

Bermuda	1885*	ed	Hong Kong	1893	nc
China*	1889	ed	Hungary	1888*	ed
Costa Rica	1910†	nc	Mexico	1881‡	ed
Cyprus	1889*	nc	New Zealand	1895‡	ed
Finland	1889‡	ed	Panama (then part of Colombia)	1886	nc
Guatemala	1885	ed	St. Kitts	?	nc
Hawaii	1894	ed	Sweden	1881‡	ed

† Lee Auction Sep 1999 Auction

‡ Longley Auction #20, May 26, 2011

* WCW

~*****~ ☒☒☒ ~*****~

MORE ON EDWARD INSURED ENVELOPES

Bill Walton, George Dresser

In Vol. 24, No. 3 I showed a 2¢ Edward envelope with an insured mail usage. George Dresser spotted a glaring typo in the write-up page, which describes the 5¢ charge for insurance fees as providing \$200 coverage. As George noted, this should have been \$20. He included a table of fees, as follows.

Insurance Fees	Limits of Compensation
\$ 0.03	\$10
\$ 0.04	\$15
\$ 0.05	\$20
\$ 0.06	\$25

Source: Canada Official Postal Guide 1907, p xxvi

George also sent scans of two more insured stationery covers from his extensive Edward collection. The first of these, shown below, has 13¢ paid – 2¢ postage, 5¢ registration, and the 6¢ for insurance fees, for compensation up to \$25.



Fig. 1: An Edward registered insured cover, sent from Boulevardarie NS July 10, 1905 to Hamilton, ON (received July 13) with 2¢ envelope imprinted postage, plus an additional 11¢ (5¢ for registration and 6¢ for insurance), for a total of 13¢ paid. EN17

George sent comments on the second cover: "This second cover is interesting as it is short paid by three cents, the minimum insurance fee, and rated 6 cents due in blue pencil. One might wonder how an insured letter would be short paid, but the Postal Guide provides for this event: *If an unpaid or underpaid letter is accepted for insurance, the accepting officer will, as in the case of a registered letter, be held responsible for the deficiency in prepayment.*

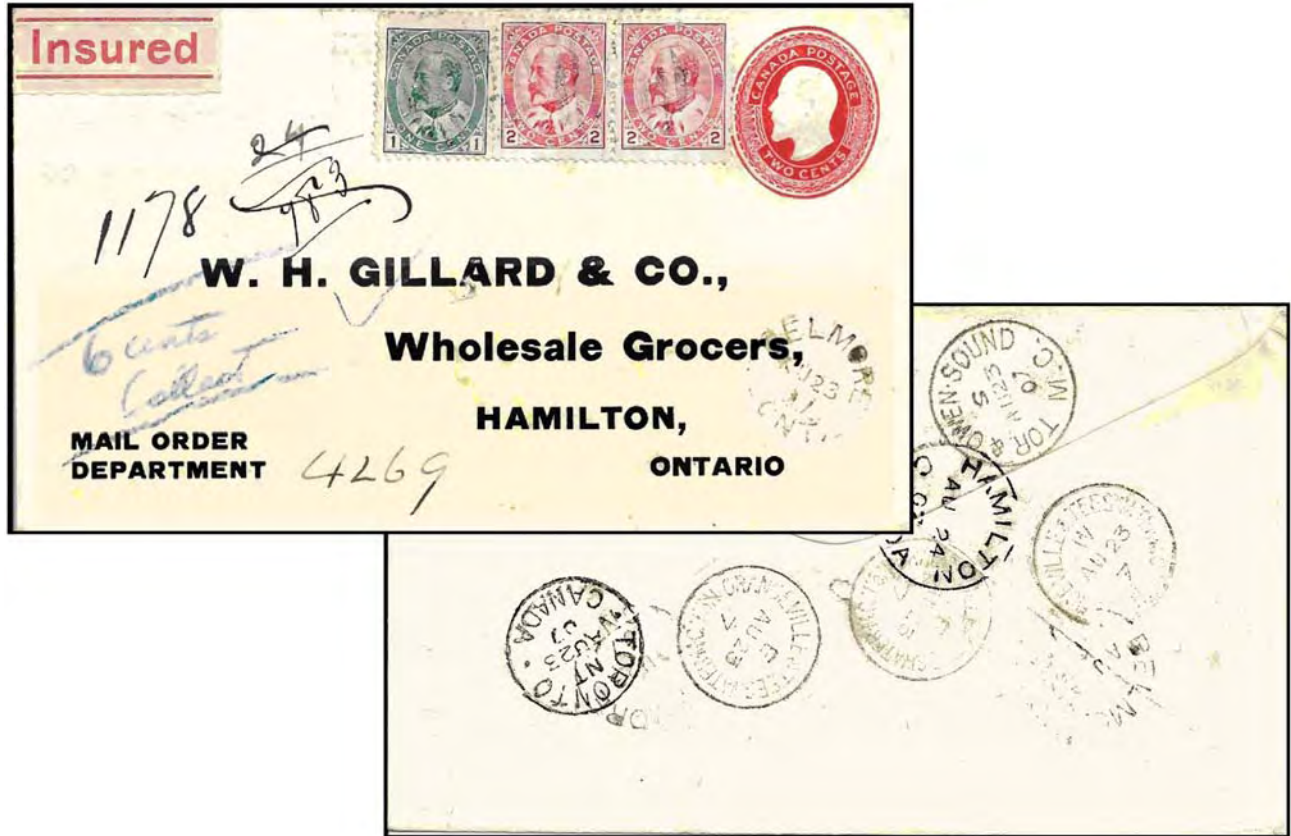


Fig. 2: Another 2¢ Edward postal stationery envelope, used in Belmore, ON to Hamilton, with an added 5¢ which pays the registration fee, and an Insured etiquette. As the minimum insured rate was 3¢, it received a 6¢ due marking, which we presume was paid by the clerk making the error in franking.

One other possibility exists with this cover. The insured fees may have been intended by the sender to be 5¢ for \$20, and were thus fully paid – but the additional 5¢ for registration was unpaid. The postal clerk (who certainly forgot something, where insurance fees or registration fees), may have been unaware that registration was necessary, or may have seen the 5¢ for insurance and though he'd also figured 5¢ for registration. This would have meant 10¢ instead of 6¢ due, so the interpretation of shortpaid insurance was fortunate for the addressee.

Two very interesting stationery covers, in any case. Thanks, George.

~*****~ ☒☒☒ ~*****~

Unusual and Exotic Postal Stationery Usages

Bill Walton

The eighth in our continuing series. We would welcome other contributions to this series from other members.

8: Labrador & Quebec Dog Team Use of 3¢ Newfoundland Postal Stationery Envelope.



Fig. 1: Cancels on front: Cartwright Jan 23, 1904), Battle Harbor Feb. 5, Blanc Sablon, Newf'd Ty Feb. 10; on back: Lourdes du Blanc Sablon, Que. Feb. 22, Natashquan Mar 5, Esquimaux Point March 14, Quebec April 19, and then to London, England, arriving April 29 – a long voyage by dog team (cometique) and boat.

This 3¢ Newfoundland envelope (Webb's EN1) tells an interesting postal history story. It originated from Cartwright, Labrador (Jan. 23, 1904), made its way to Battle Harbor (Feb. 5), on to Blanc Sablon/Newf'd Ty (Feb. 10) (prior to the transfer of Blanc Sablon to Quebec), and then entered Canada at Lourdes du Blanc Sablon (Feb. 22). It then continued by dog team (cometique) to Natashquan (March 6) and Esquimaux Point (March 14) (changed in 1924 to Havre-St. Pierre). It no doubt continued along Quebec's North Shore by dog team, probably to the Saguenay, and arrived in Quebec April 19. From there it went to London, with what appears to be an April 29 cancel – three months in transit. A nice Labrador cover – the Blanc Sablon and Esquimaux Point markings in particular – and a nice Quebec cometique cover as well.

I acquired this many years ago from Andy Holtz, still in Toronto at the time. It arrived in the mail one day, and a note from Andy explained how he'd come by the cover. It was in a large lot in an auction he attended in Zürich, but it was the only item in the lot he wanted.

He sat next to the winning bidder, a Turk. Before Andy left, he put a note behind this cover indicating his interest, -- and eventually got a note from Turkey and bought it. I knew nothing about this until it arrived in my mailbox – from somewhere to Switzerland to Turkey to Canada (back again after 80 years) and finally to New Jersey.

~*****~*****~*****~*****~*****~*****~*****~*****~*****~