

# Postal Stationery Notes

Volume 23 No. 1

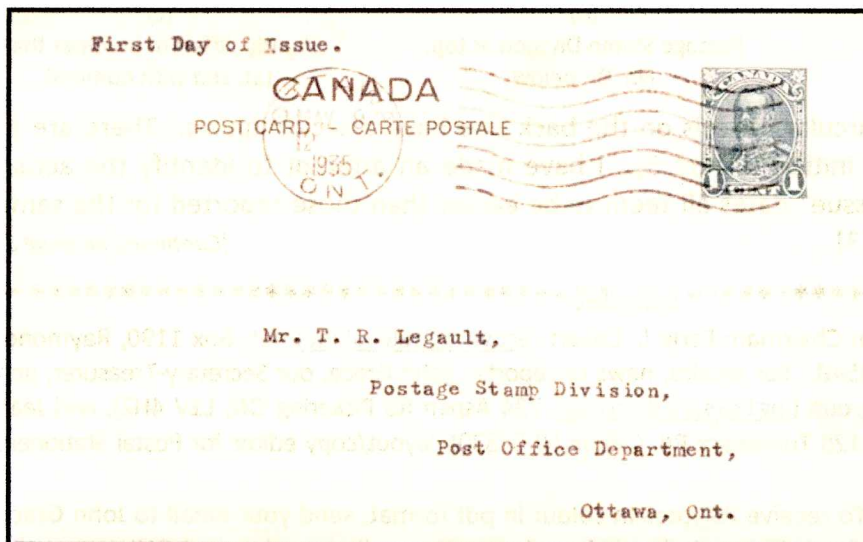
February 2010

**Dues time again!** A red check mark here  indicates your dues have NOT YET been received. If you have not already done so, please send your cheque for \$8 (made out to John Grace) for Volume 23 of PSNotes to John Grace at 734 Aspen Rd Pickering ON, L1V 4H2, Canada. You may now also pay your dues by Paypal, if you have an account, by going to Paypal, choosing SEND MONEY, and then PERSONAL and remitting a "payment owed" of \$8.00 to John Grace at [jpg1353@yahoo.com](mailto:jpg1353@yahoo.com). We hope this makes it more convenient for you.

~ \*\*\*\*\*~ ☒☒☒ ~\*\*\*\*\*~

## Legault "First Day Covers" for Post Cards — 1935-1938 *Robert Lemire*

In the 1930s and 1940s, T. R. Legault, who was Accountant in Charge of the Postage Stamp Division, Financial Branch in the Canadian Post Office Department prepared a series of unofficial First Day Covers for a number of issues of Canadian adhesives and postal stationery. The postal stationery covers have been described previously in articles appearing in *BNA Topics* by Baron. [1], [2] (These articles are available on the BNAPS website in the Horace W. Harrison Online Library.). It appears that for the most part the dates on the covers represent the earliest dates that Mr. Legault noted the items in stock received by the Post Office Department. Recently I had occasion to examine carefully 26 different Legault post card first day covers (dated 1935-1938), all addressed to Mr. Legault. Several minor differences in the preparation of the cards were noted, and it seemed worthwhile to list some of these differences "for the record" (See Table 1). The earliest reported Legault post card first day cover is shown in Figure 1.



**Figure 1:** The earliest Legault post card first day cover. The May 9, 1935 cancel on Webb's P57c antedates the first day of issue of the corresponding 1c adhesive by almost a month.

The stationery covers seem to have been of only marginal interest to Legault. The covers with adhesives, and even the prestamped envelopes, cover a much wider range of issues.

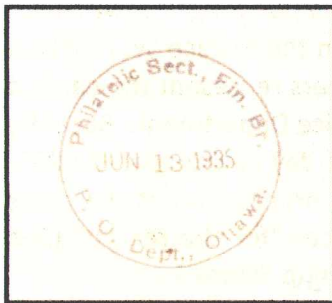


**Figure 1a: Typed First Day notation.**

The typed caption “First Day of Issue” appears on all of the cards, sometimes as shown in Figure 1a, sometimes all in upper case letters, sometimes underlined. The address varies slightly; for example, sometimes the address contains the title “Accountant in Charge”, and “Financial Branch”, and sometimes “Postage Stamp Division” is omitted. Many of the cards have a normal Ottawa machine cancel (Figure 1) and are identified as “M” in Table 1; one card (P62b) has an Ottawa slogan machine cancellation “M(s).” Other cards (“C” in Table 1) were cancelled with a simple dated closed-ring Ottawa circular hammer.

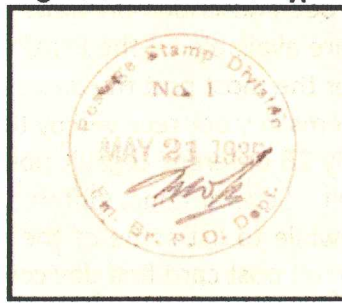
Most of the cards also bear an additional Post Office cancel on the back of the card (for reply cards, on the back of the message half). The three distinct circular back cancels are shown in Figure 2.

**Figure 2: Back Cancel Types**



(a)

Philatelic Sect., Fin. Br. at top,  
P.O. Dept, Ottawa below



(b)

Postage Stamp Division at top.  
Fin. Br. below



(c)

Slightly different hammer than  
(a), and with numeral

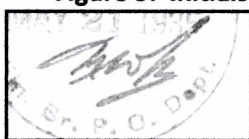
Most (but not all) of the circular cancels on the back also have a set of initials. There are at least two different sets of initials (Figure 3). I have made an attempt to identify the actual initials. The “First Day of Issue” dates all seem to be earlier than those reported for the same cards in normal postal use [3]. [Continued on page 3]

~\*\*\*\*\*~ ☒☒☒ ~\*\*\*\*\*~

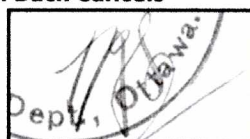
**PSNotes Contact information:** Chairman: Earle L. Covert, [ecovert@telusplanet.net](mailto:ecovert@telusplanet.net), Box 1190, Raymond, AB T0K 2S0, phone 403-752-4548. For articles, news or reports: John Grace, our Secretary-Treasurer, and contact person for the study group ([jpg1353@yahoo.com](mailto:jpg1353@yahoo.com), 734 Aspen Rd Pickering ON, L1V 4H2), and Jean Walton ([jwalton971@aol.com](mailto:jwalton971@aol.com), 125 Turtleback Rd, Califon NJ 07830), layout/copy editor for Postal Stationery Notes.

**Emailed copy of PSNotes:** To receive PSNotes in colour in pdf format, send your email to John Grace at [jpg1353@yahoo.com](mailto:jpg1353@yahoo.com). it’s free! If you prefer this version to the mailed version and ONLY want the online version, let us know and we will remove you from the mailing list for Canada Post copies. But you do not need to choose – you can continue to receive both.

Figure 3: Initials Used on Back Cancels



(1) perhaps MWB or MWK?



(2) maybe NGS or NGL?

Table 1: Details of Legault-prepared "First Day of Issue" post cards

| Webb's No.                       | front cancel* | postmark date | back cancel** | initials (type)*** | notes  | PSSG ERP list date**** |
|----------------------------------|---------------|---------------|---------------|--------------------|--|------------------------|
| <b>The CBNC Front Face Issue</b> |               |               |               |                    |  |                        |
| P56                              | M             | JUN 13 1935   | a             | none               | + 1¢ 1935 Pictorial Issue adhesive (Scott 217)       | Jan 10 1936            |
| P57                              | M             | JUN 13 1935   | a             | none               |  | Sep 6 1935*            |
| P57a                             | M             | MAY 21 1935   | b             | (1)                | corresponding adhesive not issued until June 1, 1935 | Jun 8 1935             |
| P57c                             | M             | MAY 9 1935    | b             | (1)                | corresponding adhesive not issued until June 1, 1935 | Jun 11 1935            |
| P58                              | M             | OCT 1 1935    | b             | (2)                |  | Oct 9 1935             |
| P59                              | M             | JUL 13 1935   | c             | (2)                |  | Nov 28 1935            |
| P60                              | C             | SP 3 35       | a             | (2)                |  | Dec 5 1935             |
| P60b                             | M             | JUN 4 1935    | b             | (1)                |  | Aug 2 1935             |
| P60c                             | M             | AUG 29 1935   | none          |                    |  | Nov 25 1935            |
| <b>The CNBC Profile Issue</b>    |               |               |               |                    |  |                        |
| P61                              | C             | OC 7 35       | b             | (2)                | + 1¢ 1935 Pictorial Issue adhesive (Scott 217)       | Feb 12 1937            |
| P61c                             | C             | OC 1 35       | b             | (2)                | + 1¢ Medallion Issue adhesive (Scott 195)            | Sep 22 1936            |
| P62d                             | C             | AU 26 35      | c             | (2)                |  | Sep 22 1935            |
| P62g                             | C             | AU 20 35      | c             | (2)                |  | Oct 8 1935*            |
| P63a                             | M             | OCT 9 1935    | b             | (2)                |  | Aug 21 1936            |
| P64a                             | C             | JU 2 36       | b             | (2)                |  | Oct 11 1938            |
| P65                              | M             | SEP 3 1935    | c             | (2)                |  | Jul 13 1936            |
| P65b                             | M(s)          | OCT 26 1935   | none          |                    |  | Dec 10 1935*           |
| P65c                             | M             | NOV 5 1935    | b             | (2)                |  | Nov 30 1935            |
| <b>The George VI Issue</b>       |               |               |               |                    |  |                        |
| P66                              | C             | AP 28 38      | b             | (2)                | bright mauve back cancel                             | Oct 21 1938            |
| P66d                             | M             | MAY 28 1938   | b             | (2)                | bright mauve back cancel                             | Jul 27 1938            |
| P66e                             | C             | AP 25 38      | b             | (2)                | bright mauve back cancel                             | Mar 3 1939             |
| P67a                             | M             | MAY 26 1938   | b             | (2)                | bright mauve back cancel                             | Dec 6 1938             |
| P67c                             | M             | NOV 1 1938    | b             | (2)                | bright mauve back cancel                             | Jun 10 1939            |
| P68                              | M             | JUN 16 1938   | b             | (2)                | bright mauve back cancel                             | Oct 6 1938*            |
| P68b                             | C             | MY 14 38      | b             | (2)                | bright mauve back cancel                             | Jul 7 1938*            |
| P68c                             | M             | JUN 2 1938    | b             | (2)                | bright mauve back cancel                             | Dec 6 1938             |

\* M machine cancel; C closed-ring circular cancel

\*\* see Figure 2

\*\*\* see Figure 3

\*\*\*\* ERP List, 1994, available at <http://www.waltonweb.us/jrw/PSNotes/ERPS-PSN1994.pdf>.

ERP dates are from original list, with updates (\*) as published in Notes [Vol. 12, #3, 4, & 5 (1994), and Vol. 13, #5 (1996)].

NOTE: Some of the issued cards in each group were not represented in this holding of Legault first day cards. Mr. Legault may not have prepared first day cancelled copies of all items, but similar FDCs also have been reported for P59a, P62 and P63 (PSN Vol. 13, # 2 Aug 1995, pg. 11).

It would be interesting to learn whether other copies of these Legault-prepared cards in collectors' hands are similarly cancelled and initialed and, of course, whether other post card first day items are known to have been prepared by Legault. In general, Front Face Issue cards printed by the Canadian Bank Note Company (CBNC) were initially distributed slightly before the corresponding Profile Issue cards. Webb's P60 and P65 (cards issued for the same postal purpose) even have identical Legault first-day dates (the cancellations and back cancels are different). The reason for the printing of these two separate CBNC designs has always puzzled me, and continues to do so.

### References

- [1] Melvin L. Baron, First Day Covers of the Classic Issues of Canada Part 15 - Postal Stationery - Stamped Envelope Issues of 1930-1943, *BNA Topics* 54 (1996) 17-25.
- [2] Melvin L. Baron, First Day Covers of the Classic Issues of Canada Part 16 - Postal Stationery - Postal Card Issues of 1935-1938, *BNA Topics* 55 (1997) 47-53.
- [3] William C. Walton and the BNAPS Postal Stationery Study Group, Earliest Reported Postmark (ERP) Listing for the Postal Stationery of Canada and Newfoundland, *Postal Stationery Notes* special issue No. 4, June 1994 and subsequent updates in *Postal Stationery Notes*.



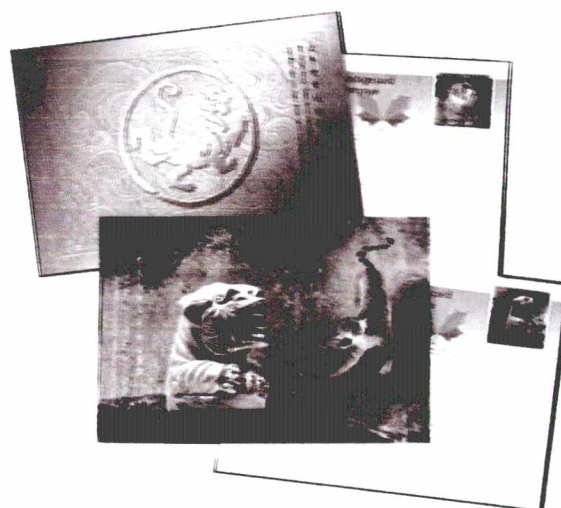
### Website interest?

When Stephen Whitcombe was editor on PSNotes, he also maintained a website for the Postal Stationery Study Group. Is there any interest in doing that again? And is there any member who might like to take on this responsibility? We would be happy for volunteers who know more about web design than I do – my efforts would be somewhat amateurish. The archive of PSNotes is online at the BNAPS Harrison Online Library through 2003, and we could offer members availability of issues since then in pdf format. It might also be a showcase for new discoveries, or ongoing projects such as ERPs. Any feedback or offers of help are welcome. Contact [jwalton971@aol.com](mailto:jwalton971@aol.com) or Earle Covert at [ecovert@telusplanet.net](mailto:ecovert@telusplanet.net).



# What's New in Postal Stationery

**Chinese New Year: 2 cards commemorating the Year of the Tiger, with international prepaid postage.**

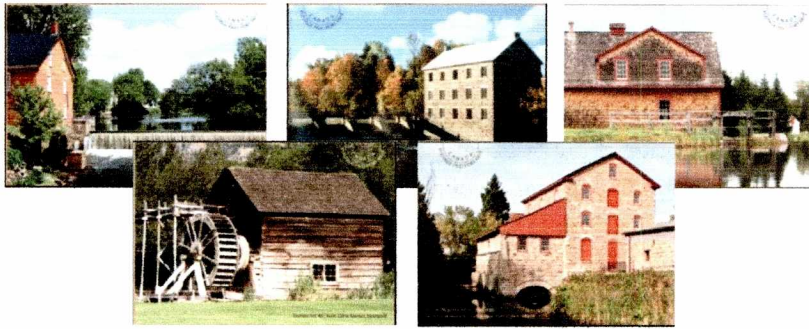


### New Envelope Dates

|                                   |          |
|-----------------------------------|----------|
| Orchids and Gardens #10           | 07.14.09 |
| Fishing Flies #10                 | 07.14.09 |
| Commemorative Envelope: Le Devoir | 01.10.10 |

### New Postal Cards:

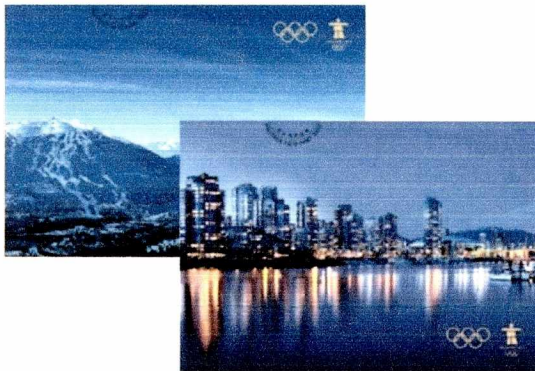
|                                  |         |
|----------------------------------|---------|
| Year of the Tiger – 2 cards      | 1.08.10 |
| Historic Mills – 5 postal cards  | 1.11.10 |
| Olympics (Vancouver & Whistler)  | 1.12.10 |
| African Violets – 2 postal cards | 3.03.10 |



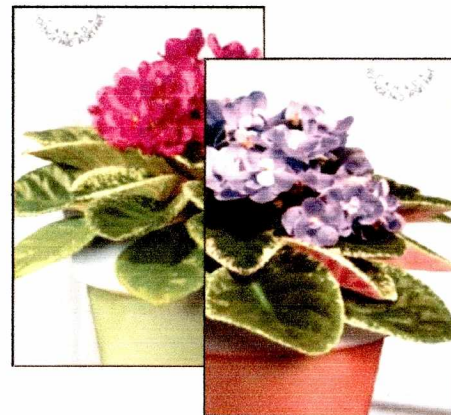
**Historic Mills:** 5 cards showing historic mills, and employing the matching Mill stamp for domestic prepaid postage. Illustrated are Watson's Mill (Manotick, ON), Jeremeos Grist Mill (Keremeos, BC), Old Stone Mill National Historic Site (Delta, ON), Riordan Grist Mill (Caraquet, NB), and Cornell Mill (Stanbridge East, QC).

The stamps used on these cards are the flag over Mill stamps, issued the same day, showing the same historic mills.

**The Olympic cards** use the indicia shown below, stamps issued the same day as the postal cards.



**Olympic postal cards** – 2 cards showing Vancouver at night and Whistler slopes, with matching international prepaid postage.



**African violets** – 2 international prepaid postal cards, using the indicia of the matching stamps:



**A commemorative envelope** honoring the newspaper **Le Devoir** and its creator, Henri Bourrasa, on its 100<sup>th</sup> Anniversary.\*

\*Many collectors do not consider these commemorative envelopes true PS, as they cannot be sent through the mail.



Next, two attractive padpost cards from Arthur Lavigne of Quebec – known only in French.



Fig. 3



Fig. 4

Both Pierre and I have this second Lavigne card in our collections.

Here are three more padpost – a Montmagny farm implement manufacturer, a local political candidate in Montreal, and a cheaply produced ad for a corset fastener company in Montreal (interestingly, mailed to Woodstock, Ont.).

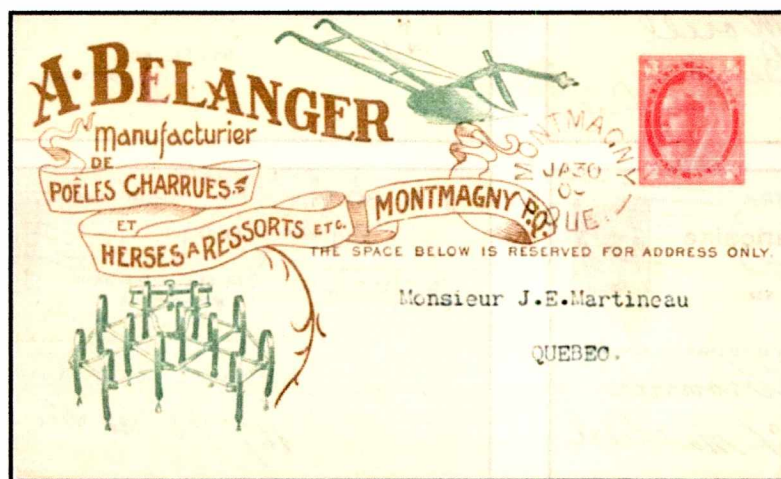


Fig. 5



Fig. 6

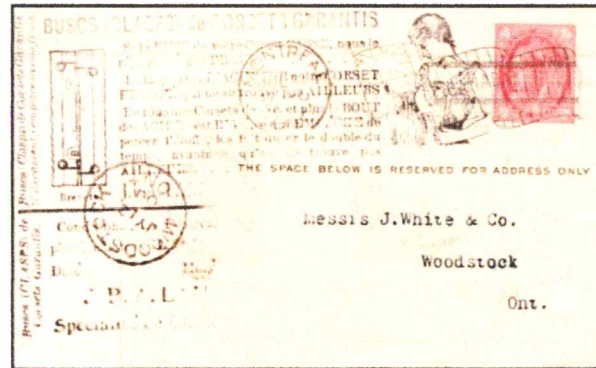
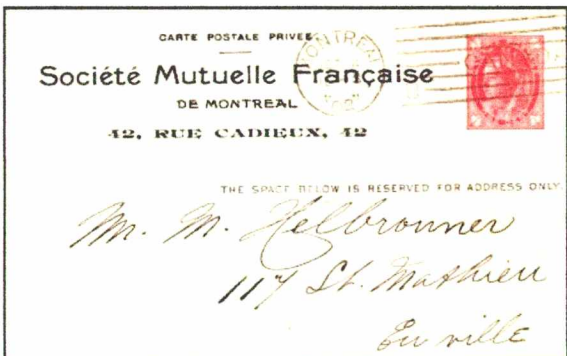
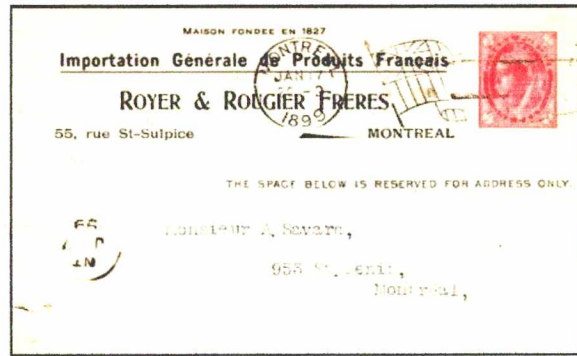


Fig. 7

Finally, some text-only ad cards – all but the last one are from Pierre. Note the Shorey's card in particular – a long series in English, but this is the only Francophone example I have seen (and the only one with black ad text added to the red).



We'll continue in the next issue with Edward and George V items.



**PCF Corner**

*Robert Lemire*

[as of the end of January]

Mercifully, there are only a few new items this time.

**New reports of cards with the 1995 flag indicium, die IIIc on older views (as of 2010-01-23).**

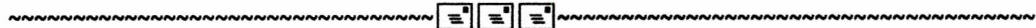
These are reports received since mid November 2009 (Ken and Sandra Eadie, Earle Covert and Raymond Gagné).

**PCF-T3H (borderless)**

C 096          CR 221V          CY 084

The borderless C 096 is oriented with stamp impression at the same end of the card as the top of the view; C 096V (the view with a white border, and the stamp impression at the same end of the card as the bottom of the view) was reported earlier. Also VQ 103V, die IIIc now has been reported in both orientations.

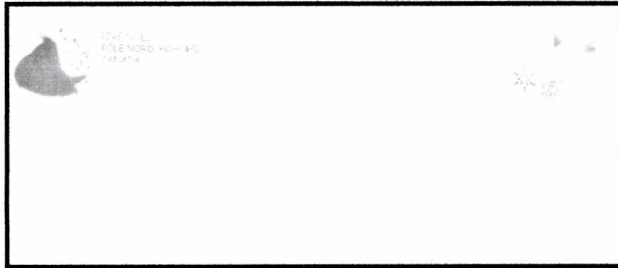
Please send new reports to me (Robert Lemire: [rlemire000@sympatico.ca](mailto:rlemire000@sympatico.ca) ).



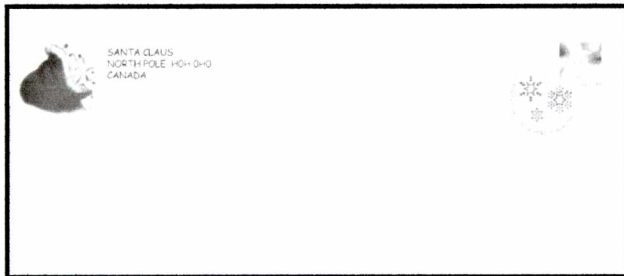
**2009 Santa Letters from Postal Code H0H 0H0 Redux**

*Earle Covert*

**CANADA'S 2009 SANTA LETTER ENVELOPES**

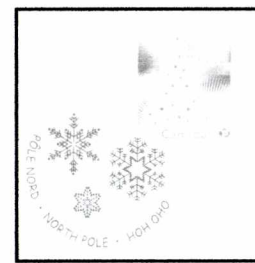


**FRONT AND BACK OF FRENCH SANTA LETTER ENVELOPE**



**Front And Back Of English Santa Letter Envelope**

Canada Post Corporation has decided to number all their Santa Letter Envelopes again in 2009. However, compared to 2008 the numbering is very complex. I had originally seen that the envelopes on the top of bundles of 15 or 25 of the English envelopes had “\*\*” or “\*” respectively after the numbers.



**English & French Stamp And Precancels**

Andrew Chung was able to figure out more of the pattern. The Prefix of the number on the back of the envelope corresponds to the letter inside.

The large size Classroom Letters and Envelopes have been reported but I have not seen them. The reports are that they are not numbered.

A clerk in Northern Alberta showed me a shipping list on December 23. She had not received all the available types. The list is as follows: -

- EB1 = English before Christmas #1 letter
- EB2 = English before Christmas #2 letter
- EA = English after Christmas letter
- EE = English Empty (for use with letter with the 2009 picture which only has H0H OH0 and is therefore considered bilingual)
- FB1 = French before Christmas #1 letter
- FB2 = French before Christmas #2 letter
- FA = French after Christmas
- FE = French Empty (for use with letter with the 2009 picture which only has H0H OH0 and is therefore considered Bilingual)

Every time we found a new source, the combinations of "\*" after the numbers became more complex.

We will illustrate the French Before Christmas #2 envelope to show the two combinations of asterisk that I have seen. Then I will list the numbers with all the combinations I have with asterisks after them.

|     |                  |                 |
|-----|------------------|-----------------|
| EB1 | EB1-0064001 *    | EB1-0531459 **  |
| EB2 | EB2-0640818 *    | EB2-0663868 *** |
| EA  | EA-1162463 ****  | EA-1796550 *    |
| EE  | EE-1201228 ****  | EE-1240188 **   |
| FB1 | FB1-1333428 **** |                 |
| FB2 | FB2-1580297 **** | FB2-1581222 *   |
| FA  | Not seen         |                 |
| FE  | Not seen         |                 |



**FB2 = French before Christmas #2 letter – Both sets from Ontario**

Mike Street arranged to have Adri Veenstra in the Netherlands and Leif Danielson in Sweden write to Santa Claus just before Christmas. Both got replies in an EA envelope (without an asterisk) but unfortunately the letters were in English. We know that Canada Post about 10 years ago had the letters translated into at least Dutch as I have copies of the letters.

**COMMENTS**

- Only one Post Office had envelopes bundled and numbered in batches of 15. The others were in bundles of 25. The first numbered envelope in each bundle had one or more asterisks after the number.
- There appears to be no consistency in the starting number of the envelopes in the bundle. All the bundles in a set (for example FA2) did not have the same number of asterisks after the number.
- What is the meaning of the asterisks? Are these counters similar to the bars on the booklets of 30 – 35 years ago?

Please report any additional combinations found to [ecovert@telesplanet.net](mailto:ecovert@telesplanet.net).