

Postal Stationery Notes

Volume 22 No. 4

March 2009

PSSG News

WE LOSE A GOOD FRIEND: PETER ZARIWNY ~ 1922 - 2008

Earle Covert & Keith Spencer



Photo courtesy MSagar

Peter Zariwny passed away peacefully on November 20th, 2008 at age 86. He was predeceased by his parents and two sisters. A Memorial Celebration was held at the Edmonton Ukrainian Centre on December 1, 2008.

Peter was born and lived in Alberta all his life. His parents came from West Ukraine and homesteaded near Thorhild. They were among the unsung Canadian heroes who broke the land. Peter's father died early in life and Peter took over responsibility for the farm.

He then worked at the Thorhild Co-op for a time, before moving to Edmonton in 1960. There he opened a barbershop on 97 St. and 123 Avenue, and continued this for 35 years. He owned both a beauty shop and a Laundromat. He retired in the 1980s, but continued cutting hair for a few men in his basement suite, where he had a barber's chair in his office.

Most of us knew him as a philatelist. Peter was an ardent member of the Edmonton Stamp Club for many years, where he seldom missed a meeting. He was a very keen collector. He originally had a world-wide collection and a good collection of the Ukraine. He then started collecting booklets, but sold those after he came across a copy of *Webb's Postal Stationery Catalogue of Canada and Newfoundland* and started on his quest to collect everything in it. Ultimately he did, with the exception of railway view cards. He was very enthusiastic and thorough. He studied the literature, corresponded with people and established relationships and friendships everywhere based on his postal stationery interests. Philately was his contact with people.

Earle remembers:

“Once when Peter was going to be away for several months travelling across Canada, he took me up to a Federal Government office in Edmonton to introduce me to the office staff. He wanted me to collect the Xpresspost and Priority Post envelopes in a month's time, when I was back in Edmonton, to be sure they would continue to keep them for him. He collected envelopes from them for 7 or 8 years until the Privacy Law forced the offices to destroy them rather than give them to Peter.

“Peter developed rapport with staff in over 40 post offices in the Edmonton area. He told me they would tolerate “an old man” looking through their stock of Xpresspost and Priority Courier envelopes and in the last few years he also looked for Postcard Factory postcards. He kept meticulous records of all the different form changes and dates.

“Two or three times a year we would meet and he would give me a shopping bag full of envelopes with the receipts and the list in an envelope. I would give him a cheque and often an advance. Many of the envelopes which are in the collections of Bill Walton, Art Klass and myself came from Peter. After Peter lost his driver’s license because of his failing eyesight, he was very apologetic that he was having problems getting to all the post offices to find the envelopes.”

Peter had the patience to sit for hours at a show and look through every box at every dealer looking for items that he needed. He would go to both Wildrose and Bob Lee Auctions to chase items he needed. He took quiet delight in showing me his latest acquisitions. Often, he had questions that I couldn’t answer. Peter was always trying to find something not listed.

Peter was a good lesson in getting full value out of one’s collecting. He really enjoyed his collecting. He had fixed up his old van to live in simply while travelling, and he travelled around Alberta and into BC and even took a trip to Eastern Canada, visiting dealers and collectors. It was a window of opportunity through which he built many friendships and relationships.

We will all miss Peter’s friendship, patience and persistence.

~ ☒☒☒ ~

Zariwny Material in Auction:

Hopefully some of you have been paying attention to Mike Sagar’s recent auctions of Peter’s collection. Mike scheduled it in three parts, two of which have already occurred. Mike reports considerable interest and bidding on the material. These sales were held on Ebay under Mike’s Ebay handle Moonguy [search by seller in the Advanced search]. Look for the third part which will occur in early April, and will include precancel post cards, railway flimsies, Eaton’s cards, private rouletted post cards, sepia viewcards, wrappers, aerogrammes, and the balance of Newfoundland. You can see these sales as well on Mike’s website at <http://www.postalstationery.ca/>. Take a look at unsold lots – you might find something someone else missed.

Mike adds: “I knew that Peter was widely known, but I was pleasantly surprised to hear of the bits and pieces of remembrances of Peter that [bidders] offered me. He was obviously a correspondent of no equal, and was liked and respected throughout the hobby. I will be passing on these comments to Peter’s family. If only we could all leave such a positive legacy.” Thanks, Mike, for securing the nice picture of Peter for us.

~ ***** ~ ☒☒☒ ~ *****

~

PSNotes Contact information for articles [PLEASE!], news or reports: John Grace, our Secretary-Treasurer, and contact person for the study group (jandmgrace@sympatico.ca 734 Aspen Rd Pickering ON, L1V 4H2). Jean Walton (jwalton971@aol.com ; 125 Turtleback Rd, Califon NJ 07830) , layout/copy editor for Postal Stationery Notes. Robert Lemire (rlemire000@sympatico.ca PO Box 1870, Deep River ON, K0J 1P0) continues to act as interim chairperson; *we are still searching for a full-time chairperson.*

PCF Corner

Robert Lemire

The reports of Postcard Factory® cards with the 1995 flag die IIIc indicium continue to flood in, along with several more reports of cards with die IIIb. Also, Earle Covert has reported finding a copy of CY046 (not CY46), 1995 flag die Ia, individualized bar code (ending in 60038, Figure 1), no printed SKU#. This is one of five of the original 84 postage prepaid PCF cards not reported until now in this form (the others are ATC209, ATC210, ED032, WED007). This CY046 view already had been reported from two presumably later printings (having the leaf indicium, with and without a printed SKU#). As for the other four views, keep looking!

Probably the most interesting new card, reported by Alain Bisailon, and rapidly confirmed by Raymond Gagné, is a new “view”—or not actually a “view”, but a reproduction of an illustration of the Chateau Frontenac Hotel in Quebec City. It is CP 017 (1995 flag indicium, die IIIc), and has the SKU number 260335. Shown below (Figures 2 & 3), this card is based on an earlier card (without a stamp impression, Figures 4, 5 & 6) used by Canadian Pacific (now Fairmont) Hotels. This new PCF card has *two* bar codes. One is top-centre and the number is from a sequence not seen before on PCF cards. The other is at the bottom left, and the number is identical to the bar code on O 042, the Algonquin Park PCF card. The PCF logo and address is the same seen on the revised (“Fairmont version”) of CR 150 (and therefore different from what was printed on all the other PCF cards).

New Reports (as of 2009-02-19)

These are reports received since early October 2008 (Ken and Sandra Eadie, Earle Covert, Pierre Gauthier, Clarence Wigmore, Alain Bisailon, Raymond Gagné, Brian Cannon, Robert Lemire and Dick Staecker).

1995 flag indicium, die Ia (individualized bar code):

CY046

1995 flag indicium, die IIIb

PCF-T2G (with white border)

C327
NFLD011
RP001
VCT073

PCF-T3G (borderless)

NFLD 020V PEI 096V
NFLD 069 VCT 042
NFLD 077 VCT 076
PEI 072

1995 flag indicium, die IIIc (except those marked †, these views are also known with die IIIb)

PCF-T2H (with white border)

C005
C085
C086
C096V
CR191
OT022
T141
T171
VQ099V

PCF-T3H (borderless)

BC 020 CR373 OT 051
C 042V G038V Q028
C124 MTL148V Q 048
CP 017 † MTL 153 Q 054
CR030 MTL 187 Q 505V
CR149 MTL 514 T058
CR150 MTL 536 T147 V
CR 249V MTL 547 VAN 190V
CR284 NF 187 VQ103V
CR335 O 197 WHS007 †
OT 034



Fig. 1: CY046, 2005 Flag Indicum, Die Ia with Individualized Bar Code 64392 60038.

Fig. 2: CP 017, the New PCF View ~ Chateau Frontenac with artist's name LR: Painting by Marius Hubert-Robert.

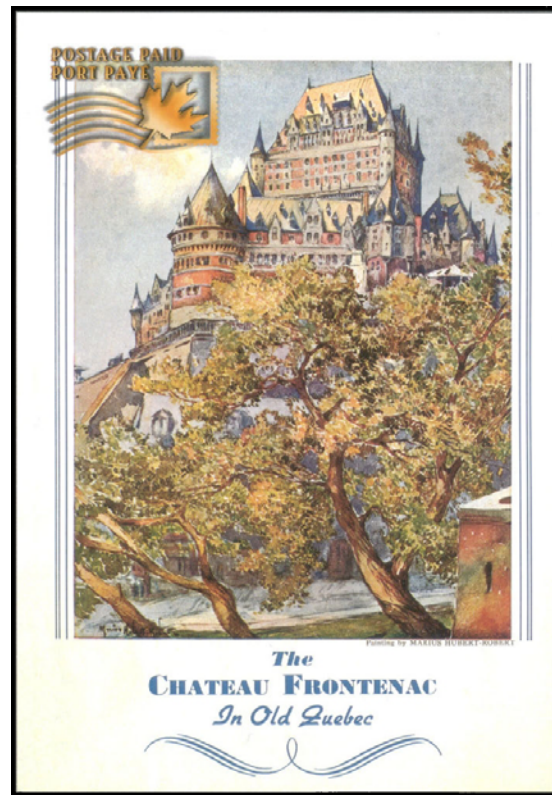
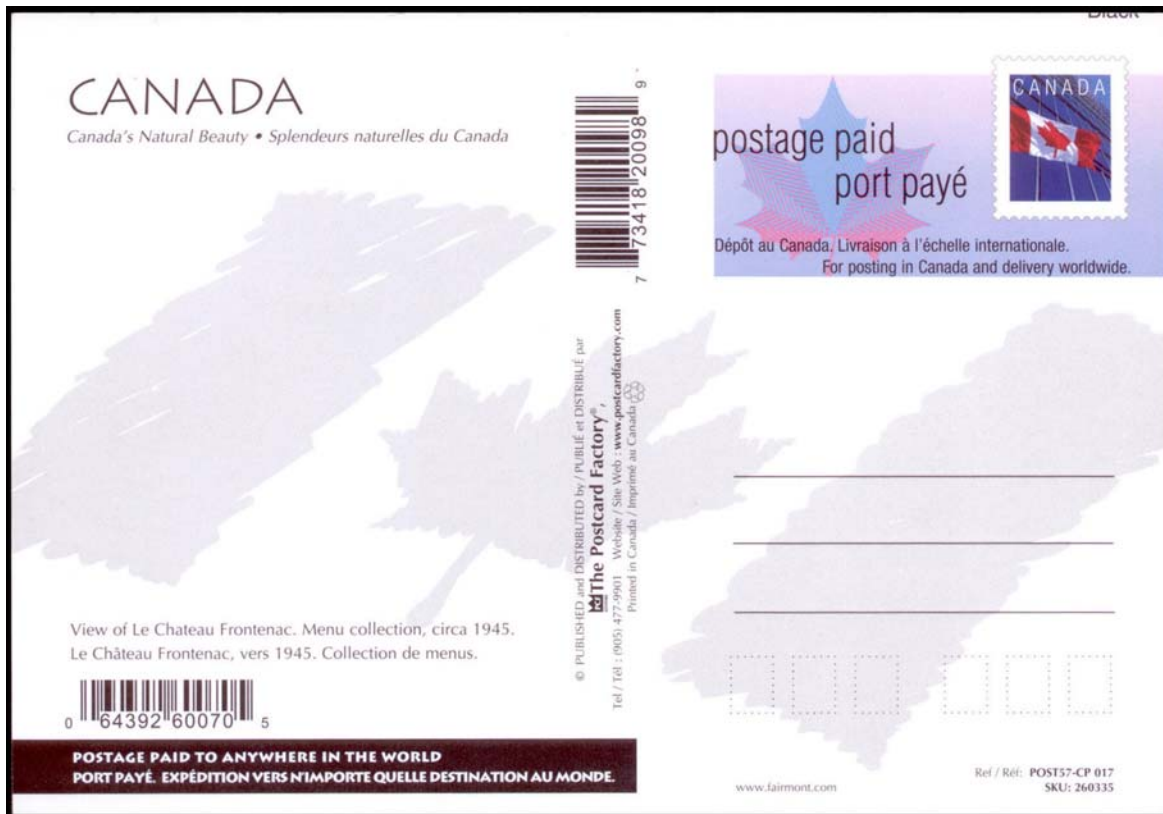


Fig. 3: Address side of CP 017 .



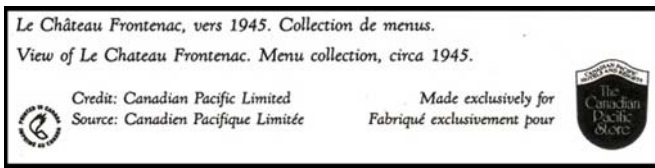


Fig. 4: No publisher noted. Credited to CP Ltd.,
Made exclusively for Canadian Pacific
Stores, with Printed in Canada logo

Fig. 5: View side ~ View of Chateau Frontenac
with artist's name LR:
Painting by Marius Hubert-Robert.

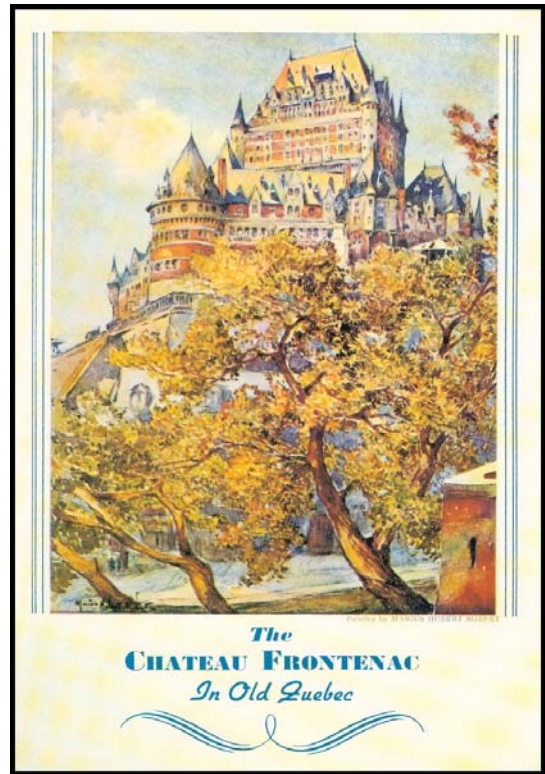
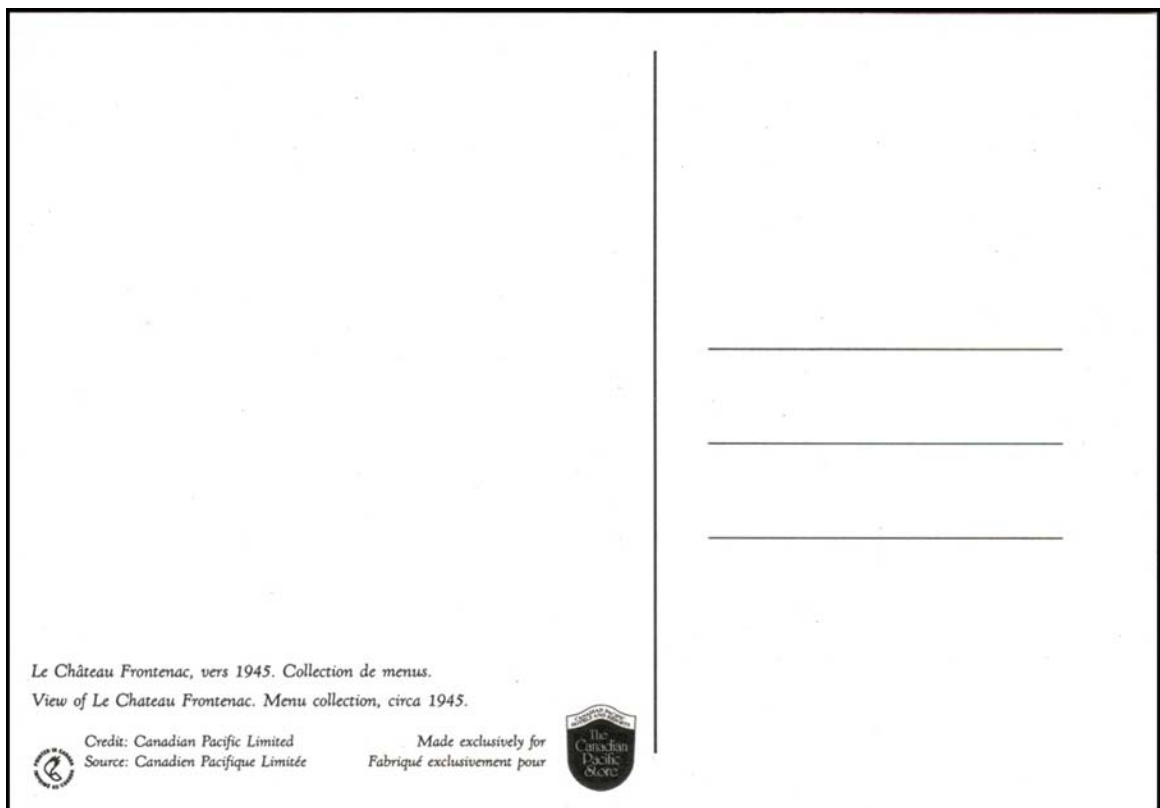


Fig. 6: Address side of the card on which CP 017
appears to be based.

Images courtesy Earle Covert



What's New

in Postal Stationery

New Envelope Dates

Attractions #10 2008.02.15

Flowers #10 2008.07.18

New Post cards issued:

Two post cards have been issued for Chinese New Year, the Year of the Ox – one a vertical card showing an urn, and the other horizontal, showing an ox. Date of issue was January 8, 2009. These were quickly followed by Olympics issues – 5 postage paid post cards showing sports, and 3 showing Olympic mascots. Olympic cards are available from the National Philatelic Centre and online only.

On March 13, 2 more post cards will be issued – a pink and a white rhododendron card, each with matching stamp.

New Envelopes Being Prepared

The latest issue of Canada Post's *Details* provides information on new envelopes to be released on March 9. The ten different "Fishing Flies" and eight different "Orchids and Gardens" will be available in the usual #8 and #10 sizes, as singles and in packs of ten. It is not clear whether these will replace or augment the current "Attractions" and "Flowers" envelopes but, if you collect these by printing date, it would seem to be prudent to pick up any missing items soon.

New Post Cards

Year of the Ox

2009.01.08

2 PP postcards



Sports of the 2010

Winter Games

2009.01.12

5 PP post cards



Vancouver 2010

Winter Games

Mascots &

Emblems

2009.01.12

3 PP post cards



Images above courtesy Earle Covert

Rhododendrons

2009.03.13

2 PP post cards*



New envelopes

Orchids & Gardens: *

2009.03.09

8 PP envelopes, sizes 8 & 10



Fishing Flies: *

2009.03.09

10 envelopes size 8 & 10



Both envelope sets with eco-friendly Green Initiative symbols.

* *Upcoming issue images from Collections, Spring 09 Canada Post*

The 2008-2009 Canada Post Freestyle Team

Earle Covert

In January 2009, posters appeared in Corporate Post Offices all across Canada promoting Regional, National and USA Xpresspost Envelopes plus Regional and National Priority envelopes with pictures of Canada's Freestyle Ski Team. Canada Post Corporation is a sponsor of the Team. Previously in 2005 – CPC issued 12 Xpresspost Envelopes promoting sponsorship of the members of the Freestyle Ski Team and 2 Priority Courier Envelopes for members of the Speed Skating Team.

So far (February 18) we have seen 2 padded Standard sized Xpresspost envelopes and a Pack sized Regional Xpresspost envelope. The Regional Pack sized and the National Padded Standard sized Xpresspost Envelope shows the five members of the World Cup Team – Men's Aerials. The National Padded Standard sized Envelopes show the three members of the World Cup Team Women's Aerials.

There are departures from the past. The coloured bars behind the Regional and National are all grey-silver. Previously the Regional Envelopes had some shade of purple.

The pack sized is of good quality printing with seven logos on the back. See the illustration. The opening is at the top but has a single plastic strip inside to promote a smooth open when the "PULL HERE / TIREZ ICI" tabs are pulled. The last few issues would open with a saw-toothed strip pulled out. Under the side flaps I can read "NO INK / NO VARNISH" plus coloured bars on one side and an unreadable (looks like an E and O joined) logo and the 142202 SKU # on the other. SKU = the CPC stock-keeping number. The date is 08 with a missing 12 in the clock face with (08-11) all in red under the clock face. Apparently the (08-11) means the design was changed in Nov 20 08 and the printing was done in December 2008.

XPRESSPOST honoring the 2008-2009 Canada Post Freestyle Team.



Fig. 1: Front of Pack sized Regional Xpresspost.



Fig. 2: Back of Pack sized Regional Xpresspost.



Fig. 3: Front of Standard sized Regional Padded Xpresspost. The 3 images are the Women's Aerial Freestyle Team.



Fig. 4: Front of Standard sized National Padded Xpresspost. The five images are the Men's Aerial Freestyle Team.



Fig. 5: Padded envelope backs. The interior appears to be shredded paper, not bubble plastic. The printing is poorer quality than the previous issues. The clock faces are almost hidden under the edges. The envelopes open from different ends.

Logos



Fig. 6: Emblems and eco-symbols appearing on the back of non-padded Xpresspost envelopes.

PRIORITY POST



Image courtesy Dick Staecker

Fig. 7: New Priority envelope for Regional mail, with Women's Moguls images celebrating the 2008-2009 Canada Post Freestyle Team.

All the envelopes, both Xpresspost and Priority, seen so far have the band of colour in silver.

The two Padded Regional and National Standard sized Xpresspost envelopes are obviously designed to be as “green” as possible. There is no plastic in these envelopes. The inside is unbleached light cardboard. The padding appears to be shredded paper. When viewed from the back the Regional Envelope is open at the left and the National is open from the right. The back of the open end is folded back and glued to the outside of the back to give a surface for the self-adhesive flap to adhere to. The clock face with 08 and no missing numbers with (08-11) all in black is almost completely hidden under the right folded-over flap. There are three logos on the back all related to recycling and the environment. The printing is not as good quality as the Pack size.

So far (March 5) –between Robert, Dick Staecker and myself – we have seen the following: -

XPRESSPOST:

Men's Aerials	1. Standard Regional	2. Letter National	3. Pack Regional	4. Standard National (padded)
Women,s Aerials:	1. Standard National	2. Letter Regional	3. Standard Regional (padded)	4. Pack National (padded)

PRIORITY:

Women's Moguls	1. Letter Regional
----------------	--------------------

I have not seen the PRIORITY envelopes. Looking at the pattern, however, when the PRIORITY Letter National is found it should be Men's Moguls. Then there is US Xpresspost and I don't know what they will be. Other envelopes are to follow.

The Shopper's Drugmart Small Sized National Xpresspost

Earle Covert

In the fall of 2007, Shopper's Drugmart sold two designs of a small sized National Xpresspost envelope which was big enough to contain a greeting (Christmas) card and/or a gift card. These were hung by a hook on the greeting card rack in the store rather than in the Post Office in many of the Shopper's Drugmart Stores. The sale price was \$3.99 for National Xpresspost. This was a major bargain for this type of service, especially when people discovered that the envelope was big enough to contain a CD or DVD in a thin plastic jewel case. The two pictures showed snowflakes with a Christmas ball (142212), and a bow on blue gift wrap (142213). The clock face had 07 with missing 9 and with (07-07) underneath all in red.



Fig. 1: Small National Xpresspost envelopes – (142212 and 142213) – originally sold for \$3.99, and then offered as a bonus with the purchase of thee large size Xpresspost or Priority envelopes or CPC/Fedex.

Some Drugmart stores sold out the Xpresspost envelopes and they disappeared whereas in other they appeared to reorder the envelopes. They were found in some stores in September 2008.



Fig. 2: 07 Clock with missing 9.



Fig. 3: Added label for those which were included in the “get one free” deal.



Fig. 4: Address side without label (142212).



Fig. 5: Address side with “Not for Resale” label.

In November 2008, Canada Post announced that they would give one of these small sized Xpresspost envelopes with the purchase of three Xpresspost, Priority Courier or the use of Priority CPC/Fedex service until the end of 2008. The envelopes appeared with a self-adhesive sticker with “NOT FOR RESALE / NE PAS REVENDRE” on the back on the left side of the side sealed flap. Some Post Offices still had these envelopes with the stickers and were supplying one freebie with each of the three items in mid February 2009.

These are apparently popular and I was told this size will be added to the available Xpresspost.

Unusual and Exotic Postal Stationery Usages

Bill Walton

The third in our continuing series. Do you have one to contribute?

3. Recovered By Divers from the Wreck of S.S. Empress of Ireland

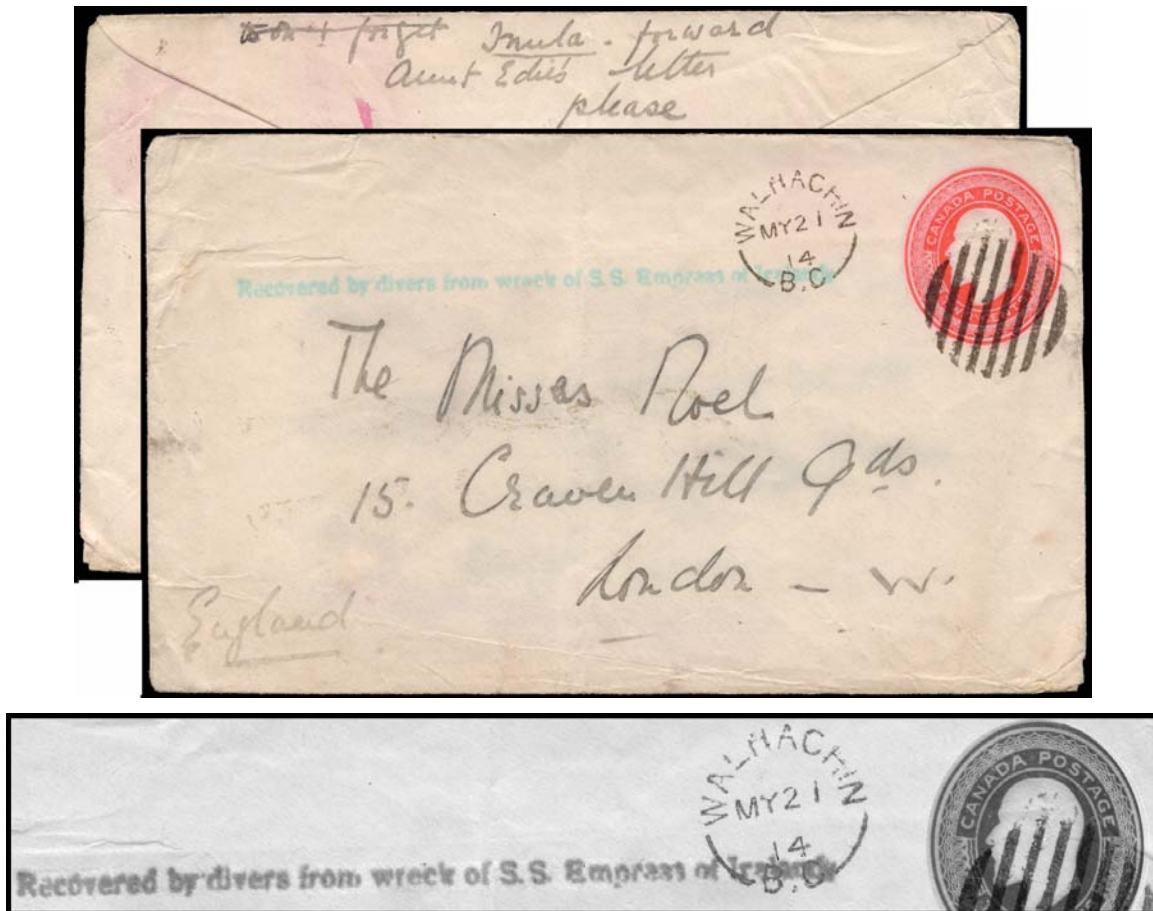


Fig. 1: Webb EN17 (die VI) used with a My 21 [19]14 Walhachin, B.C. cancel, with a "Recovered by divers from wreck of S.S. Empress of Ireland" handstamp in bluegreen. It was recovered from the bottom of the St. Lawrence River after this ship sank. The DLO office in Ottawa subsequently forwarded it under cover to the original addressee. The black and white illustration is shown to highlight the handstamp.

At 4:30 PM on May 28, 1914, *The Empress of Ireland* left Quebec City for another voyage to England. That evening it made the customary stop at Rimouski to take on mail bags for the crossing, and then continued down the St. Lawrence. Around 2:00 AM on the 29th, near Father Point, it was ramméd by the *Storstad*, a Norwegian collier, and in 15 or 20 minutes, sank in 130 feet of water. There were approximately 460 survivors, with over 1000 lives lost.

Divers began recovery work soon after, bringing up bodies, valuables, and mail. These efforts continued for some time. Recovered mail was apparently dried and sorted at Father Point, and those items which still had legible address and were reasonably intact were forwarded to the original addressees by the Dead Letter Office in Ottawa.

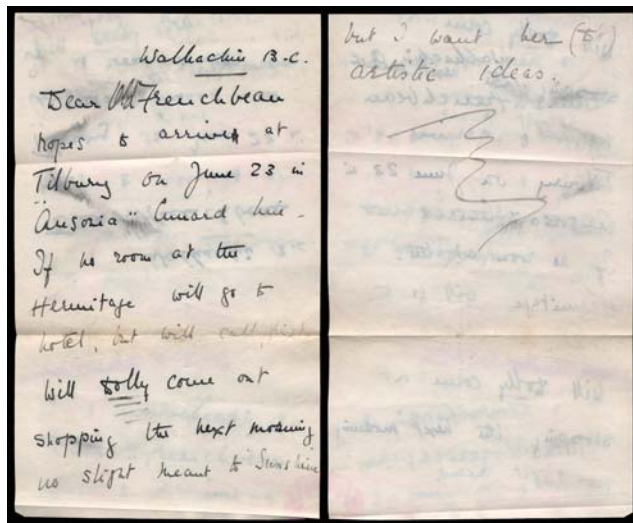


Fig. 2: Enclosed letter shows water damage but is still legible:

Dear old French bean hopes to arrive at Tilburg on June 23 in "Ansonia" Cunard Line. If no room at the Hermitage will go to hotel but will call first. Will Dolly come out shopping the next morning – no slight meant to Sunshine – but I want her (D's) artistic ideas.



Fig. 3: The envelope has of course lost its gum and can be shown opened flat:

The recovered item was typically handstamped with the straightline "Recovered" handstamp seen on the 2¢ Edward envelope in *Figure 1*, then enclosed in a D.L.O. envelope which would have been addressed as the enclosed cover and also struck with the "Recovered" handstamp. These mailings continued as the work progressed, and the outer DLO envelopes are seen with postmarks at least through the end of December, more than 7 months after the sinking.

This cover was originally posted in Walhachin, B.C., on May 21, apparently by one of the upper middle class Englishmen who emigrated to this curious agricultural development (off the subject of this article, but worth Googling for the curious). The letter, to "The Misses Noel," is still enclosed. It was taken on board the *Empress* at either Quebec (more likely) or Rimouski. In ten hours or so, it was at the bottom on the St. Lawrence.

Covers from the wreck may be somewhat scarce but are certainly not rare. I have collected Canadian ship-related mail – coastal and inland as well as high seas – for many years, and have seen a number from the *Empress* disaster. What makes this item notable is that it is the only piece of postal stationery from the sinking that I have ever come upon.

As postal stationery collectors, we are accustomed to plowing through box after box of stationery at shows. Much of it, after all, is quite common, and most of us would not look carefully at used 2¢ Edward envelopes when we got to them. We forget that postal stationery was always a small percentage of the mailstream, but this cover makes the point: if you want a recovered *Empress* cover, you can probably find one in auction or through a dealer within a year, but I have looked over 30 years for another piece of recovered postal stationery.

And that's why they used to call our field a sideline.

New Private Order Eaton's Card

Dick Staecker



At left is an Eaton's card I recently acquired, for their 1964 Summer Sale catalogue pick-up.

I compared the card with my 1964 Spring and Summer Catalogue private-order Eaton's card. The text, the colour of the text and the stamp impression are exactly the same. The white card stocks also appear to be identical – very different from the light buff stock used for the regular-issue P91 cards. However the newly discovered card *is not rouletted*, has the words “ ... 1964 SUMMER SALE Catalogue ...” and has a different back.

Fig. 1: New Eaton's card, not rouletted.

