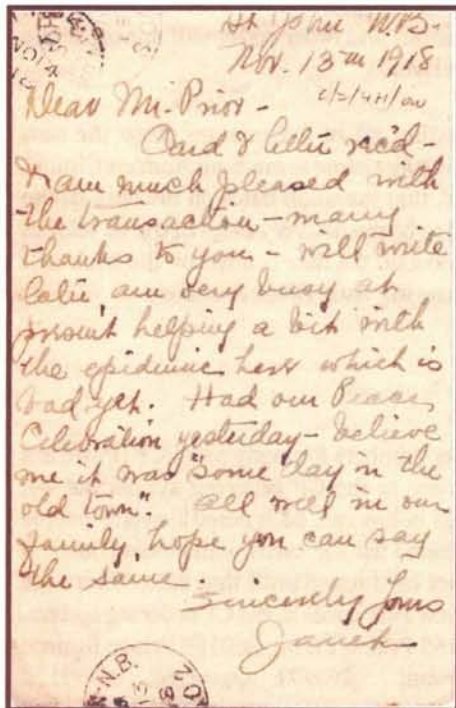


Postal Stationery Notes

Volume 18 No. 5

APRIL 2003



by Hans van Dooremalen Rijen, Nederland

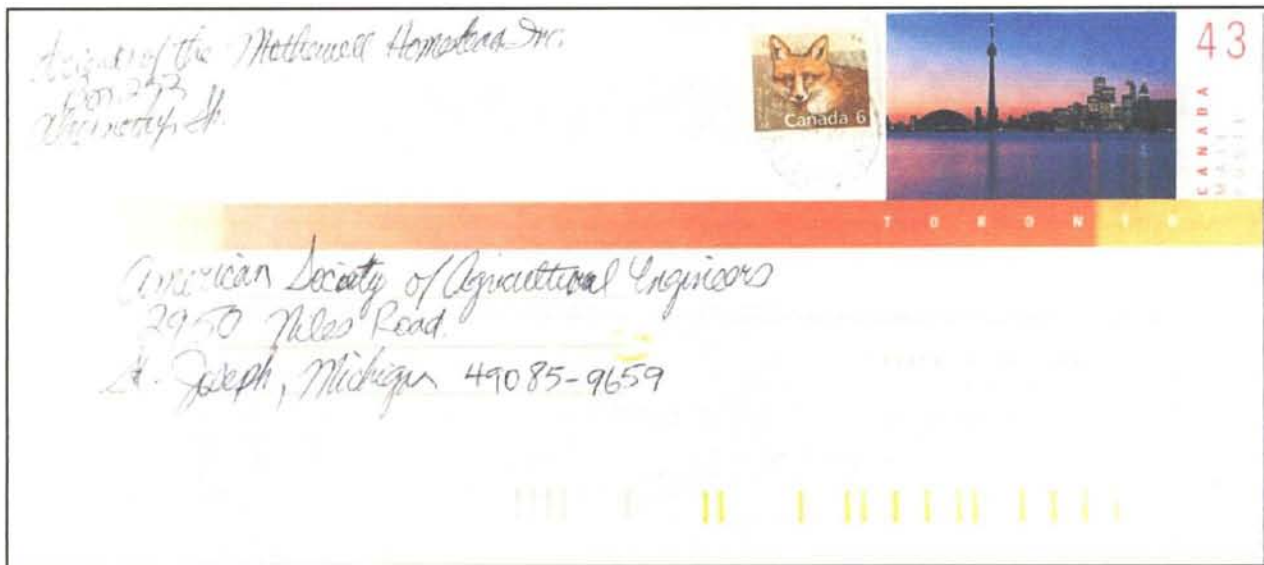
Like member Emile Hoorens from Brussels (Postal Stationery Notes Vol.16#4 (2001), p.31) I sometimes run across interesting Canadian postal stationery items in Europe.

I recently acquired an item which is not only interesting from the viewpoint of postal history but also from the point of history itself. The card was sent by registered mail from St. John, NB to Hartford, CN (USA) at the correct rate of 2¢ for the card and 5¢ for the registration. It was sent on November 13th, 1918 and was received two days later.

The interesting part came when I tried to determine if the nature of the card was philatelic or not. The message first deals with fact that the sender was very busy with the “epidemic”, which is no doubt the big influenza epidemic, which took more casualties than WWI.

Then he writes about the peace celebrations. World War I ended 2 days earlier with the armistice!

This makes this card a very interesting piece of history too.



Editor's Notes

Recently we returned from an extended vacation in Florida and while I was there, I was able to attend BAYPEX 2003 in Clearwater. Looking through a large lot of recent used Canadian envelopes, I spotted a 43¢ Toronto envelope without the red in the orange stripe for about 32 mm on each end (see above). All printing in the back is in the normal orange colour. Has anyone seen similar colour errors ?

Due to a very heavy workload, Chris Elis was not able to do enough research on a #7 segment of illustrated cards.

We are also somewhat disappointed, that after a lot of research and listing of illustrated cards from six different companies, not one member responded. Surly someone must be in the possession of an additional illustrated card, unknown to us, used by any of the listed companies.

Dick Staecker

What's New

in Postal Stationery

ENVELOPES

by William R. Geijsbeek

A number of collectors have been looking for the #8 American Goldfinch envelope with date code 2002-11-01 without much luck. Canada Post assures

me that both the #8 and the #10 envelope were printed with this date code. So, until old stock is sold and new stock works its way through the distribution system, we must be patient.

While you are looking for the above, look for the new 2003.02.03 (dots, not dashes) date code on both #8 and #10 envelopes. Both of these exist, according to Canada Post. Talk about being patient. And then, there are the new designs coming out - but read below.

Two new designs for non-denominated stamped envelopes (one for each size) will appear on May 15, 2003. The new envelopes will have self-seal flaps and date codes. Designs and order codes will appear in the March issue of Details.

Another interesting bit of information about the new prestamped envelopes came to me from Andrew Chung, who mentioned, that the small dates on the back of the envelopes used to be the delivery dates of the envelopes and that from now on the date printed on the back will be the manufacturing date. (*Dick Staecker*)

CARDS

by William R. Geijsbeek

The order numbers for many new PCF (PostCard Factory) cards are in the CP ordering system but ---. The cards listed below can be ordered (several people have ordered them) but the cards with release dates of May 1st will not be shipped until that date. There are also six other new PCF cards in the CP ordering system. They are: 260165 Prairie Farm; 260169 Prince Rupert; 260170 Kelowna; 260171 Ogoogo; 260172

Okanagan; and 260173 Birds. These cards have not yet been ordered from The PostCard Factory as Canada Post is not satisfied with current possible images. Only time will tell if they are ever issued but if they are, it appears that it will not be in 2003.

Tourism Prestamped Cards

A set of ten 2003 Tourism prestamped cards will be released (along with their postage stamp counterparts) on June 2, 2003. Canada Post has stated that they plan to keep the most popular views of the 2001 and 2002 Tourism prestamped cards available by reprinting them as needed. Canada Post has also reported that there will be no difference between the reprints and the original printings. The card stocks for the 2001 and 2002 cards differed, so we shall see.

PCF Cards

Following is the list of 19 new PostCard Factory prestamped cards to be released in 2003. The release date for the three Tofino cards is February 28th. The balance of the cards are to be released on May 1st. All 19 cards will be available through Antigonish. CP order numbers are also given.

The Percé Rock card (260154), which was recalled because it had a printing error, is now scheduled to be re-released in March/April. It will not be available through Antigonish but only through post offices in the Gaspé area.

British Columbia

- 260151 Tofino Humpback
- 260152 Tofino Chestermans Beach
- 260153 Tofino Cox Point

Alberta

- 260168 Alberta Badlands
- 260167 Alberta Natural Resources
- 260163 Drumheller Dinosaur
- 260162 Edmonton night

Prairies

- 260166 Grain Elevators

Manitoba

- 260164 Bison

Ontario

- 260159 1000 Islands Boldt Castle
- 260155 Lake Ontario 30,000 Island
- 260156 Lake Ontario water run
- 260158 Stratford aerial
- 260157 Kingston marina

Quebec

- 260119 Madeleine
- 260161 Gatineau – Mackenzie King

Estate

- 260160 Gatineau – Civilization

Museum

PEI

- 260121 Charlottetown harbour

Nova Scotia

- 260124 Halifax skyline

XPRESSPOST

A 2,8 % fuel surcharge will be added to all Xpresspost items by Canada Post starting April 7.

» « • » «

DUES: Postal Stationery Study Group dues are Can. \$8.00 or equivalent per volume of six issues.

Dues are now payable if your mailing label reads V18#1. Please renew soon and make your remittance payable to 'JOHN GRACE' not to BNAPS or the Postal Stationery Study Group.

Dues or any change of mailing address should be sent to the Sec./ Treasurer John Grace, 734 Aspen Rd. Pickering, On. L1V 4H2 E-mail jandmgrace@sympatico.ca

All information for the newsletter, and correspondence about the study group, should be addressed to Dick Staecker, 384 Regal Drive, London, On. Canada N5Y 1J7, phone (519) 455-9715, E-mail may be sent to dstaecker@rogers.com

❖ ❖

PREPAID LABELS

These prepaid labels newly discovered by Chris Ryan are:

- 1. Regular Standard. Regional for small packets up to 1.36 kg, dated (98-01)
- 2. Expedited Parcel. Regional for parcels up to 5 kg, dated (00-08)

01447368

CANADA POST / POSTES CANADA

Regular Standard

From Expéditeur
SAMUEL FRENCH LTD
100 LOMBARD ST LOWER LEVEL
TORONTO ON M5C 1M3

PAID UP TO PAYÉ JUSQU'À
1.36 kg / 3277 cm³
REGIONAL
Small Packet Petit paquet
CUST # 0001117203

To Destinataire

PRINCIPAL
RUNNYMEDE COLLEGIATE INSTITUTE
569 JANE ST
TORONTO ON M6S 4A3

41-016-333 (98-01)
CODE # 1871L

CANADA POST / POSTES CANADA

Expedited Parcel Colis accéléré

2

CANADA POST / POSTES CANADA
PAID UP TO PAYÉ JUSQU'À
5 kg / 30,000 CM³
RÉGIONAL
CUST 0001897276

From Expéditeur
SOLUTIONS POSTALES
344 BOUL BOURQUE
OMERVILLE QC J1X 4G1

GG 946 169 210 CA
Shipper: Expéditeur: Do not remove. Ne pas enlever.

To Destinataire

562 NS

RUNNYMEDE COLLEGIATE INSTITUTE
MS DARLENE FREEMAN
569 JANE ST
YORK ON M6S 4A3

ATTENTION

189-01 015-98726
CODE # 1891

M6S 4A3 2 *MA

01180304
LBL53

POSTAL STATIONERY ?

A lot of questions have been ask about the two cards shown below. These cards turned up over the last two year in some dealer stock unused and used. The one card has "47" in the upper right and "forty-seven/ CANADA" on the bottom of the stamp impression. The other card has "48" in the upper right and "forty-eight/ CANADA" on the bottom of the stamp impression.

Bill Geijsbeek contacted the printer of these cards and he found out the following information:

"Streetcards Promotions Ltd. | The Postcard Company" is an advertising firm based in Vancouver. They printed a series of these cards, some with faux stamps on them, that were placed in the hallways/corridors/restrooms of better grade restaurants (etc.) in the greater Vancouver area.

Unfortunately the stamps looked "too real". When Canada Post found out, they put a quick stop to it. When I learned of this venture (about two years ago), I tried to get some of these cards from Streetcards Promotions but was too late as they had already destroyed their remaining stocks.

These cards exemplify Canada Post's concerns - the stamps were too real! Some got mailed but, of course, they are not postal issues. NICE Cinderella item!!

Want more
attention?

Event planners, restaurants, galleries, retailers, artisans, e-commerce businesses, night clubs, schools, outdoor adventures, travel destinations, and more keep coming back to Streetcards. Call us to find out why.

Our distribution network
We can display your cards in our rack network or blanket the city by placing your cards in hundreds of locations! National distribution also available. Ask for details.

Printing and Display Special
3,000 4x6 cards - \$425¹ 6,000 4x6 cards - \$700¹

¹Based on receiving final digital file to Streetcards' specifications. Prices include printing and distribution. Taxes and delivery extra. Colour proof (if required) \$15. Display of minimum 75% of cards required. Not valid with any other discounts or specials. Present this card to redeem offer. Offer expires June 30/03.

Air Mail Par avion

1.888.868.0488 toll-free 604-602-0488 local
info@streetcards.ca www.streetcards.ca

The card above, owned by Clarence Wigalso, with "47" in the stamp imprint was mailed to Iraq with a 78¢ Beluga postage stamp added to make up the international rate of \$1.25.

Below is a photo copy of a similar card as shown before, but instead of 47, it has "48" in the upper right and "forty-eight" above "CANADA". The mask on the right is the same on the back of both cards.

Want more
attention?

Event planners, restaurants, galleries, retailers, artisans, e-commerce businesses, night clubs, schools, outdoor adventures, travel destinations, and more keep coming back to Streetcards.
Call us to find out why.

Our distribution network
We can display your cards in our rack network or blanket the city by placing your cards in hundreds of locations! National distribution also available. Ask for details.

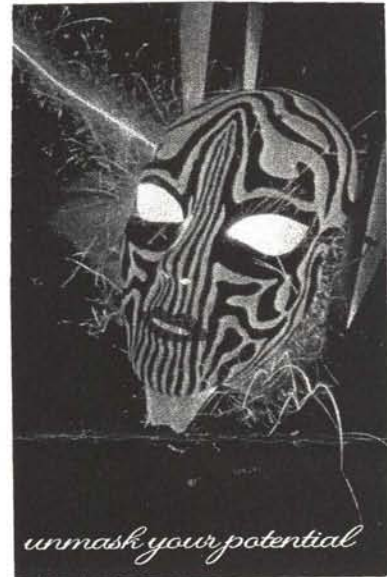
COVER PHOTO Patrick Koslo www.lightography.com 604.685.9747

POSTES
CANADA
POST
CANADA
2002-05-20
MONTREAL, QC
H4A 1X0

GORDON BROOKS
P.O. Box 396
STATION N.D.G.
MONTREAL, QUEBEC
H4A 3P7

Street
cards

1.888.868.0488 toll-free 604-602-0488 local
info@streetcards.ca www.streetcards.ca



A new find of a Bulova illustrated card from Charlottetown, P.E.I. on a 1¢ green King George card without heading. I will be listed as #118 on John Grace's list.

FOR GRADUATION

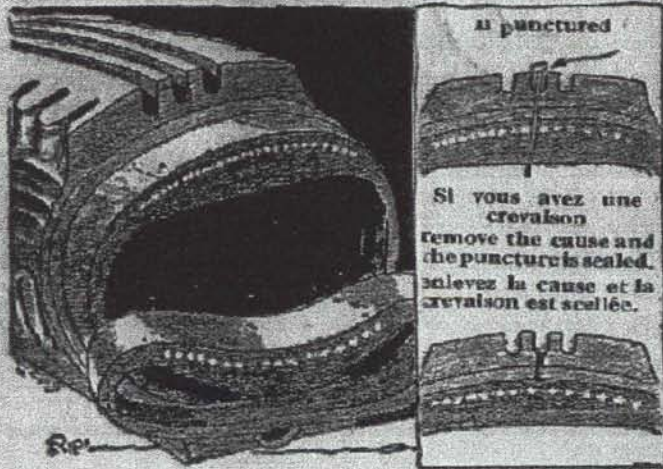
BULOVA
Canada's Greatest
Watch Value!

W. W. WELLNER LTD.
Jewelers Since 1868
CHARLOTTETOWN, P. E. I.

GODDESS OF TIME
17 jewels
\$39.75

LEXINGTON
17 jewels
\$49.50

CROYEZ-LE ou NON par Ripley



Une Nouvelle Invention Etonnante Goodrich!

L' "Air-Container" scelle les crevaisons sur les roues en marche et abolit les éclatements.

Les chambres à air ordinaires et les crevaisons sont maintenant passées de mode. Ces "Air-Containers" remarquables en plus d'éliminer 90% des troubles avec vos pneus, ajoutent 30% à la durée de vos pneus.

Entrez en passant et voyez la démonstration à l'aide de la "coupe transversale."

Venez nous voir, nous possédons le récit détaillé du fait extraordinaire ci-dessus.

BELIEVE IT or NOT by Ripley Amazing New Goodrich Invention!

The air container seals punctures on running wheels and abolishes blowouts.

Ordinary tubes and punctures are now old-fashioned. These remarkable air containers, besides eliminating 90% of your tire trouble, add 30% to the life of your tires.

Come in and see the "cross-section" demonstration.

GARAGE MODERNE, ENRG.

rue St. Germain Ouest - Rimouski

Drop in, we have the full story on the above unusual fact.

CROYEZ-LE ou NON



Les ingénieurs ont récemment prouvé le caoutchouc plus résistant

Le même caoutchouc résistant dans les pneus Silvertowns, a pu supporter de parcourir 30,000 milles sans que le pneu ne manque.

Les Silvertowns ne coûtent pas plus que les ordinaires.

Entrez en passant, nous possédons la démonstration extraordinaire ci-dessus.

BELIEVE IT or NOT

The Rubber in SILVERTOWNS is the same as in the best tires. Recently Goodrich engineers discovered a new rubber that makes it 10 times more resistant to abrasion than steel.

The same tough resilient rubber enabled the famous Silver Fleet to run 10 months without a tire failure. Silvertowns cost no more than ordinary tires.

GARAGE MODERNE

rue St. Germain Ouest

Drop in, we have the full story on

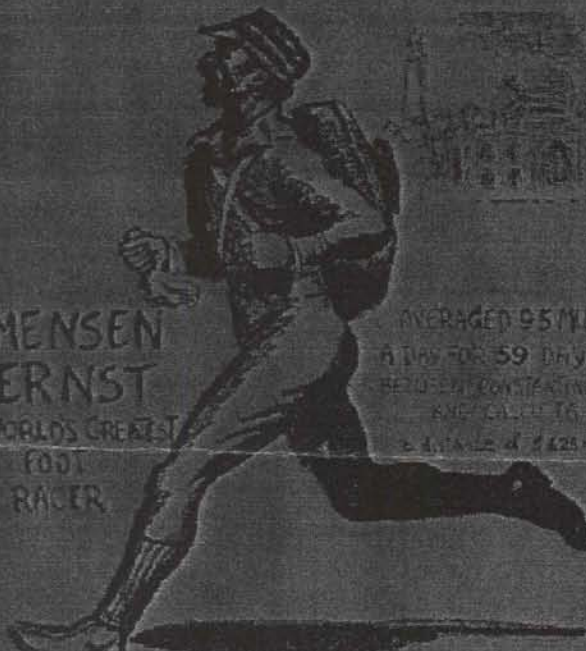
On page 48 Vol. 17 - No. 5 in "Odds 'N' Ends" John Grace showed the back of a 1¢ green Arch issue card with colourful "Goodrich Tires" advertising by Loveseth Service Station.

More of these "BELIEVE IT or NOT by Ripley" cards were reported by Pierre Gauthier. All are on the same 1¢ green Arch issue.

1. Bilingual, used in Rimouski, Quebec, on August 10, 1932. Printed in black on yellow and used by Garage Moderne.

2. (only a vertical half is shown) Bilingual, used in Rimouski, Quebec, on August 17, 1932. Printed in black on pink and also used by Garage Moderne.

BELIEVE IT or NOT by **RIPLEY**



MENSEN ERNST
WORLD'S GREATEST
FOOT
RACER

AVERAGED 95 MILES
A DAY FOR 59 DAYS
BETWEEN PORTLAND, OREGON
AND CALIF. TO
A DISTANCE OF 7,425 MILES

62 SILVERTONS TRAVELLED 1,866,944
TIRE MILES THROUGH 46 STATES AND TERRITORIES A TRUE ONE
DROUGHT OF THE TALKERS — THE NATIONAL TOUR OF THE
FAMOUS GOODRICH SILVER FLUET
MAY YOU HAVE BLASTED BY THEM AT THESE FAMOUS TIPS
ON YOUR OWN AT THE END OF THE ROAD — FINE!

W. H. FULTON
20 Alberta Street
Phone 374

GALT ONTARIO

"WOULD YOU LIKE THE FULL STORY ON THE UNUSUAL
FACT DEPICTED ABOVE? DROP IN, WE HAVE THE DETAILS"

BELIEVE IT or NOT



IT TAKES 20 YEARS
TO PRODUCE THE
RUBBER FOR THE
FOUR TIRES ON YOUR
CARRIAGE

DESPITE THAT FACT
FIRST-QUALITY GOODRICH
EXCEPTIONALLY LOW

SIZES	COMMAND
29x4.40	5.80
30x4.50	6.25
28x4.75	7.70
29x5.00	8.25
30x5.00	8.40
29x5.50	

Loveseth
SERVICE STATION

"WOULD YOU LIKE THE FULL STORY ON THE UNUSUAL
FACT DEPICTED ABOVE? DROP IN, WE HAVE THE DETAILS"

3. English only, used in Galt, Ontario, on June 29, 1932. Printed in black on orange and used by W. H. Fulton. (on a P43 card)
4. English only, used in Edmonton, Alberta, on July 27, 1932. Printed in black and yellow and used by Loveseth Service Station. (on a P43 card)

WANTED

MATERIAL FOR THE NEWSLETTER

REWARD: 10 PAGES OF POSTAL STATIONERY NOTES

ODDS 'N' ENDS

BY JOHN GRACE
ODDS

#35.

We have had a reply from Leland Brown of Unity, Saskatchewan about Odds 'n' Ends #19. **Meter number 83176** was assigned to Babcock Wilcox and Goldie McCulloch of Galt, Ontario, and used by them for many years in the 1940s and 50s. So our question is answered. The revaluing of the post card was done by the company. (No illustration)

#36.

Here is a new Bulova card reported by Peter Zariwny in August 2002. The card is **Webb P66 1¢ green George VI**, used in Charlottetown, Prince Edward Island on June 2, 1951 by **W. W. WELLNER LTD.** The back is the FOR GRADUATION design used by Akemi Jewellery of Toronto, presumably in the same year. The total of known Bulova cards is now 118.

#37.

The Montreal Brass Works, Robert Mitchell & Co. put this busy illustration on the back of **Webb P9 the 1¢ ultramarine QV First Rosette Issue**. Printing is in gold and is quite impressive

#38.

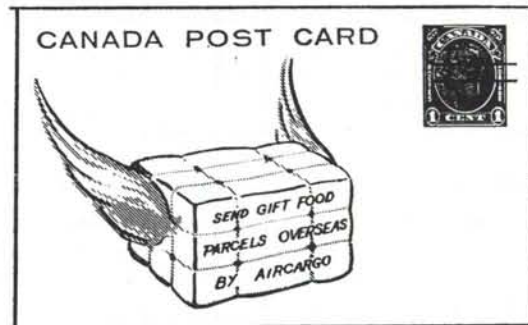
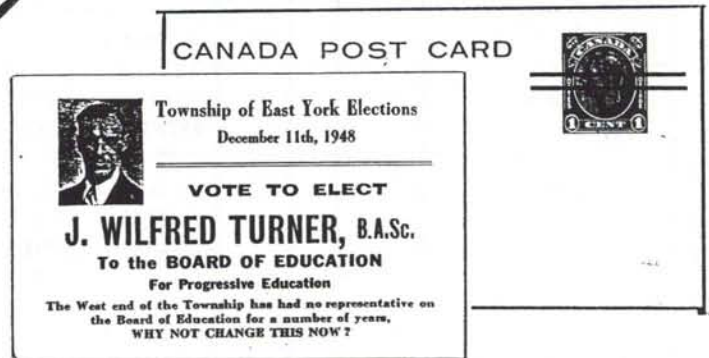
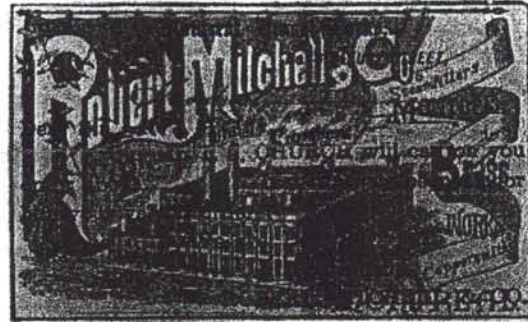
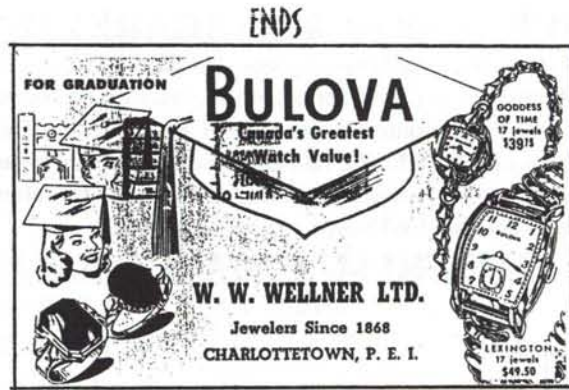
Here is **Webb P66u (on P66d) 1¢ green George VI Type 5**, a precancelled card used in the Township of East York in 1948, towards the end of the usage of private precancels. It asks for your vote for J. Wilson Turner to the Board of Education. Precancelled 2 medium bars 38 x 4½ mm

#39.

Another private precancel, **Webb P66r (on P66e mimeo) 1¢ green George VI Type 5**, used by Trans-Canada Air Lines. A card was delivered to all households. Year of use not certain, but probably just after World War II. Trans-Canada Air Lines was established in 1937 and became Air Canada in 1965. Precancelled two medium bars, 21 x 4½ mm.

#40.

Webb P38 1¢ orange Scroll Issue blank card used in Toronto, year unknown. This is one of two Bachelor Cigar advertising cards in the author's collection. An amusing memento of a time when smoking was a pleasure, not a vice.



Coming: Cigarette card update.
Contact author at e-mail: jandmgrace@sympatico.ca

ODDS 'N' ENDS BY JOHN GRACE #41. CIGARETTE ORDER CARDS

Articles about these cards have appeared in PSN V4, pages 28 and 35, V14, pages 23 and 32 and V17 pages 58-60. All cards are on P66 (38/O) unless noted otherwise. Lines and rules on the back are counted but lines before or after a bracket ({ or }) are counted as one. **CHOICES** = number of articles available for order. Cards are privately rouletted top and/or bottom. **ROULETTE** refers to the distance of an internal horizontal roulette from the bottom. Concern has been voiced that this last measurement may be of little value. Variations must be expected. We reproduce the table from Odds 'n' Ends #22 with the additions, which are marked *

IMPERIAL TOBACCO SALES COMPANY OF CANADA

"SWEET CAPS" - P.O. BOX 6000 - MONTREAL, QUEBEC

FRONT	STAT.	LINES	CHOICES	ROULETTE	REMARKS
blank	none	23	4	19	Serifs. Used: September 18, 1940. Illustration: F1/B1
blank	none	23	4	17*	Serifs. Used: November 20, 1940. Illustration: F1/B1 . *Roulette
blank	none	26	4	17	Sans-serifs. Used: February 19, 1941. F1/B2
blank	604-82515	?	?	?	PSN V.15, p. 32, reported by Pierre Gauthier. No illustration available.
blank	604-83023 top left	28	4	15	Sans-serif, as are all following. Used: 1941. AMOUNT OF REMITTANCE on back in one line. F1/B3
blank	604-86242 top right	28	6	15	Used: June 25, 1942. AMOUNT OF REMITTANCE in two lines, as are all following. F1/B4
girl	604-88182	24	7	15	IMPORTANT front lower left. Used: April 19, 1943. F2/B5
girl	604-88917	24	7	15	As last. Used: February 16, 1943. F2/B5 with different STAT. IMPERIAL TOBACCO etc. <i>above</i> DETACH AND KEEP etc.
girl	604-85329	24	7	15	As last. Used: October 2, 1942. F2/B5A* with different STAT. *, IMPORTANT not underlined, and * IMPERIAL TOBACCO etc. <i>under</i> DETACH AND KEEP etc
girl	604-91017	24	7	17	As last. Used: August 17, 1943. IMPORTANT on back. F3/B6
girl	604-91405	24	7	15	As last. Used: October 22, 1943. F3/B6 with different STAT.
girl	604-91962	24	7	15	As last. Used: December 24, 1943. F3/B6 with different STAT*
girl	604-93699	24	7	15	As last. Used: March 13, 1944. F3/B6 with different STAT.
girl	604-94830	24	7	15	As last. Used: May 2, 1944. F3/B6 with different STAT.
girl	604-95490	24	7	15	As last but line 9 1000 OR MORE CIGARETTES OF EACH ... is blacked out by two heavy lines. Used: September 14, 1944. F3/B7
girl	604-96119	24	7	15	New front and back. Used: October 25, 1944. F4/B8
girl	604-96727	24	7	15	Used: December 27, 1944. F4/B8 with different STAT.
girl	604-99025	24	7	18*	Used: January 29, 1945. F4/B8 with different STAT. * and *roulette



IMPORTANT

KEEP THIS PORTION AND COMPANY PARCEL NUMBER WITH ALL ENCLOSED RECEIPT CARDS FROM RECEIPT FROM OFFICE. SEND QUOTE PARCEL NUMBER WHEN WRITING TO US.



PARCEL NUMBER: 14-28



THANK YOU FOR YOUR ORDER WHICH HAS HAD PROMPT ATTENTION. IF NECESSARY TO WRITE TO US, PLEASE QUOTE PARCEL NUMBER SHOWN ON REVERSE SIDE. **DETACH AND KEEP THIS RECEIPT PORTION** — USE FORM BELOW FOR YOUR NEXT ORDER.

IMPERIAL TOBACCO SALES COMPANY OF CANADA, LIMITED

ORDERS LISTED BELOW CAN BE SENT TO MEMBERS OF ALL CIGARETTE ARMED FORCES OVERSEAS AND CANADIAN IN ARMED SERVICES PARCEL, BY RATE OF \$1.00 PER EACH 1000 CIGARETTES AND SHOWN ON 1 LB. TOBACCO OR 1 KIL. CIGARETTES. THESE PACKS INCLUDE WITH SWEET CAPS 1000 OR MORE CIGARETTES OF EACH BRAND CAN BE SENT FOR \$1.35 PER 1000 IF TO ONE ADDRESS. YOUR TOBACCO DEALER WILL ACCEPT ORDERS AT A NOMINAL CHARGE OF 10% FOR HIS SERVICE. ON YOU MAY MAIL RECEIPTANCE TO:

"SWEET CAPS" - P.O. BOX 6000 - MONTREAL, QUEBEC

IMPORTANT - PRINT NAMES AND ADDRESSES CLEARLY.

SWEET CAPS _____

LONGMEAD COPY _____ SWEET CAPS CIGARETTE TOBACCO _____

OLD TOBACCO PIPE TOBACCO _____ CLEAR CIGARETTE TOBACCO _____ SWEET CAPS _____

TO: REG. NUMBER _____

RANK AND NAME _____

FULL DETAILS OF UNIT _____

SENDER'S NAME AND ADDRESS ARE ON THE REVERSE SIDE. THIS OFFER SUBJECT TO CHANGE OR CANCELLATION WITHOUT NOTICE. NEW REPLY MUST CLEARLY STATE THESE PACKS ARE DELIVERED BY POST AUTHORITY ON OTHER COUNTRIES. IF FULLY ADDRESSED TO MEMBER OF CANADIAN ARMED FORCES OVERSEAS CANNOT BE DELIVERED BY POST ORDER IS ADVISED FULLY WILL BE RETURNED TO CANADIAN POSTAL OFFICE. SEE TO USE CONDITIONS "GROUP MEMBERSHIP SET." THE POST OFFICE DEPARTMENT SUGGESTS THAT ORDER NUMBER BE ALLOWED FOR OVERSEAS ACKNOWLEDGMENTS.

NEWS BULLETIN

We have just learned that four tulip post cards will be issued May 22. Like previous cards, they will be non-denominated with postage prepaid to anywhere in the world. (Courtesy Andrew Chung)

