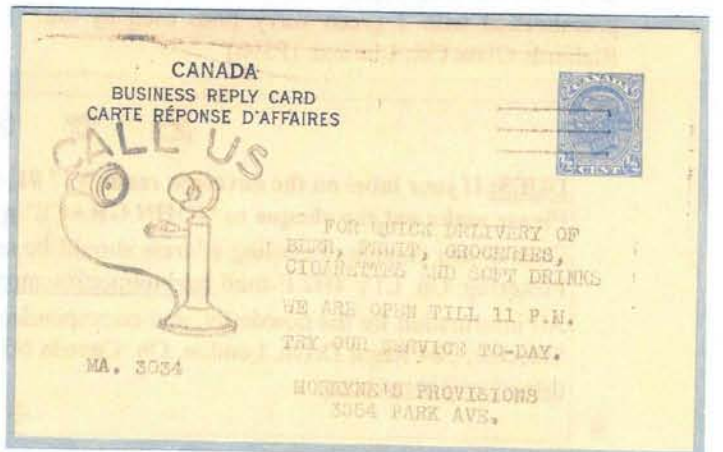
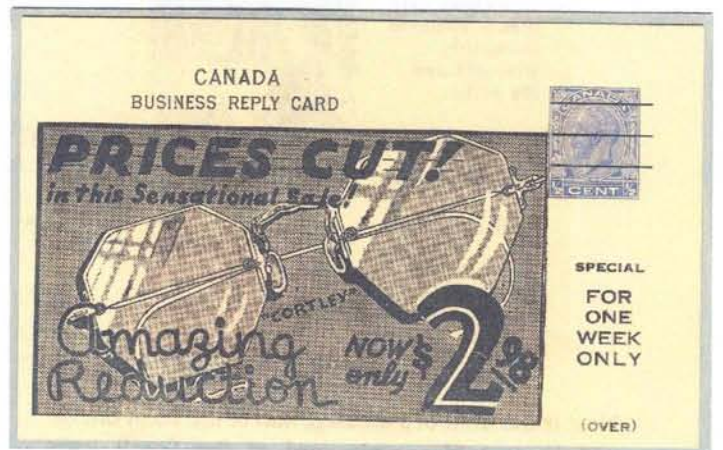
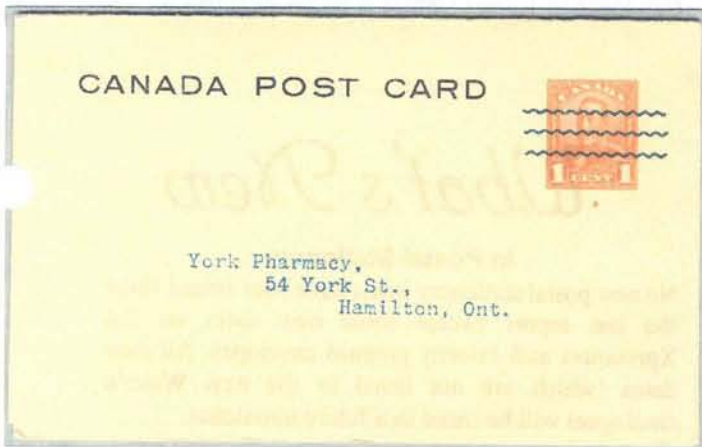
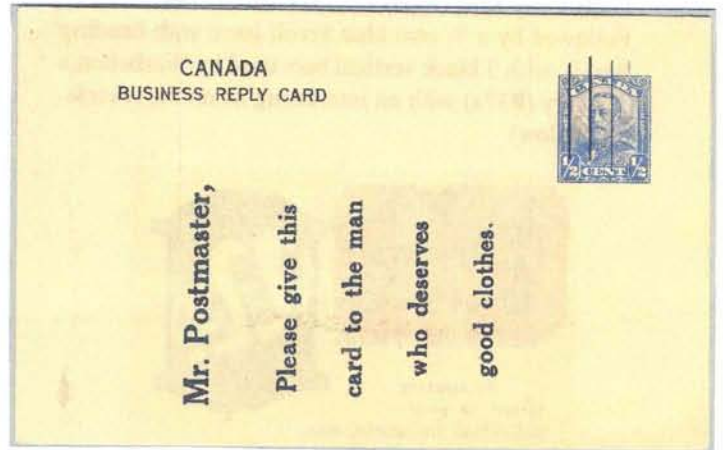
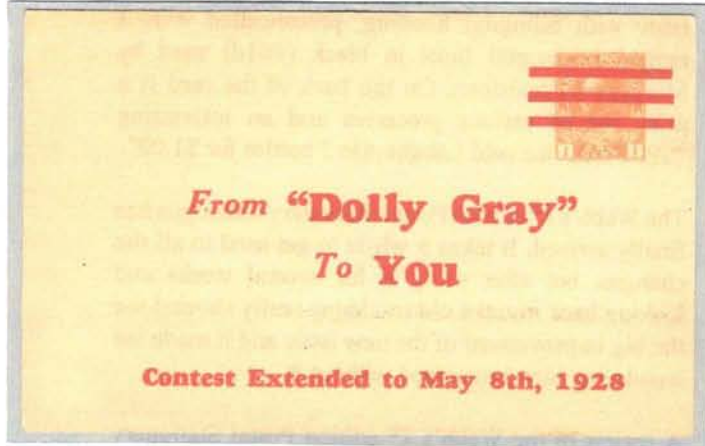


Postal Stationery Notes

Volume 16 No. 6

May 2001



Editor's Notes

On the preceding page I am showing a selection of privately precancelled cards. They are quite colourful and rare. Although I am only showing the front, most cards also have very interesting backs. Therefore it is no surprise, that these items are in such high demand. The first card shown is a 1 cent orange Admiral issue without heading, with 3 horizontal bars in red used by Dolly Gray Knit Goods Co., Toronto. (P29s) Followed by a ½ cent blue Scroll issue with heading type 9, with 3 black vertical bars used by Warbutton's Toggery (P37a) with an interesting ad on the reverse. (see below)

Real Tailored To-Order SUITS
Rich Woolen Fabrics

Accurately fitted to your individual measurements.

These garments compare favourably with \$40 and \$50 suits.

You must be satisfied or money refunded.

Call in to-day.

Warbutton's Toggery
327 King St. E.
Hamilton, Canada.

EXTRA PANTS FREE!

Next is the front of a message half of the 1 cent orange and ½ cent blue reply card of the Scroll issue precancelled with 3 green wavy lines used by the Richards Glass Co., Limited. (P39b)

Beside that card is the ½ cent blue Medallion issue heading type 9 precancelled card with 3 thin horizontal lines used by Ritholz Optical Co., London, Ontario. (P51b)

On the bottom left is the message half of the 1 cent and ½ cent reply card of the Medallion issue with 3 ragged bars in red used by the Richards Glass Co., Limited. (P53b)

The last card is the half cent blue of the CBN Profile issue with bilingual heading, precancelled with 3 ragged horizontal lines in black (P61d) used by Moreyne's Provisions. On the back of the card is a price list of various groceries and an interesting "SPECIAL- ice cold Labatts Ale 7 bottles for \$1.00".

The Webb's 7th edition Postal Stationery Catalogue has finally arrived. It takes a while to get used to all the changes, but after using it for several weeks and looking back into the old catalogue really showed me the big improvement of the new issue and it made me wondering how I managed without it.

A review of the Webb's 7th edition Postal Stationery Catalogue by Robert Lemire is on the next pages.

What's New

in Postal Stationery

No new postal stationery items have been issued since the last report except some new dates on the Xpresspost and Priority prepaid envelopes. All new dates (which are not listed in the new Webb's catalogue) will be listed in a future newsletter.

New PCF cards are expected to be issued this Summer.



DUES: If your label on the envelope reads V17 #1, your fee of Can. \$8.00 or U.S. equivalent is now due. Please make out the cheque to 'JOHN GRACE' not to BNAPS or the Postal Stationery Study Group. Dues or any change of mailing address should be sent to the Sec./ Treasurer John Grace, 734 Aspen Rd. Pickering, On. L1V 4H2 E-mail jandmgrace@sympatico.ca

All information for the newsletter, and correspondence about the study group, should be addressed to Dick Staecker, 384 Regal Drive, London, On. Canada N5Y 1J7, phone (519) 455-9715, E-mail may be sent to dstaecker@home.com



Webb's 7th Edition: A Very Different Catalogue

by Robert Lemire

Earle L. Covert & William C. Walton, editors, "Webb's Postal Stationery Catalogue Of Canada and Newfoundland", 7th edition, Saskatoon Stamp Centre (2001), CAN\$39.95, US\$26.95 (available from the publisher, P.O. Box 1870, Saskatoon, SK, S7K 3S2: with postage and handling charges of CAN\$5.00 to Canada, US\$5.25 to the U.S., or CAN\$11.50 to overseas addresses).

The 7th edition of the Webb's Postal Stationery Catalogue is now available, supplanting the 1993 (6th) edition. Collectors who have used the previous editions will get their first surprise before they open the front cover. The idea of balancing this Catalogue with one hand, and going through a pile of covers at a bourse using the other, must be abandoned. The Catalogue now has been expanded from less than two hundred pages to well over three hundred 8½" x 11" pages, and it weighs almost a kilogram (the previous edition weighed just over 300 g).

So what does the reader gain to compensate for this change in size? First of all, pictures, pictures and more pictures. There are pictures of the Admiral Issue dies. Large pictures. Clear pictures. There are pictures of most of the private order and official cards. There are pictures of the aerogramme flap and setting variations. There are pictures of the address labels. There are pictures of the railway and steamship pictorial cards—all the views. There are many more pictures in the essays and proofs sections. Then there are the envelopes—not just pictures of the dies, but an entire section showing superb, full scale pictures of the regular issue envelope knives and envelope linings.

Second, there is an attempt to put some order to the rather chaotic array of prepaid stationery (some with stamp impressions, some not) that have been issued or authorized by Canada Post over the last decade. Sky Pak, the CD and Photo Mailers, the Postcard Factory cards, the Xpresspost envelopes, the Red Cross special issue post cards, the envelopes from the "U.S. Priority Mail" experiment and many other items are included along with the various new regular issue envelopes.

Third, there are expanded listings for several of the more popular series of post cards—the Hospital for Sick Children cards, the Eaton's cards, the Christmas Seal cards and the Money Order pictorial cards (and there is a new section on the related early Canadian Express ad cards).

Fourth, there are other new sections: a listing of the Hechler envelopes, a listing and detailed pictures of the Edwardian envelope dies (a revision of the list dropped after the 4th edition of the Catalogue), and a listing of the "request for additional labels".

The new sections will keep collectors scrambling to find items to add to the 8th edition. The pictures will allow us to discover whether the rare items in our collections are ones the editors have seen, or whether they are "unreported".

There has also been some major reorganization within Webb's. The post cards now directly follow the envelopes and are followed by the wrappers, letter cards and air letter sheets. After more than a decade of trying to find the "Official" items near the back of the Catalogue, the reader now must learn to find them at the end of the appropriate section. This should be simpler; but, I did say at the *end* of the appropriate section, not directly following the "Private Order" items. Thus, the "Official Envelopes" now do follow the section on "Private Order Envelopes". However, in the Post Card section, the "Official" items not only follow the "Private Order Post Cards", they strangely follow the "Railway & Steamship Pictorial Cards" and even the "Niagara Falls Scenic Views". Some items, such as the letter sheets and address labels have

ended up in a section on "Miscellaneous Stationery". The Priority Post and Xpresspost items have been relegated to "back of the book" status, and now come after the Newfoundland section. At least some of these changes are distinct improvements, as I discovered after using the new edition for a couple of weeks.

What else is new? There are separate prices for used reply card halves and 3-on strips of mimeo rouletted cards; the "Specimen" private order envelopes and election envelopes are identified and priced. There is a millimetre scale buried on page 315 in one of the Appendices (thanks to Bill Geijsbeek for pointing it out to me). However, that scale would be even more useful if it ran to the edge of the page (as is done in the Geuzendam catalogue of Dutch postal stationery) to facilitate measurements of stamp impression sizes and heading lengths.

There has been a thorough repricing in many sections. I may not agree with the final results in a very few cases, but it is obvious great attention has been paid to dealers and recent auction realizations. Among the major changes are upward revisions to the prices for selected Elizabethan material. The election envelopes have been completely repriced. The prices for many private order post cards have increased substantially. The prices on most Newfoundland items are up, but the Catalogue prices may still be trailing the market for the scarcer items in that section.

Of course, there are still apparent inconsistencies in treatment of different areas. The hardest problem (and there is no good solution) remains with the official items. The listing of a single Department of National Health and Welfare card as DP74d, apparently because of an added heading, will only lead to more debate. (There are unlisted cards in that series, including some with an added heading). Moving the National Film Board 4¢ + 4¢ reply card to the official section may also be open to debate. There are details on setting varieties on the letter cards, and even for the Hechler envelopes, but setting varieties on the wrappers are still relegated to footnotes. There are more setting varieties listed in the section on the Xpresspost envelopes—a true is specialist listing, and though the Xpresspost roulettes are shown, the different roulettes on the regular issue mimeo rouletted cards are not discussed. The pictorial Manitoba Hydro permit is given full catalogue status, but the prepaid Quebec Government envelopes (with the same type of indicia as the Red Cross post cards) are not even mentioned. I collect the "Request for Additional Delivery" stickers, but it could be argued that there are many other items of post office postal stationery more worthy of inclusion in Webb's (for example, the formular air letter sheets described by Pierre Gauthier in BNA Topics, Vol. 55, No. 3 7-20 (1998)).

Considering the complexity of the task of preparing the Catalogue, there seem to be relatively few typographical errors. I checked many of the large number of page cross-references, and all seemed correct—a difficult job well done. There are some strange, apparently extraneous, boldings of text in the Private Order Envelopes section. Layout is sometimes crowded; in several places headings are jammed between sections, with minimal white space above the headings. In various places bolding and underlining seem to have been used in preference to spacing out notes on a page. I suppose this helped keep the number of pages from becoming larger, but it left me with the feeling the editors are shouting at the reader in places. Bold boxes are used to separate other notes from the rest of the text. The boxes seem intended to draw the attention of the reader to the notes. Instead, there is a tendency to read past them. However, overall these problems are minor.

So what we have is a larger, but much more useable catalogue. Better than ever. Doubters should simply pick up and compare this new volume with copies of earlier editions, for example, the 1st, 4th and 5th. Great effort that has gone into this fine new 7th edition (and its predecessors). For this collector, the only words that even approach being appropriate are "Thank you".

Chris Ryan sent in photo copies (reduced size) of two GO items not listed in the latest Webb's catalogue. They are similar to earlier issues, but have the heading "PAID/PAYÉ" instead of "GUARANTEED SERVICE" as on the older issues. The new catalogue only lists a GO letter in the new format.

1. Trillium GO Pack "PAID/PAYÉ" only. *Hidden numbers: 522521 06/97 - DK#SP501422-07/98 - 501615-10/98 - 501687-03/99*
2. Small size GO letter with a window "PAID/PAYÉ" only (285 x 223 mm). *Hidden number: 523859-06/97*



GOVERNMENT OF ONTARIO / GOUVERNEMENT DE L'ONTARIO



Ministry
of Education
and Training

Distribution Services
210 Wicksteed Ave.
Toronto, Ontario
M4G 2C3

Ministère
de l'Éducation
et de la Formation

Services, Distribution
210 Av Wicksteed
Toronto (Ontario)
M4G 2C3



GOVERNMENT OF ONTARIO / GOUVERNEMENT DE L'ONTARIO



L'INTÉRIEUR DE L'ONTARIO



**Mohawk
College**

Fennel Avenue and West 5th
P.O. Box 2034
Hamilton ON L8N 3T2

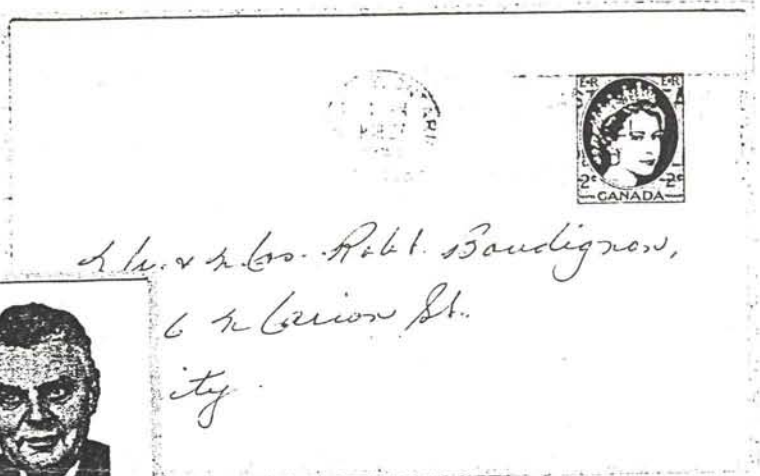


FOR USE BETWEEN POINTS WITHIN ONTARIO
POUR UTILISATION ENTRE DEUX POINTS À L'INTÉRIEUR DE L'ONTARIO

Postal Stationery election cards

I find it very interesting collecting postal cards used for Municipal, Provincial and Federal elections showing the candidate on the front or back. Researching what happened to the candidates is quite fascinating.

Below are two samples,





YOU VOTE AT
 POLLING DIVISION No. 16
 Alexander Public School, St. Brandon St.

For Information on Election Day
 PHONE
 OS 4-6481 4-6483 4-6485
 POLLS OPEN 8.00 am. to 6.00 p.m.



MITCHELL, R. M.
DOCTOR

THE RIGHT HON.
JOHN DIEFENBAKER
PRIME MINISTER
OF CANADA


Vote Conservative On March 31st.

ELECT **MITCHELL, R. M.** X
DOCTOR



SUB-DIVISION No. 31

Municipal Election Monday, December 3rd, 1928.
 Your Vote and Influence Respectfully Asked For



W. J. Kilpatrick
 As MAYOR for 1929

You Vote at Victoria Public School

POLLS OPEN 9 A.M. UNTIL 7 P. M.
 HEADQUARTERS, MOLSONS BANK BUILDING, 133 DUNDAS ST.
 Call Metcalf 8085 for a car to take you to vote.
 Ealing Committee Room 583 Hamilton Road. Phone Fair. 3195.

Wanted to buy or trade
 Canadian Postal cards showing the candidate for Municipal, Provincial or Federal elections on the front or back.
 Dick Staecker, 384 Regal Drive, London, On.
 N5Y 1J7

Dom. El. Act—Form 95—1-31-100M

Return after five days to

CHIEF ELECTORAL OFFICER
OTTAWA

The embossed postage stamp on this envelope is sufficient. No ordinary adhesive postage stamps need be affixed. This envelope is to be used only to transmit the certificate of the poll to candidates at the pending election



SPECIMEN
SPECIMEN

To.....

(OCCUPATION, AS STATED ON BALLOT)

Electoral District of
Certificate of Poll from Polling Station
for Polling Division No.
Despatched by

candidate at the pending election for a member to serve in the
House of Commons of Canada

(P.O. ADDRESS, AS STATED ON BALLOT)

Province of.....

D. R. O.

SPECIMEN OVERPRINTS

Peter Zariwny sent in a photo copy of this election envelope (EN803) with SPECIMEN overprints not listed in the new Webb's catalogue.

He also reported other election envelopes with SPECIMEN overprints unlisted in the catalogue: EN802c, EN805, EN805b, EN805c, EN805d, EN808f and 808k.

PSSG MEMBERSHIP UPDATE

| | |
|----------------------------|----|
| Paid members | 82 |
| Renewals to May 1, 2001 | 0 |
| New members to May 1, 2001 | 1 |
| Deceased | 1 |
| New paid member total: | 82 |
| Circulation of PSN | 92 |

ADD TO MEMBERSHIP LIST

Gary Clarke, Box 53, Petersburg, ON N0B 2H0

CHANGE OF ADDRESS

Robert G. Stanley, 327 Marlton Cr.,
Winnipeg, MB R3R 1A6
Scott Traquair, P.O. Box 25
Georgetown, ON L7G 4T1

DECEASED

C. Angus Parker

MEMBERSHIP LAPSED

Anderson, Angst, Beecham, Beltrandi,
Burega, Curtis, Daneman, Eisenberg,
Flynn, Gerlach, Kasper, Kravitz,
Narbonne, Pignon, Rapp, Russell
Steinkamp, Underhill, White,
Vanderburgh

POSTAL STATIONERY NOTES - INDEX VOLUMES 13 TO 16

(Volume + page #, e.g. 14-47/48/49 means volume 14, pages 47, 48, and 49)

AEROGRAMS

- A13b reported used 13-9; A24a reported unused 13-9
- Air Letter Sheet Forerunners and Unstamped Forms [Gauthier] 14-37/38/39/40; 14-47/48/49
- cardboard markers 13-16
- new 90¢ parachute 13-9; new 90¢ harlequin ducks 14-2; variety on 14-13; paper variety 1961 13-42; watermarks 13-26
- AUTOMOTIVE OPINION FORUM see *ENVELOPES* special order
- BNAPEX 1995 13-1; 1995 report 13-17; 1996 13-55; 1997 14-22; 1999 15-20; 15-27; 2000 report 16-11
- BULOVA CARDS see *POST CARDS*
- CANADIAN EXPRESS COMPANY card listing see *POST CARDS*
- CANADIAN FORCES AIR LETTERS see *AEROGRAMS*
- CD MAILER 14-57
- CERTIFIED MAIL 13-7
- CHANGE OF ADDRESS CARDS [Lemire] 16-44/45/46/47/48/49
- CHRISTMAS SEAL CARDS see *POST CARDS*
- CIGARETTE CARDS see *POST CARDS*
- CPR CARDS ROULETTED a review of Art Klass's listing 15-7
- EARLIEST REPORTED POSTMARKS (ERP) updates 13-11; 13-38

EDITOR

- ROBERT LEMIRE retires 13-1; STEVEN WHITCOMBE new editor 13-1; DICK STAECKER new editor 15-3
- ELECTRONIC MAIL 15-13

ENVELOPES

- EN72b, used copies 13-46
- EN506 special order mystery 13-44
- 1¢ green George V Dominion Envelope oval die Variety 13-12
- Edward VII registered envelopes [Hoorens] 16-21
- Election envelope SPECIMEN 16-57
- Envelopes to Belgium and card to Japan [Hoorens] 16-34
- Errors [Aitken] 13-16; 13-34
- Government of Quebec prepaid 13-6/7, 13-27; 15-7
- New discovery 1969 4¢ revalued to 6¢ 2nd Karsh by Gasparo 14-9
- Newfoundland rates 1940, request for information [Harrison] 13-46
- New 43¢ envelopes, Yellowknife & Winnipeg 13-9; New 45¢ envelopes, Edmonton & Québec 13-9
- New 45¢ envelopes, Woodpecker & Puffin 13-27; New 45¢ envelopes, Hummingbird American Kestrel 14-2
- New 45¢ envelopes, Western Grackle & Western Bluebird 14-11; New 45¢ envelopes, Rosy Finch & Screech Owl 14-54
- New 46¢ envelopes, Hairy Woodpecker & Flycatcher 15-17; #10 printings 15-17; #8 printings 15-27
- New 46¢ envelopes, Canada Warbler Blue Jay 15-47;
- New 47¢ envelopes, Lapland Longspur & Golden Eagle 16-32/33; different bar codes 16-42
- New Scenic Highways window envelopes 14-21
- Official envelope DEN522-45 two stamp impressions [Harrison] 14-29
- Printing statistics [Aitken] 13-50
- Private printing on regular envelopes [Knieram] 16-14
- Reader's Digest 13-5/6, update list 13-19
- Special Event Envelopes 13-47
- Special letter envelope New Brunswick 14-20
- Special order Automotive Opinion Forum 13-17, 13-25
- Special order Columbia House [Aitken] 13-39/40; replaced by permit 13-46
- Special order discovery Dept. of Agriculture like DEN543? but... 14-44
- Special order discovery HENDERSON BUSINESS SERVICE, like 525-70/70a but... 14-44
- Special order discovery 6¢ orange Centennial similar EN557-10b but... 14-44
- Special order discovery 2¢ green Wilding with inspection notice 15-9/11
- Special order envelope cut-down and modified 16-41
- Special order IMAX envelope 15-37/38
- Special order Manitoba Hydro 13-25
- Special order, new discoveries in, 13-15
- Special order Orangeville envelopes 14-45
- Special order Palmolive envelopes, English, illustrations 16-36
- Special order Pennysaver with coloured printing on tab 13-26; 13-42
- Special order Year of the Dragon envelopes 15-47; reprint 16-11; how to distinguish 16-32
- Special order Year of the Snake envelope 16-42

- Special order Year of the Tiger envelopes 14-43;14-54/55
 An Unusual Water Resources card with Postage Paid handstamp 13-56
 Updates Webb unused copies found EN97h, EN534-7, EN536 13-9
 used copies found EN128c, EN129b, EN504-10f, EN563-27 13-9
 unused copy of EN97h 14-22
- ESSAYS** Newfoundland 1879 post card [Harrison] 14-14/15; Canada 15-2
- GO LETTERS** background information 14-60
 Carleton University 15-28/30
 discontinued 15-11
 for vanity plates 14-28
 hidden numbers 15-19
 label as XPRESSPOST 15-19
 new Webb numbers 14-56/59
 two new items [Ryan] 16-55
 update 13-14; 14-41/42; 14-50/51/52
- GO PACKS** background information 14-60; update 13-2
- INDEX V 13 to V 16** 16-58/59/60
- MEMBERSHIP LIST** 13-45; 16-40
- MEMBERSHIP UPDATES** 16-50, 16-57
- METEOROLOGICAL RETURN LABELS** 13-40/41; 14-44
- MILLENIUM KEEPSAKE** 15-28
- NEWS**
 Allan Steinhart obituary 14-2
 Berlin Exhibition 15-48/49
 Jim Webb obituary 13-18
 Mark Arons obituary 14-54
 Review of rate book 16-15
 Rich Toop obituary 13-47
 Webb Catalogue 7th Edition review [Lemire] 16-53/54
- OFFICIALS** see *ENVELOPES* etc.
- ON-LINE AUCTIONS** [Sagar] 16-16/17
- ONTARIO HYDRO CARDS** see *POST CARDS*
- PHOTO MAILER** 14-58; 15-19
- POSTAL STATIONERY POT-POURRI** (Horace Harrison) Newfoundland 14-46; essays 15-2; 15-10
- POSTBANDS & WRAPPERS** W3b miscut with stitch watermark 13-15
 W13 with advertising [Sagar] 14-60; 15-24/25/26
 CBNC Wrapper and Post Band Orders [Lemire] 16-4/5
 researching paper types 13-16
- POST CARD FACTORY (PCF)** see *POST CARDS*
- POST CARDS**
 KP30e colour illustration 15-10
 P9 and others, printing varieties 13-28
 P12 printing oddity 13-13
 P23 Edwardian pictorial card, The Carleton House 13-14
 P38b Why a Pair? 14-59
 P72 surcharge bars 21.2 mm 13-4, update 13-26
 P86 4¢ on 3¢ surcharge orders 13-4
 P92 missing accent on REPOSE 13-16
 Admiral UPU card, A Shocking Discovery [Whitcombe] 13-48/49
 Briggs Methodist Book and Publishing 13-16; updates *BNA Topics* V54 #1 [Ellis] 16-24
 Bulova cards [Grace] 13-8; 14-3/4/5/6 & 10; 14-17/18/19; 14-24/25; 14-34/35; 15-6; 16-49/50
 Canada Atlantic Railway illustrated card 15-52
 Canadian Express Company listing [Grace] 15-41/42/43/44/45/46; 15-53/54/55/56; 16-8/9/10; 16-18/19; 16-27/28/29; 16-37/38/39;
 Canadian Express Company Money Order card, see New discovery below
 Canadian National Express card in French 15-52
 Canadian Northern Manuscript Ad cards 14-7/8/8
 Canadian Pacific Railway Company 15-34/35/36
 Christmas Seal cards, new, 13-37 & 13-44; 13-55; 14-30; 15-8; 16-30
 Cigarette cards 14-23; 14-32
 CNR black views typesetting variety on CNR3 [Walton] 14-15/16; new title discoveries 15-50/51
 Confederation statistics English card, typesetting variety 13-8
 Early CBNC Elizabethan post card orders [Lemire] 15-38/39/40; 16-4
 Eaton cards, project 13-37

Eight cent blue George VI 13-44
 Election cards 16-56
 Francophonie post card 15-23
 Message parts of reply cards used as singles [Gauthier] 15-4/5; P59a [Lemire] 16-6
 Michigan Central R.R. card 16-20
 Millenium post card 15-28
 National Film Board cards [Lemire] 13-10; 16-6
 New discovery BABNC revalue on P97 14-53
 New discovery: Canadian Express M.O. card [Ellis] 16-43
 New bird picture post cards 15-1/3; 15-9
 New private precancel P51c 13-28; correction 14-2
 New private precancel on P51c 14-28
 New private precance P66d 1 13-13
 New private precancel P66i 13-8
 Ontario Hydro cards 15-12; 16-2/3/4
 Pan-American games cards 15-18
 Plate numbers on P1/2 [Whitcombe] 13-21/22/23/24; 13-29/30/31/32/33; 13-42/43; 13-51/52/53/54
 Postal Museum card with inverted cancel 16-35
 Post Card Factory (PCF) post cards 14-11/12; 14-23; 14-33; 14-44; 14-60;
 list 15-15/1615-17/18; correction 15-28; 15-37; sticker 16-1/2; 16-12
 list [Staecker] 16-13; update 16-23; 16-42
 Private heading like Type 4C added to Type 6 card 15-36
 Privately rouletted CPR cards, a review 15-7
 Private precancels illustrated 16-51/52
 Railway View Cards, new, Canadian Northern 13-41; 13-47, 13-51
 War tax on CPR view cards? 14-60
 Who has these Railway View Cards? [Walton] 14-33; one gap filled 15-13
 See also CNR black views above
 Railway Express Agency US card 16-35
 Regulations for the address side, 1871 15-20/21/22
 Reply card photocopies 16-25/26
 Short bar on T of POST 13-9
 Special order Year of the Tiger post cards 14-55
 Special order, Lobster card 14-44
 Tall ships post cards 16-12
 UPU George V cards, illustrations 16-31
 Vancouver & other BC library cut down cards [Sagar] 13-35; 15-32/33/34
PROOFS Edward VII [Harrison] 13-2/3
 First Karsh 4 and 5¢ envelopes 14-22; [Machum] 15-30/31
PRECANCELS new private on P51c 13-28; correction 14-2
 another on P51c 14-28
 new private on P66d 13-13
 new private on P 66i 13-8
 private, illustrations 16-51/52
PRIORITY MAIL USPS Priority Mail in Canada 14-36
READER'S DIGEST see *ENVELOPES*
SELF-MAILER Valentine's Day 15-37
SKY PACK 15-8; 16-2
SPECIAL LETTER ENVELOPES see *ENVELOPES*
SPECIAL ORDER see *ENVELOPES* etc.
SPECIMEN OVERPRINTS 14-9/10
WATERMARKS on Edwardian proofs 13-3
WEBB CATALOGUE REVIEW, 7th EDITION [Lemire] 16-53/54
XPRESSPOST
 Air Canada 14-16; 14-42
 boxes and bubble packs 14-12
 Brand-It program 15-29; 15-38; 16-22/23
 coding change 15-48
 envelopes to USA 16-2/7
 festive packaging 16-24; 16-32
 Government of Ontario (Schulich) 16-42/43
 listing 14-26/27
 new dating (clock-face) 15-18; 15-28
 pre-paid labels 14-13; correction 14-60; 15-19/20
 private order Hong Kong Bank 16-12/20
 varieties 13-12; 13-35