

Postal Stationery Notes

Volume 26 No. 3

This supplements our newsletter, PS Notes

Jul 2014

New Issues July 2014

Postal Stationery Study Group of BNAPS

New issues online, presented here as a pdf. Once opened in your browser, you can save it to your own computer, and search it as you would any pdf. This first page is interactive: click on an issue and it will take you there. You can then return easily to this page by clicking the return button at the upper right corner of each page.

The first issue of 2014 was two post cards for the Year of the Horse, listed in our last online New Issues. There was a longer than usual pause before other issues were available, probably due to the March increase in postal rates, and CPC not wanting to issue items that would be sold at old rates and used at new rates (as most of these issues are mail anywhere cards).

We have provided Canada Post order numbers for those wishing to purchase online. This will enable shoppers to go to Canada Post and shop by item number. To shop online, Go to: <http://www.canadapost.ca/shop/shop.jsf?execution=e1s1>

Issues since last issue to date: These are derived from a search of the CPC web site, and a careful reading of Details, for mentions of new issues. This usually results in a few items not easily found without knowing what you are looking for on the CPC web site. If we have missed anything, please let us know. (Sets of cards can sometimes be purchased singly; we have provided only the product number for the set, which in some cases can only be purchased by mail or online from Antigonish).

<u>Item</u>	<u>Product number</u>
Baby Animals – new additions - set of 5: (Mar 31 2014)	262387
UNESCO World Heritage sites, Part 1 – set of 5 cards: (Mar 31 2014)	262381
Royal Ontario Museum –3 cards (April 14, 2014)	262388, 262388, & 262390
Roses: Red & Yellow (April 23, 1914)	262391 & 262392
UNESCO World Heritage sites, Part 2 – set of 5 cards: (May 16 2014)	262399
Empress of Ireland – 2 cards: (May 29 2014)	262400 & 262401
Haunted Canada – set of 5: (Jun 13 2014)	262365
Canadian Photography – new additions – Set of 7 cards: (Jul 7, 2014)	262393

* Details: View and download the latest issues:

- [June-July 2014, Volume XXIII NO 5](#)
- [May 2014, Volume XXIII NO 4](#)
- [April 2014, Volume XXIII NO 3](#)
- [March 2014, Volume XXIII NO 2](#)

or for all issues currently online:

<http://www.canadapost.ca/cpo/mc/personal/productsservices/collect/publications.jsf>

PSNotes New Issues Supplement July 2014

2014 New Issues from Canada Post

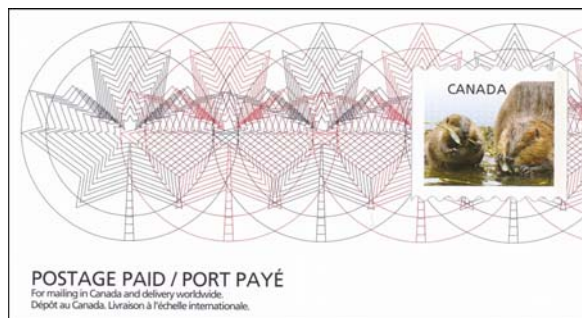
July 2014

March 31, 2014: Additions to the **Baby Animals** series. This series was begun in January of 2011, and four cards have been issued each January since then (2011, 2012, and 2013). This year there are five cards, sold at \$2.50 each, or \$12.50 for the set (online or by mail). These are “from Canada to anywhere” prepaid cards. This year features the following, similar to the five stamps issued at the same time:

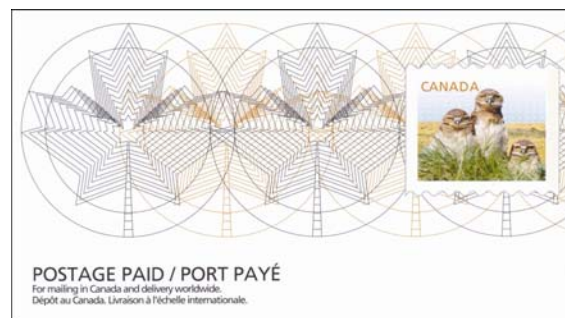
- baby beaver (#262382)
- burrowing owl (#262383)
- mountain goat (#262384)
- puffin (#262385), and
- wapiti (#262386).

The set number is 262387 for all 5 cards.

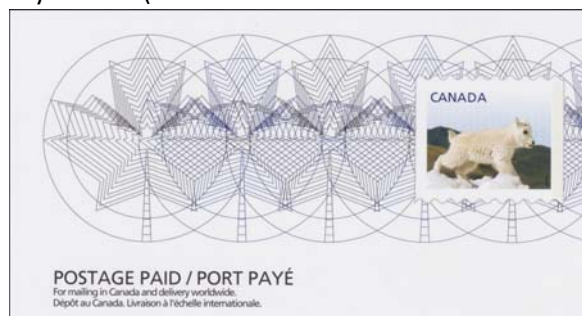
The stamp dies are shown below, which replicate the stamps issued simultaneously..



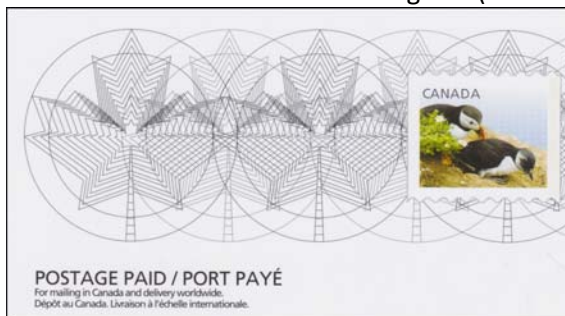
baby beaver (#262382)



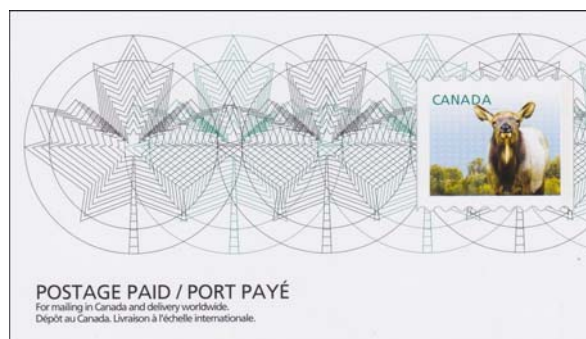
burrowing owl (#262383)



mountain goat (#262384)



puffin (#262385)



wapiti (#262386)



View side of the Baby animal cards

March 31, 2014: Also issued on March 31 was the **Canada** postage stamp, featuring Canadian World Heritage sites, centered on a geological interest. These too are “from Canada to anywhere “ prepaid cards.

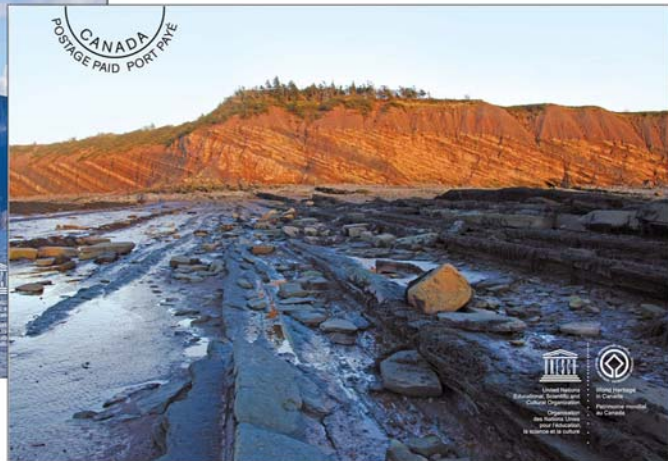
The first set of five cards includes:

- Gros Morne National Park (NL) (#262376)
- Joggins Fossil Cliffs (NS) (#262377)
- Canadian Rocky Mountain Parks (AB & BC) (#262378)
- Nahanni National Park (NT) (#262379)
- Miguasha National Park (QC) (#262380)

Full set of 5: #262381, available by mail and online only



262376: Gros Morne (NL)



262377: Joggins Fossil Cliffs (NS)



262378: Rockies (AB & BC)



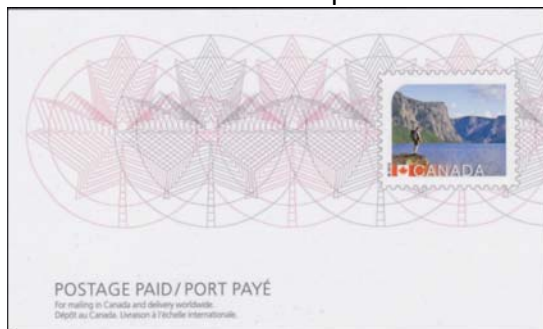
262379: Nahani (NT)



262380: Miguasha (QC)

A second set of five follows below. As there are currently 17 World Heritage sites in Canada, it is probable that more will follow in the future.

Shown below are the stamp dies for this set. Postage Paid / Port Payé



Gros Morne National Park (NL) (#262376)



Joggins Fossil Cliffs (NS) (#262377)



Rocky Mountain Parks (AB & BC) (#262378)



Nahanni National Park (NT) (#262379)

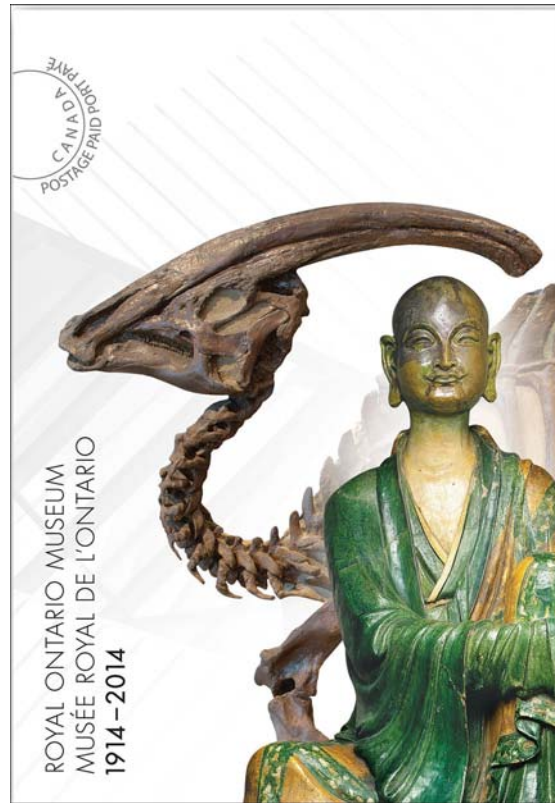


Miguasha National Park (QC) (#262380). Note here the inscription has French first, English second

April 14, 2014: Royal Ontario Museum's 100th Anniversary – three cards, prepaid to anywhere:



262388: Mummified cat & bull



262389: Chinese statue & dinosaur



262390: The new main entrance to the Royal Ontario Museum, The Michael Lee-Chin Crystal

Dies for these cards are shown on the following page.



The Cat & bull die is used on the card of the same image; the Chinese figure & dinosaur die is used on both the card with that view, and the Michael Lee Chin Crystal card

April 23, 1914: Roses Red & yellow (262391 & 262392)



262391: Red Rose



262392: Yellow rose

Shown below are the stamp dies for this set.



Note the use of the "For mailing in Canada..." instead of the current "Postage Paid / Port Payé"— this matches earlier flower cards

May 16, 2014: yV-α# \ , featuring Canadian World Heritage sites with a more historical interest, was issued in May. These too are prepaid to anywhere cards.

The second set of five cards includes:

- Lunenburg (NS) (#262394)
- SGang Gwaay (BC) (#262395)
- Rideau Canal (ON) (#262396)
- Grand Pré (NS) (#262397)
- Head-Smashed-In Buffalo Jump (AB) (#262398)

Shown below are the stamp dies for this set.



Lunenburg (NS) (#262394)



SGang Gwaay (BC) (#262395)



Rideau Canal (ON) (#262396)

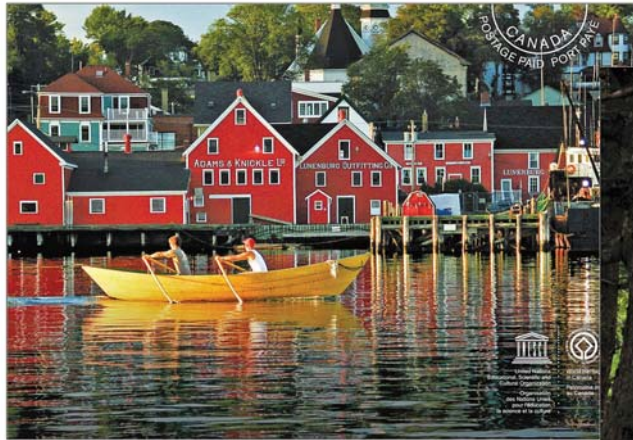


Grand Pré (NS) (#262397)



Head-Smashed-In
Buffalo Jump (AB) (#262398)

Full set of 5: #262399, available by mail and online only



262394: Old Town Lunenburg (NS)



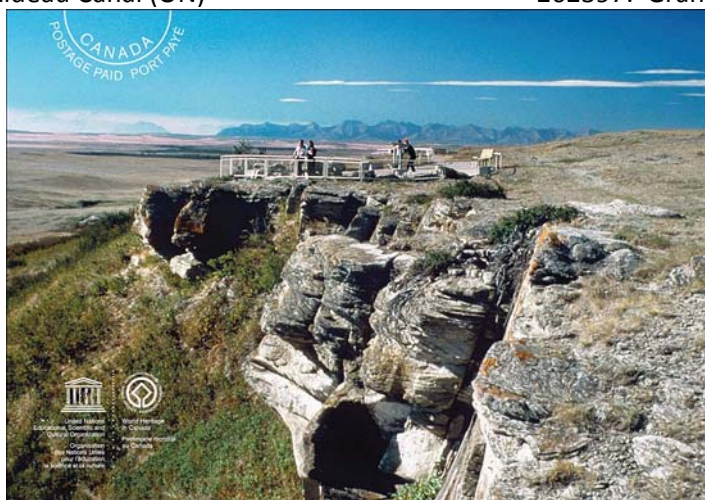
262395: SGang Gwaay (BC)



262396: Rideau Canal (ON)



262397: Grand Pré (NS)



262398: Head-Smashed-In Buffalo Jump (AB)

May 29, 2014: Empress of Ireland 100 year Anniversary – Two cards were issued commemorating the loss of life that occurred when the Empress of Ireland went to the bottom of the St. Lawrence in 1914. Both are horizontal images. One replicated the domestic stamp image, and the other the souvenir sheet issued at the same time.

The set of two cards:

- Empress of Ireland domestic stamp image (close view) (#262400)
- Empress of Ireland souvenir sheet image (at a distance) (#262401)



Empress of Ireland domestic stamp image (close view) (#262400)



Empress of Ireland souvenir sheet image (at a distance) (#262401)

Dies for these cards are shown below:

Empress of Ireland die replicating the domestic stamp image (close view) (#262400)



Empress of Ireland die replicating the souvenir sheet image (at a distance) (#262401)

June 13, 2014: Haunted Canada: A whimsical set of five cards was issued showing different spooks of Canada: The address side is not white, but is a light brown “aged paper.”

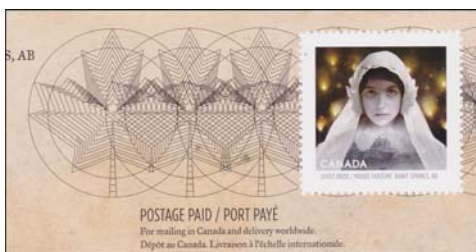
- **The Ghost Bride of the Banff Springs Hotel. (#262360)**
As the story goes, a young woman was descending the stairs in the Banff Springs Hotel on her wedding day. She slipped and tumbled to a tragic end. She is said to inhabit the hotel to this day.
- **The St. Louis Light Phantom Train, in Saskatchewan. (#262361)**
St. Louis, Saskatchewan, is home to the St. Louis Light, also known as the St. Louis Ghost Train. For over 80 years, on a stretch of abandoned rail north of town, some have witnessed a glowing light believed to be the spectre of a long dead Canadian National Railway (CNR) conductor who literally lost his head in the 1920s to a passing train.
- **Niagara-on-the-Lake’s haunted Fort George. (#262362)**
Fort George’s legendary phantom footsteps and ghastly ghosts with this spooky postcard. The card depicts 3 ghosts from Niagara-On-The-Lake’s Fort George.
- **The Château Frontenac’s Ghostly Governor Louis de Buade, Count of Frontenac. (#262363)**
Quebec’s Chateau Frontenac hotel’s most famous otherworldly resident: the Count of Frontenac, for whom the hotel is named. The Count is said to wander hotel halls in his 17th century garb.
- **The Fiery Ship of the Northumberland Strait. (#262364)**
This postage-paid postcard depicts a burning ship that is often spotted in the Northumberland Strait between NB and PEI.

Full set of 5: #262365, available by mail and online, and at Canadian post offices.



262360: The Ghost Bride of Banff Springs Hotel. Dies shown below:

262361: The St. Louis Light Phantom Train



262360: The Ghost Bride of Banff Springs Hotel.

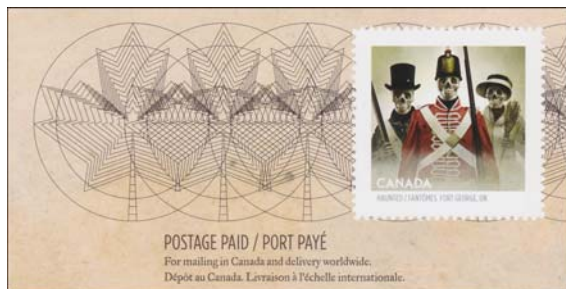
262361: The St. Louis Light Phantom Train



262362: Niagara-on-the-Lake's haunted Fort George. 262363: The Château Frontenac's Ghostly Count of Frontenac.



262364: The Fiery Ship of the Northumberland Strait, showing the "aged paper" address side as well. Dies shown below



262362: Haunted Fort George.



262363: Ghostly Count of Frontenac.



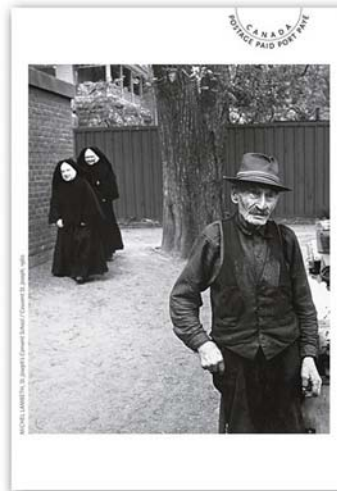
262364: The Fiery Ship of the Northumberland Strait.

July 7, 2014: Canadian Photography – new additions to the set of 7 cards issued in March 22, 2013 – Set of 7 cards, postage to anywhere:

The 2014 edition of the series

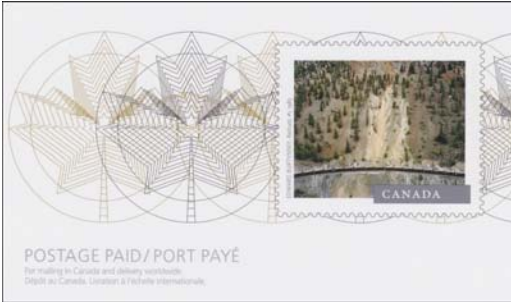
- Edward Burtynsky’s Railcuts #1, Skihist Provincial Park in British Columbia in 1985
- Lynne Cohen’s Untitled (1970)
- C.D. Hoy’s Unidentified Chinese man (circa 1912)
- William Notman’s Sitting Bull and Buffalo Bill (1885)
- Michel Lambeth’s St. Joseph’s Convent School (1960)
- Louis-Prudent Vallée’s Quebec City in Winter (1894)
- Fred Herzog’s Bogner’s Grocery (1960),

Full set of 7: #262393, available to order by mail and online only. These cards have no bar code and no numbers printed on the address side. This matches the 2013 set.



Canadian Photography: Full set of 7: #262393

Dies for the Photography cards are shown below:



Railcuts #1



Lynne Cohen's Untitled (1970)



Chinese man (circa 1912)



Sitting Bull and Buffalo Bill (1885)



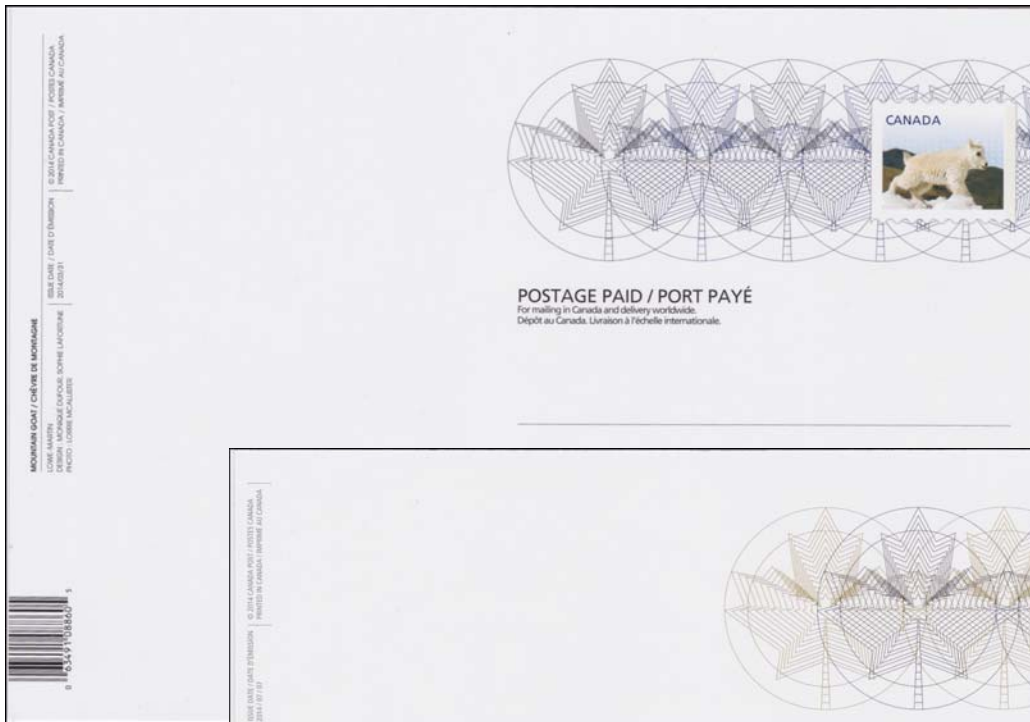
St. Joseph's Convent School (1960)



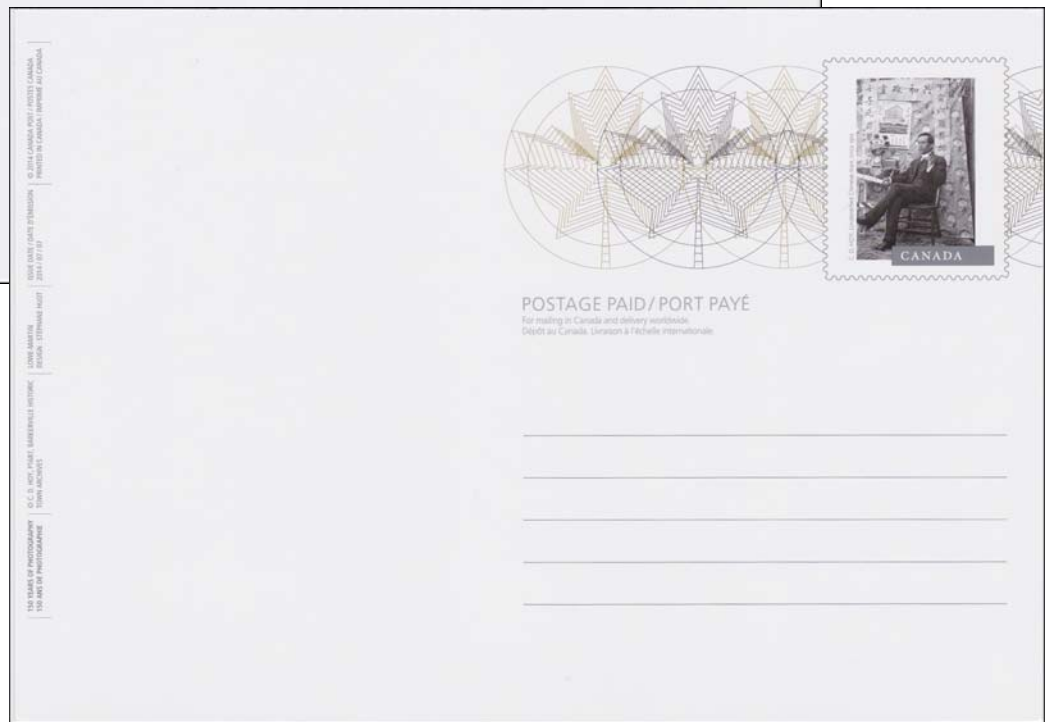
Bogner's Grocery (1960).



Quebec City in Winter (1894)



Typical backs now show a bar code and number, either upper or lower left, as above on goat card.



All of the photography cards have no bar codes or numbers, and are identified by title only.

For more information, see the online issues of Canada Post's Details magazine.

All issues currently on CPC web site:

<http://www.canadapost.ca/cpo/mc/personal/productservices/collect/publications.jsf>

Previous PS Notes New Issues supplements:

[Oct 2013](#)

[Jan 2014](#)