

# A GUIDE TO BAR PRECANCELS

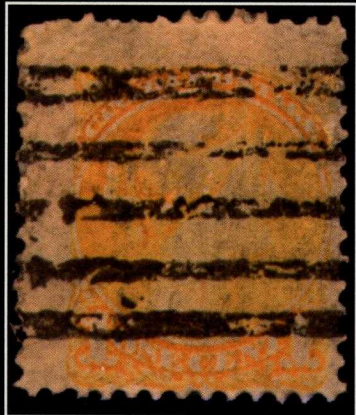
A PROJECT OF THE BNAPS PRECANCEL STUDY GROUP



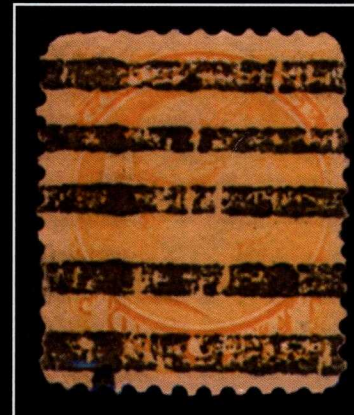
**TYPE A**



**TYPE B**



**TYPE C**



**TYPE D**

**THE PRECANCEL STUDY GROUP**  
BRITISH NORTH AMERICA PHILATELIC SOCIETY





**TYPE E**



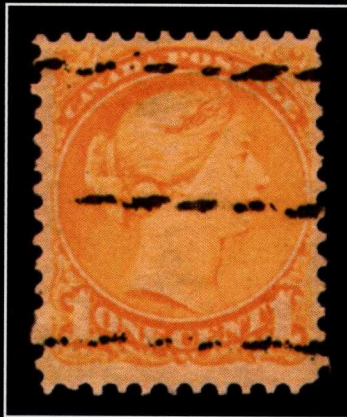
**TYPE F**



**TYPE G**



**TYPE K**



**TYPE L**



**TYPE M**



**TYPE S**



**TYPE T7.0**



**TYPE T8.0**

## ABOUT BAR PRECANCELS

Most collectors of precancels will probably agree that the most difficult precancel to categorize is the bar precancel.

Lacking town names of a given sort and numeric identification, the collector is reduced to staring at lines of various types and sizes.

While catalogs and handbooks on precancels show line drawings and small black-and-

white photos, no source offers a large, easy-to-read and use image.

We have also found that from time to time there are differences in opinion as to which type is which.

Members of the study group submitted scans of the various cancel types from their own collections and the results shown here represent a consensus.

As a consequence of our study, we have developed this guide. The images are all 200% of normal size. If you want to measure something, do so and divide by 2.

Credit goes to the late Hans Reiche and the founding chair of the study group, Andy Ellwood, for their help in compiling the group of examples we have used here.

Bar types A through D appear on the front





**TYPE H**



**TYPE I**



**TYPE J**



**TYPE N**



**TYPE R10.5**



**TYPE R12.5**



**TYPE T10.5**



**TYPE T15.0**



**TYPE U5.0**

cover, E through U5.0 appear above; types U8.0 through Y appear on the back cover of this folder.

It should be noted that there are two varieties of Type A. The bars of Type A (shown here) are 3.25mm thick and 10.0mm apart, center to center, while those of the other variety of Type A are approximately 1.8-2.0mm thick and only 5mm apart.

Again, we would like to caution you that there are variations and a comprehensive reference work should be used in conjunction with this chart.

#### RESOURCES

Kraemer, J.E., Reiche, H., Walburn, H.G. ed. *The Standard Canada Precancel Catalogue 2000*. 4th ed. Toronto: Unitrade, 1999.

Walburn, H.G. et al. ed. *The Canada Precancel Handbook*. Toronto: Unitrade, 1988.





**TYPE U8.0**



**TYPE V1**



**TYPE V2**



**TYPE W**



**TYPE X1**



**TYPE X2**



**TYPE Y**