

---

# PRECANCELS CANADA

THE PERIODIC NEWSLETTER OF THE BNAPS PRECANCEL STUDY GROUP

ISSUE No. 5 - FALL 2016

## CHAIRMAN'S MESSAGE

### **REPORT ON PRECANCEL STUDY GROUP MEETING AT 2016 BNAPS**

The BNAPS Convention held in Fredericton at the end of September was a pleasure to attend. There were many interesting displays of philatelic goodies, with an emphasis on covers. There is no doubt that most serious collectors have moved to covers from stamps which may be a good thing, but one has to wonder why. Perhaps the availability of stamps is putting a crimp in the habits of collectors? In any case, there was some very unusual material which addressed the different ways that are capturing the attention of serious philatelists.

We held a meeting of the Precancel Study Group that was attended by 13 interested collectors, each of whom introduced themselves and their homes which ranged from Texas to Vancouver to Halifax.

Lawrence Pinkney presented an exhibit on the different styles of Bar Precancels on and off cover over a 14 year period. He also included some unauthorized precancels. This led to some interesting questions being raised after the meeting. Well done, Lawrence.

Andy Ellwood passed around a display of precancels with printing varieties that illustrated both "broken" characters and lines as well as a selection of "nailheads". These are areas which have yet to be thoroughly addressed.

A discussion addressed the scarce usage of higher value precancels and why they were used. The meeting wrapped up with a discussion of the regulations regarding the precancel process as to how and by whom precancels were ordered and printed.

Fortunately, while I was busy presiding and presenting, our study group secretary Gary Steele was taking notes on our group's meeting. Without his input, I would still be trying to write this article and you would still be waiting for a newsletter issue.

Thanks, Gary!

Andy Ellwood  
Chairman

---

**THIS IS YOUR NEWSLETTER.**

**WHAT HAVE YOU DONE TO HELP MAKE IT HAPPEN?**

---

## COMING EVENTS

The information for "Coming Events" has been taken from the website of the Royal Philatelic Society of Canada (RPSC) at [www.rpsc.org/shows](http://www.rpsc.org/shows).

### October 29, 2016 – Cambridge, ON Grand River Valley Philatelic Association (GRVPA) Club Fair

United Kingdom Hall, International Village Drive,  
Cambridge, Ontario  
Show Hours: 10AM–4:30PM  
12–14 clubs, 450 circuit books, 2 silent auctions  
(approx.. 300 lots), snack bar, free admission, free  
parking  
Contact: Mr. Stuart Keeley/Email: [stuart.keeley@sympatico.ca](mailto:stuart.keeley@sympatico.ca)

### November 4–5, 2016 – Hamilton, ON Hamilton Fall Show, Hamilton Stamp Club

Bishop Ryan Secondary School, 1824 Rymal Road  
East, Hamilton, Ontario  
Show Hours: Friday 5PM–10PM; Saturday 10AM–  
4PM  
Large silent and voice auctions Friday evening; viewing  
starting at 5PM. Saturday is a 20 dealer bourse with  
stamps, postal history, postcards, supplies, youth  
booth, and a silent auction 10AM–4PM. GRVPA club  
circuit books available Friday and Saturday. Light food

and refreshments available. Ample free parking.  
Contact: Mr. Steve Forten/Email: [sothont@coaeo.ca](mailto:sothont@coaeo.ca)  
Website: <http://www.Hamiltonstampclub.com>

### November 12, 2016 – Summerland, BC Summerland Stamp Show Bourse Okanagan Mainline Philatelic Association

St. Stephan's Anglican Church, 9311 Prairie Valley  
Road, Summerland, British Columbia  
10AM–4PM  
Show Hours: Free admission, door prize, stamp  
auction  
Contact: Mr. Roy Heinrichs/Email: [rhein2@telus.net](mailto:rhein2@telus.net)  
Website: <http://www.okanaganstampclubs.ca>

### November 26, 2016–Waterloo, ON Waterloo Region Stamp Club Annual Show: StampfunWa- terloo Region Stamp Club

Royal Canadian Legion, 316 Marstand Drive  
Waterloo, Ontario  
Show Hours: 10AM–4PM

10 dealers, silent auction, door prizes. Free ad-  
mission and free parking. Coffee and donuts in  
the morning. The Legion operates a lunch count-  
er.

### The POSTAL HISTORY SOCIETY OF CANADA *offers its members:*



APS affiliate 67  
PHS Inc. affiliate 5A  
RPSC affiliate 3

*Join today!*

- A gold-medal winning quarterly publication, the *PHSC Journal*
- A research website with searchable:
  - Back issues of the *PHSC Journal*
  - Post office listings of Canada
  - Up-to-date Canadian cancellation databases
  - Articles and exhibits
- Ongoing online project on BNA Postal Rates
- Study groups, many of which publish their own newsletters and databases
- Postal history seminars and awards
- Research funds
- The fellowship and knowledge of other Canadian postal history enthusiasts
- [www.postalhistorycanada.net](http://www.postalhistorycanada.net)

*For a membership application form please visit our website or contact the Secretary:*

EMAIL: [secretary@postalhistorycanada.net](mailto:secretary@postalhistorycanada.net)

**EDITOR'S MESSAGE**

**THANKS!**

One of the first things I learned about communications was that repetition builds awareness, which, in turn, helps create attitude (hopefully, favourable).

I am not sure that the influx of articles was due to my keen knowledge of communications theory or my adeptness in crying, begging and otherwise cajoling my fellow members. Regardless of which approach worked, it is a load off of my tired mind and body to have enough material for this issue and a head start on issue 6. Thank you.

Do not become flushed with success and think that continued submission of material is not necessary. The last thing any of us need is starting an issue under catastrophic conditions. **Please, please, please** continue to send material for publication. Thanks again.

My special thanks to all of you who have provided the material to which I have made reference. As to the balance of our membership ... umm ... thanks for reading "Precancels Canada?" (At least I hope you read it. Pretty weak, eh?)`

Larry Goldberg  
Editor

**DON'T  
MISS  
OUT!**

**The third section of the Duncan McDonald Precancel Collection will be sold at Ocean Park Auctions in February, 2017. If you want to participate and have not registered, contact David at:**

**[david@oceanparkstampauction.com](mailto:david@oceanparkstampauction.com)**

**AVAILABLE SOON: 2017 UNTRADE SPECIALIZED CATALOGUE OF CANADIAN STAMPS**

**WHAT A DEAL!**



The 2017 edition of the Untrade Specialized Catalogue of Canadian Stamps is bigger and better than ever: 730 pages of information that is second to none. So is my offer to supply you with your copy.

Suggested retail price is \$48.95. My price to you is the low, low price of only \$33.99. plus shipping and handling. (That's \$5 cheaper than the price I'm offering on eBay!)

Preorder your copy now; the last 4 editions sold out in a month, so place your order today.

Just send me an email confirming your order and I will send you a Paypal invoice when the books arrive. My email address is: [dwalnwri@rogers.com](mailto:dwalnwri@rogers.com).

**Stamp Wright**

---

## FREDERICTON PRECANCELS ON ADMIRALS

### CORRESPONDENCE BETWEEN PETER MCCARTHY & LEOPOLD BEAUDET

*Editor's Note:* In order to offer some background on this correspondence, I thought it best to provide you with some background that I received in the covering email from Peter. I have taken the liberty of editing out any of the correspondence that did not directly pertain to the subject at hand.

“A little over five years ago, my cousin, who has since passed away, gave me his precancel collection and in it were Admiral blocks as per the attached scans. I sent them on to Leopold Beaudet knowing he would be interested in seeing them. Leo did an analysis as you will see by the letter and the two enlarged photocopies he made with attached notes. ....”

#### LETTER FROM BEAUDET TO MCCARTHY

“Many thanks for sending me your blocks of the Admiral 2¢ green with the Fredericton precancel.... It isn't often that one sees large blocks of any Admiral stamp, even the common low values, so it was a treat to be able to examine your three blocks.

“In your 12 December email, you had noted white breaks on three stamps in the block of 15 (See *Figure 1* on the facing page) in the block of 15 (bottom row, column 2; row 3, column 3; row 4, column 3). I believe that these are just transient inking varieties. Also, I believe the ‘scar-like line that runs from the centre stem of the lower right male leaf to the 5 of cents’ on the stamp of row 2, column 3 is a crease in the paper. You can see it from the gum side.

“As you pointed out, the spacing between occurrences of the town name is very interesting. Since the spacing is less than the width of the stamp, one can't help get mostly off-centered precancel overprints, at least for the Fredericton precancel.

“There are other interesting features on your blocks, which I've described on the two enclosed sheets. The 2¢ green was printed from plates 159 to 229, quite a large number. However, using ‘design type’ characteristics common to all the stamps on your blocks and (using) Marler's 1982 book on the Admiral issue,<sup>1</sup> I believe your stamps were created from one of the following four plates: 219 to 223. In addition, the stamp designs are all shifted slightly with respect to each other. Although the enclosed sheet (*Figure 1*) analyses your block of 15, I believe the same applies to your other two blocks. (See *Figures 2* and *3*.) I think this is interesting on its own because it shows that the siderographer<sup>2</sup> was experiencing problems laying down the plate. In addition, it may allow identification of the specific plate used to print these stamps. At some

point, I hope to examine the 2¢ green plates at Library and Archives Canada. If I am able to determine the plate your blocks came from, I'll let you know.”

1. Marler, George C., *The Admiral Issue of Canada*, State College PA: American Philatelic Society, 1982.

2. A siderographer reproduces original engravings on metal plates used to print banknotes, bonds, and other securities, using gravers' handtools and machines.



*Figure 1 (above).* With the help of the black lines at the top and right side, one can see that the stamps in the same row are shifted upwards as one goes from the left column to the right. Stamps in the same column are shifted to the right as one goes from the top row to the bottom row.

The five black horizontal lines are lined up with the bottom frame of the stamps in the left column. The lines show that the stamps in column 2 are shifted up with respect to those in column 1. Those in column 3 are shifted up slightly more,

The three black vertical lines are lined up with the left frame of the stamps in the top row. The lines show that the stamps in subsequent rows are shifted to the right by small amounts. The size of the shift increases as the row number increases.



Figure 2. All the blocks are from a dry printing on the re-engraved die. A characteristic of the plated from the re-engraved die is the slight extension of the bottom frame into the right margin (arrow 1 in the illustration above). Another characteristic of many re-engraved die plates is a small dot in the left margin opposite the bottom of the left numeral box (arrow 3). This characteristic is specific to Marler's Design Type RE3 (page 330). Thus the blocks must come from plates 219 to 223.



Figure 3. Believed to have been printed from plates 219 to 223. This block of 14 is from the same sheet as the one shown as Figures 1 and 3.



Figure 4. Believed to have been printed from plates 219 to 223. This block of 12 is from the same sheet as the one shown as Figures 1 and 2.

## PRECANCEL SHOW, TELL, ASK or COMMENT

### COMBINED COLUMNS

As I was editing this issue, I noted that it was often difficult to tell the difference as to who had a mystery or who had an item for show and tell or what? As a result, I decided to combine them into one and call it: "PRECANCEL SHOW, TELL, ASK or COMMENT." Here's how it works:

1. Send in an item and state your comment or ask your question; and
2. Readers can either answer the question, comment on the item, or keep on reading. Simple enough?

If you have anything to submit to this column, please email it to [Tim Arthur at mrface3@aol.com](mailto:Tim Arthur at mrface3@aol.com).

### IDENTIFY THESE PRECANCELS

This is old business, but my fault, as I kept giving people a wrong address for Tim.

#### AN ANSWER FROM TOM MEYERHOF TO THE TWO PRECANCELS SHOWN IN "PRECANCEL PUZZLES" IN NEWSLETTER 2.

"In looking at Precancel - 1 on the 10c Small Queen, I believe it is indeed a precancel, type I. My reasoning based on the scan, is that the 7 bars appear to be about 1 mm wide and the bar spacing about 2 mm (type I) versus a 1.25 mm spacing characteristic of type J. While the bars are a bit messy, not quite touching the left margin or well-centred on the stamp, I believe this is the result of a poor precancel application by hand using a self-inking roller. The overall appearance to me suggests a precancel not a grid or machine cancel, the only other cancellation options I can think of.

"In considering Precancel - 2, I believe this is a fake as the 1c green Admiral (Unitrade 104) is not known with a bar precancel. When the original wet printed Admiral series (including the 1c green) were issued starting in 1912, city style precancels were used exclusively by the Post Office, with the bar style resuming again in 1922. Thus most Admiral stamps with bar precancels will be the later issued values and colours, and in dry printings which started in 1923. Wet printed bar precancels of the original Admiral series will be from later plates before the switch to dry printings was complete. The last 1c green stamps from plate 170 were issued in 1921 when the Post Office still used city style precancels. The 1c yellow Admiral which replaced the 1c green was first issued in wet printings between 1922 and 1925 and is known with the bar precancel, as the Post Office had returned to the bar style at this time.

"I look forward to seeing the consensus and expert opinions in due course."



Tom also sent a request for identification and comments on the five precancels shown above.

Please refer to the stamp(s) by number when you respond.



#### IS IT A SASKATOON PRECANCEL OR NOT?

Cecil Coutts sent us an interesting looking stamp with a what appears to be a SASKATOON precancel or is it? We have a variety of opinions, but let's hear what you other experts have to say. See scan above.

Welcome to the study group, Cec.

#### A UNIQUE PERFIN PRECANCEL OR WHAT?

*This request was sent to us by Jim Gtatham, the editor of the "BNA Perforator." the newsletter of the BNAPS Perfin Study Group.*

Here are the front and back scans (see facing page) of a P3-112-1 with a complete punch of the W. J. Gage Co. W10 pattern. It looks perfect in all respects, the pattern on the stamp overlaying perfectly on the pattern image in the 4th Edition.<sup>1</sup>

1. Johnson, J. and Tomasson, G., eds. *Canadian Stamps with Perforated Initials*. BNAPS Perfin Study Group, 4th Edition,

It of course makes no sense to me because the W10 pattern is not yet known past the Edward issue and the 5c violet Admiral was issued in 1922. Presumably the perfin punch on all precancels would have been applied after the pre-cancel printing by the PO, so finding the tell tale signs of a “manufactured” used perfin after it had been cancelled by the PO in the regular mail would tell us nothing.



Is there a plausible explanation for this stamp being genuine? How can we determine if it is indeed a fake? So far this is the only copy but perhaps a precancel collector with no interest in perfins has one like it.

Your thoughts would be appreciated. Again, several members have commented on this, but I have held back their opinions to avoid bias.

**INTERESTING COMMENTS ON JUBILEE PRECANCEL BY JOE SMITH**



To the best of my knowledge, the 3-cent Jubilee is the only known copy in existence. of the 21 roller . I have seen copies on the low value leafs ( 1-, 2-, 3- cents ), but do not own one. It could also exist on the numerals as well.

This came from Stan Lum many years ago. At the very least we can presume a half sheet or full sheet was done possibly as an experiment or to satisfy a quick fix for a customer needing a small supply of precancelled stamps when the existing stocks had been exhausted . If you look very closely you will note one imprint is perfectly aligned ( Right ) whereas the left is slightly tilted . This suggests that a ruler/straight edge was used to apply the roller in a reasonably straight line

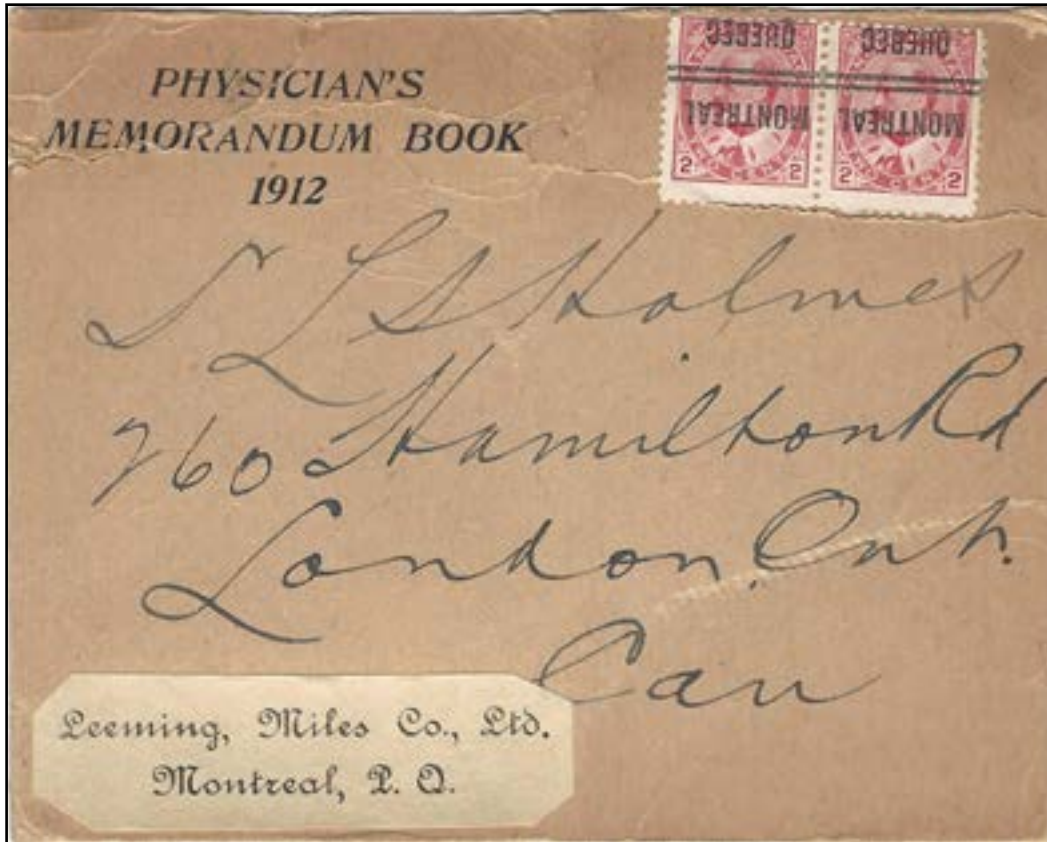
The long U precancel on the Jubilee came from Harry Lusseys sale. It is, in my opinion, a unique subtype of

the normal U style. which, so far, does not merit a listing. It is not a one-off; as you can see, an example on the 1 cent numeral exists. I have seen a few others as well in my searches but was unsuccessful in acquiring them. I recall them being leaf /numeral copies . This one came from a junk lot of stamps. It is easily identifiable and how it came into creation is a mystery. Another experiment or just happenstance at the printers. It could even be just 1 cliché on a plate (perhaps used to strengthen a weak one much as we use the term reentry). However, it does seem to extend beyond the border and probably repeats itself on every position. Looks too good to be a fake creation. I am looking for input and comment from others who may have examples.

**ANONYMOUS REQUEST FOR ID's ON FIVE PRECANCELS**



**EDWARDIAN FRANKING WITH MONTREAL PRECANCELS  
ON PACKAGE MAILING**



I have been looking for King Edward VII precanceled stamps on letters, parcel labels, illustrated mail pieces, etc. with limited success. I am particularly interested in examples of the higher values, 7¢, 10¢, 20¢ and 50¢, used on most anything.

The piece of a larger package used to mail a book is an example of the material I am looking to add to my collection. Since Montreal precancel stamps were used it can be assumed that the mailer had a large volume of books to ship. The parcel was mailed by the Leeming, Miles Co., Ltd., a member of the National Wholesale Druggists' Association.

Since precancels were frequently used for mass mailings, today's junk mail, most examples were discarded or the stamp was cut off the parcel and subsequently washed. After all, who saves their junk mail?

Posted: Montreal, P.Q.

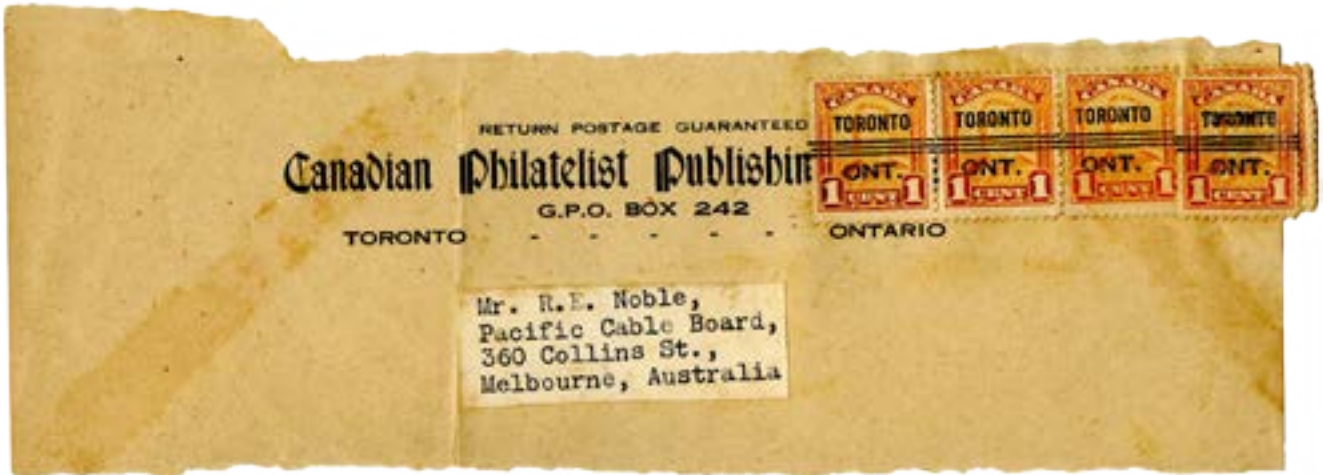
Received: London, Ont.

Rate: 1¢ ≤ 2 ounces for 8 ounces, 4¢'

George R. Dresser



**TWO INTERESTING PRECANCELLED ITEMS  
WITH MUTIPLE FRANKINGS**



(Above) Multiple precancels on a wrapper are much scarcer than your normal single stamp precancel cover, but on a wrapper going to Australia is much sweeter. Shown are five 1 cent Scroll precancels Toronto #12-149.

Although on a Canadian Philatelist Publishing wrapper, these are becoming more popular from a historic perspective lately.

(Below) A nice Advertising label from The Dall Real Lace Co. Granville St. Vancouver, B.C. to Berkeley Calif. USA total franking 42 cents with 8 x 5c #2-112 and a 2c #2-107. I do not have the rate of what the item would weight. Will try to find out and advise.

An exceptional piece.

Gary Steele



**PRECANCEL STUDY GROUP MEMBERS PLEASE NOTE:**

**WE PLAN TO PUBLISH ISSUE #6 BEFORE THE END OF 2016  
PLEASE GET ARTICLES AND OTHER MATERIALS  
TO THE EDITOR ON OR BEFORE 10 DECEMBER 2016**

**LOOKING TO ADD TO YOUR PRECANCEL COLLECTION?**



BNAPS members can find a wide range of items at reasonable prices in the BNAPS Exchange Circuit.

For more information, contact Andy Ellwood at: [andy\\_ellwood@rogers.com](mailto:andy_ellwood@rogers.com)



**DEVENEY STAMPS**

SERVING CUSTOMERS & HELPING BUILD COLLECTIONS SINCE 1977

**CANADIAN PRECANCEL SPECIALISTS**



**OUR ENTIRE INVENTORY IS AVAILABLE  
FOR RISK FREE APPROVAL.**

**WWW.DEVENEYSTAMPS.COM**

**Toll Free: 1.888.232.0282**

**info@deveneystamps.com**