

# PRECANCELS/CANADA

WHOLE NUMBER 6 • JANUARY, 2002

## CHAIRMAN'S COMMENTS by Andy Ellwood

Another year is just about over and it has been quite a year. I doubt that anyone would have been able to predict the events that have occurred this year and maybe that is just as well.

The major BNAPS event of the year was the BNAPEX Convention which we were honoured to be able to host here in Ottawa. The Committee of 12 worked hard for over two years in preparation and the result was certainly worth every minute. Over 200 members registered; 25 dealers were in attendance; 250 frames were exhibited, including an excellent presentation by Bruce Fields on Precancels which was awarded a Gold Medal. Well done, Bruce!!! There was also a lovely exhibit by Alan Selby which included many fine Precancels of the Edward Experimental coils.

The Precancel Study Group met during the Convention with a half a dozen members in attendance. Jim Kraemer led a discussion about the Catalogue which resulted in concurrence by all present, of the Editors' intention to require Certificates of Authenticity for any new listing of a precancel which is valued at \$500 or more. Bruce Fields gave a short talk about the Precancel printing process that he has researched through a printing contact who still has a operational printing press which could have been used for Precancels in Montreal. There were several rare items circulated for viewing, including a set of Truro and a set of Military Precancels.

Unfortunately, both Larry Goldberg nor Duncan MacDonald had to withdraw at the last minute and there were missed.

Larry Goldberg has completed his efforts to produce a Guide to Bar Precancels and a fine product it is. He used actual stamps received from members as the basis and has produced an excellent document. Each member has received a free copy of the Guide with this Newsletter (or directly at the Convention). A few additional copies are still available and can be purchased for \$5.00 plus S/H.

On the Executive front, I am sad to report that Larry Goldberg has decided to cut back on his philatelic involvements and will leave Precancel collecting. Consequently, this Newsletter will be his last effort for us. He has set a standard that will be hard to maintain and his efforts have been rewarded with several medals and much recognition. Many thanks, Larry, for your hard work and for your leadership in getting the Study Group off to a great start.

Fortunately, I can report that Larry's replacement as Editor has been found in the person of Sean Michel. Sean is also in the publishing business and it can be hoped that he will be able to carry on Larry's standards. Sean is resident in the Ottawa area so I am sure that he will continue to pressure me to keep him supplied with articles. Welcome aboard, Sean.

Elsewhere in this Newsletter is the announcement of the ap-

pointment of Bruce Fields as an Editor of the Precancel catalogue. Bruce's diligence in research has demonstrated the qualities required in this demanding position. Congratulations, Bruce, on your appointment. And thanks to Jim Kraemer and David Marasco for continuing their efforts in maintaining a high standard on the Editorial Board of the catalogue. We all look forward in great anticipation to the next edition of the catalogue. When will it be, I wonder?????

I must also advise that we have only had 5 people renew their membership dues in the Study group for 2001. I am sure that this is only forgetfulness on your part, but your contribution is sorely needed. Please send your dues for this year (and for 2002, if you can) right away. US members should send their \$10.00 US to Wayne Walton and Canadian members should send their \$15.00 Cdn to me. Your continued financial support is essential if we are to keep this Study Group going. The cost of the Bar Guide has just about depleted the coffers at present.

That's about all for now. Let's keep the research efforts underway. Some articles for the Newsletter would be greatly appreciated.

Best regards.

Andy Ellwood



**IN THIS ISSUE**

Chairman's Comments ..... 1  
 "The Canada Precancel Handbook" ..... 2  
 A Word from Your Editor ..... 2  
 This and That In Precanceles .. 3  
 Letters to the Editor ..... 4  
 Reasons ..... 5  
 Current research Projects ..... 7  
 Oddities ..... 8  
 WANT LISTS ..... 8

\*\*\*

**PRECANCELS/CANADA is published quarterly by the BNAPS Precancel Study Group**

\*\*\*

**OFFICERS**

**Chairperson:**

Andy Ellwood  
 PO Box 83004  
 Ottawa, Ontario K1V 1A3  
 CANADA  
 Phone: (613) 737-2137  
 Email: andy\_ellwood@msn.com

**Membership Secretary/  
 Treasurer:**

Dr. Wayne Walton  
 589 Thomas Jefferson Circle  
 Madison, TN 37115-2165  
 Email: Waltonwl@aol.com

**Webmaster:**

Duncan MacDonald  
 15407 75th Avenue  
 Edmonton, Alberta T5R 2Y9  
 CANADA  
 Phone: (780) 487-8943  
 Email: duncan@camacdonald.com

**Editor:**

Larry Goldberg  
 PO Box 7170  
 Buffalo Grove, IL 60089-7170  
 USA  
 Phone: (847) 808-9575  
 Email: editor@kg6.com

**"THE CANADA PRECANCEL HANDBOOK"**

The following letter was received from Jim Kraemer and is reproduced here in its entirety:

Dear Larry:

Please be advised that Bruce Field, St. Lambert, Quebec has been appointed as the third member of what is known as, The Precancel Committee. The committee consists of three editors:

Bruce Field, St. Lambert, QC  
 James Kraemer, Ottawa, ON  
 David Marasco, Surrey, BC

The rights and ownership of "The Precancel Handbook", and "The Standard Canada Precancel Catalogue", belong to The Precancel Committee.

The foregoing two works are copyright including the numbering system with all rights reserved in the name of The Precancel Committee.

The editors are revising the catalogue. A new edition will likely be published in late 2002 or early 2003.

With so many dubious precanceles being "discovered" it has been suggested that all precanceles that are now in trhe catalogue and which catalogue \$200.00 or over should have a certificate of authenticity from a recognized organization, e.g. The Vincent Graves Greene Philatelic Research Foundation, in order to be given catalog

status. Members of the study group are asked to express their opinion concerning this suggestion.

Yours sincerely

James E. Kraemer for  
 The Precancel Committee

**NOTE:** The last paragraph of the letter was set in bold type to get your attention. This is a matter of no small importance and one in which your opinion is requested.

Jim can be reached by email at: jkraemer@magma.ca or by snail mail at 17 Commanche Dr., Ottawa, ON K2E 6E8.

**A WORD FROM YOUR EDITOR** by Larry Goldberg

As Andy told you in his comments on the front page of this issue, this will be the last issue that I will edit.

My reasons are the usual: there are just so many hours in a day. In addition to editing this newsletter, I also edit a quarterly publication for KGVI collectors that takes a good chunk of time to fill the 28 to 32 pages per issue.

In addition, I publish philatelic books on Commonwealth postal history and stamps. last year we published five new titles and already have four planned for the first quarter of the new year. And these two jobs are only my sidelines.

I own an ad agency with a strong specialization in the healthcare industry.

And if that isn't enough, until recently I was actively involved in Christian ministries serving as preaching pastor at a local church of the Christian and Missionary Alliance as well as guest preacher at a number of churches in the greater Chicago area. This is a part of my life that I have sorely neglected in the last year; I need to get involved again.

So something had to give ... other than me.

It was a lot of fun helping to start this group, and I hope that it will flourish.

My thanks to **Martin Cross** for the information and articles he provided for this issue. Also, thanks to **Wayne Walton** and, of course, **Andy**

**Ellwood** for their contributions.

My apologies to **Bruce Fields** who took the time to send an article and a CD with scans. Unfortunately, I did not check the CD until I went to publish this issue. For some reason it would not open. Hopefully, Bruce will correct the problem and send it to Sean for the next issue.

Blessings.

Larry Goldberg

## THIS AND THAT IN PRECANCELS by Wayne Walton

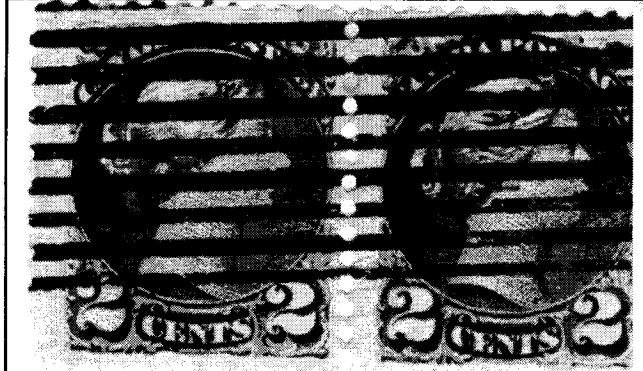
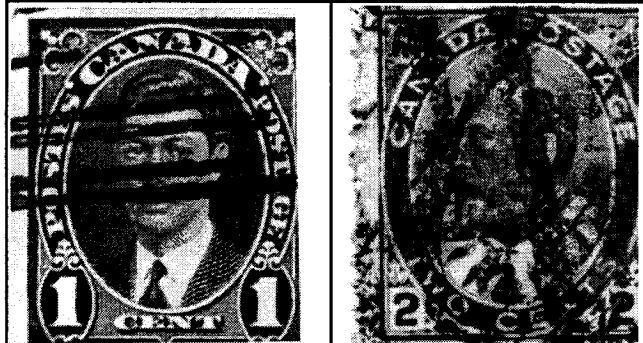
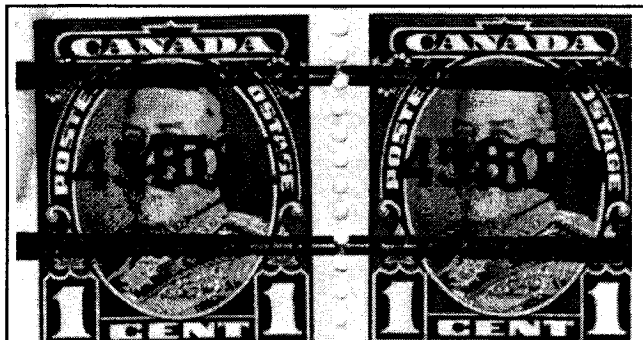
The following seven items with unusual characteristics have been accumulated over 30 years of collecting. Although most are different from the regular issues, most may be unique or very limited in number. Each photo speaks for itself.

1. The pair of Toronto 13-217-D is not a rare precancel, but in this case the doubling is horizontal and not vertical. This is the first double of this type that I have found. *(Top)*

2. The Montreal 8-197 shows a complete lack of the upper bar. There is also a slight loss of the last "0" in 0700. This probably resulted when the previous sheet did not advance forward enough and the upper bar was printed on the salvage of that sheet when the next sheet was imprinted. *(Second row, left)*

3. Canada 74 seen here has an unusual precancel. I sent this to Geoff Walburn in the early 70's and he was not able to determine that type of precancel that is present on the stamp. I have no idea either. *(Second row, right)*

4. Precancel X-231 shows that the sheet was moved in a motion to the upper right while the imprint was being applied. This resulted in the imprint being applied in an unusual way. The device was most probably rubber, which allowed for the distortion. *(Third row, left)*



5. Precancel U-90 shows a vertical imprint from lower left to upper right, from lower right to upper left, and one normal horizontal imprint. I have no idea how such an imprint might have been produced in normal imprinting of the stamps. *(Third row, right)*

6. Precancel V-166 shown on this pair of stamps shows that the ends of the sheets often received a less distinct and somewhat broken imprint. Also the upper bar is made up of 4 parallel lines which might indicate that the bars were not one solid piece but were made up of closely spaced parallel rubber lines. *(Fourth row)*

7. Precancel I-36i shows in this pair that the inclined imprint is not a part of a roller cancel but the sheet was just not fed in correctly. I have several multiples of both I and J types that show these slanted imprints. Precancel type J shows this type of imprint very often even to the point that the imprint is on the diagonal of the stamp. *(Bottom row)*

## LETTERS TO THE EDITOR

My apologies to Martin Cross for taking so long to publish this letter, but it arrived right after we printed issue 5, and this is, in fact, the next issue. His comments here refer to articles that appeared in issue 4 of this publication. Many thanks for taking the time to write, Martin. Ed.

Martin wrote:

*Starting with Allan Magee's note on the two covers illustrated on page 7. The first thing that struck me is that there is no date stamp on them, this leads me to think that they are 3rd or 4th class mail, just the type mail that precancels are used for. The size of a bulk mailing that qualified for precancel stamp usage in the 1890's I have not been able to determine in my research as yet but logic dictates that 100+ items would seem a sensible number for such a minimum size. What then if someone came with say 105 items this would require one complete pane of 100 stamps precanceled plus a further five stamps. The five extra items could have normal stamp attached and*

*then be cancelled with the roller and then be handled with those, which had precancel stamps affixed. The letter from J.B. Lewis has traces of Type J roller in two places on it, which could be overrides from such roller cancels. The second cover is interesting additionally because it is to a destination outside Canada, Saginaw in Michigan USA, the question I have is 1¢ the correct rate for this letter. In addition it would have been useful to know what information any back stamps on the letters would give us. The late David Izzett was kind enough to allow me access to the collection of H.G. Walburn, which he bought, and at one of the meetings with him we discussed the Type J roller largely to ascertain the town of use. Although we came to no firm conclusion, the town we thought most likely was Ottawa and the first cover would have been useful to help confirm this. On looking through the notes I made at the time, we commented on a number of blocks and strips in the collection which supported the idea that four*

*and five bar precancels that exist with Type J line widths and spacing are in fact made with a Type J roller run over alternate rows of perforations, the postmaster thus having to run the roller only five times over the sheet of stamps.*

Martin also commented on various articles by Duncan MacDonald, to wit:

*Turning now to Duncan MacDonald's contribution on page 6. The enclosed photocopy of a full 100 stamp pane of precanceled stamps (See facing page) shows exactly why the positioning is not consistent on all stamps. It can be seen that the size of the overprinting plate is less than the size of the pane of stamps. A further point to remember is that in most cases there are four different margin layouts for the pane, which are derived from the cutting of the printed sheet of 400 stamps into 100 stamp panes.*

*Still with Duncan MacDonald, but this time with*

*his comments on page 3 regarding style 10 precancels. At least two plates were made for this style, the first one was in use from 1936 when the Canadian Bank Note company gained the contract to print stamps until 1941-42 when the warning strip legends were added to the overprinting plate. Perhaps it is worth reminding collectors that from when the Canadian Bank Note company took over the contract to print precancels they used a Heidelberg Press the plate of which overprinted all four panes of 100 stamps on the sheet of stamps at the same time. This means that if the 0700 had been entered incorrectly in one position on the plate, the frequency of occurrence would be 1 in 400. The press was in use until 1957 with this sheet layout. When the sheet layout was changed, no further overprinting plates for the three cities still using Money Order Office Numbers were made and these cities then used Style X or Style Y precancels.*

## SUBMISSIONS TO THE EDITOR

In the future, all material for the newsletter should be sent to our new editor:

**Sean Michel**  
**1411-A Carling Avenue**  
**Ottawa, ON**  
**K1Z 1A7**  
**CANADA**

To make things a little easier, please key your illustrations to the text, so the editor does not to have guess at what you had in mind.

Speaking from experience, little things like that go a long way toward assuring you that every issue doesn't have a new editor.

If you are citing other periodicals or books, please provide good bibliographic references. In the case of a book, this means that you should supply the name of the author, the exact name of the book, place of publication,

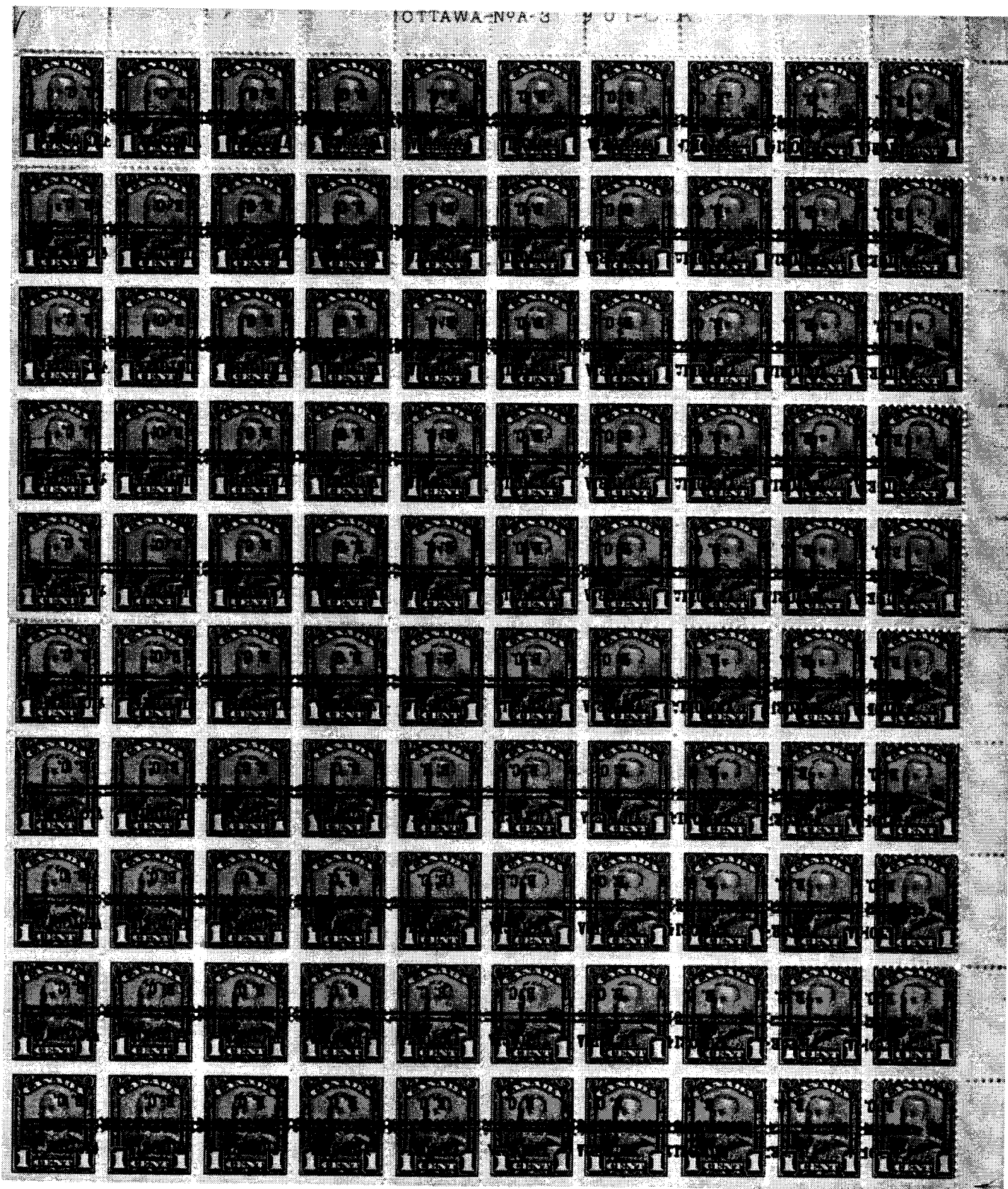
publisher's name, year published, and if you are citing a specific piece of the text, the page or pages upon which the reference appears. If the reference is to a publication article, show the author's name, the article title, the publication's name, volume number, issue number and/or whole number, month and year of the issue, and page numbers.

We have a set of submission

standards that you can obtain on request from the editor.

•  
 Please share your knowledge with your fellow study group members. Write articles; comment and/or correct those that others have written.

**NONE OF US  
 IS AS GOOD  
 AS ALL OF US!**



Sheet shows exactly why the positioning is not consistent on all sheets. See letter on facing page.

## REASONS by Martin Cross

The block of 50 Toronto precancelled stamps Type 3-89-I shown here provides answers to some of the frequently asked questions about why many of the available precancels are of such poor quality.

The block of 20 Ottawa precancelled stamps Type 3-149 gives the answer to the ques-

tion: "Why is it difficult to find well-centered precancels?"

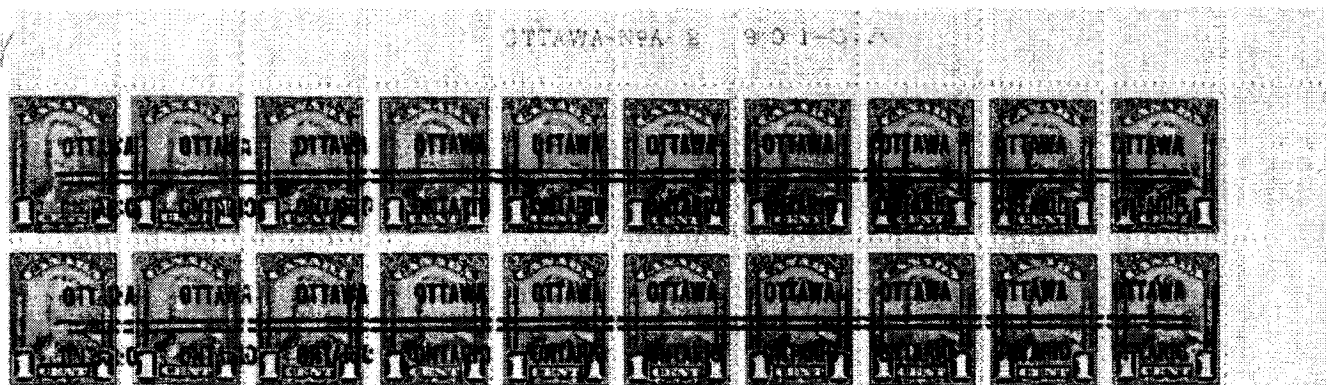
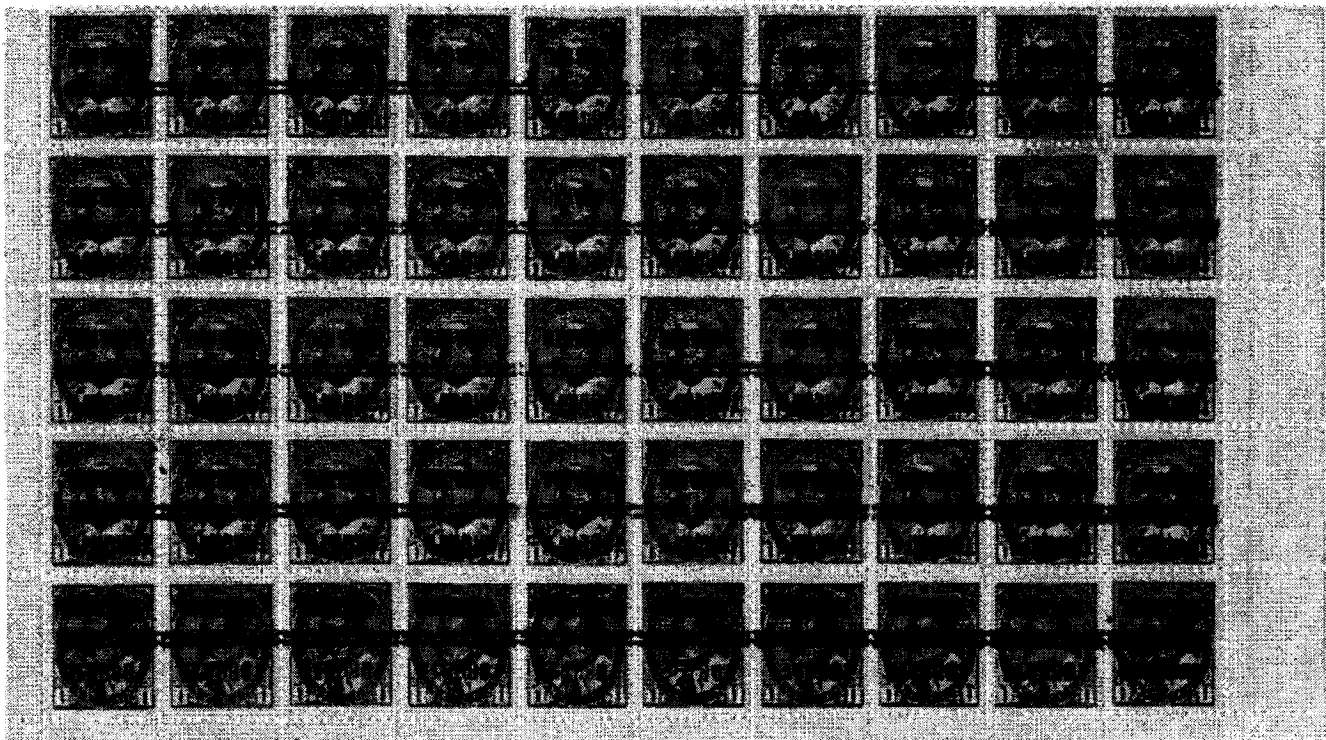
The Toronto block shows a wide variation of inking of the overprinting legend on the stamps, those in positions 55 and 56 on the full pane being lightly inked and showing no sign of fine scroll work. My explanation of this is that the

cleaning of the plate between printing runs has resulted in much greater wear in the centre of the plate than at its edges.

Comparing the two blocks, it can be seen that the width of the GV Scroll Issue stamps is greater than that of the Edwardian stamps. However the width of the overprinting

plate is the same in each case, thus giving the impression of a drift of the imprint legends on the GV stamps.

Close examination of both blocks shows that some of the letters in the legends are damaged and this will give rise to constant varieties, which could be catalogued.



## CURRENT RESEARCH PROJECTS by Larry Goldberg

In issue 3, we went to great lengths to publish a complete list of the current research projects and their coordinators.

In most issues since then, we have included a paragraph requesting that the coordinators keep the editor informed of their progress (see page 8 of this issue.

To date, I have heard nothing.

The only project that I know of that has been completed is the Bar-Type Identification Guide. I did that; it was no big deal because all of the information came from Hans Reiche and Andy Ellwood. I just put it together and had it printed.

I have to ask myself why this

study group exists, if no one is sharing the fruit of their studies with their fellow collectors.

Without ongoing research and disclosure of new information, what reason do we have for existing as a group? Or, one might even tale it one step further and ask, why bother collecting at all?

I have taken the liberty of publishing the list of projects and coordinators again. Do something with it ... please.

### PRICING STATISTICS

David Marasco  
13293 24th Avenue  
Surrey, BC V4A 2G4  
dmarasco@sentry.npsnet.com

### MAJOR USERS

Norm Wagner  
#1320, 720-13th Ave. SW  
Calgary, AB T2R 1M5

### LATHEWORK

Duncan MacDonald  
P.O. box 37013  
Lynwood Postal Outlet  
Edmonton, AB T5R 5Y2  
duncan@camacdonald.com

### ADMIRAL SHADES

Sean Michel  
1411-A Carling Avenue  
Suite 202  
Ottawa, ON K1Z 1A7  
scmprecapp@global.com

### PLATE BLOCKS

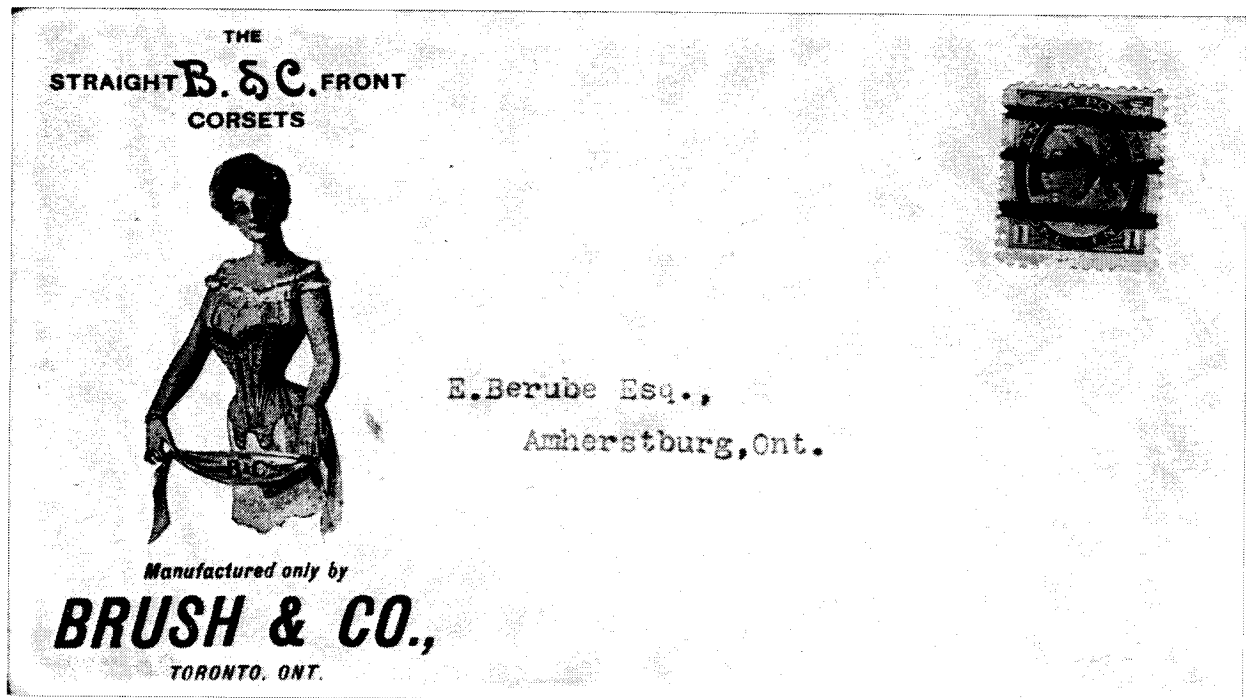
Adrian Ellis  
2 Old Brompton Road  
London SW7 3DQ  
ENGLAND  
adrian@rivieraconcepts.com

### VARIETIES

Andy Ellwood  
PO Box 83004  
Ottawa, Ontario K1V 1A3  
andy\_ellwood@msn.com

### RE-ENTRIES

Duncan MacDonald  
P.O. box 37013  
Lynwood Postal Outlet  
Edmonton, AB T5R 5Y2  
duncan@camacdonald.com



An interesting precancelled cover from the editor's collection advertising B&C (Brush & Company) Straight Front Corsets. Very attractive deep blue ink on yellow stock cancelled with Type T-75. Amherstburg destination cds dated NO 22 01 appears on the reverse side.

**WANT LISTS** *You can have your own want list published here ... absolutely FREE.*

**FOR SALE OR TRADE**

Hundreds of duplicates of precancelled stamps. Most are the less expensive to intermediate priced stamps. I will trade catalogue value for catalogue value or sell at 1/2 catalogue price. Dr. Wayne Walton 2116 Golden Oak Lane Madison, TN 37115

**TORONTO PRECANCELS ON COVER**

Larry Goldberg is seeking covers bearing Toronto precancels. What have you got for sale? Email editor@kg6.com or by snail mail at Box 7170, Buffalo Grove, IL 60089-7170

**PRECANCELS ON THE 3c SMALL QUEEN ISSUE.**

Ron Ribler, chairman of the LQ/SQ Study Group, is interested in buying precancels on the 3 cent SQ issue. He has the A, I, J, R, S, and T and is looking for the others. Send pics and prices to him at laudron@yahoo.com or PO Box 22911, Ft. Lauderdale, FL 33335.

**PRECANCEL LATHEWORK & ANY MAJOR**

**PRECANCELLED RE-ENTRIES**  
I am also interested in trading or purchasing for the more expensive \$100+ town type precancels I need. I can be reached by e-mail at duncan@

camacdonald .com or at Duncan MacDonald, P.O. Box 37013, Lynnwood Postal Outlet, Edmonton, Alberta T5R 5Y2, CANADA

**TOWN PRECANCELS ON KGVI REVISED & UNREVISED ISSUES**

Larry Goldberg is looking for town precancels (other than the more common ones) on the KGVI revised and un-revised issues. What have you got for sale? Email editor@kg6.com or by snail mail at Box 7170, Buffalo Grove, IL 60089-7170

**FREE WANT ADS!**

JUST SEND THE EDITOR COPY FOR YOUR AD.

**ATTN: RESEARCH PROJECT COORDINATORS**

Please keep the editor informed of the progress you are making on your research projects. By keeping the membership informed, you are setting up a useful pipe-line for further information.

Thanks for your help.

See page 7.

**ODDITIES** by Andy Ellwood

Amongst my collection, I have a number of stamps which I casually refer to as Oddities. In some cases, I have seen reference to them in the literature, but in others, I have never seen anything. Any information that anyone can supply would be most appreciated.



The first item is a "double" of two types of the established Winnipeg precancels. Invert-ed on a copy of # 92, the Town Name

is a type 2 with the bars below. The Province Name is a type 3, with the bars above. Between the two sets of bars are a set of short bars which could be from the tops of the letters "FOR" from the type 2, but, even incomplete as they are, it is obvious that these additional partial bars do not match these letters, nor are they compatible with either type 2 or 3.

So we have a mystery. Perhaps, the printer was interrupted while resetting the type for a run and failed to complete the set-up properly. While I am sure that I have seen an illustration of this Oddity somewhere, I cannot remember where.

The second item is a horizontal pair of #41 with a light purple "BROWN'S NURSERIES," between two



solid bars. The bars are 2 mm wide and are 2 mm above and below the name. Possibly this is merely a cancel, but if so, it is an unusual style. It also somewhat resembles the HUNTINGDON Overprint (Precancel Handbook page 85), but is a much earlier issue. The presence of the "," at the end of the name would presume that the province name followed on the next stamp. Thus, the "cancel" would have covered

a strip of three which would be an unusual way to apply precancels.

So I am disposed to assume that this is some form of "cancel", but not a "precancel". What do you think?