

# PRECANCELS/CANADA

WHOLE NUMBER 1 • SPRING, 2000

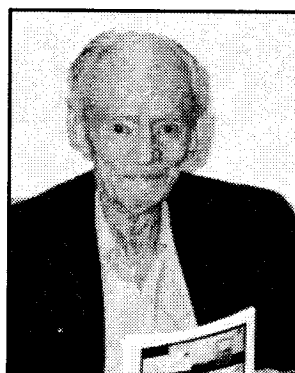
## GEOFF WALBURN 1902-1999

Henry Geoffrey Walburn was born in Bramhall, Cheshire, England on September 21, 1902. He died in Kelowna, British Columbia on September 4, 1999, at age 96. Geoff was predeceased by his wife Bernice (nee Delaney) in 1995.

During Geoff's lifetime, he sold real estate, worked on farms, owned and operated a large apple orchard, and, prior to his retirement, owned and operated a summer resort named Pixie Beach which overlooks Okanagan Lake just north of the Okanagan Centre post office. During much of the above, he was ably assisted by his wife Bernice.

Geoff was an accomplished bridge player and belonged to many clubs over the years. An avid reader, he was constantly busy at a number of philatelically-oriented projects. A generous man, he gave freely to a variety of philanthropic causes.

As a precancel collector of Canadian stamps, Geoff had few peers. For nearly forty years, he owned and edited the *Standard Canadian Precancel Catalogue* and the current edition still bears his name. His collection of precancels was one of the most complete ever assembled and he left a photographic record in colour of it for reference



purposes to be used and enjoyed by advanced and novice collectors throughout the stamp collecting community.

Geoff was a founding member of the Okanagan Mainline Philatelic Association which recently celebrated its 40th anniversary. He belonged to numerous stamp fraternities which included BNAPS, CPS of GB, RPSC, PHS of Canada, and the PSS of the USA. He was an Honorary Member of the OMPA, a Fellow of the RPSC and recently received a citation for over 50 years of membership in the PSS (USA).

Geoff Walburn will be missed by his many friends, especially those in the United Kingdom, United States and Canada, for his sincere and friendly approach to the people and life around him. His advice and counsel will long be remembered. **R.I.P.**

*"No man is an island, entire of itself; every man is a piece of the continent, a part of the main; if a clod be washed away by the sea, Europe is the less, as well as if a promontory were, as well as if a manor of thy friends or of thine own were; any man's death diminishes me, because I am involved in mankind, and therefore never send to know for whom the bell tolls, it tolls for thee."*

John Donne  
Devotions XVII

## PRECANCELLED ADMIRAL SHADES

by Hans Reiche

The question that was raised by A. Ellwood about the lack of data of the Admiral shades that were precancelled originated from this writer. Admirals are full of shades and partially listed in the Unitrade catalogue.

For example the 4 cents exists in olive bistre, olive yellow, golden yellow and yellow ochre. The golden yellow is the best and often undervalued.

The 5 cents exists in dark blue, grey blue and indigo. The 5 cents violet shades are not as pronounced.

The 7 cents has some very nice shades such as the straw, sage green, greenish yellow and olive bistre.

The 10 Cents comes in brown purple, reddish purple and grey purple (the first printing).

Then comes the 20 cents with its olive shade, sage green (most of the time misidentified), dark olive, and grey green.

Now, with regard to precancels, what Admiral shades do exist? One could assume that all the shades exist but this is not true. The reason is simple.

The majority of cities precancelled had just a single printing, enough to meet the demand. Small places such as Carleton Place, Kitchener, Niagara Falls, and others required only small quantities; a single order was enough. This is evident from the prices of such stamps that are usually high. The Niagara Falls

*continued on page 6*



IN THIS ISSUE

Precancelled Admiral  
 Shades ..... 1  
 Secretary/Treasurer's  
 Report ..... 2  
 Letter from the Editor .... 3  
 Webmaster ..... 3  
 Meet Your Officers ..... 4

\*\*\*

PRECANCELS/CANADA is published quarterly by the BNAPS Precancel Study Group

\*\*\*

OFFICERS

Chairperson:

Andy Ellwood  
 PO Box 41061  
 Elmvale Post Office  
 Ottawa, Ontario K1G 5K9  
 CANADA

Phone: (613) 737-2137  
 E-mail: andy\_ellwood@msn.com

Membership Secretary/  
 Treasurer:

Dr. Wayne Walton  
 589 Thomas Jefferson Circle  
 Madison, TN 37115-2165  
 E-mail: Waltonwl@aol.com

Webmaster:

Duncan MacDonald  
 15407 75th Avenue  
 Edmonton, Alberta T5R 2Y9  
 CANADA

Phone: (780) 487-8943  
 E-mail: duncan@camacdonald.com

Editor:

Larry Goldberg  
 PO Box 7170  
 Buffalo Grove, IL 60089-7170  
 USA

Phone: (847) 808-9575  
 Fax: (847) 808-9588  
 E-mail: editor@kg6.com

PROGRESS REPORT ON THE STUDY GROUP

by Andy Ellwood, Chairman

The Study Group is alive and well and is starting to take shape. Much has been accomplished, thanks to the efforts of **Larry Goldberg** (Editor) and **Duncan MacDonald** (Webmaster). **Dr. Wayne Walton** has agreed to take on the role of Membership Secretary-Treasurer. His address can be found elsewhere in the Newsletter.

COMMUNICATIONS

Much debate has been held over the role of the newsletter versus the website in providing the members with a communications capability. While the website provides rapid communications, it does not reach all members and you can't read it in bed or elsewhere. So we have decided to have both a newsletter and a website and the following guidelines will be followed by the Executive.

- All members should have access to information to information developed by the SG before it is made available to other BNAPS members or the general public.
- Whenever practical, members without web access will receive web-published material through the newsletter or by a special web printout. The webmaster and editor will coordinate the mailing of these printouts.
- Information flow will not be restrained because some members do not have web access. The website is divided into sections for the Public and for Members Only, with the latter accessible only by password. SG articles written for the newsletter will be posted to the Public section approximately two months after the newsletter is published. If the author wishes, the article may be restricted in whole or in part



Andy Ellwood

to the newsletter or the Members Only.

- Scans of precancels will only be attributed to the owner with permission.

The SG Executive does not pretend to have all the answers on how to handle the use of a website in a study group and will raise the matter for discussion at our study group session at Chicago.

RESEARCH

Research activities have started under the guidance of several coordinators. I hope that every member will find something here that is of specific interest and that the coordinators will be overwhelmed with offers to help. Addresses are on the website. If you don't have access, please contact me at 613-737-2137.

- **David Marasco** has undertaken to support **Jim Kraemer** and **Hans Reiche** in their ongoing efforts to keep the **Standard Canada Precancel Catalogue** current. He will be gathering data on quantities and prices and needs to have every member supply him with data about their collection or holdings.
- **Norm Wagner** is gathering stories about **major users**. He is intrigued by stories and anecdotes about the

companies that used precancels, especially those located in small towns.

- **Duncan MacDonald** has a strong interest in **lathework** and would be interested in gathering any information about what you have in your collection in this regard. See his article on the website.

- **Michel Jean** has agreed to examine the subject of **Admiral shades**. While the Admiral shades are well-documented, there is little written about them from a Precancel perspective.

We have made a good start on these areas of research, but there are many other areas which are begging to be explored. One which is frequently mentioned is the identification of Bar Types. There is some question about whether the existing types are, in fact, unique. While there is some hesitancy about the impact of combining types, it is an area that really could use some research.

**Duncan MacDonald** is trying to prepare a color chart which will more realistically define the different types and this may be the kickoff needed for someone to start a good research activity. **Is anyone interested?**

Enough for now from me. I trust that this first Newsletter will trigger more involvement by members and that Larry will see several articles arrive for the next newsletter. In the meantime, Happy Hunting.

# LATHEWORK INVENTORY

by Duncan MacDonald

One of the aims of the precancel study group is to compile a detailed listing of precancelled lathework.

The Canada Precancel Handbook lists the following lathework<sup>1</sup>: 1 cent green with lathework Type B, 1 cent yellow with lathework Type D, 2 cent carmine with lathework Type B, and 2 cent green with lathework Type D.

Listed below are lathework pieces of which I have knowledge. I would appreciate hearing from anyone who has precancelled lathework, even if it is listed below.

Most of these pieces can be viewed on the precancel web site. A scan of any additional pieces would be appreciated so I can add it to the web site.

**Scott #104 1¢ green with lathework Type B:**

- Brandon 1-104
- Brockville 3-104-D (block)
- Carlton Place 1-104
- Estevan 1-104-I (corner block)
- Hamilton 3-104 yellow green with "extended Guideline" from top line of lathework
- Kitchener 1-104-I
- St Johns 3-104
- Vancouver 2-104
- Windsor 3-104
- Woodstock 1-104
- Woodstock 1-104-I

**Scott #104 1¢ green with lathework Type C:**

- Brockville 3-104-D
- Kitchener 1-104
- London 1-104
- Regina 2-104
- Saskatoon 1-104-I
- Toronto 7-104
- Toronto 10-104
- Scott #105 1 cent yellow with lathework Type C:
- Kitchener 1-105 1 cent yellow Type C

**Scott #105 1¢ yellow with lathework Type D:**

- Brantford 1-105 (pair)
- Brantford 1-105 (block)
- Brantford 3-105
- Kitchener 1-105 (dry



- printing die 1)
- Kitchener 1-105-D (bl4 wet printing die 1)
- Peterboro 1-105, Toronto 10-105 (corner block of 4, bottom pair without precancel)
- Toronto 11-105 (corner bl4)
- Toronto 11-105 (bl4)
- Toronto 12-105 (corner bl4 left pair without precancel)
- Toronto 12-105-D (block)
- Winnipeg 1-105.

**Scott #105 1¢ yellow with lathework Type D Inverted:**

- Bridgburg 1-105-E
- Kitchener 1-105
- Toronto 11-105
- Victoria 1-105

**Scott #106 2¢ carmine with lathework Type B:**

- Saskatoon 1-106-D
- Victoria 1-106-I

**Scott #107 2¢ green with lathework Type C:**

- Kitchener 1-107

**Scott #107 2¢ green with lathework Type D:**

- Brantford 1-107
- Brockville 3-104-D (block of 4)
- Kitchener 1-107-I
- Peterboro 1-107 (strip of 3)
- Peterboro 1-107 (LR corner pair)
- Vancouver 2-107-I

**Scott #108 2¢ brown with lathework Type D:**

- Kitchener 1-108
- Kitchener 1-108-I
- Niagara Falls 3-108
- Welland 1-108
- Welland 1-108-I

**Scott #109 2¢ carmine with lathework Type D:**

- Niagara Falls 3-109
- North Battleford 1-109-I
- Quebec 3-109
- Quebec 3-109-I
- Regina 2-109
- St John 3-109
- Toronto 12-109 (block)
- Toronto 12-109
- Weston 1-109

- Victoria 1-109
- Winnipeg 6-109.

**Scott #110 4¢ olive bistre with lathework Type D:**

- Calgary 1-110
- Halifax 2-110
- London 1-110
- Niagara Falls 3-110
- Niagara Falls 3-110 I

**Scott #112 5¢ violet with lathework Type D:**

- Toronto 12-112 mint LL horizontal block of 16 with lathework type D. The right hand block has been reattached. As a result of the diagonal precancel the lower left stamp has no trace of the precancel)

- Kitchener 1-112 (block)
- Montreal 6-112 (block)

- Niagara Falls 3-112

**Scott #113 7¢ Olive Bistre with lathework Type B:**

- Niagara Falls 3-113
- Regina 2-113-I

**Scott #114 7¢ red brown with lathework Type D:**

- Hamilton 1-114-I (2 copies)

**Scott #116 10¢ plum with lathework Type C:**

- Ottawa 1-116

**Scott #117 10¢ Blue with lathework Type D:**

- Edmonton 3-117-I
- Halifax 2-117
- Niagara Falls 3-117
- Niagara Falls 3-117-I

**Scott #118 10¢ Bistre Brown with lathework Type D**

- (this is the rarest of the admiral lathework with two singles, Toronto style 10, and two blocks, one Toronto style 11 and the other thought to be Toronto style 10, recorded):
- Toronto 10-118

**Scott #119 20¢ olive green with lathework Type D:**

- Niagara Falls 3-119
- Toronto 11-105
- Toronto 12-119
- Vancouver 2-119.

Revenue FWT 8-Inverted precancel block with type D lathework

1. Precancel Committee. *The Canada Precancel Handbook*. Toronto: Unitrade Press, 1988. p.134.

## A WORD FROM YOUR EDITOR

by Larry Goldberg

This is the first 'real' newsletter published by our SG, and, as promised, it devotes a lot more space to precancels than the machinations and logistics of the group.

While the issue devotes a disproportionate amount of space to Admirals and the lathework thereon, this was not by plan. It is hoped that future issues will provide a broader range of information.

**Thanks.** We are grateful to **Hans Reiche** for providing us with a number of interesting articles. We also wish to thank **Duncan MacDonald** for his submissions as well his general support and assistance in getting this issue to press. Last, but not least, thanks to the SG Chairperson, **Andy Ellwood**, for his splendid article and analysis of the beautiful Brantford precancelled sheet. (I'm not the jealous sort, but I am willing to make an exception in this case).

**Ready to be a writer?** As an editor for a number of publications, I realize that there are many of you who have valuable information, but are reluctant to write an article or question your ability to do so. If you will drop me a note or email with the pertinent facts, I would be happy to 'ghost write' it for you, send it to you for approval and include it in the newsletter with your byline. The fact that I cleaned it up would be our secret.

Let me repeat what I said in our Special Edition: **"None of us is as good as all of us."**

Blessings.

Visit the Precancel Study Group Web Site at <http://www.camacdonald.com/precancels>

## ANALYSIS OF AN ADMIRAL PRECANCEL SHEET: BRANTFORD # 3 - 105

by Andy Ellwood

I was fortunate recently in purchasing a full sheet of Brantford # 3-105, lower left pane. The stamp is catalogued as # 105 vi, Die I, dry printing from plate 186 or 187 and was printed at the end of 1924. It has full Type D lathework with 100% impression.

**Query: Why does Marler state that these plates were printed without lathework?** (See Marler)<sup>1</sup>

In addition to being attracted by the full sheet, I was also intrigued by the obvious variations in spacing between the lines of precancels. As a result, I got out my magnifying glass and went to work recording the following details.

### Vertical Centering

The precancels were printed from a plate of 10 horizontal lines of 10 precancels. Each line is 200 mm wide with the 10 precancels being spaced equally distributed. Since the row of 10 stamps is 209 mm wide, it is obvious that each precancel will have a different position relative to the design of the stamp being precancelled.

In fact, only precancels in columns 6 and 7 are positioned inside the design. All other columns have the cancel outside the design and about 50% are outside the perforations. This is a fine illustration of why so many precancels are not centered on the stamp. For many collectors, uncentered cancels are less desirable and on this sheet, only 10% of the stamps could be classed

as having VF centering. Is this a factor in determining value?

### Horizontal Positioning

The precancels in rows 2,3,5,6,7,8, and 9 are parallel with the design across all 10 stamps and are 2.0 mm below the top of the design. In rows 1 and 4, the precancels are 2.0 mm below the top of the design on the left stamp and gradually rise to 1.5 mm on the right. In row 10, the precancels rise from 2.5 mm below the top of the design on the left stamp to 1.0 mm on the right, leaving an image of a curved row of precancels.

### Varieties

Of the 100 stamps, 13 were found to have varieties in the cancels. In the following list, reference to "Listed Types" is from the 2000 *Standard Canada Precancel Catalogue*<sup>2</sup>.

- ① Position 8 - Unlisted - upper left corner of B missing
- ② Position 18 - Listed - Type C1 - top of 'NTF' missing
- ③ Position 30 - Listed - Type B2 - bars stop short at right
- ④ Position 51 - Unlisted - break in upper bar, left end
- ⑤ Position 68 - Listed - Type C2 - top of 'OR' missing
- ⑥ Position 69 - Nailhead - faint - right of city name
- ⑦ Position 81 - Unlisted - break in upper bar, left end
- ⑧ Position 83 - Unlisted - period after ONT - left half missing
- ⑨ Position 84 - Nailhead - right of ONT - shows screw slot

⑩ Position 90 - Unlisted - Most of right side of bars missing due to faint nailhead - similar to Type B2

⑪ Position 91 - Listed - Type B1 - break in bottom bar

⑫ Position 92 - Unlisted - period after ONT is completely missing

⑬ Position 100 - Nailheads - one at right end of lower bar - one to right of 'ONT'

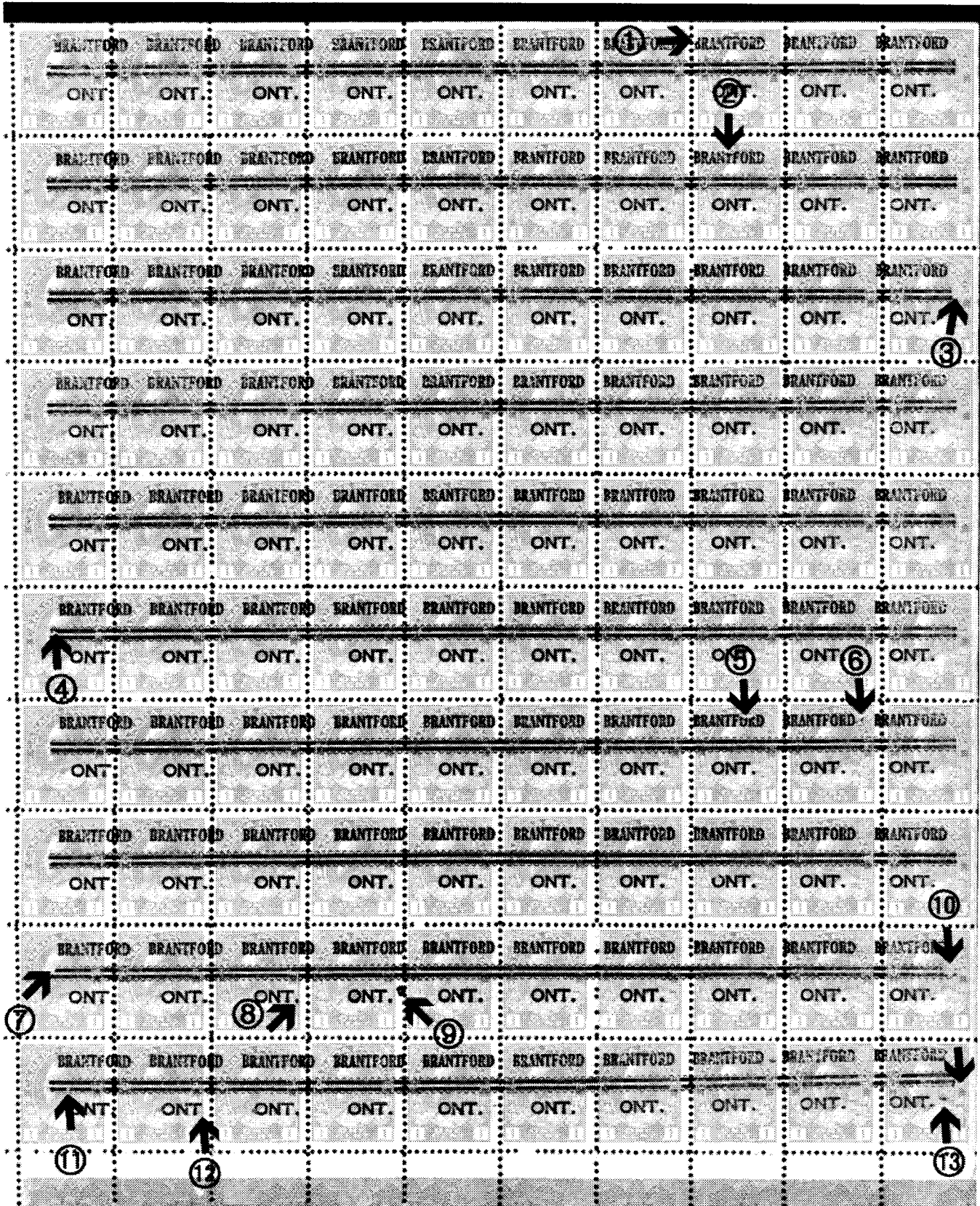
### Conclusions

It appears logical that the row of precancels were printed from separate strips, each of which was separately secured to the overall plate. It may also be that when the retaining screws became loose and sometimes create a 'nailhead', the strip shifted. This is most obvious in the bottom row where the shift is quite noticeable on the left end.

1. Marler GC. *The Admiral Issue of Canada*. State College, Pa.: APS, 1982. p. 202.

2. Kraemer JE, Reiche H, Walburn HG., Ed. *The Standard Canada Precancel Catalogue 2000*. Toronto: Unitrade Press, 2000. pp.62-3.

**NOTE:** The facing page shows a slightly reduced image of the sheet Andy is discussing here. The numbers shown on the sheet reference the numbers indicated in the article. Hopefully the finished printed piece will be of high enough resolution that you can see the actual flaw. Ed.



Visit the Precancel Study Group Web Site at <http://www.camacdonald.com/precancels>

## SHADES

*continued from page 1*

7 cents (3-113) was printed in a quantity of 30,000,

Therefore, no shades of this stamp exist.

For all practical purposes, we can forget shades of all the smaller cities. It is different with the larger cities, like Toronto or Montreal, where more than one plate was used for the overprint and large quantities were printed.

Montreal and Toronto alone received more than 4,000,000 of the 10 cents plum. It is obvious that, based on the tremendous quantity printed, various shades do exist.

There are still some shades that have yet to turn up for these cities, such as the 4 cents golden yellow, the 10 cents grey purple first printing and the 7 cents sage green.

Looking at the Admiral Plates that were used for precancels, it is evident that just very few plates, often only a single plate, were used for some values. This again shows that one can not expect very much shade varieties.

**Query: Who would be interested in following this up?**

## THE TEN CENTS BISTRE BROWN PRECANCEL

by Hans Reiche

The 10 Cents was issued 1 August 1925. The value was issued in two distinctive shades, Unitrade 118 bistre brown and 118i in yellow brown. The first two plates, plates 21 and 22 were printed in yellow brown and the other three plates in bistre brown.

The quantity that was precanceled has been suggested as 1,000,000, the same as for the 10 Cents blue. The small quantities for both were the result of large quantities of the 10 Cents plum that were printed and remained in circulation for a long time. As a matter of fact the plum value can be found with additional cancels that date beyond 1926.

*The Canada Precancel Handbook*, page 135, shows a table that indicates the shades that have been recorded for each city. The table, which may not be complete, shows that the late styles of precancels were only from the later plates and therefore in bistre brown and not in yellow brown. Examples include:

- Edmonton, Style 3
- Hamilton, Style 4
- London, Style 3
- Montreal, Style 6
- Quebec, Style 3
- St. John, Style 3
- Toronto, Style 12

It is interesting that the later printings practically do not exist in inverted form, but almost all the first printings do. There has been some speculation that these inverts were specially made for philatelic purposes, as the Philatelic Agency in Ottawa sold both normal and inverted.

Any new reports would be welcome.

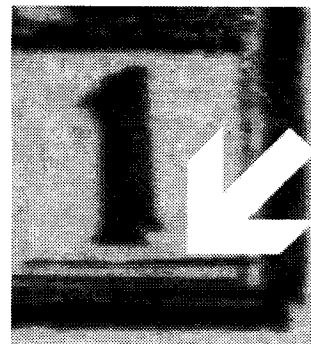


## QUEBEC MAJOR RE-ENTRY

by Duncan MacDonald

Congratulations to Bruce Fields who won a gold medal and received the award for best BNA exhibit for his precancel exhibit at the Edmonton Stamp show.

Bruce recently joined the precancel study group and when I asked him how he acquired the Quebec major re-entry he related the following story. He was preparing his collection for exhibit at the Edmonton stamp show and read the article in the handbook on the Toronto major re-entry. He decided to



CLOSE UP OF RE-ENTRY

check his collection and could hardly believe his eyes when he found the major re-entry on his own copy of Quebec 1-104-I.

Visit the Precancel Study Group Web Site at <http://www.camacdonald.com/precancels>

## THE DOUBLE TOWNS

by Duncan MacDonald

The four known combinations of double towns are among the rarest of Canadian precancels and Harry Lussey provides the best explanation of how they occurred:

"These combos came about in a perfectly logical manner. When Postal authorities had requests for precanceled stamps they would turn over to the printers the exact number of sheets to be precancelled and would specify how many sheets were to be prepared for each town. The sheets were, of course, gummed and perforated which makes them rather difficult to handle. If there was an order for twenty sheets of a certain town name and the printers ran off twentyone by mistake he could not throw away the overrun, it had to be used to complete the order and returned to the Postal

Authorities. There was only one thing to do and that was to put the sheet back on the press for a strike of a different town and use it for that order"

All four of the double towns from the Lussey collection have Vinnie Greene certificates and can be viewed on the precancel website.

One of the lots I purchased, lot 2116, at Robert Lee's Auction #93 in March of last year was the Windsor-London double town combination from Harry Lussey's collection. Included with the lot was a letter from Harry to Geoff (part of which is reproduced here).

Jan 10, 1985

Dear Geoff,

*It was a very pleasant surprise to receive your letter enclosing a copy of the 1¢ Edward with the double Windsor & London precancel. Thank you ever so much and*

*I am enclosing my check for \$75.00 U.S. which, I am sure, will work out to somewhat more than \$90.00 Canadian.....*

The price I paid was about \$2,500.

And who says precancelled

stamp prices haven't increased in value?



## PRECANCEL BAR IDENTIFICATION

by Hans Reiche

The difficulties of the identification of the bar styles remain. For many years various methods have been used in the catalogues to clarify this. But the problem remains.

The reason for this is simple. Most of the bar styles were produced by more than one cancelling device. Every time a new device was manufactured the characteristics changed slightly. Therefore, over the years during which many styles were used, changes occurred.

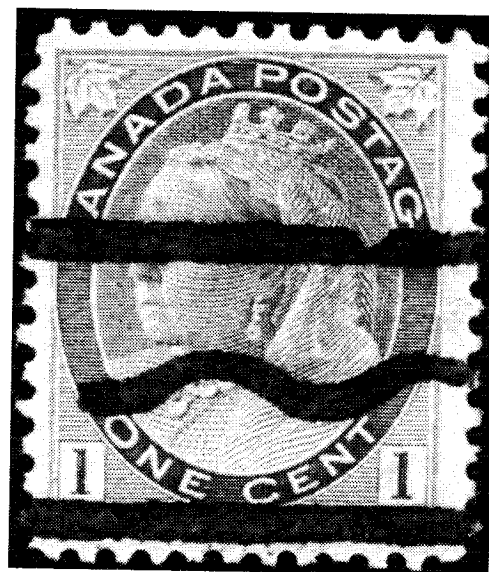
As a matter of fact, Walburn himself never agreed to all the styles that are now listed. He believed that some of the early styles are all the same but with slight variations due to changed cancelling devices of a particular style. He suggested that Styles B, C and

D all belong to the same style. Also he suggested that Styles F, G and H should be combined.

In addition, it is obvious that Styles R, S and T come in various types. The number of waves that belong to each style varies over the usage period. For example, Style T comes with two, three or even four waves but the same height.

Unfortunately, Style U has been forged in large quantities. The key to this style is the slightly different length of flat portions on one or the other side. All genuine Style U precancels should have two different dimensions, namely one flat part 6.75 to 7.5 mm and the other part 8.0 to 8.5 mm long.

Recent auction catalogues have listed some double bar cancels, but a careful look at most of them indicates that



TYPE T-67 ... MAYBE.

these are not double but just heavily overinked or slightly offset printings that appear to be double. Any comments to improve the listing of bars in

the next catalogue would be appreciated.

## SECRETARY/TREASURER'S REPORT

by **Duncan MacDonald**

I have passed on the duties of Secretary/Treasurer to Wayne Walton and will be concentrating on trying to keep the web site up to date. I wish Wayne every success and am sure he will be a valuable member of the executive.

We presently have 24 members and interest has been shown by several other people. The re-entry study group has included information on our group in their newsletter and

the LQ/SQ study group will do the same in a future newsletter.

Copies of our introductory newsletter were sent to purchasers of precancel lots at the recent Robert A. Lee auction. I will hand out copies of the newsletter at the Canadian Philatelic Society of Great Britain meeting at Hove in May and John Jamieson of Saskatoon Stamp Centre has agreed to let me leave copies at his booth during the London show.

## WEB REPORT

by **Duncan MacDonald**

The web site is gradually getting built and by the time you receive this newsletter I should have the Lathework Inventory uploaded, complete with scans of most of the pieces. There is now a bulletin board on the web site for any member to post questions or a buy/sell list. Project Coordinators are being appointed and more information on the various projects being started will be listed as it becomes available.

Any member who wishes to become involved in a project or wants to start one is encouraged to email me and I will pass the message on. If there is a project coordinator listed email them and volunteer.

People like Hans Reiche have published many articles on precancels and are to be congratulated for increasing our knowledge. However there is a lack of knowledge in many

areas of precancel collecting and a great deal of work remains to be done.

The passing of Geoff Walburn and Dave Izzett means valuable sources of information are no longer available. I understand that Harry Lussey is now bedridden and can't talk, so another major source is no longer available. It is crucial that we start to gather information as soon as possible.

I will be mounting a list of precancels that I would like to receive a scan of on the bulletin board and would appreciate members help in this area.

I would also appreciate receiving any information members have on upcoming auction lots.

Please e-mail any suggestions for things you would like posted on the site or any corrections on information posted.

## MEET YOUR OFFICERS - PART II

As Andy mentioned in his message on page 2, Duncan MacDonald has turned over the Membership Secretary/Treasurer's job to Wayne Walton. Duncan will retain his position as Webmaster and will be devoting his time to building the study group's presence on the Internet.

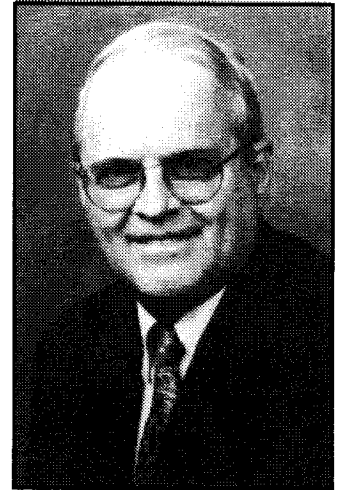
Herewith a brief bio on Wayne to add to those that appeared in our Special Edition.

**WAYNE WALTON**  
Membership Secretary/  
Treasurer

Wayne (Doc) Walton has lived all over the United States having worked for NASA on the Lunar samples and teaching at various universities. Trained as a mineralogist (Ph.D. Ohio State University), he has worked on the chemical systems of high temperature ceramic bodies as well as meteorites.

The last 17 years he served as a missionary (Southern Baptist) in Burkina Faso, West Africa where he taught at the university and worked with students. Due to a medical problem, contracted while in Africa, he was forced to take disability in May of 1998.

He became interested in precancels due to the tutelage of Geoff Walburn. Mr. Walburn sold him his first precancel. Over the years, until his service overseas, he pursued the hobby and built a basic to



**WAYNE WALTON**  
Membership Secretary/  
Treasurer

moderate collection of precancels. After the 17 year hiatus, he has once again started working on his collection. His collecting interests include Canadian precancels, square circle cancels and Hawaii philately. He is a life member of BNAPS (L2431) and a member of the Hawaiian Philatelic Society. He has served as a lot writer for various auction houses as well as serving as an authority on British Colonies and Hawaii. He is presently affiliated with the American Coin and Stamp Exchange, Madison, TN.

He can be reached by email at [waltonwl@aol.com](mailto:waltonwl@aol.com) and by mail at 589 Thomas Jefferson Circle, Madison, TN 37115-2165.

Visit the Precancel Study  
Group Web Site at  
<http://www.camacdonald.com/precancels>