

# THE BNA PERFORATOR

Published by The British North America Philatelic Society - The BNA Perpins Study Group

Volume 23, Number 6

Whole # 120

November - December, 2002

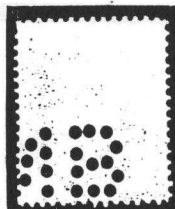
Welcome to the sixth and last Perforator for this year. We were a bit ambitious when we started the year and said that 6 issues would be reasonable. In hindsight it wasn't unrealistic but it has helped bring one point to the forefront, we do not have enough contributions to continue to publish 6 issues per year. Therefore we have decided to go with quarterly publications next year if we can get the required material. As of now I have no more material to publish so four issues may not even be realistic next year. We'll have to wait and see.

Our Treasurer informs me that our bank account is healthy and we are not recommending a dues increase for 2003. This will serve as a reminder for those who have not yet paid to get your dues in to Steve for the coming year. Rates are \$5 CAD for Canadian addresses, \$5 US for United States addresses and \$10 CAD for all others. These are very low when compared to some of the other study groups. Please make an effort to send your dues as soon as possible.

An email from the editors of the Standard Canada Precancel Catalogue and Handbook indicates they are doing a survey prior to revising the Precancel Perfin section. Perfin collectors who have precancel perfins are invited to report what they have based on the issue and position. Positions are the accepted positions one through eight as illustrated in the Canadian Perfins handbook. Collectors may contact James E. Kraemer, 17 Commanche Drive, Ottawa, ON, K2E 6E8 for additional information His e-mail address is [jkraemer@magma.ca](mailto:jkraemer@magma.ca). Collectors who have a substantial number of perfin precancels may wish to ask Mr. Kraemer for a 14 page preliminary survey.

This issue contains a short article and some photocopies of some interesting C38 material as sent in by Mark Fennell. There are some exhibit quality items here which I'm sure will be appreciated as extremely scarce. Thanks Mark.

Jon Johnson has sent a copy of a Newfoundland stamp, Scott # 105 with a partial revenue cancel and the perfin as shown. The holes are very large and appear to be similar in size to some of the "PAID" punches seen on cheques over the years. Could this have been applied to a cheque, as was required by the Nfld government, and then punch cancelled at some foreign bank? Your comments would be appreciated.



Chairman/ Ed  
Barry Senior  
Box 1676  
Clareville, NF  
A0E-1J0

Sec/ Treasurer  
Steve Koning  
1401 Hwy 62  
Bloomfield, ON  
K0K-1G0

Publisher  
Mark Fennell  
816-3<sup>rd</sup> Ave. N.  
Saskatoon, SK  
S7K-2K2

Auctioneer  
Conrad Tremblay  
1563 Rue Papin  
L'Assomption, QC  
J5W-5H9

More on the C38 perfin

Mark Fennell

The following is further to the article by Russel Sampson in Perforator #118.

CMS was the only Canadian Company known to perforate Postage Due Stamps, but they only perforated J15, J16, J17, J18 and J20 in the dark violet shade and J15i, J16i, J17i, J18ii and J20i in the red violet shade.

It is not known at what date they discontinued perforating Postage Due Stamps, but they were apparently so accustomed to this practise that they used ordinary postage stamps to pay 2¢ postage due on this letter. Under the 1¢ stamps is a red handstamp with , one method used by the Post Office to indicate 2¢ postage due.

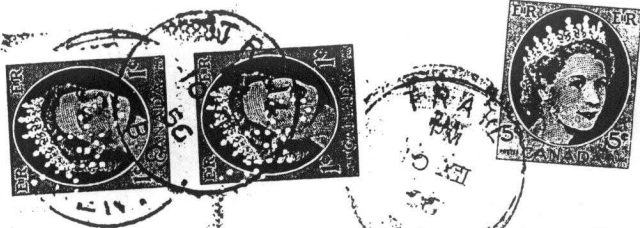


**Airline-U-Drive Co.**

LIMITED

P.O. BOX 24

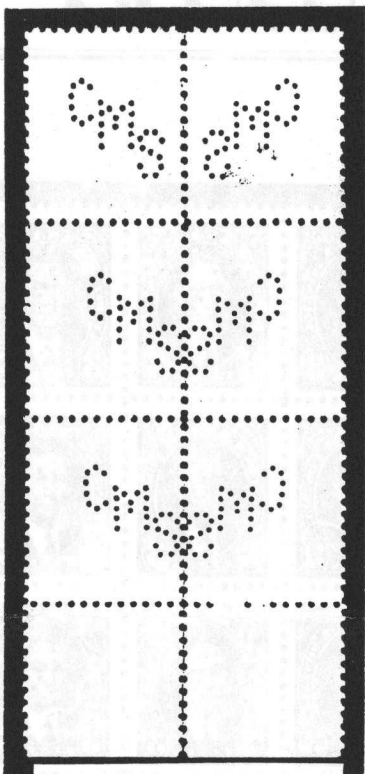
TRAIL, B.C.



The Consolidated Mining & Smelting Co.

TRAIL, B.C.

Other interesting C38 Postage Due Perfin



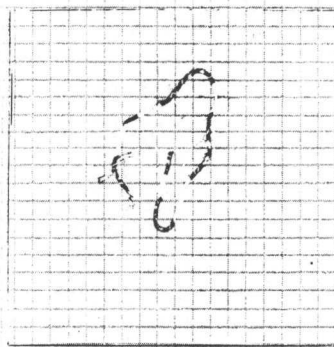
FRONT  
With reverse  
partial plate  
inscription in  
bottom selvedge

BACK  
Mirror block 1¢

Complete plate inscription  
upper selvedge.



Block of 16 cancelled 4¢ with partial cutting guide arrow just visible at the bottom right selvedge. Possibly the only such block in existence.



A thread was on the surface of the sheet when printing the stamp impression, with the result that parts of 5 stamps are not printed beneath the location of the thread. The thread was obviously dislodged when CMS applied their perforator to the stamps. A part of the thread is still on 2 stamps and the other parts are in the envelope below the block.