



"POST CARD MATTERS"

VOLUME 1, NO. 4

SEPTEMBER 2000

"BOOMTOWN"--BY STEVEN LUCIUK

At first glance this shanty town may seem a rather curious subject for a postcard [see FIG.A at the end of this issue. Ed.] On reflection, the image was a fortunate choice because it helped to record one of many minor aspects associated with the Second World War. Too often these peripheral stories were overlooked and later forgotten.

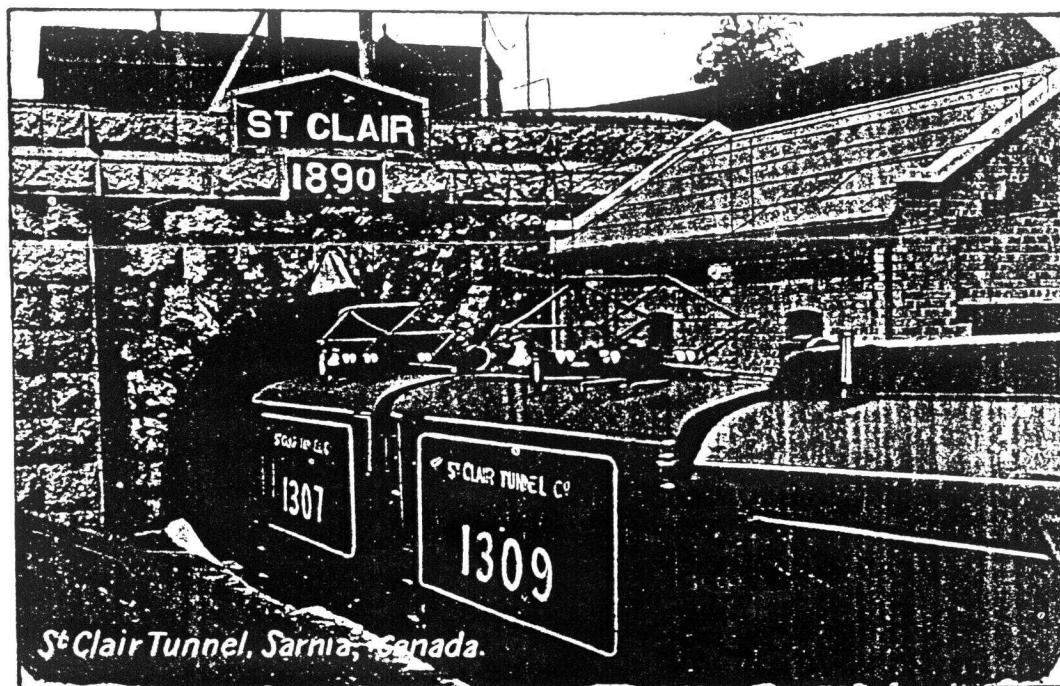
Prior to the start of the conflict in 1939, strategists recognized that the air war would be crucial. Canada became the location for the British Commonwealth Air Training Plan (BCATP), a vast programme designed to train air crews and other personnel needed for modern warfare. Canada's role in "The Plan" represented a significant contribution to Allied success. One avenue of air crew training was bombing and gunnery. The nature of this type of training required sparsely populated areas, preferably with one or more large lakes. No.5 Bombing and Gunnery School was established near Lampard, a few miles north of Dafoe, Saskatchewan. The nearby Quill Lakes allowed ideal training conditions.

No.5 B & G School was located about 140 kilometres east of Saskatoon. Its remoteness meant that an acute shortage of housing, particularly for support and maintenance staff, soon developed. An unofficial village of close to two hundred buildings mushroomed up at the edge of the base. It consisted of substandard dwellings hastily constructed or moved into the shanty town. Many of the structures were tar paper shacks. Others were granaries brought in from nearby farms. Not unexpectedly, the village soon came to be known as "Boomtown".

This AZO (squares in corners/ca. 1927-1940's) photo postcard shows much of Boomtown's "business section". The larger, light-coloured building was the drug store; a popular hangout. At least one other postcard of this temporary community was produced. The writer has an AZO card showing a view of only the drug store.

SARNIA'S ST. CLAIR TUNNEL--BY J.C. CAMPBELL

The two locomotives shown on this 1910 used Pugh Manufacturing Co., Toronto postcard, #1307 and #1309, were re-numbered in 1910 to #2657 and #2659 respectively. Locomotive #1309 made the first trip through the tunnel, accompanied by #1308, on February 20, 1908 after the electrification of the line.



It was September 19, 1891 when the tunnel was first opened and the first engines were steam-operated. The tunnel joined Sarnia on the Canadian side to Port Huron on the American side. The length of the tunnel (portal to portal) was 6,025 feet and the cost was \$2,700,000. The cost of electrification was \$500,000.

Reference: St. Clair Tunnel, Clare Gilbert, Parkhill, Ontario (1991), on the centenary of the completion of the tunnel.

DEAR MEMBERS:

Now that September has arrived Colin and I hope that everyone had a nice summer and thoughts are now turning from the lazy days of summer to the more serious (!) collecting season ahead!! Fall and winter shows will once again present the opportunity to find that treasure or two. We will try an experiment with this issue and illustrate some of the cards herein on the final page. It is hoped that this method may capture some of the detail lost with ordinary photocopying. It's expensive but worth a try to see how members wish to proceed. Please let Colin or I know if this is something we should have for every issue (but be forewarned, membership fees may have to increase next year!). We cannot do this for all of the cards but if possible, members are encouraged to send in clear colour copies or scans of card submissions. Enjoy!

CHAIR/TREAS.: J.C. CAMPBELL, #303-1260 RAYMER AVE., KELOWNA, BC V1W 3S8
EDITOR: D. MARIO, BOX 342, SASKATOON, SK S7K 3L3

A WARM WELCOME IS EXTENDED TO OUR NEW MEMBERS!:

JOE SMITH, W.O. BUCHANAN, BUTCH PEARSON, H. HARRISON (ex. officio)

30

RICHMOND, QUEBEC 1914 WRECK RE-VISITED--BY W.O. BUCHANAN

Our new member Bill Buchanan kindly sent along the illustration below which is a bit different from the card Peter McCarthy sent in from the last issue (VOL.1, NO.3, May 2000, p.21). It points out the injuries of passengers and crew, as well as the railroad crossing and the St. Francois River. Bill described the reverse message on the card which was postmarked "Richmond/May 22/14/Que.":

"Dear Edna; this is the reck [sic] just out of Richmond it was some reck beleve [sic] me that is another one i [sic] was not in i see you soon [,] your true frend [sic] H.E."



WRECK NEAR RICHMOND, QUE. MAY 9 1914. ELEVEN PASSENGERS AND TWO OF THE CREW INJURED.

[Thanks Bill for helping to complete part of the story. Given the close proximity to the river bank, perhaps the tracks were washed out. Did the train hit something crossing the tracks? Ed.]

LUNENBURG SHIP BUILDING--BY J.C. CAMPBELL

The card illustrated on the following page shows a busy scene at Lunenburg, Nova Scotia. In Sailing Ships of the Maritimes by Charles A. Armour and Thomas Lackey (1975, pp. 192-193), they describe a similar scene taken from a photograph dated from 1905. Presumably the card publishers, R.H. Davis & Co., Yarmouth, N.S., utilized the photo for the firm's "Blue Nose Series".

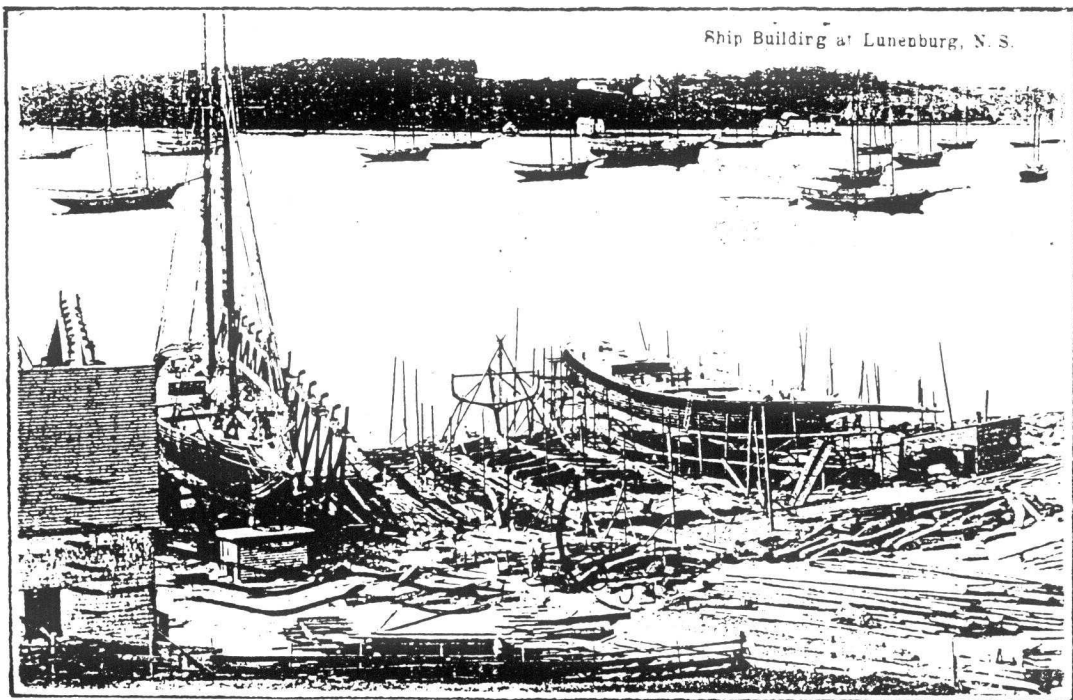
The book describes the scene as follows:

[Cont'd.]

LUNENBURG

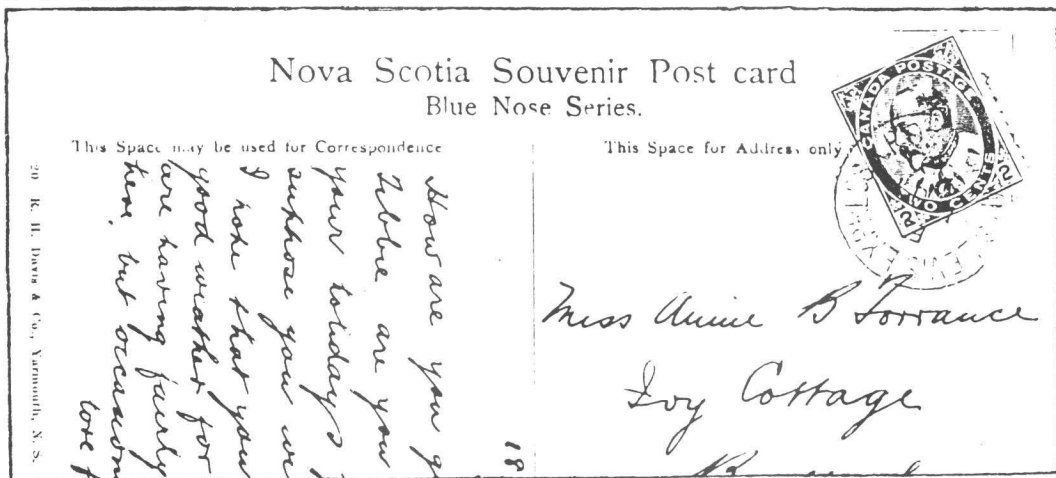
A tern schooner and a large number of two-masted schooners lie at anchor in the harbour. In the foreground is the building yard of Smith & Rhuland, established in 1900. On the left a schooner is undergoing repairs on the Marine Railway. To the far right, a new schooner is nearing completion. The seams are being caulked and puttied and preparations for launching are underway.

Between the two schooners another vessel is under construction. The keel has been laid, the stern post is in position, and one of the frames is secured to it. Six frames, which have been carefully cut to take the natural curve of the wood, are lying on the framing stage. A large quantity of curved lumber, to be used for the rest of the frames, lies on the ground. The photograph shows clearly the small space required to build a vessel.



The postmark/R.P.O. is MA-23 as shown on the reduced illustration of the card's reverse.

(message is dated 18 JL 1909)

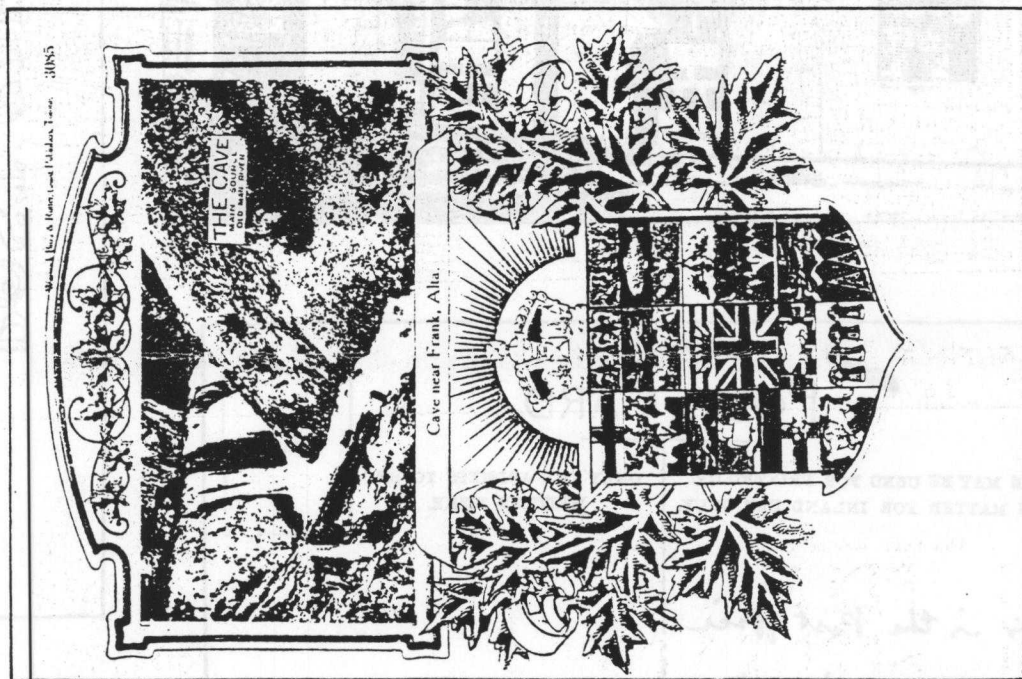


BOOK: WESTERN CANADIAN PHOTOGRAPHERS--BY JOE SMITH

Joe sent in some information on the above book. It's entitled List of Western Canada Photographers by Name and Town, 1860-1925 by Glen C. Phillips. It was published by Iron Gate Publishing of London, Ontario. Two versions also exist for Ontario. Joe remarked that the list is quite helpful, although it does not indicate if the photographers carried on a postcard business as well. He's been able to determine photographer's locations on identified cards (which would seem quite useful for unused cards if the scene is not topographical). Contact with the publishers was unsuccessful and they've moved. Perhaps this book would be a handy reference for members and copies may be available through local inter-library loans or at second-hand book stores, flea markets etc.

UNLISTED WARWICK BROTHERS & RUTTER PATRIOTIC--BY JOE SMITH

Joe also sent along this patriotic card which must be quite colourful. Bill Buchanan, a well-known collector of Warwick Brothers & Rutter cards, may have seen this card although Joe remarks that it is not within Wally Gutzman's books. It is from Wally's WBR-1 series "Framed View Over Large Canada Crest" from 1906 on. Have you seen this one Bill? [Ed.]



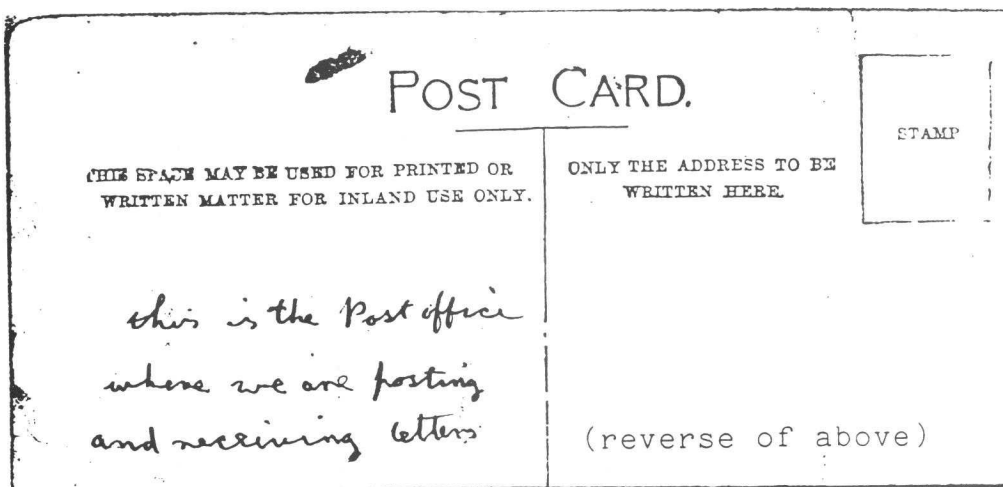
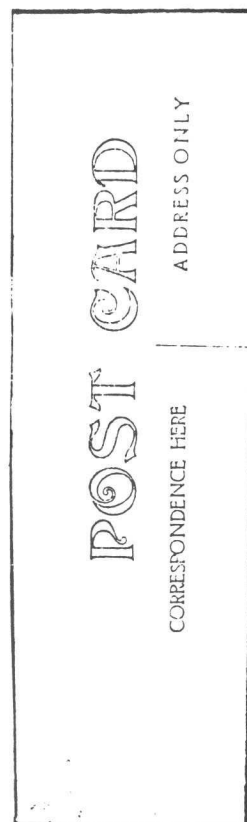
*THE DOUBLE POST OFFICE--BY PETER McCARTHY

The post office at Beebe Plain, Quebec/Vermont served two countries by one postmaster. Each country had its own entrance to one large, undivided room. The same iron post that serves as the dividing line between Vermont, U.S.A. and Quebec, Canada (right of the U.S. doorway beside the cement step) is evident on this modern view of the same building. The building's construction is of granite.

[Several different view cards of this peculiar post office have been printed. Peter sent in several views, including the modern colour photograph showing the building's present view. There are no publisher or printer indications on either of the two older cards. See FIGS.B and C at the end of this issue for more illustrations.Ed.]



(reverse of FIG.B below)



[*Members may wish to also see Peter's article within the PHSC Journal (81, 31 March 1995.)Ed.]

CANADIAN LEATHERS--BY DEAN MARIO

Leather postcards must be one of the more interesting "novelty" cards ever made. Like the woods and cards made from birch bark, leathers must have been looked upon by senders and recipients as being most unusual (and a treat to send and receive)! One of the most amazing facts about them is that the Canadian post office (and other countries too) accepted them as "mailable pieces". This card, distinctly Canadian, was sent from Vancouver, B.C. on July 16, 1906 to Manitoba.



POST CARD



Miss Sarah Newton

Sheridan

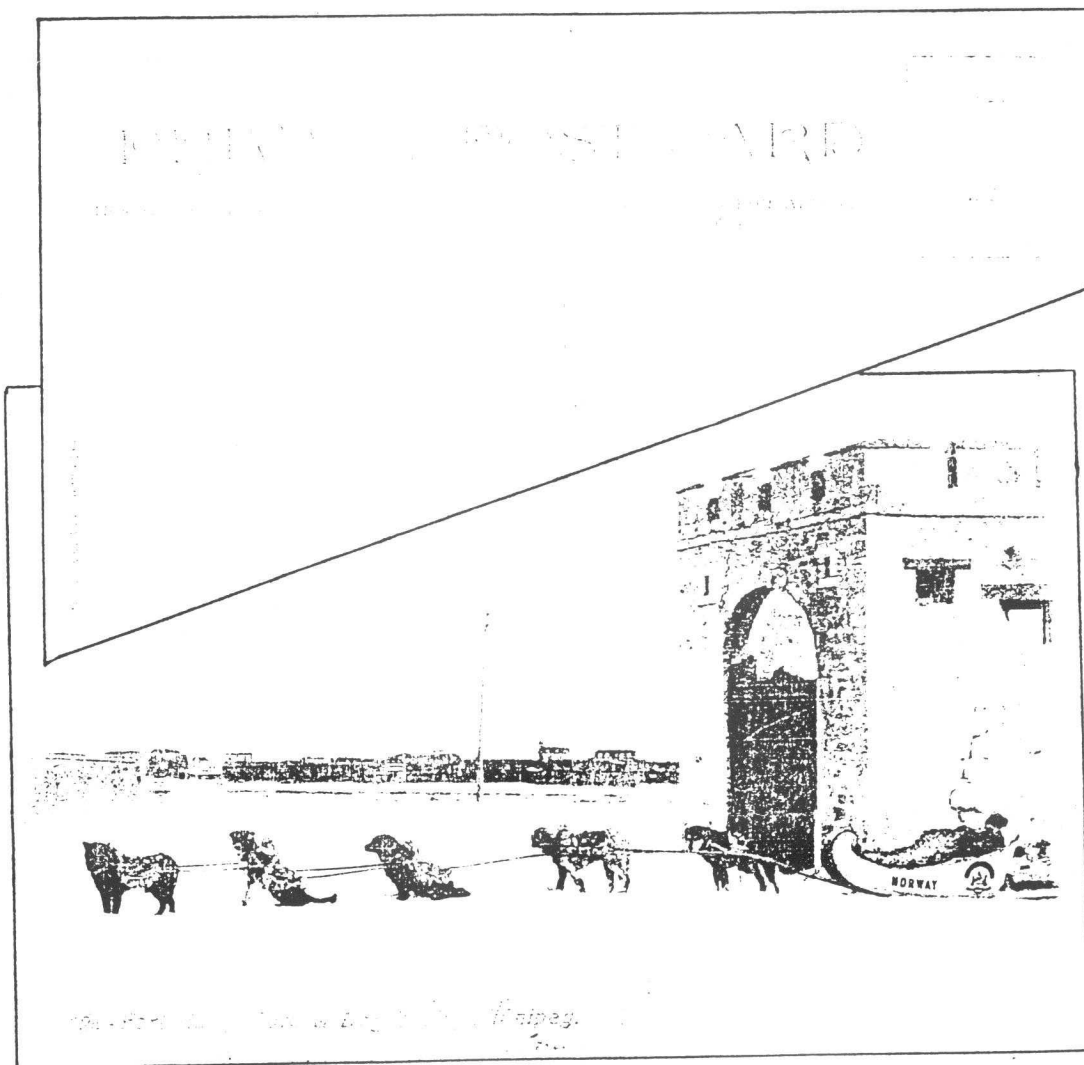
Manitoba

SHOW DATES

Sept. 16-E. Ontario P/C Show, Merrickville, ON-(613) 269-2085
 Sept. 24-Golden Horseshoe P/C Show, Burlington, ON-(905) 957-7227
 Oct. 13-15-CALTAPEX 2000, Calgary, AB-<http://members.home.net/calphilso>
 Dec. 3-Sunday P/C Fair, Toronto, ON-(905) 957-7227
 Feb. 25, 2001-Toronto P/C Club Show, Etobicoke, ON-<http://TorontoPostcardClub.com>

THE H.B.C. SLED "NORWAY"--BY M. TOMS

Maggie writes: "Enclosed is a photocopy of an interesting postcard that needs some answers. Perhaps other members could provide some information. I thought the name of 'Norway' on the sled might refer to Norway House, and that possibly there was a mail route or other service at that time between Winnipeg and Norway House. I know that a post office opened at Norway House, Keewatin on December 1, 1904, and that later it became Norway House, Manitoba. I could not find any clues about this dog team. The dogs are wearing fancy 'coats', the sleigh has a crest on it [appears to be the Hudson's Bay Co. logo. Ed.], and look how deftly the driver handles the whip! The card is postally unused and has a long crease in it, but what an interesting postcard."



[The card was issued by G.S. Co., Ltd., Winnipeg and is captioned "128-Fort Garry Gate & Dog Train, Winnipeg". I have a similar card with an identical scene from the publisher W.J. Clubb, Winnipeg and Victoria but with a number 465 as depicted on the following page. It appears to have been issued within a booklet as there are some "teeth" along the left side of the card. A number "A83024" is also on the bottom left of the card's front. I have contacted the H.B.C. Archives in the hopes that the staff there may have some idea about the scene but

[Cont'd.]

I haven't heard back at the time of publication. Coincidentally, Colin Campbell sent along a scene (Valentine & Sons) which is along similar lines. Note the similar-looking sled at the bottom left of his card. Can members shed any light on the "Norway"? Ed.]

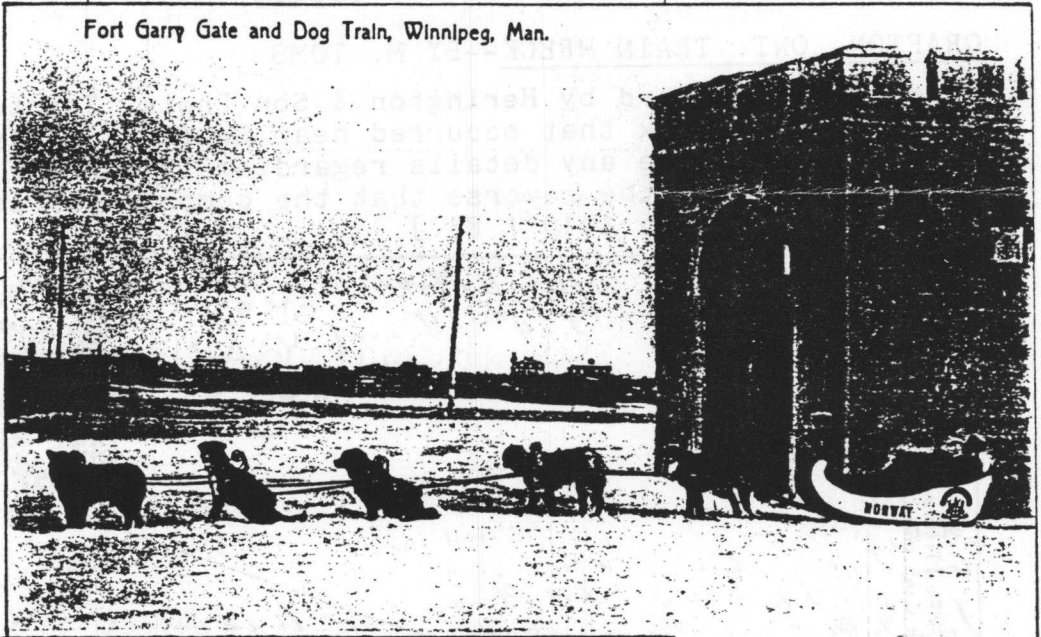
Post Card

PLACE STAMP
HERE
DOMESTIC
ONE CENT
FOREIGN
TWO CENTS

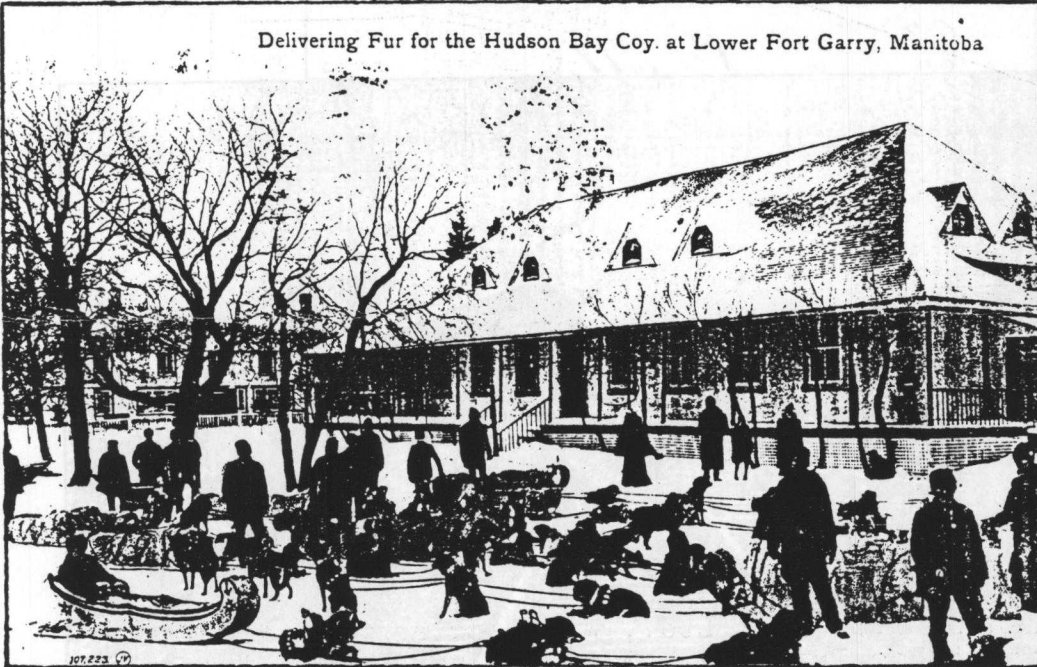
MESSAGE

ADDRESS

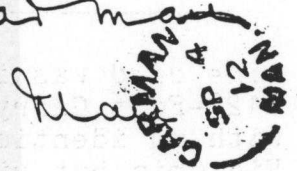
Fort Garry Gate and Dog Train, Winnipeg, Man.



Delivering Fur for the Hudson Bay Coy. at Lower Fort Garry, Manitoba



George Sells
100 Avenue
at main



107 223

Published by W. J. Clubb, Winnipeg and Victoria, No. 466

TORONTO'S WALKER HOUSE--BY D. MARIO


Members will certainly recognize this colourful and attractive card (see FIG.D on p.41) issued by the owners of the Walker House in Toronto. The eye-catching card, printed by Stone Ltd., was among the many illustrated cards Walker House issued to advertise for an international clientele. Certainly Edwardian. I've also seen later versions used post-1914, with enemy Central Powers' flags (ie. Austria, Germany, Turkey etc.) blackened out. This card must be one of the most exceptional advertising postcards issued for a Canadian business!

GRAFTON, ONT. TRAIN WRECK--BY M. TOMS

Here's a photo card by Herington & Son Photo, Trenton, Ontario depicting a train wreck that occurred near Grafton, Ontario on October 10, 1911. I don't have any details regarding this wreck. [Can members assist? I noted on the reverse that the company states: "25,000 Photo Post Cards made in 1910"! Ed.]

Grafton, Ontario.
 Dearest Winnie,
 Oct 11th 1911

POST CARD



the...
 with...
 city...
 here...
 coming...
 going...
 under...
 not...
 and...
 first...
 give...

Winnipeg

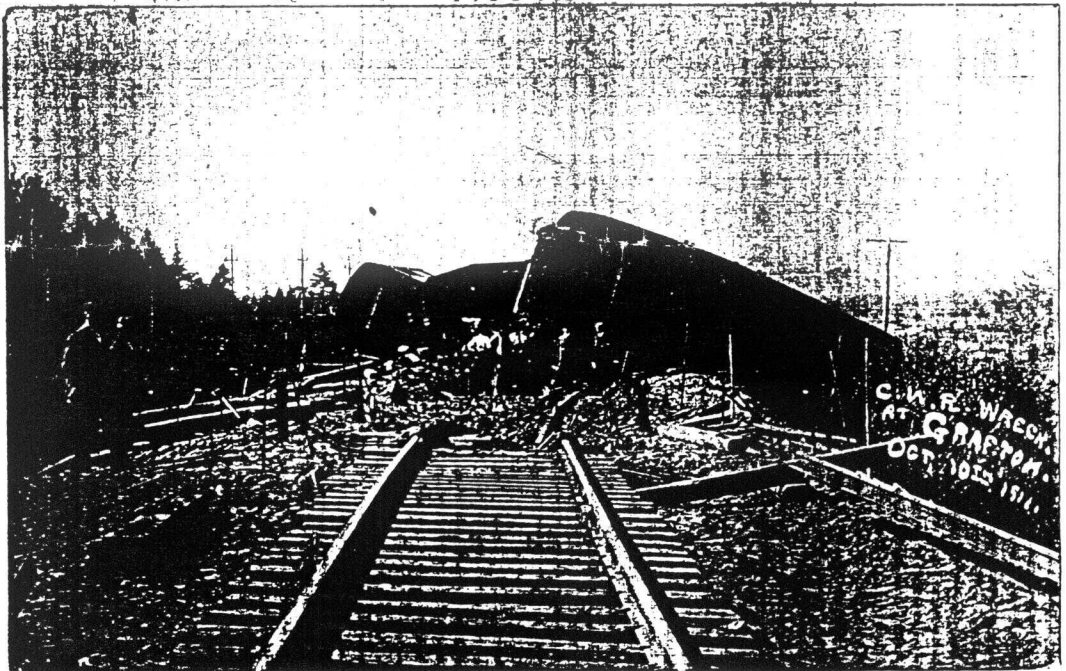


FIG. A



MAIN STREET, NORTH DAFOE, SASK.

FIG. B

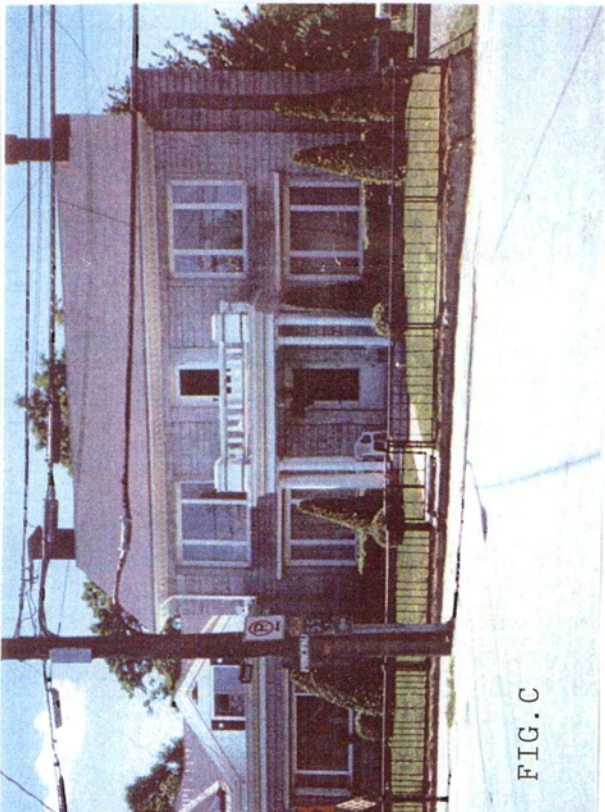
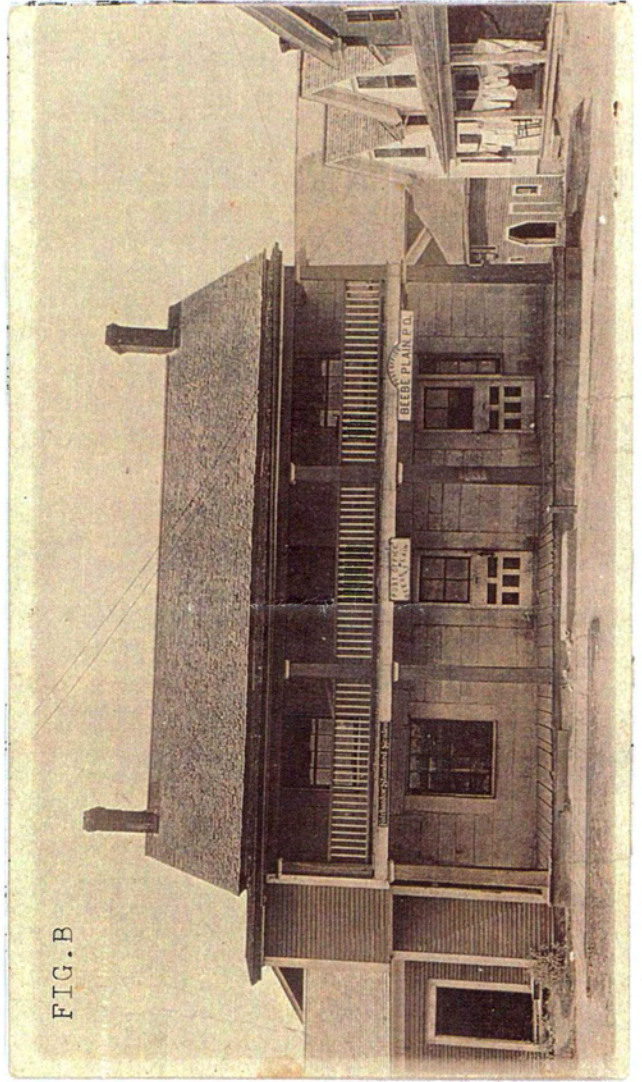


FIG. C

FIG. D

WALKER HOUSE

YOU WILL FIND EVERYTHING HERE THAT THE WORDS COMFORT AND SATISFACTION IMPLY

TORONTO, CANADA

THE HOUSE OF PLENTY

Geo. Wright & Co. Importers

WHOLESALE AND RETAIL DEALERS IN ALL THE LATEST FASHIONABLE GOODS

WHOLESALE AND RETAIL DEALERS IN THE THREE IMPERIALS

UNITED STATES | CANADA | BRITAIN | AUSTRALIA | SOUTH AFRICA | S. AMERICA | ITALY | SWEDEN | DENMARK | GREECE | PORTUGAL | SPAIN | FRANCE | BELGIUM | HOLLAND | SWITZERLAND | AUSTRIA | CZECH REPUBLIC | SLOVAKIA | POLAND | CROATIA | SLOVENIA | ROMANIA | BULGARIA | SERBIA | TURKEY | GERMANY | JAPAN | CHINA | INDIA | SINGAPORE | MALAYSIA | PHILIPPINES | HAWAII | ALASKA | VICTORIA | CANADA | BRITAIN | AUSTRALIA | SOUTH AFRICA | S. AMERICA | ITALY | SWEDEN | DENMARK | GREECE | PORTUGAL | SPAIN | FRANCE | BELGIUM | HOLLAND | SWITZERLAND | AUSTRIA | CZECH REPUBLIC | SLOVAKIA | POLAND | CROATIA | SLOVENIA | ROMANIA | BULGARIA | SERBIA | TURKEY | GERMANY | JAPAN | CHINA | INDIA | SINGAPORE | MALAYSIA | PHILIPPINES | HAWAII | ALASKA | VICTORIA | CANADA