

# Nautical Times



Newsletter of the Canadian Inland Waterways Study Group  
British North America Philatelic Society

Number 8

December 2000

Editor: Bob Parsons

75 Beacham Cres., Newcastle, ON L1B 1N1

Phone: (905) 987-1796

E-mail: kparsons@sympatico.ca

Treasurer: Michael Reid  
& Mailing

Box 283, Schomberg, ON L0G 1T0

Phone: (905) 939-7335

## Saguenay Royal Mail Line



1884. —OF— 1884.

Steamers to the Saguenay,

**TADOUSAC,**  
**CACOUNA,**  
**RIVIERE DU LOUP**  
and  
**MURRAY BAY.**

COMMENCING ON THE 20TH INSTANT  
the well-known first-class Steamers  
"SAGUENAY," Capt. M. Lecours  
"UNION," Alex. Barras.  
Will leave the St. Andrew's Wharf as follows  
TUESDAYS and FRIDAYS, at 7.30 A.M.,  
the "Saguenay," for Chicoutimi and Ha! Ha!  
Bay, calling at Baie St. Paul, Murray Bay,  
Riviere du Loup and Tadousac.  
WEDNESDAYS and SATURDAYS, at  
7.30 A.M., the "Union," for Chicoutimi and  
Ha! Ha! Bay, calling at Ile aux Coudres,  
Eboulements, Murray Bay, Cap a L'Aigle  
(when practicable), Riviere du Loup, Tadousac  
and L'Anse St. Jean.  
Leaving Riviere du Loup:—For the Saguenay,  
at 5.00 P.M. same day; and for Quebec,  
Wednesdays, Thursdays and Saturdays at 5.00  
P.M. and on Sundays at 7.00 P.M.

TICKETS for sale, and State Rooms secured  
at the General Ticket Office, oppo to the St.  
Louis Hotel, at the Office of the St. LAWRENCE  
STEAM NAVIGATION COMPANY, St. Andrew's  
Wharf, and on board of the Steamer.

A. GABOURY,  
Secretary.

June 7, 1884.

It is proposed to place a third Boat on  
the Line in the early part of July, notice of  
which will be given shortly

Season's greetings and a Happy New Year. I hope everyone had an enjoyable Holiday experience.

This issue wraps up the Clarke Steamship Company theme. The focus this time around is on two of the larger vessels providing a Labrador and Quebec North Shore Cruise service. The two ships are the *North Star* and the *New Northland*. I hope this three-parter has been a good introduction to the ships and markings of the Clarke Steamship Company, an operation that spanned more than 40 years.

The advertisement on the left describes the operating schedule of the Saguenay Royal Mail Line. Over years of collecting steamboat covers, books and steamboat ephemera, and research in the National Archives, I have never seen anything related to this service. This is an area that clearly needs lots of new research.

By now, most of you will be aware that my main steamboat mail collection was sold at auction last summer. This has not diminished my interest in steamboat mails in general, and in several specific areas of steamboat collecting. I will continue to edit this newsletter, as long as the interest is there and the material comes in. However, please be assured that the cupboard is getting bare. I can employ any material you care to send in my direction.

## Item 94. Steamboats in Smith's Canadian Gazetteer - 1846

Bruce Graham brought my attention to the reprint of the book *Smith's Canadian Gazetteer 1846*. It contains a wealth of detail about the towns in Upper Canada, circa 1845, and, in addition, lists the steamboats that operated out of the various ports in that Province. Bruce has noted the primary references, below, and intends to make a complete listing of the steamboat references at a later date.

### LAKE ONTARIO

#### HAMILTON

British steamboats *Eclipse & Queen* leave daily for Toronto during the season. The American steamboat *Express* leaves daily for Queenston and Niagara. Fares were 7s6d on the Toronto trip; *Eclipse* left at 8 A.M.; the *Queen* at 2 P.M. The Queenston & Niagara route was 10s and departure time was 7 A.M.

#### KINGSTON

"There are ten daily steamboats running to and from Kingston".  
The following steam vessels are owned at Kingston.

	Tonnage	Horsepower
Canada	330	50
Guildersleeve	255	50
Hunter	197	28
Prince Albert	150	30
Beaver	197	28
Otter	197	28
Prince Edward	188	45
Prince of Wales	130	40
Bytown	100	25
Juno	100	25
Mercury	100	25
Meteor	100	25
Charlotte	50	18
Brittania	100	30
Caledonia	100	25
Lily	100	25
Grenville	75	25
Ontario	100	32
Frontenac	138	45
	<hr/> 2707	<hr/> 594

## TORONTO

Admiral	288
Princess Royal	347
Sovereign	314
Eclipse	198
City of Toronto	349
Chief Justice Robinson	315
Cobourg	317
Traveller	300
Transit	225
America	221
Despatch	186
Queen Victoria	149
	<hr/>
	3209

Steamboats leave daily for Kingston, Hamilton, Niagara, Queenston and Lewiston, and Rochester; Calling at Port Hope, Cobourg and other intermediate places.

## LAKE ERIE

### CHATHAM

*Brothers* owned by Captain Eberts is owned here and during the season, leaves Chatham for Detroit and Amherstburgh every Monday, Wednesday and Friday, returning on the alternate days. The *London*, Captain Van Allen (the fastest boat on the upper lakes) meets the *Brothers* at Detroit, and continues the route to Buffalo, touching at the intermediate ports on the Canadian side.

### SARNIA

The American steamboats *Hercules*, *Samson*, *Princeton*, and *St. Louis*, stop regularly on their passages to and from Buffalo and Chicago. The *Huron* and *Red Jacket* leave here every morning alternately for Detroit.

The British steamer *Gore* from Windsor to Goderich and Gloster Bay stopped regularly.

### Item 95. Mails to Quebec's North Shore - 1871

The following page contains a Tender for the carriage of mail between Gaspé Basin and the North Shore ports. The service was to be conducted by schooner. I have only seen one or two covers go by this service, and these were in later years. The Tender came from the Postal Museum, in both French and English versions.



## TENDERS

Will be received, addressed to the Postmaster General at Ottawa, until ~~Saturday~~ <sup>Tuesday 25</sup> the ~~22nd~~ April, for the transport of a Mail during the season of navigation of 1871, by a schooner of not less than 20 tons burthen, between Gaspé Basin and the North Shore of the Gulf of St. Lawrence in the following manner:

To leave Gaspé Basin twice a month, immediately after the arrival of the Gulf Steamer from New Brunswick and the Baie des Chaleurs, and to proceed to Sheldrake, calling at the West Point of Anticosti when the weather will permit; from Sheldrake proceeding to Point aux Esquimaux, touching at Magpie Bay and Mingan, and returning from Point Aux Esquimaux to Gaspé Basin, touching at the same points for return Mails; once a month to go on from Point Aux Esquimaux to Natashquan, then to Fox Bay, (Bell Bay) Anticosti, and thence back to Point aux Esquimaux.

The Tender to specify the tonnage of the vessel by which the service will be performed, and the rate per month to be paid, subject to deduction for any voyage not made, or other failure to perform the service required; also, the names of two responsible persons willing to become surety for the Contractor.

Payment for the service will be made at Gaspé Basin monthly, on the performance of each months voyages.

A. CAMPBELL,

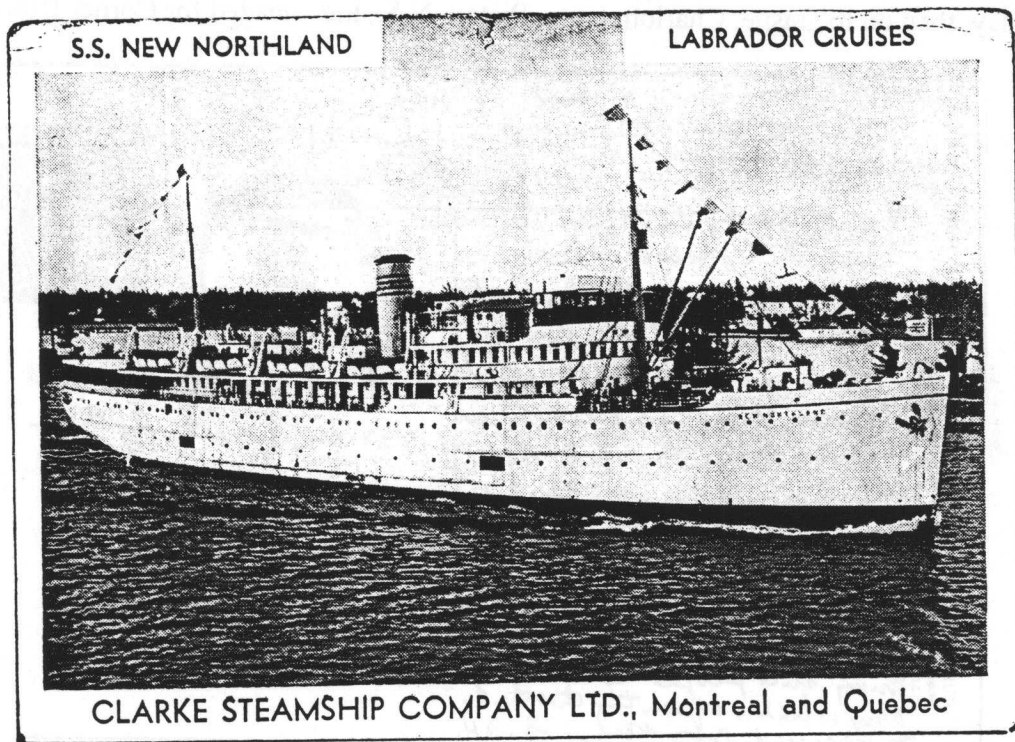
*Postmaster General.*

POST OFFICE DEPARTMENT,  
Ottawa, March, 1871.



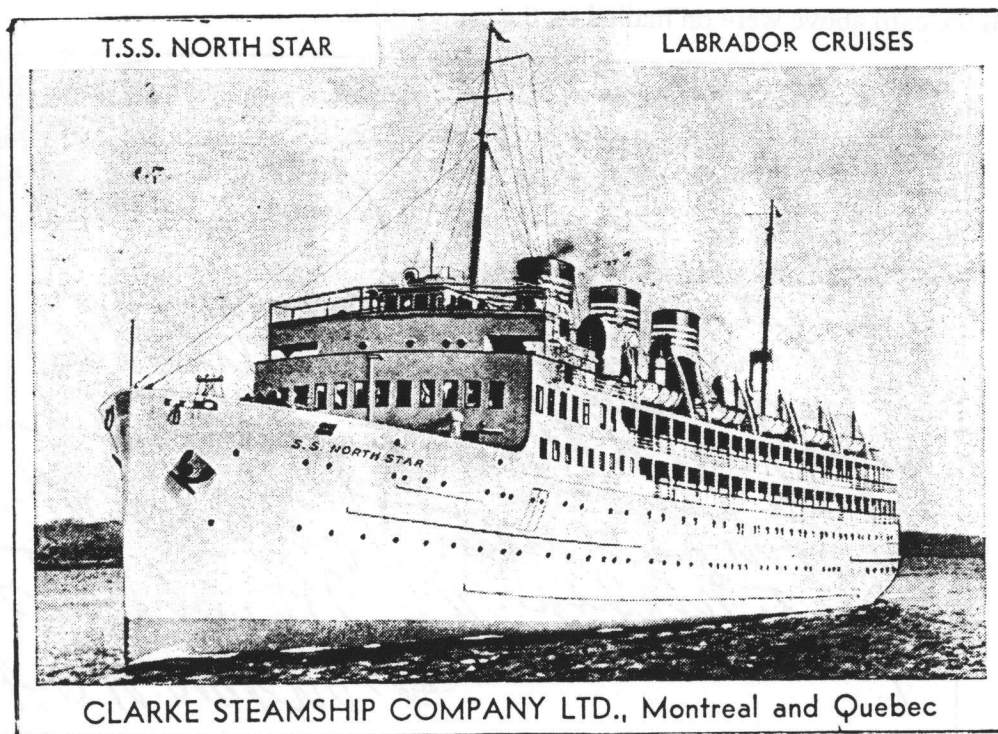
**Item 96. S.S. New Northland – Labrador Cruises Advertising Card**

Postcard of the Clarke Steamship Company, advertising its cruises to Labrador by the *S.S. New Northland*. Note on reverse written 7-21-37, but does not appear to have been mailed.



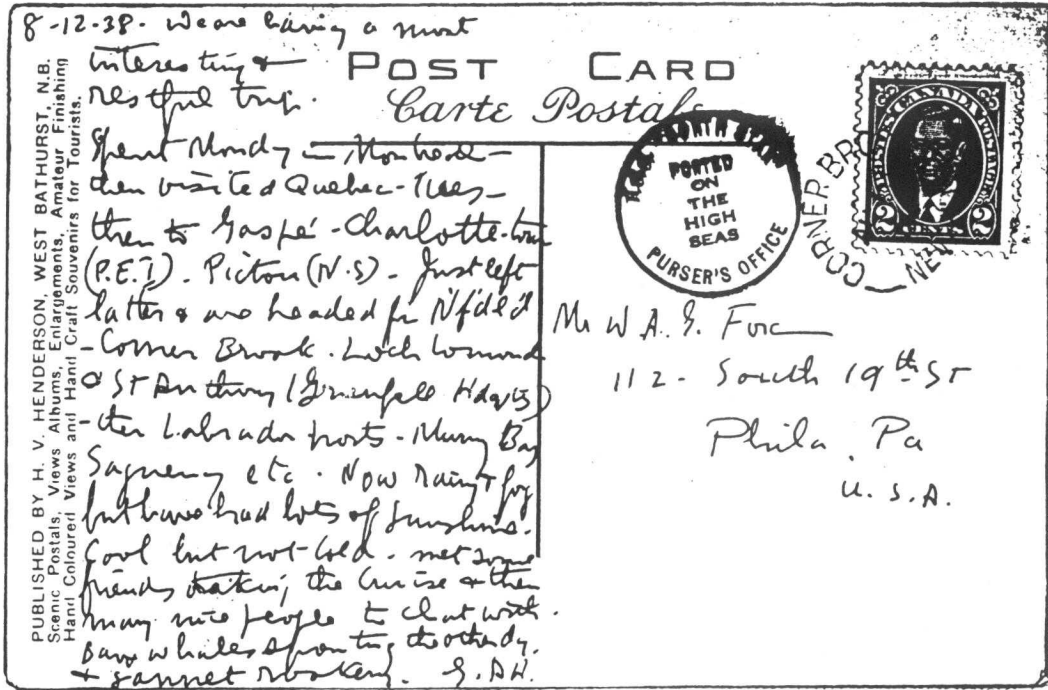
**Item 97. T.S.S. North Star – Labrador Cruises Advertising Card**

Postcard of the Clarke Steamship Company, advertising its cruises to Labrador by the *T.S.S. North Star*. Addressed to the U.S., the card entered the mails at Gaspé on July 28, 1937.



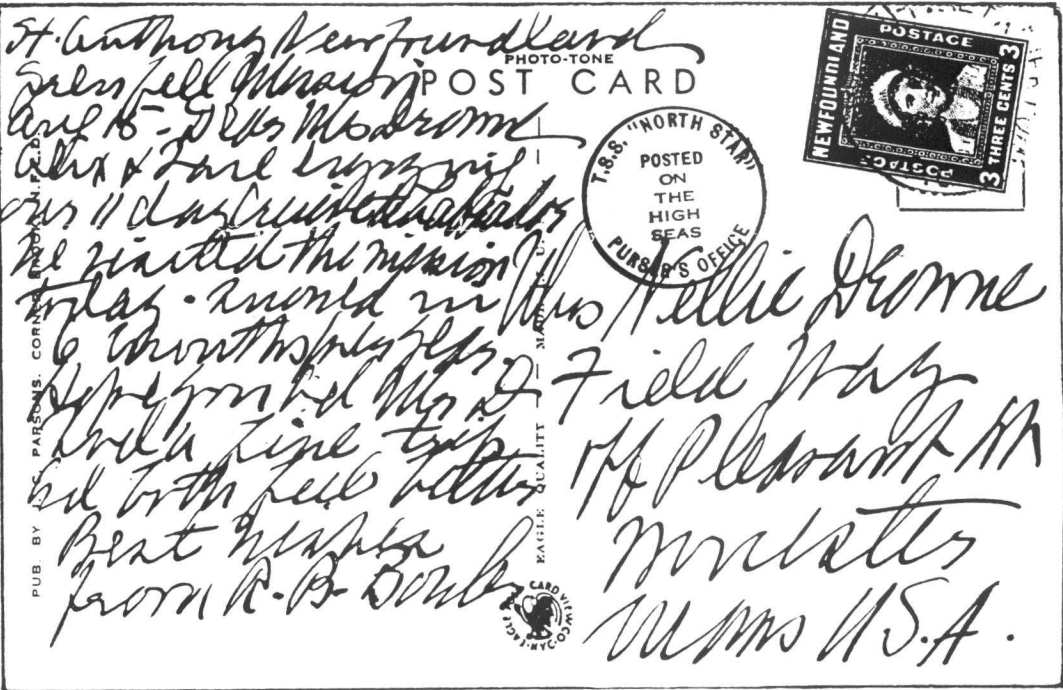
**Item 98. T.S.S. North Star Posted on the High Seas**

Postcard written on board the *North Star* on 8-12-38. Entered mails at Corner Brook, NFLD on the following day. The writer's note indicated the route of the *North Star*; Montreal on Monday, Quebec on Tuesday, then on to Gaspé, Charlottetown, Pictou, N.S., then headed for Corner Brook.



**Item 99. T.S.S. North Star Posted on the High Seas**

This postcard was written on Aug 15 on board the *North Star* while at St. Anthony's Newfoundland, but did not enter the mails until the ship was almost home, Point au Pere - Father Point on AUG 18/38. This and the card above were on mailed on the same cruise.



**Item 100. T.S.S. North Star Cruise Schedule - 1938**

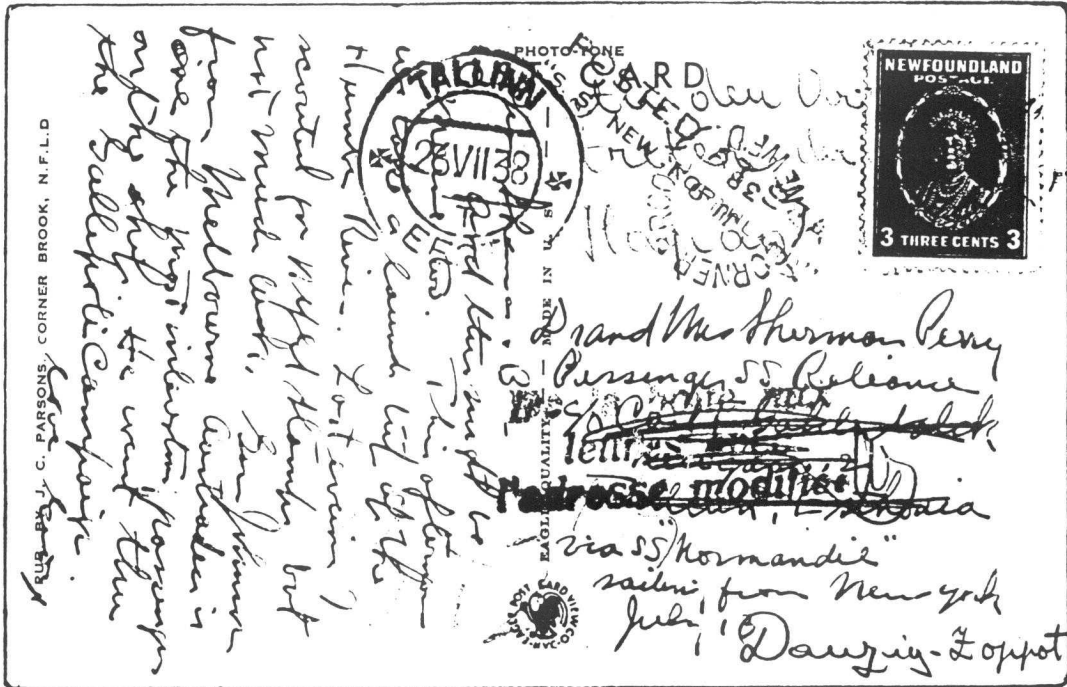
Port	Arrive/Leave	Cruise No. 1	Cruise No. 2	Cruise No. 3	Cruise No. 4
Montreal	Lv: 9:00pm	Mon. July 11	Mon. July 25	Mon. Aug. 8	Mon. Aug. 22
Quebec	7:00am/Noon	Tue. July 12	Tue. July 26	Tue. Aug. 9	Tue. Aug. 23
Gaspe	Noon/5:00pm	Wed. July 13	Wed. July 27	Wed. Aug. 10	Wed. Aug. 24
Charlottetown	9:00am/3:00pm	Thu. July 14	Thu. July 28	Thu. Aug. 11	Thu. Aug. 25
Pictou	7:00pm/1:30pm	July 14-15	July 28-29	Aug. 11-12	Aug. 25-26
Corner Brook	8:30am/Midn't	Sat. July 16	Sat. July 30	Sat. Aug. 13	Sat. Aug. 27
Loch Lomond	5:30am/12:30pm	Sun. July 17	Sun. July 31	Sun. Aug. 14	Sun. Aug. 28
St. Anthony	5:00am/4:00pm	Mon. July 18	Mon. Aug. 1	Mon. Aug. 15	Mon. Aug. 29
Forteau	5:00am/Noon	Tue. July 19	Tue. Aug. 2	Tue. Aug. 16	Tue. Aug. 30
Havre St. Pierre	8:00am/11:00am	Wed. July 20	Wed. Aug. 3	Wed. Aug. 17	Wed. Aug. 31
Saguenay River	6:00am/Noon	Thu. July 21	Thu. Aug. 4	Thu. Aug. 18	Thu. Sept. 1
Murray Bay	3:00pm/Midn't	Thu. July 21	Thu. Aug. 4	Thu. Aug. 18	Thu. Sept. 1
Quebec	6:00am/7:00am	Fri. July 22	Fri. Aug. 5	Fri. Aug. 19	Fri. Sept. 2
Montreal	Arr: 6:00pm	Fri. July 22	Fri. Aug. 5	Fri. Aug. 19	Fri. Sept. 2

**Item 101. S.S. New Northland Grenfell-Labrador Cruise Schedule - 1938**

Port	Arrive/Leave	Cruise No. 2	Cruise No. 3	Cruise No. 4	Cruise No. 5	Cruise No. 6
Montreal	Lv: 8:30pm	Mon. July 4	Mon. July 18	Mon. Aug. 1	Mon. Aug. 15	Mon. Aug. 29
Quebec	8:30am/2:00pm	Tue. July 5	Tue. July 19	Tue. Aug. 2	Tue. Aug. 16	Tue. Aug. 30
Mont Louis	4:00pm/7:00pm	Wed. July 6	Wed. July 20	Wed. Aug. 3	Wed. Aug. 17	Wed. Aug. 31
Gaspe	7:00am/11:00am	Thu. July 7	Thu. July 21	Thu. Aug. 4	Thu. Aug. 18	Thu. Sept. 1
Corner Brook	3:30pm/2:30pm	July 8-9	July 22-23	Aug. 5-6	Aug. 19-20	Sept. 2-3
Forteau Bay	7:00am/10:30am	Sun. July 10	Sun. July 24	Sun. Aug. 7	Sun. Aug. 21	Sun. Sept. 4
Battle Harbour	7:30pm/10:30am	July 10-11	July 24-25	Aug. 7-8	Aug. 21-22	Sept. 4-5
St. Anthony	5:30pm/3:30pm	July 11-12	July 25-26	Aug. 8-9	Aug. 22-23	Sept. 5-6
Harrington	11:00am/3:00pm	Wed. July 13	Wed. July 27	Wed. Aug. 10	Wed. Aug. 24	Wed. Sept. 7
Havre St. Pierre	8:00am/10:00am	Thu. July 14	Thu. July 28	Thu. Aug. 11	Thu. Aug. 25	Thu. Sept. 8
Saguenay River	am/pm	Fri. July 15	Fri. July 29	Fri. Aug. 12	Fri. Aug. 26	Fri. Sept. 9
Murray Bay	5:00pm/Midn't	Fri. July 15	Fri. July 29	Fri. Aug. 12	Fri. Aug. 26	Fri. Sept. 9
Quebec	8:00am/Noon	Sat. July 16	Sat. July 30	Sat. Aug. 13	Sat. Aug. 27	Sat. Sept. 10
Montreal	Arr: 8:00am	Sun. July 17	Sun. July 31	Sun. Aug. 14	Sun. Aug. 28	Sun. Sept. 11

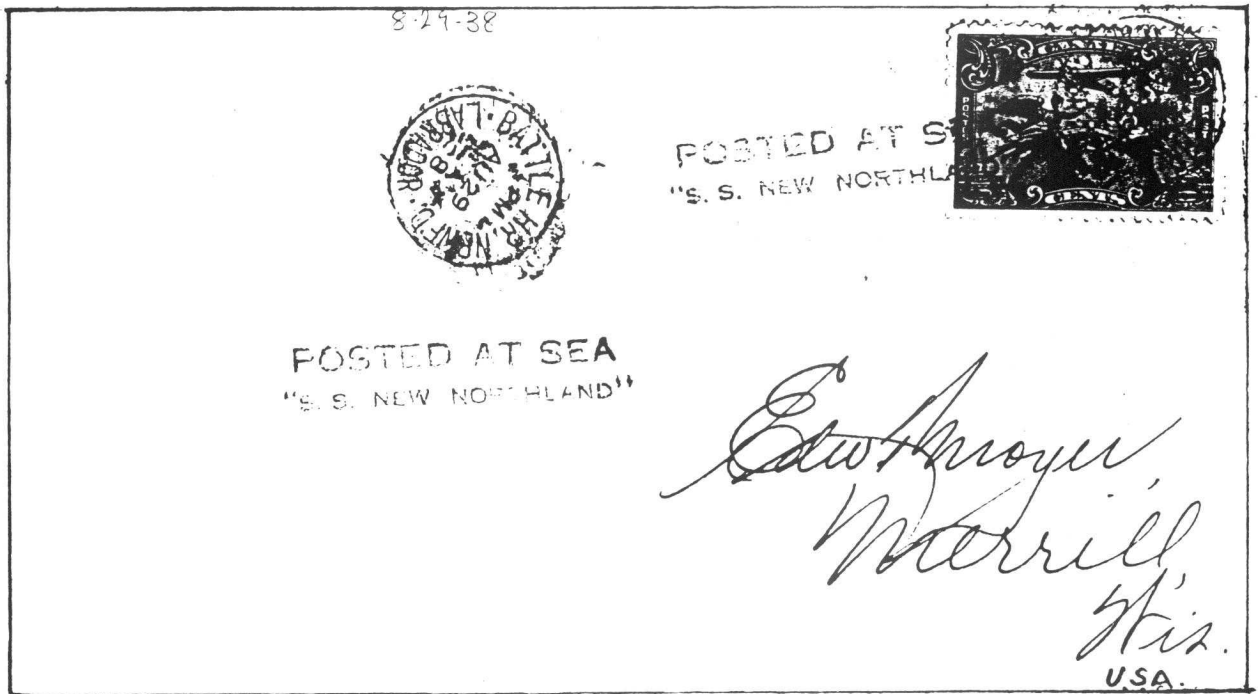
**Item 102. S.S. New Northland Posted at Sea**

Postcard mailed on the *New Northland*, where it received the POSTED AT SEA / "S. S. NEW NORTHLAND" handstamp in a pink colour. It entered the mails at Corner Brook on JUL 9 / 38, destination Estonia.



**Item 103. S.S. New Northland Posted at Sea from Battle Harbour**

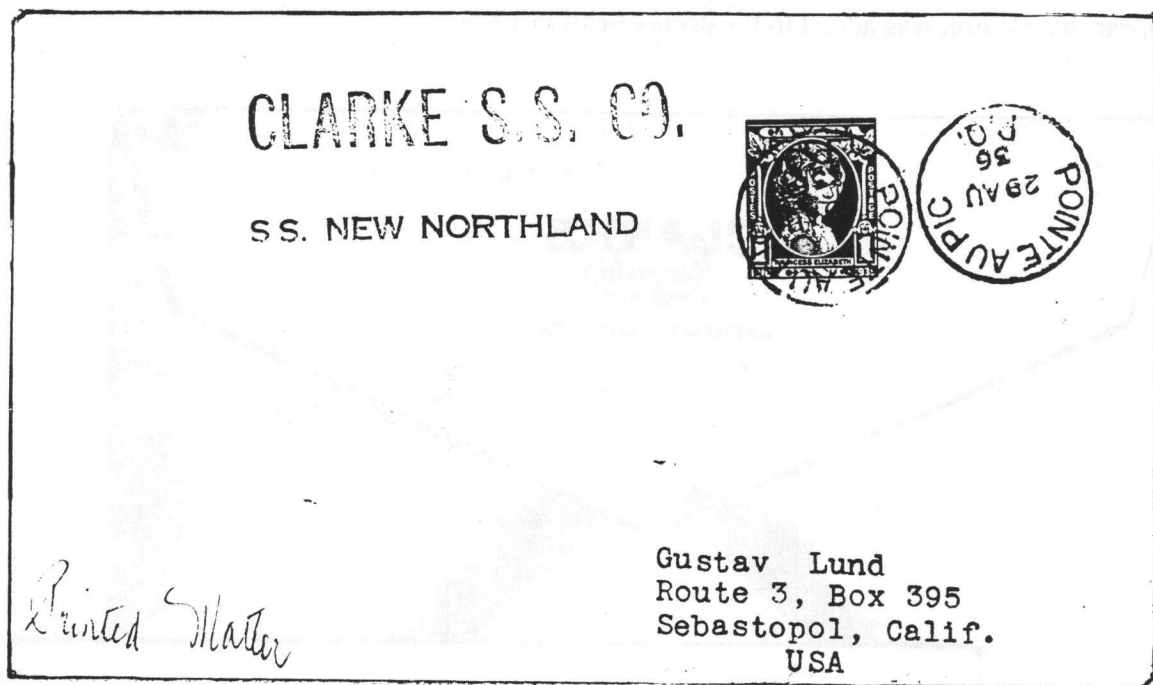
This cover of a letter originated on the *New Northland*, and received a similar 2-line handstamp to the that above. It entered the mails at Battle Harbour, Labrador on AU 29 / 38. This date does not correspond to the schedule on the prior page, suggesting a date error in the Battle Harbour stamp, or a change in the cruise schedule.





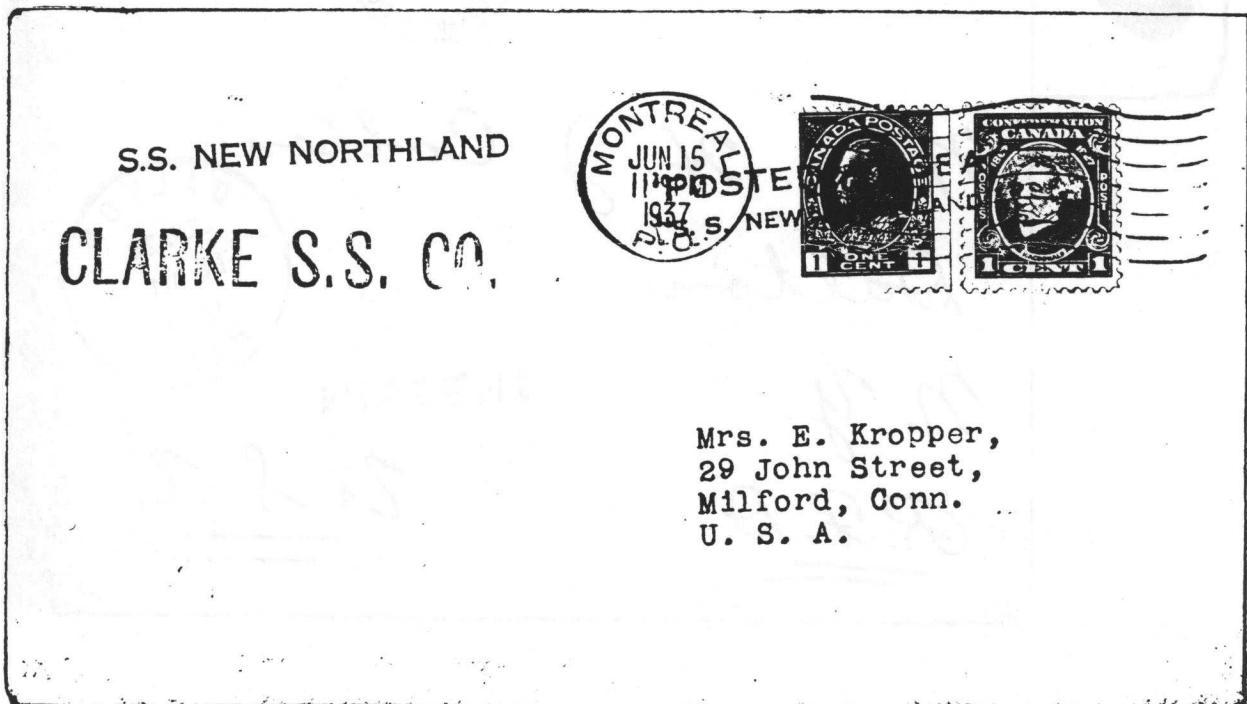
**Item 104. Clarke S.S. Co. - S.S. New Northland**

Postcard mailed on the *New Northland*, where it received the CLARKE S.S. CO. / s. s. NEW NORTHLAND handstamp in a blue colour. This is actually two different handstamps. The letter entered the mails at Pointe au Pic on 29AU / 36.



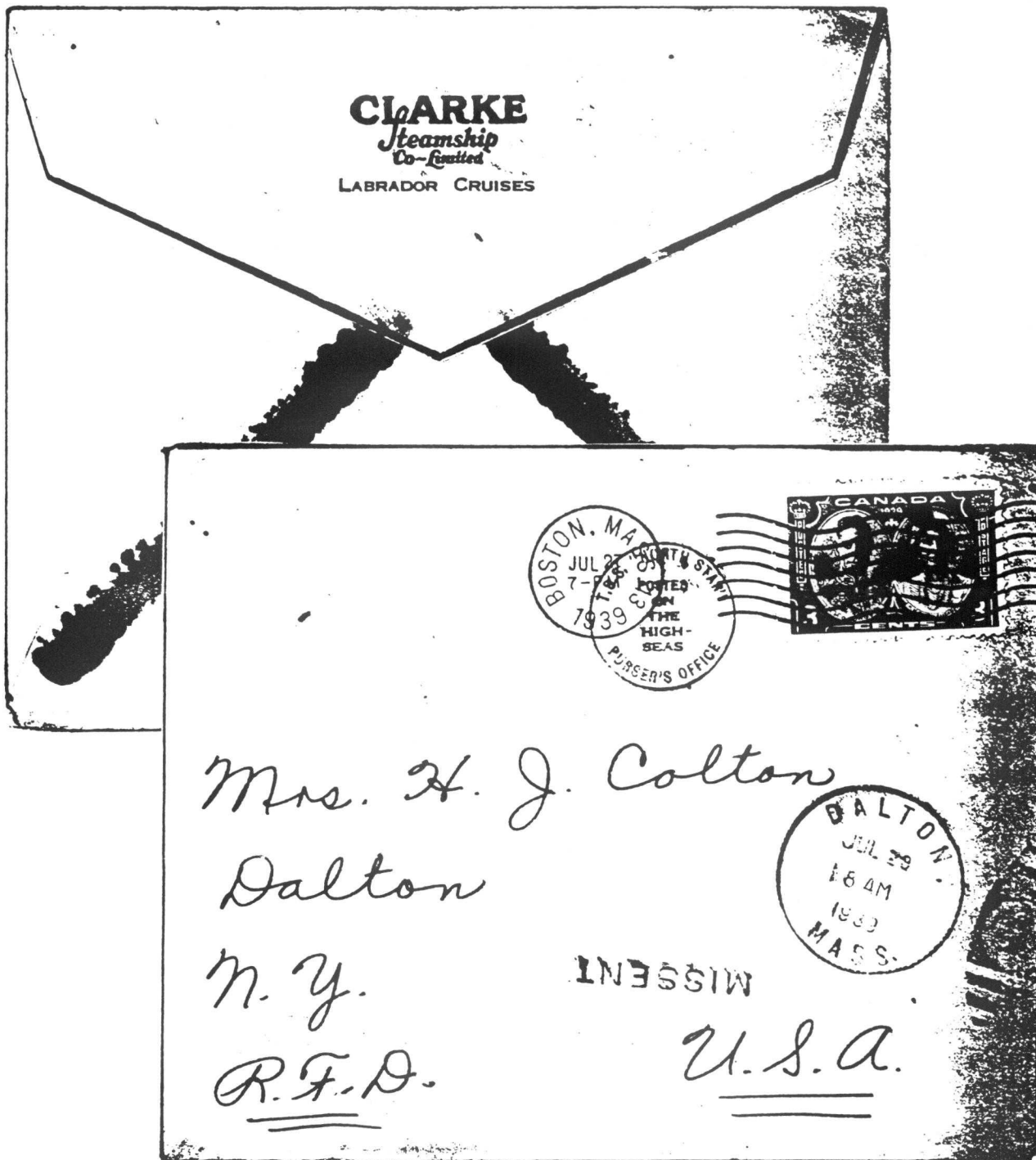
**Item 105. Clarke S.S. Co. - S.S. New Northland**

This cover of a letter originated on the *New Northland*, and received the same handstamps as above but in a magenta colour. Under the Montreal machine cancel, dated JUN 15 / 11<sup>30</sup>PM / 1937, there is the 2-line POSTED AT SEA / "S. S. NEW NORTHLAND" handstamp in the same magenta colour.



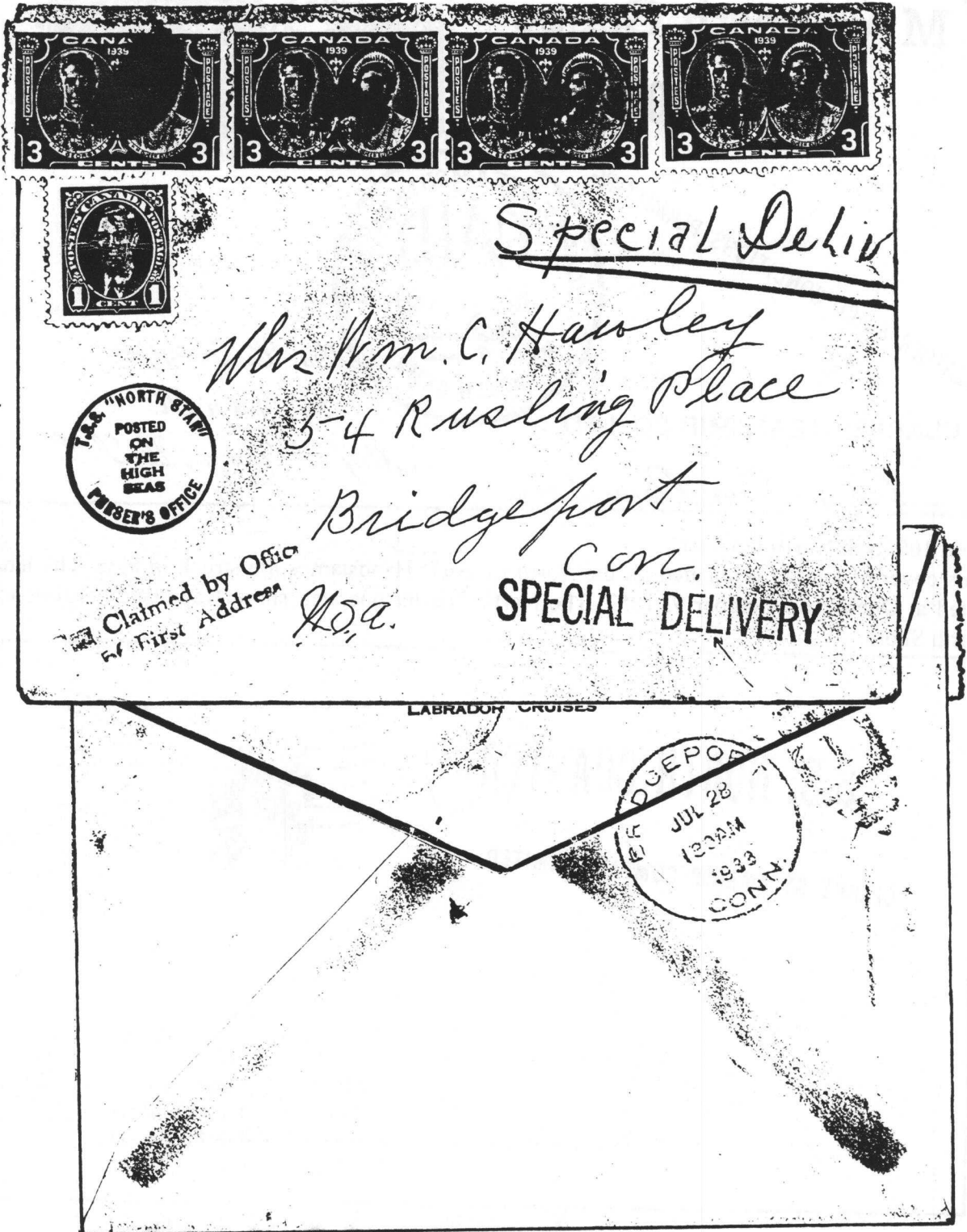
Item 106. T.S.S. North Star - Labrador Cruise 1939

Kevin O'Reilly sent along this example of the T.S.S. "NORTH STAR" purser marking used on Clarke Steamships stationary. The letter entered the mails at Boston on JUL 27, 1939. Arriving at Dalton Mass. on JUL 29, it was stamped MISSENT and presumably forwarded on to Dalton, N.Y. It would appear that Boston was added to the ports of call in 1939.



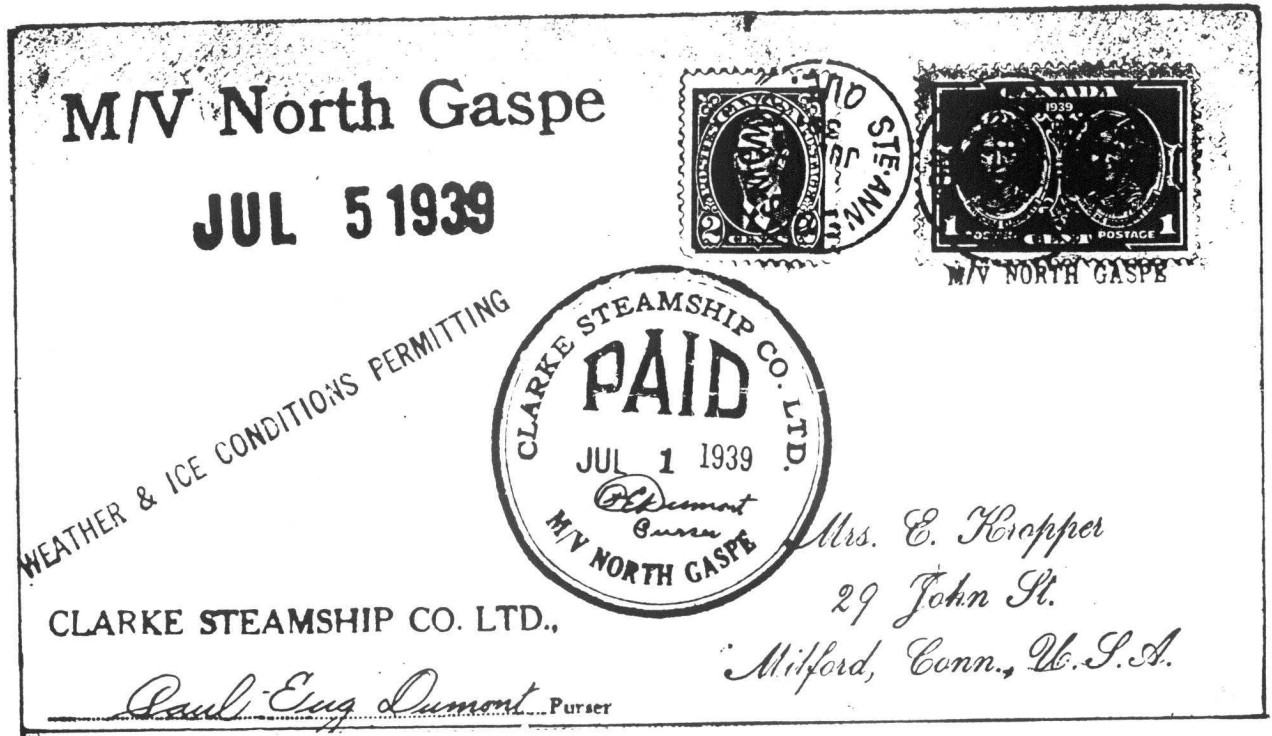
Item 107. T.S.S. North Star – Labrador Cruise 1939

This is a similar cover to Kevin's illustrating an example of the T.S.S. "NORTH STAR" blue purser marking used on Clarke Steamships stationary. Sent as a Special Delivery letter, there is no date of mailing or origination. On the reverse is the receiving date at Bridgeport, Connecticut, dated JUL 28, 193?. This could be 1938 or 1939, but I think it fits nicely with Kevin's cover's arrival at Boston on July 27, 1939.



**Item 108. M/V North Gaspe - 1939**

This letter probably contains an example of every handstamp available to the purser on the *North Gaspe*. All of the handstamps are a blue-green colour. Note the tiny M/V NORTH GASPE handstamp under the one-cent stamp. The letter entered the mails at Ste. Anne des Monts on JUL 5/39. The *North Gaspe* operated cruises to the Gaspe peninsula and the Magdalen Islands.



**Item 109. S.S. North Coaster**

This cover of a letter originated on the *North Coaster*. Handstamps are struck in blue. The letter is dated at Quebec on October 9, 1953. The *North Coaster* operated short "vagabond" cruises to the North Shore.

