

October 10, 1980

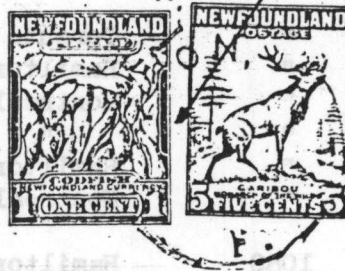
Dear Member:

Our fortieth Newsletter will find its way to McAllen, Texas the site of the BNAPS annual meeting and exhibition. It is planned that a Military Mail Seminar will be held with Study Group members Ed, Ken, Joe and Sid, known at this time, in attendance. We hope others will join them and enjoy an interesting discussion on the FORCES of Canada, World War Two, which include "Y" Force (Jamaica). Take a special item along to show. November 5 - 8.

317...Further to item 307 on Avalon F.M.O. cancels

coloured rectangle & broad letters & figures

nil rectangle & fine letters, etc.



The coloured rectangle didn't photocopy well so we've darkened it in and added other features to look for in distinguishing between these two similar cancels. Go for it.

318...The Smith correspondence - WW1

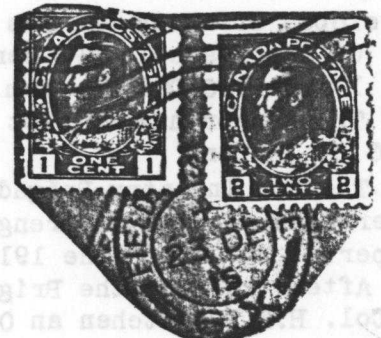
Our member Dave Crane loaned us a lot of 60 some covers to study and this has proved most interesting and useful. A complete listing in chronological order was made which comprised 10 columns. The listing in this Newsletter is much abbreviated but representative of the larger study.

All the covers were sent to two different addresses in Woodstock, Ontario beginning in June 1915 and ending in March 1917. It would be interesting to know of any other covers from this correspondence which belong to study group members.

Among the points of interest is the remarkably good service rendered from the application of the military cancel to the receipt of the letter by the addressee. A few covers picked at random averaged 18½ days in transit from France to Woodstock during a World War.

All but six covers bear Canadian stamps to prepay the soldier's "free" mail. A brief item on Free Franked Soldier's Mail may be found in NL 11, item 32.

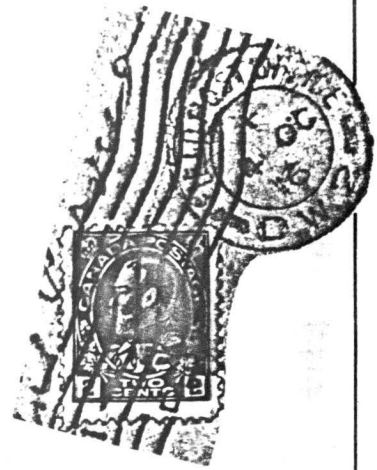
Another point of interest is that the "receiving office", where the stamps were affixed and cancelled most frequently was Hamilton, Ontario (45) with Montreal (9) and Toronto (4) thus proving that the nearest office to a particular address did not always perform the "receiving" function.



318...cont'd



FPO name or number	FPO date	Formation	Censor #	Cdn. rec. office
Shorncliffe	Jun 1 15	camp	nil	nil
Otterpool	Jul 21 15	camp	nil	nil
6X	*Sep 21 15	2nd Cdn Div		
		6th Bde	2190	Hamilton
6X	Oct 7 15	"	"	"
6X	Nov 24 15	"	"	"
6X	Dec 23 15	"	"	"
6X	Jan 17 16	"	1873	"
DX2	Feb 11 16	2nd Cdn Div		
		Div HQ	"	"
DX2	Mar 1 16	"	"	"
6X	Apr 17 16	2nd Cdn Div		
		6th Bde	"	Toronto
6X	May 27 16	"	"	Hamilton
6X	Jun 8 16	"	"	Montreal
9X	Jul 26 16	"	"	"
9X	Aug 25 16	"	"	Hamilton
9X	Sep 11 16	"	"	Montreal
DW2	Oct 4 16	2nd Cdn Div		
		Div HQ	1080	Hamilton
6W	Oct 20 16	2nd Cdn Div		
		6th Bde	1873	Toronto
HW	Nov 18 16	Cdn Corps	4139	Hamilton
6W	Dec 24 16	2nd Cdn Div		
		6th Bde	2378	"
184	Mar 1 17	"	"	Montreal



* this was the month and year when the 2nd Cdn Div arrived in France

The different Field Post Office hammers and the dates on which they were associated with the 2nd Canadian Division, 6th Brigade attest to the accuracy of the Crabb/Kennedy research which we have presented in earlier Newsletters.

Fifty one of the subject covers bear readable censor marks. Five could not be deciphered while five covers were from England and were not censored. Three were Honour envelopes of which one was censored by the Base censor and two were not censored.

Of the readable FPO cancels there were 28 from FPO 6X, 2 from FPO DX2, 5 from FPO 9X, 1 from FPO DW2, 8 from FPO 6W, 2 from FPO HW and 1 from FPO 184.

The censor number most frequently recorded was 1873 with accompanying signature of G.C. Easton.

The 6th Infantry Prigade comprised the 27th, 28th, 29th and 31st Battalions from Western Canada with a strength of 4518 Officers and men. They landed in England during the period 28 May-8 June 1915 and within 3 weeks were billited in Otterpool.

After training the Brigade arrived in France 17-18 September under the command of Lt. Col. H.D.B. Ketchen an Officer who had served for 7 years in the R.N.W.M.P.

319...Financial report

Treasurer Ken reports the following:

Nov '79	balance	\$ -2.36	May '80	#38 env & post	\$8.12
Mar '80	#37 env & post	\$7.71	Aug	#39 " "	7.86
Mar	dues	107.45	Sep	post & photo-copy paper	24.00
May	dues	17.88	Sep 15	balance	\$75.28

320...FIELD POST OFFICE Z



fig. 1
24mm

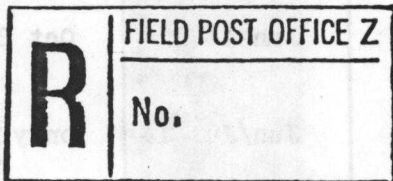


fig. 2
50mm x 22mm



fig. 3
31mm



fig. 4
24mm

Ritch Toop has sent along these photocopy/tracings originally taken from the Pritchard & Andrew proof book. These postal markings may not have been seen, "on active service"?

Whether these instruments were manufactured for FORCE Z, the garrison troops sent to Iceland, is a possibility. The Force was authorized May 22 1940 and arrived in Iceland June 16. The stamps could have been dispatched the following month.

We know now that mail from Canadian soldiers in Iceland dated in June and from the RCAF early in 1943 was cancelled by British Army and RAF cancellors.

The dates on the circular cancels above are the proofing dates while the Registration box was proofed on an unspecified date in June. Please note figures 1 and 4 which depict two different hammers as the inscriptions vary in the positioning of some of the letters.

Can study group members enlighten us further?

321...British datestamps - Canadian Army usage - World War One

Further to items 186, 195 and 197.

Two years have passed since the first of these items appeared in a Newsletter and the time has come to begin collecting reports from members to discover what we have collectively toward a complete collection of these most interesting military cancellations.

It is planned to include page returnable survey included in the above members indicate their Field Post Office datestamp for tabulation.



with the next Newsletter a one sheet listing all the cancels items with the request that holdings by circling the pertinent numbers and returning the sheet

We hope that item 318 in the current Newsletter will also serve as a forerunner to bring attention to this military mail exercise.

322...Circular datestamp - 3rd Canadian Infantry Brigade

Here's a Canadian Postal Corps marking not illustrated before. It was found on a facing slip for mail from overseas to Alberta. NL31 lists a series of these numbered from C1 to C12 inclusive and links them with the 12 C.I.Bs.

Please report any you have.



323...Canada Militia cancels - part 1 of 3

Camp name	Hammer number or other detail	Proof date of hammer	Earliest reported usage date	Latest reported usage date	Total number of reports
Niagara Ont.	The FPO No 1	Jun 14 09	strikes unknown	-	-
Niagara Ont	FPO No 1	Jun 16 09	Jun 18 09	Feb 1 19	76-80
Sussex NB	only hammer	Jun 2 11	Jun 22 11	Sep 28 18	26-30
Farnham Que	only hammer	Jun 3 11	Jun 17 11	Jun 20 13	8
Goderich Ont	only hammer	Jun 3 11	Jun 23 11	Jun 28 12 <i>jee</i> 26	12 13
Sewell Man	first hammer	Jun 3 11	Jun 14 11	Oct 29 15	36-40
Trois Rivieres Que	only hammer	Jun 3 11	Jun/Jul 14	only one strike report	
Barriefield Ont	first hammer	May 14 12	Jun 18 12	only one strike report	
Calgary Alta	only hammer	May 14 12	Jun 25 12	Oct 20 16	41-45
Levis Que	only hammer	May 14 12	Jun 9 13	Jun 6 18	10
London Ont	first hammer	Jun 18 13	Jun 19 13	Aug 9 18	51-55



A request was received for more, and updated, information on the Canada Militia cancels which were first introduced in NL18, item 80 and the tally in NL19, item 85, page 4.

We will do this in 3 parts and, to try something different, will use the proofing dates, where known, of the various hammers to decide the order in which the information is presented. The list will total 34 items in the light of present knowledge. Please note that hammers where no proofing date is known will be listed in part 3.

The data contained in the 3 parts comprising this item has been collected over a 9 year period hence the large number of reports in column 6. The actual number of reports for each cancel will be given up to and including 15 then the number will be, "bracketed".

The illustration of the only Sussex Camp hammer known shows the actual proofing date.

325...Canadian postal Corps overseas markings tally - WW2

Further to item 255. Sorry this introduction to 325 is out of sequence.

A year has gone by since this challenging group of cancels was first introduced. No doubt a considerable number of them have been collected by readers over this period but it is surprising that about 16 remain unreported.

The list of possible cancels has been increased by 10 since the first printing in our Newsletter and these are included in the tally. A "Mention in Dispatches" to those who reported their holdings.

See pages 6 and 7 for the tally and page 8 for illustrations of 4 of the 5 possible rubber hammers. Still need a picture of the rubber SC 10.

324. A well travelled World War One Registered cover



8 →
7 →
4 →
5 →

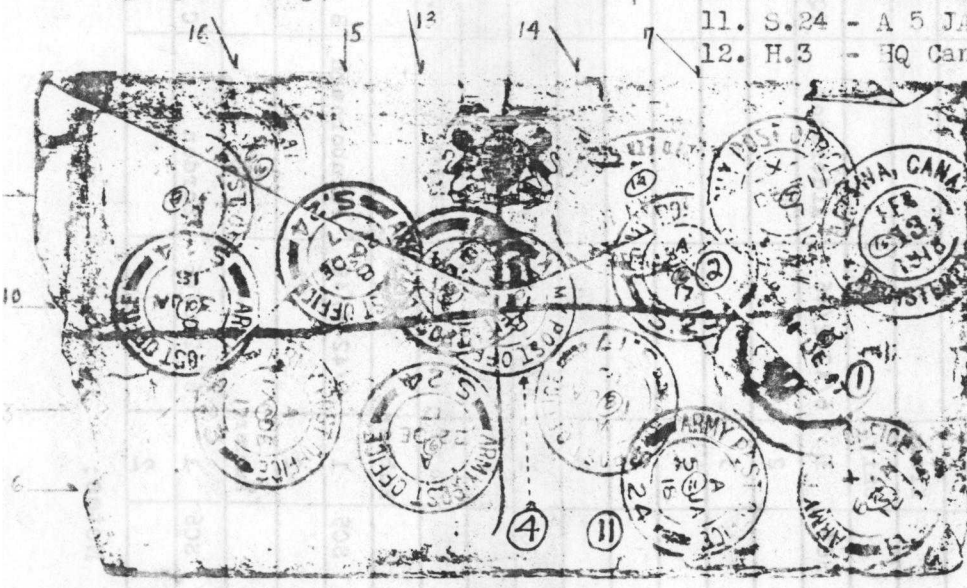
← 15 (CENTRE)
← 11
← 2

Mailed by J.W. Nicholls, on Imperial Munitions Board stationery, at Ottawa, NO 20 17, addressed to Private P. Nicholls, 201789, 4/5 Black Watch, B Corps. No. 5 Canadian Depot, B.E.F.

Franked by three - 3-cent Confederation stamps, to a total of nine cents, the letter must have been over weight, and paid at five cents for registration, two cents for the first ounce, one cent for the second ounce first class postage, plus the one cent war-tax.

There are several original and subsequent registration numbers on the face of the cover, plus a number of manuscript directions, as listed below. The numbers shown refer to the backstamps, and show when and where the markings were applied.

- | | |
|---|--|
| 2. Base Etaples 17/12/17 in red. | 1. London, England 11 DE 17 |
| 4. S.24 in red. | 2. S.23 - Cayeux Sur Somme, Depot 14 DE 17 |
| 5. Wounded - Hospital, in purple | 3. S.23 - A 17 DE 17 |
| 7. 24 Gen. Hosp. S.11, 22/12/17, in blue. | 4. S.17 - Etaples, Reinforcement Depot, B 19 DE 17 |
| 8. Unable to trace, 24 Gen., in pencil | 5. S.24 - Beaumaris, Pas de Calais, Army P.O. B 20 DE 17 |
| 9. S.24 in blue. | 6. S.24 - A 22 DE 17 |
| 11. Front, 5/1/18, in pencil. | 7. S.22 - Etaples, Canadian Depot, X DE 31 17 |
| 14. Ottawa, Can., in blue. | 8. S.17 - A 1 JA 18 |
| 15. Undelivered for reason stated (purple stamp). | 9. S.11 - Etaples, Main Office, 2 JA 18 |
| | 10. S.24 - B 3 JA 18 |
| | 11. S.24 - A 5 JA 18 |
| | 12. H.3 - HQ Canadian Corps, X 6 JA 18 |
| | 13. 151 - 118 Bde, 39 Brit. Div, 22 JA 18 |
| | 14. Returned Letter Section, London, (purple oval) 30 JAN 18 |
| | 15. Ottawa, Canada, Reg. (blue double corcle) 30 JAN 18 |
| | 16. Undecypherable Army P.O. |



Thanks to Bill Robinson for the item and to Wilf Whitehouse for the reductions.



CPC No.	Hammer No.	PERIOD OF USE	LOCATION	FORMATION/UNIT	SINGLE RING CDS	OTHER
SC7	1	6/42-6/46	London	CMHQ	8	
	2				9	
SC8	1	6/42-12/45	Nottingham	Army Pige.		
	2					
SC9	1		Colchester	Cdn Troops		
SC10	1	6/42-2/46	Farnham	Cdn 2nd Ech	3	
	Rubber				1	
SC11	1	6/42-2/46	Aldershot	D Grp Reinf.	8	
	2				7	
	3				9	
	Rubber				2	33mm
ARMY	Krag					Machine
ARMY	Krag					Machine
SC12	1	6/42-3/46	Cove	E Grp Reinf.	11	
	Rubber				1	33mm
SC751		10/44-4/45	N.W.Europe	LofC		
SC752		10/44-4/45	N.W.Europe	LofC	4	
SC753		10/44-4/45	N.W.Europe	LofC		
SC754		10/44-4/45	N.W.Europe	LofC	2	
SC755		10/44-1/46	N.W.Europe	HQ 1 CdnArmy	5	
SC756		10/44-2/46	N.W.Europe	1 Reinf Gp	6	
SC757		10/44-2/46	N.W.Europe	1 Reinf Gp	1	
SC758		10/44 - 2/46		1 Reinf Gp		
SC760		10/44-2/46	N.W.Europe	2 Reinf Gp	7	

CPC No.	Hammer No.	PERIOD OF USE	LOCATION	FORMATION/UNIT	SINGLE RING CDS	OTHER
SC1	1	6/42-1/46	Acton	HQ CPC		
	2				2	
	Krag					Machine
SC2	1	6/42-1/46	London	Cdn Overseas Postal Depot	2	
	2				2	
	3				1	
	5				3	
	6					
	Krag					Machine
	Univ.					Machine
SC3	1	6/42-2/46	Aldershot	HQ Reinf.U.	11	
	2				5	
	3					
	4					
	5					
	6				1	
SC4	1	6/42-6/46	Witley	A GrpReinf.U.		
	2				8	
	3		Witley	H.C. Reinf U.	1	
	Rubber				2	33mm
SC5	1	6/42-6/46	Farnborough	B Grp.Reinf.		
	2				8	
	Rubber				2	43mm
SC6	1	6/42-6/46	Bordon	C Grp.Reinf.	6	
	2				6	

Notes:

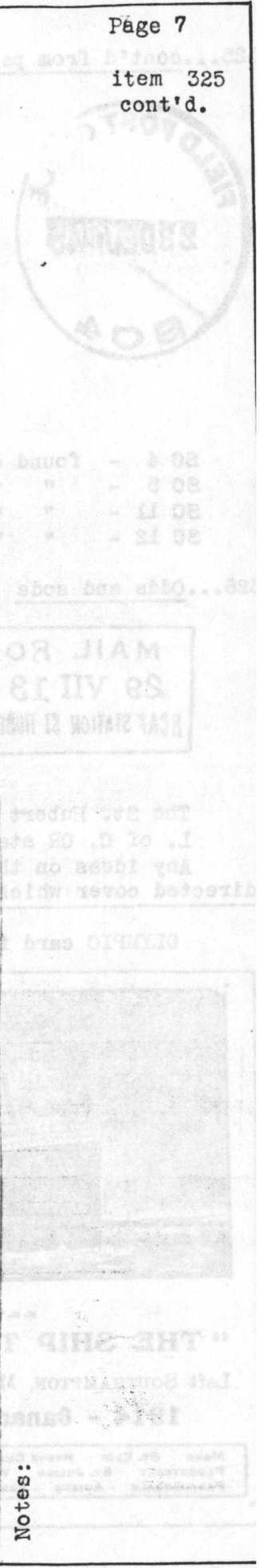
for machine cancels tally see NL30 item 208

item 325
cont'd.

CPC No.	Hammer No.	PERIOD OF USE	LOCATION	FORMATION/UNIT	SINGLE RING CDS	OTHER
TCL	1	6/42-6/45	England, Italy N.W. Europe	HQ 1 Div.		
TC2	1	6/42-10/45	Eng., NWEur.	HQ 2 Div.	9	
TC3	1	6/42-11/45	Eng., NWEur.	HQ 3 Div.	9	
DCA4	1	9/43-6/45	Eng., NWEur.	HQ 4 Div.	10	
DCA5	1	6/42-10/45	England, Italy N.W. Europe	HQ 5 Div.	7	
DCA6	1	11/43- 5/44	England	HQ 6 Div		
DCA7	1	11/43 - 9/44	"			
BTCL	1	6/42-2/44	England	1 Army Tkbde	8	
BTC3	1	6/42-2/44	England	3 Army Tkbde		
CAL		2/44-11/45	Eng., N.W.Eur	1 Armd Bde	3	
CA2	•	2/44-11/45	Eng., N.W.Eur	2 Armd Bde	7	

C.P.C No.	Hammer No.	PERIOD OF USE	LOCATION	FORMATION/UNIT	SINGLE RING CDS	OTHER
SC761		10/44-2/46	N.W. Europe	2 Reinf Gp		
SC762		10/44-2/46	N.W. Europe	2 Reinf Gp	1	
SC764		6/45-6/46	Holland	Occup. Force	4	Machine CAF 1
SC765	Univ.	6/45-6/46	Germany	Occup. Force		Machine CAF 2
SC766	Univ.	6/45-4/46	Germany	Occup. Force		Machine CAF 3
SC767	Univ.	6/45-4/46	Germany	Occup. Force		Machine CAF 4
SC769	Univ.	6/45-4/46	Germany	Occup. Force	1	Machine CAF 5
SC770	Univ.	6/45-4/46	Germany	Occup. Force		Machine CAF 6
I Cdn ABPO	Krag	10/44-1/46	N.W. Europe	Base PO		Machine
ACL	1	6/42-1/46	Eng., NWEur.	HQ 1CdnArmy	11	
HCL	1	6/42-6/45	Eng., NWEur.	HQ 1 Corps	8	
THCL	1	6/42-6/45	Eng., NWEur.	1 Corps Supply	10	
HC2	1	6/42-6/45	Eng., NWEur.	HQ 2 Corps	6	
THC2	1	6/42-6/45	Eng., NWEur.	2 Corps Supply	5	
THC. 2	double circle					44mm 32mm

Notes:



325...cont'd from pages 4, 6 and 7



REGISTRATION
BRANCH
SC 11

SC 12

- SC 4 - found on back of REGISTERED cover (1943)
- SC 5 - " " " " ARMED FORCES AIR LETTER
- SC 11 - " " " " REGISTERED cover (1945)
- SC 12 - " " " " ordinary cover from CRU Postal Unit

326...Odds and sods

MAIL ROOM
29 VII 13 VIII
RCAF STATION ST HUBERT, P. Q.



#1 N.E.T.D.
29 APR 1942
NS.

The St. Hubert Mail Room mark was used in 1958.
L. of C. OR stamp first we've seen.

Any ideas on the meaning of the abbreviation #1 N.E.T.D.? Is on front of re-directed cover which is also stamped, S.O.S. TO CANADA. Ron Kitchen asks.

OLYMPIC card from Ron Kitchen

Train card from Bill Robinson



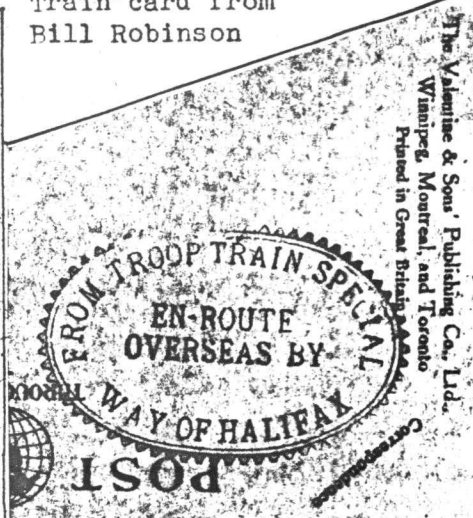
H.M.T. "OLYMPIC" LEAVING SOUTHAMPTON

"THE SHIP THAT BROUGHT ME HOME"

Left SOUTHAMPTON, May 10th; Arrived HALIFAX, May 16th, 1919

1914 - Canadian Expeditionary Force - 1918

MONS	ST. ELGI	NEUVE CHAPPELE	YPRES 2	FESTUBERT	GIVENCHY	LA BASSE	LOOS
PLUGSTREET	ST. JULIEN	YPRES 3	THE SOMME	COURCELETTE	VIMY RIDGE	HILL 70	
PASCHENDALE	AMIENS	ARRAS	CAMBRIA	VALENCIENNES	OCCUPATION OF MONS, NOV. 11		



FROM TROOP TRAIN SPECIAL
EN-ROUTE OVERSEAS BY
WAY OF HALIFAX
POST

The Valentine & Son's Publishing Co., Ltd.
Winnipeg, Montreal, and Toronto
Printed in Great Britain

CHEERS...

Sid, Ken & Colin.