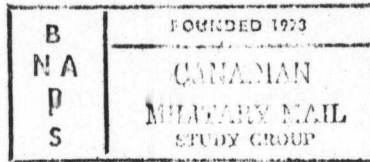


Happy New Year



30

January 18, 1979

Dear Member:

Two new members are welcomed to the Group both being long time **BNAPSers**;
Jack C. St. Laurent, RR1, Salmon Arm, B.C. VOE 2T0 and **David B. Crane**, 1367 Bing Ave.,
 Kelowna, B.C. V1Y 3Y5. We look forward to their association with our Group.

197...British datestamps - Canadian Army use in WW1

Further to Items 195 and 186.

With this item we complete the listing of British datestamps which has brought to our attention the considerable numbers to be searched out. Without doubt many will be most difficult to locate.

The 4th Division (green patch) was employed first at the Somme in November 1916. After this offensive it rejoined the Canadian Corps which had been formed in September 1915. In June 1917 General Sir Arthur Currie was given command of the Corps.

The 5th Division was formed about December 1916 with artillery only going to France in August 1917 the Division being broken up in February 1918 for reinforcement of the other divisions.

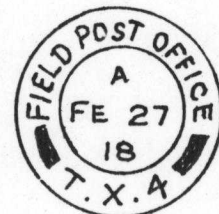
Other patch colours were:- 1st Division - red, 2nd Division - blue and 3rd Division - black (later grey). Ref: To SIEZE the Victory by John Swettenham, the Ryerson Press, Toronto, 1965.

4th Canadian Division

	<u>Div HQ</u>	<u>Div Train</u>	<u>10 Cdn Bde</u>	<u>11 C Bde</u>	<u>12 C Bde</u>	<u>Railhead</u>
Aug 1916 - Sep 1916	(DX4)	(TX4)	(10X)	(11X)	(12X)	RX4 (APO)
Oct 16 - Jan 17	(DW5?)	(TW5?)	(13W)	(14W)	(15W)	RX4
Feb 17 - Jun 17	D62	T62	188	(189)	190	RP4 (APO)
	(T1&D2)	(T1&D2)	(T1&D2)			(H1&D1)
Jun 17 - Feb 18	DP4	TP4	10P	11P	12P	RP4
Feb 18 - Jul 18	DZ	TZ	C10	C11	CPL	RP4
Aug 18 - Feb 19	(D21)	(T21)	175	169	168	
Feb 19 - May 19		TP4	10P	11P	12P	

5th Canadian Division (Artillery)

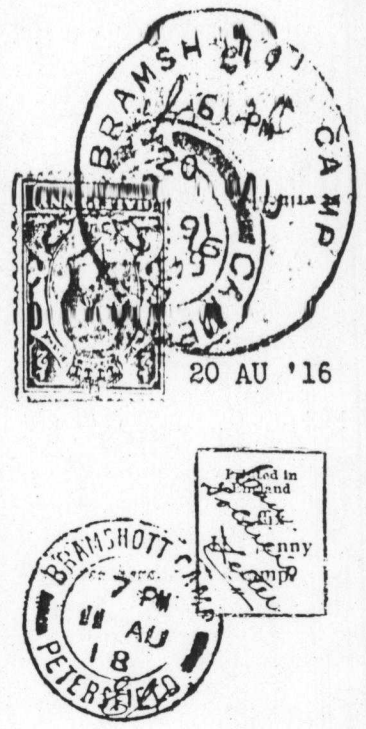
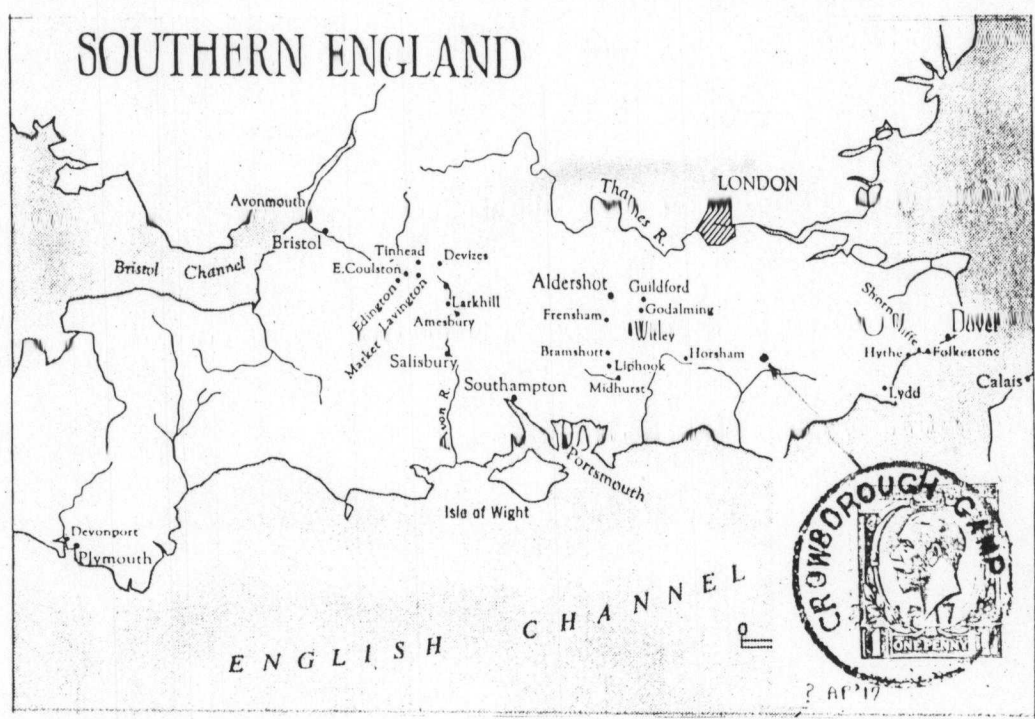
	<u>Div Train</u>
Oct 1917 - Feb 1918	TP5
Feb 18 - Jul 18	?
Aug 18 - Feb 19	(DC2?)
Feb 19 - May 19	TP5



198...Historic note - reference: List of Officers and Men serving in the First Canadian Contingent of the British Expeditionary Force, 1914. p. 7

<u>Divisional</u>	<u>Regl. No.</u>	<u>Rank.</u>	<u>Name.</u>	<u>Postal</u>
Headquarters	1827	Sergt.	G.W. Ross	
Subordinate	1820	Private	B.J. Terry	Corps
Staff	1829	"	G.H. Baldock	
	1830	"		

199... British camp datestamps used by the Canadian Army during World War One

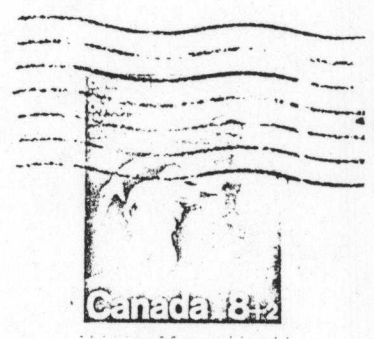


Prior to embarking for France Canadian troops first were to undergo training at a number of military camps in England. A great many covers and post cards exist today bearing postmarks from these camps and no doubt a number are in the possession of Group members. Readers will note some of the camp names from which some of these markings originated and an added list is shown below with a detailed listing to be featured in a future Newsletter. Other camps were: Seaford, Shoreham Camp, Witley, Dibgate, Sandling Camp, Kinmell Park Camp (Wales) and Ripon. The map is taken from, "The Gunners of Canada" by Colonel G.W.L. Nicholson, vol. 1 (1967)

200...Canadian Home Postal Depot - machine cancel



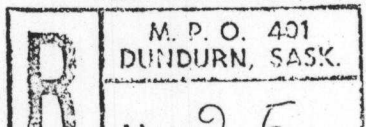
This type 3 is illustrated courtesy Bill Robinson and may be added to your survey sheet. The depot ceased operation Oct 30, 1975.



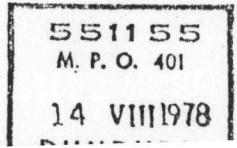
201...Canadian Navy Mail markings - additions

Wilf Whitehouse sends in two additions to Item 178 as follows: CF 44 HMCS PROVIDER (1972) and CF 7 HMCS NIPIGON

202...DUNDURN MPO 401 - additions



Bill Robinson sends photocopies to go along with one shown in Item 177. The type 8A POCON is quite a new one on the



203... Canadian World War One Internment Camp postmark



The postmark seen here was proofed AU 21 15 and we are indebted to Bill Robinson for this first report and supplying the photocopy from a proofing book.

Our request for information from Michael Squirell resulted in the following:

Castle Camp, Alta. Electoral District - Calgary
Postmaster - Major Duncan Stuart ref: Canada Official Postal Guide - 1916

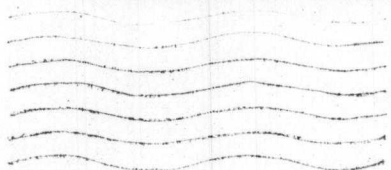
Another source provided this from the CRAG & CANYON - Banff, Alberta, June 19, 1915, Vol 16, #17. In part, quote: As a preliminary, it has been arranged to move anything up to 200 men to be placed on a suitable site on the auto road (near CPR siding) between Banff and Castle. This will necessitate a guard of approximately 60 men giving one guard to ten prisoners eight hours a day. The Superintendent (National Parks) was empowered to enrol, ... Enlistment began on Tuesday morning and 54 men from all over the Park were enrolled... under the usual Canadian Militia service conditions. Unquote. From Sessional Paper No. 25, quote: The total number of aliens at work in the parks at the end of the fiscal year was 800. Unquote.

Further information placed the closing of the camps in the parks as, "early in the summer of 1917". The parks referred to were Revelstoke, Yoho and Jasper. The internees were mainly of Austrian descent.

Finally, another reference lists this camp as:
Banff-Castle, Alta. - op 14 Jul 15 cl 15 Jul 17
Accommodation - Dominion Parks Bldg. at Banff
Tents at Castle

This brings to 12 the number of circular date stamps and censor markings from internment camps recorded in our Newsletters.
How long will it be until a cover is found bearing the Castle Camp,Alta. cancellation?

- 204...New early date - Canadian Contingent cachet see page 4
- 205...Seige of Ladysmith - souvenir post card do thanks to Wilf Whitehouse for doing the reductions
- 206...Canadian FPO cancellations used in Korea and Japan - 1950-1955 see page 5 and merci beaucoup to Bill Robinson for most of the work on this. See also Maple Leaves article of December 1959 by R.H. Webb.
- 207...Historical postal/military letter - 1812 see page 6
- 208...Military machine cancels survey result - further to our item 194. See page 7.
- 209...Type 3 machine - first report



Ian Morgan earned the credit for this one used as a receiver's strike. See also number 2 on page 4 Newsletter #27. A trifle faint but the numeral 3 is very clear.

210...Fill in the missing word?

Further to Item 180. Perhaps this may throw some light on the abbreviation W.D.C.S? Fill in the missing word..WAR CONTROL STATION.

211...Reference books recommended

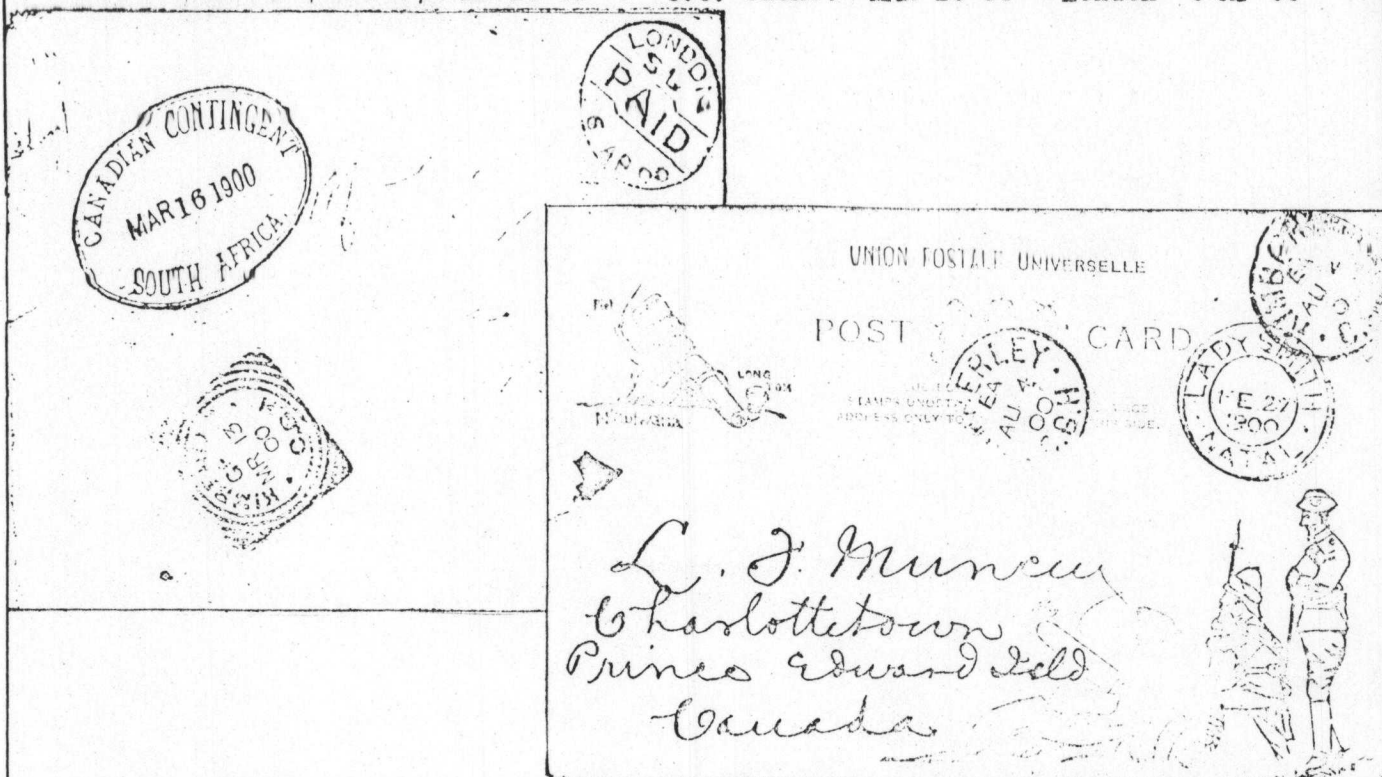
Canadian and American servicemen will find this an enlightening and dramatic account of a little known segment of World War Two. No mention of postal services but it makes the postal markings that came from this campaign all the more significant. Titled: The 1000 Mile War (World War 2 in Alaska and the Aleutians) by Brian Garfield. ISBN 0-345-27607-8 fifth printing May 1978 pocketbook edition about \$2.25.

...204 New early date - Canadian Contingent cachet - size reduced

We are fortunate that one of our Western Canada readers has supplied a photocopy of his fine cover with the early cachet usage date. It was applied in red ink and is four days earlier than previously reported usage date.

At upper left is the written inscription, "No stamps available - Active Service". The cover was mailed to a Sussex, New Brunswick address. Note the sequence of dates:

Kimberley (C.G.H.) MR 13 00 G.C. cachet MAR 16 00 London 6 AP 00



...205 The siege of Ladysmith - a souvenir post card - size reduced

During the Anglo-Boer War the towns of Ladysmith and Kimberley were placed under siege almost simultaneously by the Boers, from October 1899 to February 1900, the latter beginning and ending two weeks before the former.

The townspeople and garrison of Ladysmith were subjected to almost continuous bombardment from Boer heavy guns during the siege but remarkably few casualties or damage to property was sustained. Shelling ceased during the dark hours and on Sundays. On February 28, 1900 the siege of Ladysmith was lifted and on March 3 General Sir Redvers Buller's army made its formal entrance into the town.

The post card shown here apparently was printed during the siege as it bears the inscription, quote:

Subject to letter rates

Stamps unobtainable during the siege

Address only to be written on this side. unquote

Note the Ladysmith postmark dated one day prior to the ending of the siege.

Presumably the card was then carried to Kimberley where a Cape of Good Hope stamp was added and two Kimberley cancellations struck on AU 4 00. A receiver's mark of Charlottetown on the reverse is dated SP 4 00 attesting to its arrival in Prince Edward Island.

The illustrations on both faces of the card refer to the bombardment described above.

...206 Canadian FPO cancellations used in Korea and Japan 1950 - 1955

CFPO No.	PERIOD OF USE	LOCATION	CANCELLATION TYPES						Other (Specify)
			1B	1C	4F	4G	5B	8B	
25	18 Nov 50 30 Nov 54	Pusan, Seoul, Tochong							
26	20 Apr 51 31 Jan 52	Pusan							
	8 Feb 52 22 Jun 52	Nippombara							
	23 Jul 52 15 Nov 54	Kure (J)							
27	18 May 51 10 Mar 54	Yongson							
	15 Apr 54 15 Sep 55	Seoul							
28	7 May 51 7 Feb 55	Kure (J)							
29	7 May 51 20 Jun 55	Hiro (J)							
30	13 Oct 51 10 Apr 54	Tochong							
	16 Apr 54 15 Aug 54	Yongson							
31	16 Apr 52 16 Apr 55	Tokyo (J)							
32	24 Sep 53 30 Mar 54	Kobe (J)							
5000	12 May 51 12 Sep 55	Kure (J)							
5001	15 Jan 51 15 Sep 55	Tokyo (J)							
5002	18 Nov 50 26 May 51	Pusan							
5003	7 May 51 7 Feb 55	Kure (J)							
	20 Feb 55 20 Jun 55	Hiro (J)							

MEMORY REFRESHER - CANCELLATION TYPES

- Type 1B - M.P.O.No. only - at 6 O'Clock, steel cds.
- 1C - M.P.O.No. only - at 12 O'Clock, steel cds.
- .4F - M.P.O.No. only - large rubber cds.
- 4G - M.P.O.No. only - Oblong "R" registration box.
- 5B - M.P.O.No. only - Roller.
- 8B - M.P.O.No. only - Square boxed MOTO.



...207 Historical postal/military letter - 1812

Adjutant General's Office
 Hd Qr Montreal, 29th October 1812.

General Orders.

In consideration of the extra duty of the Post
 Master of Montreal in forwarding Letters to the Troops in
 Camp and the Cordon of the Frontiers, Daniel Sutherland
 Esq is appointed Military PostMaster at Five Shillings
 Currency per Day, with Subaltern's Barrack allowance
 of Fuel and Candles 'till further Orders - to commence
 on the 25th of August.

Signed, Edward Baynes
 Adj. Genl.
 N. A.

transcript:

Adjutant General's Office
Hd Qr Montreal, 29th October 1812.

General Orders.

In consideration of the extra duty of the Post
 Master of Montreal in forwarding Letters to the Troops in
 Camp and the Cordon of the Frontiers, Daniel Sutherland
 Esq is appointed Military PostMaster at Five Shillings
 Currency per Day, with Subaltern's Barrack allowance
 of Fuel and Candles 'till further Orders - to commence
 on the 25th of August.

Signed, Edward Baynes
 Adj. Genl.
 N.A.

Our thanks to the reader sending the photocopy of the a/n letter and we reproduce it here together with a transcript. Daniel Sutherland's appointment lasted until December, 1815. It is believed that the "Cordon of the Frontiers" took in the geographical areas including Chambly, St. Johns and Isle aux Noix.

What an interesting field of study this letter poses to a member of our study group. Do we have a volunteer?

...208 MILITARY MACHINE CANCELS SURVEY RESULT

DUES PAID yes no

NOTE: THE MAJORITY OF ITEMS REPORTED ARE ON COVER.

type	have cps	c-cover	p-piece	s-stamp/s	earliest	latest	have e. cps
type 3B							
N.P.O. No 617	6						8
CFPO 106	2						3
CFPO 107	3						1
CFPO 108	5						2
CFPO 5056	1						3
type 3 B/C							
C.F.P.O. 5000	4						4
B.P.F.C. 5000							
C.F.P.O. 5056	5						5
B.P.F.C. 5056							
type 3C							
M.P.O. 304 CANADA	4						4
N.P.O. 618 N.S. -e- -e-	7						7
type 3D							
CANADIAN OVERSEAS (SC2) P.D.	9						9
Krag							
ARMY POST OFFICE S.C.1.	6						6
ARMY POST OFFICE S.C.2.	8						8
ARMY POST OFFICE -SC 11.-	6						6
ARMY ARMY POST OFFICE SC 11.-	7						7
1 CANADIAN A.B.P.O.	1						1
civil							
BORDEN ONTARIO							
CORNWALLIS N.S.							
GREENWOOD N.S.							
LAZO B.C.							
MEDLEY ALBERTA							
MEDLEY ALTA.							
OROMOCTO N.B.							
PETAWAWA ONT.							
COURCELETTE P.Q.							

* NOTE: Post Industry - Count 100. Post Office From which THE CANCEL SET IS COME

type	have cps	c-cover	p-piece	s-stamp/s	earliest	latest	have e. cps
type 3A							
BORDEN, ONT. 1916	5				JUN 20	AUG 3	5
BORDEN ONTARIO -1916-	2				AUG 30	OCT 17	2
BORDEN, ONTARIO FIELD POST OFFICE	2				AUG 3/16	OCT 7/17	2
BORDER CAMP QUE. FIELD POST OFFICE	2				505/16		2
TO ONT. FIELD POST OFFICE	1				JAN 17/16		1
ARA CAMP ONTARIO FIELD POST OFFICE	1						1
type 3A							
BORDEN, ONT.	9						9
M.P.O. 202							
M.P.O. 203 ONTARIO	6						6
M.P.O. 302 ONTARIO	4						4
M.P.O. 303	8						8
M.P.O. 305	8						8
M.P.O. 318 ONT.	1						1
M.P.O. 603	0						0
MONTREAL P.Q.	0						0
MONTREAL P.Q.	0						0
M.P.O. 201	3						3