



# THE KLUSSENDORFER

Newsletter of the BNAPS Canadian Klussendorf Study Group

Coordinator: Allan L. Steinhart, 45 Dunfield Ave., Apt. 1910, Toronto, Ont.

M4S 2H3. Phone: 416-486-6480.

Deputy Coordinator: Greig Hutton, 1227 Cambridge Cres., Sarnia, Ont. N7S 3W5.

Editor: Gray Scrimgeour, 227 Hanna Rd., Toronto, Ont. M4G 3P3.

Issue Number 7

December 1989

BNAPEX '89 was a great success!! Six more K collectors joined our study group at the convention. And 25 attended our meeting (see the next page for a short report).

During preparation of this newsletter, my new computer arrived (a Macintosh SE). The C64 has done fine, but I'll be able to do typesetting with a laser printer, rather than just typing. I hope it makes future Klussendorfers look nicer. It will eventually make my word processing easier to do. (kgs)

## ITS DUES TIME AGAIN!

Some of you have already paid your dues for 1990, that cover the Nov./Dec. 1989 issue to the end of October 1990. Those of you who haven't paid should send in your \$10.00, the same dues as last year. Thanks. (A financial statement for our first year appears on p. 136; ed.)

EXTRA! EXTRA! EXTRA! The latest news.

## CORUNNA, ON

A RED cancel is being used at CORUNNA, from December 1, 1989 until Christmas, in the Klussendorf machine. Watch for this one!

## QUALICUM BEACH, BC new K town

Greig Hutton reports that the Klussendorf here is now in service with an EKU of November 23, 1989 and timemark blank. Another to watch for! Pictures next issue.

## FIGHT LUNG DISEASE slogans for 1989.

Lots of changes this year. Several new towns. See Dan Hunka's report on p. 125 for the first news, and the summary on p. 136 for all the latest.

HOLIDAY GREETINGS. With issue #7 you will find a SIDNEY, BC K cover. This machine is being phased out of service. All mail is bagged to go to the sorting plant at Victoria. Even favour philatelic covers are being refused. Through the courtesy of the PM after a phone call, our group was able to get 50 covers serviced - one for each member. (Sorry, not enough for the 5 BNAPS execs - we got 8 new members.)

The best of the Season, from Gray, Greig, and myself.

## The Klussendorfer

### REPORT OF THE MEETING AT BNAPEX.

Membership is up to almost 50 for the study group. About half of the members were in attendance at the meeting. Allan Steinhart was chairman. First order of business was a round of introductions. Next, the officers were reappointed for 1989-90. A general discussion followed, with some Klussendorf examples passed around.

Jim Karr asked about the desirability of saving cut squares vs. full covers, and how the squares should be cut and mounted. The cut squares are convenient, but the covers undoubtedly are worth more. Covers retain value (if there is much to an ordinary Klussendorf cover; there certainly is recognized value in scarce towns and timemarks). A collection of K covers becomes quite bulky, though. The standard size of a cut square has always been considered to be about 2" by 4" (about 40-50 mm by 80-100 mm). The decision of how to save and mount Ks is a personal choice. George Sangster, for example, started with cut squares, but has changed to covers. I always try to obtain tidy strikes on covers without bars, but have some covers with bars and some cut squares.

Some recent K errors were mentioned. DRUMHELLER, AB had an error of 12 X 1989 for IX. Wally Gutzman said that he had seen a third QUEBEC #1 cover, used at ST. FELICIEN. Claude Gignac said that some towns near Quebec City (such as GRAND'MERE) will have their mail sent to a regional sorting plant within a month, so we'll probably not see their Klussendorf cancels any more. A similar plan is being followed in Eastern Ontario, with mail being sent to Ottawa. Bill Robinson said he'd recorded CRESTON, BC on 2 VIII 1989 1 with POSTAL CODE rather than the slogan. Bill has also seen a town in BC with a blank name, much like the LATUQUE, PQ occurrence. It may be HOPE, but it still hasn't been identified.

Several question raised were:

1. When QUEBEC #2 is found inverted, why is it always the same position (#3) that is inverted?
2. Why are strikes from LANGLEY and ABBOTSFORD so rare? Both had too much mail for the Klussendorf machine, so were given IPS machines. Bill Robinson said he felt that the K machine was used at LANGLEY only for bulk mailings.
3. How many strikes of the SHERBROOKE slogan are known? So far, 4.
4. What year dates are possible on the Klussendorf hub? It was thought that the span 1980 to 2019 was possible. Greig Hutton will check on this, and on possible timemarks, and report to us in the Klussendorfer.

Members have since expressed their pleasure at the exchange of information at the meeting. I wish it could be a more frequent happening! We'll have to get by with the Klussendorfer, and with meetings at regional philatelic meetings.

### JIM KARR'S REPORT FROM ALBERTA.

ROCKY MOUNTAIN HOUSE, AB has changed from timemark . to a BLANK. On 06 IX 1989, it was the period, but on 07 IX 1989 it went to blank.

Jim sends a copy of 1 X 1989.1 from OLDS, AB. This is a Sunday date, and Sundays from small towns are rare.

A rather strange ERROR occurred at SPRUCE GROVE, AB. The date on the hub reads 01 IX 1988-09. Jim is not certain just what the mail clerk meant the date to be. It would appear that the error occurred when the dater wheels were changed from September to October. However, October 1st was a Sunday, with no mail clearance. The first day of mail clearance would have been October 2nd. In his batch of covers, there were a dozen or so with the error but only two that were dated 02 X 1989.00. See the ALBERTA illustrations on the next page.



# The Klussendorfer

## ALBERTA EXAMPLES.

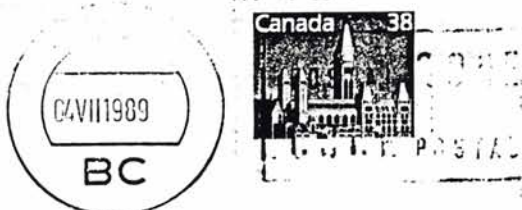


## BC NUDES.

No, this isn't about Wreck Beach. Bill Robinson mentioned a recent underinking problem at a BC town that resulted in a nude strike of the town name. My guess is MISSION, BC. I have a cover from MISSION with no town name, dated 0? VIII 1989. . Something else happened at MISSION, though. I have a weak strike where you can read M and ON, with date 01 VIII 1989. with the 1 of the day being an albino. I also have a well-inked 1 VIII 1989. (note that the day is 1, not 01). On 08 VIII 1989. the MISSION was quite legible. My guess is that with the underinked dates could be errors, with the clerks not being able to read the dates. These 4 strikes are shown below, in the order they were discussed.



NELSON is another possibility for the nude BC town, but Bill felt it was in the Fraser Valley. I have a near-nude NELSON dated 04 VII 1989 (shown below).



# The Klussendorfer

## DAY VARIATIONS.

The use of both 1 and 01 at MISSION (last page) - possibly on the same day - got me looking for variations in the way the day is entered on Klussendorfs. For example, DRAYTON VALLEY had 06 VI, but 2 VIII (the 0 preceeding the day in June, but not in August). GATINEAU was similar, with 08 VIII but 4 VII.



POWELL RIVER used 01 VIII, but 3 VII (the 3 was far to the left).

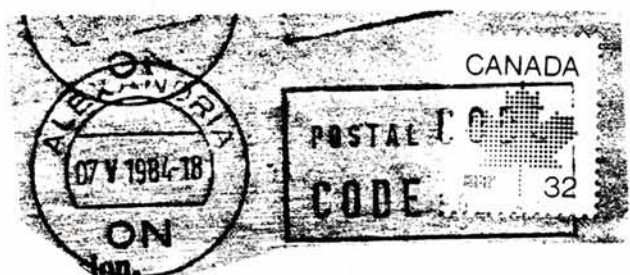
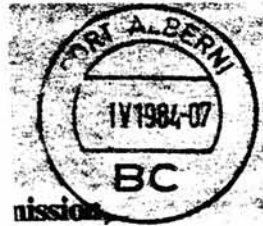
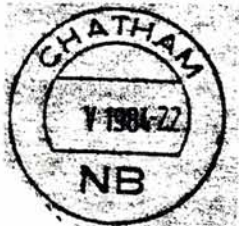


CAMPBELL RIVER had 3 VII (far to the left), but 4 VII the next day, and 08 VIII a month later. Lots of examples can be found of this variation in the use of the zero and the spacing, and they can all signify the correct date.



## CHATHAM, NB and PORT ALBERNI, BC

Here are two more reports of the possible use of the day in the timemark slot, with the day slot blank: CHATHAM, NB with BL V 1984-22 and PORT ALBERNI, BC BL IV 1984-07. Is it possible that the timemarks 01 or 03 reported for CHATHAM and 09, 16 and 28 reported for PORT ALBERNI are really days in the timemark slot, also? We need clarification of these previous reports.



ALEXANDRIA, ON - Here is another report with the rarer POSTAL CODE in the early period (07 V 1984-18).

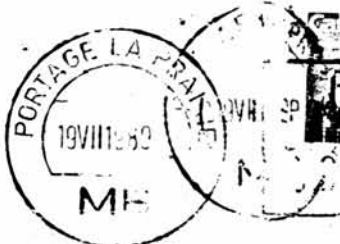


# The Klussendorfer

## MANITOBA REPORT

New member Theo Gordon reports some errors and other interesting items from Manitoba.

ALTONA, MB	36 matched pairs (18 I 1989 to 13 X 1989)
DAUPHIN, MB	13 IX 1989-24 (I have TM-18 the same day) and -24 on 15 IX
DAUPHIN, MB	12 X 1988-07,-18 matched pair
PORTAGE LA PRAIRIE, MB	31 X 1988= LKU POSTAL CODE before slogan
PORTAGE LA PRAIRIE, MB	A lot of Klussendorf covers on the same day with doubling and not doubled (below).
STEINBACH, MB	05 VII 1990=1 (error for 1989)
STEINBACH, MB	31 VI 1988. (error for VII 1989)
STEINBACH, MB	05 VIII 1988. (error for 1989)
THE PAS, MB	21 III 1989 -08,-18 matched pair
THE PAS, MB	22 VIII 1989 -08,-18 matched pair
THOMPSON, MB	17 V 1988-17 (error for 1989)



Expanding on the STEINBACH errors, the 31 VI 1988. date (June 31) is an impossible date. There is also the year error of 1988 for 1989. The date should be 31 VII 1989. The error was partially corrected August 1, with the cancel reading 1 VIII 1988. until 4 VIII 1988. On 05 VIII 1989. the year error was corrected.



SMITHS FALLS, ON. An impossible date error has been reported: 33 VIII 1989= which probably should be 23 VIII.

FW reads these headings!

THOMPSON, MB - invert.

Robert Meek has sent in a report of a new invert, at THOMPSON, MB on 14 X 1989-18.

He also sent in these comments on Klussendorfer #6 items:

DELHI invert (p. 83) - 4th invert; March and November 1988 and March 1989.

RIVIERE DU LOUP, PQ (p. 89) - confirms the EKU of 27 II 1984.

- timemark of period 22 I 1987 to 22 XII 1987 BLANK and not .

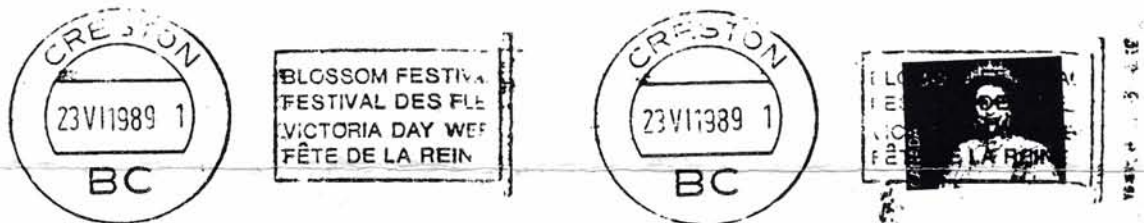
ESTEVA, SK - odd use of black ink only; September and October showed part black and part violet, but 26 X 1989 is totally black.

CARAQUET, NB - presumably a date of 10 II 1989 BL appears as 10 /1 1989 (appears to be a shilling mark, but not seen since).

ST. BRUNO, PQ 1 VI 1988; SIMCOE, ON 05 VII 1988-18; CARAQUET, NB 16 III 1989 BL : all 3 show a second strike of the POSTAL CODE slug but without a matching dater strike. Perhaps another envelope overlapped and received the first dater, so the operator put the envelope through again to obtain a date.

#### BC REPORT

Brian Plain sends in some photocopies, including this nice pair of strikes of the CRESTON slogan that were on a #10 envelope:



Brian also reports:

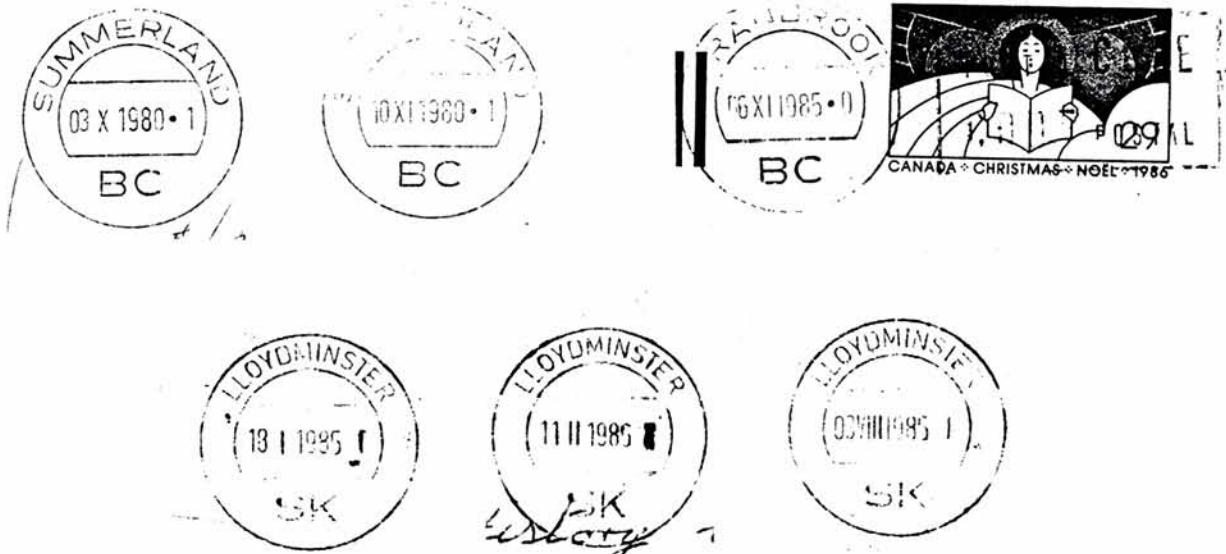
WESTBANK, BC	26 VI 1990-2 (from Fred Kraemer) 38-cent rate
WESTBANK, BC	2 covers in same batch (tri-weekly sort) one without dater (possibly overlapping envelopes?)
REVELSTOKE, BC	2 strikes with timemark BL and TM -17 dated 03 VIII 1989 BL and 25 VIII 1989-17 (other reports 14 VIII 1989 BL and 22 VIII 1989-17)
SUMMERLAND, BC	10 XI 1980.1 error; should be 10 ? 1989.1
SUMMERLAND, BC	03 X 1980.1 error; should be 03 ? 1989.1
CRANBROOK, BC	06 XI 1985.0 error; should be 1986
LLOYDMINSTER, SK	Some strikes with what appears to be timemark 1 but is probably the end of the roll.





Do you read the headings?

Here are the rest of Brian's illustrations:



At the BRANTFORD STAMP CLUB, member Robert Meek gave an interesting and informative talk on the Klussendorf postmarking system.

#### CHRISTMAS TB SLOGAN AT PRINCE RUPERT.

Dan Hunka reports that the Christmas TB slogan was used 24 X 1989. at PRINCE RUPERT, BC. This is a new town for this slogan, and an early use. More elsewhere in this issue on Christmas slogans.

Dan also reports:

ST. BRUNO, PQ

12 IV 1989.

12 IV 1989.9

12 IV 1988.0 (error for 1989)

- all of the above ST. BRUNO strikes are from the SAME DAY.

GRAND FALLS, NB 25 IX 1985-17 LKU

GRAND FALLS-GRAND SAULT, NB 15 X 1985-14 EKU

And the following all from GRAND FALLS-GRAND SAULT, NB:

02 VIII 1988-16

05 VIII 1988-16

10 VIII 1988-17

16 IX 1988-17 error for XI

30 VIII 1987-26 error for 30 XI 1988

01 XII 1988-17

LABRADOR CITY, LB 18 IV 1984-13 EKU

DORION-VAUDREUIL, PQ 19 XI 1984 Pitney Bowes

20 XI 1984-21 EKU

20 XI 1984-22 EKU

#### KENTVILLE, NS IPS

Dave Hanes has reported the use of an IPS cancel on 29 IX 1989. A call to the postmaster revealed that a "mock-up IPS machine" was in operation at KENTVILLE for a period of 6 to 7 weeks. The Klussendorf machine is still there and supposedly in use. At the end of this period, a report will be submitted. What the future holds for the KENTVILLE Klussendorf at this time is unclear. Watch this one. It could go anytime.

Do you read the Klussendorfer?

# SOME PRETTY STRIKES.

Dave Hanes has sent in some reports of interest, illustrated below.

EXETER, ON invert	08 VIII 1989-18	
BOLTON, ON	17 IX 1989-17 error for 19 VII 1989-17	
DIGBY, NS	12 VIII 1989.1	
PARRY SOUND, ON	21 VIII 1989-16	NEW TM'S
SACKVILLE, NB	24 IV 1989-29	
ROUYN-NORANDA, PQ	31 VII 1989=	



Dave also reports a special delivery cover from HANOVER with a Klussendorf cancel 1 VI 1989-19 and a registered cover from KIRKLAND LAKE dated 13 VII 1989. both of which are very unusual. They are shown on the next page.

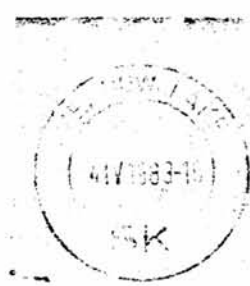
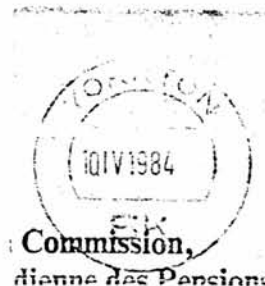
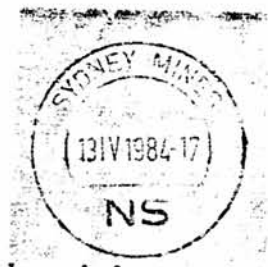
## ERRORS

Wally Gutzman reports the following errors:

LIVERPOOL, NS	26 VIII 1980-21 for 1989
OROMOCTO, NB	04 VIII 1990-08 for 1989
OROMOCTO, NB	10 XI 1990-07 for 1989
STE. ADELE, PQ	29 VIII 1980-17 FOR 1989
VAL D'OR, PQ	17 VIII 1990.1 for 1989

Wally sends in this information, also:

EDSON, AB	05 I 1984 BL	New EKU
SYDNEY MINES, NS	13 IV 1984-17	EKU
YORKTON, SK	10 IV 1984	EKU
MEADOW LAKE, SK	4 IV 1983-16	Error for ? (32-cent stamp, so presumably 1984).

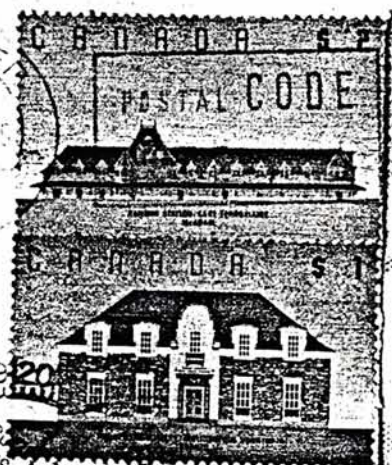




Special Delivery Express

SPECIAL DELIVERY  
LIVRAISON PAR EXPRES  
1 VI 1989

HANOVER  
1 VI 1989  
CN



Special Delivery Express

Provincial Court  
Fine Payment  
14 Front St N.  
PO Box 218  
Orillia Ont  
L3V 6J3

DELIVERY  
REMISE PAR EXPRES  
JUN 1 1989  
KITCHENER, ONT.



RECOMMANDE

KIRKLAND LAKE

KIRKLAND LAKE  
1989  
JUL 13  
VII  
ONTARIO

The Provincial Court  
Court House  
30 Poyntz St.  
PO Box 289  
Barrie Ont  
L4M 5L4

EXPRESS MAIL  
CARTE EXPRES  
JUL 16 1989  
FROM: NOTED  
TO: NOTED  
BY: NOTED  
RECEIVED BY: NOTED

611

Do you just look at the pictures?

More newws from Wally:

ROUYN-NORANDA, PQ	01 VIII 1989=	New timemark
LOUISEVILLE, PQ	4 VIII 1989-26	New timemark
LA TUQUE, PQ	29 VIII 1989	Still with town blank
ATIKOKAN, ON	22 VII 1989-17	timemark
CAMPBELLTON, NB	13 IX 1989.1	timemark
COATICOOK, PQ	19 VII 1989=	timemark
MACKENZIE, BC	23 III 1989=1	timemark
MORDEN, MB	09 VI 1989-17	timemark
WATERLOO, PQ	06 IX 1989 0	timemark
STE. JULIE DE VERCHERES, PQ	13 to 24 VIII 1980=1	error for VII 1989

ERRORS and EKUs

New member J. Ross Elliot - 1313 Firestone Cr., Ottawa, Ontario, K2C 3E4 - has sent in these reports:

LA BAIE, PQ (p. 2) Normal to 10 II 1987; error 16 II 1986 and 19 II 1986.

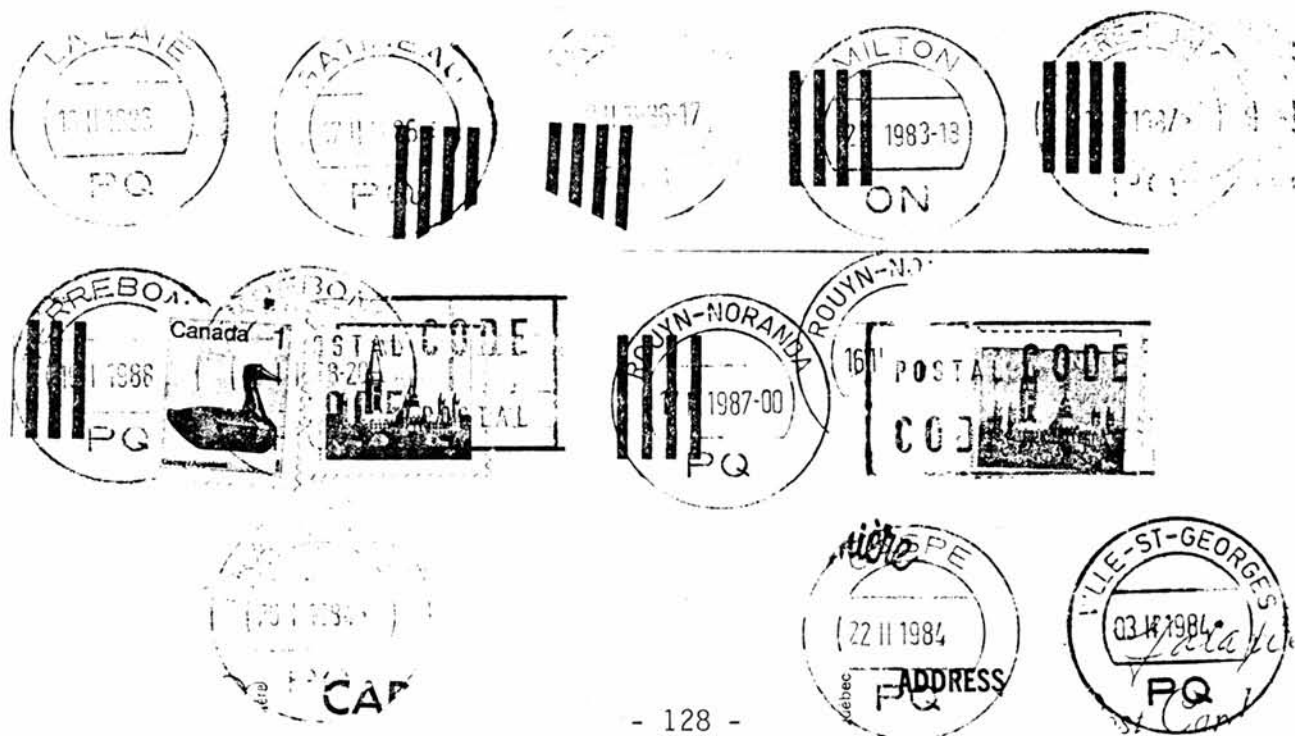
Ross has duplicates of these errors that he would trade for other dates of the error.

GATINEAU, PQ	Normal 14 II 1987 Saturday
	16 II 1986
	17 II 1986

Again, some duplicates for trade.

TRACADIE, NB -05 II 1986-17 error for 1987 on Scott #1118 issued Nov. 21, 1988.

MILTON, ON	09 & 10 II 1986-17 error for 1987
RIVIERE DU LOUP, PQ	2 II 1983-18 (goes with report of 3 II 1983) error
TERREBONNE, PQ	Klussendorf 16 II 1987 and meter error of -9 II '84
strike 20 I 1988-20	19 I 1988-20 Short paid -1 cent added and second
ROUYN-NORANDA, PQ	Partial 16 II ? and 17 II 1987-00 same cover
GRAND MERE, PQ	26 I 1984 BL Eku confirmation
GASPE, PQ	22 II 1984 BL support for 21 II 1984 Eku
VILLE ST. GEORGES, PQ	03 II 1984. Eku confirmed





# The Klussendorfer Lists

ALEXANDRIA, ON	07 V 1984-18	No slogan; POSTAL CODE
ALEXANDRIA, ON	30 IV & 02 V 1999-19	Error for 1988
AMHERST, NS	01 VI 1988-2	Slogan; error for 01 VII 1989-2
AMHERST, NS	13-18 VI 1988-2	Slogan; error for VII 1989-2
ANTIGONISH, NS	07-20 VI 2018-17	error for 1989; extend period
AYLMER WEST, ON	17-19 VII 1988-17	error for 1989
BAIE COMEAU, PQ	15-18 VIII 1980=	error for VII 1989=; extend period
BEAMSVILLE, ON	13 IX 1987-17	New timemark
BELOEIL, PQ	37 II 1987-18	should be 27 II; POCON 27 II 1987
same cover		
BELOEIL, PQ	04-31 VI 1989 8	error for VII 1989; extend period
BELOEIL, PQ	11 VIII 1989-18	timemark change from 8
BURNS LAKE, BC	04-26 VI 1989.	error for VII
BOWMANVILLE, ON	16 IX 1990-09	error for 16 VIII 1989-09
BOWMANVILLE, ON	17 VIII 1989-09	corrected
CAMROSE, AB	10 V 1984 0	scarce timemark
CAMPBELLFORD, ON	17 VI, 22 VII, 5 VIII 1989-16	timemark errors
(Saturdays); should be	TM-11	
CASTLEGAR, BC	15 XII 1983.0	new ECU; also 16 XII 1983.0
reported		
CHAMBLY, PQ	12 I 1984-19	ECU confirmed
CHANNEL-P.A.B., NF	4 VIII 1989-11	new timemark
CHANNEL-P.A.B., NF	19 VII 1989-11,-18; 12 VII 1989-10,18;	
11 VII 1989-10,-18; 28 VII 1989-11,-18	matched pairs	
CHATHAM, NB	BL V 1984-22	day in TM slot - new timemark -22?
CLARENVILLE, NF	14 VII 1989-20, 4	matched pair
CORNER BROOK, NF	27 VI 1989-18,-22	matched pair
DAUPHIN, MB	14 III 1984-19,-23	matched pair
DEER LAKE, NF	15 V 1984-21	ECU confirmation
EDSON, AB	05 I 1984 BL	New ECU
ELMIRA, ON	1 VII 1989-12	error for 1 VIII 1989-12
ELMIRA, ON	10 VIII 1989-06,-12,-18	matched set
ELMIRA, ON	21 VIII 1989-13	second report of timemark 13
ESTEVAN, SK	Mid-August	black and purple used
EXETER, ON	01-09 VIII 1989-17	inverts
GODERICH, ON	19 I 1984 -07,-18	matched pair
GODERICH, ON	35 VII 1989-17	error for 25 VII 1989
GOLDEN, BC	04 VII 1988=	error for 04 VIII 1989=
HIGH RIVER, AB	27-31 VI 1988=0	error for VII; extend period
HUMBOLDT, SK	9 IV 1984-17	ERU new
KEMPTVILLE, ON	20 VI 1989-17	error for VII 1989
KEMPTVILLE, ON	21 VIII 1989-12	error; timemark -12 only Saturday;
21 VIII is Monday.		
LAC MEGANTIC, PQ	17 IV 1984 BL	ERU confirmation
L'ASSOMPTION, PQ	09-25 IX 1989-09	error for VIII 1989
LIVERPOOL, NS	24 VIII 1980-21	error for VII 1989-21
MAGOG, PQ	29 XI 1983=	scarce timemark
MANIWAKI, PQ	26 VI 1989-09	timemark error for -17 Monday
or -09 Saturday only		
MEADOW LAKE, SK	04 IV 1983-16	error for 1984
MEAFORD, ON	34 VIII 1989-17	error for 24 VIII
MELFORT, SK	20 III 1983-00	error for 1984; new timemark.
MELVILLE, SK	11 V 1984 BL	an early report
MONT JOLI, PQ	05-17 VI 1988 BL	error for 1989; extend period

# The Klussendorfer

NAPANEE, ON	16 VIII 1989-13	first report of TM -13 in 1989
NAPANEE, ON	18 VIII 1989-14	first report of TM -14 in 1989
NELSON, BC	04-11 VII 1988 BL	error for VIII 1989; extend period
NORTH SYDNEY, NS	36 VI 1989-17	impossible date
OROMCTO, NB	02-04 VIII 1990-08	error for VIII 1989-08; extend period
OSOYOOS, BC	17 I 1984-00	EKU confirmed
PICTON, ON	12 VIII 1989-17	timemark error: Saturday, so should be TM-11
PORT ALBERNI, BC	BL IV 1989-07	day in timemark slot
PORT ALBERNI, BC	27 IV 2016 4	error for 27 VII 1989 4
- extend the period of this error		
PRINCE RUPERT, BC	03, 09 & 11 VIII 1989	timemarks BL and . matched pairs (timemark used early 1984)
QUESNEL, BC	21 VIII 1980=1	error for 21 VII 1989=1; new TM
REVELSTOKE, BC	22 VIII 1989-17	change of timemark from BL
ROUYN-NORANDA, PQ	10 XII 1989=	error for 10 VII 1989=
STE. ADELE, PQ	24 VII 1989-16	error for 24 VIII 1989-16
STE. JULIE DE VERCHERES, PQ	13-24 VIII 1980=1	error for VII 1989=1; extend period
ST. MARYS, ON	26 VII 1989-17	POSTAL CODE; slogan on 27 VII
ST. STEPHEN, NB	25 II 1982-12	error for 1984; new timemark
ST. ZOTIQUE, PQ	09 VIII 1989=	new timemark
SELKIRK, MB	30 III 1984-19	new ERU
SIOUX LOOKOUT, ON	28 XI 1983-15	new ERU
SMITHS FALLS, ON	33 VIII 1989=	impossible date
SPRINGHILL, NS	19 XII 1983-17	new ERU
STURGEON FALLS, ON	12 III 1984-18	new ERU
SWAN RIVER, MB	12-20 VI 1987 0	error for VII 1989 0 extend period
SWAN RIVER, MB	5-8 VIII 1989.	error for VII 1989.; extend period
SYDNEY MINES, NS	24 VIII 1990-17	error for VII 1989-17
THE PAS, MB	19 VII 1989-08,-18; 23 VI 1989-08,-18	matched pairs
UXBRIDGE, ON	14-20 VIII 1980=	error for VII 1989; extend period
VAL D'OR, PQ	11-17 VIII 1990.1	error for VII 1989.1; extend period
WAINWRIGHT, AB	06 IV 1984-17	ERU confirmation
WESTLOCK, AB	31 VI 1989.2	impossible date; should be 1 VII 1989.2
WINDSOR, NS	14 V 1984-19	ERU
WINDSOR, NS	01-07 VII 1988-17	error for VIII 1989; extend period

PRINCE RUPERT, BC

Timemark . was in use on 28 XII 1983, and on 29 XII 1983 timemark BL commences. These have been confirmed.



ROUYN-NORANDA, PQ

A month error occurred in July with the postmaster inserting XII for VII on Monday 10 VII 1989 with 10 XII 1989= appearing. This was corrected by 11 VII.



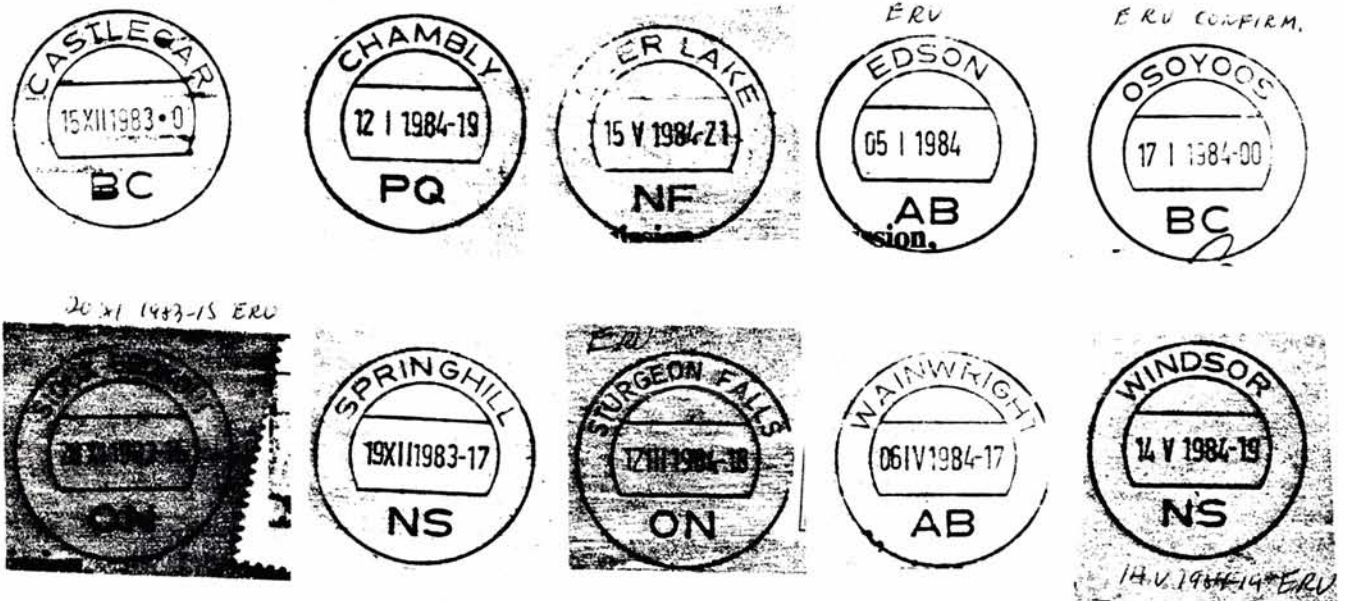
# The Klussendorfer

## EARLY REPORTED USAGES

A number of new ERUs have come to hand and a few new strikes have been reported confirming older EKUs. Although they have been listed on the previous 2 pages, they are summarized here because of their importance.

CASTLEGAR, BC	15 XII 1983.0
CHAMBLY, PQ	12 I 1984-19
DEER LAKE, NF	15 V 1984-21
EDSON, AB	05 I 1984 BL
OSOYOOS, BC	17 I 1984-00
SIOUX LOOKOUT, ON	28 XI 1983-15
SPRINGHILL, NS	19 XII 1983-17
STURGEON FALLS, ON	12 III 1984-18
WAINWRIGHT, AB	06 IV 1984-17
WINDSOR, NS	14 V 1984-19

Here are illustrations of these 10 strikes.



## MORE ALBERTA

Jim Karr sent some photocopies just after issue #6 was completed, so I'm including them here. First, there's an error at WAINWRIGHT with the date reading 23 VIII 1999-08. This is 1988, as shown by the 37-cent Parliament coil stamp.



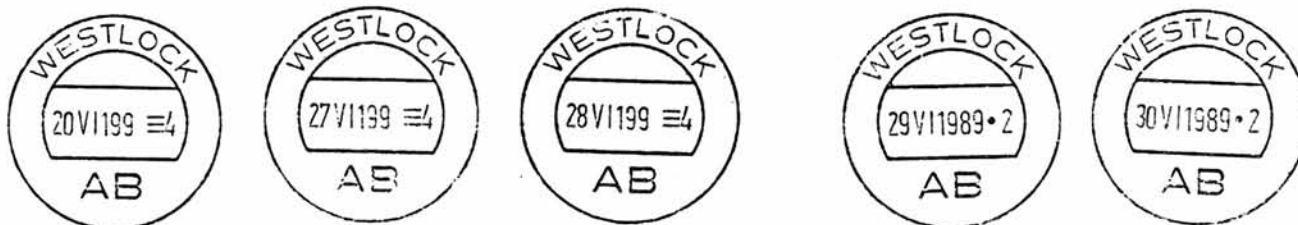
SPRUCE GROVE had a very short-lived error in August. In going through a large lot of covers for August 22, 23, and 24, Jim found the following:

22 VIII 1989.00	(normal)
32 VIII 1989.00	(error)
23 VIII 1989.00	(normal)
24 VIII 1989.00	(normal)

## The Klussendorfer

The date '32' could be an error for 22 or a transposition of 23. The error was quickly noted by the postal clerks and then corrected part way through the day (probably the 23rd, kgs).

Jim also sent pictures of the turnover time of the WESTLOCK 199 year error (pp. 67 and 108). This error continued from 09 VI 199  $\equiv$  4 through 28 VI 199  $\equiv$  4. No Saturday or Sunday dates were seen during this period. The error was corrected 29 VI 1989.2, with the timemark .2 continuing through July and August.

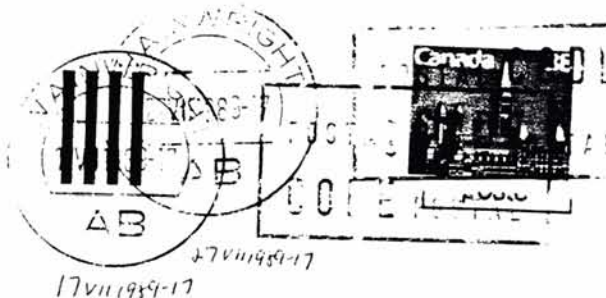


Here's a photocopy from Jim of the OLDS, AB one-day error (p. 108), and several examples of the HIGH RIVER, AB error of 1988 for 1989 (also p. 108).



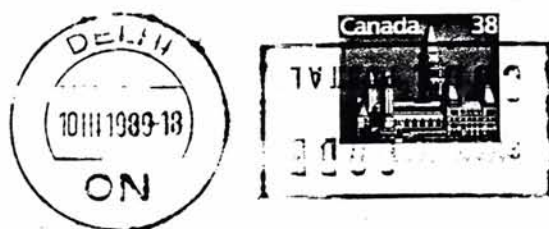
### WAINWRIGHT, AB

A report has been noted of a cover with two strikes dated 17 VII 1989-17 and 27 VII 1989-17, which is unusual. From the group of covers it came from, it is presumed that the 27th was a date error and the covers were run through the machine a second time with the 17th being the correct date.



### DELHI, ON

Robert Meek has sent a nice copy of the March DELHI invert, dated 10 III 1989-18. This invert is known from the 10th to the 17th. The correct dates were used on the 9th and the 20th (a Monday), so Saturday the 18th or Friday the 17th is the last day.





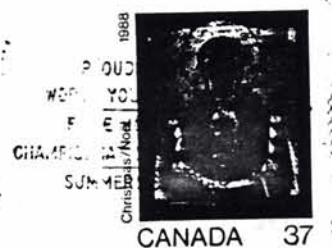
# The Klussendorfer

ST. ANDREWS, NB

Bob Meek also sent a nice strike of ST. ANDREWS dated 30 XII 1988-11. I can add a strike report of 04 VII 1989-11, for the record.

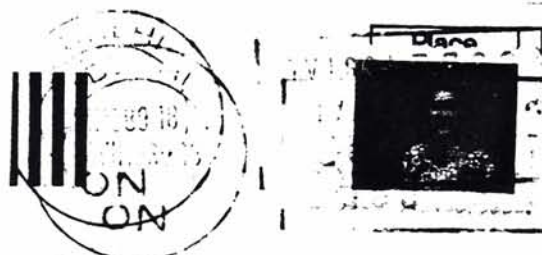


Bob also contributed a copy from a lovely corner card with a SUMMERSIDE, PE slogan.



DELHI, ON invert

The invert is back and recorded 10-17 VII 1989-18. Shown below is a double strike of this invert dated 14 VII 1989. It's unusual to get a double strike of an invert.



DELHI, ON 14 VII 1989-18 INVERT DOUBLE

ELMIRA, ON

The ELMIRA -13 timemark has shown up again. It was previously reported on 17 VII 1989. This report is for 21 VIII 1989. Question: is this -13 a designed use, or an error for -12 or -18?

MELFORT, SK

A new timemark has been reported on an early error. 20 III 1983-00 is an error for 1984, which is a fairly early date. The timemark -00 has not previously been reported.



SECON TIME



The last day of the 32-cent postage rate was 26 VI 1985. This may help pin down some error dates.

## The Klussendorfer

### BC NUDE and SLOGAN

As I get near the end of the preparation for this issue, I've just found Bill Robinson's photocopies in my file (cf. p. 121). His BC nude (shown below) is on a bank cover and is dated 07 VII 1989. Bill wonders if it's QUESNEL? or HOPE? As I said previously, my guess is MISSION.



Canadian Imperial  
Bank of Commerce



Bill also sent this strike of the CRESTON slogan from July 4th. Still in use on July 19th. Nice corner card!



*Lower Kutenai  
Indian Band Administration*

P.O. Box 1107 Creston, B.C. V0B 1G0



### AMHERST, NS

AMHERST has quite a variety of Klussendorf styles in 1989. The year started with timemark -19, the same as was used in 1988; -19 is recorded up to 24 I 1989-19. From 27 I to 30 I, an error of 27 XI 2017-27 has been reported (this is also a new timemark). On 2 II 1989, the error was corrected but another new timemark (-20) was in use. Things went well until 29 III 1989. On 31 III 1989-20, we record the introduction of the new AMHERST slogan cancel which is correct until 1 V 1989-20. On May 2nd, we note an error of 2 V 1988-2 for 2 V 1989-2, another new timemark. We have no further reports until May 10 when a different error is found up to 23 V 1989 with no reports yet for the late part of the month. All is well on June 1, as 01 VI 1989-1, until 6 VI 1989-1. Another error is found on July 17 until July 27 as 17 VI 1988-2 with month and year errors. These were corrected by 29 VII 1989-1 and remained correct to at least mid-August. So, AMHERST has had 5 timemarks, 4 errors, and a slogan so far in 1989.

Here's an example of the slogan with an error of 14 VI 1988-2 for 14 VII 1989-2.



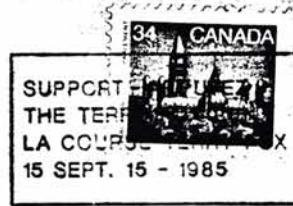
Amherst • Cent  
Centennial de A  
1889 - 1989



# The Klussendorfer

KENTVILLE, NS slogan - 1985.

The reports for the KENTVILLE Terry Fox slogan give an EKD of 14 VIII 1985 and an LKU of 25 IX 1985. I have an EKU report of 13 VIII 1985-18 and a confirmation of the 14 VIII 1985-18 date. A new LKD of 19 X 1985-18 has been recorded. An interesting oddity occurred with two reports of the POSTAL CODE killer being used during the slogan period. These dates for the POSTAL CODE are 16 and 19 VIII 1985-18. The EKU of the slogan for its second period was 21 VIII 1985-18. This use of the POSTAL CODE killer after only a few days of use of the slogan is most interesting.



ROUYN-NORANDA, PQ

After more than two years using timemark -00, this town has finally had a change in timemark to  $\equiv$ . The earliest date so far for this TM is 04 VII 1989, with 30 VI 1989 seen as the latest date so far for -00 timemark.



PORTAGE LA PRAIRIE, MB

Another town using a timemark for over two years has changed, from  $\equiv$  to BL. Timemark  $\equiv$  was noted last on 30 VI 1989, and timemark BL was seen on 04 VII 1989.

ELMIRA, ON matched set.

Generally, three different timemarks are used at ELMIRA. Below is a set of the three (-06, -12, -18) from 4 VII 1989



4 VII 1989-06

04 VII 1989-18

## The Klussendorfer

### FIGHT LUNG DISEASE slogans

Some unusual things are happening. As of November 10, 1989, some Klussendorf towns which had this slogan last year are not using it this year (such as HUMBOLDT, SWIFT CURRENT, THOMPSON, AND WEYBURN). MELFORT, SELKIRK, AND TISDALE have not been seen so far. PORTAGE LA PRAIRIE is again using the slogan with an EKU of 1 XI 1989 and the POSTAL CODE known the same date.

New towns this year with the slogan reported so far are PRINCE RUPERT, BC - 24 X 1989. (p. 125), PORT ALBERNI, BC - 07 XI 1989-11 with a new timemark, and TRAIL, BC - 08 XI 1989. . At this time, I wonder what else will show up. Late news: PRINCE RUPERT is reported 17 X 1989. POSTAL CODE and 20 X 1989. with the slogan.

TRAIL 08 XI 1989.



PORT ALBERNI  
07 XI 1989-11

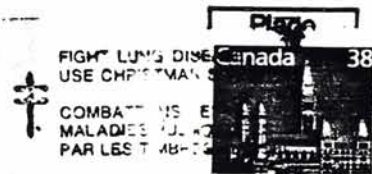


07 XI 1989-11

PORTAGE LA PRAIRIE  
1 XI 1989



PORTAGE LA PRAIRIE  
1 XI 1989



### FINANCIAL STATEMENT FOR YEAR #1.

Hereunder is a statement of the income and expenses of the BNAPS Klussendorf study group for its first year, from November 1, 1988 to October 31, 1989.

Income:	Dues from 48 members	\$480.00	\$480.00
Expenses:	Printing - 50 copies of #1	\$58.78	
	50 copies of #2	\$43.55	
	50 copies of #3	\$43.55	
	50 copies of #4	\$39.22	
	55 copies of #5	\$48.53	
	55 copies of #6	\$48.72	
	Additional copies (15) of #1-6	\$87.87	\$370.22
	Startup expenses - 20 letters, envelopes, copies, postage	\$8.27	
	Envelopes for Klussendorfer		\$31.18
	Postage for issues #1-6 and back issues		\$161.88
	Total expenses		\$571.55
	Deficit		\$91.55

Part of this deficit will be made up by a grant from BNAPS to our study group. We mail five free copies of each newsletter to the BNAPS Editor, Library, Study Group Coordinator, President, and Study Group Columnist in Topics. This cost the study group about \$51.00 and so with the stipend from BNAPS we will be about \$41.55 in the hole. We will write this off and start even for year two.