

December 2014

Dave Lacelle

fancycancel@hotmail.com**Group News.**

May I take this opportunity to wish to all of you a fine of the winter season, a Merry Christmas, and lots of good collecting opportunities in the New Year. I would also like to thank the many of you whom have contributed to this newsletter; it certainly is not a one person project! Please keep sending "stuff" in.

As usual, I have printed and snail mailed this to all of you, with (if appropriate) an attached dues notice. Dues are \$10.00 for 2015, which covers the three newsletters. Thanks also to those who pay in advance for several years, and also several donations. Total dues last year were \$ \$802.00 of which \$ 378.00 were donations or pay ahead. I will have to drop seven members for non-payment of dues for more than three years. (G.A., J.C., A.F., A.J., B.K., B.L., and H.R., this is your last issue. I do not charge back dues, if you wish to remain please send in 2015 dues. We welcome your continued participation in the Study Group. Three or four of you have indicated you have reached the magic age of 90+, you do NOT owe dues. The picture on the dues notice (see cut at right) by the way looks ghastly, however it is just a slogan cancel with Santa's head happening to fall over Queen Vic's head. HO HO HO.



I also wish to thank the 20 (!) or so of you who sent in a response to my request for discounted postage. Many of you also sent in newsletter items, general comments etc. hopefully all of which will appear here. One gentleman from overseas sent a very generous donation of various uncanceled Canadian stamps on paper. (I can't imagine how he could have received them uncanceled....) If possible, when mailing in dues to me, could you please use philatelic postings. I then send the stamps (the cancelled ones) to Oxfam Canada's "Help STAMP out Poverty program. We have five new members, Joseph Bell, Craig Marshall, Bill Pekonen, Roland Seymour, and Robert Stock. The first year for new members is free. Welcome aboard guys, I've never had so many new at once. We now have about 80 members.

A few of you have commented on the choice of chapter styles (ie Letters and Initials, Flowers etc.) in our Fancy Cancel book. I generally followed the chapter styles of the previous book, "Day and Smythies" rather than reinventing the wheel (or radial cancel). If D&S said it was a flower, so did I.

There have also been some comments on the accuracy (or lack of) in some of the earlier publications. D&s illustrations were all hand drawn usually from tracings. There are about 1350 of 'em in the second edition of D&S ! Modern scanning (or even photocopying) was not in great use in 1961. There is of course a wide range of variation in accuracy depending on who is doing the tracing, how good the original is etc. The illustrations in our book were done using a hand held scanner – a neat new "techie toy" in the 1990's – however some distortion (usually vertical) can also result from this – see the item before "Fakes and forgeries for an example.

And, a final comment ... (Will he ever get on to the cancels!...)

I am having problems with what appear to be too many "New & Unrecorded" items appearing on line recently. I made a comment in one of the newsletters "... anyone can carve a potato...". Unfortunately people want opinions based on computer scans, and/or forwarded illustrations and I cannot test for ink types, perf. hole staining, ink penetration, etc. unless I see the actual item. I must advise, if it dinna show up in the last ninety years, in the three books with cancel detail, 67 Newsletters, thousands of photocopies, then plea\$e be careful!

**BNAPS FANCY CANCEL & MISCELLANEOUS MARKINGS NEWSLETTER 67
REVISIONS TO PREVIOUS NEWSLETTERS**

Newsletter 66, Page 5 The reference to L 698, a rather obscure "P" cancel Ron Smith has shown me the Mar. 1902 cover from Penobsquis NB. It seems odd that it would also appear on much earlier stamps however these may have been old stock from a small PO such as Penobsquis. The information in the second edition of our book is thus 'good', even though there had been a bit of compilation confusion in D&S.

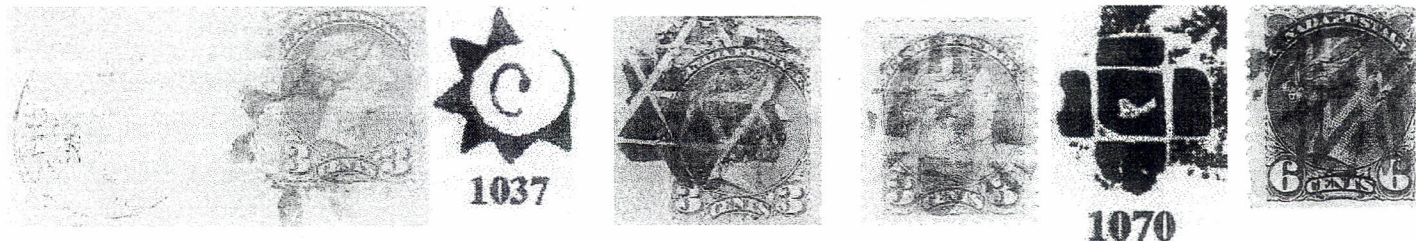


Newsletter 66, Fakes and Forgeries. The illustrated example of L 1283 (a solid Ottawa crown cancel) appears to be genuine, and the scan in our book "needs work" (oops) when compared to the official P&A proof book strike. This is the first genuine strike of this I have seen, although P.H. Journal, # 97 states that a "few (5) strikes are known on government departmental mail in March 1880." I have never seen any of these five, **please send any cover examples**. The cover referred to here is not 'Government business'. Also, the cancel was proofed by P&A in Feb. 1880 (not Apr. as I stated in Newsletter 66). For a comparison of some of the various illustrations of this cancel, please see the last page. The cut is a photocopy from the P&A proof book in Ottawa.

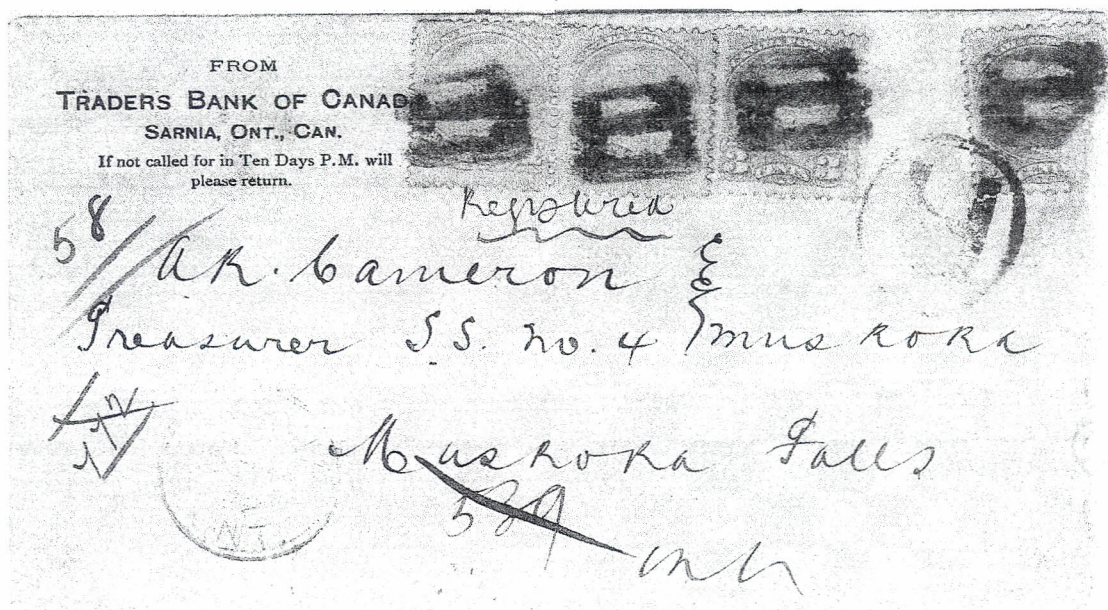


CORRESPONDENCE AND QUERIES

Ron Smith sent in the items below. His first item is L 1037, now located as St. Mary's Ont., Dec. 1886. St. Mary's also used several other similar radial designs such as L 1492 and L1495. His second item is similar to L 1015, used at Barrington NS, July 1875. Similar cancels were used at two other PO's in 1871 and 1879. The next item is on stamp, and is 'somewhat' similar to L 1070. Does anyone have a cover? His final item is an early state of one of the "Ottawa Geometric" series, L 1672 used in July 1872. The 6 center is the correct shade.

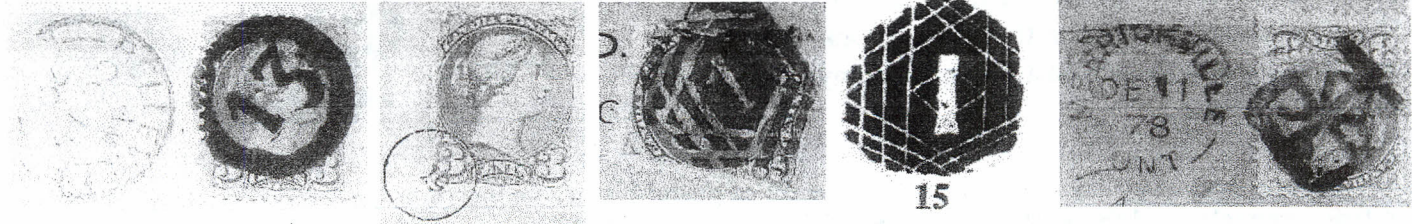


Ron also sent this cover, Sarnia Ont., Dec. 1892. Ron suggests it is an "S" for Sarnia. I would like to know if anyone else has examples of this, and will probably list it as an "S", with references on the "B", and "8" pages. (It does not work as a "B" PM initial [PM John Dawson] and Sarnia was number 28 in the two ring numeral list, not 8.)



BNAPS FANCY CANCEL & MISCELLANEOUS MARKINGS NEWSLETTER 67

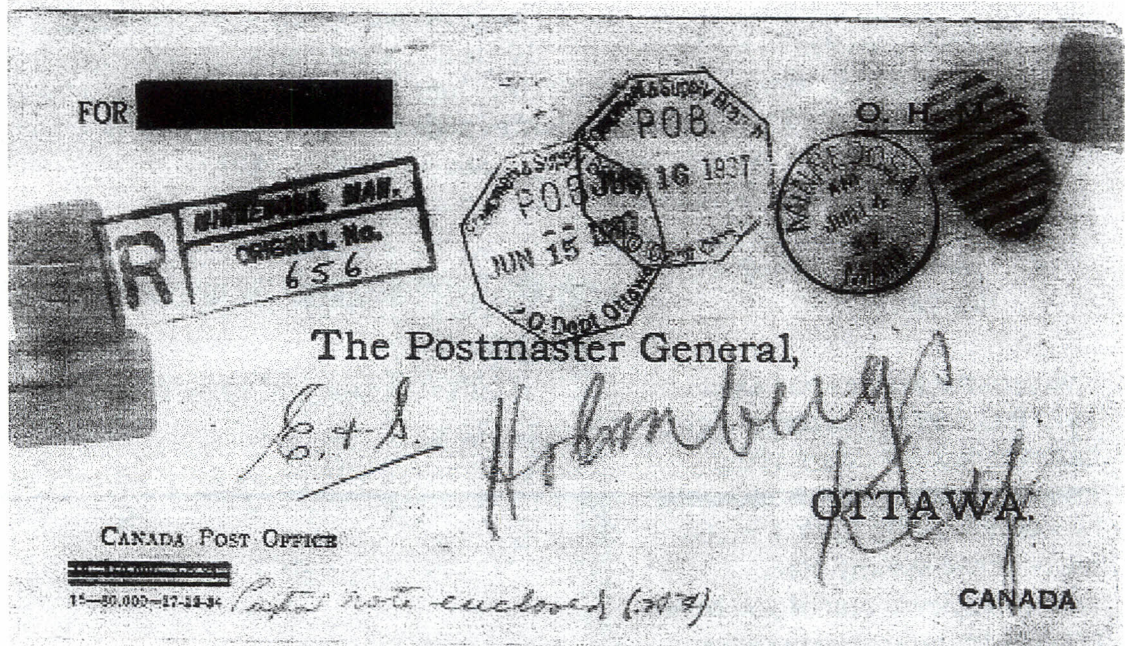
Iain Hallum sent in this great strike of the one ring numeral 13, L 135 used at Belleville Ont. Oct. 1870. This is a carryover from Belleville's official listing in the "two ring" numeral cancel series. His next item is this tiny "19" (or 61 ?) which I have seen before, but have never located. Iain's example is on cover, (to Herring Cove, Halifax County) unfortunately there are neither any other postal markings, nor return address information. The stamp appears to be from the early to mid 1880's. The next item is L 15, interpreted as a numeral "1" cancel used at Toronto ON, July 1874. This appears to be a cleaned or recut example as the intaglio lines are thinner in the other earlier May 1874 example. (There is a possibility this is a fake, however in several other ways it looks good, and also explains why the D&S illustration has wider lines.) Iain's last item is a new late date for L 1627, Merrickville. Ont., Dec. 1878. A rather similar cancel listed as L 1157 was also used from Merrickville, Dec. 1876 to Aug. 1879. The overlap of use is odd however they do not seem to be the same.



Bob Turkowski sent in this cork from Newfoundland on Sc. 91 (issued 1910). There are not many Newfoundland cork cancels – I assume they followed the British model (OFFICIAL cancels ONLY), and were a separate colony during the Canadian fancy cancel use era. This is also late use for a cork. Any other Newfoundland corks out there?

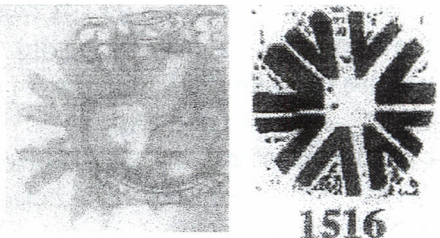


Bill Pekonen sent in this well marked "reprinted envelope" (June 1937) with an odd octagonal "Equipment and Supply Branch" marking. Has anyone else seen this marking? The cover has two ms, "Postal note enclosed (20 cents), and "E&S Holmbergs Key". Presumably PM Holmberg had lost his PO keys, and it cost him for a replacement set? I seem to have a



problem accessing the PO & PM Public Archives database, so cannot confirm if Mr. Holmberg was the P.M.

Mike Halhead sent in this new late date for L 1516, used Peterboro, Ont., Oct. 1879. The other covers for this were from Mar. 1875, this is an unusually long period of use for a cork. His example does look considerably more worn than the illustration from our book. The original scan is poor, I have 'fiddled' with the brightness.



Mike Halhead also sent in this "14" which at first glance makes one think of a four ring numeral cancel without the rings. (I've fiddled with the contrast.) The numerals are different from the 4R14 however. Bill Radcliffe came up with what I am sure is the correct answer, a 14 pence rate hammer from the stampless period. The stamp has a weak grid cancel, however the centring of the "14" makes me think of a 'keener' PM recancelling it. Jarrett lists four "14" ratemarks, none of which are identical to this.



Mark Berner sent in a cover to UK from Westbourne Man., Dec. 1876 with a cancel somewhat similar to L 1507. (The cancel may be partly double struck, I have again fiddled with the contrast.) Are there any other examples out there?

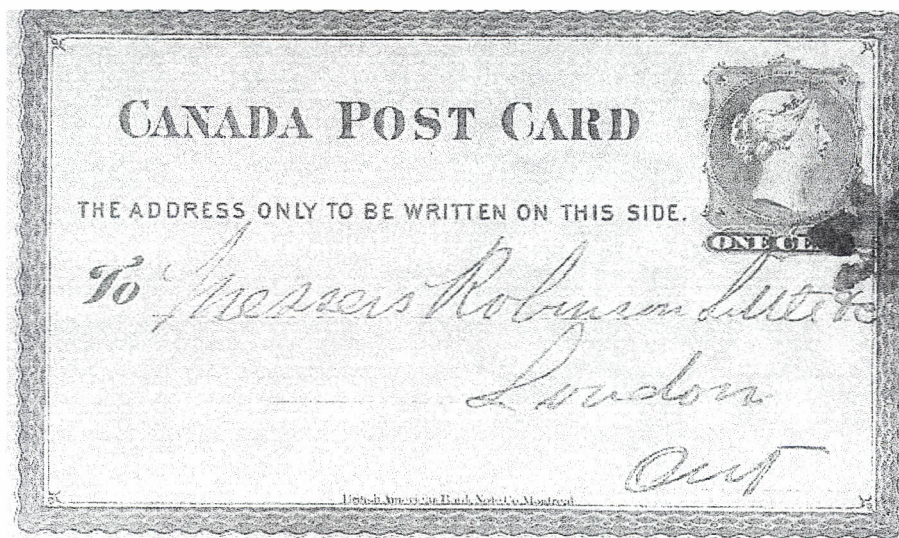


Robert Stock sent in a very detailed and precise bit of postal history he has done on Oxford County Ontario and the fancy cancels used there. It is nice to receive a "geographic" fancy cancel (for some reason I almost typed a new word here, "fancel", strangely enough it 'almost works!') study, as opposed to what most of us collect, either specific fancels (ie Initials), or representative items of different fancel types. (If you use a new word more than three times in a set context, can it become a realword ?)

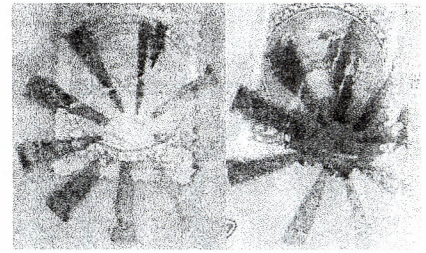
I will run a bunch of Robert's material below, but first in terms of general information he has provided a new late date for L 126 the Woodstock Ont. "10" duplex cancel, July 1891. This cancel was used for at least four years, and he notes that in the late use the "10" is no longer visible. Another new late date is the eight ray radial described in L 1506, "similar" ... Ingersoll Ont., June - July 1879. He also provides several new uses of 'Crown Wax Seals' as cancels. The following should be added to our Appendix 4a, pgs. 194 - 196.

1. Verschoyle Ont., typo. In book text, should 1877, NOT 1897.
2. Brownsville Ont., Cover, July 1882.
3. Richwood Ont., Cover, July 1885.
4. Vandecar Ont., Postcard, July 1887.

I've seen the Maplewood Oct. 1870 P.C. leaf (in purple) at right, however was not aware of the location or date which is indicated by Robert from the back. I would really like to see any other examples, please send if you have any. (There is no need to cancel the stamp part of a P.C. although many PM's did so, the P.C. is from the P.M., (C.G. Bean) yet he did not use his own CDS, and the cancel and a London Ont. commercial stamp on back is also purple. Any other uses would clear up these points.)



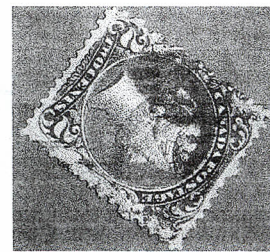
Robert also shows two examples of the same unlisted nine ray radial cork used at Ingersoll Ont., in June and July 1879 showing substantial wear in this relatively short time. Nine rays is somewhat unusual, it is much easier to carve eight rays! The “blob” in the middle may be extra ink on the cork, or possibly something which caused the envelope to bulge up at that point – see L 1576 for an example of this. The next item is L 1248, an earlier example than the illustration used in our book. This cancel has been reported



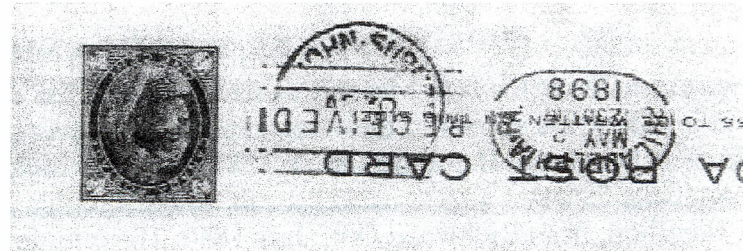
previously from several locations, with a commonality of use on the London & Parry Sound RPO. This cover (Dec. 1879) went from Norwich Ont. to Simcoe then was redirected (more or less backwards to St. Thomas Ont. It was probably on the L&P on the redirection portion. The next item is a small purple diamond (or arrowhead?) used from Maplewood Ont. Jan. 1893. The intaglio ‘T’ has not been previously reported (any others out there?), and is from Hickson Ont., Dec. 1885. It is not a P.M. initial, she was Mrs. S. Vance. The last item is a “what is it ?” cancel. He suggests that this represents an object rather than a geometric design (I agree), and also suggests possible Masonic aspects. It is from Beachville Ont., Dec. 1887. The PM was T. Taylor.



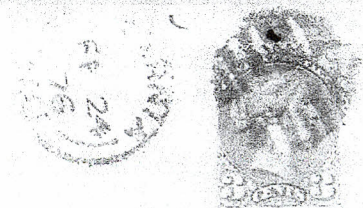
Glenn archer sent in this grid numeral on two cent LQ (about mid 1868), there is also a weak two ring (or bullseye) strike. I'm 99% certain this is an Irish numeral 357 as shown on pg. 191 of our book. Unfortunately the Ireland and Scotland captions got mixed up on this page. This numeral 357 is also recorded on a 6 cent LQ.



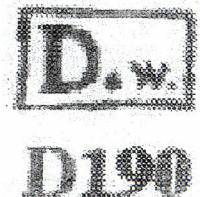
David Jones sent in this miscellaneous marking item, with the question as to what the circular marking is. He suggests it is some sort of “Quebec City...”, while I see it as a “(Saint) John Sub...” NB upside down, possibly (but less likely) St. John Que. Unfortunately the earlier Saint John Subs opened around 1910 – unless I am missing something here. Any comments on this are appreciated.



Randy Evans sent in this Sarnia Ont. cover Feb. 24, 1876. He suggests that it is intended as a fancy leaf cancel. Does anyone else have any other examples?



Just in case anyone missed it, the most recent issue of Topics has an incredibly detailed write up on the enigmatic “D.w.” marking, our D 190. The period of use is May 1930 to Feb. 1932. I’ve listed it in the “Deletions & Misc.” section as it was not used as a cancel. (Scale here is approx. ½.)



BNAPS FANCY CANCEL & MISCELLANEOUS MARKINGS NEWSLETTER 67

On page one I referred to the fact that D&S and many other early cancel illustrations were prepared from hand drawn tracings, or occasionally just a rough hand drawn illustration. Here are several different illustrations of L 1283, starting with a photocopy from the Pritchard & Andrews proof strike, to my distorted (top of crown) scan, and then various hand drawn examples. (All these illustrations are a tiny bit over-scale.)

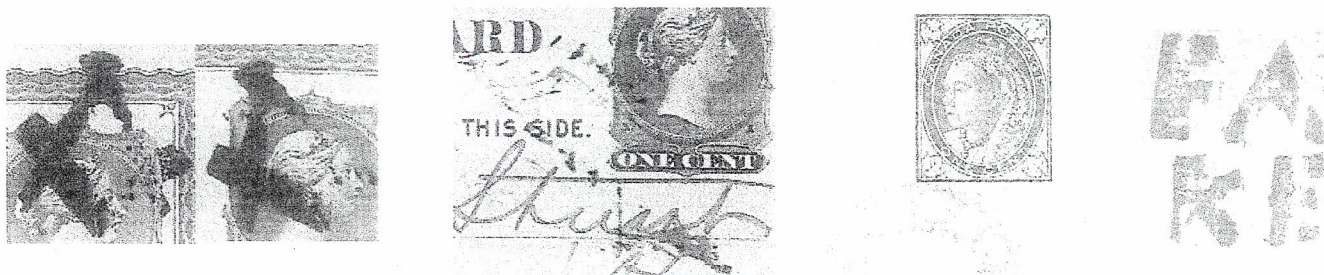


P&A Proof Lacelle 2000 Smythies 1964 D&S 1961 Jarrett 1929
 Brian Hargreaves sent in a large amount of numeral cancel material, I just have room to squeeze in some of his Toronto 2's. More in the next newsletter...



FAKES, BOGUS AND SPURIOUS ITEMS.

Two examples of the fake Masonic cancel, D594a in the 2nd Edition (L 1318 in 1st) on Printed P.C.s have been sent in. These are similar to the others reported, however it is worthwhile to note that both are addressed to Simpson Stewart in Hamilton Ont. in 1881. This may indicate the fakers source of these P.C.'s. Check your collections for other questionable cancels on P.C.s to this firm. The third cut is another PC to Simpson Stewart in Hamilton, from Richwood Ont., July 1880. The meaning of the cancel is obscure, the cancel ink and CDS ink do not match. The fourth example is the philatelic use of the Hickson Ont. old crown wax seal on old post cards (and ?), mentioned in Appendix 4a of our book. The last item is my one & only attempt to carve a FAKE cork. All of you will receive a "proof strike" of this in this snailmailing.



...and the Best of the Season to all of you.
 Dave.Lacelle