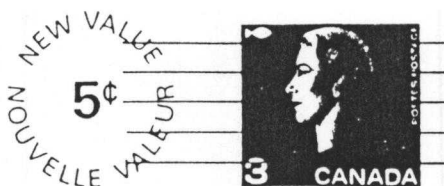


CENTENNIAL DEFINITIVES  
STUDY GROUP  
NEWSLETTER  
Number 35  
Spring 1987



Editor:  
Douglas Irwin  
2250 Lawrence Ave. East #406  
Scarborough, Ontario, M1P 2P9

My request for photocopies of crash covers, covers damaged in the mails, interesting misdirected covers, or simply covers with interesting hand-stamps on them brought a response from only one member. Hopefully a second request will bring some additional results.

Bob Prince has sent in an interesting example of a couple of pre-printing paper creases on the 5¢. We are always looking for examples of errors and varieties for the newsletter.



The stamps are PVA gummed and untagged.



5¢ DIE  
British American  
Bank Note Company



6¢ DIE  
British American  
Bank Note Company

### BRITISH AMERICAN BANK NOTE COMPANY SURCHARGES

There are two new additions to be made to the listing of Centennial post-cards, revalued by the British American Bank Note Company as found on page 100 of the second edition of Canada, The 1967-73 Definitive Issue. There are also a number of corrections to be made on that page as well. The bottom photo is of Cameo envelopes (not postcards) and the caption is wrong as well.

100

CANADA: THE 1967-73  
DEFINITIVE ISSUE

### Postal cards surcharged to meet the 1968 rate changes

As in the case of the envelopes, when the rate changes occurred all stocks of older postal cards were recalled to Ottawa for surcharging. (The exception is the case of the reply card which has previously been noted.) The surcharging was again done by two companies: Gasparo Printing appears to have used the same dies which it used for the envelopes (as illustrated above), while British American Bank Note Company used the dies shown opposite. Four cent cards were surcharged to 6c, while the 3c cards were surcharged to 5c. Again very small quantities of cards issued prior to those of the 1967 design were also surcharged. Only Gasparo-surcharged postal cards were distributed by the Philatelic Service. The BABNCo surcharges on cards of white card stock were apparently applied mainly to cards in the 10-on format and were used in bulk by a relatively small number of users.

Besides the 1967 issue, surcharges have been reported on the following postal cards:

— British American type

5c on 3c Cameo (P 94j) P 107i  
5c on 3c Cameo (P 94d) P 107  
5c on 3c Cameo (P 94h) P 107a  
6c on 4c Cameo (P 97b) P 108c

— Gasparo type

5c on 3c white Cameo (P 94h) P 107b  
5c on 3c Ivory Cameo (P 94i) P 107h  
6c on 4c Cameo rouletted (P 97b) P 108

Other unreported types may exist.

### CHECK LIST

5c on 3c — Gasparo type

white card P 107c  
ivory card P 107d  
ivory card r'letted P 107e

— British American type

white card P 107f  
ivory card P 107g  
ivory card r'letted

6c on 4c — Gasparo type

white card P 108a

— British American type

white card P 108b



British American overprint  
on Cameo post cards

The first new postcard shown came from John Aitken (figure 1). It is a 3¢ mimeo (buff coloured) precancelled card, issued in sheets of three and rouletted horizontally between. It has been overprinted by the BABNCo to 5¢. The card is the lower of the three on the sheet and has been separated by scissors and portions of the rouletting can be seen along the top edge. The card is unlisted in the Webb catalogue.

Figure 2 shows the 3¢ precancelled Cameo postcard (P94d) surcharged to 5¢ (P107).

Figure 3 shows the 3¢ precancelled Cameo postcard with added inscription (P94h) surcharged to 5¢ (P107a). Both of these postcards were used in conjunction with elections in British Columbia.

DO ANY OF OUR MEMBERS HAVE EXAMPLES OF THESE CARDS NOT USED IN THE B.C. ELECTIONS?

John Aitken has sent in a postcard which is sort of listed in the handbook. It is a 4¢ Cameo card (P97b) surcharged to 6¢ by BABNCo and used by a shoe store in Windsor, Ontario on January 19, 1970 (figure 4) These cards were probably in sheets of 10 when surcharged and after the additional printing was added by the shoe store, cut into individual postcards. John reports other known usages of these cards by Eatons and Quebec Hydro.

DO ANY MEMBERS HAVE ADDITIONAL USAGES OF THIS CARD?

These are similar to the cards shown in figure 5, which is the 4¢ Cameo card (P97b) from a sheet of 10, revalued to 6¢ (P108c) and privately rouletted into individual cards by C.P.R. These are shown on page 102 of the handbook.

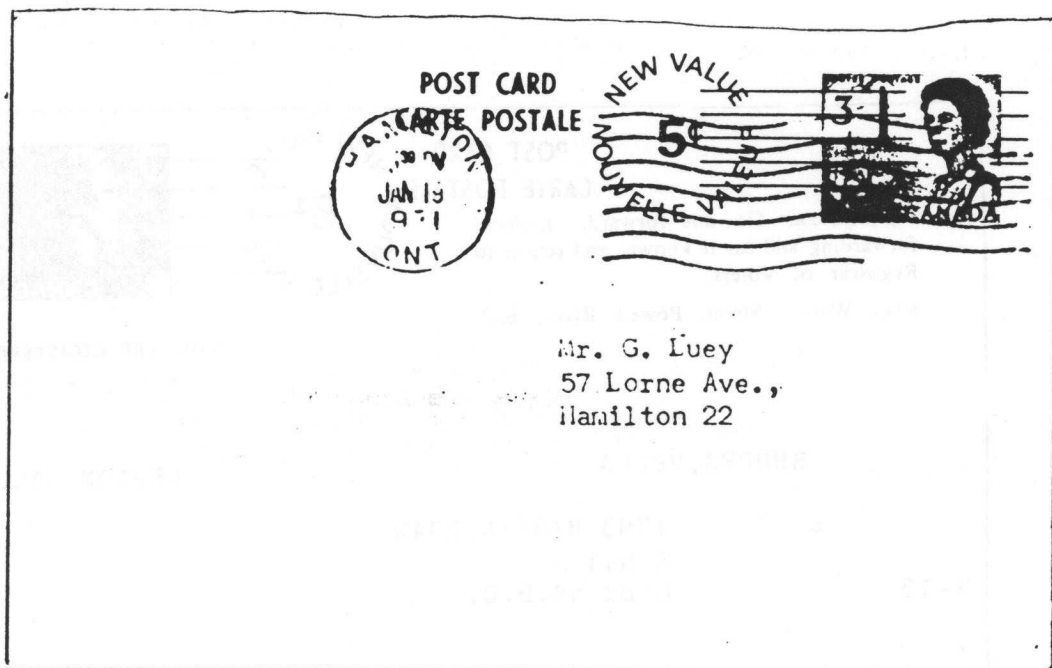
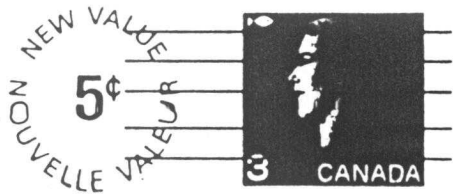


FIGURE 1

NEW UNLISTED CARD

POSTMASTER.—Do not forward. Endorse forwarding address if known, and return to Registrar of Voters,

6243 Walnut Street, Powell River, B.C.



YOU ARE REGISTERED  
AND VOTE AT

WILLIS, FREDERICK JOHN

LEGION HALL

R 1128 ARBUTUS REACH

M-13 GIBSONS, B.C.

FIGURE 2 5¢ (P107) ON 3¢ CAMEO (P94d)

POST CARD  
CARTE POSTALE

POSTMASTER.—Do not forward. Endorse forwarding address if known, and return to Registrar of Voters,

6243 Walnut Street, Powell River, B.C.



YOU ARE REGISTERED  
AND VOTE AT

RHODES, VELMA

LEGION HALL

E 1793 MARTIN ROAD

R.R. 1

M-13 GIBSONS, B.C.

FIGURE 3 5¢ (P107a) ON 3¢ CAMEO (P94h)

TROTT'S

352 OUELLETTE AVE.



Shoes LIMITED  
WINDSOR 14, ONTARIO

POST CARD  
CARTE POSTALE

NEW VALUE  
6¢  
NOUVELLE VALEUR



Mrs. Ruth Pickering  
856 Jefferson Blvd.  
WINDSOR 16, Ontario

**"THE SALE WINDSOR WAITS FOR!"**

FIGURE 4 6¢ (P108c) ON 4¢ CAMEO (P97b)  
- NO ROULETTING -



3-63 CANADIAN PACIFIC RAILWAY COMPANY

Freight Advice Avis de réception de fret

Customs Report No.  
Rapport de Douane No.....

Station  
Gare

The following described goods have arrived at this station consigned to you in

L'envoi ci-dessous désigné est arrivé en gare, consigné à votre ordre, dans le

Car Wagon No..... Initial.....  
From  
De.....

You will please remove goods without delay as same remain here entirely at owner's risk and expense.

Vous êtes prié de prendre sans délai livraison de cet envoi qui est gardé ici à vos frais et à vos risques et périls.

DESCRIPTION AND ARTICLES DESCRIPTION ET EFFETS

| WEIGHT<br>POIDS | RATE<br>TAUX | CHARGES<br>FRAIS |
|-----------------|--------------|------------------|
|                 |              |                  |

(See other side)

(Voyez au verso)

POST CARD  
CARTE POSTALE

NEW VALUE  
6¢  
NOUVELLE VALEUR



FIGURE 5 6¢ (P108c) ON 4¢ CAMEO (P97b)  
- PRIVATELY ROULETTED -

## Fluorescence Update

If you would like to keep your specialized tables up-to-date in the second edition of "Canada, The 1967-73 Definitive Issue" then here are some changes:

### Table 7 1¢ sheet stamp

plate 2c remove dot for dex (smooth) gum  
plate 3a add dot for dex (streaky) gum  
plate 4e delete column  
plate not identified "O" remove dot from UV colour listed and list as new UV colour "black on blue violet flecked"  
plate not identified "R" remove dot from UV colour listed and list as new UV colour "black on dark grey"  
Winnipeg tag W2 "C" remove dot for red-brown ink shade  
Winnipeg tag W1 "D" add dot for red-brown ink shade  
Winnipeg tag W1 "H" bright white paper, dex (smooth) gum, light red-brown ink shade, fluorescent grade 10, black on blue-white UV colour  
Winnipeg tag W1 "J" bright white paper, dex (streaky) gum, light red-brown ink shade, fluorescent grade 10, black on blue-white UV colour

### Table 8 2¢ sheet stamp

Plate not identified "G" delete entire column  
general tag OP2 "L" delete entire column

### Table 9 3¢ sheet stamp

plate not identified "A" delete entire column  
plate not identified "B" add UV colour dot for black on light ivory

### Table 10 4¢ sheet stamp

plate not identified "K" change fluorescent grade of 2 to 7

### Table 13 6¢ orange perf 12½ X 12

Winnipeg tag W2 "D" off-white paper, dex (smooth) gum, pale orange ink shade, fluorescent grade of 2, reddish-brown on light blue flecked UV colour

### Table 15 6¢ black perf 12½ X 12, type B

Winnipeg tag W2 "C" off white paper, dex (smooth) gum, grey-black ink shade, fluorescent grade of 2, black on light violet flecked UV colour  
Winnipeg tag W2 "D" off white paper, dex (smooth) gum, grey-black ink shade, fluorescent grade of 2, black on violet UV colour

### Table 17 7¢ green

plate not identified "A" should be listed as plate 1d  
delete entire row of "black on cream UV colour"