



BRITISH COLUMBIA

POSTAL HISTORY

RESEARCH GROUP

Volume 22 Number 4

Whole number 88

December 2013



We're changing...

in Vancouver!

**A new Canada Post plant
is coming to town.**

Get the latest news at canadapost.ca/notice

CANADA POST  POSTES CANADA

NEW PACIFIC PROCESSING CENTRE

Starting in February the Vancouver Parcel Distribution Centre (VPDC) and the Vancouver Mail Processing Plant (VMPP) will be relocated to the new Pacific Processing Centre (PPC) located next to the Sea Island Airport at 5949 Ferguson Road, Richmond. The following pages have been selected from recent post office releases.

CANADA POST
2701 RIVERSIDE DR SUITE N1200
OTTAWA ON K1A 0B1

POSTES CANADA
2701 PROM RIVERSIDE BUREAU N1200
OTTAWA ON K1A 0B1

January 13, 2014

Include the sentence below with email address inserted if letter is being sent electronically.
This electronic package was sent to <EMAIL>.

New Canada Post facility near Vancouver Airport - important information enclosed to help you get ready for changes in February and March

Dear Customer,

Canada Post's new Vancouver plant, the **Pacific Processing Centre** located at **5940 Ferguson Rd in Richmond**, adjacent to the Vancouver International Airport, is near completion.

As communicated to you in a letter in October, Canada Post is relocating the Vancouver Parcel Distribution Centre currently in Richmond and the Vancouver Mail Processing Plant in downtown Vancouver to the new airport facility.

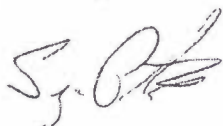
The new location will offer easier access, increased dock capacity, better parking and staging lanes, and alleviate traffic congestion in the downtown area. The new Pacific Processing Centre will be open to customers in two stages, based on where you currently deposit your mail:

- Starting **Monday, February 24**, if you deposit your mail at the Vancouver Parcel Distribution Centre, 2551 No. 6 Road, Richmond;
- Starting **Monday, March 17**, if you deposit your mail at the Vancouver Mail Processing Plant, 349 West Georgia St, Vancouver.

The table on the following page summarizes how the changes may affect you, including services that will remain available on West Georgia. For your added convenience, a map of the new Pacific Processing Centre, showing the location of the Receipt Verification Unit and parking, is enclosed.

If you have any questions about these changes, please contact the Commercial Service Network at 1-866-757-5480.

Sincerely,



Serge Pitre
Vice-President, Sales

Changes affecting customers depositing mail in the Greater Vancouver Area - effective February and March 2014

New Canada Post facility: PACIFIC PROCESSING CENTRE (PPC) 5940 Ferguson Rd (near Vancouver International Airport) Richmond BC V7B 0B1	
Where do you currently deposit your mail?	Important dates to remember and actions to take
Vancouver Parcel Distribution Centre (VPDC) 2551 No. 6 Road Richmond BC V6V 1P0	Friday - February 21, 2014: <ul style="list-style-type: none"> Last day to deposit your mail at the VPDC (the facility is permanently closing on this day) Empty shipping containers are no longer available at this location
	Monday - February 24, 2014: <ul style="list-style-type: none"> PPC opens and is ready to receive your mail New site number to be used in the Electronic Shipping Tools (EST) is 1186 Commercial customers can pick up empty shipping containers at the new facility starting this day
Vancouver Mail Processing Plant (VMPP) 349 West Georgia St Vancouver BC V6B 1Z1	Friday - March 14, 2014: <ul style="list-style-type: none"> Last day to deposit your mail at the VMPP (the facility is permanently closing on this day) Empty shipping containers are no longer available at this location
	Monday - March 17, 2014: <ul style="list-style-type: none"> PPC opens and is ready to receive your mail New site number to be used in the Electronic Shipping Tools (EST) is 1186 Commercial customers can pick up empty shipping containers at the new facility starting this day
Additional mail deposit options	
If you deposit up to 2 monotainers of mail per day of all product types other than: <ul style="list-style-type: none"> - Machineable Incentive Lettermail - Machineable Publications Mail 	<ul style="list-style-type: none"> Effective March 17, 2014, you can deposit your mail at the new Commercial Deposit Centre (CDC) located at 349 West Georgia St (access off Hamilton St) New site number to use in the Electronic Shipping Tools (EST) is 6588 If your mail volumes exceed the CDC limits, you will need to deposit your mail at the new PPC
If you deposit up to 5 containers of mail (i.e. boxes, lettertainers) per day of all product types other than: <ul style="list-style-type: none"> - Machineable Incentive Lettermail - Machineable Addressed Admail - Machineable Publications Mail 	<ul style="list-style-type: none"> If you already do so, you can continue to deposit your mail at the main post office located at 349 West Georgia St in Vancouver Postal boxes will remain at this location If your volumes exceed the post office limits, you will need to deposit your mail at one of our Vancouver-area CDCs or the new PPC
If you deposit Unaddressed Admail for local delivery only at 349 West Georgia St	<ul style="list-style-type: none"> You can continue to deposit your Unaddressed Admail for local delivery only at any of the five depots located at 349 West Georgia St (Depots C, K, 31, 74 and 99)
If you are a Large Volume Receiver who picks up your mail at 349 West Georgia St	<ul style="list-style-type: none"> You can continue to pick up your mail at this location

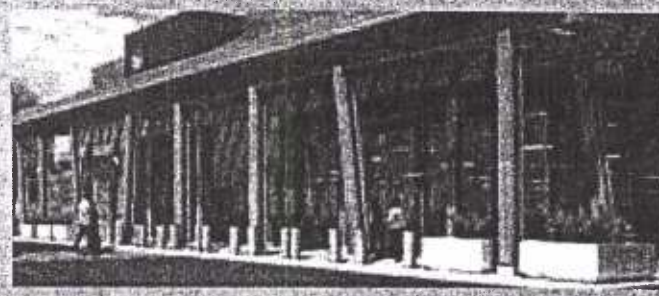
For information on where you can deposit different types and quantities of mail near your business, choose **Find a Deposit Location** under Tools at canadapost.ca/business.

Canada Post is transforming to serve you better

You've probably heard that Canada Post is undergoing Postal Transformation – a national infrastructure-renewal program that includes major investments in equipment, technology and processes. The next phase is the new Pacific Processing Centre right here in Vancouver.

Did you know?

Establishing our Vancouver processing facility at the airport is a strategic decision that will improve Canada Post's access to vital transportation links, to support e-commerce business, process parcels and mail faster, and provide better customer service.



Get the latest news at canadapost.ca/notice

Do you deposit your mail at the Vancouver Parcel Distribution Centre?

Here's what you need to know.

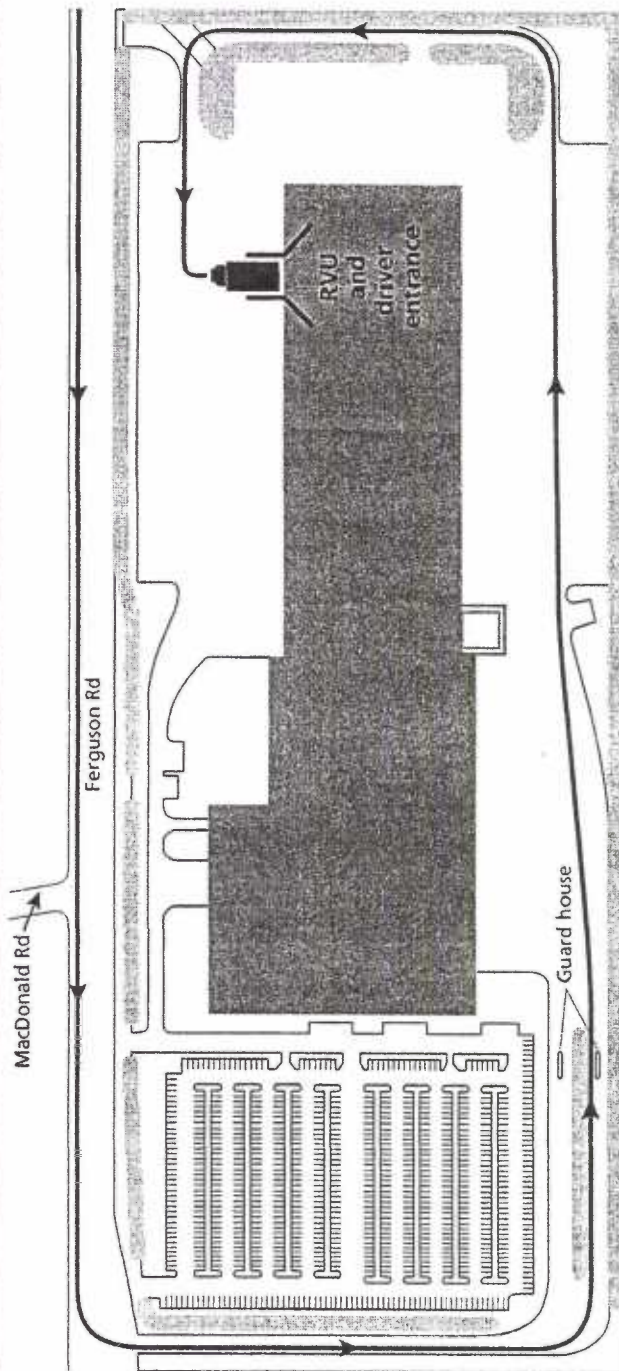
What: New Canada Post parcel distribution centre in Vancouver to be known as the Pacific Processing Centre

When: Open to customers
Monday, February 24, 2014

Where: 5940 Ferguson Road
Richmond BC V7B 0B1



Canada Post Pacific Processing Centre



5940 Ferguson Road, Richmond

Open to customers as follows:

- Starting **Monday, February 24**, if you deposit your mail at the **Vancouver Parcel Distribution Centre**, 2551 No. 6 Road, Richmond.
- Starting **Monday, March 17**, if you deposit your mail at the **Vancouver Mail Processing Plant**, 349 West Georgia Street, Vancouver.

	RECEIPT VERIFICATION UNIT (RVU) 5940 Ferguson Road, Richmond (see above for dates open to customers)	COMMERCIAL DEPOSIT CENTRE (CDC) 349 West Georgia Street (as of March 17, 2014)
Hours of deposit Monday-Friday	08:00 - 19:30	10:00 - 18:00
Cut-off times	Existing RVU product cut-off times apply (canadapost.ca/cutofftimes)	Open as of Monday, March 17, 2014. Limited deposit for commercial customers for small- and medium-sized mailings at the CDC.
Deposit volume limits	Not applicable	For more details about what can be deposited, read Mail Deposit Practices at canadapost.ca/depositlocations .
Machineable mail	Accepted	Machineable and machineable presort Addressed Admail™ accepted at this location. For more details about where machineable mail can be deposited, visit canadapost.ca/cutofftimes .
Stacking of monotoners and pallets	Double stacked is acceptable	Only single stacked is accepted at this location. Double stacked must be deposited at the RVU, 5940 Ferguson Road, Richmond.
Empty equipment pickup	Commercial customers can pick up empty shipping containers during ALL RVU hours of operation – See above for dates open to customers. Please continue to use the usual request process.	Not available – no empty equipment pickup from this location.

The following is a summary of the letter codes used in the forging material

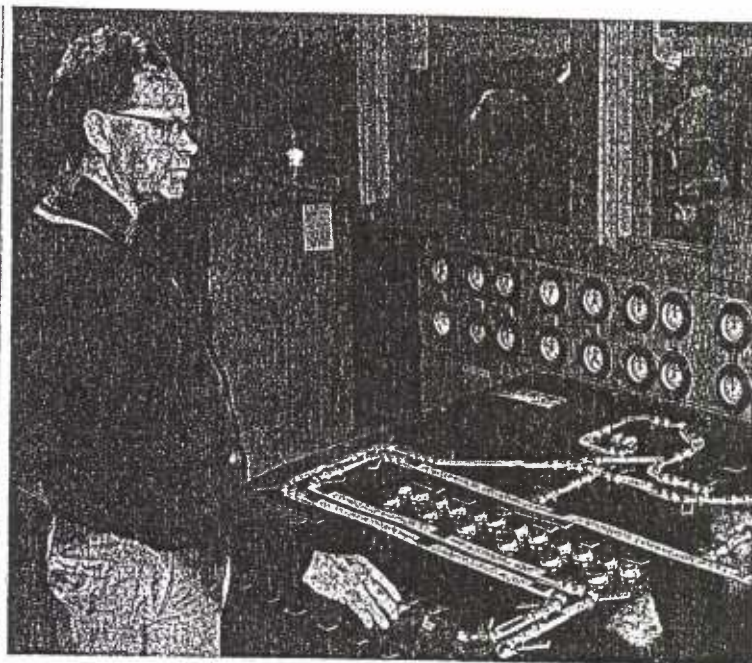
CDC	Commercial Deposit Centre Opened March 17, 2014	349 West Georgia
CDSS	Customer Developed Shipping Centre	
CDSS	Customer Developed Shipping System	
EST	Electronic Shipping Centre	
PPC	Pacific Processing Centre Opened Monday February 24, 2014 Incorporated VPDC and VMPP	5940 Ferguson Rd.
RVU	Receipt Verification Centre Relocated to PPC 5940 Ferguson Rd,	349 Georgia St. & 2551 No. 6 Rd'
VMPP	Vancouver Mail Processing Plant Closed Friday March 14, 2014 Relocated to PPC Monday March 17. 2014	2551 Ferguson Road
VPDC	Vancouver Parcel Distribution Centre Closed February 21, 2014 Moved to PPC Monday February 24 2014	2551 No. 6 Road
3PSS	3 rd Party Shipping System	

Phase	Plant Moves	Last Day of Operations	1st Day of Operations
I	VPDC	Sat Feb 22 '14 Shift 2	Sun. Feb 23 '14 Shift 2
II	LVM / RVU	Fri. Mar 14 '14 Shift 3	Mon. Mar 17 '14 Shift 2
III	Balance of VMPP	Sat. Mar 22 '14 Shift 2	Sun. Mar 23 '14 Shift 3
IV	CBSA & Plant Customs Support	Sat Mar 29 '14 Shift 2	Sun. Mar 30 '14 Shift 2
V	Regional Offices	May 23 '14 - June 6 '14	May 26 '14 - June 9 '14
VI	HUB	TBD	TBD (Sale of Building)

The British Columbia Postal History News Letter is published quarterly on behalf of the British North America Philatelic Society. Dues for the News Letter are \$8.00 for one year or \$15.00 for two years (\$ CAN or \$ US). Checks should be payable to the Editor, Bill Topping, 7430 Angus Drive, Vancouver, BC, V6P 5K2, Canada.

	NEW PLANT 5940 Ferguson Road	CURRENT PLANT 2551 No 6 Road
Receipt verification unit (RVU)	Open to customers Monday, February 24, 2014.	Closed as of end of day Friday, February 21, 2014.
Electronic Shipping Tools (EST)	New RVU site number: 1186.	Site number 1039 no longer valid for RVU as of Friday, February 21, 2014, end of day.
Empty equipment pickup	After following the usual request process, commercial customers can pick up empty shipping containers during ALL hours of RVU operation.	Closed as of end of day Friday, February 21, 2014.
	COMMERCIAL DEPOSIT CENTRE 349 West Georgia Street	
Commercial deposit centre (CDC)	<ul style="list-style-type: none"> • Open to customers Monday, March 17, 2014. • Limited deposit for commercial customers of small- and medium-sized mailings will be accepted at this location. • For more details about what can be deposited, read Mail Deposit Practices at canadapost.ca/depositlocations. 	

VMPP TUNNEL TO BE FILLED IN



The late George Raymond, Supervisor, Forward Division, at the VMPP Belt Control Panel

The tunnel, originally constructed to move mail from the CPR Station on the waterfront to the Vancouver MPP, will be filled in under instructions from the City of Vancouver.

The sale of the VMPP terminated the lease on the tunnel with the City of Vancouver and following an assessment by City Engineers it was decided to decommission the tunnel and fill it in. Work on filling in the area is expected to begin sometime this year.

The tunnel saw limited use following the opening of Vancouver MPP as the movement of mail shifted away from the railways to air in the early 1960s. ("All Up", to all you old time Forward Division members.)

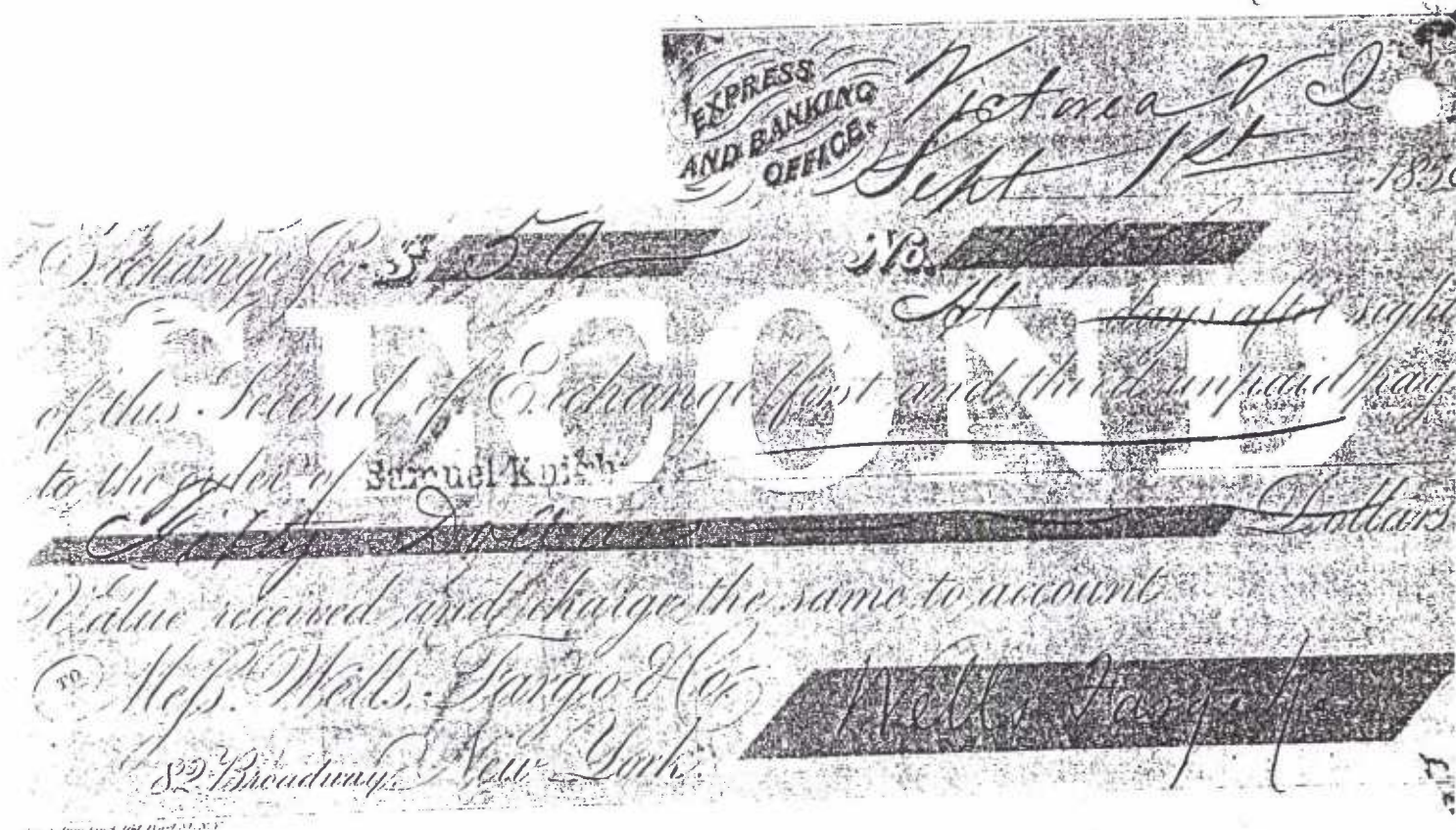
WELLS, FARGO & COMPANY

July 17, 1858

The Victroia office of the Wells Fargo Express and Banking Company opened in Victroia on July 17, 1858 to provide banking and express service. The Company is best known for the transporting of mails and express between Victoria and San Francisco and beyond.

The company was established in New York in 1852 and made it's name transmitting gold-dust from the gold fields of California across the United States to New York. For many years the company enjoyed a virtual monopoly on the movement of mail and express across the United States.

To comply with the United States postal laws the company used U.S. Government 3 cent pre-stamped envelopes to cover the United States postage and charged 25 cents for delivery of mail to California.



The Wells, Fargo Exchange Certificate Number 28,936 for \$50 was issued in the name of Samuel Knight on September 1st, 1858, less than a month and a half after the Victoria office was opened.

WELLS, FARGO. & CO.'S. EXPRESS

In 1884 the Wells, Fargo & Co's Express issued the second in a series of envelopes for use in British Columbia. They had a very short period of use



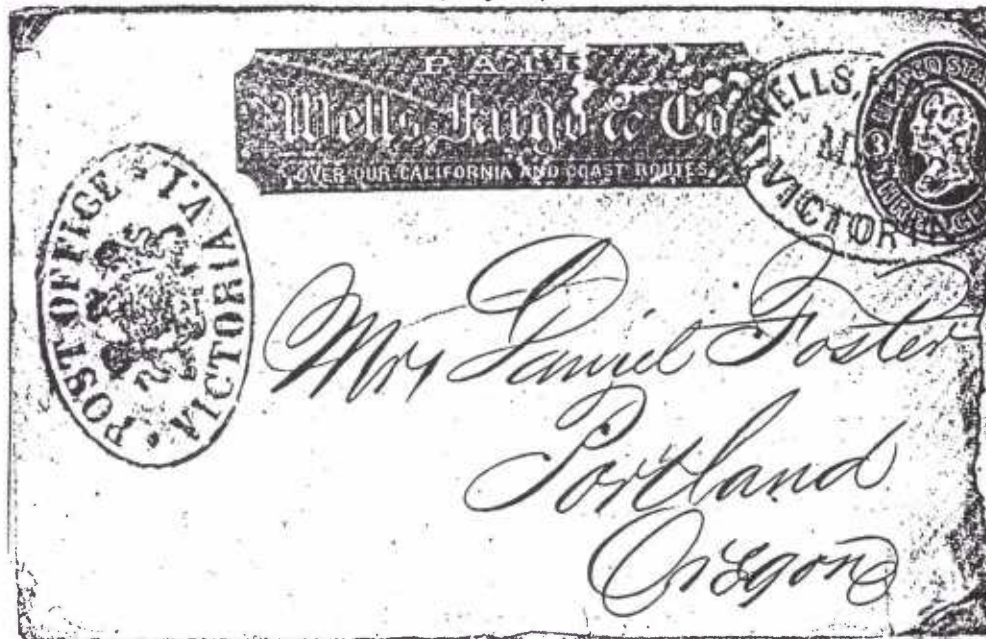
WELLS, FARGO & CO. - VICTORIA, VANCOUVER ISLAND.

Letter mailed at the Wells Fargo office in Victoria for delivery to Portland via the mail ship the "Prince Albert".

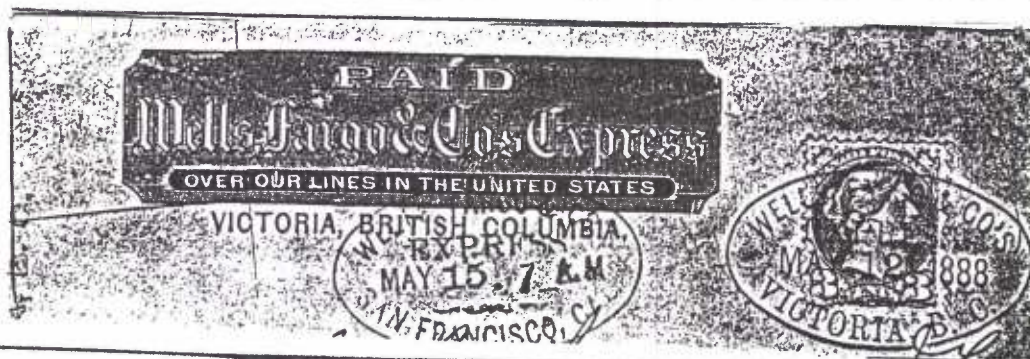


WELLS, FARGO & Co. - POST OFFICE - VICTORIA VI..

Wells, Fargo envelope mailed at Victoria in 3 cent U.S. stamped envelope mailed at the Victoria colonial post office, dated MAR 27 (no year)



Part of Wells, Fargo VICTORIA, BRITISH COLUMBIA envelope canceled
Victoria MAY 12, 1888 and San Francisco May 17 7 AM (no year)



BRITISH COLUMBIA POSTAL HISTORY NEWS LETTER

I have been publishing the British Columbia Postal History News Letter since March of 1992 and have found it great fun but I think 22 years as editor is long enough and as result I am turning the editorial duties over to Andrew Scott and Tracy Cooper. They both have excellent collections of British Columbia material and are extremely well versed in the postal history of the province.

I will continue to produce the occasional item based on information obtained from my friends in the post office, information that is not easily obtained from other sources. For example the opening of the new Main Processing Plant at the Vancouver Airport will bring a number of changes in how letter mail is processed. At the present time plans are to close the main post office on Hamilton Street but there is some confusion as to how the letter box mail will be delivered. Keep tuned for up to date information.